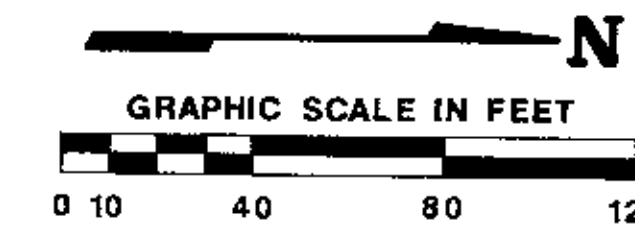


GAMELLIA SUBDIVISION NO. 3

BEING PART OF
ORIGINAL AVON TWP. SECTION 19
 CITY OF AVON LAKE COUNTY OF LORAIN STATE OF OHIO



SCALE: 1" = 40'

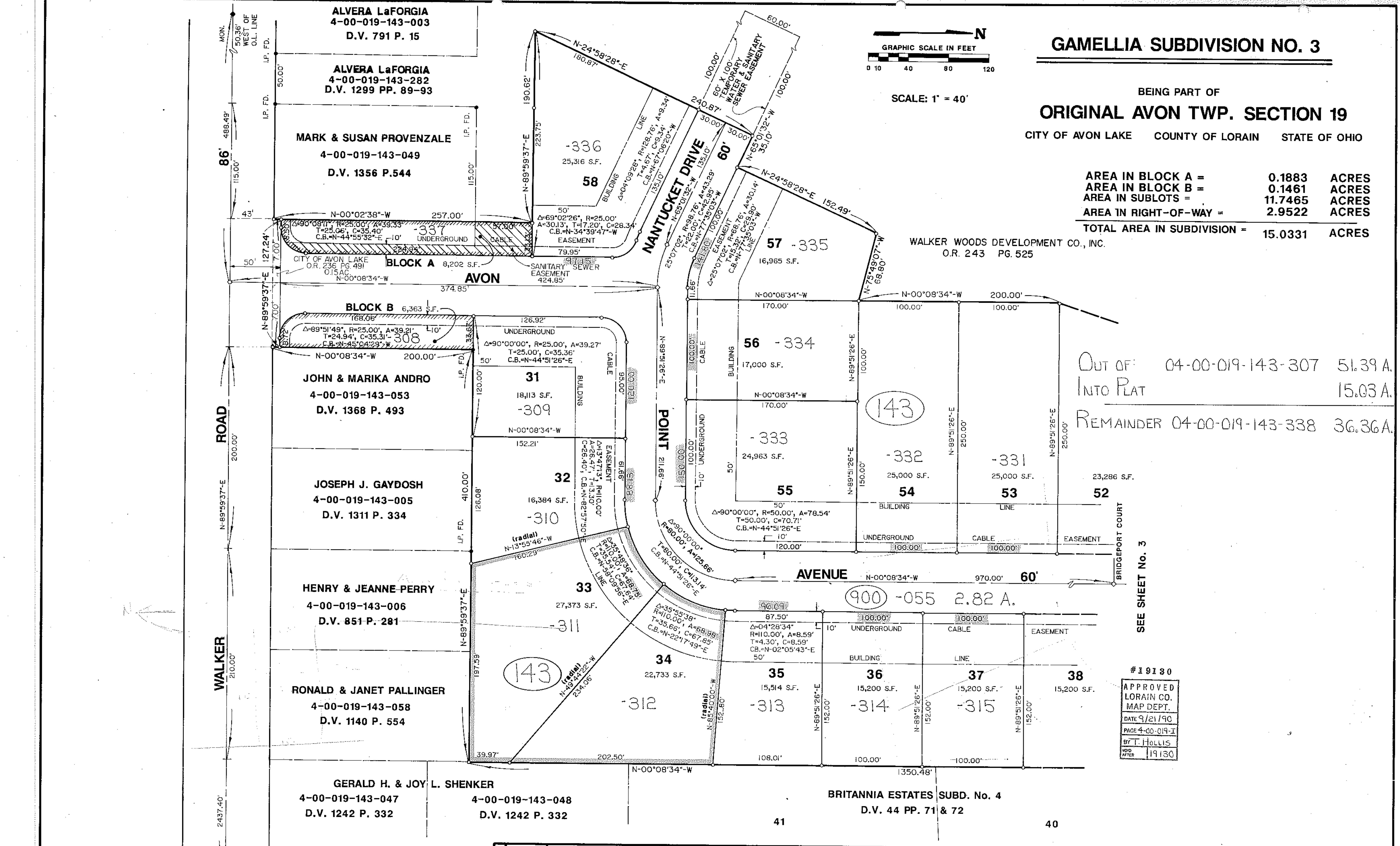
AREA IN BLOCK A =	0.1883	ACRES
AREA IN BLOCK B =	0.1461	ACRES
AREA IN SUBLOTS =	11.7465	ACRES
AREA IN RIGHT-OF-WAY =	2.9522	ACRES
TOTAL AREA IN SUBDIVISION =	15.0331	ACRES

WALKER WOODS DEVELOPMENT CO., INC.
 O.R. 243 PG. 525

OUT OF: 04-00-019-143-307 51.39 A.
 INTO PLAT 15.03 A.
 REMAINDER 04-00-019-143-338 36.36 A.

SEE SHEET No. 3

#19130
 APPROVED
 LORAIN CO.
 MAP DEPT.
 DATE 9/21/90
 PAGE 4-00-019-1
 BY T. HOLLIS
 VOID AFTER 11/13/0



REVISIONS	DATE	DESCRIPTION
	08-28-90	UPDATED OWNERSHIPS & SANITARY EASEMENTS
	08-30-90	MISCELLANEOUS REVISIONS
	09-19-90	MISCELLANEOUS REVISIONS

GAMELLIA SUBDIVISION NO. 3

KS ASSOCIATES, INC.
 ENGINEERS/SURVEYORS
 424 Middle Avenue
 P.O. Box 89
 Elyria, Ohio 44036
 Elyria (216) 322-6317 • Lorain (216) 244-5757



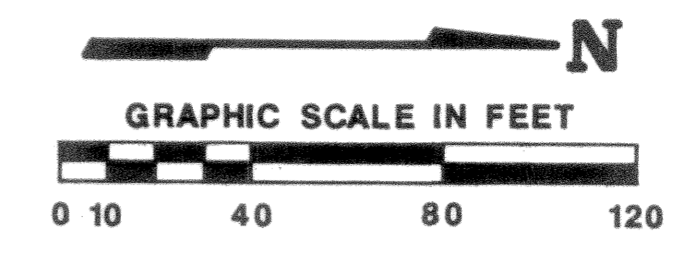
SHEET 2 OF 3
 JOB NO. 88-478

110979

46/18
110979

GAMELLIA SUBDIVISION NO. 3

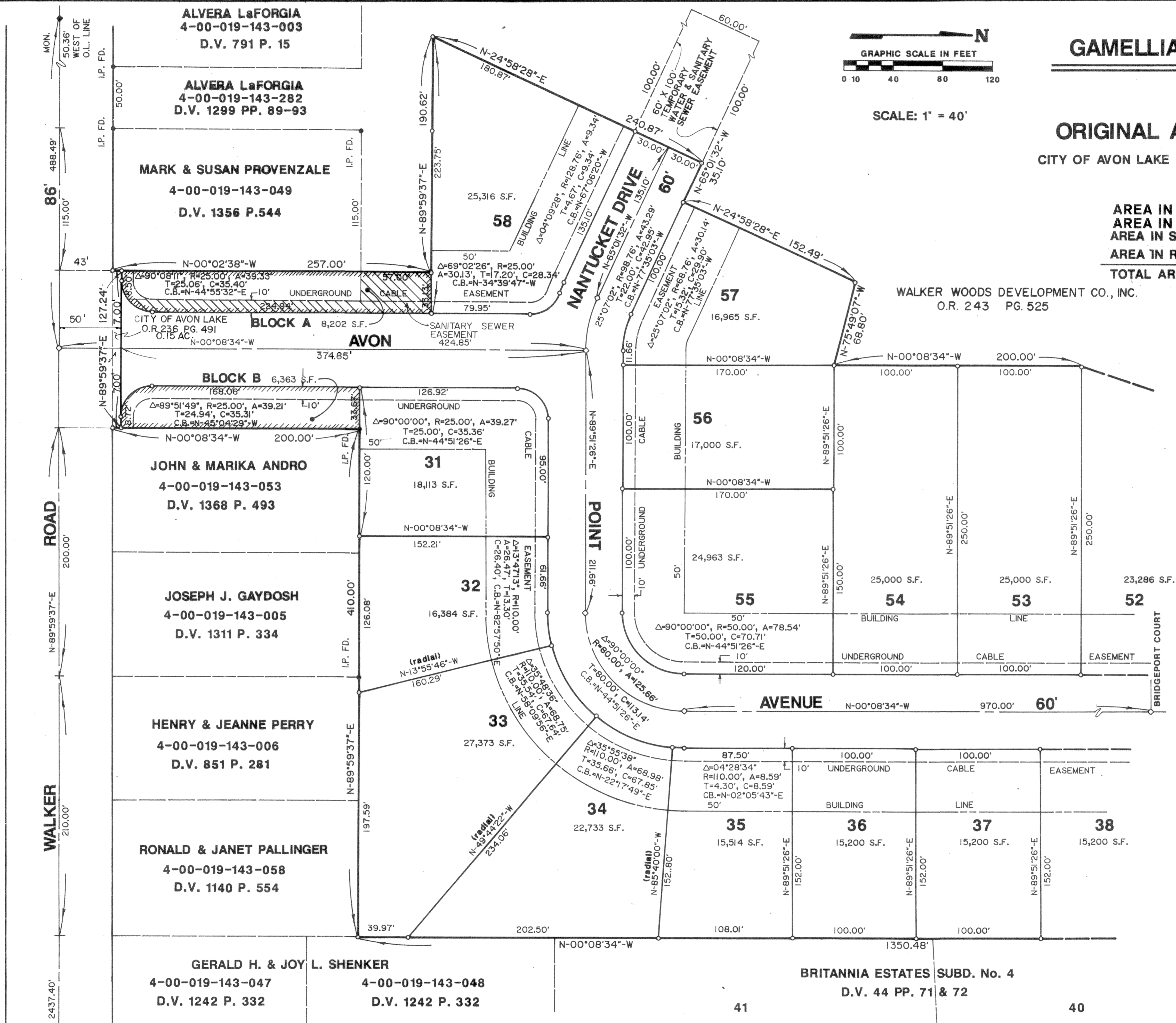
BEING PART OF
ORIGINAL AVON TWP. SECTION 19
CITY OF AVON LAKE COUNTY OF LORAIN STATE OF OHIO



SCALE: 1" = 40'

AREA IN BLOCK A =	0.1883	ACRES
AREA IN BLOCK B =	0.1461	ACRES
AREA IN SUBLOTS =	11.7465	ACRES
AREA IN RIGHT-OF-WAY =	2.9522	ACRES
TOTAL AREA IN SUBDIVISION =	15.0331	ACRES

WALKER WOODS DEVELOPMENT CO., INC.
O.R. 243 PG. 525



SEE SHEET No. 3

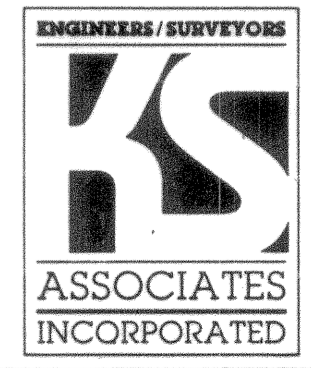
08-28-90	UPDATED OWNERSHIPS & SANITARY EASEMENTS
08-30-90	MISCELLANEOUS REVISIONS
09-19-90	MISCELLANEOUS REVISIONS

GAMELLIA SUBDIVISION NO. 3

LORAIN COUNTY TAX
MAP DEPARTMENT COPY

KS ASSOCIATES, INC.

ENGINEERS/SURVEYORS
424 Middle Avenue
P.O. Box 89
Elyria, Ohio 44036
Elyria (216) 322-6317 • Lorain (216) 244-5757



SHEET	2	OF	3
JOB NO.	88-478		

46/18

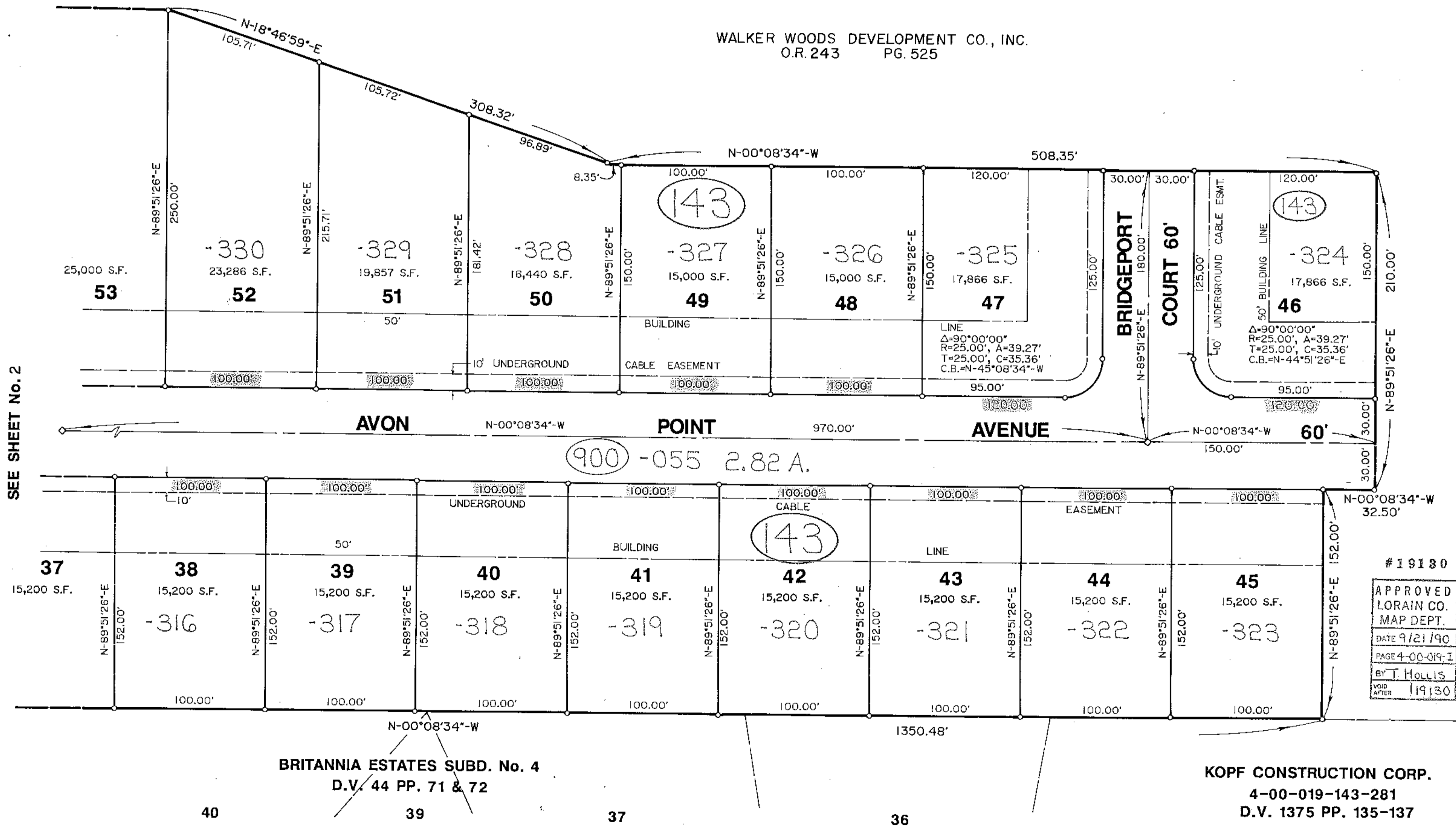


SCALE: 1" = 40'

GAMELLIA SUBDIVISION NO. 3

BEING PART OF
ORIGINAL AVON TWP. SECTION 19
 CITY OF AVON LAKE COUNTY OF LORAIN STATE OF OHIO

AREA IN BLOCK A = 0.1883 ACRES
 AREA IN BLOCK B = 0.1461 ACRES
 AREA IN SUBLOTS = 11.7465 ACRES
 AREA IN RIGHT-OF-WAY = 2.9522 ACRES
TOTAL AREA IN SUBDIVISION = 15.0331 ACRES



OUT OF: 04-00-019-143-307 51.39 A.
 INTO PLAT 15.03 A.
 REMAINDER 04-00-019-143-338 36.36 A.

REVISIONS	DATE	DESCRIPTION
08-28-90	08-30-90	UPDATED OWNERSHIPS
08-30-90		MISCELLANEOUS REVISIONS
09-19-90		MISCELLANEOUS REVISIONS

GAMELLIA SUBDIVISION NO. 3

KS ASSOCIATES, INC.

ENGINEERS/SURVEYORS
 424 Middle Avenue
 P.O. Box 89
 Elyria, Ohio 44036



Elyria (216) 322-6317 • Lorain (216) 244-5757

SHEET 3 OF 3
 JOB NO. 88-478

46/19