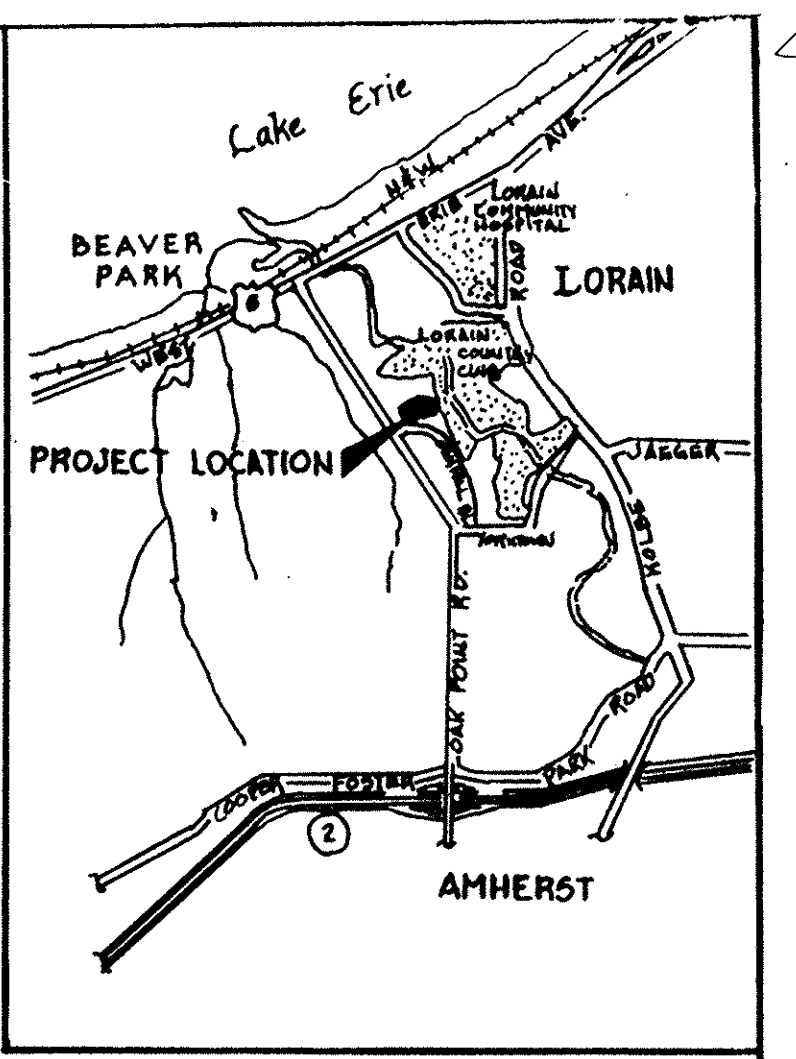


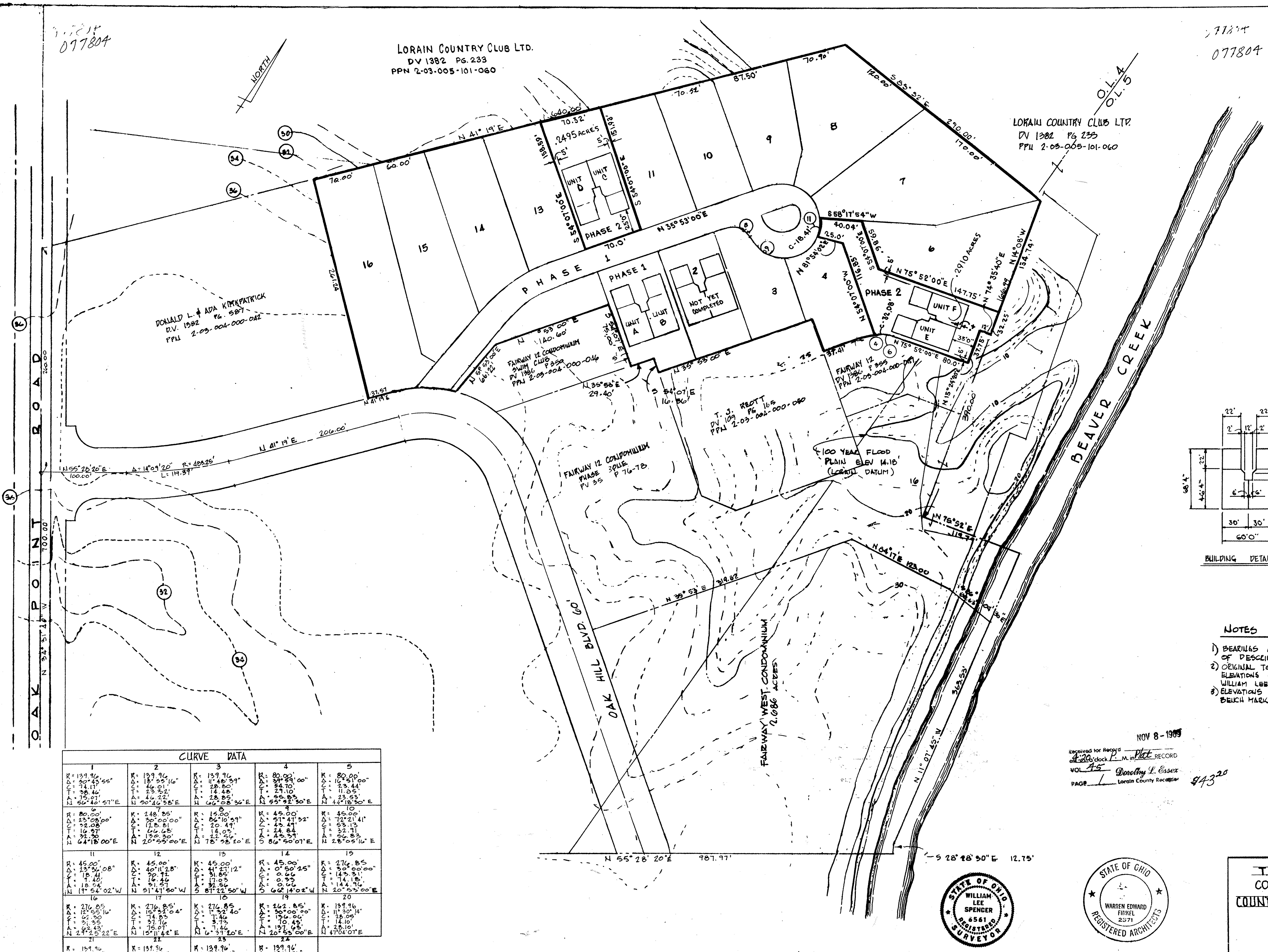
077804

LORAIN COUNTRY CLUB LTD.
DV 1382 Pg. 233
PPN 2-03-005-101-060

077804



LOCATION MAP

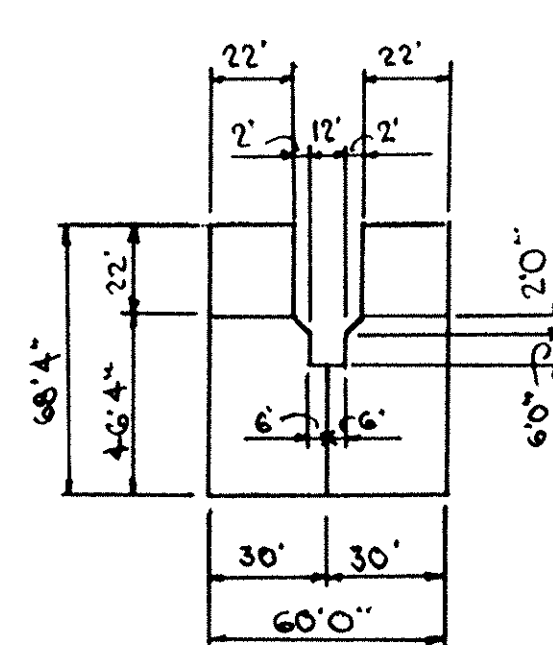


DONALD L. & ADA KIMPATRICK
D.V. 1382 Pg. 587
PPL 2-03-004-000-042

FAIRWAY 12 CONDOMINIUM
SWIM CLUB
DV 1386 Pg. 350
PPL 2-03-004-000-046

T. J. REOTT
DV 109 Pg. 165
PPL 2-03-002-000-080

100 YEAR FLOOD
PLAIN ELEV 14.18'
(LORAIN DATUM)



BUILDING DETAIL

NOTES

- 1) BEARINGS ARE ASSUMED FOR THE PURPOSE OF DESCRIBING ANGLES ONLY.
- 2) ORIGINAL TOPOGRAPHY BY U.R. HORA. ELEVATIONS CHECKED & VERIFIED BY WILLIAM LEE SPENCER ON MAY 14, 1988.
- 3) ELEVATIONS BASED ON CITY OF LORAIN BENCH MARK SYSTEM.

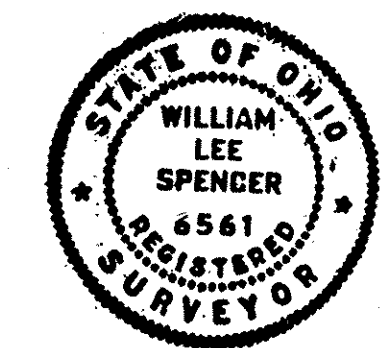
NOV 8 - 1988
Received for Record
at 2:26 clock P.M. in Plot RECORD
VOL. 45
PAGE 1
Dorothy L. Caser
Lorain County Recorder

TRANSFERRED
IN COMPLIANCE WITH SEC. 240-002
CHS REV. CODE
NOV 8 1988
JULIAN A. POOR
LORAIN COUNTY AUDITOR

CURVE DATA				
1 R: 139.96' C: 207.43' T: 74.11' A: 30.46' N 50°40'57"E	2 R: 139.96' C: 207.43' T: 74.11' A: 30.46' N 50°40'57"E	3 R: 139.96' C: 207.43' T: 74.11' A: 30.46' N 50°40'57"E	4 R: 80.00' C: 34.70' T: 27.10' A: 39.81' N 55°22'30"E	5 R: 80.00' C: 34.70' T: 27.10' A: 39.81' N 55°22'30"E
6 R: 23.00' C: 22.08' T: 16.97' A: 42.18' N 64°18'00"E	7 R: 248.85' C: 178.81' T: 66.68' A: 20°55'00"E	8 R: 15.00' C: 20.49' T: 14.05' A: 78°08'10"E	9 R: 45.00' C: 43.41' T: 24.84' A: 45.54' S 86°00'07"E	10 R: 45.00' C: 43.41' T: 24.84' A: 45.54' S 86°00'07"E
11 R: 45.00' C: 43.41' T: 24.84' A: 45.54' S 86°00'07"E	12 R: 45.00' C: 43.41' T: 24.84' A: 45.54' S 86°00'07"E	13 R: 45.00' C: 43.41' T: 24.84' A: 45.54' S 86°00'07"E	14 R: 45.00' C: 43.41' T: 24.84' A: 45.54' S 86°00'07"E	15 R: 276.85' C: 143.31' T: 74.18' A: 14.18' N 20°53'10"E
16 R: 276.85' C: 143.31' T: 74.18' A: 14.18' N 20°53'10"E	17 R: 276.85' C: 143.31' T: 74.18' A: 14.18' N 20°53'10"E	18 R: 276.85' C: 143.31' T: 74.18' A: 14.18' N 20°53'10"E	19 R: 262.85' C: 130.00' T: 70.43' A: 13.65' N 20°53'10"E	20 R: 139.96' C: 207.43' T: 74.11' A: 30.46' N 50°40'57"E
21 R: 139.96' C: 207.43' T: 74.11' A: 30.46' N 50°40'57"E	22 R: 139.96' C: 207.43' T: 74.11' A: 30.46' N 50°40'57"E	23 R: 139.96' C: 207.43' T: 74.11' A: 30.46' N 50°40'57"E	24 R: 139.96' C: 207.43' T: 74.11' A: 30.46' N 50°40'57"E	25 R: 139.96' C: 207.43' T: 74.11' A: 30.46' N 50°40'57"E

LORAIN COUNTY
TAX MAP DEPARTMENT

Bob: Lorain County Title
(Mr. Reott)



William Lee Spencer
WILLIAM LEE SPENCER
REG. SURVEYOR NO. 6561

2	ADDED CURVE DATA, BLDG. DETAIL	2/25/87
1	CHANGED FLR. ELEV.-ADDED PVMT. ELEV.	5-27-86
112	REVISION	DATE 10-10-89

T.J. REOTT BUILDERS INC.
CONDOMINIUM PROJECT
COUNTRY CLUB OVERLOOK CONDOMINIUM

LORAIN, OHIO
PHASE TWO-UNITS C-D-E-F
.05405 TOTAL ACRES

SCALE: 1"=50'-0"

45/1

45/1