

CURVE DATA							
CENTERLINE CURVE	RADIUS	DELTA	ARC	TANGENT	CHORD	BEARING	
(A)	200.00'	28°01'48"	97.84'	49.92'	96.87'	S-14°01'46"-E	
(B)	200.00'	43°48'38"	152.93'	80.42'	149.23'	S-21°53'27"-W	
SUBLOT	CURVE	RADIUS	DELTA	ARC	TANGENT	CHORD	BEARING
217		170.00'	28°01'48"	83.37'	42.43'	82.34'	S-14°01'46"-E
219		170.00'	38°27'37"	114.11'	59.30'	111.98'	S-19°12'56"-W
220	(1)	170.00'	5°21'02"	15.88'	7.94'	15.87'	S-4°07'16"-W
220	(2)	25.00'	90°00'00"	39.27'	25.00'	35.36'	S-88°47'48"-W
221		25.00'	90°00'00"	39.27'	25.00'	35.36'	S-1°12'14"-E
224		230.00'	13°02'05"	52.32'	26.28'	52.21'	N-37°16'44"-E
225		230.00'	22°05'59"	88.71'	44.92'	88.16'	N-19°42'41"-E
226		230.00'	8°40'34"	34.83'	17.45'	34.80'	N-4°19'25"-E
227		230.00'	6°57'26"	27.33'	13.98'	27.91'	N-3°29'35"-W
228		230.00'	21°04'21"	64.59'	42.78'	84.12'	N-17°30'29"-E

NOTE: IRON PINS SHOWN WITHIN THE RIGHT-OF-WAY ARE OFFSET 16.00' FROM THE RIGHT-OF-WAY AND ARE SET ON THE PROPERTY LINE BEARING PRODUCED TOWARDS THE CENTERLINE.

OUT OF 04-00-030-141-140 71.78 A.
 INTO PLAT - 8.0111 A.
 REMAINDER 04-00-030-141-144 63.7689 A.

AREA IN SUBLOTS 6.5434 AC.
 AREA IN STREET R/W 1.4677 AC.
 TOTAL AREA 8.0111 AC.

KS ASSOCIATES INCORPORATED
 ENGINEERS/SURVEYORS
 424 MIDDLE AVENUE
 ELYRIA, OHIO

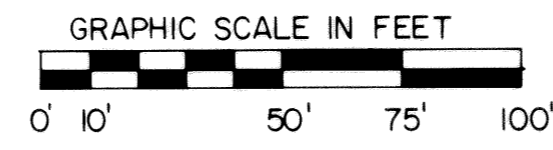
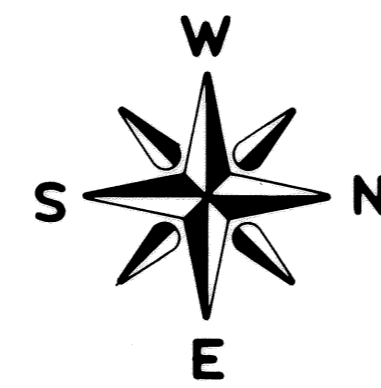
WESTWINDS SUBDIVISION NUMBER 12
 PART OF AVON TOWNSHIP SECTION 30
 CITY OF AVON LAKE, COUNTY OF LORAIN, STATE OF OHIO

#18201
 APPROVED
 LORAIN CO.
 MAP DEPT.
 DATE 11/15/88
 PAGE 4-00-030-F
 BY T. HOLLIS
 VOID AFTER 1/8/90

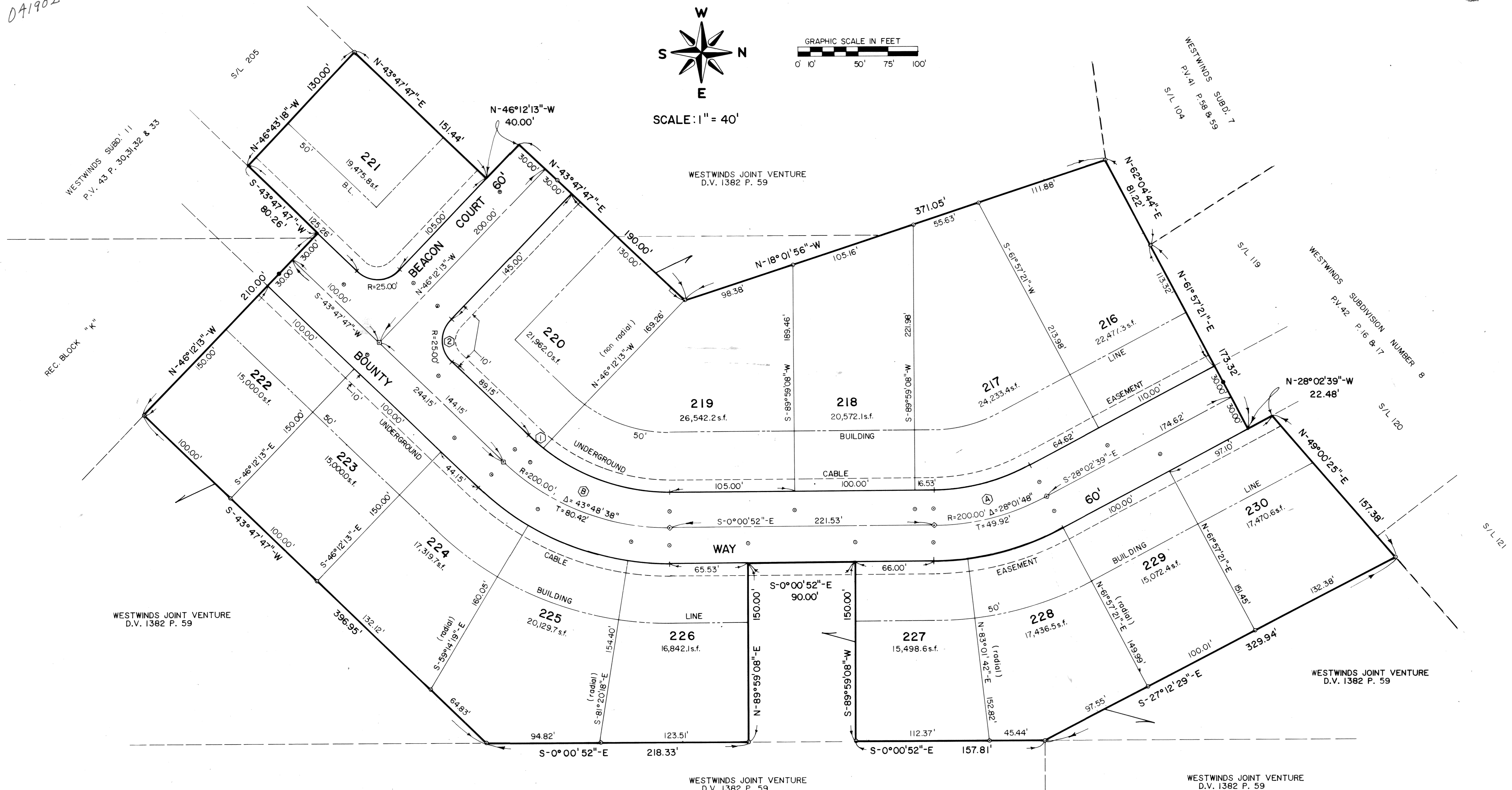
43/77&78 (2)

041902

041902
43/78



SCALE: 1" = 40'



WESTWINDS JOINT VENTURE
D.V. 1382 P. 59

WESTWINDS JOINT VENTURE
D.V. 1382 P. 59

WESTWINDS JOINT VENTURE
D.V. 1382 P. 59

WESTWINDS JOINT VENTURE
D.V. 1382 P. 59

WESTWINDS JOINT VENTURE
D.V. 1382 P. 59

CURVE DATA							
CENTERLINE CURVE	RADIUS	DELTA	ARC	TANGENT	CHORD	BEARING	
(A)	200.00'	28°01'48"	97.84'	49.92'	96.87'	S-14°01'46"-E	
(B)	200.00'	43°48'38"	152.93'	80.42'	149.23'	S-21°53'27"-W	
SUBLOT	CURVE						
217		170.00'	28°01'48"	83.17'	42.43'	82.34'	S-14°01'46"-E
219		170.00'	38°27'37"	114.11'	59.30'	111.98'	S-19°12'56"-W
220	(1)	170.00'	5°21'02"	15.88'	7.94'	15.87'	S-41°07'16"-W
220	(2)	25.00'	90°00'00"	39.27'	25.00'	35.36'	S-88°47'48"-W
221		25.00'	90°00'00"	39.27'	25.00'	35.36'	S-1°12'14"-E
224		230.00'	13°02'05"	52.32'	26.28'	52.21'	N-37°16'44"-E
225		230.00'	22°05'59"	88.71'	44.92'	88.16'	N-19°42'41"-E
226		230.00'	8°40'34"	34.83'	17.45'	34.80'	N-4°19'25"-E
227		230.00'	6°57'26"	27.93'	13.98'	27.91'	N-3°29'35"-W
228		230.00'	21°04'21"	84.59'	42.78'	84.12'	N-17°30'29"-W

NOTE: IRON PINS SHOWN WITHIN THE RIGHT-OF-WAY ARE OFFSET 16.00' FROM THE RIGHT-OF-WAY AND ARE SET ON THE PROPERTY LINE BEARING PRODUCED TOWARDS THE CENTERLINE.

AREA IN SUBLOTS 6.5434 AC.
AREA IN STREET R/W 1.4677 AC.
TOTAL AREA 8.0111 AC.

KS ASSOCIATES INCORPORATED
ENGINEERS/SURVEYORS
424 MIDDLE AVENUE
ELYRIA, OHIO

WESTWINDS SUBDIVISION NUMBER 12
PART OF AVON TOWNSHIP SECTION 30
CITY OF AVON LAKE, COUNTY OF LORAIN, STATE OF OHIO

LORAIN COUNTY
TAX MAP DEPARTMENT

43/78