

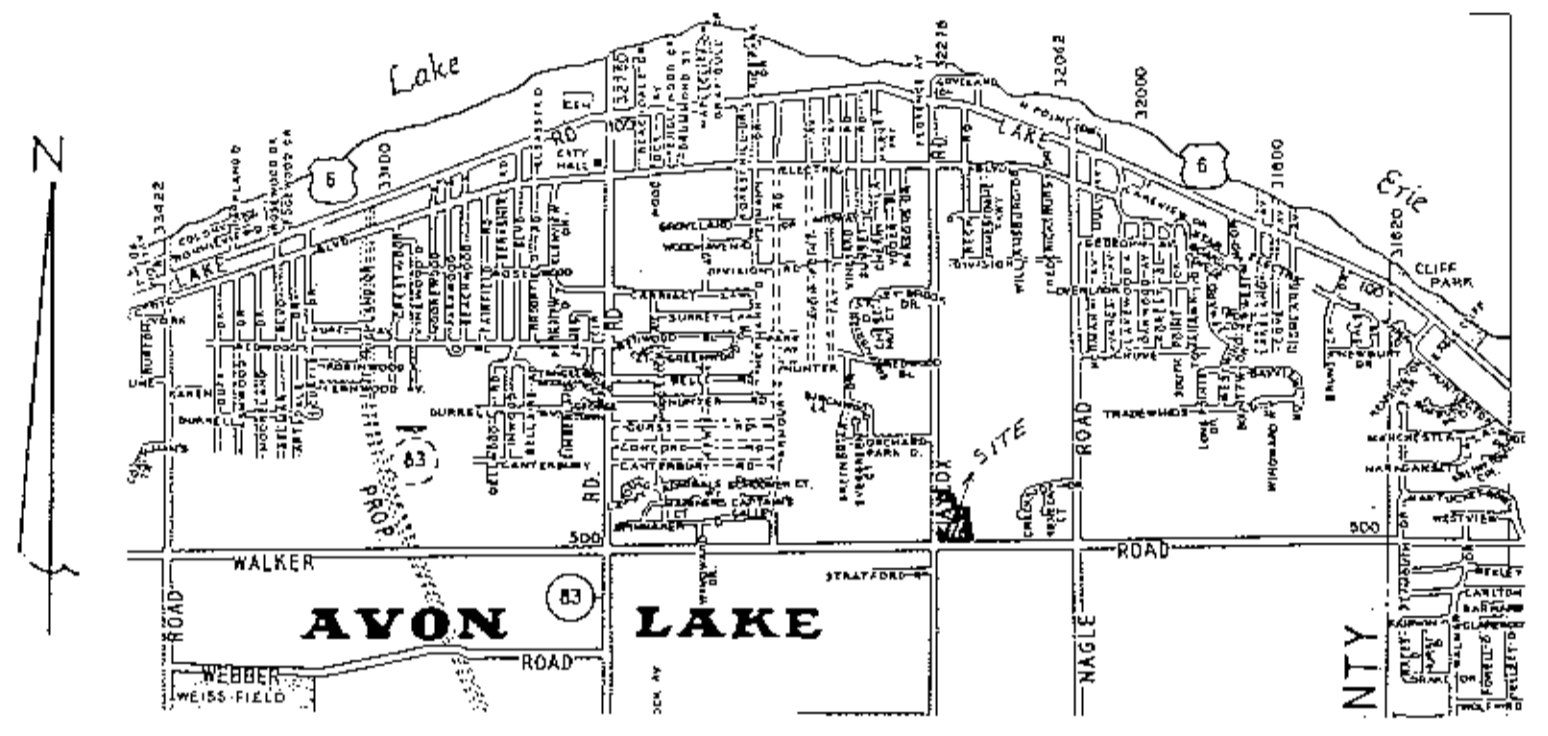
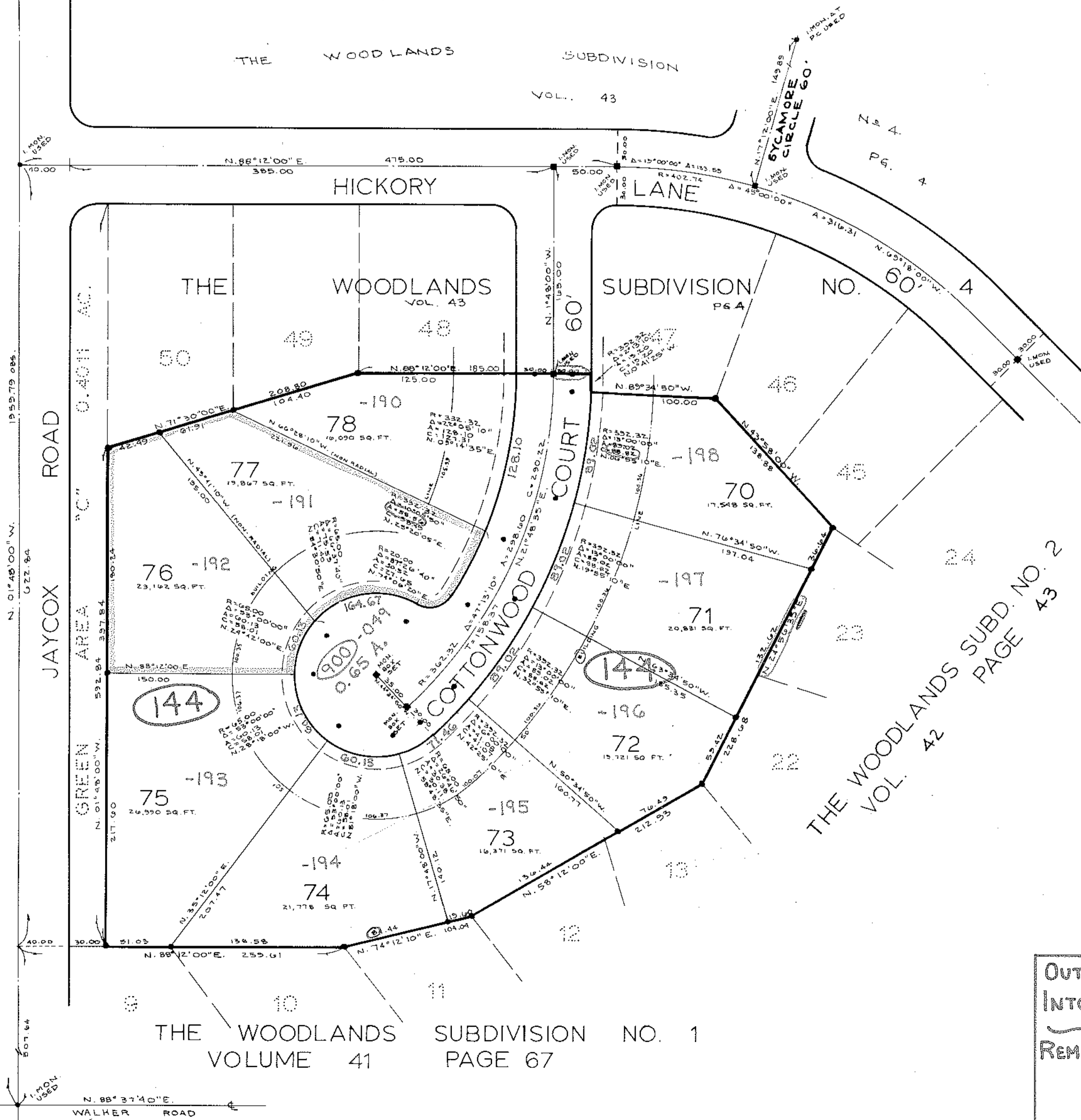
THE WOODLANDS SUBDIVISION NO. 6

OF PART OF ORIGINAL AVON TOWNSHIP SECTION NO. 19, NOW IN THE CITY OF AVON LAKE, COUNTY OF LORAIN AND STATE OF OHIO. MONUMENTS WERE FOUND OR SET AT ALL POINTS INDICATED HEREON. DISTANCES ARE GIVEN IN FEET AND DECIMAL PARTS THEREOF. ALL OF WHICH WE CERTIFY TO BE CORRECT.

SCALE 1"=50'
AUGUST 1988

THE HENRY G REITZ ENGINEERING COMPANY

NOTE:
• DENOTES IRON PIN SET 15.00 FEET OFF RIGHT-OF-WAY LINE. (TYPICAL THROUGHOUT)



OUT OF	04-00-019-144-189	10.865 A.
INTO PLAT		4.8325 A.
REMAINDER	04-00-019-144-199	6.0325 A.

#18183

APPROVED
LORAIN CO.
MAP DEPT.
DATE 10/25/88
PAGE 4-00-019-K
BY T. HOLLIS
VOID AFTER 18183

43/62963

040074
43/63

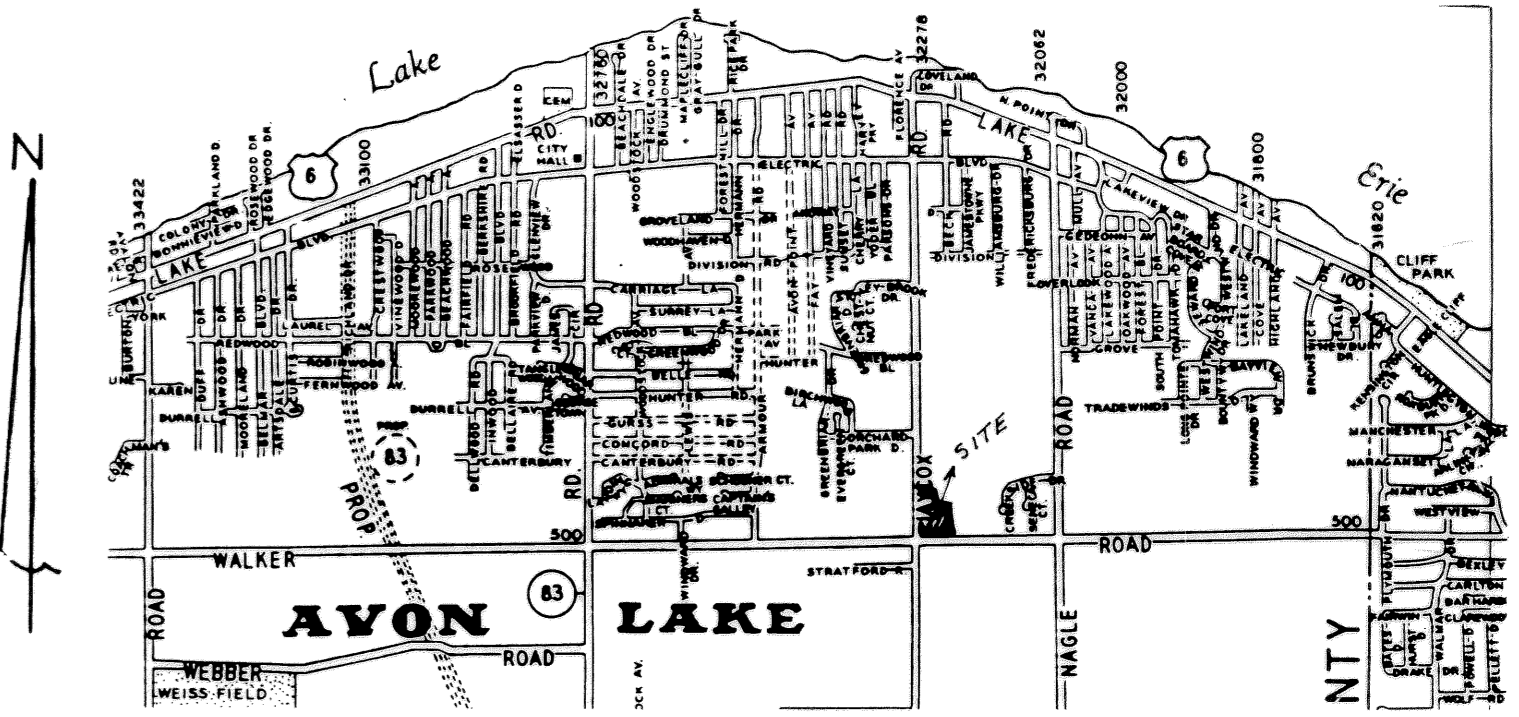
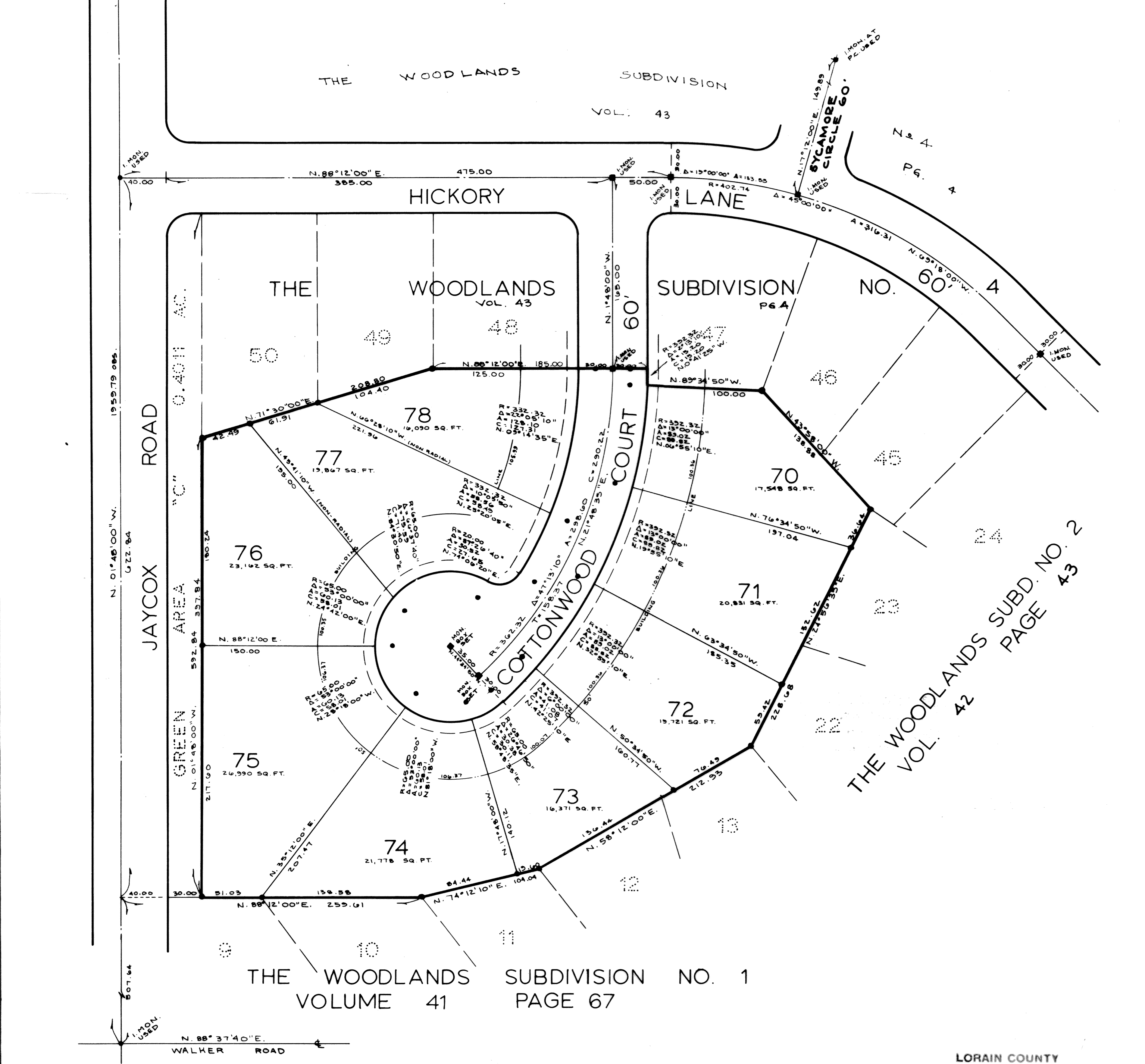
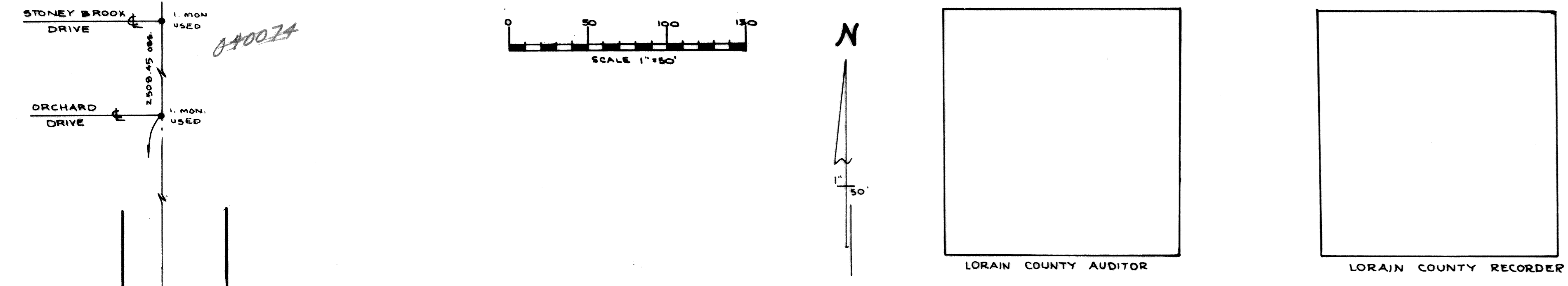
THE WOODLANDS SUBDIVISION NO. 6

OF PART OF ORIGINAL AVON TOWNSHIP SECTION NO. 19, NOW IN THE CITY OF AVON LAKE, COUNTY OF LORAIN AND STATE OF OHIO. MONUMENTS WERE FOUND OR SET AT ALL POINTS INDICATED HEREON. DISTANCES ARE GIVEN IN FEET AND DECIMAL PARTS THEREOF. ALL OF WHICH WE CERTIFY TO BE CORRECT.

SCALE 1"=50'
AUGUST 1988

THE HENRY G REITZ ENGINEERING COMPANY

NOTE:
• DENOTES IRON PIN SET 15.00 FEET OFF RIGHT-OF-WAY LINE. (TYPICAL THROUGHOUT)



THE WOODLANDS SUBDIVISION NO. 1
VOLUME 41 PAGE 67

THE WOODLANDS SUBD. NO. 2
VOL. 42 PAGE 43

LORAIN COUNTY
TAX MAP DEPARTMENT

THE WOODLANDS SUBD. NO. 6
SHEET 2 OF 2

43/63