

CENTERLINE SURVEY PLAT

LOR-INDUSTRIAL PARKWAY SECTION II
 LORAIN COUNTY, CITY OF ELYRIA, ELYRIA TWP, R-17-W, T-6-N
 WEST OF THE RIVER

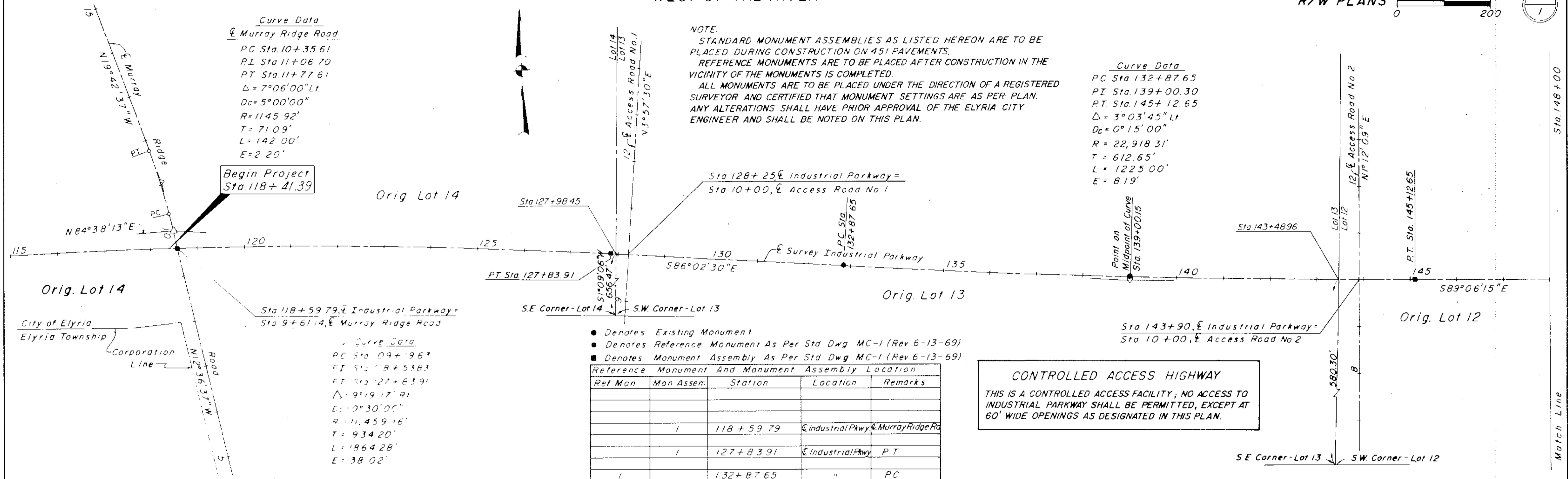
STATE JOB NUMBER	FED. RD. DIVISION	STATE	PROJECT	67
03341(0)	5	OHIO	M-9C16 (1)	75

LORAIN COUNTY
 CITY OF ELYRIA
 LOR-INDUSTRIAL PARKWAY SEC. II
 R/W PLANS

Curve Data
 Murray Ridge Road
 PC Sta. 10+35.61
 PI Sta. 11+06.70
 PT Sta. 11+77.61
 $\Delta = 7^{\circ}06'00''$ Lt.
 $D_c = 5^{\circ}00'00''$
 $R = 1145.92'$
 $T = 71.09'$
 $L = 142.00'$
 $E = 2.20'$

NOTE
 STANDARD MONUMENT ASSEMBLIES AS LISTED HEREON ARE TO BE PLACED DURING CONSTRUCTION ON 451 PAVEMENTS.
 REFERENCE MONUMENTS ARE TO BE PLACED AFTER CONSTRUCTION IN THE VICINITY OF THE MONUMENTS IS COMPLETED.
 ALL MONUMENTS ARE TO BE PLACED UNDER THE DIRECTION OF A REGISTERED SURVEYOR AND CERTIFIED THAT MONUMENT SETTINGS ARE AS PER PLAN.
 ANY ALTERATIONS SHALL HAVE PRIOR APPROVAL OF THE ELYRIA CITY ENGINEER AND SHALL BE NOTED ON THIS PLAN.

Curve Data
 PC Sta. 132+87.65
 PI Sta. 139+00.30
 PT Sta. 145+12.65
 $\Delta = 3^{\circ}03'45''$ Lt.
 $D_c = 0^{\circ}15'00''$
 $R = 22,918.31'$
 $T = 612.65'$
 $L = 1225.00'$
 $E = 8.19'$

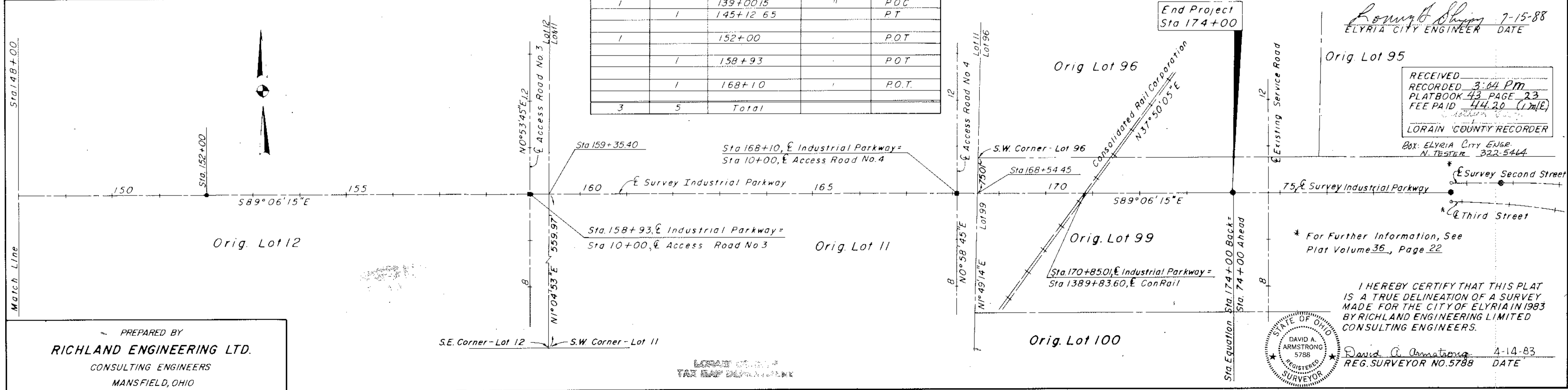


● Denotes Existing Monument
 ● Denotes Reference Monument As Per Std. Dwg. MC-1 (Rev. 6-13-69)
 ■ Denotes Monument Assembly As Per Std. Dwg. MC-1 (Rev. 6-13-69)

Reference Monument And Monument Assembly Location

Ref. Mon.	Mon. Assen.	Station	Location	Remarks
	1	118+59.79	Industrial Pkwy. & Murray Ridge Rd.	
	1	127+83.91	Industrial Pkwy. PT	
	1	132+87.65	"	PC
	1	139+00.15	"	POC
	1	145+12.65	"	PT
	1	152+00	"	P.O.T.
	1	158+93	"	P.O.T.
	1	168+10	"	P.O.T.
3	5	Total		

CONTROLLED ACCESS HIGHWAY
 THIS IS A CONTROLLED ACCESS FACILITY; NO ACCESS TO INDUSTRIAL PARKWAY SHALL BE PERMITTED, EXCEPT AT 60' WIDE OPENINGS AS DESIGNATED IN THIS PLAN.



PREPARED BY
RICHLAND ENGINEERING LTD.
 CONSULTING ENGINEERS
 MANSFIELD, OHIO

End Project Sta. 174+00

Lowell Shy 7-15-88
 ELYRIA CITY ENGINEER DATE

RECEIVED
 RECORDED 3:04 PM
 PLATBOOK 43 PAGE 23
 FEE PAID 44.20 (L.M.E.)
 LORAIN COUNTY RECORDER
 Box: ELYRIA City Engr.
 N. TESTER 322-5464

* For Further Information, See Plat Volume 36, Page 22

I HEREBY CERTIFY THAT THIS PLAT IS A TRUE DELINEATION OF A SURVEY MADE FOR THE CITY OF ELYRIA IN 1983 BY RICHLAND ENGINEERING LIMITED CONSULTING ENGINEERS.

David A. Armstrong 4-14-83
 REG. SURVEYOR NO. 5788 DATE