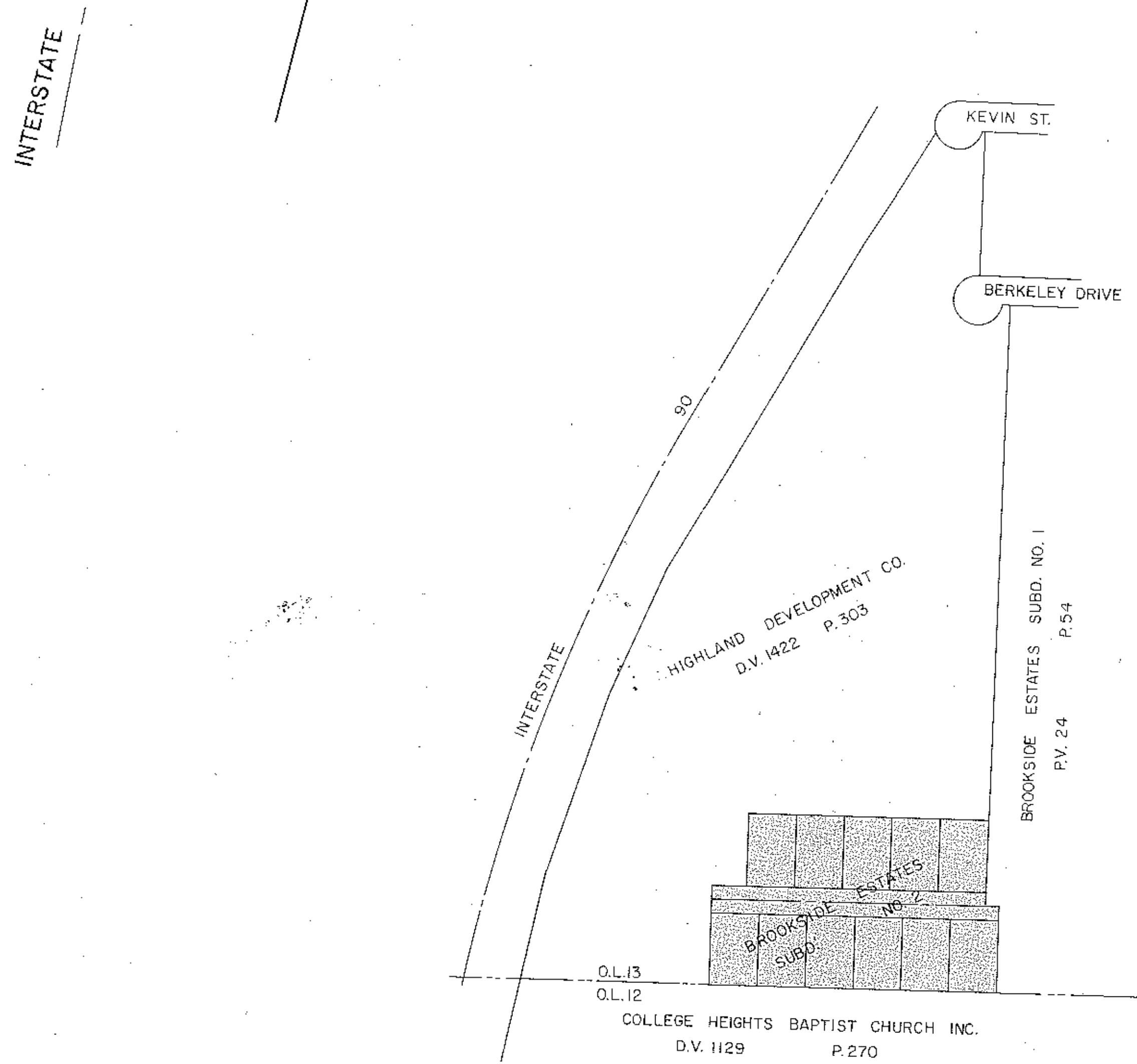
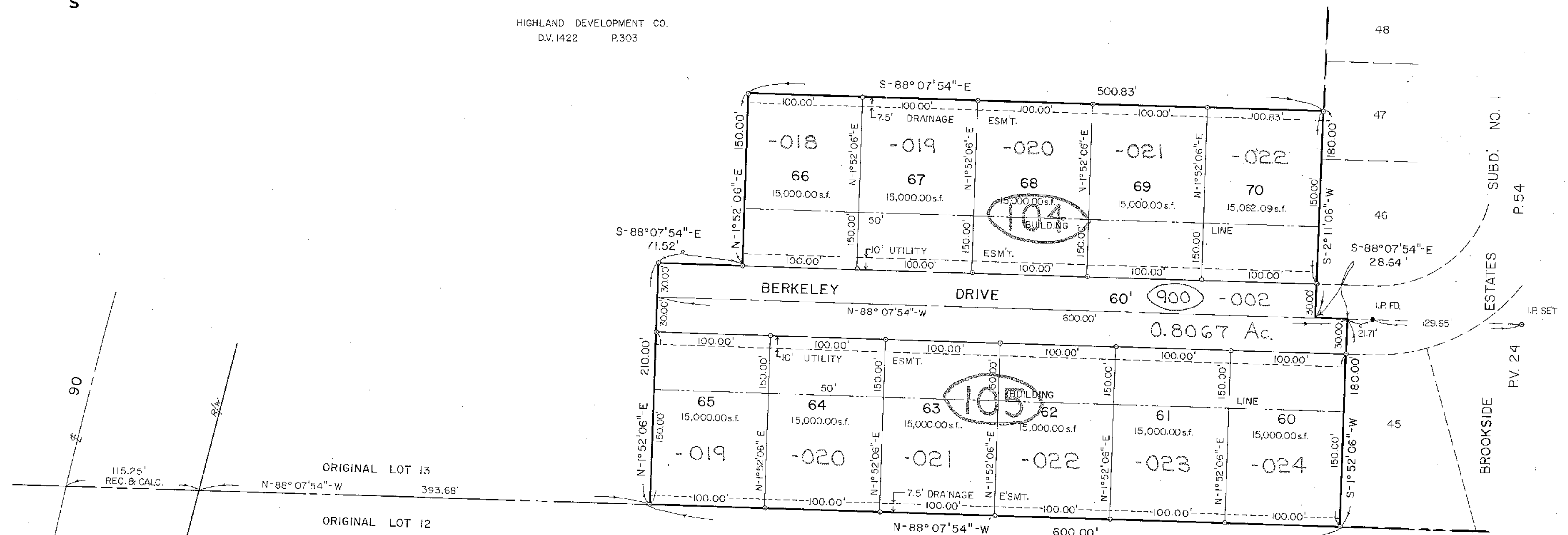


SCALE: 1" = 50'

HIGHLAND DEVELOPMENT CO.
D.V. 1422 P.303

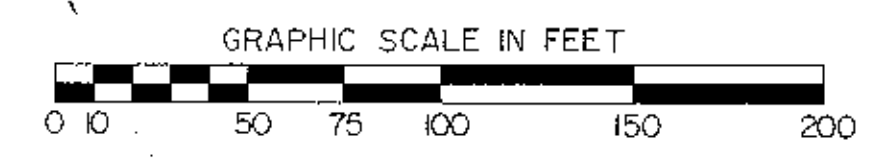


COLLEGE HEIGHTS BAPTIST CHURCH, INC.
D.V. 1129 P. 270

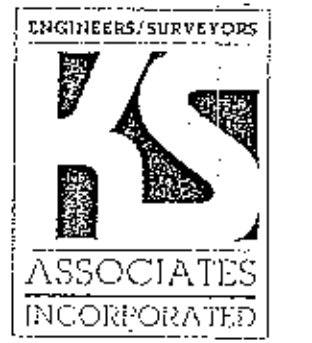
OUT OF 03-00-013-104-017	29.30 Ac.
NO NUMBER ASSIGNED	0.1730 Ac.
INTO PLAT	29.4730 Ac.
REMAINDER 03-00-013-104-023	24.877 Ac.

AREA IN SUBLOTS	3.7893 AC.
AREA IN STREET R/W	0.8067 AC.
TOTAL SUBDIVISION AREA	4.5960 AC.

OUT OF 03-00-013-104-017	29.30 Ac.
INTO PLAT	4.5960 Ac.
REMAINDER 03-00-013-104-023	24.704 Ac.
VACATION	0.1730 Ac.
	24.877 Ac.



#17906
 APPROVED
 LORAIN CO.
 MAP DEPT.
 DATE 5/18/88
 PAGE 3-00-013-B
 BY T. HOLMS
 VOID AFTER 17906



BROOKSIDE ESTATES SUBDIVISION NUMBER 2
 PART OF ORIGINAL SHEFFIELD TOWNSHIP LOT NO. 13
 VILLAGE OF SHEFFIELD, COUNTY OF LORAIN, STATE OF OHIO

424 Middle Avenue
 P.O. Box 89
 Elyria, Ohio 44036

43/849