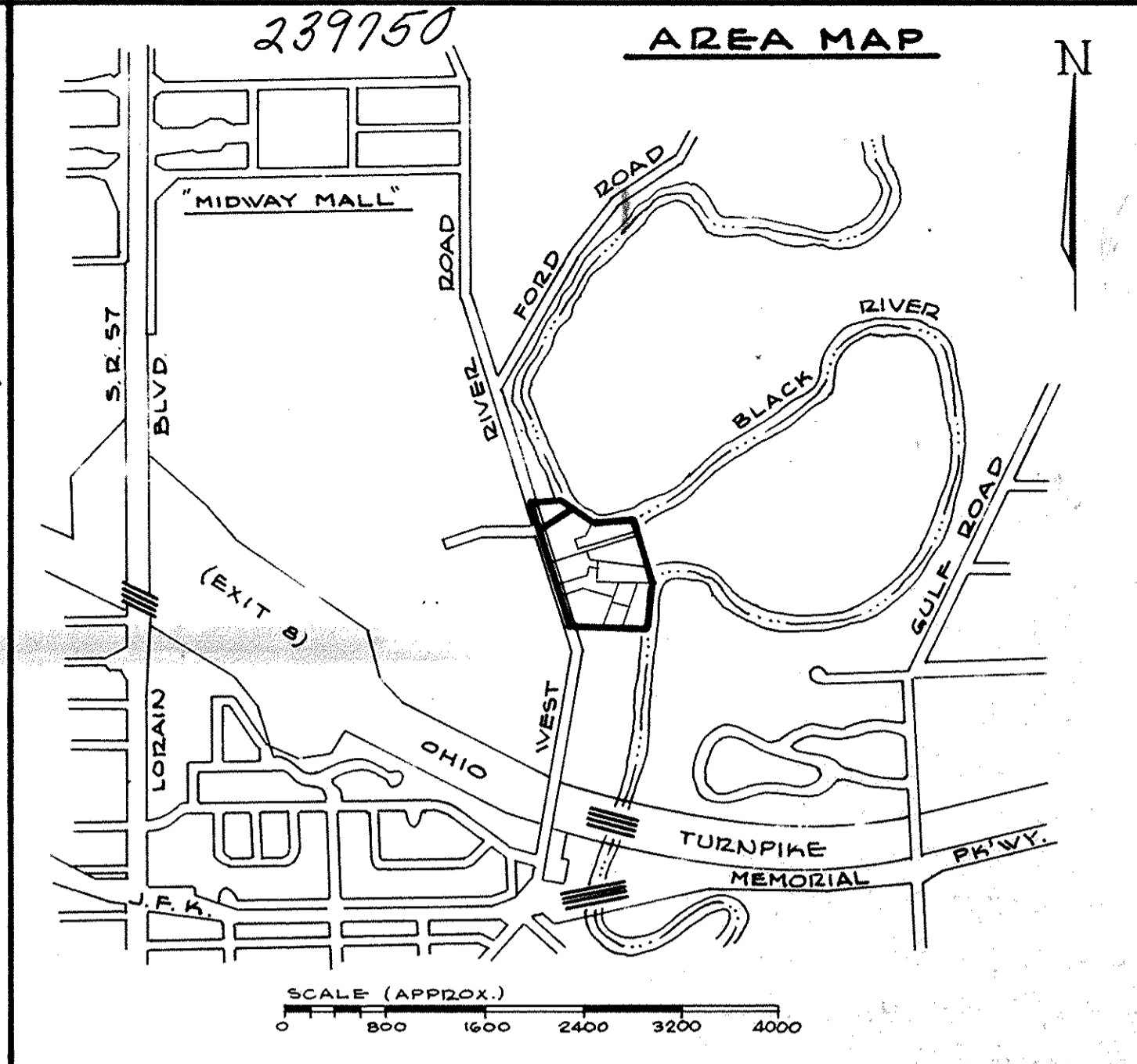
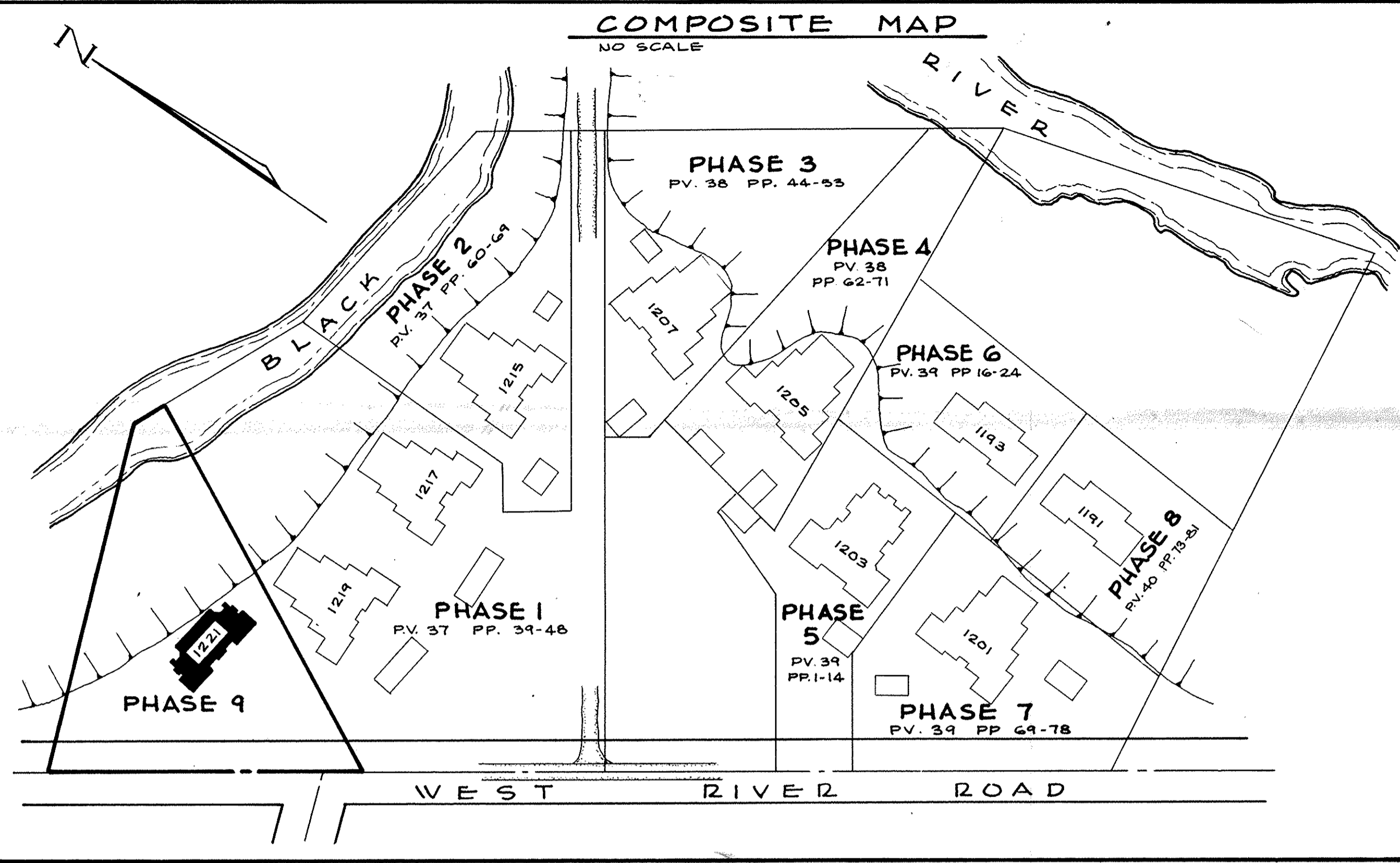
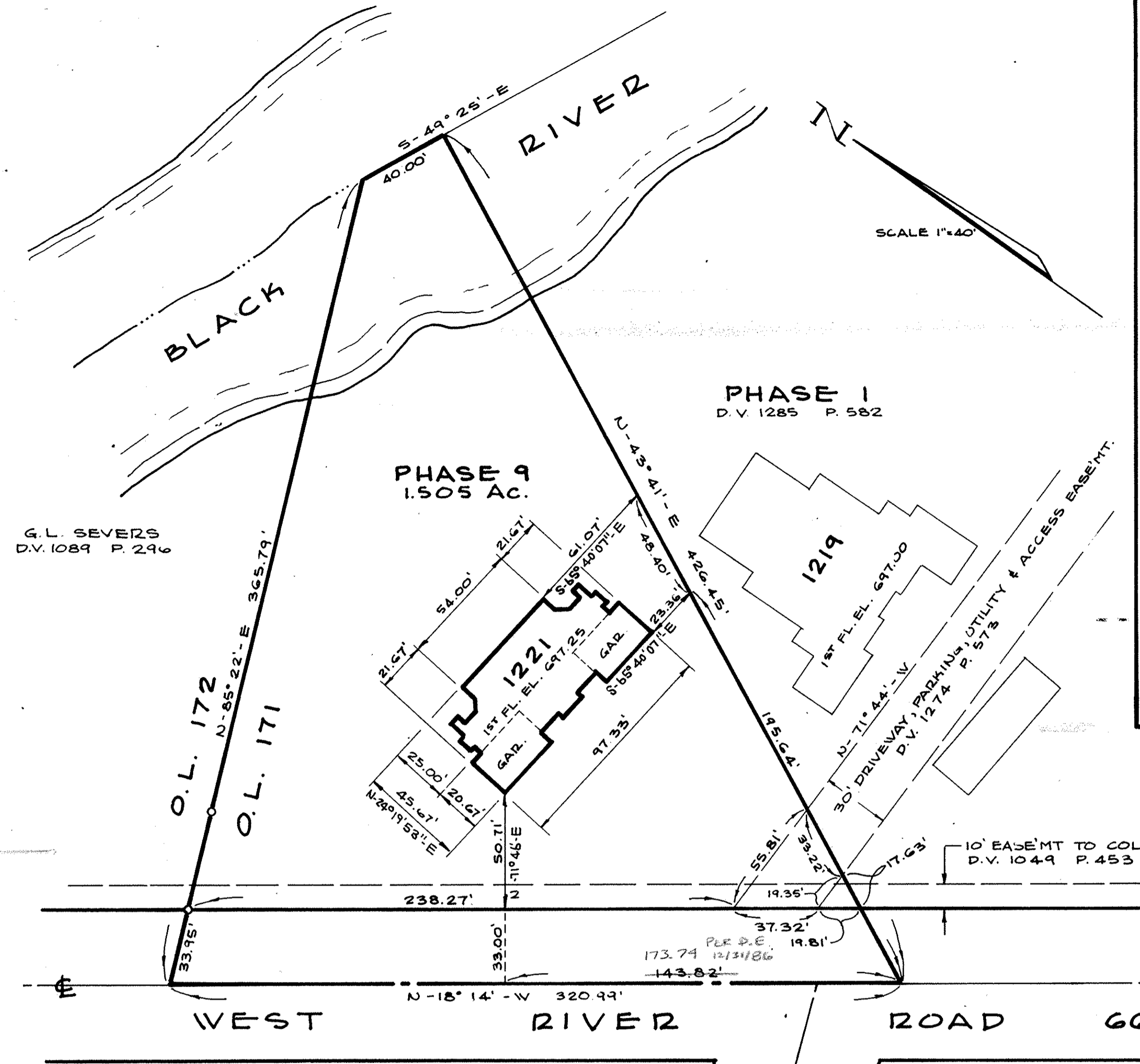


239750

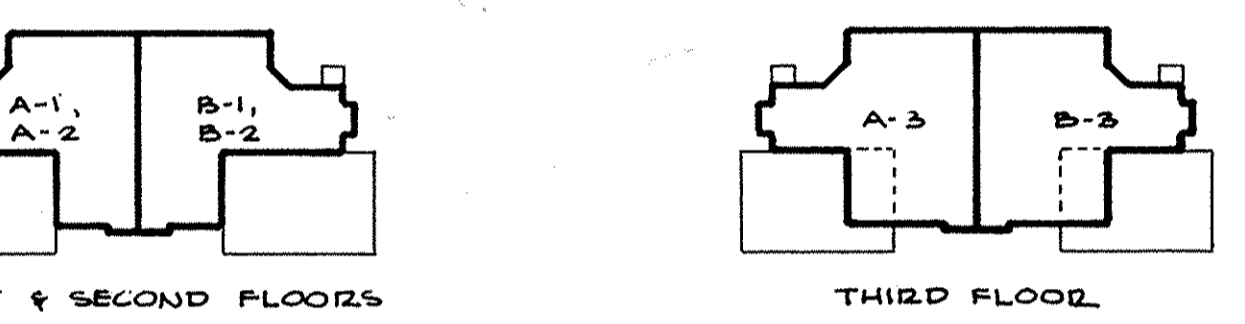
SPRING VALLEY ENTERPRISES
D.V. 937 P.557 P.C.L. N# 6
D.V. 937 P.565 P.C.L. N# 1



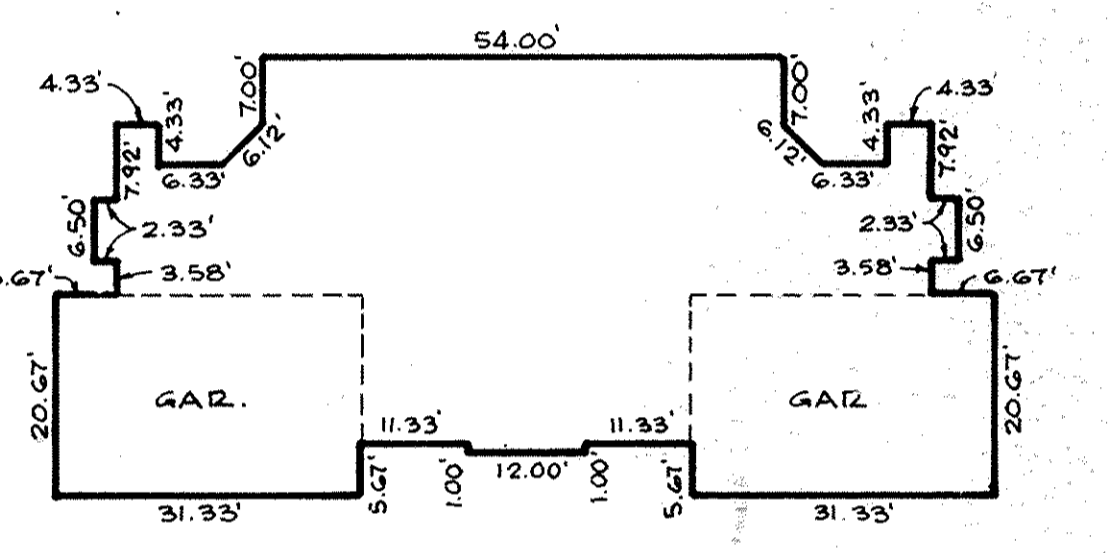
G.L. SEVERS
D.V. 1089 P. 246

PHASE 1
D.V. 1285 P. 582

PHASE 9
1.505 AC.

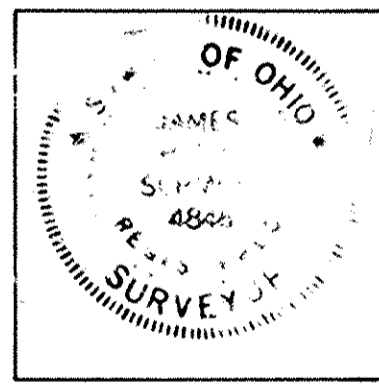


UNIT ARRANGEMENT

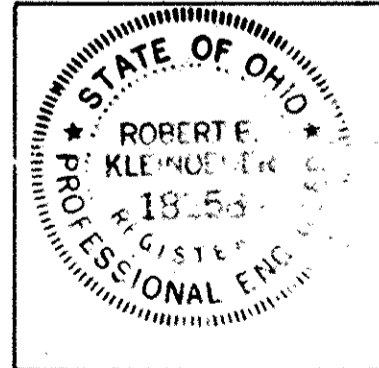


FLOOR PLAN - BUILDING 1221
SCALE 1" = 20'

CERTIFICATION
WE HEREBY CERTIFY THAT THE ATTACHED DRAWINGS CORRECTLY REPRESENT THE BUILDING AS CONSTRUCTED AND THAT THERE ARE NO ENCROACHMENTS ON ANY ADJUTING PREMISES.



James H. Schmidt
JAMES H. SCHMIDT - REG. SURVEYOR N# 4846



Robert E. Kleinoeder
ROBERT E. KLEINOEDER, REG. ENGR. N# 18258

INDEX TO DRAWINGS
SHEET N# 1 - TITLE, SURVEY MAP & MISC.
SHEET N# 2 - FRONT & LEFT ELEVATION
SHEET N# 3 - REAR ELEVATION
SHEET N# 4 - FLOOR PLAN, 1st & 2nd FLOORS
SHEET N# 5 - 3rd FLOOR PLAN

CHERRY RIDGE CONDOMINIUM

10th AMENDMENT - PHASE 9
PART OF ELYRIA TOWNSHIP ORIGINAL LOT 171 - WEST OF BLACK RIVER
CITY OF ELYRIA, COUNTY OF LORAIN, STATE OF OHIO

BOUNDARY & LOCATION MAP

TRANSFERRE
COMPLIANCE WITH SEC
SHIP REV. 1986
DEC 12 1986

JULIAN A. FIJON
ORAIN COUNTY AUDITOR

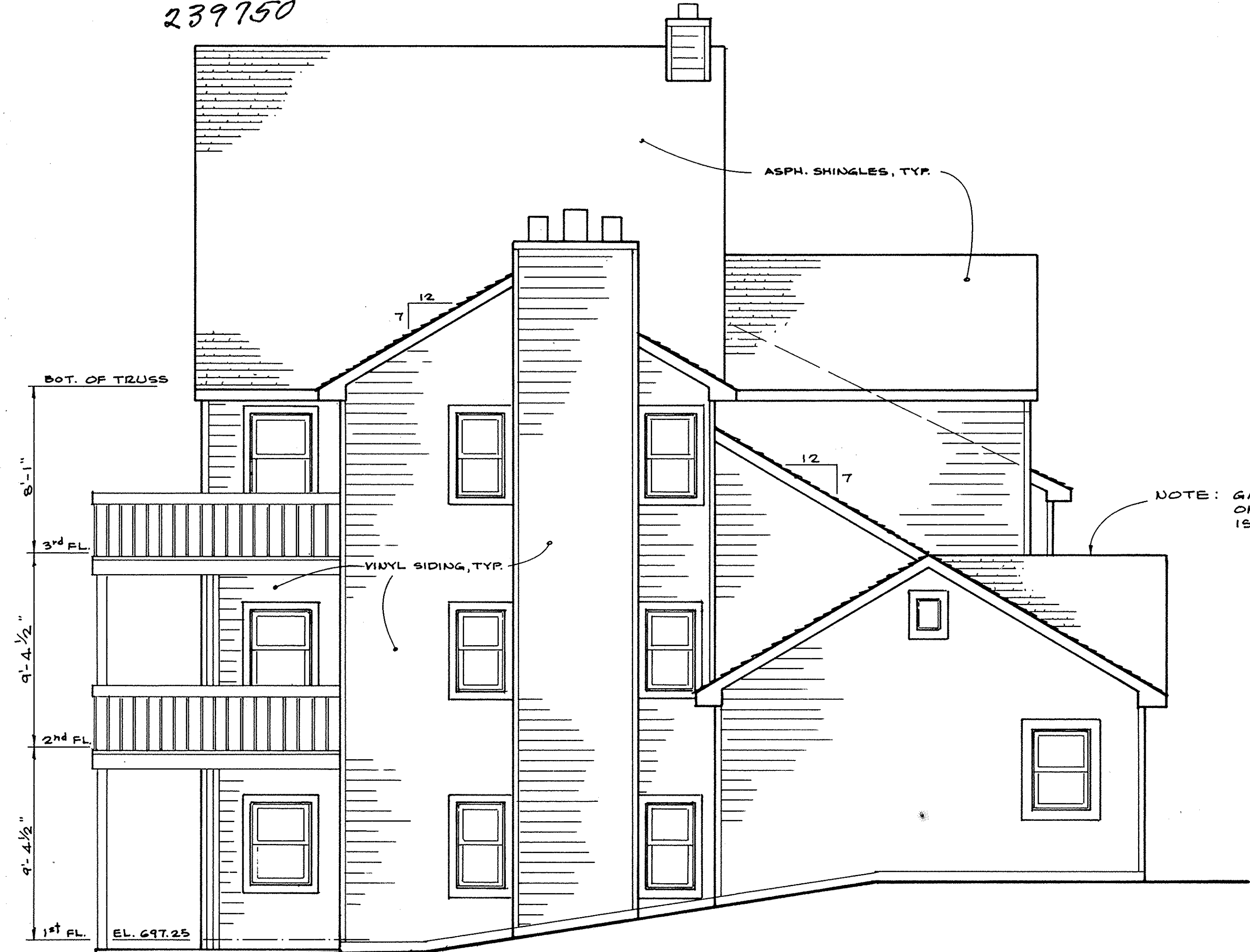
PREPARED FOR:
KOPF CONSTRUCTION CORP.
AVON LAKE, OHIO

PREPARED BY:
KLEINOEDER - SCHMIDT & ASSOC.
ENGINEERS & SURVEYORS
ELYRIA, OHIO
NOV. 21, 1986

Address - Unit #	Square Feet	% of Combined Common Areas & Facilities	Address - Unit #	Square Feet	% of Combined Common Areas & Facilities	Address - Unit #	Square Feet	% of Combined Common Areas & Facilities
1219 West River Road - Unit # A-1	775.	.8863%	1207 West River Road - Unit # A-1	775.	.8863%	1193 West River Road - Unit # A-1	1622.	1.8551%
B-1	775.	.8863%	B-1	775.	.8863%	B-1	1622.	1.8551%
C-1	830.	.9492%	C-1	830.	.9492%	A-2	928.	1.0613%
D-1	830.	.9492%	D-1	830.	.9492%	B-2	928.	1.0613%
A-2	795.	.9092%	A-2	795.	.9092%	A-3	1070.	1.2237%
B-2	795.	.9092%	B-2	795.	.9092%	B-3	1070.	1.2237%
C-2	853.	.9756%	C-2	853.	.9756%			
D-2	853.	.9756%	D-2	853.	.9756%	1201 West River Road - Unit # A-1	775.	.8863%
A-3	795.	.9092%	A-3	795.	.9092%	B-1	775.	.8863%
B-3	795.	.9092%	B-3	795.	.9092%	C-1	830.	.9492%
C-3	853.	.9756%	C-3	853.	.9756%	D-1	830.	.9492%
D-3	853.	.9756%	D-3	853.	.9756%	A-2	795.	.9092%
						B-2	795.	.9092%
1217 West River Road - Unit # A-1	775.	.8863%	1205 West River Road - Unit # A-1	775.	.8863%	C-2	853.	.9756%
B-1	775.	.8863%	B-1	775.	.8863%	D-2	853.	.9756%
C-1	830.	.9492%	C-1	830.	.9492%	A-3	795.	.9092%
D-1	830.	.9492%	D-1	830.	.9492%	B-3	795.	.9092%
A-2	795.	.9092%	A-2	795.	.9092%	C-3	853.	.9756%
B-2	795.	.9092%	B-2	795.	.9092%	D-3	853.	.9756%
C-2	853.	.9756%	C-2	853.	.9756%			
D-2	853.	.9756%	D-2	853.	.9756%	1191 West River Road - Unit # A-1	1622.	1.8551%
A-3	795.	.9092%	A-3	795.	.9092%	B-1	1622.	1.8551%
B-3	795.	.9092%	B-3	795.	.9092%	A-2	1194.	1.3655%
C-3	853.	.9756%	C-3	853.	.9756%	B-2	928.	1.0613%
D-3	853.	.9756%	D-3	853.	.9756%	A-3	1070.	1.2237%
						B-3	1070.	1.2237%
1215 West River Road - Unit # A-1	775.	.8863%	1203 West River Road - Unit # A-1	710.	.8120%	1221 West River Road - Unit # A-1	758.	.8869%
B-1	775.	.8863%	B-1	710.	.8120%	B-1	758.	.8869%
C-1	830.	.9492%	A-3	710.	.8120%	A-2	775.	.8863%
D-1	830.	.9492%	A-4	710.	.8120%	B-2	775.	.8863%
A-2	795.	.9092%	B-1	794.	.9081%	A-3	869.	.9939%
B-2	795.	.9092%	B-2	794.	.9081%	B-3	869.	.9939%
C-2	853.	.9756%	C-1	818.	.9355%			
D-2	853.	.9756%	C-2	818.	.9355%			
A-3	795.	.9092%	D-1	753.	.8612%			
B-3	795.	.9092%	D-2	753.	.8612%			
C-3	853.	.9756%	D-3	753.	.8612%			
D-3	853.	.9756%	D-4	753.	.8612%			

PERCENTAGES OF OWNERSHIP

DEC 12 1986
LORAIN COUNTY RECORDS
Box: Lorain Co. Title
216 MR
1/5



NOTE: GABLE SHOWN OCCURS ON LEFT GARAGE ONLY. OTHERWISE THE RIGHT ELEVATION IS SIMILAR AND OPPOSITE.

LEFT ELEVATION
SCALE 1/4"=1'-0"



FRONT ELEVATION
SCALE 1/4"=1'-0"

PREPARED BY:
KLEINODER - SCHMIDT & ASSOC.
ENGINEERS & SURVEYORS
ELYRIA, OHIO NOV. 21, 1986

CHERRY RIDGE CONDOMINIUM - PHASE 9
ELYRIA, OHIO

LORAIN COUNTY
TAX MAP DEPARTMENT

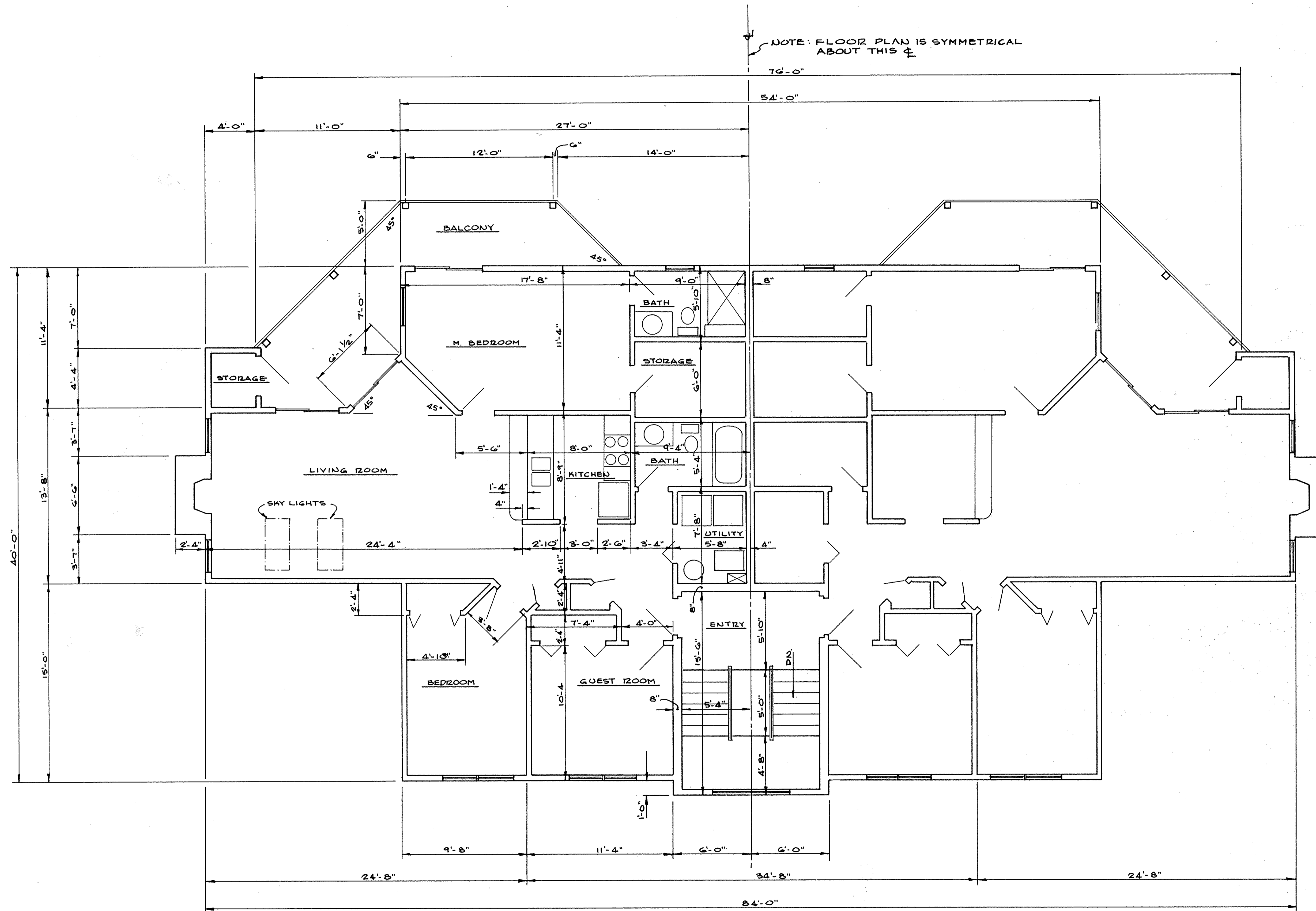


REAR ELEVATION

SCALE 1/4"=1'-0"

PREPARED BY:
KLEINODER - SCHMIDT & ASSOC.
ENGINEERS & SURVEYORS
ELYRIA, OHIO NOV. 21, 1986

CHERRY RIDGE CONDOMINIUM - PHASE 9
ELYRIA, OHIO



PLAN - THIRD FLOOR
 SCALE 1/4" = 1'-0"

PREPARED BY:
KLEINODER - SCHMIDT & ASSOC.
 ENGINEERS & SURVEYORS
 ELYRIA, OHIO NOV 21, 1986

CHERRY RIDGE CONDOMINIUM - PHASE 9
 ELYRIA, OHIO