

# CENTERLINE SURVEY PLAT

## INDUSTRIAL PARKWAY, SECOND & THIRD STREETS

LORAIN COUNTY, CITY OF ELYRIA, ELYRIA TWP, R-17-W, T-6-N

WEST OF THE RIVER

**NOTE -**

STANDARD MONUMENT ASSEMBLIES AS LISTED HEREON ARE TO BE PLACED DURING CONSTRUCTION ON 451 PAVEMENTS AND AFTER THE LEVELING COURSE AND PRIOR TO PLACING THE SURFACE COURSES ON 404 PAVEMENTS. REFERENCE MONUMENTS ARE TO BE PLACED AFTER CONSTRUCTION IN THE VICINTY OF THE MONUMENTS IS COMPLETED. ALL MONUMENTS ARE TO BE PLACED UNDER THE DIRECTION OF A REGISTERED SURVEYOR.

ANY ALTERATIONS SHALL BE NOTED AND THE ELYRIA CITY ENGINEER SHALL BE NOTIFIED OF THE NEW LOCATION.

DATE	NO. OF SHEETS	F.W.A. REGION	STATE	PROJECT
03/534(10)	5	OHIO		

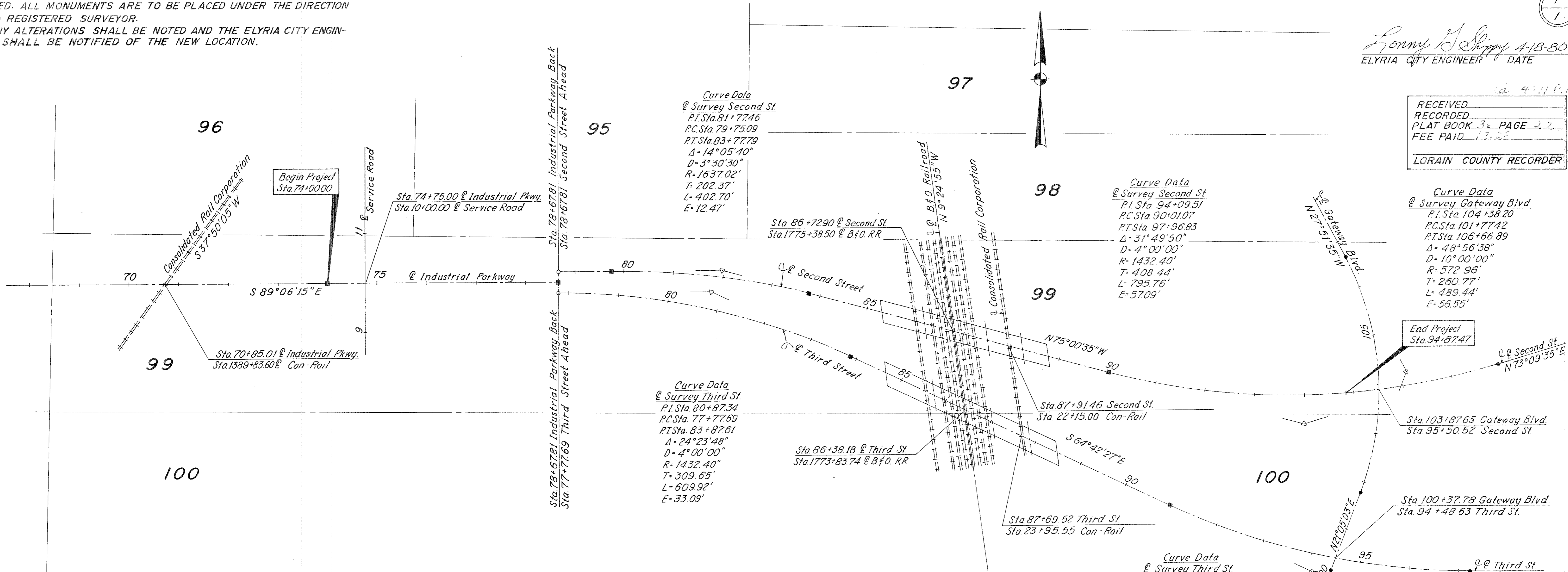
MSA 15 (1)

LORAIN COUNTY  
CITY OF ELYRIA  
INDUSTRIAL PARKWAY  
R/W PLANS 0 200

*Lonny B. Shipley* 4-18-80  
ELYRIA CITY ENGINEER DATE

RECEIVED  
RECORDED  
PLAT BOOK 3 PAGE 27  
FEE PAID 17.50

LORAIN COUNTY RECORDER



- ~ DENOTES EXISTING MONUMENT
- ~ DENOTES MONUMENT ASSEMBLIES AS PER STD. DWG. MC-1 (REV. 6-13-69)

MONUMENT ASSEMBLY LOCATIONS			
QUANTITY	STATION	LOCATION	REMARKS
1	74+00	@ Industrial Pkwy	P.O.T.
1	78+67.81	@ Industrial Pkwy	P.O.T.
1	79+75.09	@ Second St.	P.C.
1	83+77.79	@ Second St.	P.T.
1	90+01.07	@ Second St.	P.C.
1	83+87.61	@ Third St.	P.T.
1	90+97.79	@ Third St.	P.C.
TOTAL	7		

PREPARED BY  
**RICHLAND ENGINEERING LTD.**  
CONSULTING ENGINEERS  
MANSFIELD, OHIO

I HEREBY CERTIFY THAT THIS PLAT IS A TRUE DELINEATION OF A SURVEY MADE FOR THE CITY OF ELYRIA IN 1976 BY RICHLAND ENGINEERING LIMITED CONSULTING ENGINEERS.

*Richard D. Keller* 8/7/79  
REG. SURVEYOR NO. 5648 DATE