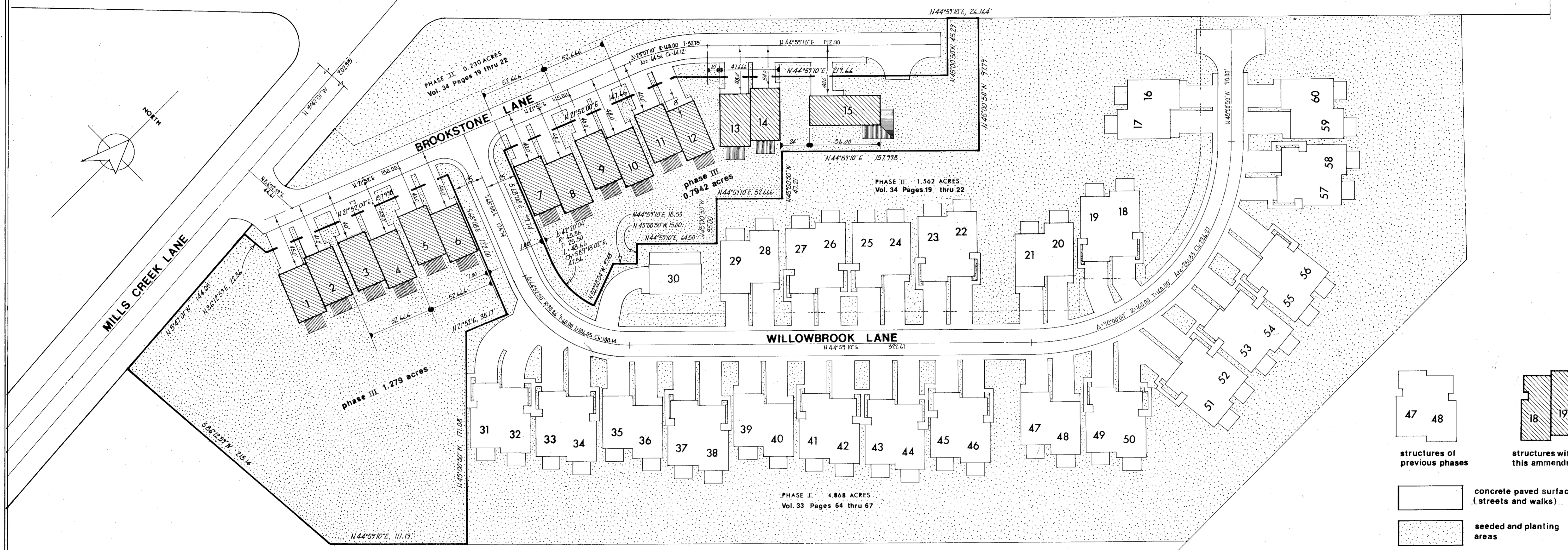
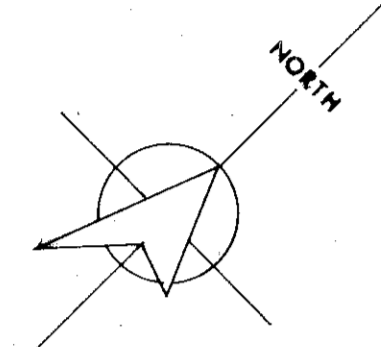
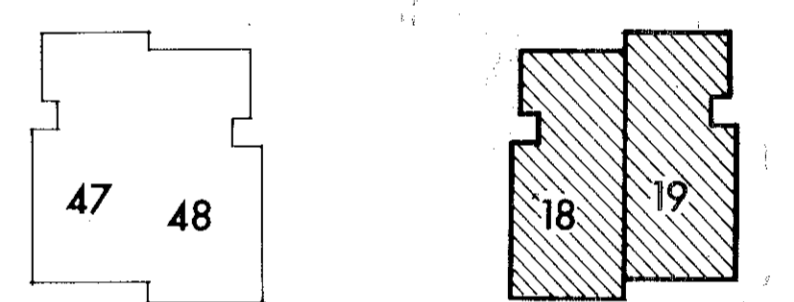


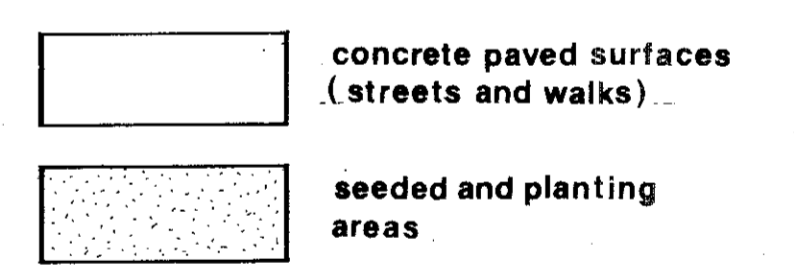
CENTER RIDGE ROAD U.S. ROUTE 20





 structures of previous phases

 structures within this amendment



 concrete paved surfaces (streets and walks)

 seeded and planting areas

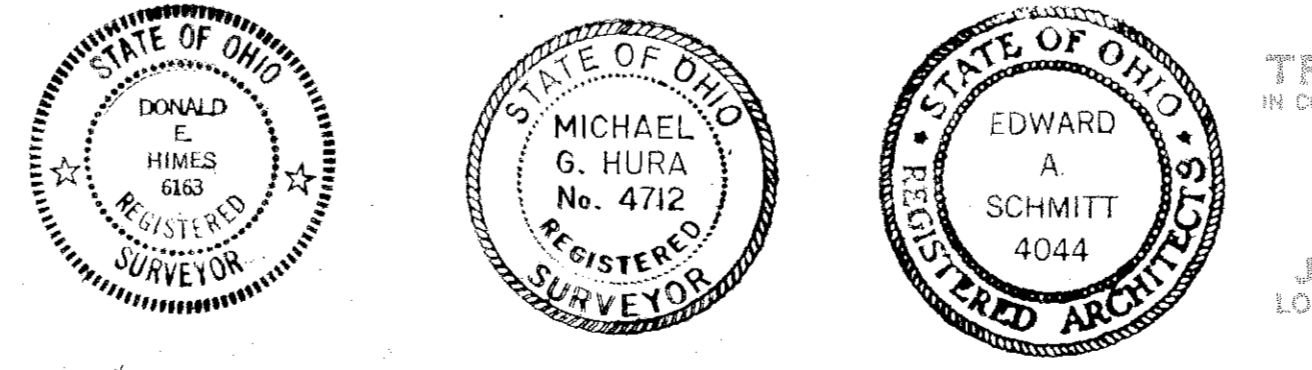
unit no.	address	model no.	unit area in square feet	ELEVATIONS			% of ownership in common areas	
				garage floor	first floor	second floor	at declaration	amendment
1	37177 BROOKSTONE	2160	2160	722.00	722.44	722.46		1.680
2	37178 BROOKSTONE	2160	2160	722.00	722.44	722.46		1.680
3	37179 BROOKSTONE	2160	2160	722.00	722.44	722.46		1.680
4	37180 BROOKSTONE	2160	2160	722.00	722.44	722.46		1.680
5	37181 BROOKSTONE	2160	2160	722.00	722.44	722.46		1.680
6	37182 BROOKSTONE	2160	2160	722.00	722.44	722.46		1.680
7	37183 BROOKSTONE	2160	2160	722.00	722.44	722.46		1.680
8	37184 BROOKSTONE	2160	2160	722.00	722.44	722.46		1.680
9	37185 BROOKSTONE	2160	2160	722.00	722.44	722.46		1.680
10	37186 BROOKSTONE	2160	2160	722.00	722.44	722.46		1.680
11	37187 BROOKSTONE	2160	2160	722.00	722.44	722.46		1.680
12	37188 BROOKSTONE	2160	2160	722.00	722.44	722.46		1.680
13	37189 BROOKSTONE	2160	2160	722.00	722.44	722.46		1.680
14	37190 BROOKSTONE	2160	2160	722.00	722.44	722.46		1.680
15	37191 BROOKSTONE	2160	2160	722.00	722.44	722.46		1.680
16	37192 BROOKSTONE	2160	2160	722.00	722.44	722.46		1.680
17	37193 BROOKSTONE	2160	2160	722.00	722.44	722.46		1.680
18	37194 BROOKSTONE	2160	2160	722.00	722.44	722.46		1.680
19	37195 BROOKSTONE	2160	2160	722.00	722.44	722.46		1.680
20	37196 BROOKSTONE	2160	2160	722.00	722.44	722.46		1.680
21	37197 BROOKSTONE	2160	2160	722.00	722.44	722.46		1.680
22	37198 BROOKSTONE	2160	2160	722.00	722.44	722.46		1.680
23	37199 BROOKSTONE	2160	2160	722.00	722.44	722.46		1.680
24	37200 BROOKSTONE	2160	2160	722.00	722.44	722.46		1.680
25	37201 BROOKSTONE	2160	2160	722.00	722.44	722.46		1.680
26	37202 BROOKSTONE	2160	2160	722.00	722.44	722.46		1.680
27	37203 BROOKSTONE	2160	2160	722.00	722.44	722.46		1.680
28	37204 BROOKSTONE	2160	2160	722.00	722.44	722.46		1.680
29	37205 BROOKSTONE	2160	2160	722.00	722.44	722.46		1.680
30	37206 BROOKSTONE	2160	2160	722.00	722.44	722.46		1.680
31	37207 WILLOWBROOK	2160	2160	722.00	722.44	722.46		1.680
32	37208 WILLOWBROOK	2160	2160	722.00	722.44	722.46		1.680
33	37209 WILLOWBROOK	2160	2160	722.00	722.44	722.46		1.680
34	37210 WILLOWBROOK	2160	2160	722.00	722.44	722.46		1.680
35	37211 WILLOWBROOK	2160	2160	722.00	722.44	722.46		1.680
36	37212 WILLOWBROOK	2160	2160	722.00	722.44	722.46		1.680
37	37213 WILLOWBROOK	2160	2160	722.00	722.44	722.46		1.680
38	37214 WILLOWBROOK	2160	2160	722.00	722.44	722.46		1.680
39	37215 WILLOWBROOK	2160	2160	722.00	722.44	722.46		1.680
40	37216 WILLOWBROOK	2160	2160	722.00	722.44	722.46		1.680
41	37217 WILLOWBROOK	2160	2160	722.00	722.44	722.46		1.680
42	37218 WILLOWBROOK	2160	2160	722.00	722.44	722.46		1.680
43	37219 WILLOWBROOK	2160	2160	722.00	722.44	722.46		1.680
44	37220 WILLOWBROOK	2160	2160	722.00	722.44	722.46		1.680
45	37221 WILLOWBROOK	2160	2160	722.00	722.44	722.46		1.680
46	37222 WILLOWBROOK	2160	2160	722.00	722.44	722.46		1.680
47	37223 WILLOWBROOK	2160	2160	722.00	722.44	722.46		1.680
48	37224 WILLOWBROOK	2160	2160	722.00	722.44	722.46		1.680
49	37225 WILLOWBROOK	2160	2160	722.00	722.44	722.46		1.680
50	37226 WILLOWBROOK	2160	2160	722.00	722.44	722.46		1.680
51	37227 WILLOWBROOK	2160	2160	722.00	722.44	722.46		1.680
52	37228 WILLOWBROOK	2160	2160	722.00	722.44	722.46		1.680
53	37229 WILLOWBROOK	2160	2160	722.00	722.44	722.46		1.680
54	37230 WILLOWBROOK	2160	2160	722.00	722.44	722.46		1.680
55	37231 WILLOWBROOK	2160	2160	722.00	722.44	722.46		1.680
56	37232 WILLOWBROOK	2160	2160	722.00	722.44	722.46		1.680
57	37233 WILLOWBROOK	2160	2160	722.00	722.44	722.46		1.680
58	37234 WILLOWBROOK	2160	2160	722.00	722.44	722.46		1.680
59	37235 WILLOWBROOK	2160	2160	722.00	722.44	722.46		1.680
60	37236 WILLOWBROOK	2160	2160	722.00	722.44	722.46		1.680

WE, THE UNDERSIGNED DONALD E. HIMES AND MICHAEL G. HURA, REGISTERED SURVEYORS, AND EDWARD A. SCHMITT, REGISTERED ARCHITECT, HEREBY CERTIFY THAT THE WITHIN DRAWINGS (SHEETS NUMBERED 1 THROUGH 2 INCLUSIVE) FOR CREEKSTONE COMMONS CONDOMINIUM, ACCURATELY SHOW THE BUILDINGS AS CONSTRUCTED.

Donald E. Himes
 DONALD E. HIMES
 REGISTERED SURVEYOR #6163

 Michael G. Hura
 MICHAEL G. HURA
 REGISTERED SURVEYOR #4712

 Edward A. Schmitt
 EDWARD A. SCHMITT
 REGISTERED ARCHITECT #4044



TRANSFERRED
 IN COMPLIANCE WITH SEC. 319-202
 OHIO REV. CODE
 FEB 1 1979
 JULIAN A. PIJOR
 LORAIN COUNTY AUDITOR

SECOND AMENDMENT: parcel A and parcel B residue as recorded in Volume 34, Pages 19 thru 22

PHASE III

CREEKSTONE COMMONS

CONDOMINIUM

Parts of Original Lots 5 & 6 of Ridgeville Township
 now City of North Ridgeville, Lorain Co., Ohio
 Nov. 1978 Scale 1" = 40'

Donald E. Himes _____ Registered Surveyor
 Michael G. Hura _____ Registered Surveyor
 Edward A. Schmitt _____ Registered Architect

Received for Record
 on 2:49 clock P.M. in PLAT RECORD
 VOL 34
 PAGE 51-52
 Dorothy L. Esser
 Lorain County Recorder

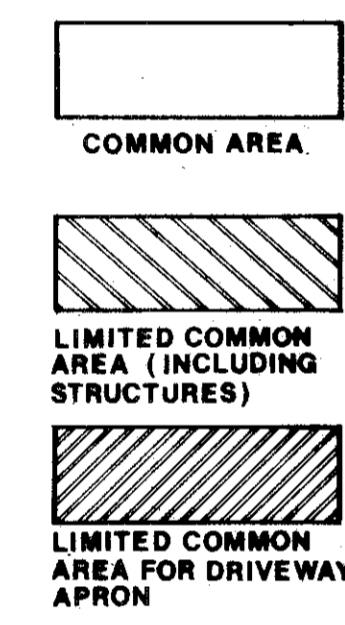
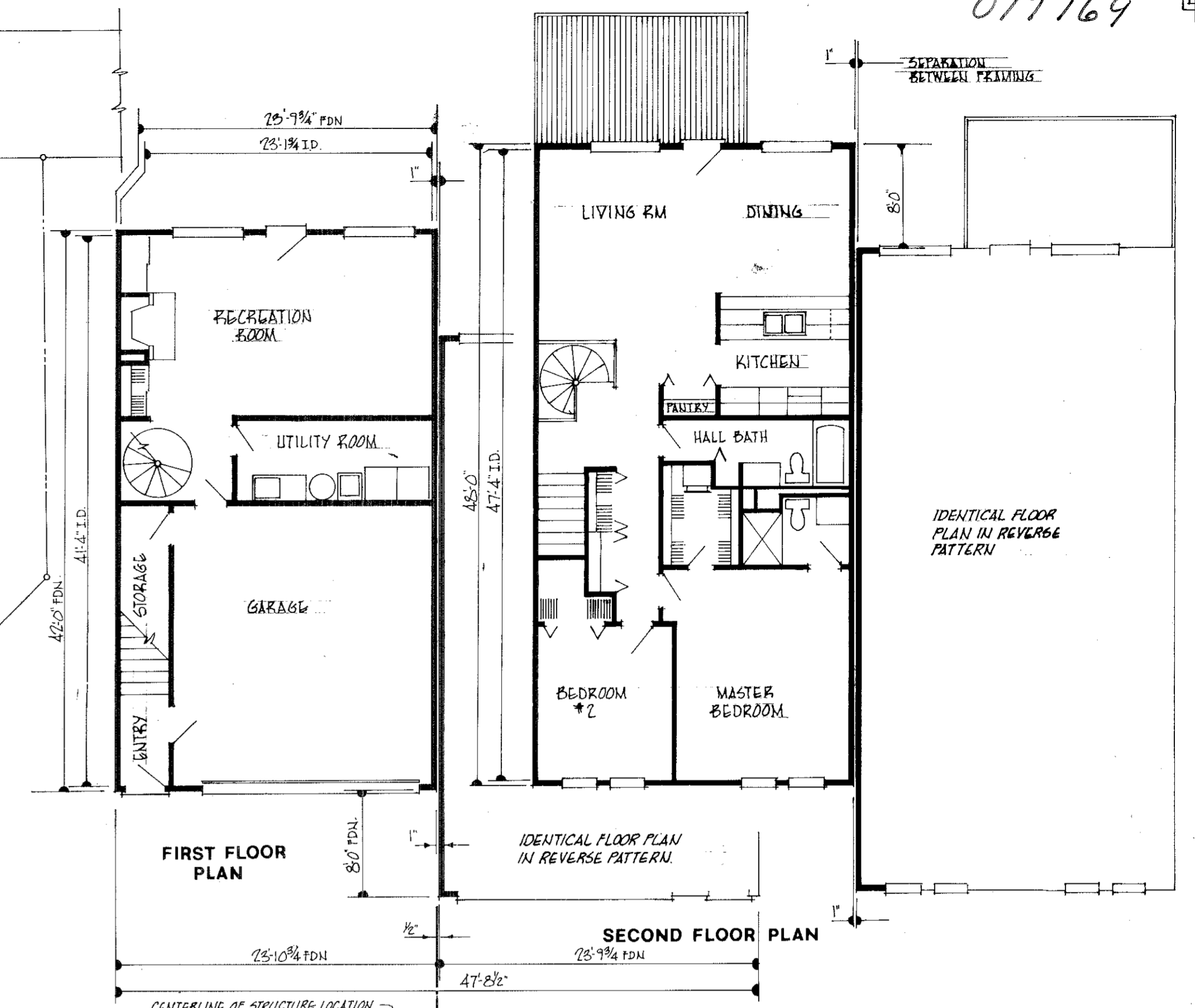
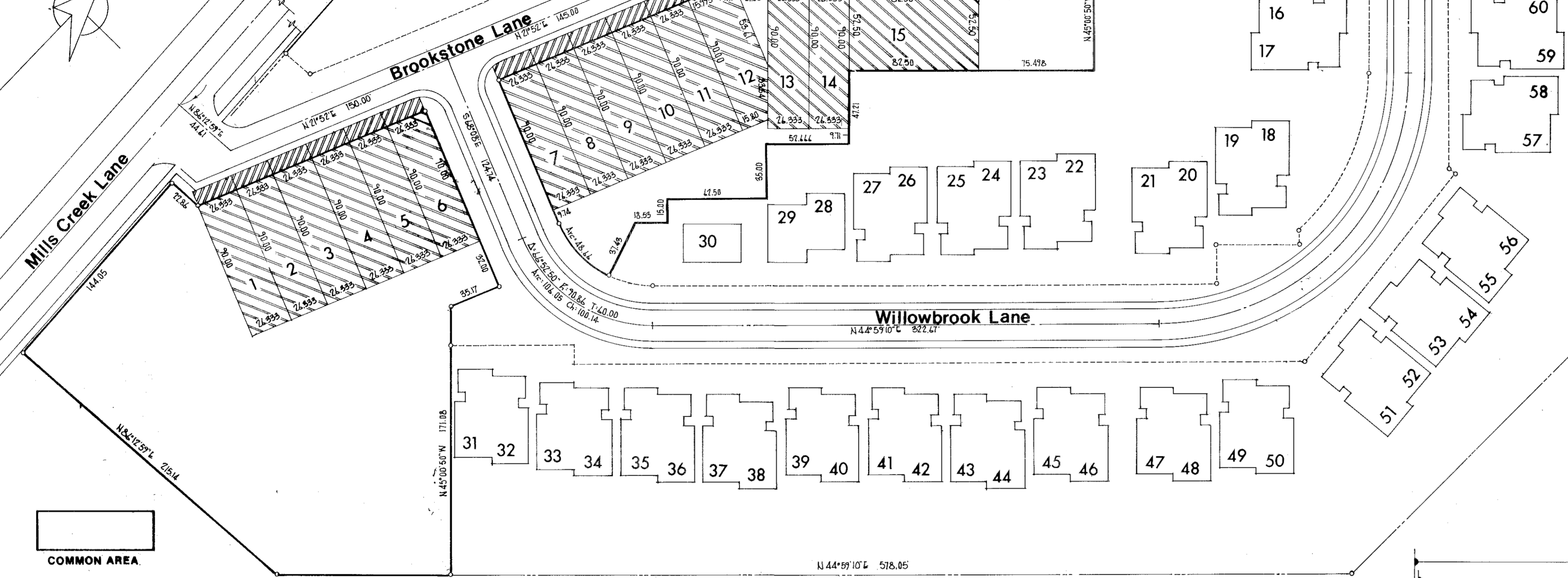
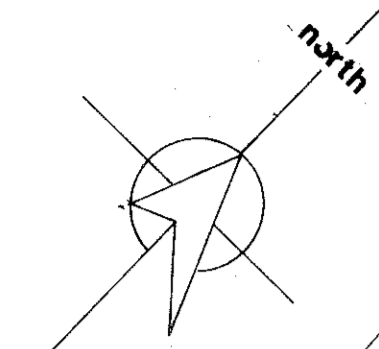
\$34.56 By: Lawrence J. Little S.R.

REPRODUCTION

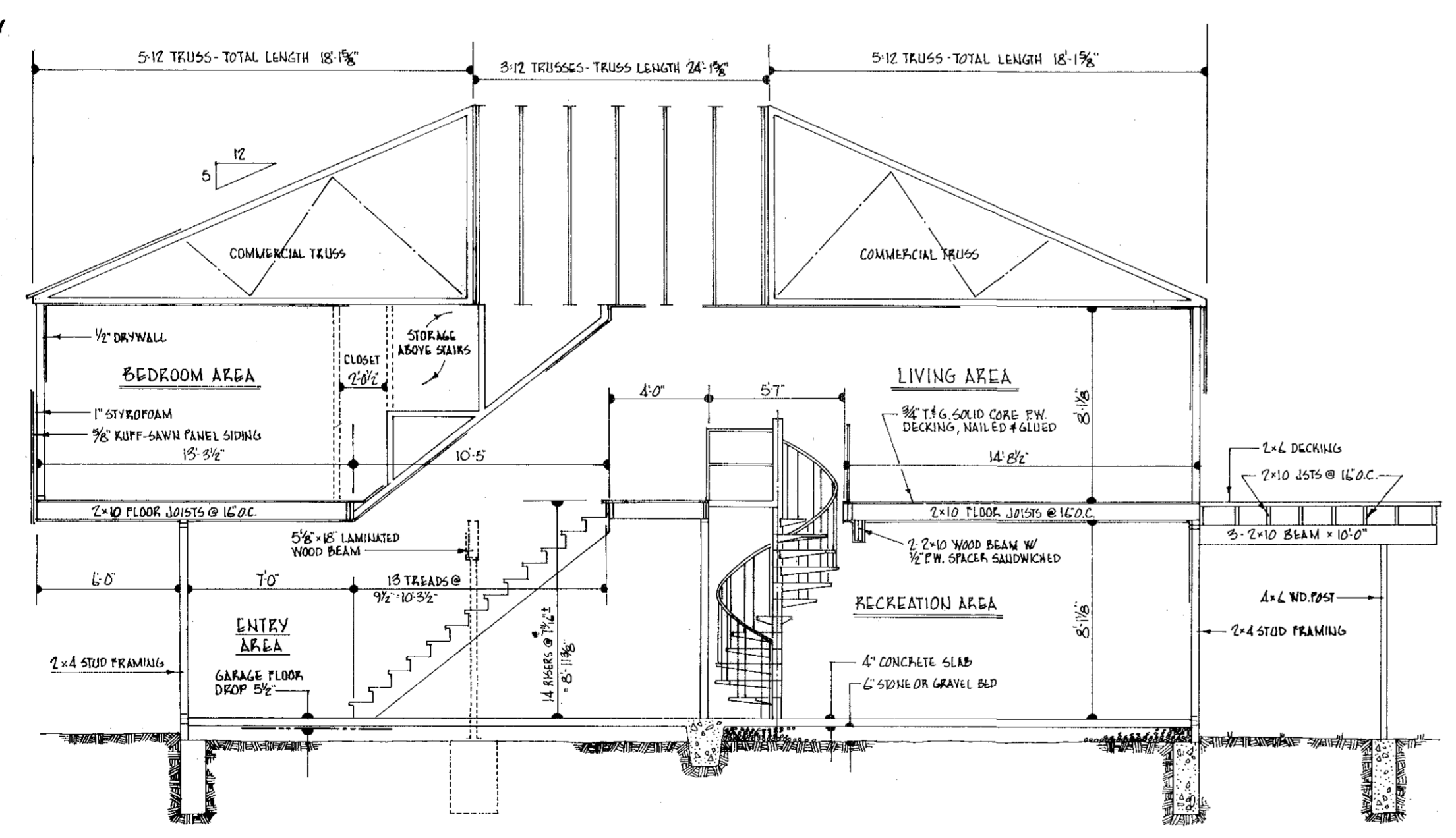
017769

017769

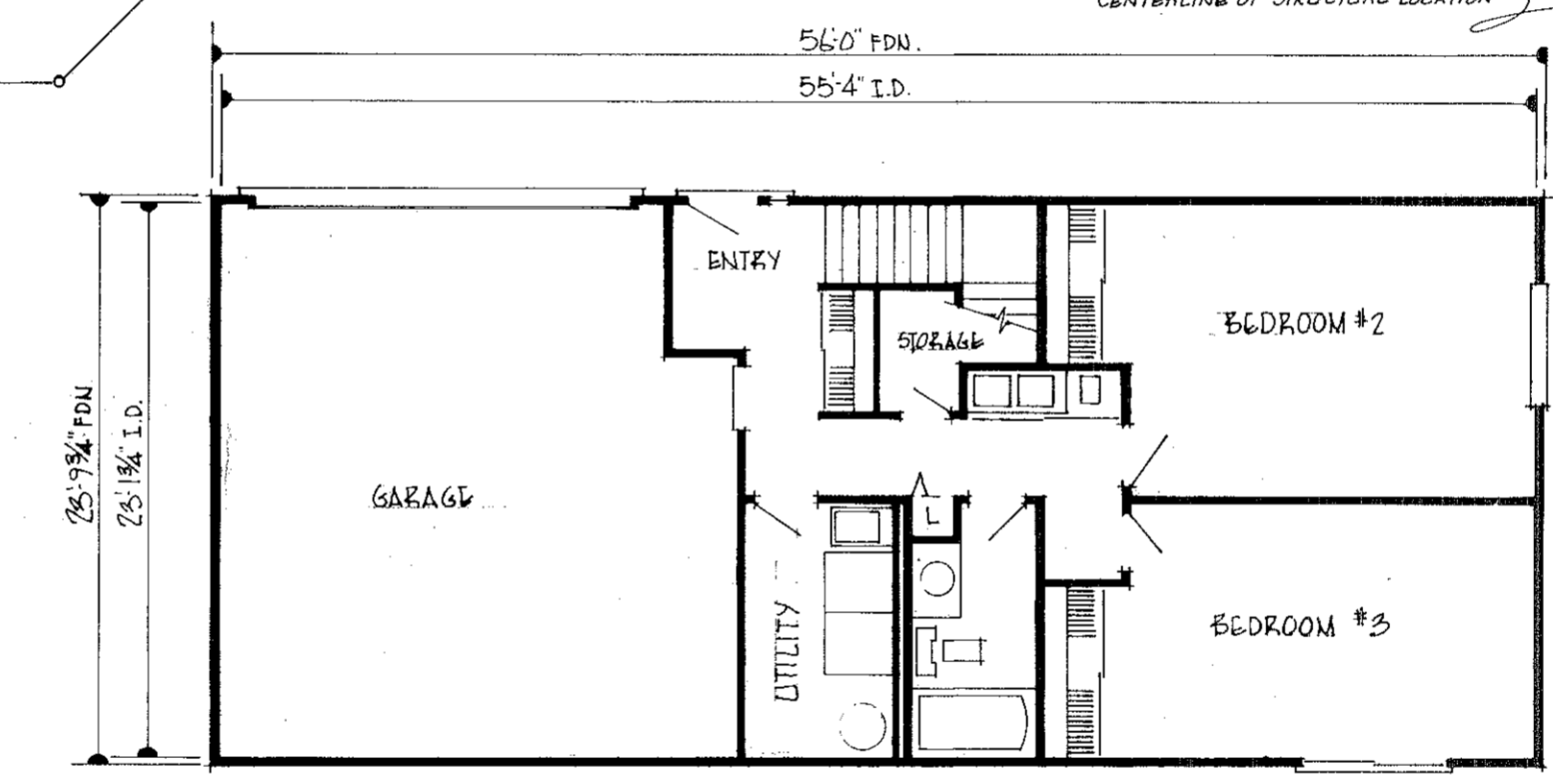
Center Ridge Road U.S. Route 20



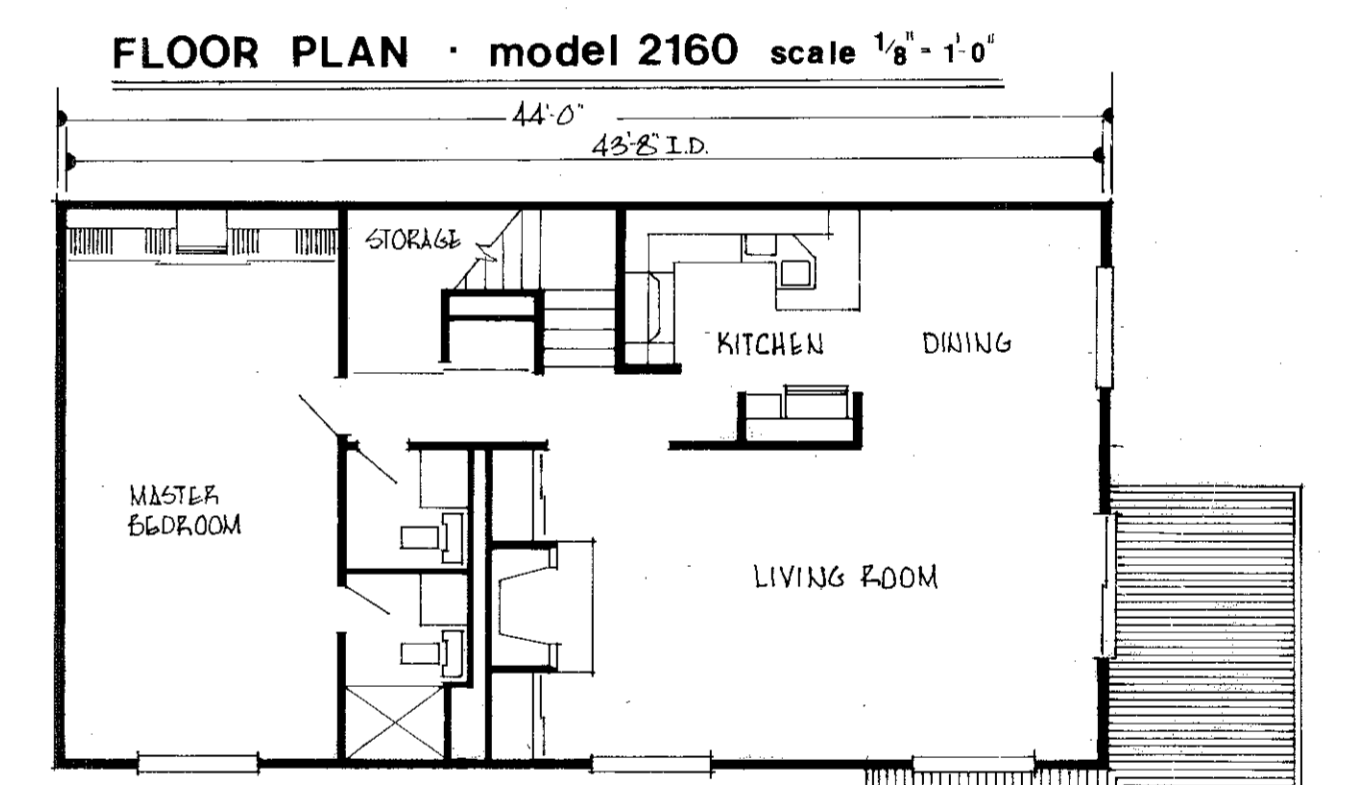
definition of common and limited common areas Scale 1"=50'



SECTION THRU CONSTRUCTION - MODEL 2160 (TRUSS ARRANGEMENT VARIES W/ BUYER SELECTION) No Scale

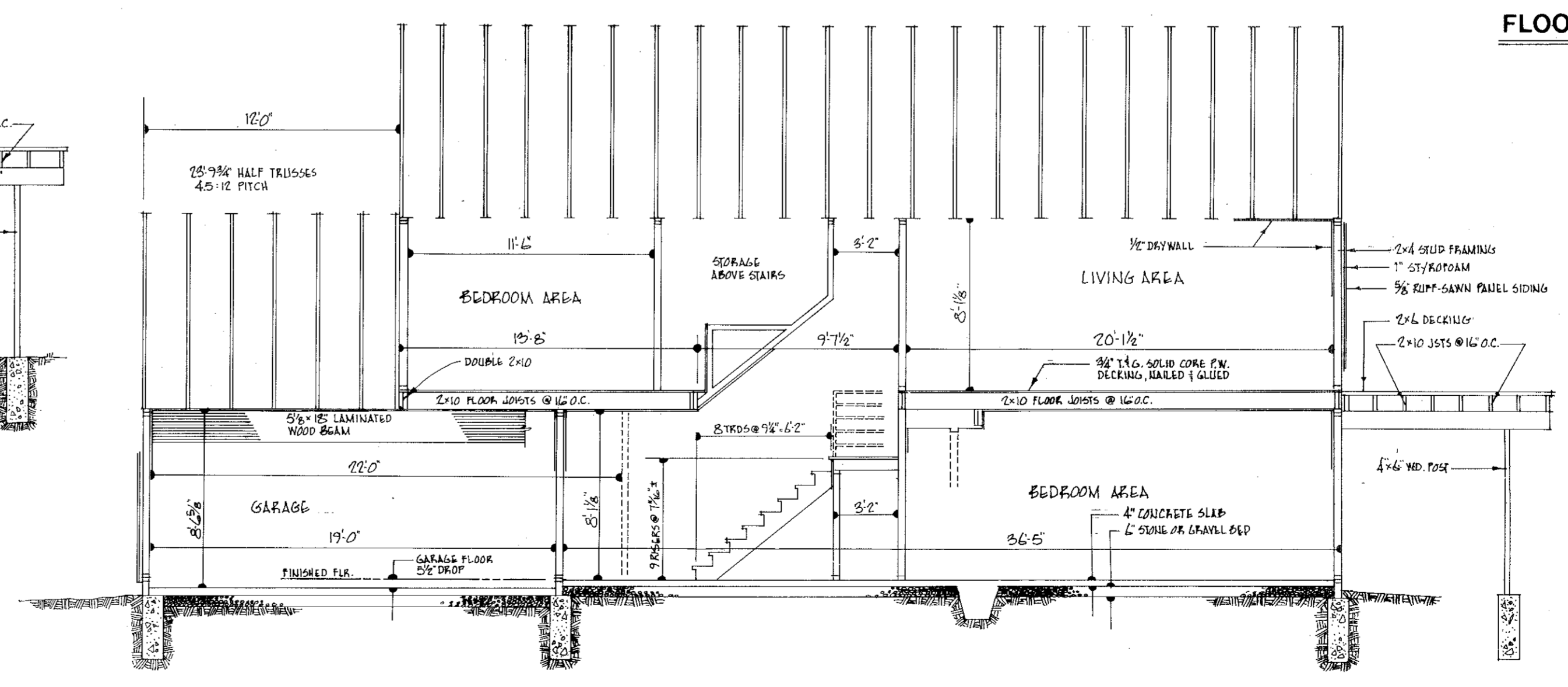


FIRST FLOOR PLAN



SECOND FLOOR PLAN

FLOOR PLAN - model 2381 scale 1/8" = 1'-0"



SECTION THRU CONSTRUCTION - MODEL 2381 No Scale

TRANSFERRED IN COMPLIANCE WITH SEC. 319-202 OHIO REV. CODE FEB 1 1978 JULIAN A. FLJOR LORAIN COUNTY AUDITOR

REPRODUCTION