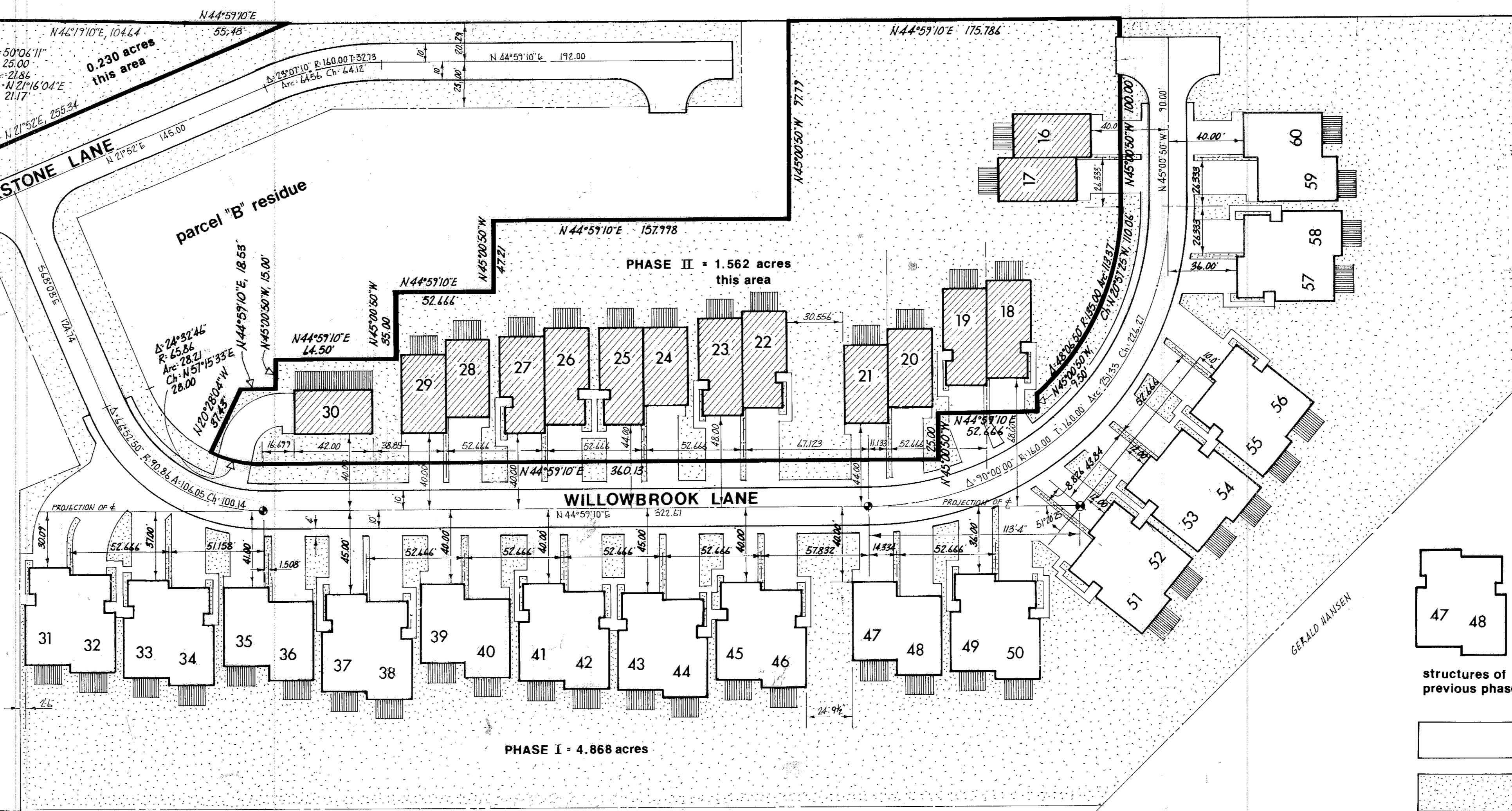
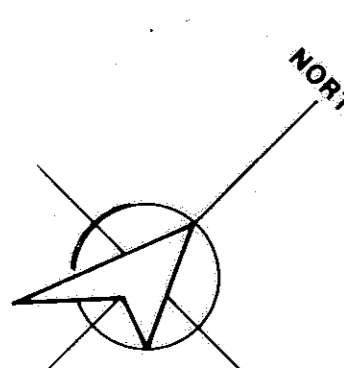


003252

003252

CENTER RIDGE ROAD U.S. Route 20



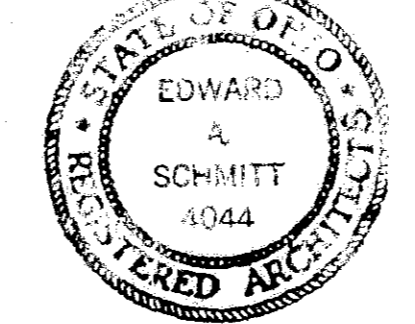
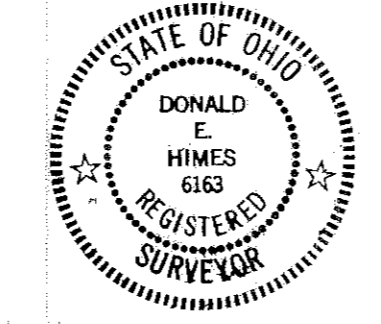
Unit no.	address	model no.	unit area in sq.ft.	ELEVATIONS			% of ownership in common areas		
				garage floor	first floor	second floor	at declaration	amended	amended
17	32670 WILLOWBROOK	2160	2160	725.50	725.94	734.98			2.172
18	32672 WILLOWBROOK	2160	2160	725.50	725.94	734.98			2.172
19	32706 WILLOWBROOK	2202	2202	723.48	723.72	723.96			2.213
20	32708 WILLOWBROOK	2202	2202	723.48	723.72	723.96			2.213
21	32714 WILLOWBROOK	2160	2160	723.30	723.74	723.78			2.172
22	32716 WILLOWBROOK	2160	2160	723.30	723.74	723.78			2.172
23	32722 WILLOWBROOK	2250-A	2250	723.00	723.44	732.48			2.241
24	32724 WILLOWBROOK	2250-A	2250	723.00	723.44	732.48			2.241
25	32730 WILLOWBROOK	2160	2160	722.70	723.14	732.18			2.261
26	32732 WILLOWBROOK	2250-A	2250	722.70	723.14	732.18			2.261
27	32738 WILLOWBROOK	2250-A	2250	722.65	723.09	732.13			2.261
28	32740 WILLOWBROOK	2250-A	2250	722.65	723.09	732.13			2.261
29	32746 WILLOWBROOK	2160	2160	722.47	722.91	731.95			2.172
30	32748 WILLOWBROOK	2160	2160	722.47	722.91	731.95			2.172
31	32756 WILLOWBROOK	2160-A	2160	722.00	722.44	731.48			2.172
32	32779 WILLOWBROOK	2250-D	2250	723.20	723.44	732.68	3.3802	2.261	
33	32777 WILLOWBROOK	2250-D	2250	723.20	723.44	732.68	3.3802	2.261	
34	32760 WILLOWBROOK	2250-D	2250	723.20	723.44	732.68	3.3802	2.261	
35	32763 WILLOWBROOK	2160	2160	723.20	723.44	732.68	3.2450	2.172	
36	32761 WILLOWBROOK	2160	2160	723.20	723.44	732.68	3.2450	2.172	
37	32755 WILLOWBROOK	2250-D	2250	723.20	723.44	732.68	3.3802	2.261	
38	32753 WILLOWBROOK	2250-D	2250	723.20	723.44	732.68	3.3802	2.261	
39	32747 WILLOWBROOK	2160	2160	723.20	723.44	732.68	3.2450	2.172	
40	32745 WILLOWBROOK	2160	2160	723.20	723.44	732.68	3.2450	2.172	
41	32739 WILLOWBROOK	2202	2202	723.53	723.77	733.01	3.3081	2.213	
42	32737 WILLOWBROOK	2202	2202	723.53	723.77	733.01	3.3081	2.213	
43	32731 WILLOWBROOK	2202	2202	723.85	724.29	733.93	3.3081	2.213	
44	32729 WILLOWBROOK	2202	2202	723.85	724.29	733.93	3.3081	2.213	
45	32723 WILLOWBROOK	2250-B	2250	724.20	724.44	733.68	3.3082	2.261	
46	32721 WILLOWBROOK	2250-B	2250	724.20	724.44	733.68	3.3082	2.261	
47	32715 WILLOWBROOK	2160	2160	724.53	724.97	734.01	3.2450	2.172	
48	32713 WILLOWBROOK	2160	2160	724.53	724.97	734.01	3.2450	2.172	
49	32707 WILLOWBROOK	2250-B	2250	724.85	725.29	734.93	3.3802	2.261	
50	32705 WILLOWBROOK	2250-B	2250	724.85	725.29	734.93	3.3802	2.261	
51	32699 WILLOWBROOK	2244-B	2244	725.20	725.64	734.68	3.3802	2.256	
52	32697 WILLOWBROOK	2244-B	2244	725.20	725.64	734.68	3.3802	2.256	
53	32691 WILLOWBROOK	2244-A	2244	725.50	725.94	734.78	3.3712	2.256	
54	32689 WILLOWBROOK	2244-A	2244	725.50	725.94	734.78	3.3712	2.256	
55	32683 WILLOWBROOK	2244-A	2244	725.85	726.29	735.33	3.3712	2.256	
56	32681 WILLOWBROOK	2244-A	2244	725.85	726.29	735.33	3.3712	2.256	
57	32675 WILLOWBROOK	2250-B	2250	726.85	727.29	735.33	3.3802	2.261	
58	32673 WILLOWBROOK	2250-B	2250	726.85	727.29	735.33	3.3802	2.261	
59	32667 WILLOWBROOK	2160	2160	727.20	727.64	734.68	3.2450	2.172	
60	32665 WILLOWBROOK	2160	2160	727.20	727.64	734.68	3.2450	2.172	

WE, THE UNDERSIGNED DONALD E. HIMES AND MICHAEL G. HURA, REGISTERED SURVEYORS, AND EDWARD A. SCHMITT, REGISTERED ARCHITECT, HEREBY CERTIFY THAT THE WITHIN DRAWINGS (SWEETS NUMBERED 1 THROUGH 4 INCLUSIVE) FOR CREEKSTONE COMMONS CONDOMINIUMS, ACCURATELY SHOW THE BUILDINGS AS CONSTRUCTED.

Donald E. Himes
DONALD E. HIMES
REGISTERED SURVEYOR #4113

Michael G. Hura
MICHAEL G. HURA
REGISTERED SURVEYOR #4712

Edward A. Schmitt
EDWARD A. SCHMITT
REGISTERED ARCHITECT #4044



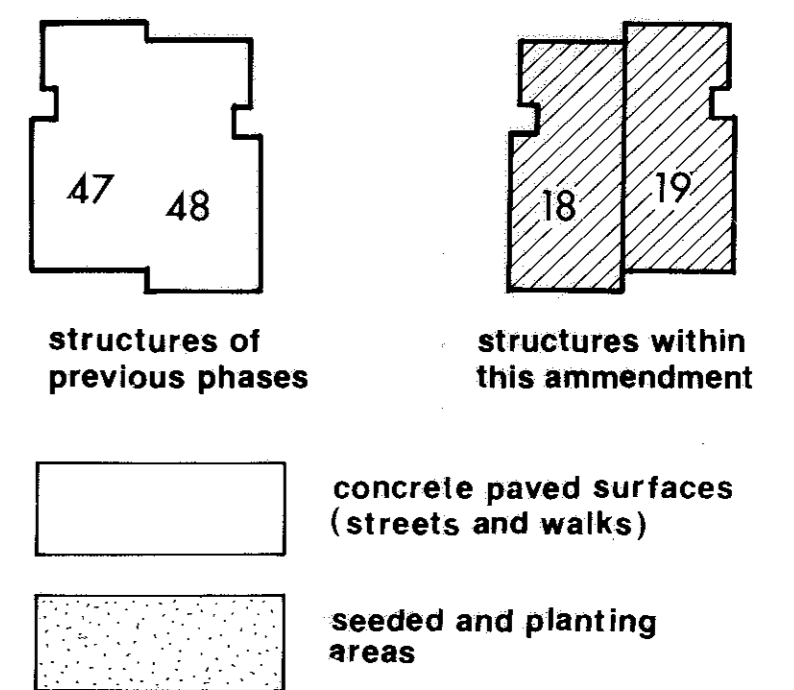
FIRST AMMENDMENT - part of parcel 'B' and all of parcel 'C' as recorded in Volume 33 Pages 64 thru 67

PHASE II
CREEKSTONE COMMONS
CONDOMINIUM

Parts of Original Lots 5 & 6 of Ridgeville Township
now City of North Ridgeville, Lorain Co., Ohio

May 1978 Scale 1" = 40'

Donald E. Himes Registered Surveyor
Michael G. Hura Registered Surveyor
Edward A. Schmitt Registered Architect

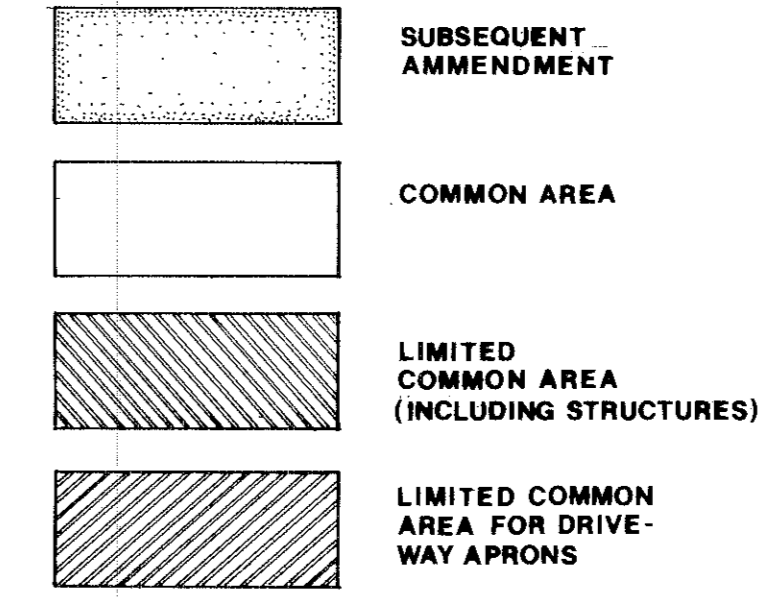
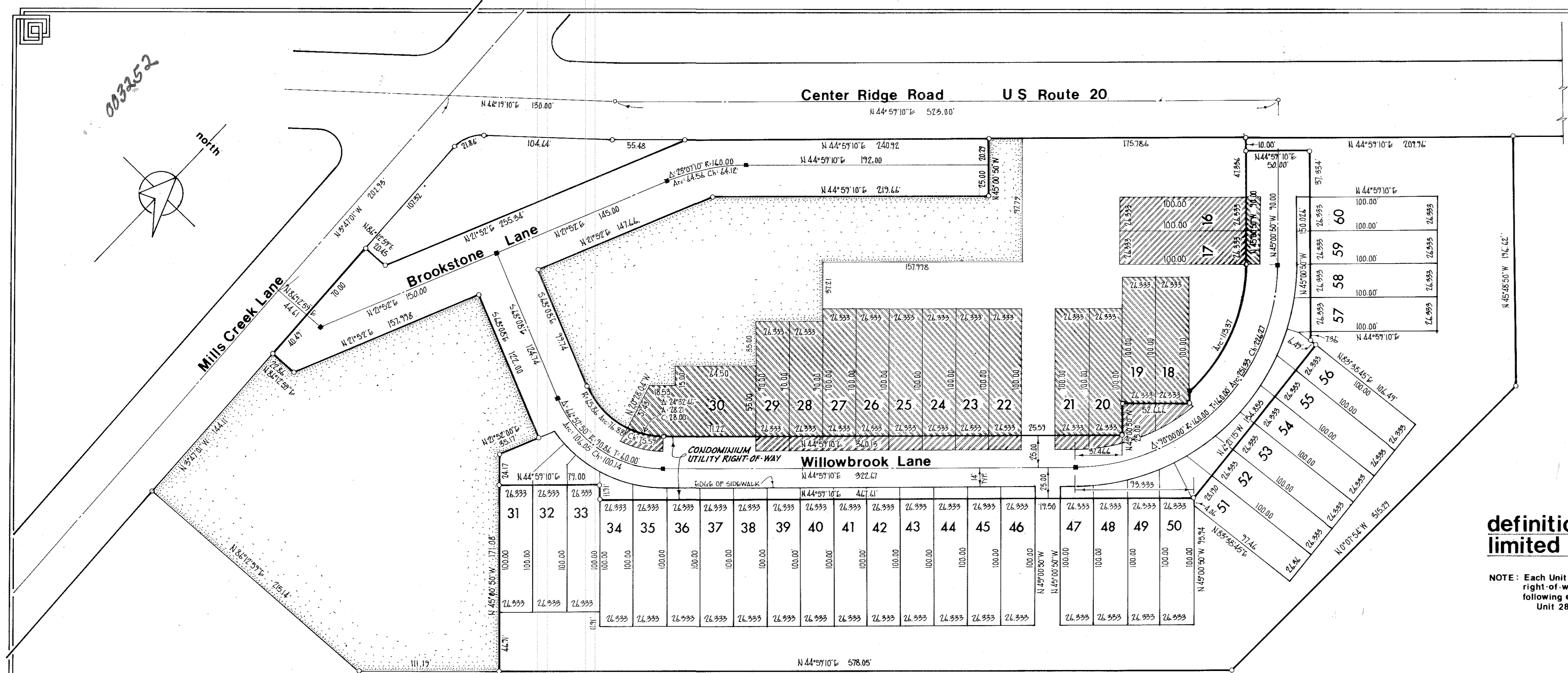


PLAT VOL. 34
PAGES 19, 20, 21 + 22

SEP 15 1978
JULIAN & FLOR
LORAIN COUNTY AUDITOR

003252

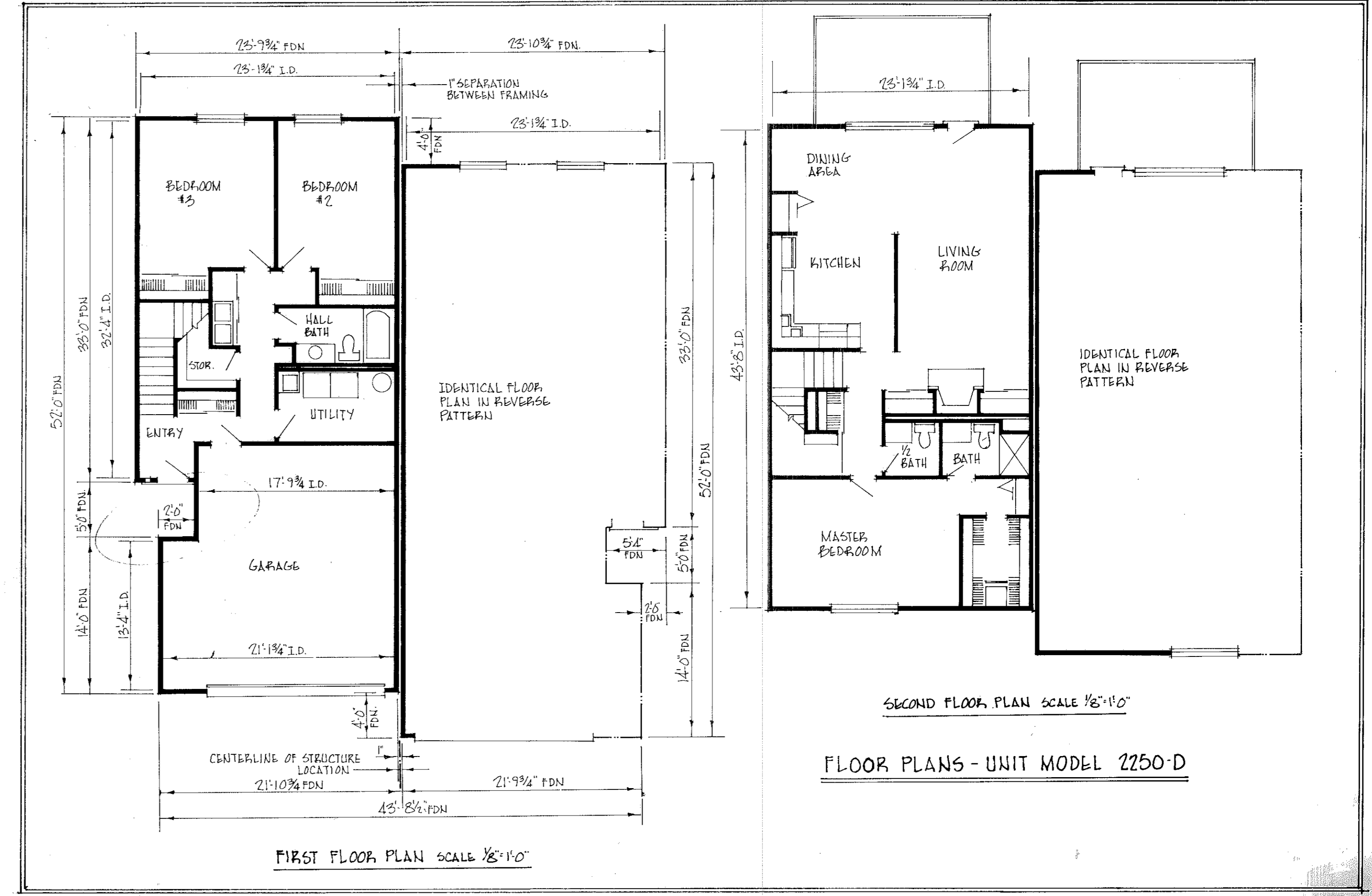
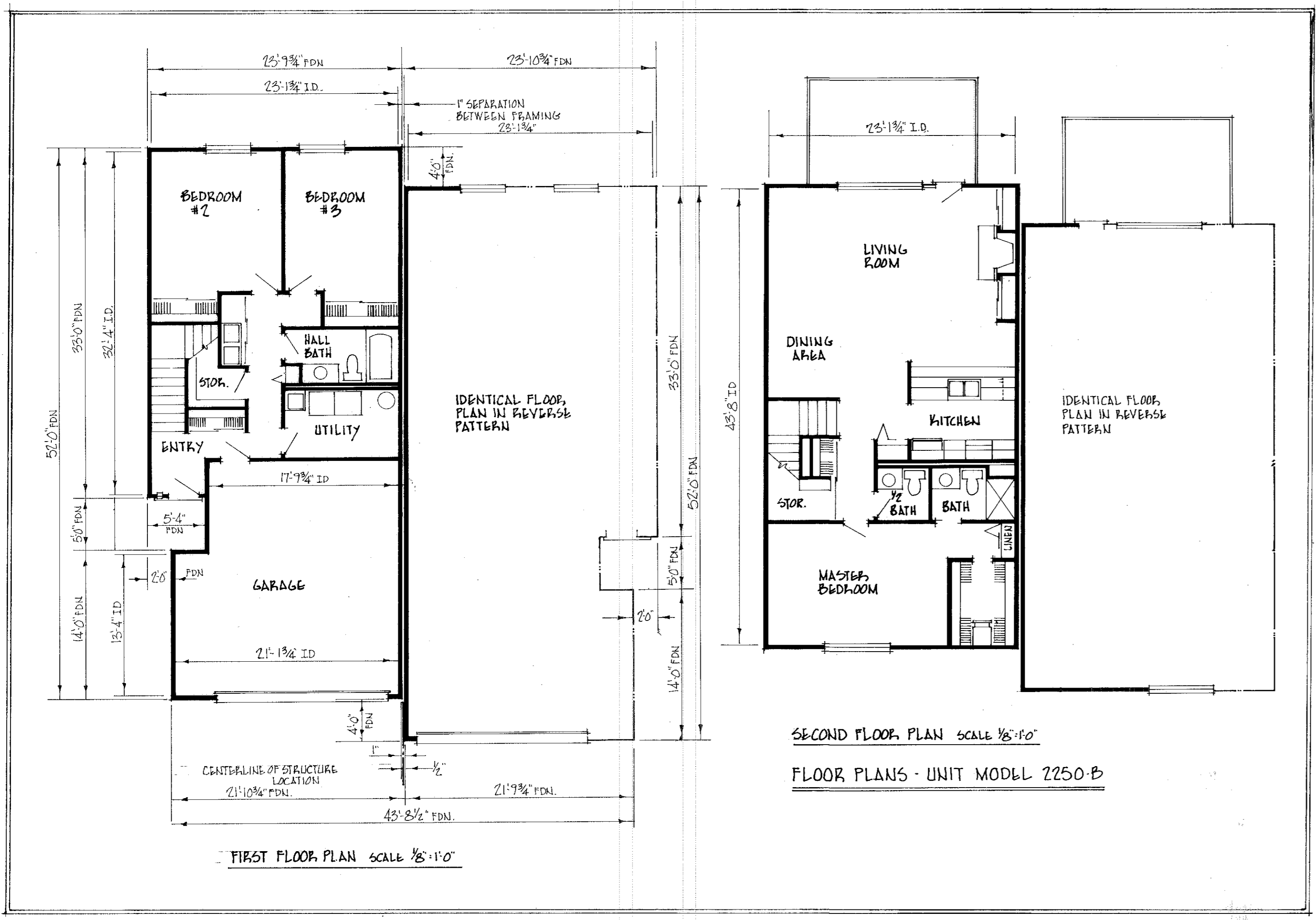
003252



definition of common and limited common areas Scale 1"=50'

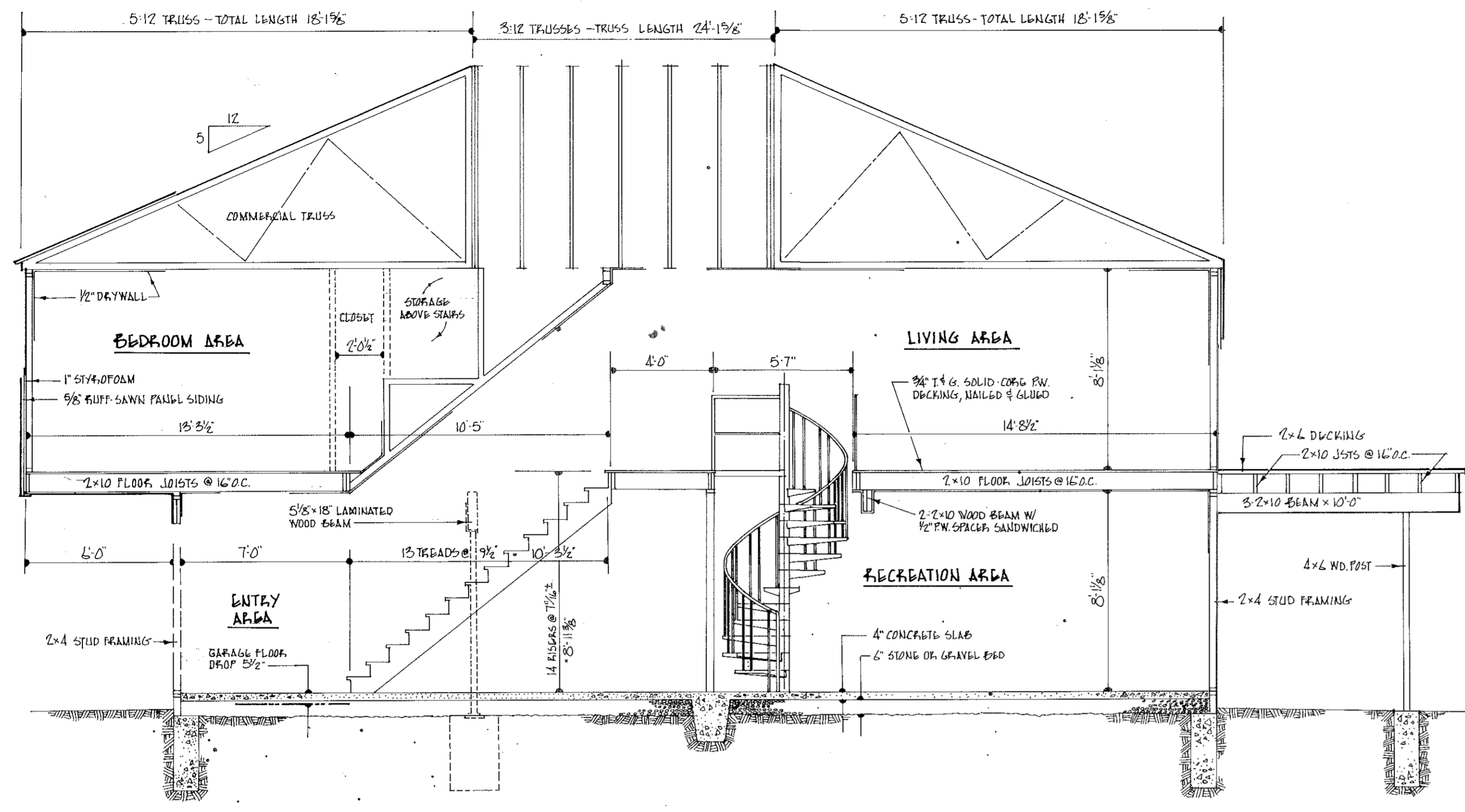
NOTE: Each Unit Limited Common Area outside of the utility (street) right of way embraces 2,633.3 square feet of area with the following exceptions:
 Unit 28 & 29; 2,370 sq. ft., Unit 30; 4,593 sq. ft.

TRANSFERRED
 IN COMPLIANCE WITH SEC. 259-212
 OHIO REV. CODE
 SEP 15 1978
 JULIANA FLJOR
 LORAIN COUNTY AUDITOR

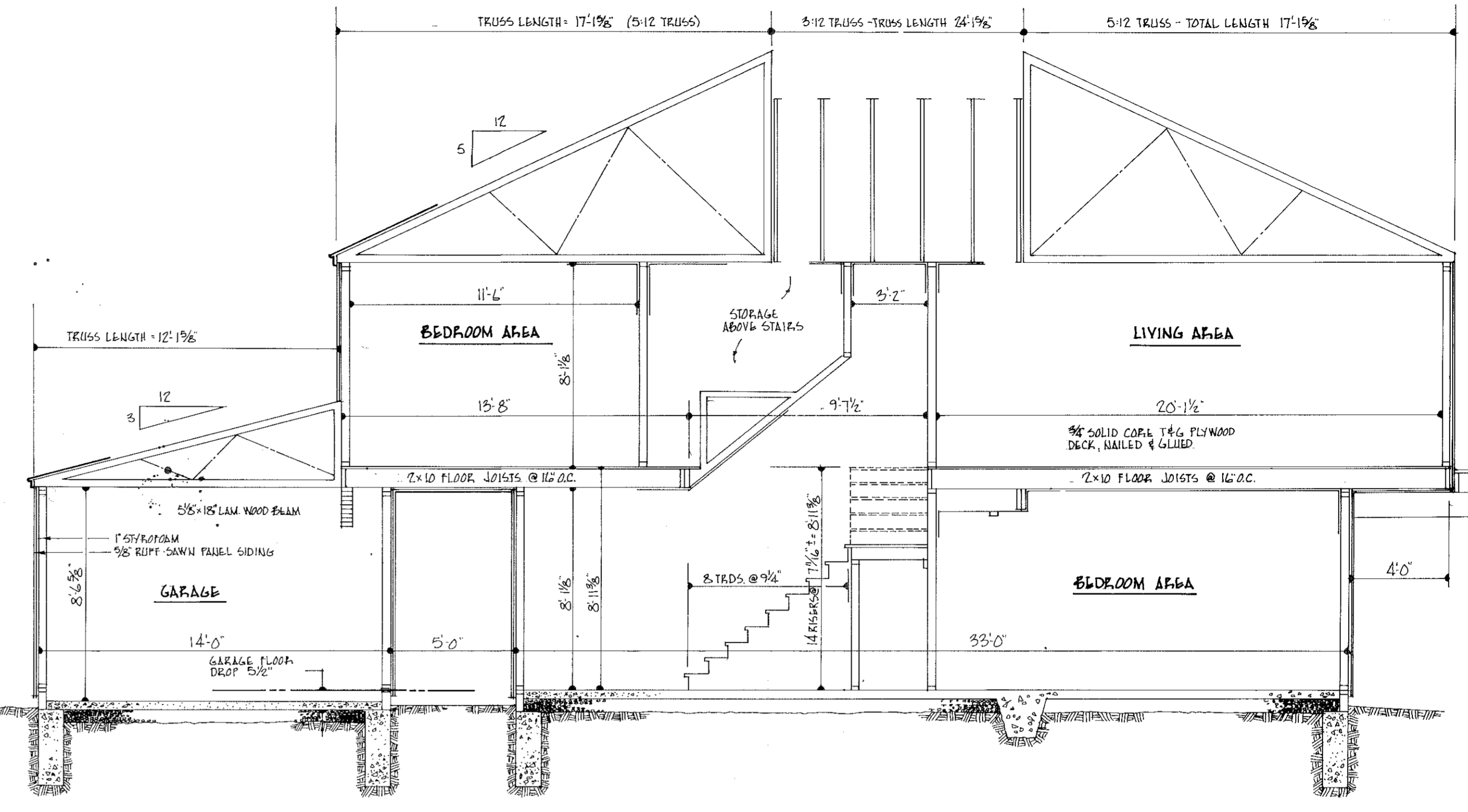


003252

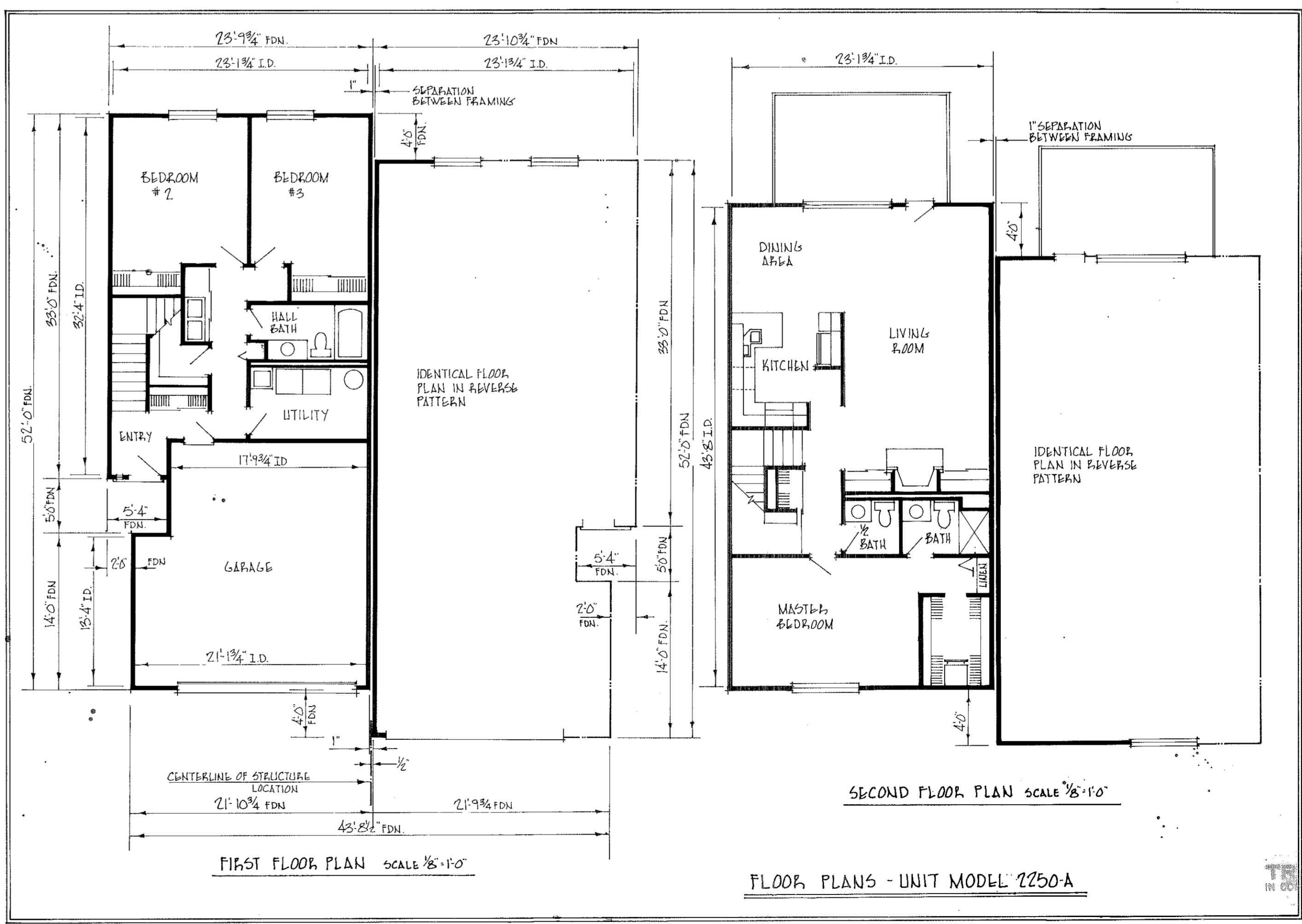
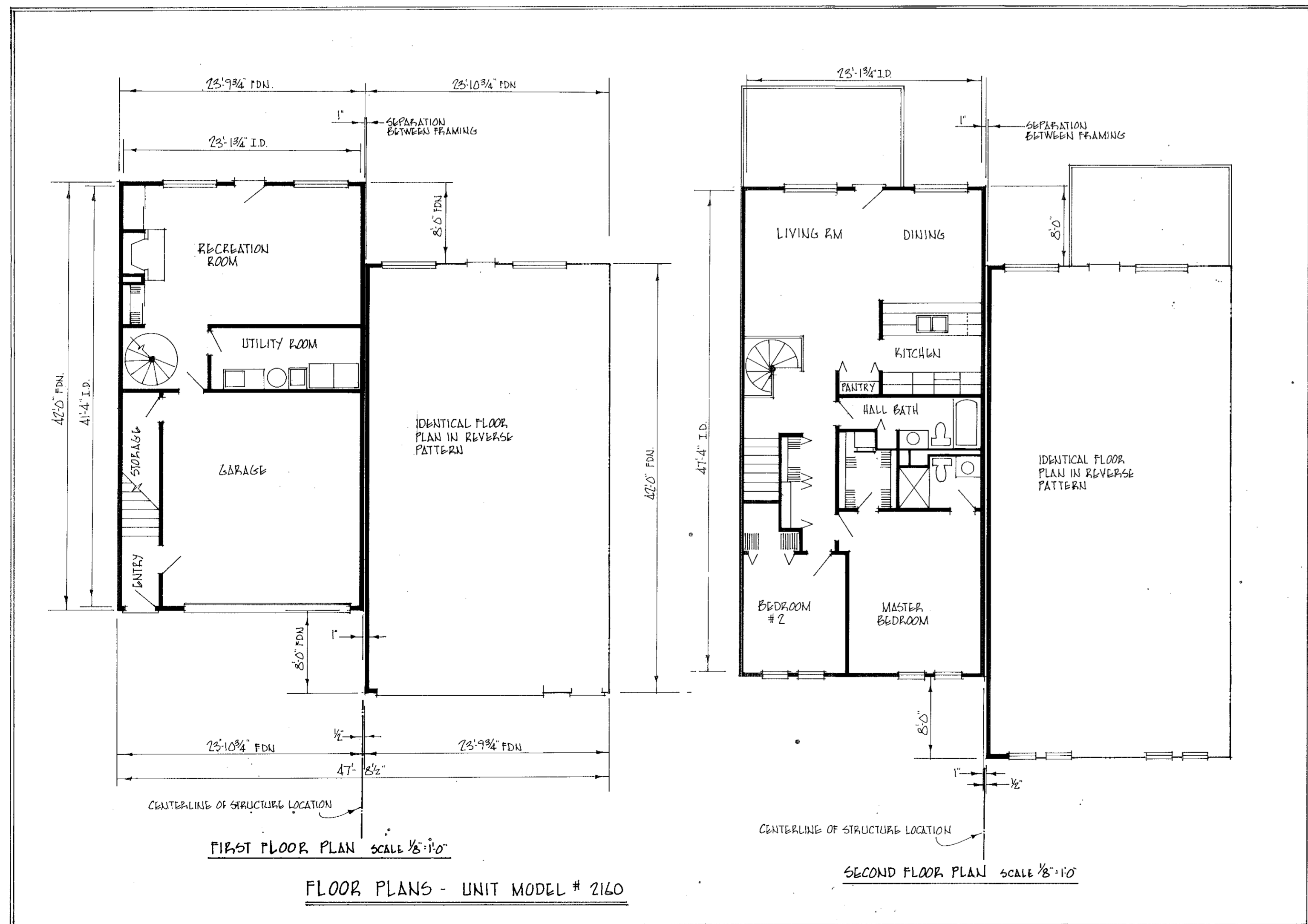
003252



SECTION THRU CONSTRUCTION - MODEL 2160 (TRUSS ARRANGEMENT VARIES W/ BUYER SELECTION) SCALE 1/4"=1'-0"



SECTION THRU CONSTRUCTION - MODEL 2250 (TRUSS ARRANGEMENT VARIES W/ BUYER SELECTION) SCALE 1/4"=1'-0"

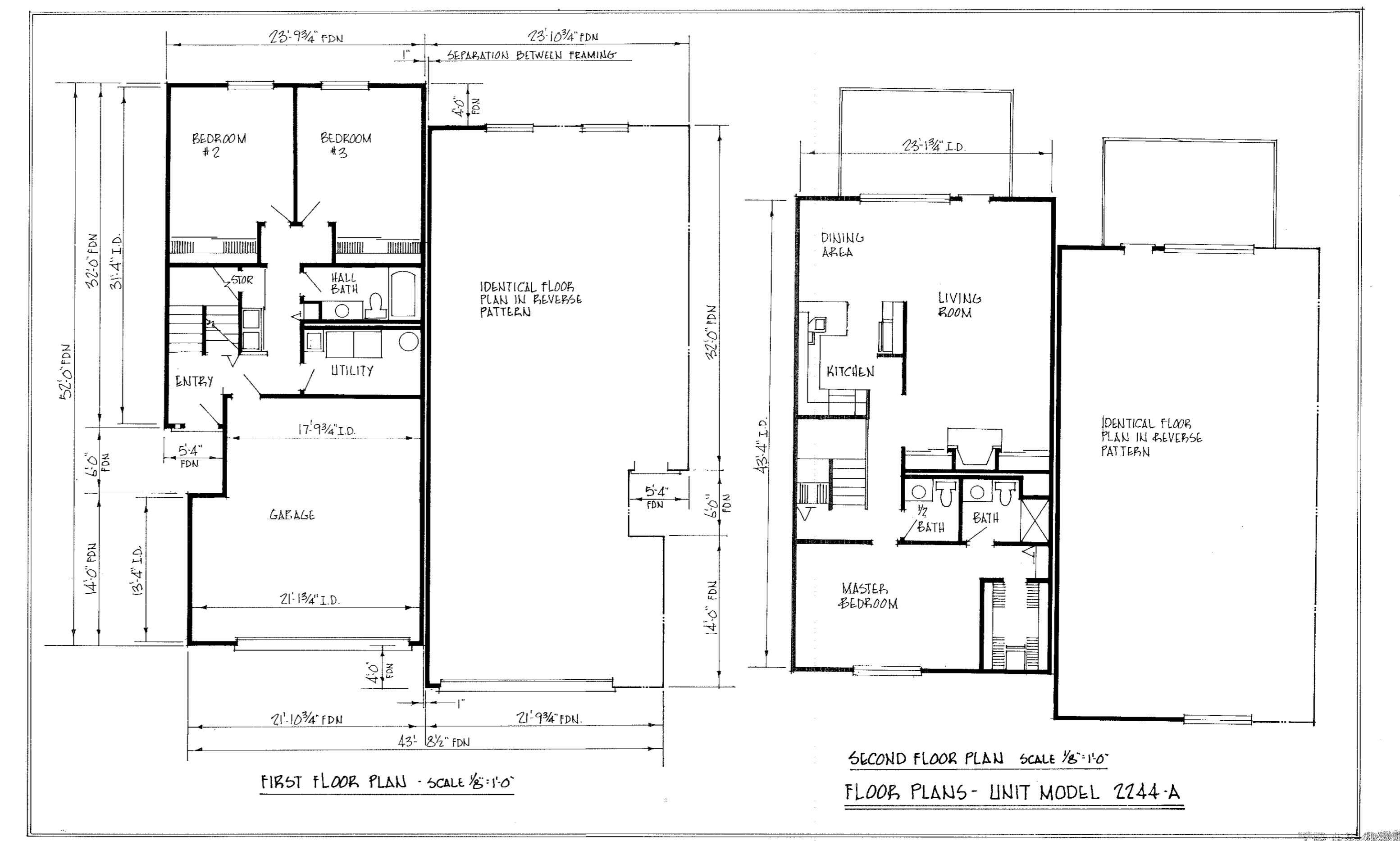
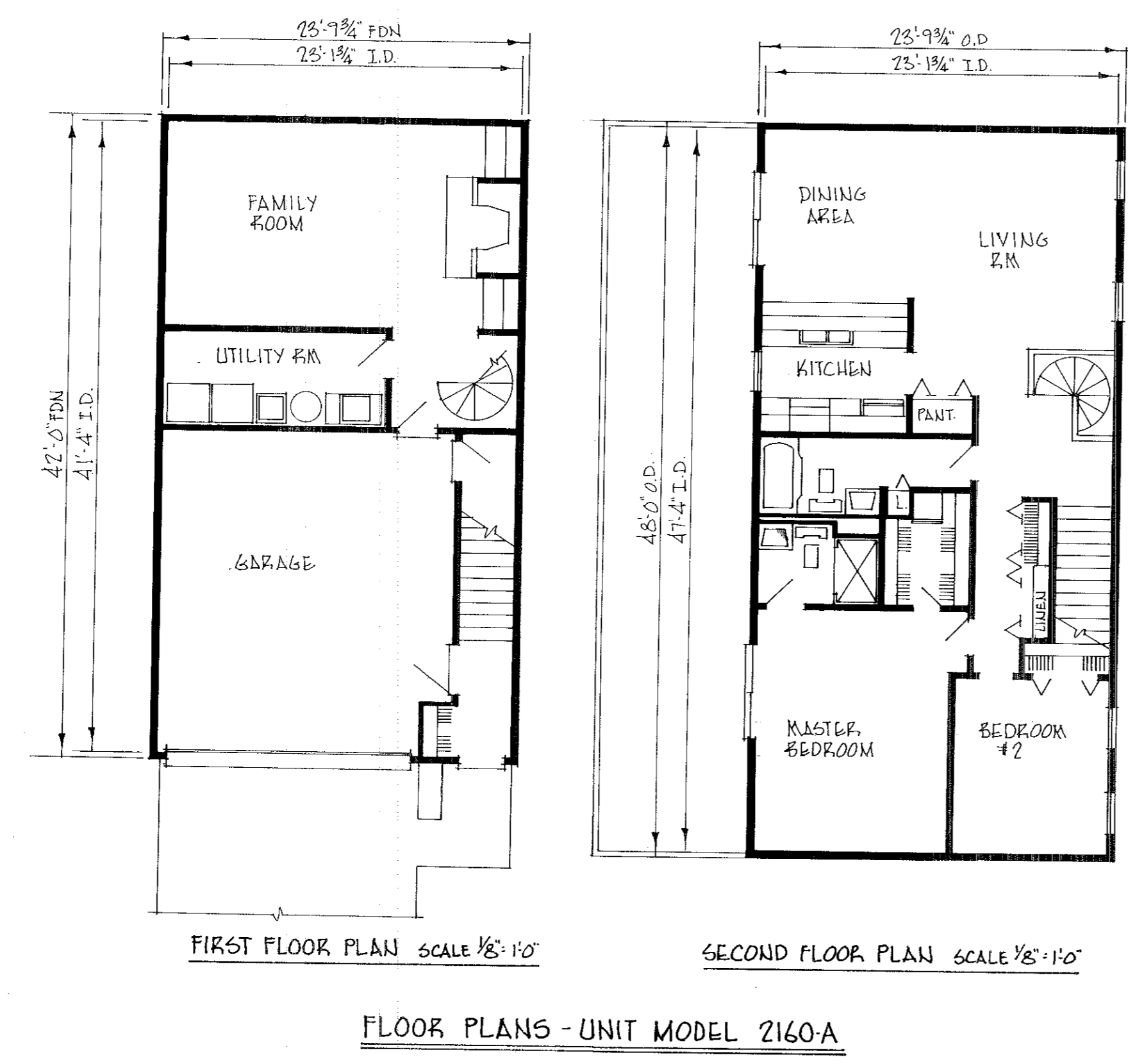
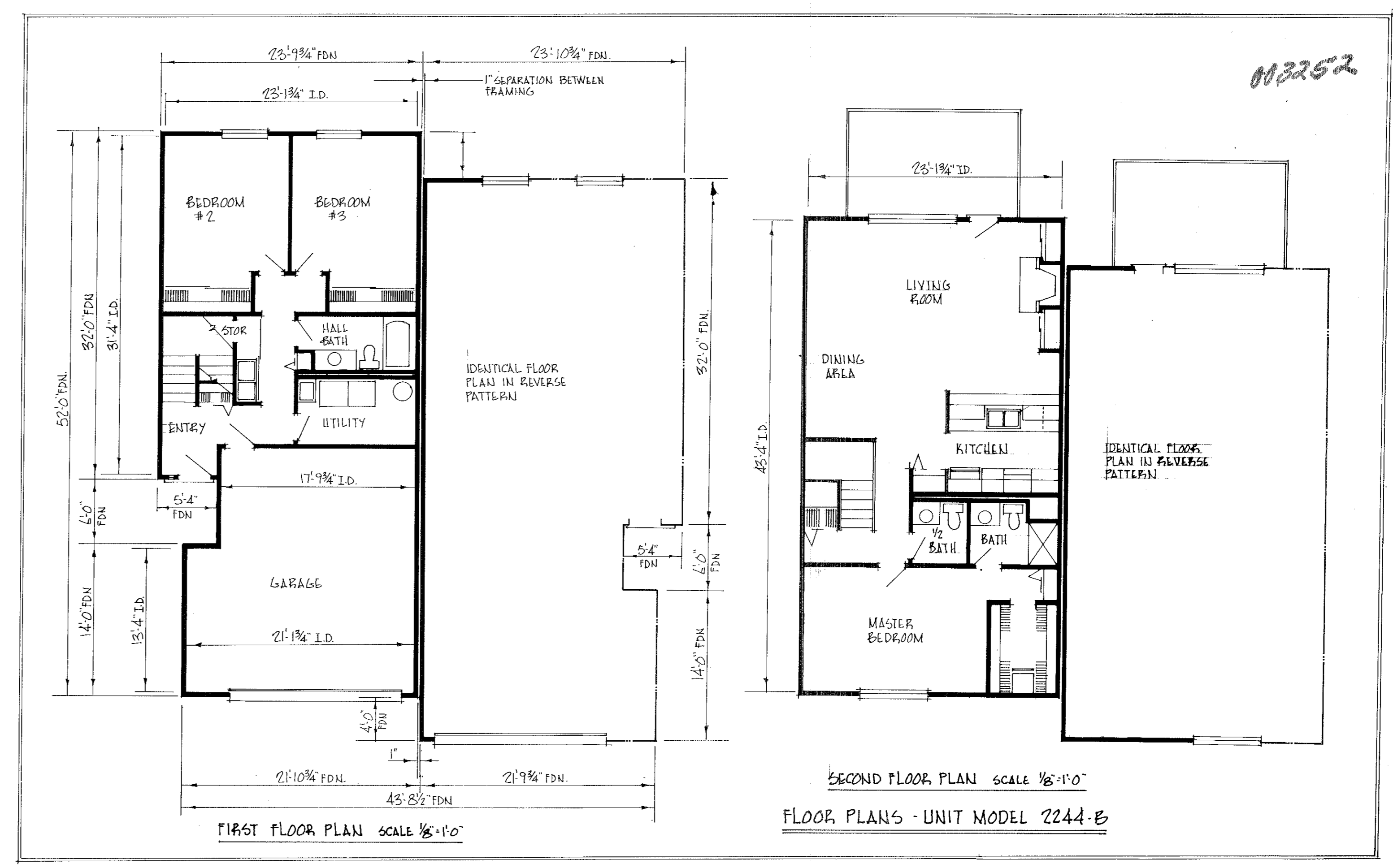
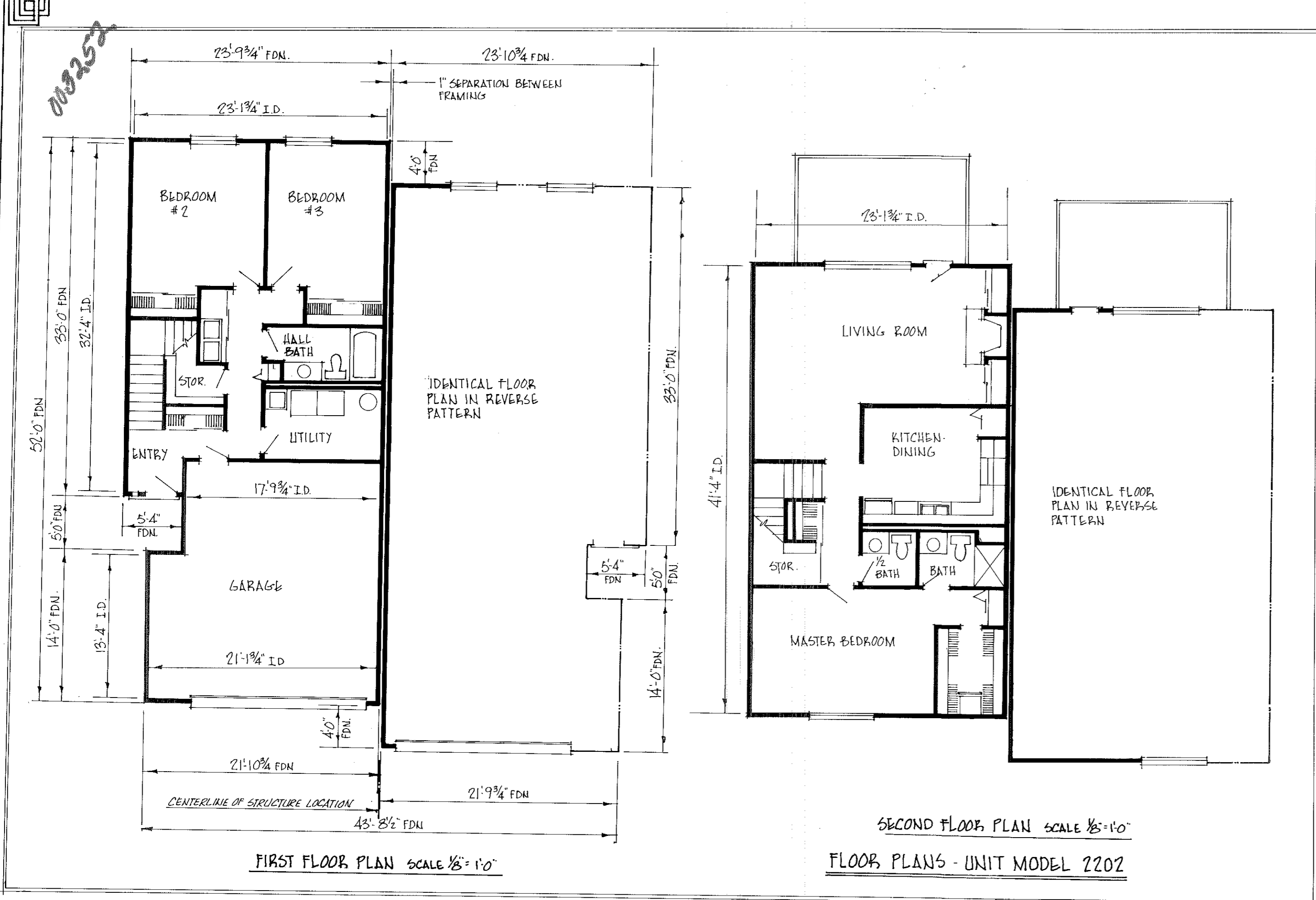


TRANSFERRED
IN COMPLIANCE WITH REG. 219-202
OHIO REV. CODE

SEP 15 1978

JULIAN A. FLOOR
LOHAIN COUNTY AUDITOR

34/21



TRANSFERRED
IN COMPLIANCE WITH SEC. 217-202
2160 REV. CODE

SEP 15 1978

JULIAN A. PHOR
LORAIN COUNTY AUDITOR