

EUGENE NEWTON DAVIS
VOL. 875 PG. 145

PAUL M. & E.G. THOMPSON
VOL. 930 PG. 981

PAUL M. & E.G. THOMPSON
VOL. 939 PG. 188

EDWARD J. & WANDA LEE GARGASZ
VOL. 1092 PG. 324

EDWARD J. & WANDA LEE GARGASZ
VOL. 1085 PG. 592

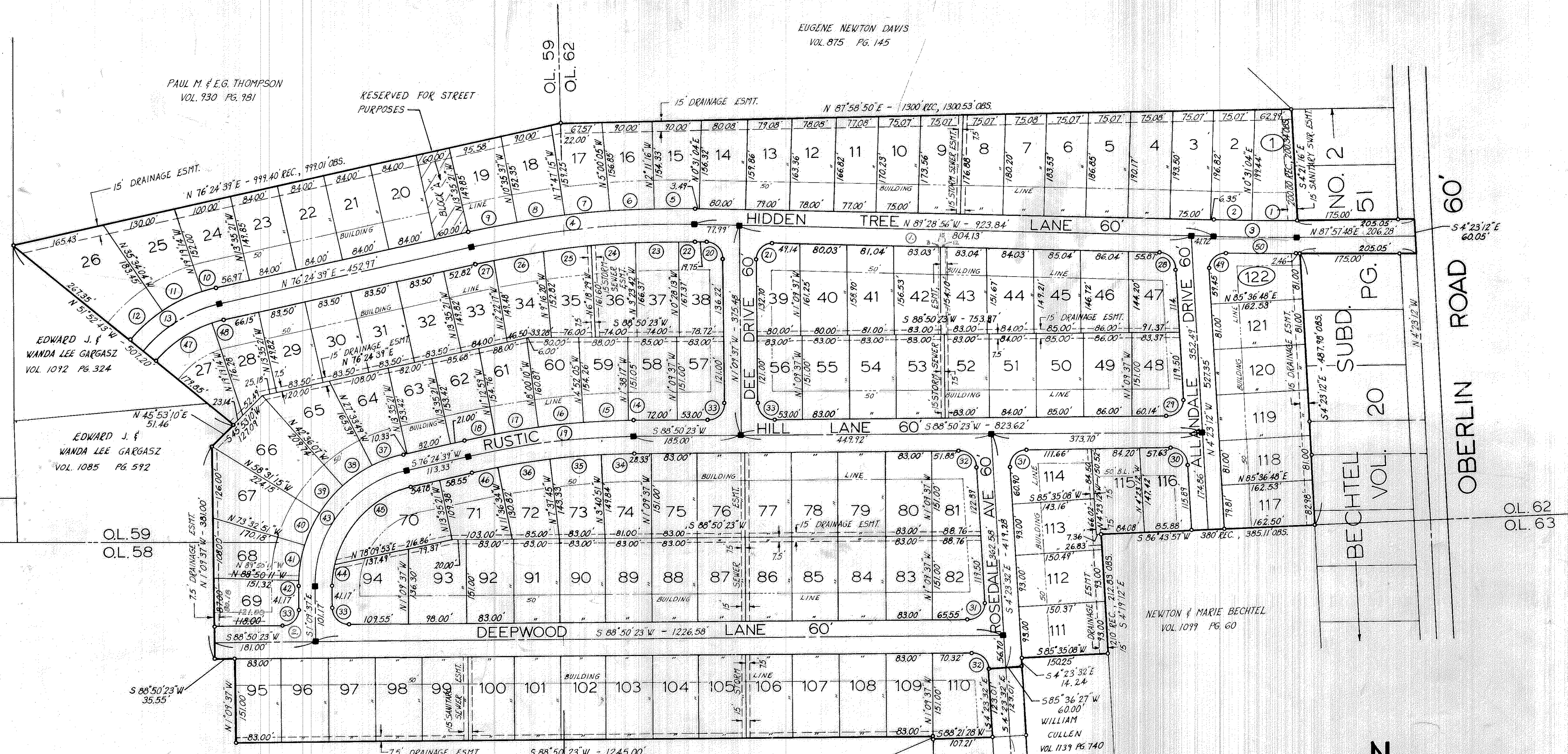
EDWARD J. & WANDA LEE GARGASZ
VOL. 1118 PG. 44

EDWARD J. & WANDA LEE GARGASZ
VOL. 1085 PG. 592

NEWTON & MARIE BECHTEL
VOL. 1099 PG. 60

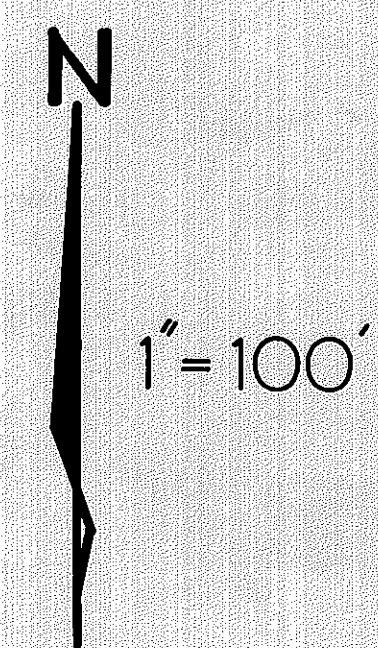
ARLINGTON ACRES SUBD. NO. 2 REVISED PG. 23 VOL. 31

HIDDEN VALLEY SUBDIVISION NO. 1



① CORRECTION NO. 1, DENOTED IN RED INK, IS PER CERTIFICATE OF CORRECTION NO. 937140, DATED FEB. 3, 1977, AND FILED IN THE OFFICE OF THE LORAIN COUNTY RECORDER. PLAT CORRECTION DONE 1-15-82 T.M.

② CORRECTION NO. 2, DENOTED IN RED INK, IS PER CERTIFICATE OF CORRECTION NO. 955256, DATED JULY 19, 1977, AND FILED IN THE OFFICE OF THE LORAIN COUNTY RECORDER. PLAT CORRECTION DONE 1-15-82 T.M.



MARK	RADIUS	DELTA	TAN	ARC	CHORD
1	3334.03	1°22'29"	40.00	80.00	77.99
2	3334.03	1°10'41"	34.33	68.65	68.65
3	3364.03	2°33'16"	75.00	149.98	149.97
4	1646.55	14°06'25"	203.73	405.40	404.38
5	1676.55	2°42'20"	39.59	79.17	79.16
6	1676.55	2°48'49"	41.17	82.33	82.31
7	1676.55	2°41'10"	40.77	81.53	81.52
8	1676.55	2°48'22"	41.06	82.11	82.10
9	1676.55	2°59'44"	43.84	87.65	87.64
10	278.88	5°43'53"	13.96	27.90	27.88
11	278.88	16°14'50"	31.81	79.08	78.82
12	278.88	16°18'39"	31.77	79.39	79.12
13	248.88	38°17'22"	86.40	166.32	163.24
14	1407.54	0°28'40"	5.87	11.74	11.74
15	1407.54	3°13'48"	31.68	79.35	79.34
16	1407.54	3°08'05"	30.51	71.01	71.00
17	1407.54	3°12'49"	31.48	78.95	78.94
18	1407.54	2°22'22"	29.15	58.29	58.29

MARK	RADIUS	DELTA	TAN	ARC	CHORD
19	1377.54	12°25'44"	150.00	298.82	298.24
20	30.00	88°19'19"	29.13	46.25	41.80
21	30.00	91°40'41"	30.89	48.00	43.04
22	1616.55	0°59'17"	13.94	27.88	27.88
23	1616.55	2°55'29"	41.27	82.52	82.51
24	1616.55	2°54'41"	41.10	82.19	82.18
25	1616.55	2°57'51"	41.83	83.63	83.62
26	1616.55	3°05'57"	43.73	87.44	87.43
27	1616.55	1°13'04"	17.18	34.36	34.36
28	30.00	65°05'44"	27.54	44.56	40.57
29	30.00	93°13'35"	31.74	48.81	43.60
30	30.00	86°46'25"	28.37	45.43	41.22
31	30.00	93°13'55"	31.74	48.82	43.61
32	30.00	86°46'05"	28.35	45.43	41.21
33	30.00	90°00'00"	30.00	41.12	42.43
34	1347.54	2°31'14"	29.65	59.28	59.27
35	1347.54	3°56'54"	46.45	92.86	92.84
36	1347.54	3°58'49"	46.82	93.61	93.59

MARK	RADIUS	DELTA	TAN	ARC	CHORD
37	239.06	13°58'28"	29.30	58.31	58.16
38	239.06	15°02'18"	31.55	62.75	62.57
39	239.06	15°55'08"	33.42	66.42	66.21
40	239.06	15°01'36"	31.53	62.70	62.52
41	239.06	16°17'20"	34.21	67.96	67.74
42	239.06	2°19'26"	4.85	9.70	9.70
43	209.06	77°34'16"	168.00	283.04	261.91
44	179.06	12°47'57"	20.08	40.00	39.92
45	179.06	64°46'19"	113.57	202.42	191.82
46	1347.54	1°58'47"	23.28	46.56	46.56
47	218.88	32°33'29"	63.92	124.38	122.71
48	218.88	5°43'53"	10.96	21.89	21.88
49	29.45	94°31'12"	31.87	48.58	43.26
50	3394.03	2°10'12"	64.28	128.54	128.54
42	239.06	1°19'26"	2.76	5.52	5.52