

# CENTERLINE SURVEY PLAT

## BEECH, WEST RIVER, SECOND, & THIRD STREETS

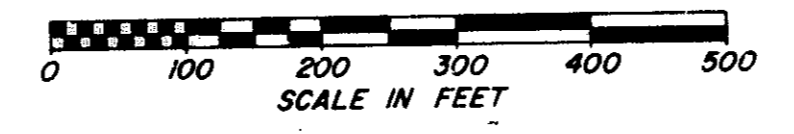
### LORAIN CO., CITY OF ELYRIA, ELYRIA TWP., R-17-W, T-6-N

#### WEST OF THE RIVER

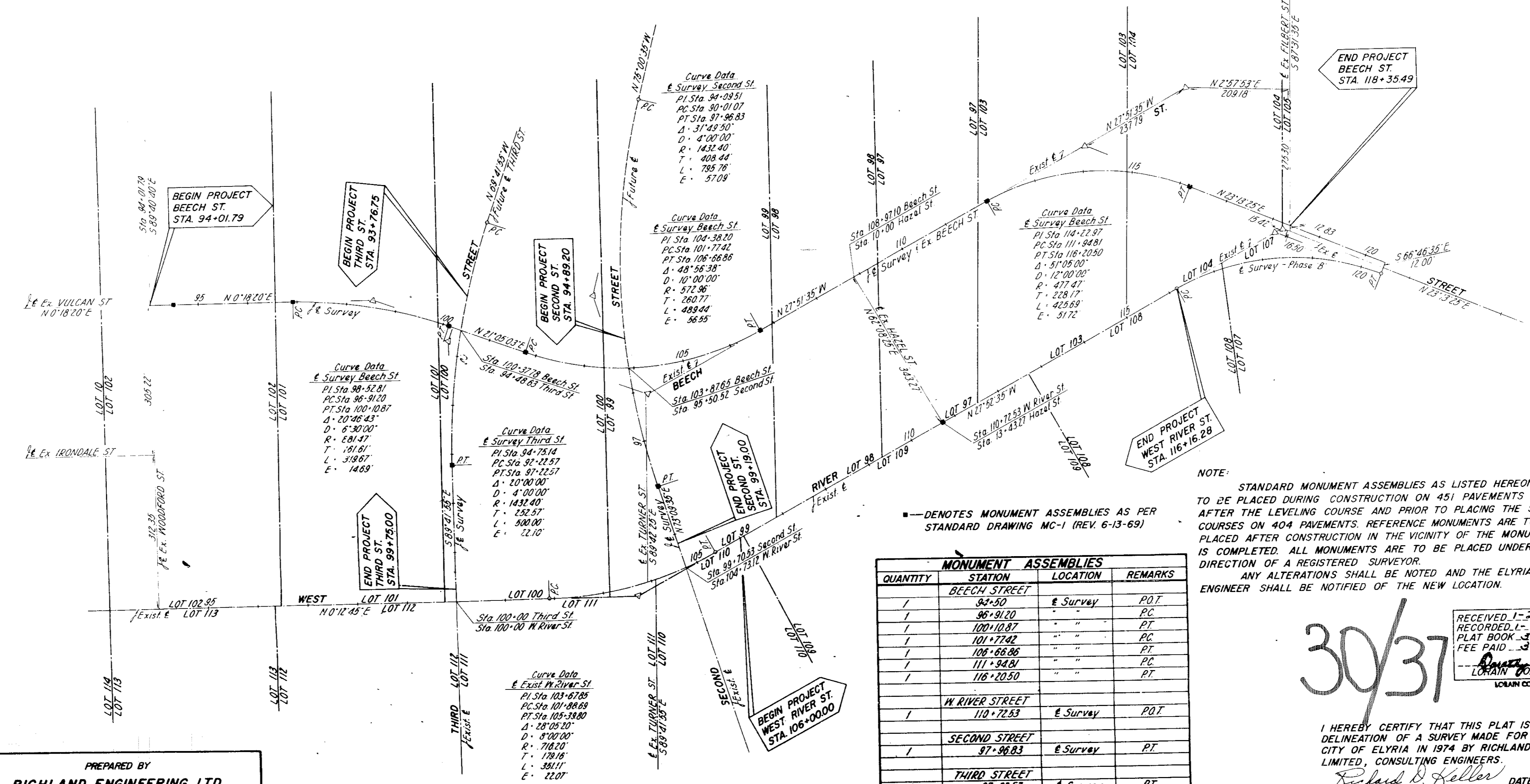
874792  
874792

STATE JOB NUMBER	5	OHIO	80
			83

LORAIN COUNTY  
CITY OF ELYRIA  
WEST RIVER PKWY. PHASE 'C'  
R/W PLANS



SIGNED Robert P. Surra  
DATE 11-20-74 ELYRIA CITY ENGINEER



NOTE: STANDARD MONUMENT ASSEMBLIES AS LISTED HEREON ARE TO BE PLACED DURING CONSTRUCTION ON 451 PAVEMENTS AND AFTER THE LEVELING COURSE AND PRIOR TO PLACING THE SURFACE COURSES ON 404 PAVEMENTS. REFERENCE MONUMENTS ARE TO BE PLACED AFTER CONSTRUCTION IN THE VICINITY OF THE MONUMENTS IS COMPLETED. ALL MONUMENTS ARE TO BE PLACED UNDER THE DIRECTION OF A REGISTERED SURVEYOR. ANY ALTERATIONS SHALL BE NOTED AND THE ELYRIA CITY ENGINEER SHALL BE NOTIFIED OF THE NEW LOCATION.

MONUMENT ASSEMBLIES			
QUANTITY	STATION	LOCATION	REMARKS
1	88+50	E Survey	P.O.T.
1	88+81.00	"	PC
1	100+10.87	"	PT
1	101+77.42	"	PC
1	108+66.86	"	PT
1	111+94.81	"	PC
1	116+20.50	"	PT
1	110+72.83	E Survey	P.O.T.
1	97+96.83	E Survey	PT
1	97+22.57	E Survey	PT
10	TOTAL		

30/37

RECEIVED 1-27-1975
RECORDED 1-27-1975
PLAT BOOK 30 PAGE 37-38
FEE PAID 34.50

LORAIN COUNTY RECORDER

PREPARED BY  
**RICHLAND ENGINEERING LTD.**  
CONSULTING ENGINEERS  
MANSFIELD, OHIO

I HEREBY CERTIFY THAT THIS PLAT IS A TRUE DELINEATION OF A SURVEY MADE FOR THE CITY OF ELYRIA IN 1974 BY RICHLAND ENGINEERING LIMITED, CONSULTING ENGINEERS.  
Richard D. Keller DATE 6/21/74  
RICHARD D. KELLER REG. SURVEYOR NO. 5648

CENTERLINE SURVEY PLAT

