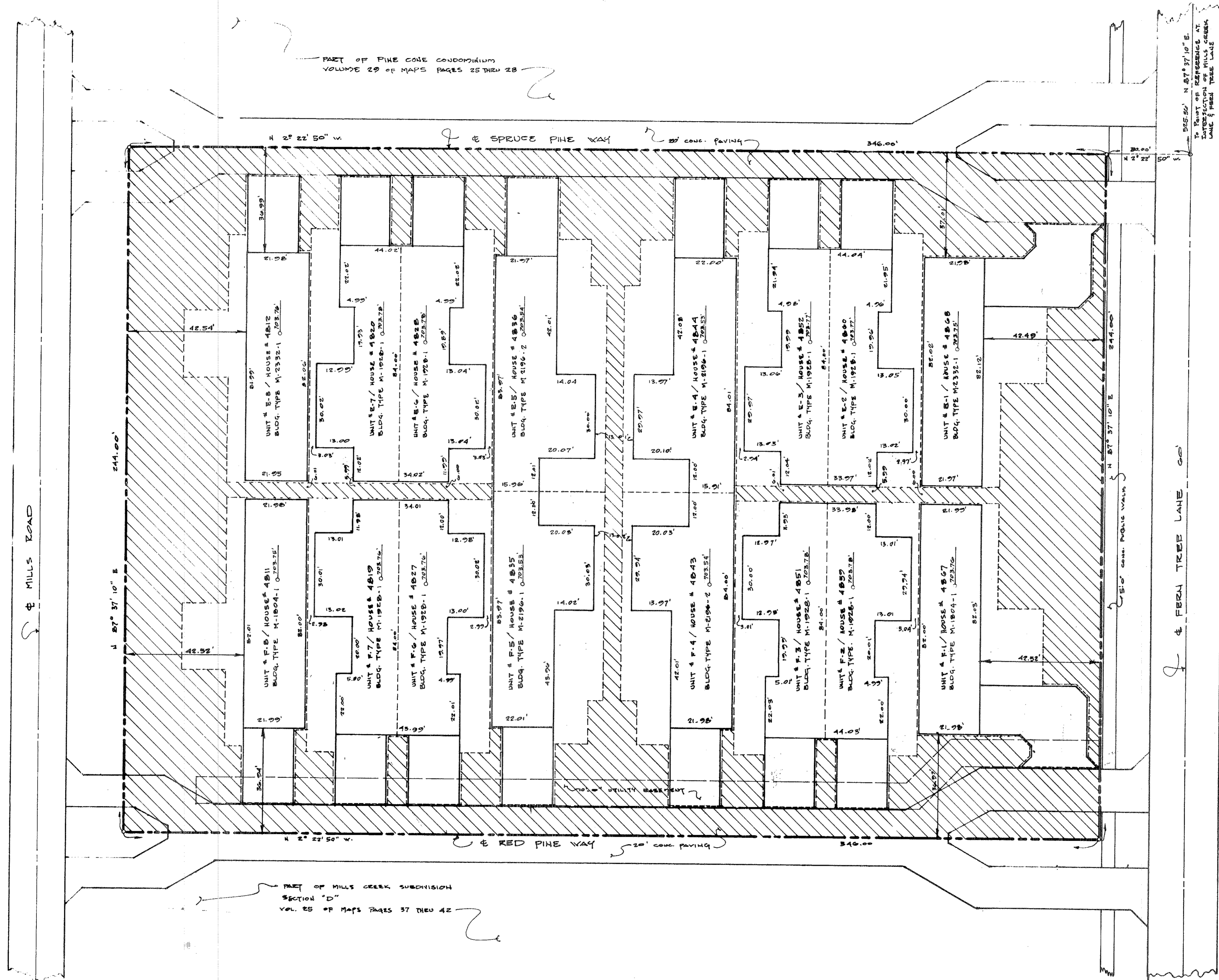


29/53

EXHIBIT "A"
 DRAWINGS FOR YOUNG FOREST CONDOMINIUMS
 OF
 MILLS CREEK SUBDIVISION SECTION "D"
 VOL. 25 OF MAPS PAGES 37 THRU 42
 SCALE 1" = 20'-0" APRIL 1974

854125



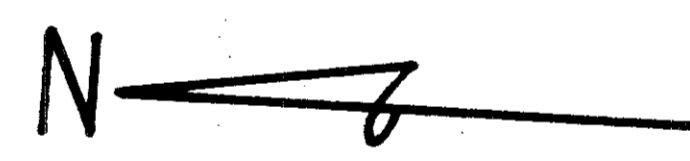
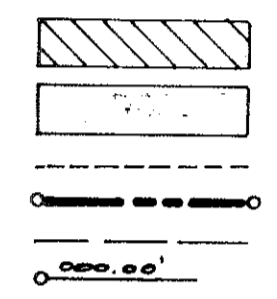
WE, PRESTON R. SPENCER, REGISTERED SURVEYOR OHIO 6047 AND EDWARD A. SCHMITT REGISTERED ARCHITECT OHIO 4404 HEREBY CERTIFY THAT THE WITH-IN DRAWINGS FOR YOUNG FOREST CONDOMINIUMS AMENDMENT CONSISTING OF PAGES 1/4 THRU 4/4 ACCURATELY SHOW THE BUILDINGS AS CONSTRUCTED



Edward A. Schmitt

LEGEND

- C.A. - COMMON AREAS AND FACILITIES
- L.C.A. - LIMITED COMMON AREAS & FACILITIES
- L.C.B. - BOUNDARY LINE
- PROPERTY LINE
- UTILITY EASEMENT
- FINISH FLOOR ELEVATION



PART OF MILLS CREEK SUBDIVISION, SECTION "D" VOL. 25 OF MAPS PAGES 37 THRU 42

TRANSFERRED IN COMPLIANCE WITH SEC. 313.07 OHIO REV. CODE

APR 25 1974

ALAN BLANCHARD LORAIN COUNTY RECORDER

RECEIVED FOR RECORD AT 2:15 P.M.

APR 25 1974

RECORDED IN LORAIN COUNTY RECORDS PLAT Vol. 29 Page 53-56

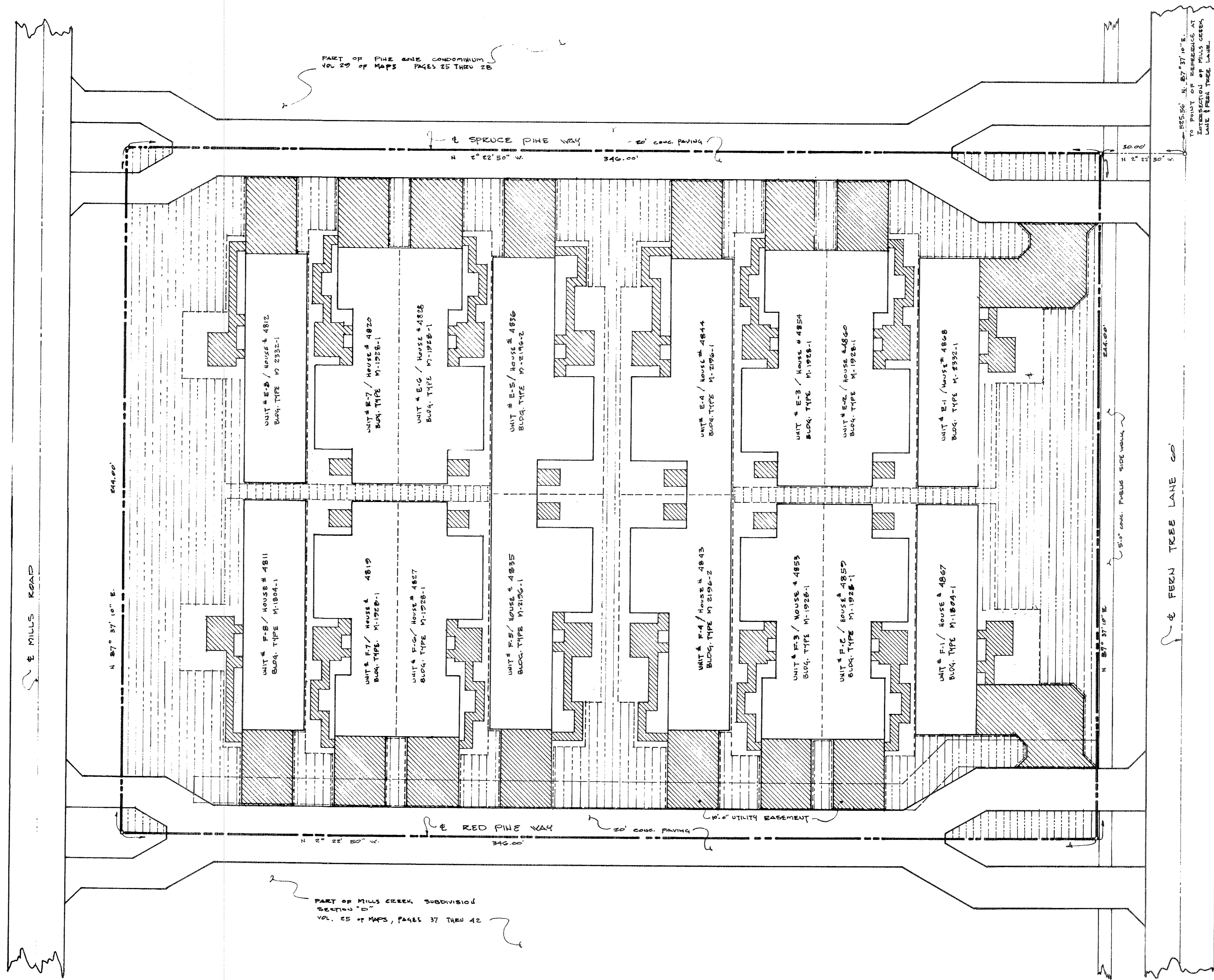
DOROTHY L. ESSEX LORAIN COUNTY RECORDER

6912
Lawyer Title Co.

1/4

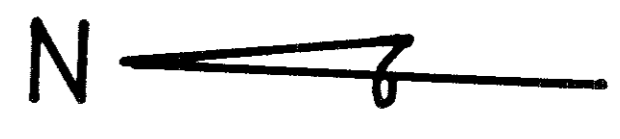
29/53

EXHIBIT "A"
 DRAWINGS FOR YOUNG FOREST CONDOMINIUM
 OF
 MILLS CREEK SUBDIVISION SECTION "D"
 VOL. 25 OF MAPS, PAGES 37 THRU 42
 SAME 1" = 20' 0" APRIL 1974



LEGEND

- L.C.A. BOUNDARY
- - - - - PROPERTY LINE
- UTILITY EASEMENT
- ▨ CONCRETE WALKS, DRIVES, & PATIOS
- ▤ INFORMAL PLANTING AREAS
- PATIO COURTYARD AREAS



PART OF MILLS CREEK SUBDIVISION
 SECTION "D"
 VOL. 25 OF MAPS, PAGES 37 THRU 42

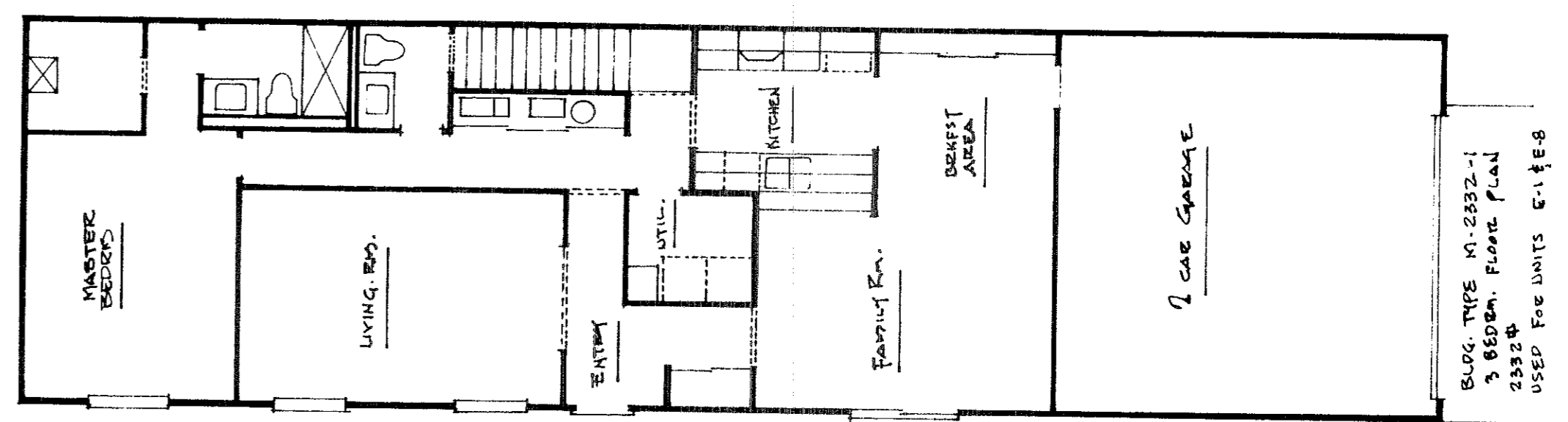
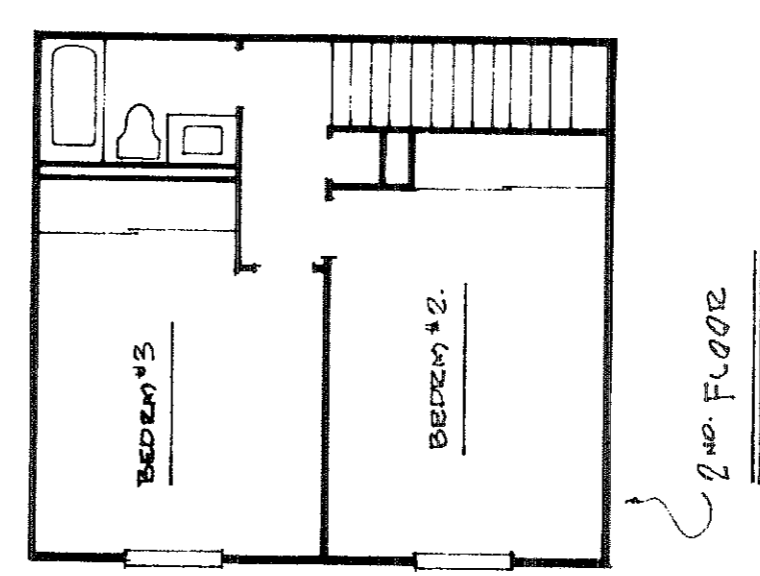
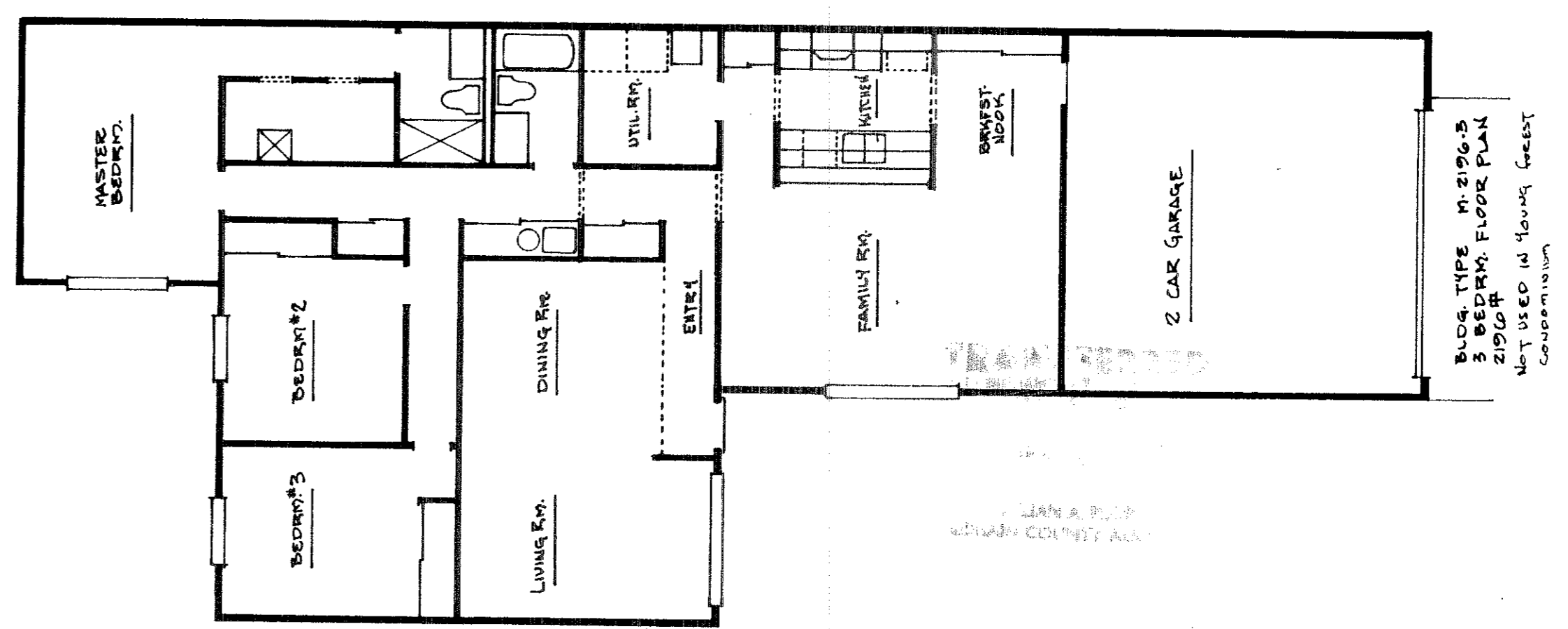
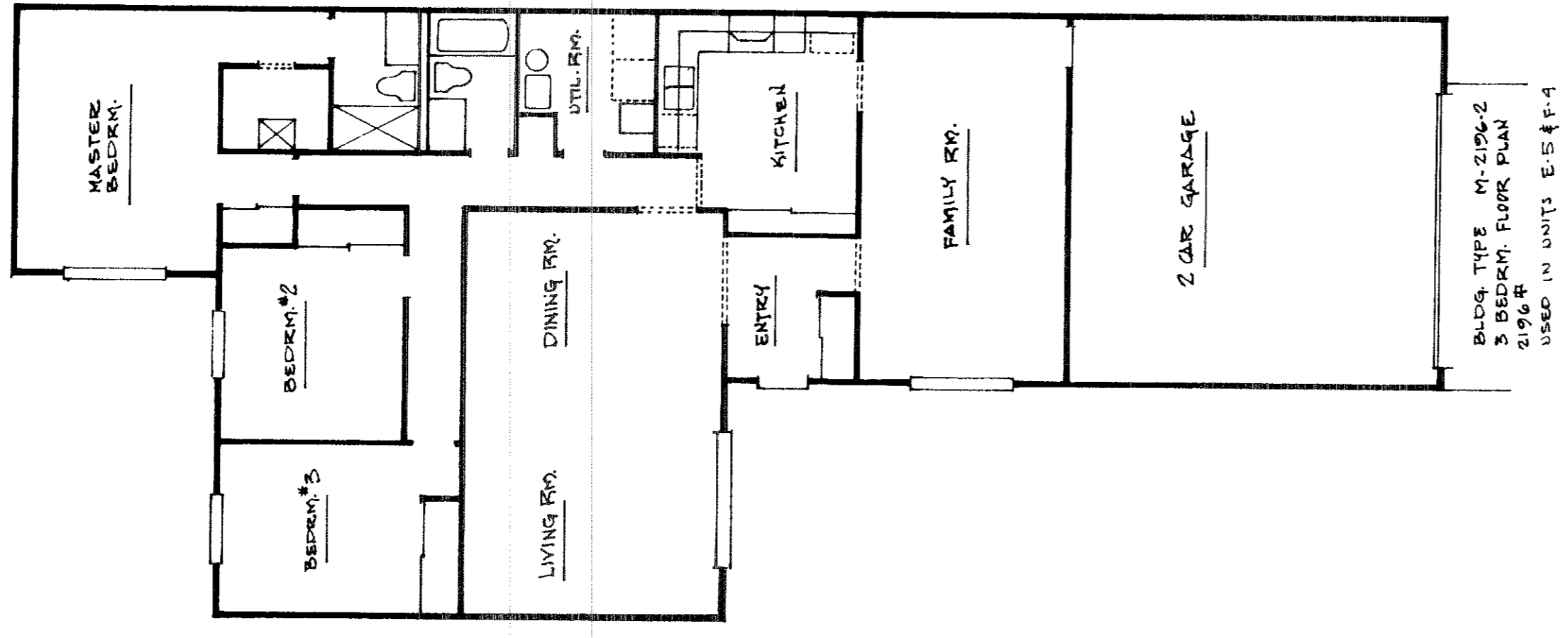
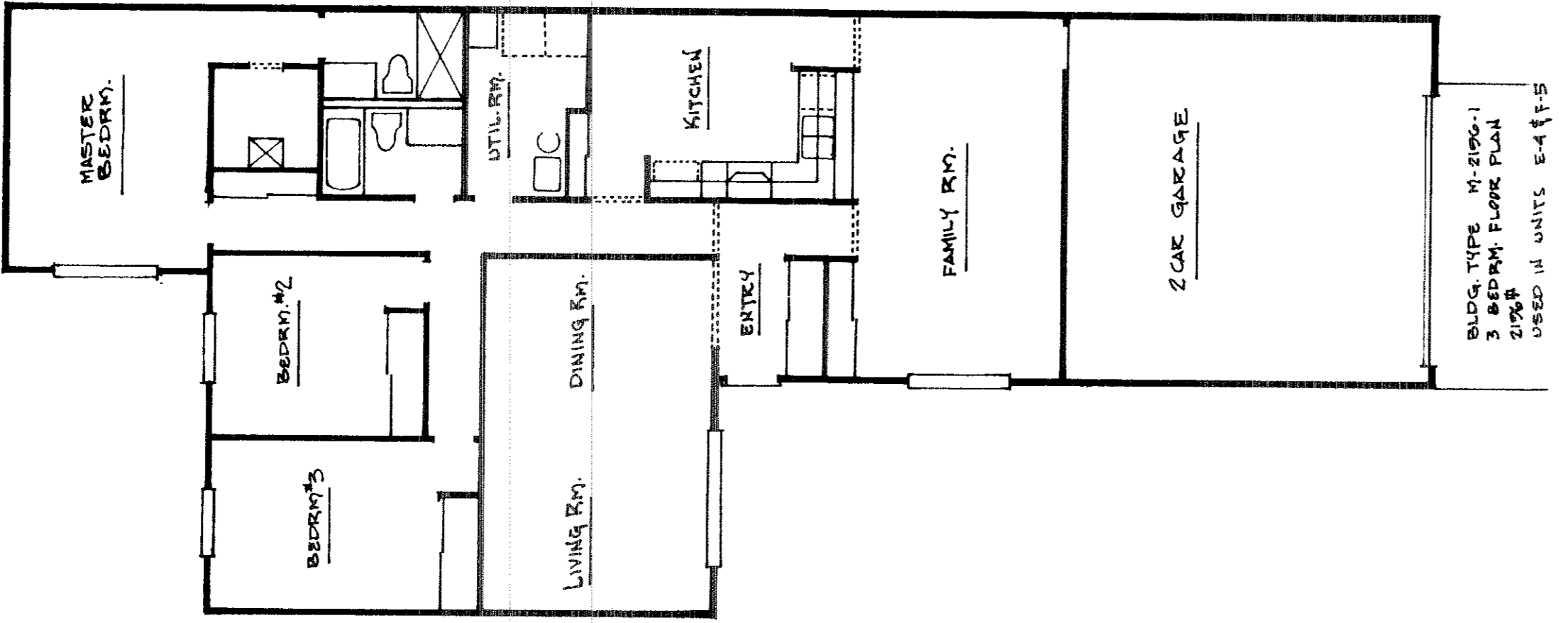
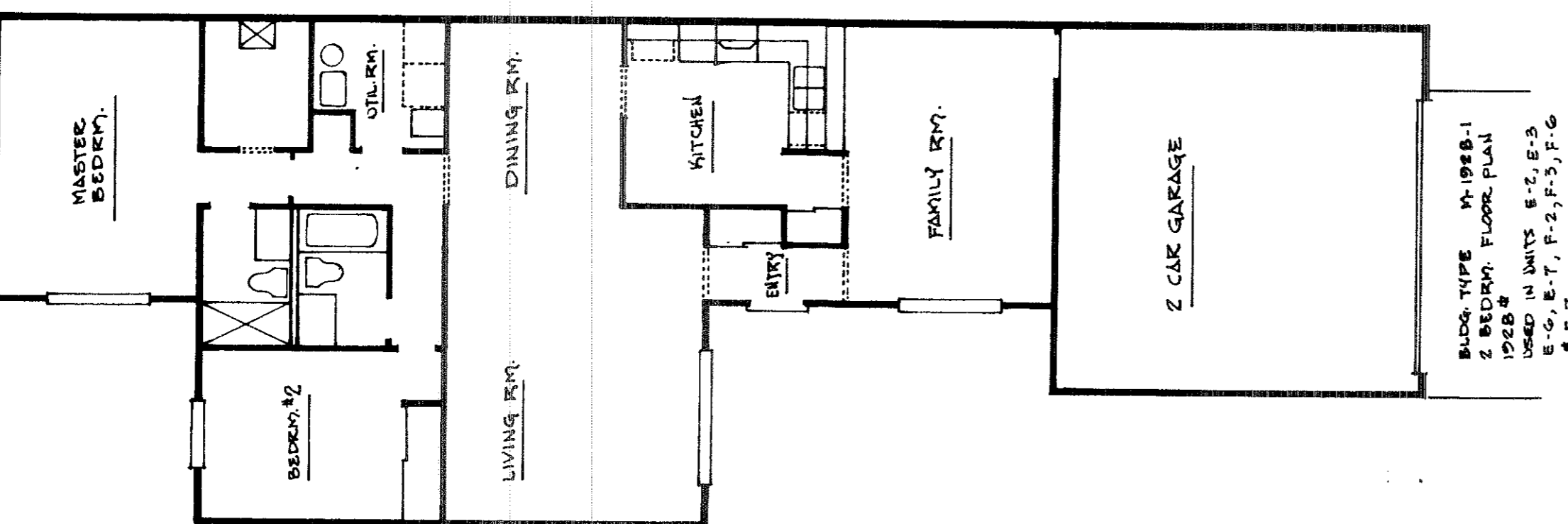
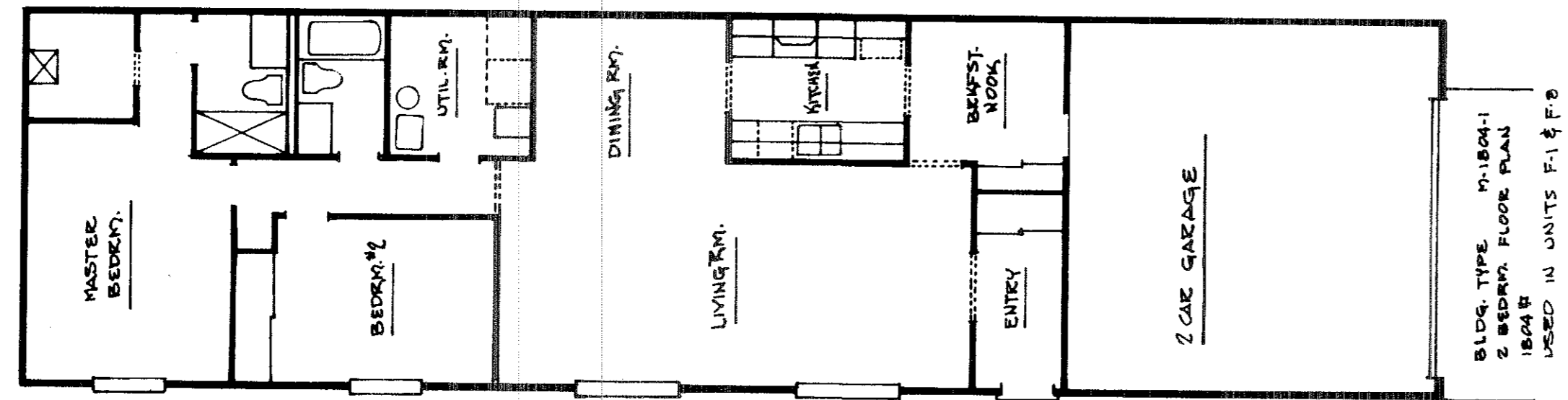
TRANSFERRED
 IN COMPLIANCE WITH SEC. 319.202
 OHIO REV. CODE

APR 25 1974

JULIAN A. FUOR
 LOBAIN COUNTY AUDITOR

EXHIBIT "A"
YOUNG FOREST CONDOMINIUMS
FLOOR PLANS

SCALE 1/8" = 1'-0"
APRIL, 1974



1st Floor

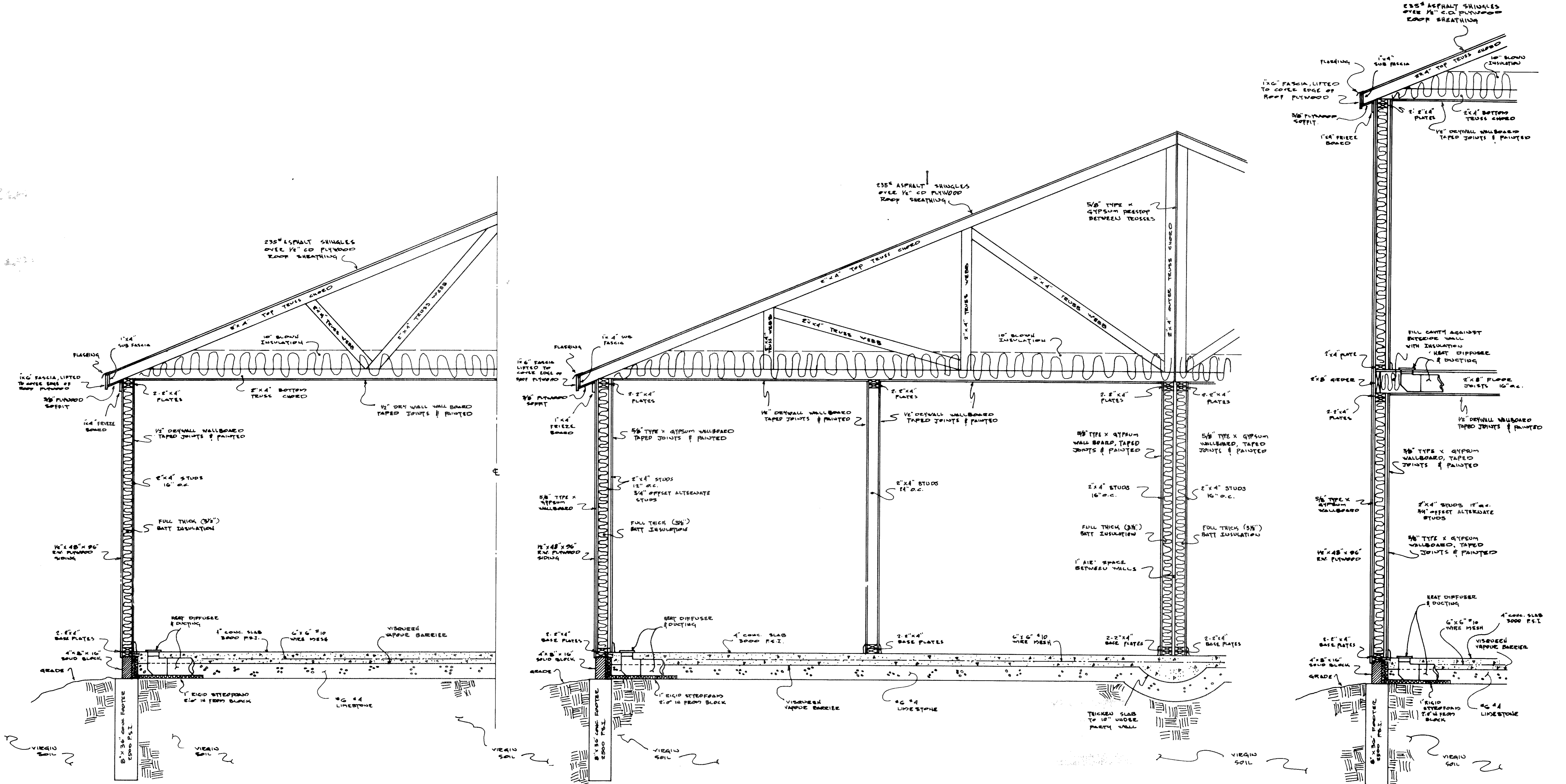
2nd Floor

TRANSFERRED
IN COMPLIANCE WITH SEC. 310.202
OHIO REV. CODE
APR 25 1974
JULIAN A. RUCK
HOBAIN COUNTY AUDITOR

EXHIBIT "A"
YOUNG FOREST CONDOMINIUM
TYPICAL WALL SECTIONS

SCALE 3/4" = 1'-0"

APRIL 1974



TYPICAL EXTERIOR WALL SECTION

SOUND & FIRE EXTERIOR WALL SECTION

INTERIOR PARTITION WALL SECTION

COMMON PARTY WALL SECTION

2 STORY WALL SECTION

TRANSFERRED
IN COMPLIANCE WITH SEC. 519.202
(2014 REV. CODE)

APR 25 1974

JULIAN A. RYAN
LEWIS & CLARK COUNTY ARCHITECTS