

UTILITY EASEMENT

BOB SCHMITT HOMES INC., the owner of the within platted land does hereby grant unto the OHIO EDISON Company and the ELYRIA TELEPHONE Company...

BOB SCHMITT HOMES INC.

President Robert F. Schmitt VICE-PRESIDENT Joseph J. Nichols

Accepted: OHIO EDISON CO. By [Signature] Accepted: ELYRIA TELEPHONE CO. By [Signature]

GENERAL PLAN OF RESIDENTIAL DEVELOPMENT

The undersigned, being the owner of the premises designated 'Mills Creek Subdivision Section E' as shown on this plat, has established a general plan for the improvement and development of such premises...

BOB SCHMITT HOMES INC.

President Robert F. Schmitt

Vice President Joseph J. Nichols

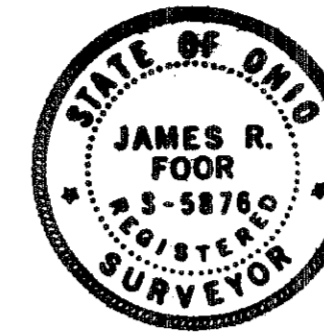
BOB SCHMITT HOMES INC. / SUCCESSOR TO MILLS CREEK HOMES INC.

MILLS CREEK SUBD. SECTION 'E'

AND REPLATING LOTS 9 AND 10 SUBDIVISION 'A', AND 55 AND 56 SUBDIVISION 'B' SITUATED IN THE CITY OF NORTH RIDGEVILLE LORAIN COUNTY STATE OF OHIO BEING PART OF ORIGINAL LOT 5

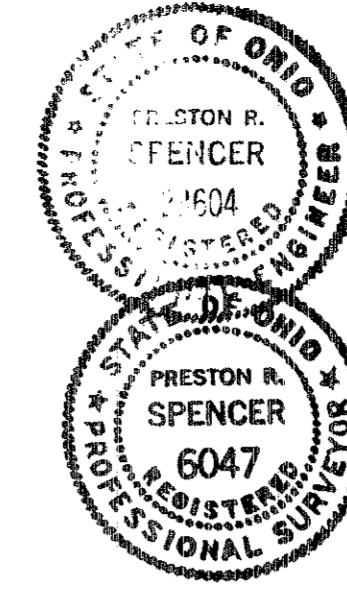
ACRES IN BLOCKS A-B+C = 0.534 ACRES IN LOTS = 81.496 ACRES IN STREETS = 17.294 ACRES IN PARKS = 4.179 TOTAL ACRES = 103.503

ACRES IN BLOCKS A = 0.1947 B = 0.1942 C = 0.1431



APPROVALS OF THE CITY OF NORTH RIDGEVILLE

Approved this 16 day of April 1972 [Signature] Chairman, City Planning Commission Approved this 10 day of April 1973 [Signature] Mayor Approved this 16 day of April 1974 [Signature] City Engineer Approved this 16 day of April 1974 [Signature] By Resolution No. 328-74 Clerk of Council



SURVEYOR'S CERTIFICATE

Monuments were found at all points indicated hereon and iron monuments were set at all points indicated thus. Distances are given in feet and decimal parts thereof. Bearings were assumed for the purpose of describing the various angles all of which we certify to be correct.

Surveyor No. 6047 Civil Engineer No. 23604

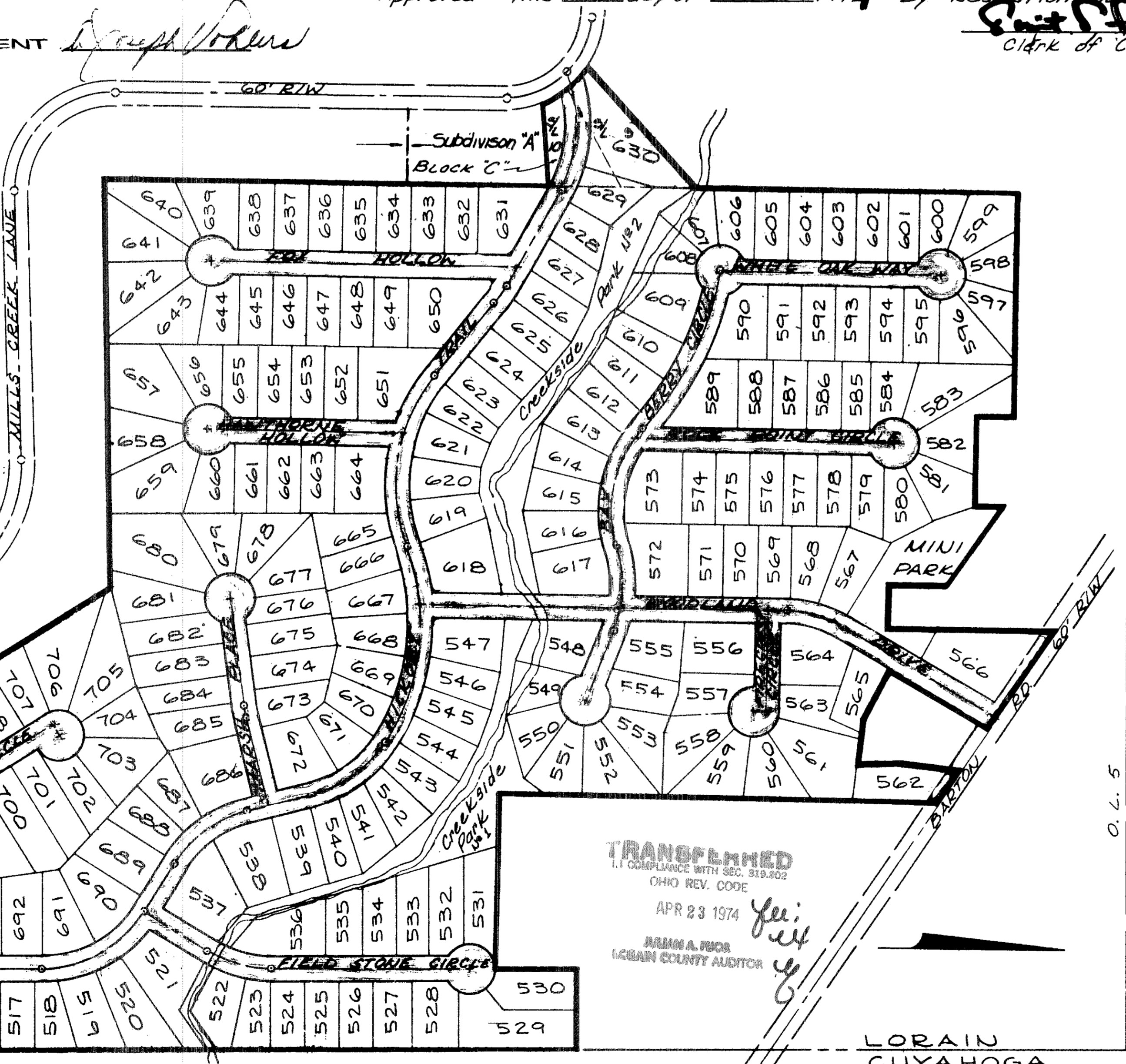
ACCEPTANCE AND DEDICATION

We, the undersigned owners of the land shown on this plat, and subdivision of the same and dedicate to public use Fox Hollow (60' wide), White Oak Way (60' wide), Hawthorne Hollow (60' wide), Rock Point Circle (60' wide), Woodland Drive (60' wide), Field Stone Circle (60' wide), Oakwood Circle (60' wide), Firecrest Circle (60' wide), Marsh Place (60' wide), Hickory Trail (60' wide), Bay Berry Circle (60' wide), and Southern Portion of Barton Road, as shown hereon.

BOB SCHMITT HOMES INC. President Robert F. Schmitt Vice-President Joseph J. Nichols Vice-President-Treasurer James J. Nichols

County of Lorain, State of Ohio S.S. Before me, a Notary Public in and for said County and State, personally appeared the above signed Bob Schmitt Homes Inc.; Robert F. Schmitt, J. Joseph Vohlers, and James J. Nichols, who acknowledged the signing of the foregoing instrument to be the free act and deed of said corporation and the free act and deed of them personally as such officers. In testimony whereof I have hereunto set my hand and official seal at North Ridgeville, Ohio this 5th day of March 1974.

Notary Public My Commission Expires



INDEX TO PLAT SHEETS table with columns for SUBLOTS, TITLE SHEET, and SHEET. Includes entries for 501-514 Inc., 515-537 Inc., 538-547 Inc., CREEKSIDE PARK No. 1, MINI PARK, CREEKSIDE PARK No. 2, BLOCK 'C', BLOCK 'A', BLOCK 'B', and TOTAL LOTS 214.

MORTGAGE RELEASE

The undersigned, Cardinal Federal Savings and Loan Association, mortgagee of the land shown hereon, hereby consents to the dedication of the streets shown hereon in red shade and the land within the boundaries of said streets is hereby released from the operation of the mortgage to Cardinal Federal Savings and Loan Association dated May 22, 1970 and recorded in Volume 1135 Page 195 of Lorain County Records of Mortgages.

CARDINAL FEDERAL SAVINGS AND LOAN ASSOCIATION Vice-President [Signature] Witness [Signature]

County of Cuyahoga State of Ohio S.S. Before me, a Notary Public in and for said County and State, personally appeared ROBERT W. WILSON & JEANNE I. REINHARD of Cardinal Federal Savings and Loan Association, the corporation which executed the foregoing instrument who acknowledged that he did sign said instrument as such officer on behalf of said corporation and that said instrument is his free act and deed individually and as such officer and the free and corporate act and deed of said Cardinal Federal Savings and Loan Association. In testimony whereof I have hereunto set my hand and official seal at CLEVELAND Ohio this 6th day of MARCH 1974.

Notary Public My Commission Expires

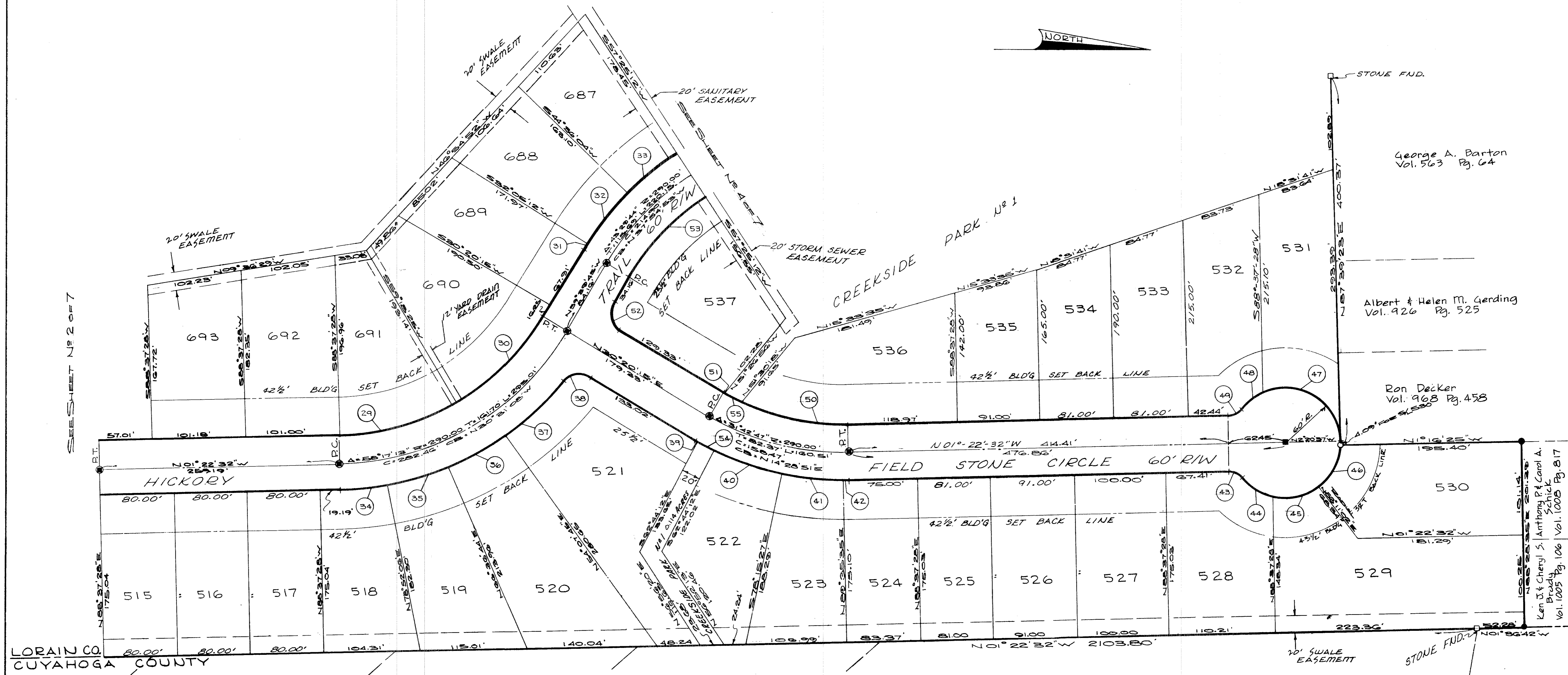
TRANSFER:

Received for Record APR 23 1974 at 1:33'clock P.M. in PLAT RECORD, VOL. 29, PAGE 52, Lorain County Recorder





SEE SHEET NO 2 OF 7



LORAIN CO. CUYAHOGA COUNTY

St. Germain Foundation      Dorothy M. Dorn      Fred H. & Lillian Daiber      Betty S. & W. D. Farvar

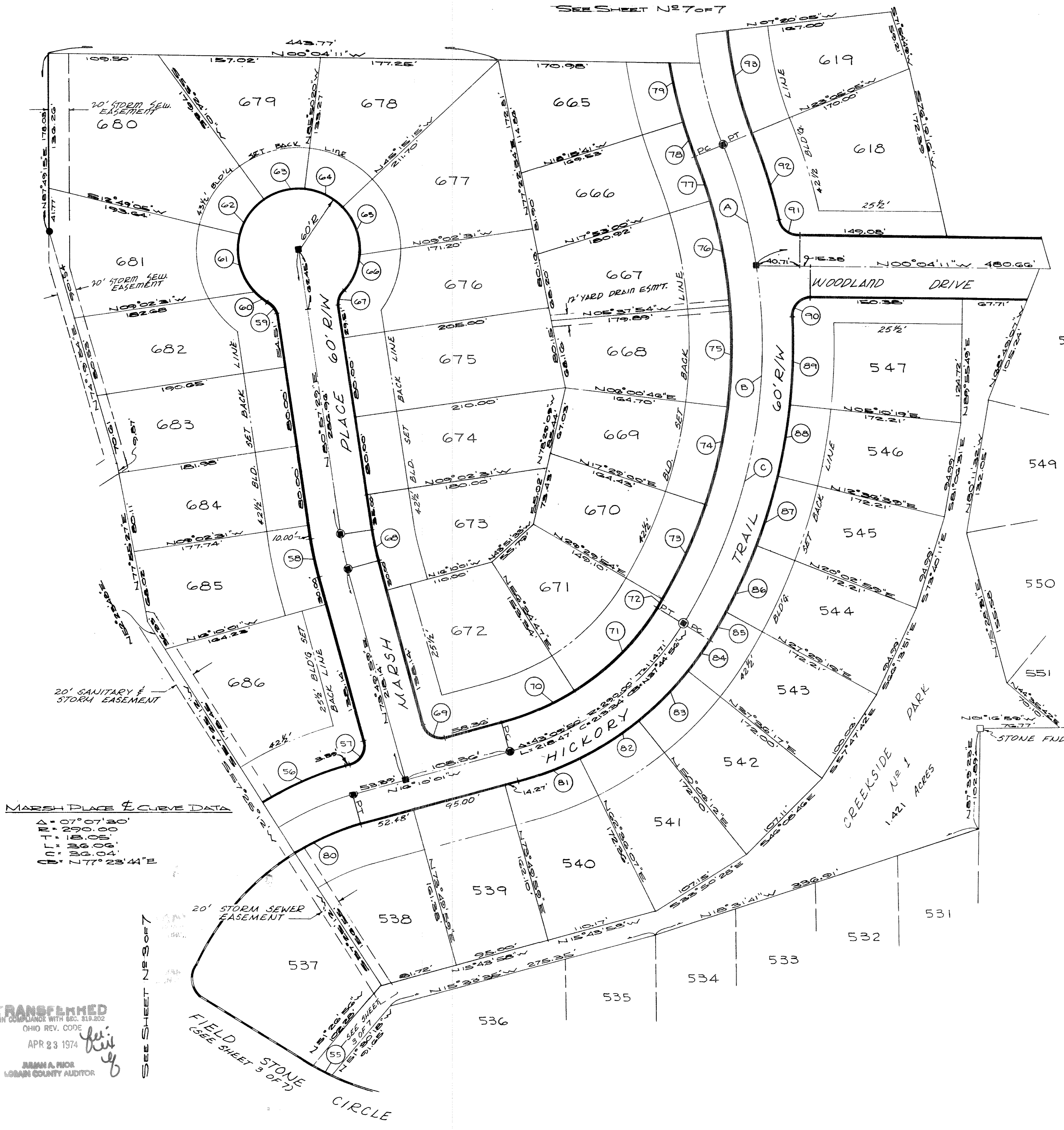
**TRANSFERRED**  
 IN COMPLIANCE WITH SEC. 919.022  
 OHIO REV. CODE  
 APR 23 1974  
 JULIAN A. PIOR  
 LORAIN COUNTY AUDITOR

PROPERTY LINE CURVE DATA

29 Δ=29°19'03" R=260.00' T=68.01' L=133.04' C=131.59' CB=N16°20'W	30 Δ=28°56'10" R=260.00' T=67.16' L=131.46' C=129.06' CB=N45°10'40"W	31 Δ=0°44'57" R=320.00' T=4.88' L=9.77' C=9.77' CB=N89°54'16"E	32 Δ=12°30'52" R=320.00' T=35.08' L=69.89' C=69.75' CB=S51°39'22"E	33 Δ=12°49'08" R=320.00' T=35.95' L=71.59' C=71.44' CB=N64°34'47"W	34 Δ=09°45'22" R=320.00' T=27.31' L=54.48' C=54.42' CB=N06°15'3"W	35 Δ=12°E'22" R=320.00' T=34.36' L=68.48' C=68.32' CB=N17°15'35"W	36 Δ=12°28'59" R=320.00' T=34.99' L=69.72' C=69.58' CB=N29°37'45"W	37 Δ=15°20'07" R=320.00' T=43.08' L=85.05' C=85.39' CB=N43°32'18"W	38 Δ=8°32'37" R=20.00' T=17.25' L=28.46' C=26.12' CB=N10°26'04"W	39 Δ=0°17'00" R=320.00' T=3.58' L=7.17' C=7.17' CB=N294°45'E	40 Δ=15°43'48" R=320.00' T=34.05' L=67.85' C=76.49' CB=N18°36'27"E	41 Δ=12°08'58" R=320.00' T=34.05' L=67.85' C=67.73' CB=N08°40'04"E	42 Δ=0°58'07" R=320.00' T=2.70' L=5.41' C=5.41' CB=N00°58'28"W	43 Δ=51°19'04" R=20.00' T=9.81' L=17.91' C=17.32' CB=N24°17'00"E	44 Δ=32°1'55" R=20.00' T=17.32' L=33.72' C=33.27' CB=N33°50'35"E	45 Δ=51°33'35" R=20.00' T=18.04' L=35.14' C=35.00' CB=N09°32'10"W	46 Δ=55°9'39" R=20.00' T=13.58' L=27.15' C=27.00' CB=N64°34'47"W	47 Δ=115°32'22" R=20.00' T=91.58' L=180.89' C=100.37' CB=S20°58'12"W	48 Δ=26°48'37" R=20.00' T=9.61' L=14.30' C=14.30' CB=S59°17'17"E	49 Δ=51°19'04" R=20.00' T=9.81' L=17.91' C=17.32' CB=S27°02'04"E	50 Δ=26°26'05" R=260.00' T=91.97' L=181.96' C=118.89' CB=N11°30'31"E	51 Δ=0°52'12" R=260.00' T=1.97' L=3.92' C=3.92' CB=N294°09'E	52 Δ=90°00'00" R=20.00' T=20.00' L=21.42' C=21.75' CB=N74°20'5"E	53 Δ=27°04'57" R=260.00' T=62.62' L=122.89' C=121.75' CB=S46°07'16"E	54 Δ=02°34'54" R=260.00' T=10.00' L=20.00' C=20.00' CB=N27°54'5"E	55 Δ=04°24'30" R=260.00' T=10.91' L=20.00' C=20.00' CB=N27°E'45"E
---	--	--	--	--	---	---	--	--	--	--	--	--	--	--	--	---	--	--	--	--	--	--	--	--	---	---

SCALE: 1"=50'





CURVE A DATA	CURVE B DATA	CURVE C DATA
Δ = 13°28'28"	Δ = 40°16'46"	Δ = 53°45'14"
R = 529.93'	R = 529.93'	R = 529.93'
T = 62.60'	T = 194.34'	T = 268.58'
L = 124.63'	L = 372.54'	L = 497.17'
C = 124.34'	C = 364.92'	C = 479.14'
CB = N73°39'09"E	CB = S79°28'14"E	CB = N66°12'28"W

SCALE: 1" = 50'

PROPERTY LINE CURVE DATA

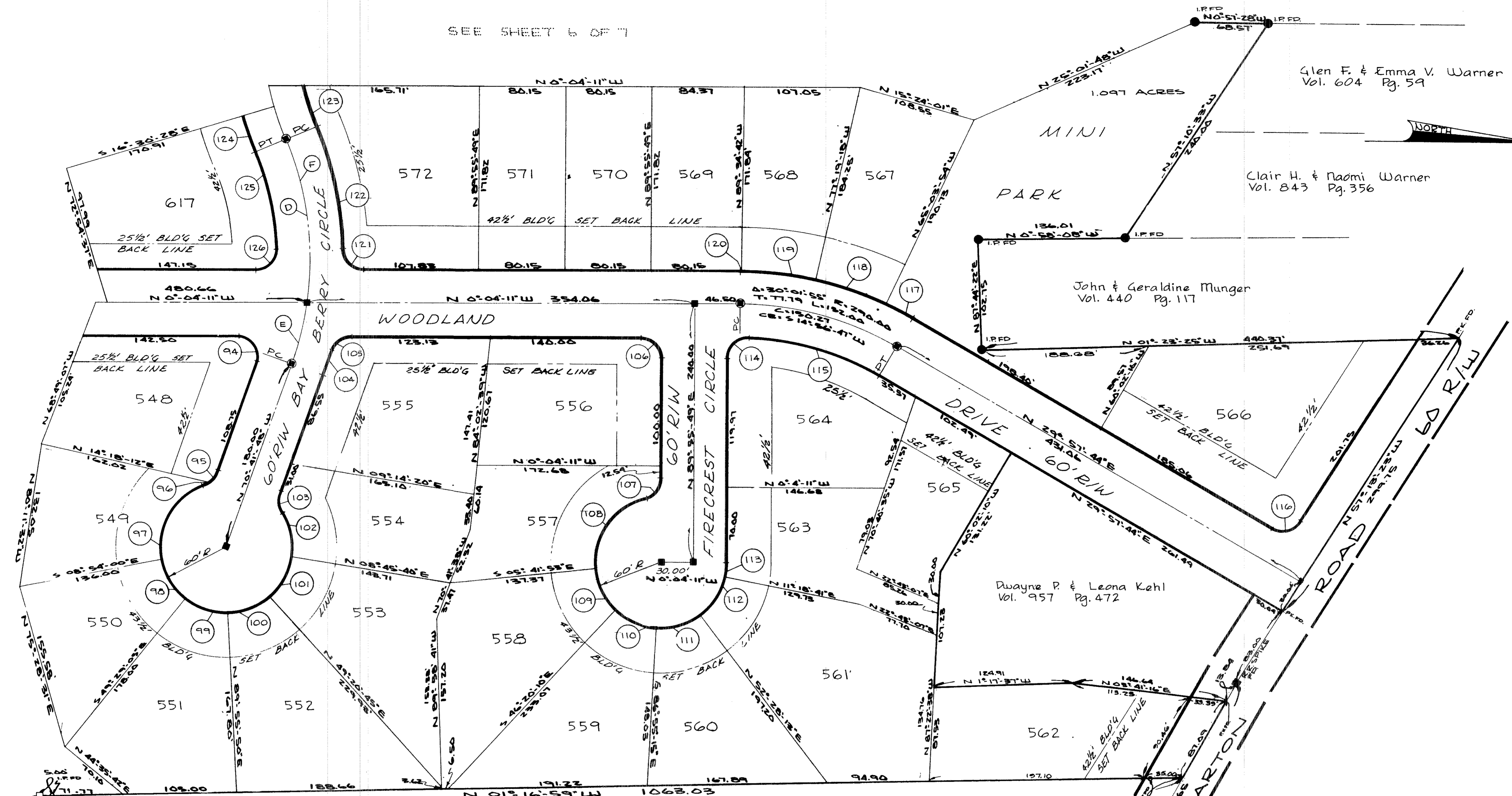
56	57	58	59	60	61	62
Δ = 16°24'47"	Δ = 90°00'00"	Δ = 07°07'30"	Δ = 51°19'04"	Δ = 13°17'25"	Δ = 59°53'15"	Δ = 40°35'05"
R = 320.00'	R = 20.00'	R = 320.00'	R = 20.00'	R = 60.00'	R = 60.00'	R = 60.00'
T = 46.13'	T = 20.00'	T = 19.92'	T = 9.91'	T = 9.91'	T = 34.56'	T = 22.18'
L = 91.67'	L = 31.42'	L = 39.79'	L = 17.91'	L = 13.92'	L = 62.71'	L = 42.50'
C = 91.35'	C = 28.28'	C = 37.76'	C = 17.32'	C = 13.88'	C = 59.89'	C = 41.62'
CB = N72°22'24"E	CB = N10°01'11"W	CB = N77°25'44"E	CB = N55°17'57"E	CB = N30°17'07"E	CB = N72°52'28"E	CB = S56°53'22"E
63	64	65	66	67	68	69
Δ = 40°45'30"	Δ = 40°35'05"	Δ = 47°42'57"	Δ = 39°49'11"	Δ = 51°19'04"	Δ = 07°07'30"	Δ = 90°00'00"
R = 60.00'	R = 60.00'	R = 60.00'	R = 20.00'	R = 20.00'	R = 20.00'	R = 20.00'
T = 22.29'	T = 22.15'	T = 25.53'	T = 21.73'	T = 9.91'	T = 16.15'	T = 20.00'
L = 42.68'	L = 42.50'	L = 48.93'	L = 41.70'	L = 17.91'	L = 32.33'	L = 31.42'
C = 41.79'	C = 41.62'	C = 46.53'	C = 40.86'	C = 17.32'	C = 32.31'	C = 28.28'
CB = S16°30'05"E	CB = N24°27'12"E	CB = N68°36'03"E	CB = S67°36'05"E	CB = S78°22'59"E	CB = N77°23'44"E	CB = S26°49'59"W
70	71	72	73	74	75	76
Δ = 17°51'12"	Δ = 25°54'38"	Δ = 01°10'15"	Δ = 12°00'54"	Δ = 11°26'14"	Δ = 11°36'40"	Δ = 12°15'06"
R = 260.00'	R = 260.00'	R = 499.93'	R = 499.93'	R = 499.93'	R = 499.93'	R = 499.93'
T = 89.44'	T = 59.81'	T = 5.11'	T = 52.61'	T = 50.21'	T = 50.97'	T = 58.95'
L = 79.29'	L = 117.58'	L = 10.22'	L = 104.84'	L = 100.08'	L = 101.60'	L = 106.90'
C = 77.99'	C = 116.58'	C = 10.22'	C = 104.84'	C = 99.92'	C = 101.48'	C = 106.69'
CB = N24°47'31"W	CB = N48°22'32"W	CB = N59°54'58"W	CB = N66°33'33"W	CB = N75°15'07"W	CB = N59°48'44"W	CB = S78°44'53"W
77	78	79	80	81	82	83
Δ = 05°12'05"	Δ = 04°49'24"	Δ = 07°52'43"	Δ = 16°24'47"	Δ = 11°13'52"	Δ = 12°29'55"	Δ = 12°29'55"
R = 499.93'	R = 444.31'	R = 444.31'	R = 320.00'	R = 320.00'	R = 320.00'	R = 320.00'
T = 22.71'	T = 19.71'	T = 30.59'	T = 37.49'	T = 31.46'	T = 35.04'	T = 35.04'
L = 45.38'	L = 37.40'	L = 61.09'	L = 74.45'	L = 74.45'	L = 69.80'	L = 69.80'
C = 45.37'	C = 37.39'	C = 61.05'	C = 74.22'	C = 62.73'	C = 69.97'	C = 69.67'
CB = S69°30'68"W	CB = S69°19'21"W	CB = S75°40'40"W	CB = S24°22'24"E	CB = S21°46'57"E	CB = S33°38'55"E	CB = S46°08'46"E
84	85	86	87	88	89	90
Δ = 06°56'08"	Δ = 02°10'50"	Δ = 07°26'20"	Δ = 07°26'20"	Δ = 07°26'20"	Δ = 05°58'56"	Δ = 93°44'26"
R = 320.00'	R = 559.93'	R = 559.93'	R = 559.93'	R = 559.93'	R = 559.93'	R = 20.00'
T = 19.39'	T = 15.54'	T = 36.40'	T = 36.40'	T = 36.40'	T = 43.98'	T = 21.35'
L = 38.74'	L = 31.08'	L = 72.69'	L = 72.69'	L = 72.69'	L = 87.78'	L = 32.72'
C = 38.71'	C = 31.08'	C = 72.65'	C = 72.65'	C = 72.65'	C = 87.69'	C = 29.19'
CB = S55°14'47"E	CB = N60°55'16"W	CB = N66°13'51"W	CB = N73°40'11"W	CB = N61°06'31"W	CB = N69°39'09"W	CB = S46°56'21"E
91	92	93				
Δ = 76°15'05"	Δ = 09°15'57"	Δ = 15°45'00"				
R = 20.00'	R = 559.93'	R = 384.31'				
T = 18.69'	T = 45.37'	T = 53.15'				
L = 26.62'	L = 90.55'	L = 105.64'				
C = 24.69'	C = 90.45'	C = 105.31'				
CB = N30°03'21"E	CB = N71°32'53"E	CB = S74°47'25"W				

MARSH PLACE CURVE DATA

Δ = 07°07'30"
R = 290.00'
T = 18.05'
L = 36.04'
C = 36.04'
CB = N77°23'44"E

TRANSFERRED  
IN COMPLIANCE WITH SEC. 319.02  
OHIO REV. CODE  
APR 23 1974  
JIMMIE A. FIOR  
LOGAN COUNTY AUDITOR

SEE SHEET 6 OF 7



**CURVE (D) DATA**

Δ: 30°18'19"  
 R: 290.00  
 T: 18.53  
 L: 153.39  
 C: 151.61  
 CB: N 82°17'21"E

**CURVE (E) DATA**

Δ: 11°51'41"  
 R: 290.00  
 T: 30.12  
 L: 60.04  
 C: 59.93  
 CB: S 76°37'39"E

**CURVE (F) DATA**

Δ: 42°10'00"  
 R: 290.00  
 T: 111.80  
 L: 213.42  
 C: 208.64  
 CB: N 88°13'12"E

**TRANSFERRED**  
 IN COMPLIANCE WITH BEO. 819.202  
 OHIO REV. CODE  
 APR 23 1974  
 JAMES A. RIOR  
 LORAIN COUNTY AUDITOR

**PROPERTY LINE CURVE DATA**

94	95	96	97	98	99	100	101	102	103	104	105	106	107	108	109	110
Δ: 109°22'23" R: 20.00 T: 28.23 L: 38.18 C: 32.44 CB: N 84°31'0"E	Δ: 32°28'34" R: 20.00 T: 5.81 L: 11.81 C: 11.16 CB: N 54°34'0"W	Δ: 18°55'30" R: 20.00 T: 3.39 L: 6.61 C: 6.58 CB: N 28°56'20"W	Δ: 79°31'17" R: 60.00 T: 49.92 L: 82.27 C: 76.75 CB: N 57°08'22"W	Δ: 40°35'05" R: 60.00 T: 22.18 L: 42.50 C: 41.62 CB: S 60°48'21"W	Δ: 40°35'05" R: 60.00 T: 22.18 L: 42.50 C: 41.62 CB: S 20°19'22"W	Δ: 40°35'05" R: 60.00 T: 22.18 L: 42.50 C: 41.62 CB: S 20°19'22"W	Δ: 40°35'05" R: 60.00 T: 22.18 L: 42.50 C: 41.62 CB: S 60°48'21"E	Δ: 40°46'32" R: 60.00 T: 22.30 L: 42.70 C: 41.81 CB: N 78°22'24"E	Δ: 31°19'04" R: 20.00 T: 9.61 L: 17.91 C: 17.32 CB: N 85°38'40"E	Δ: 04°23'18" R: 320.00 T: 12.26 L: 24.51 C: 24.50 CB: S 72°59'21"E	Δ: 75°00'55" R: 20.00 T: 15.35 L: 26.18 C: 24.36 CB: S 37°34'35"E	Δ: 90°0'0" R: 20.00 T: 20.00 L: 31.42 C: 28.28 CB: S 44°59'49"E	Δ: 75°31'21" R: 20.00 T: 15.49 L: 26.36 C: 24.50 CB: N 55°07'22"W	Δ: 81°09'08" R: 60.00 T: 51.38 L: 84.98 C: 78.05 CB: N 55°07'22"W	Δ: 46°38'17" R: 60.00 T: 22.22 L: 42.54 C: 41.67 CB: S 63°58'55"W	Δ: 46°38'17" R: 60.00 T: 22.18 L: 42.50 C: 41.62 CB: S 23°22'17"W
111	112	113	114	115	116	117	118	119	120	121	122	123	124	125	126	
Δ: 40°34'32" R: 60.00 T: 22.20 L: 42.52 C: 41.64 CB: S 17°13'31"E	Δ: 41°09'32" R: 60.00 T: 22.53 L: 43.10 C: 42.18 CB: S 55°06'55"E	Δ: 11°22'52" R: 60.00 T: 3.98 L: 7.96 C: 11.90 CB: S 84°22'45"E	Δ: 90°56'08" R: 20.00 T: 20.29 L: 31.71 C: 28.49 CB: S 44°37'07"E	Δ: 29°11'47" R: 260.00 T: 17.72 L: 132.49 C: 131.04 CB: S 15°21'51"W	Δ: 87°11'07" R: 20.00 T: 19.04 L: 30.43 C: 27.58 CB: S 13°37'50"E	Δ: 05°01'35" R: 320.00 T: 14.05 L: 28.09 C: 28.07 CB: S 27°26'35"W	Δ: 12°15'24" R: 320.00 T: 34.36 L: 68.45 C: 68.32 CB: S 18°48'24"W	Δ: 12°15'24" R: 320.00 T: 34.36 L: 68.45 C: 68.32 CB: S 04°55'00"W	Δ: 0°29'29" R: 320.00 T: 1.87 L: 2.74 C: 2.74 CB: S 0°16'34"W	Δ: 81°57'45" R: 20.00 T: 19.30 L: 30.70 C: 27.78 CB: N 43°54'42"E	Δ: 26°45'22" R: 320.00 T: 21.08 L: 115.93 C: 115.29 CB: N 77°20'53"E	Δ: 09°16'21" R: 260.00 T: 21.08 L: 42.08 C: 42.08 CB: N 71°40'25"E	Δ: 06°21'20" R: 320.00 T: 17.77 L: 35.50 C: 35.48 CB: N 70°16'52"E	Δ: 19°54'25" R: 260.00 T: 45.63 L: 90.33 C: 89.88 CB: N 77°05'23"E	Δ: 92°53'14" R: 20.00 T: 21.03 L: 32.42 C: 28.99 CB: S 40°36'48"E	

SCALE: 1"=50'



CURVE (G) DATA

Δ: 08°-14'-02"  
R: 290.00  
T: 20.87  
L: 41.67  
C: 41.64  
CB: S 55°-48'-49"E

CURVE (H) DATA

Δ: 51°-55'-58"  
R: 290.00  
T: 141.23  
L: 268.86  
C: 253.95  
CB: S 06°-53'-49"E

CURVE (J) DATA

Δ: 60°-10'-00"  
R: 290.00  
T: 157.99  
L: 304.53  
C: 290.73  
CB: S 82°-46'-48"E

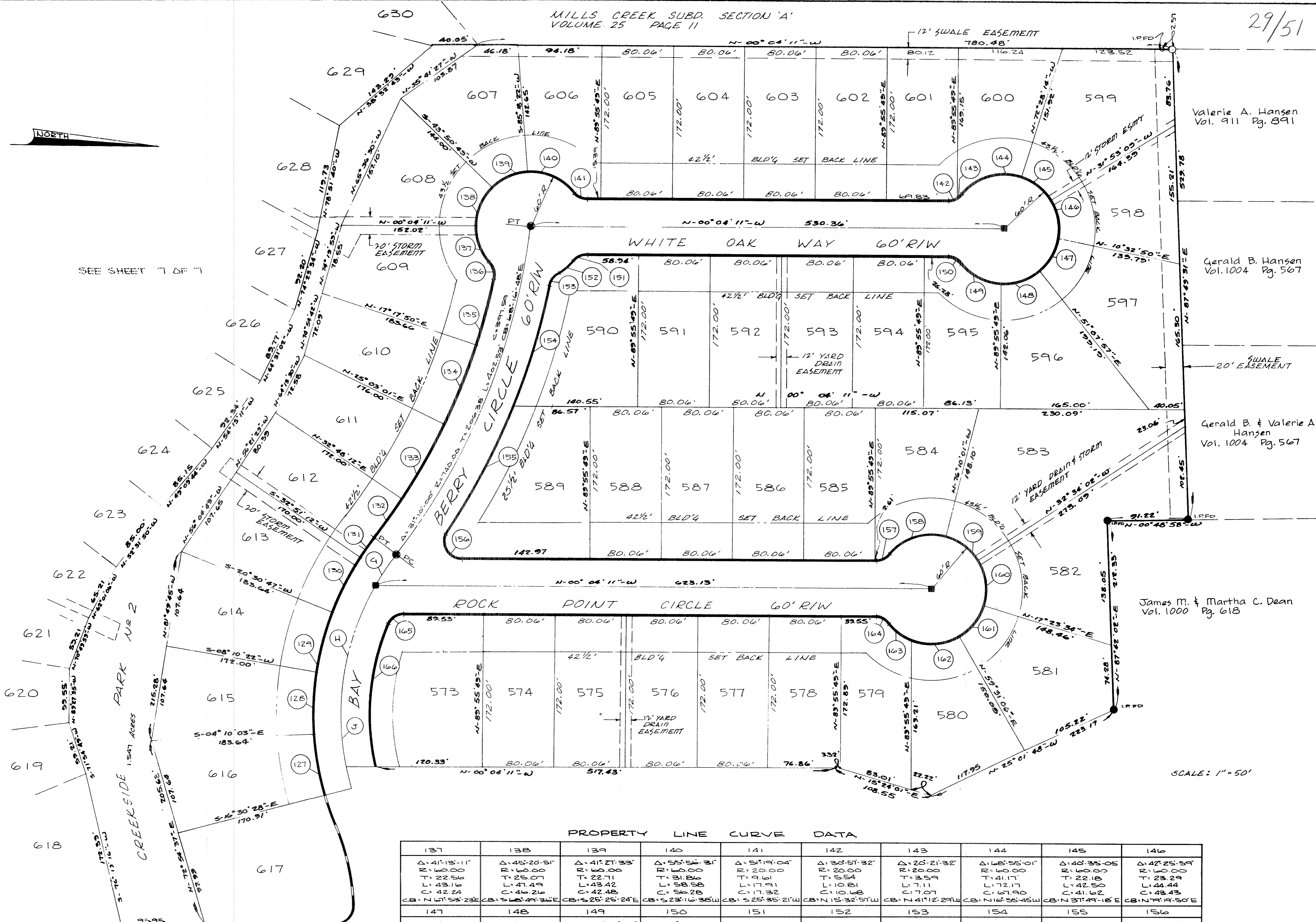
SEE SHEET 7 OF 7

PROPERTY LINE CURVE DATA

127	128
Δ: 12°-20'-28"	Δ: 12°-20'-25"
R: 320.00	R: 320.00
T: 34.59	T: 34.59
L: 68.92	L: 68.92
C: 68.79	C: 68.79
CB: S 63°-19'-01"E	CB: S 61°-51'-36"E
129	130
Δ: 12°-20'-25"	Δ: 12°-20'-25"
R: 320.00	R: 320.00
T: 34.59	T: 34.59
L: 68.92	L: 68.92
C: 68.79	C: 68.79
CB: S 15°-39'-25"E	CB: S 63°-19'-01"E
131	132
Δ: 04°-21'-00"	Δ: 4°-30'-00"
R: 320.00	R: 710.00
T: 12.43	T: 27.90
L: 24.85	L: 55.76
C: 24.85	C: 55.75
CB: S 54°-55'-18"E	CB: S 54°-55'-45"E
133	134
Δ: 01°-45'-11"	Δ: 01°-45'-11"
R: 710.00	R: 710.00
T: 48.11	T: 48.11
L: 96.07	L: 96.07
C: 96.00	C: 96.00
CB: S 67°-04'-24"E	CB: S 67°-04'-35"E
135	136
Δ: 06°-09'-06"	Δ: 52°-51'-51"
R: 710.00	R: 20.00
T: 38.15	T: 10.16
L: 76.23	L: 18.30
C: 76.19	C: 18.12
CB: S 75°-46'-43"E	CB: N 74°-12'-45"E

SEE SHEET 4 OF 7

TRANSMITTED  
IN COMPLIANCE WITH REG. 318.02  
OHIO REV. CODE  
APR 23 1974  
JENN A. NICOL  
LOHMAN COUNTY AUDITOR



PROPERTY LINE CURVE DATA

137	138	139	140	141	142	143	144	145	146
Δ: 41°-13'-11"	Δ: 45°-20'-51"	Δ: 41°-21'-33"	Δ: 55°-54'-31"	Δ: 51°-19'-04"	Δ: 30°-51'-32"	Δ: 20°-21'-32"	Δ: 65°-55'-01"	Δ: 40°-35'-05"	Δ: 42°-25'-59"
R: 60.00	R: 60.00	R: 60.00	R: 60.00	R: 20.00	R: 20.00	R: 20.00	R: 60.00	R: 60.00	R: 60.00
T: 22.56	T: 25.07	T: 22.71	T: 31.86	T: 9.61	T: 5.54	T: 3.59	T: 41.17	T: 22.18	T: 23.29
L: 43.16	L: 47.49	L: 43.42	L: 58.58	L: 17.91	L: 10.81	L: 7.11	L: 72.17	L: 42.50	L: 44.44
C: 42.24	C: 44.24	C: 42.48	C: 54.28	C: 17.32	C: 10.68	C: 7.07	C: 67.90	C: 41.62	C: 43.43
CB: N 15°-53'-23"E	CB: S 25°-49'-36"E	CB: S 25°-25'-24"E	CB: S 23°-16'-35"W	CB: S 25°-35'-21"W	CB: N 15°-32'-51"W	CB: N 41°-12'-29"W	CB: N 16°-35'-45"W	CB: N 31°-49'-18"E	CB: N 19°-19'-50"E
147	148	149	150	151	152	153	154	155	156
Δ: 40°-35'-07"	Δ: 41°-16'-53"	Δ: 48°-50'-03"	Δ: 51°-19'-04"	Δ: 51°-19'-04"	Δ: 21°-13'-14"	Δ: 49°-00'-56"	Δ: 10°-35'-47"	Δ: 11°-50'-24"	Δ: 123°-19'-25"
R: 60.00	R: 60.00	R: 60.00	R: 20.00	R: 20.00	R: 60.00	R: 20.00	R: 770.00	R: 770.00	R: 20.00
T: 22.19	T: 22.60	T: 27.24	T: 9.61	T: 9.61	T: 11.24	T: 9.12	T: 71.41	T: 79.84	T: 37.08
L: 42.50	L: 43.23	L: 51.14	L: 17.91	L: 17.91	L: 22.22	L: 17.91	L: 142.40	L: 159.12	L: 43.05
C: 41.62	C: 42.30	C: 49.41	C: 17.32	C: 17.32	C: 22.09	C: 16.59	C: 142.20	C: 158.83	C: 35.21
CB: S 59°-09'-37"E	CB: S 18°-13'-37"E	CB: S 26°-49'-51"W	CB: S 25°-43'-21"W	CB: S 25°-43'-43"E	CB: S 40°-44'-36"E	CB: S 54°-40'-29"E	CB: S 73°-53'-04"E	CB: S 12°-39'-56"E	CB: N 61°-35'-32"E
157	158	159	160	161	162	163	164	165	166
Δ: 51°-19'-04"	Δ: 65°-13'-14"	Δ: 48°-35'-59"	Δ: 49°-51'-35"	Δ: 42°-01'-32"	Δ: 51°-55'-19"	Δ: 29°-48'-28"	Δ: 51°-19'-04"	Δ: 67°-39'-49"	Δ: 35°-51'-21"
R: 60.00	R: 60.00	R: 60.00	R: 60.00	R: 60.00	R: 60.00	R: 60.00	R: 20.00	R: 20.00	R: 20.00
T: 9.61	T: 38.39	T: 24.00	T: 27.95	T: 23.11	T: 29.31	T: 15.97	T: 9.61	T: 13.40	T: 84.12
L: 17.91	L: 68.30	L: 45.32	L: 52.32	L: 44.11	L: 54.37	L: 17.91	L: 17.91	L: 23.62	L: 162.72
C: 17.32	C: 64.67	C: 44.56	C: 50.68	C: 43.13	C: 52.53	C: 17.32	C: 17.32	C: 22.27	C: 160.07
CB: N 25°-43'-43"W	CB: N 18°-46'-38"W	CB: N 35°-31'-58"E	CB: N 82°-24'-46"E	CB: S 51°-32'-46"E	CB: S 04°-31'-15"E	CB: S 33°-20'-39"W	CB: S 25°-35'-21"W	CB: S 33°-54'-05"E	CB: S 85°-39'-45"E

SCALE: 1" = 50'

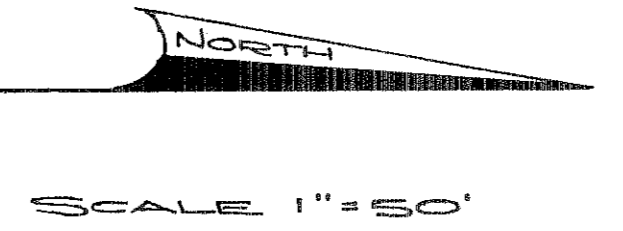
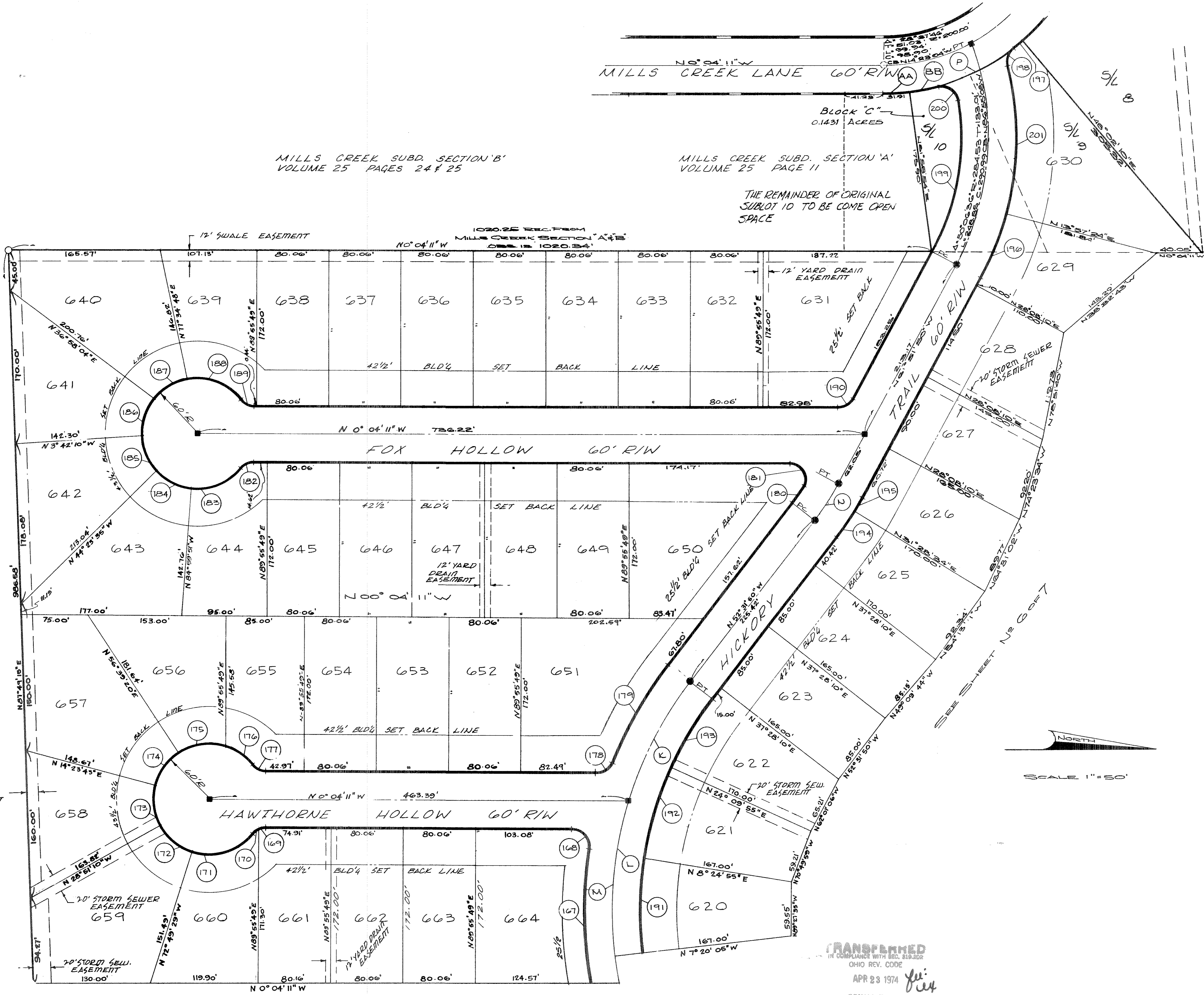


MILLS CREEK SUBD. SECTION 'B'  
VOLUME 25 PAGES 24 & 25

MILLS CREEK SUBD. SECTION 'B'  
VOLUME 25 PAGES 24 & 25

MILLS CREEK SUBD. SECTION 'A'  
VOLUME 25 PAGE 11

THE REMAINDER OF ORIGINAL  
SUBLOT 10 TO BE COME OPEN  
SPACE



TRANSFERRED  
IN COMPLIANCE WITH RC 163.022  
OHIO REV. CODE

APR 23 1974

JAMES A. FROM  
URBAN COUNTY AUDITOR

SEE SHEET NO 4 OF 7

167 Δ = 19°17'28" R = 444.31 T = 75.51 L = 149.60 C = 148.89 CB = 509°15'28"W	168 Δ = 98°58'41" R = 20.00 T = 23.41 L = 34.55 C = 30.41 CB = N49°25'09"E	169 Δ = 15°15'06" R = 20.00 T = 2.67 L = 5.31 C = 5.30 CB = N7°40'44"W
170 Δ = 36°05'58" R = 20.00 T = 6.52 L = 12.60 C = 12.39 CB = N33°20'16"W	171 Δ = 68°33'46" R = 60.00 T = 40.00 L = 71.80 C = 61.59 CB = N17°06'22"W	172 Δ = 43°58'19" R = 60.00 T = 24.22 L = 46.05 C = 44.93 CB = N39°09'41"E
173 Δ = 43°14'53" R = 60.00 T = 23.19 L = 45.29 C = 44.22 CB = N82°46'11"E	174 Δ = 42°15'31" R = 60.00 T = 23.19 L = 44.26 C = 43.26 CB = 554°28'28"E	175 Δ = 53°10'02" R = 60.00 T = 30.02 L = 55.68 C = 53.70 CB = 56°45'39"E
176 Δ = 31°25'31" R = 60.00 T = 16.88 L = 32.91 C = 32.50 CB = 535°32'08"W	177 Δ = 51°19'04" R = 20.00 T = 9.61 L = 17.91 C = 17.32 CB = 525°35'21"W	178 Δ = 68°11'46" R = 20.00 T = 15.54 L = 23.81 C = 22.42 CB = N34°10'04"W
179 Δ = 15°44'07" R = 444.31 T = 61.40 L = 122.02 C = 121.64 CB = N60°23'53"W	180 Δ = 4°12'58" R = 206.95 T = 9.82 L = 19.64 C = 19.63 CB = N54°25'10"W	181 Δ = 125°19'28" R = 20.00 T = 37.08 L = 43.05 C = 35.21 CB = 66°35'35"W
182 Δ = 51°19'04" R = 20.00 T = 9.61 L = 17.91 C = 17.32 CB = 525°43'43"E	183 Δ = 56°23'24" R = 60.00 T = 32.17 L = 59.05 C = 56.70 CB = 523°11'33"E	184 Δ = 40°36'16" R = 60.00 T = 22.20 L = 42.52 C = 41.64 CB = 523°18'17"W
185 Δ = 40°41'25" R = 60.00 T = 22.25 L = 42.61 C = 41.72 CB = 565°57'07"W	186 Δ = 40°40'14" R = 60.00 T = 22.24 L = 42.59 C = 41.70 CB = N73°22'03"W	187 Δ = 40°36'44" R = 60.00 T = 22.20 L = 42.53 C = 41.64 CB = N32°43'34"W
188 Δ = 63°40'05" R = 60.00 T = 31.25 L = 66.73 C = 63.30 CB = N10°24'50"E	189 Δ = 51°19'04" R = 20.00 T = 9.61 L = 17.91 C = 17.32 CB = N25°35'21"E	190 Δ = 61°47'39" R = 20.00 T = 11.97 L = 21.57 C = 20.54 CB = N30°58'00"W
191 Δ = 15°45'00" R = 384.31 T = 53.16 L = 105.64 C = 105.31 CB = N89°27'35"W	192 Δ = 15°45'00" R = 384.31 T = 53.16 L = 105.64 C = 105.31 CB = N73°42'35"W	193 Δ = 15°18'15" R = 384.31 T = 44.82 L = 89.24 C = 89.04 CB = N59°10'58"W
194 Δ = 5°59'36" R = 326.95 T = 17.12 L = 34.20 C = 34.18 CB = N55°31'35"W	195 Δ = 3°20'24" R = 326.95 T = 9.53 L = 19.06 C = 19.06 CB = N60°11'35"W	196 Δ = 14°10'46" R = 314.53 T = 39.12 L = 77.64 C = 77.64 CB = N68°57'13"W
197 Δ = 2°11'23" R = 230.00 T = 4.40 L = 8.79 C = 8.79 CB = N39°32'21"W	198 Δ = 66°28'09" R = 20.00 T = 13.10 L = 23.20 C = 21.92 CB = N71°40'48"W	199 Δ = 37°57'58" R = 254.53 T = 87.56 L = 168.66 C = 168.59 CB = N80°50'49"W
200 Δ = 94°49'45" R = 20.00 T = 21.76 L = 33.10 C = 29.45 CB = 532°45'20"W	201 Δ = 28°52'16" R = 314.53 T = 80.97 L = 158.49 C = 158.82 CB = 589°31'10"W	K Δ = 20°21'52" R = 414.31 T = 21.24 L = 48.37 C = 48.32 CB = N57°11'50"W
L Δ = 40°12'23" R = 414.31 T = 151.64 L = 290.73 C = 284.80 CB = N87°01'07"E	M Δ = 60°23'15" R = 414.31 T = 241.88 L = 437.87 C = 417.77 CB = N82°48'27"W	N Δ = 9°20'00" R = 296.95 T = 24.24 L = 48.37 C = 48.32 CB = N57°11'50"W
P Δ = 23°47'10" R = 230.00 T = 48.44 L = 95.48 C = 94.80 CB = N26°58'13"W	AA Δ = 7°56'57" R = 230.00 T = 31.88 L = 31.91 C = 31.88 CB = N4°02'39"W	BB Δ = 6°28'25" R = 230.00 T = 26.64 L = 26.66 C = 26.64 CB = S11°20'21"E