

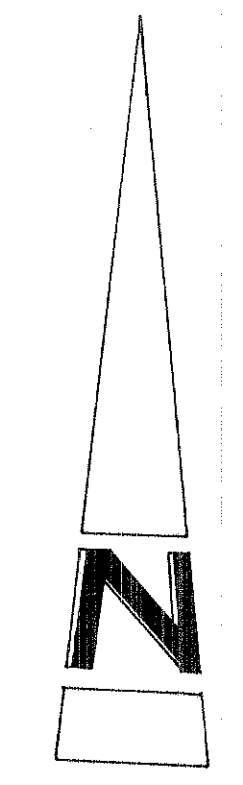
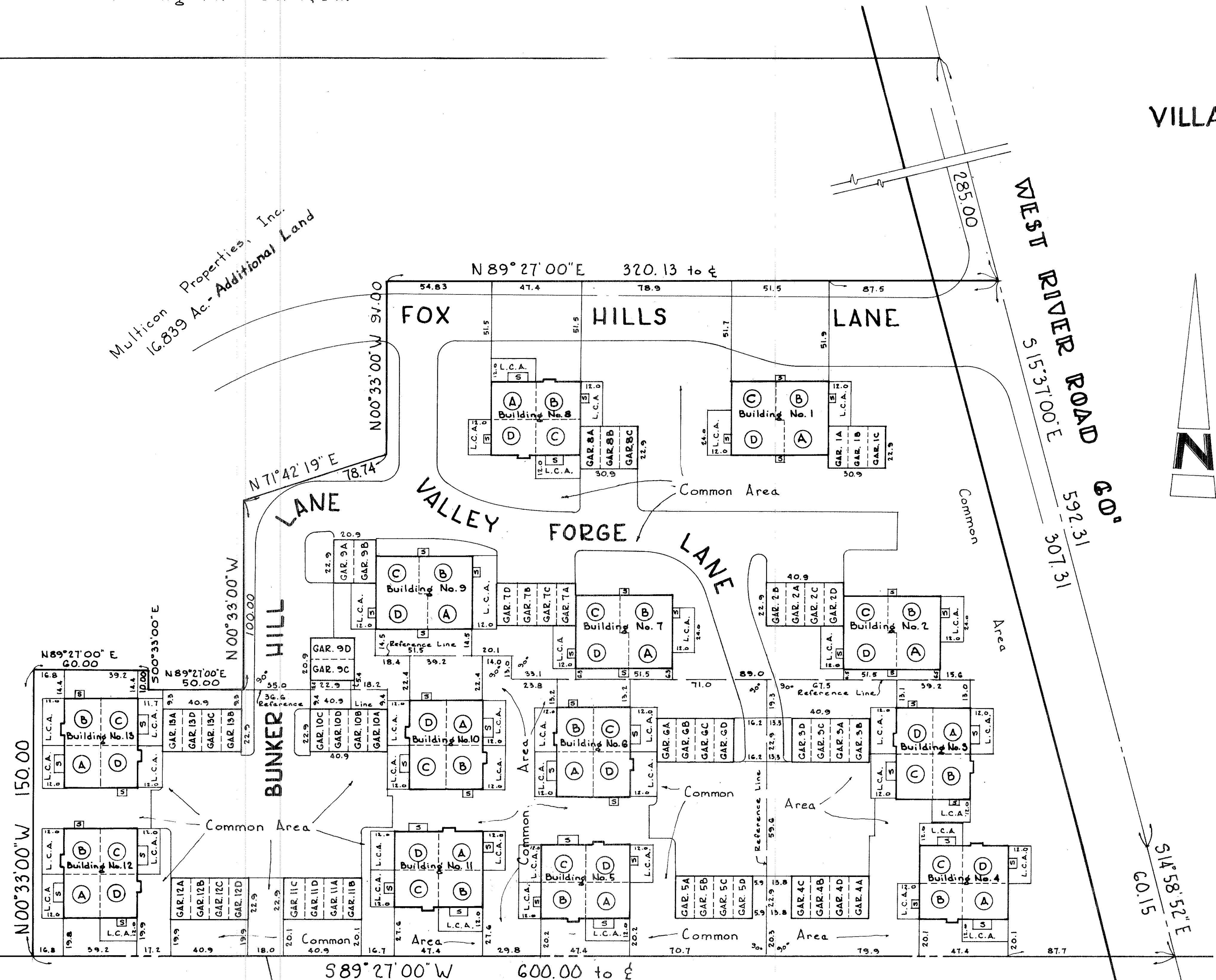
Klingshirn - Towner, Inc.

PHASE I VILLAGE GREENE CONDOMINIUM PLAT VOL. 27-PGS. 53, 54 & 55 - EXHIBIT "C"

Situated In The City Of Elyria, County Of Lorain
And State Of Ohio And Known As Being Part
Of Original Elyria Township Lot No. 30,
West Of River.
Containing 3.799 Acres.

REVISED PHASE I VILLAGE GREENE CONDOMINIUM EXHIBIT "C"

BUILDING NO.	UNIT	ELEVATION (U.S.G.S.)			
		FIN. 1 ST FLOOR	FIN. 1 ST FLR. CEIL.	FIN. 2 ND FLOOR	FIN. 2 ND FLR. CEIL.
1	A & C	700.2	—	710.0	717.4
1	B & D	700.2	708.2	—	—
2	A & C	702.9	—	712.7	720.1
2	B & D	702.9	710.9	—	—
3	A, B, C, D	702.6	710.6	712.4	719.8
4	A, B, C, D	702.8	710.8	712.6	720.0
5	A, B, C, D	701.5	709.5	711.3	718.7
6	A, B, C, D	701.3	709.3	711.1	718.5
7	A & C	700.9	—	710.7	718.1
7	B & D	700.9	708.9	—	—
8	A, B, C, D	699.8	707.8	709.6	717.0
9	A & C	700.5	—	710.3	717.7
9	B & D	700.5	708.5	—	—
10	A, B, C, D	701.0	709.0	710.8	718.2
11	A, B, C, D	701.4	709.4	711.2	718.6
12	A, B, C, D	700.6	708.6	710.4	717.8
13	A, B, C, D	700.4	708.4	710.2	717.6



I do hereby certify these drawings show graphically, all the particulars of the buildings of the Village Greene Condominium Phase I, including the layout, location, designation and dimensions of each unit and the common areas and buildings as constructed.

Damon A. Braun
Professional Engineer No. 27049

I do hereby certify the buildings of the Village Greene Condominium, Phase I, are located as show on these drawings and elevations above sea level are correct and said drawings accurately show the buildings as constructed.

Joseph Prenosil
Reg. Surveyor No. 5396

Note: 'L.C.A.' Denotes 'Limited Common Area'
'S' Denotes 'Stoop'

O.L. 30
O.L. 29

The Orlean Company

Ralph Richards, Alma B. Veres, Aaron E. Richards

RECEIVED FOR RECORD
AT 2:56 P.M.
APR 10 1974
RECORDED IN LORAIN COUNTY RECORDS
Page 18-28

NO TRANSFER NECESSARY
JULIAN A. PUOR
LORAIN COUNTY AUDITOR
Deputy

Julian A. Puor
Auditor

VILLAGE GREENE CONDOMINIUM
PHASE I
EXHIBIT "C"

LOCATION PLAT

SCALE 1"=30' OCT, 1972 SHEET 1 OF 3

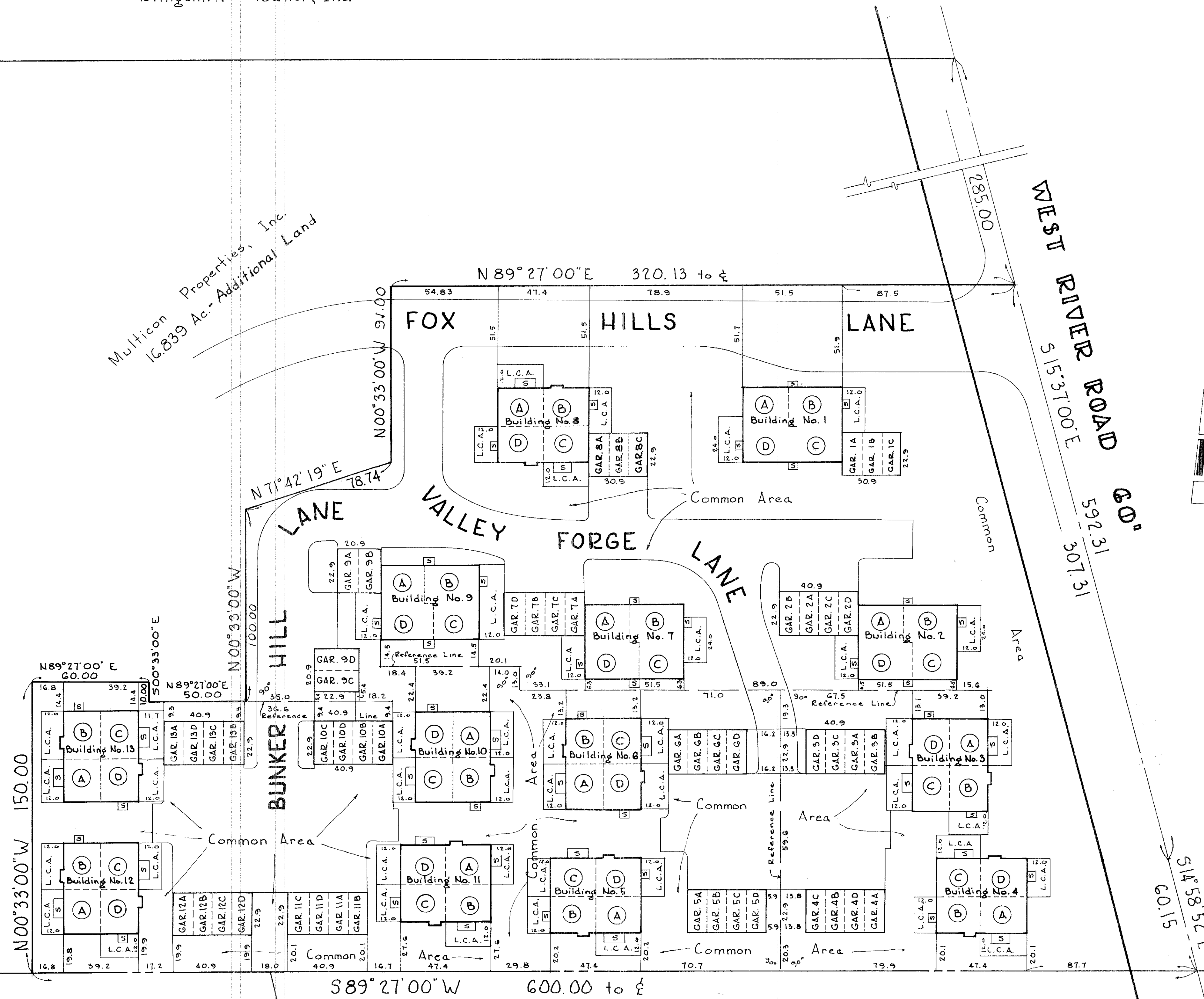
BRUN, PRENOSIL & ASSOCIATES
ENGINEERS - SURVEYORS CHAGRIN FALLS, O.

PHASE I VILLAGE GREENE CONDOMINIUM EXHIBIT "C"

Situated In The City Of Elyria, County Of Lorain
And State Of Ohio And Known As Being Part
Of Original Elyria Township Lot No. 30,
West Of River.
Containing 3.799 Acres.

Klingshirn - Towner, Inc.

Multicon Properties, Inc.
16,839 Ac.- Additional Land



O.L. 30
O.L. 29

The Orlean Company

S 89° 27' 00" W 600.00 to E

Ralph Richards, Alma B. Veres, Aaron E. Richards

BUILDING NO.	UNIT	ELEVATION (U.S.G.S.)			
		FIN. 1 ST FLOOR	FIN. 1 ST FLR. CEIL	FIN. 2 ND FLOOR	FIN. 2 ND FLR. CEIL
1	A & C	700.2	—	710.0	717.4
1	B & D	700.2	708.2	—	—
2	A & C	702.9	—	712.7	720.1
2	B & D	702.9	710.9	—	—
3	A, B, C, D	702.6	710.6	712.4	719.8
4	A, B, C, D	702.8	710.8	712.6	720.0
5	A, B, C, D	701.5	709.5	711.3	718.7
6	A, B, C, D	701.3	709.3	711.1	718.5
7	A & C	700.9	—	710.7	718.1
7	B & D	700.9	708.9	—	—
8	A, B, C, D	699.8	707.8	709.6	717.0
9	A & C	700.5	—	710.3	717.7
9	B & D	700.5	708.5	—	—
10	A, B, C, D	701.0	709.0	710.8	718.2
11	A, B, C, D	701.4	709.4	711.2	718.6
12	A, B, C, D	700.6	708.6	710.4	717.8
13	A, B, C, D	700.4	708.4	710.2	717.6

I do hereby certify these drawings show graphically, all the particulars of the buildings of the Village Greene Condominium Phase I, including the layout, location, designation and dimensions of each unit and the common areas and buildings as constructed.

Ramon A. Braun
Professional Engineer No. 27049

I do hereby certify the buildings of the Village Greene Condominium, Phase I, are located as show on these drawings and elevations above sea level are correct and said drawings accurately show the buildings as constructed.

Joseph Prenail
Reg. Surveyor No. 5390

Note: "L.C.A." Denotes "Limited Common Area"
"S" Denotes "Stoop"

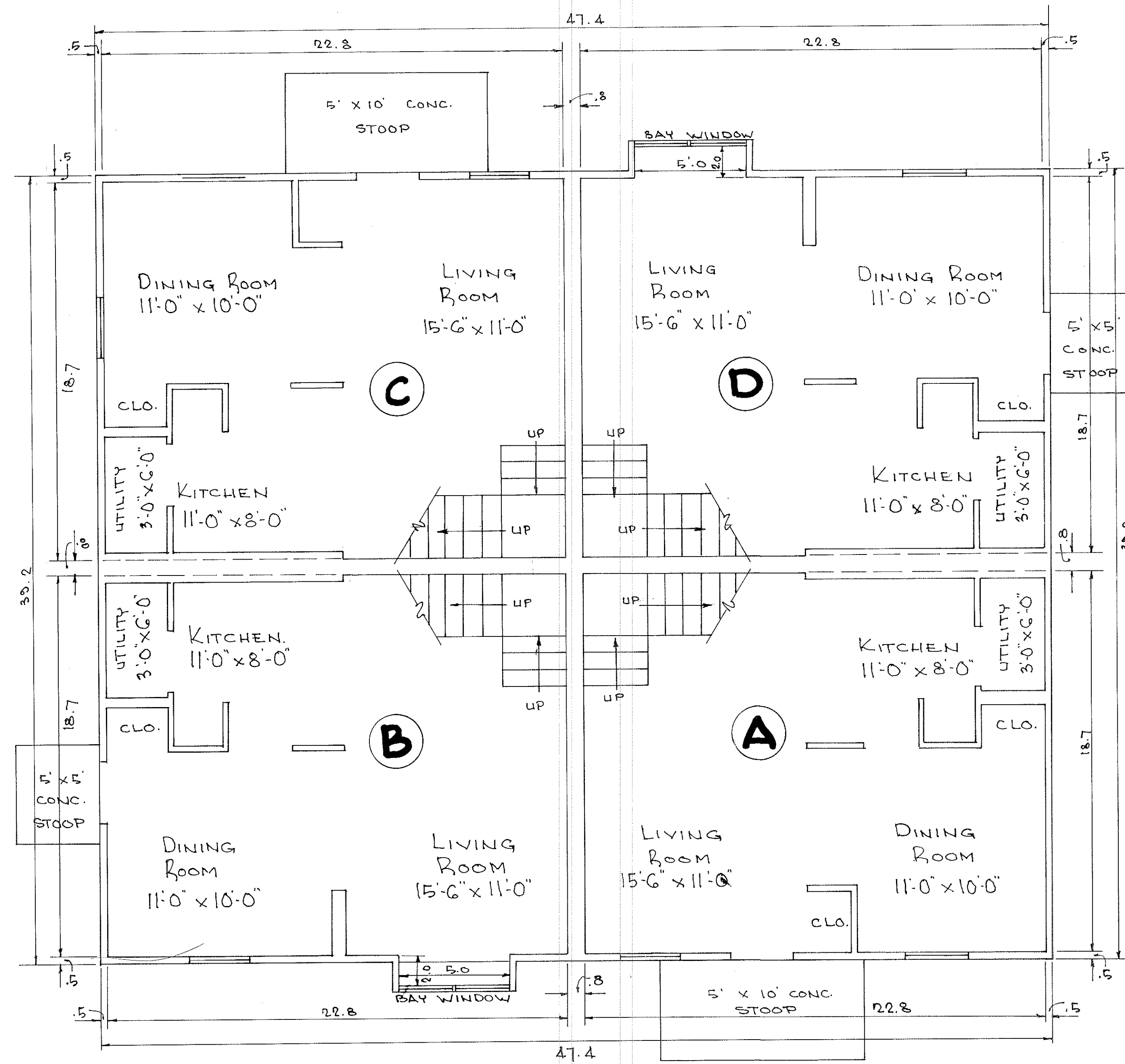
TRANSFERRED
IN COMPLIANCE WITH SEC. 5519
OHIO REV. CODE
NOV 13 1972
Julian A. Pijan
AUDITOR

VILLAGE GREENE CONDOMINIUM
PHASE I,
EXHIBIT "C"

LOCATION PLAT

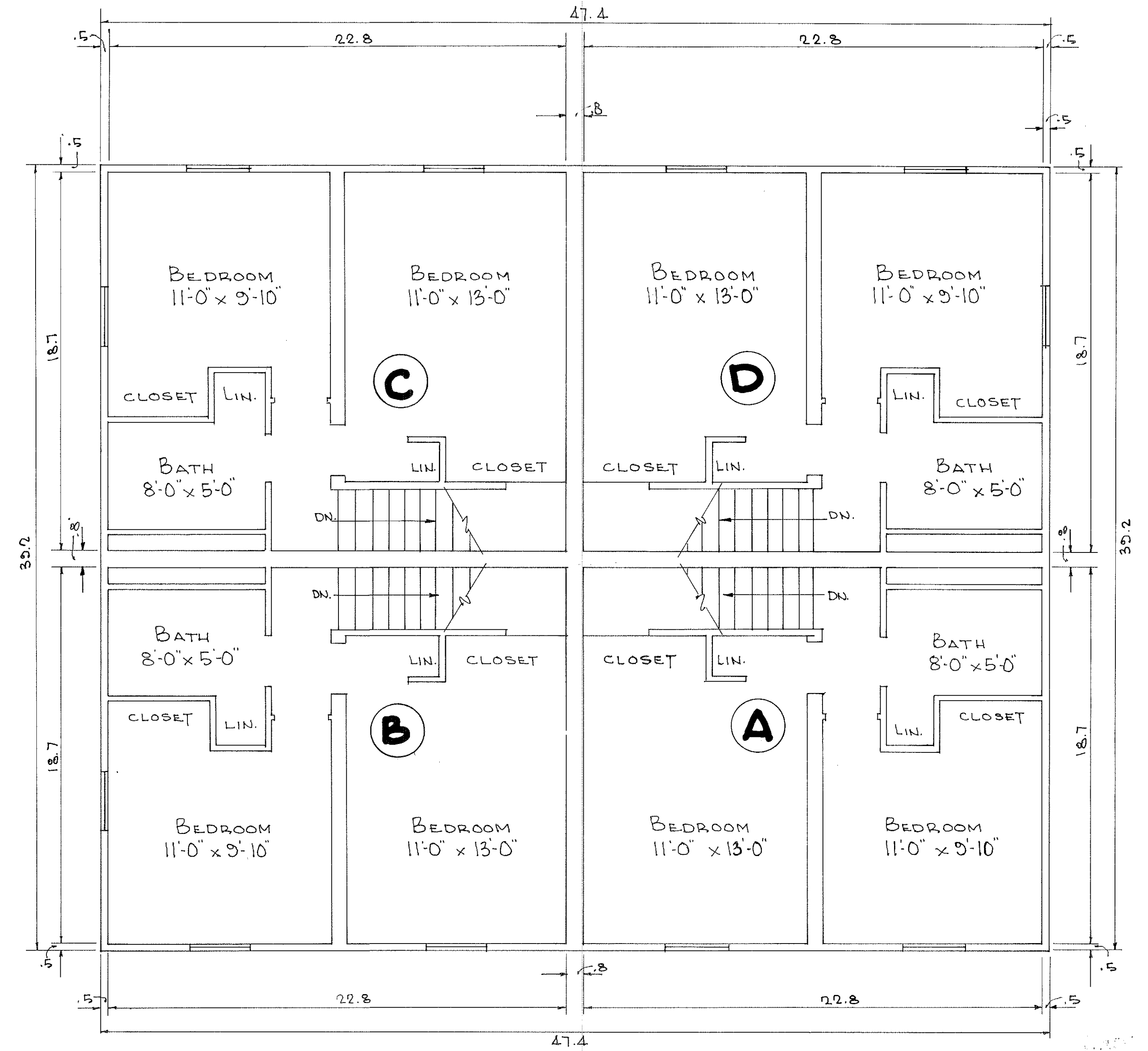
SCALE 1"=30' OCT, 1972 SHEET 1 OF 3

BRAUN, PRENAIL & ASSOCIATES
ENGINEERS-SURVEYORS CHAGRIN FALLS, O.



TYPICAL FIRST FLOOR PLAN FOR
 UNITS A, B, C & D
 IN BUILDINGS 3, 4, 5, 6, 8, 10, 11, 12, 13

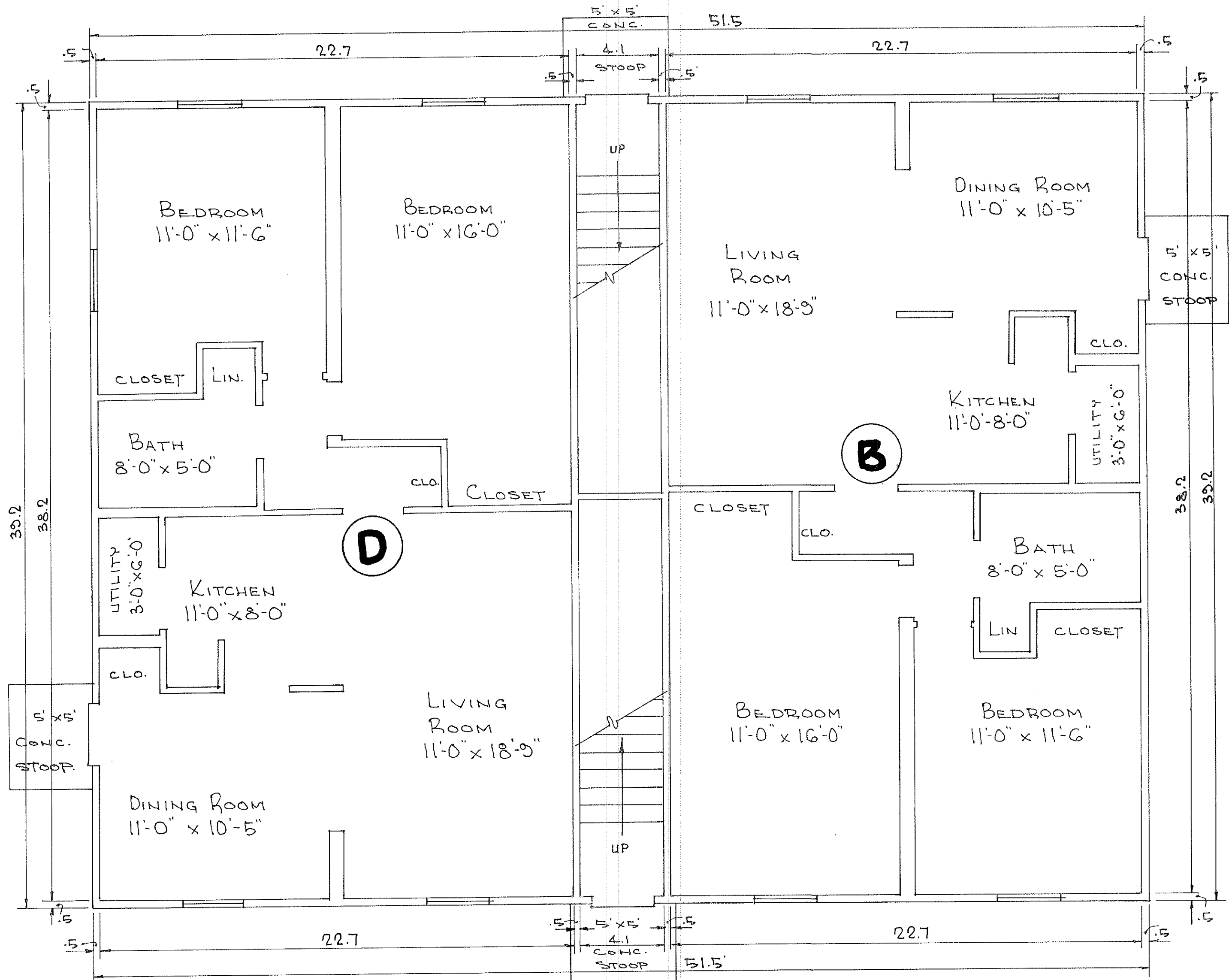
Units "A", "B", "C", & "D" contain
 426 sq. ft. on each floor.



TYPICAL SECOND FLOOR PLAN FOR
 UNITS A, B, C & D
 IN BUILDINGS 3, 4, 5, 6, 8, 10, 11, 12, 13

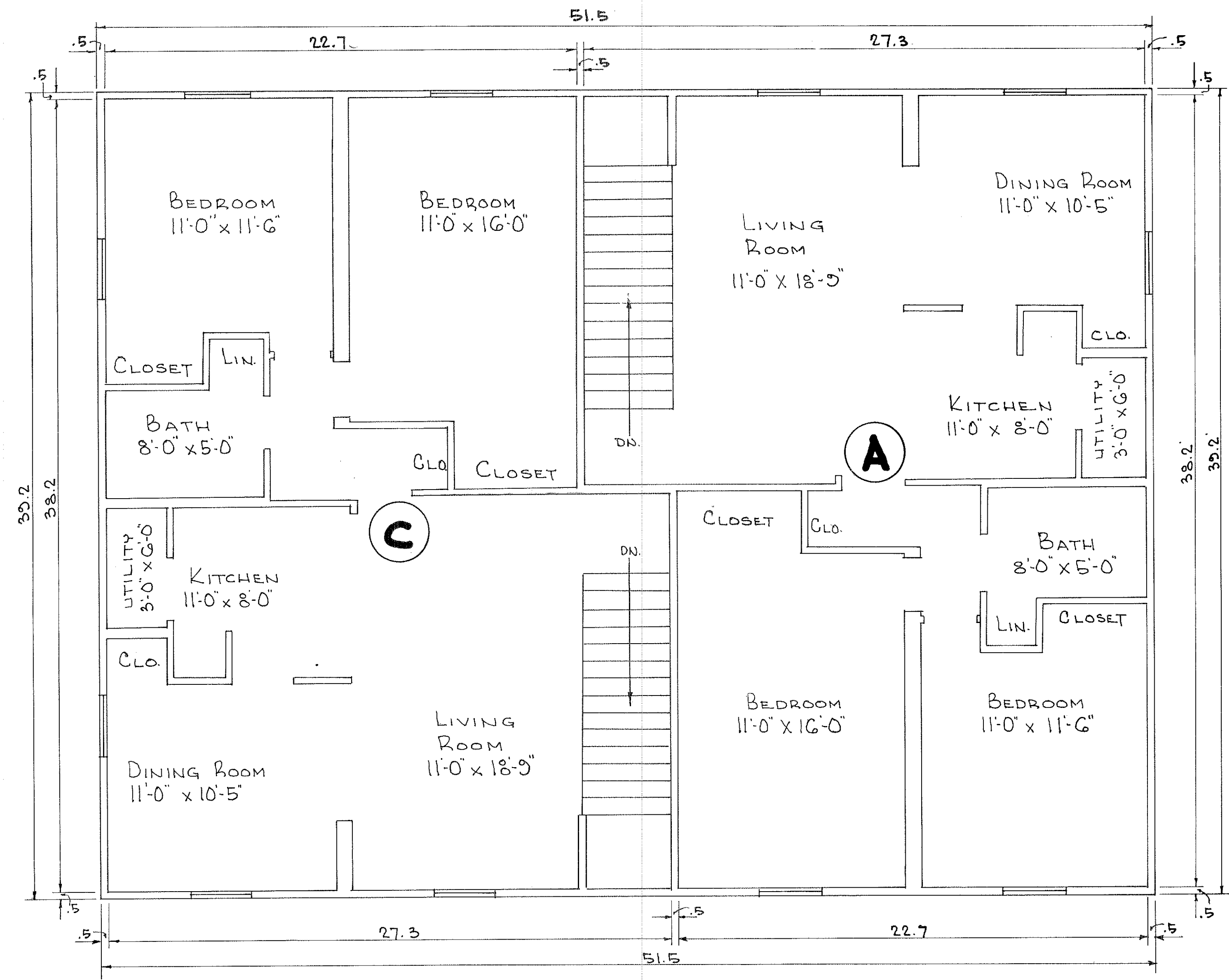
TRANSFERRED
 IN COMPLIANCE WITH SEC. 319.332
 OHIO REV. CODE
 NOV 13 1972
 Julian A. Pigo
 AUC. 702

VILLAGE GREEN CONDOMINIUM
 PHASE "A"
 EXHIBIT "A"
**FIRST & SECOND FLOOR
 PLAN OF TWO FLOOR
 UNITS**
 SCALE: 1/4" = 1'-0" MAY, 1972 SHEET 2 OF 3
 BRAUN, PRENOSIL & ASSOCIATES
 ENGINEERS-SURVEYORS CHAGRIN FALLS, O.



TYPICAL FIRST FLOOR PLAN FOR UNITS "B" & "D" IN BUILDINGS 1, 2, 7 & 9

Units "B" & "D" on 1st floor contain 867 sq. ft.



TYPICAL SECOND FLOOR PLAN FOR UNITS "A" & "C" IN BUILDINGS 1, 2, 7 & 9

Units "A" & "C" on 2nd floor contain 954 sq. ft.

TRANSFERRED
IN COMPLIANCE WITH SEC. 319.02
OHIO REV. CODE
NOV 13 1972
FEE: NONE
Julian A. Papp
AUDITOR

RECEIVED FOR RECORD
AT 2:57 P.M.
NOV 13 1972
RECORDED IN LORAIN
COUNTY RECORDS
PLAT Vol. 27
LEOTA B. MITCHELL
Lorain County Recorder
53-54-53
51.84 Jmd.

VILLAGE GREEN CONDOMINIUM
PHASE II
EXHIBIT "A"
**FIRST & SECOND FLOOR
PLAN OF ONE FLOOR
UNITS**
SCALE: 1/4" = 1'-0" MAY, 1972 SHEET 3 OF 3
BRAUN, PRENOSIL & ASSOCIATES
ENGINEERS-SURVEYORS CHAGRIN FALLS, O

Land title