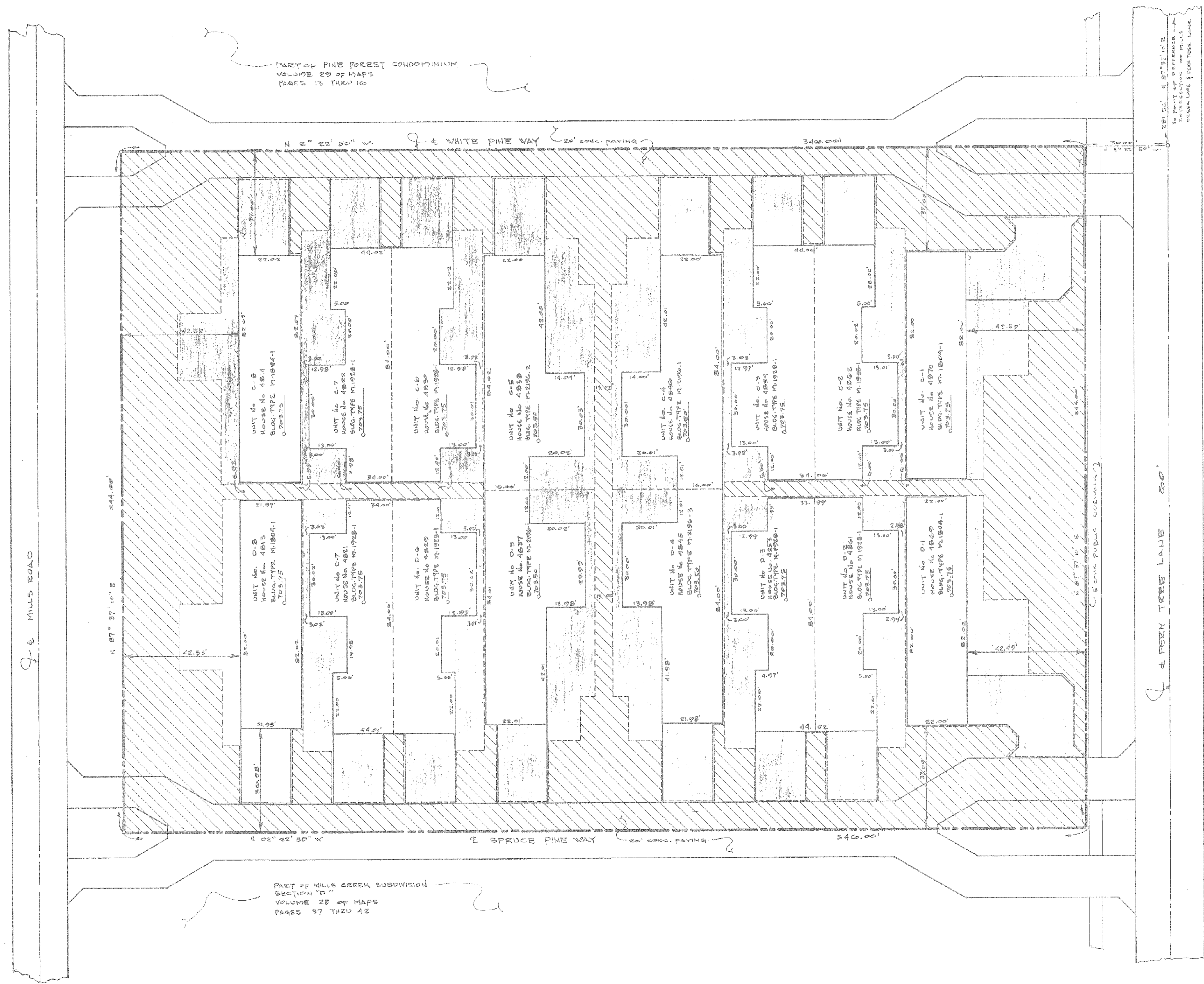


EXHIBIT "A"
 DRAWINGS FOR PINE CONE CONDOMINIUM
 OF
 MILLS CREEK SUBDIVISION, SECTION "D"
 VOLUME 25 OF MAPS. PAGES 37 THRU 42
 SCALE 1"=20' DECEMBER 1973

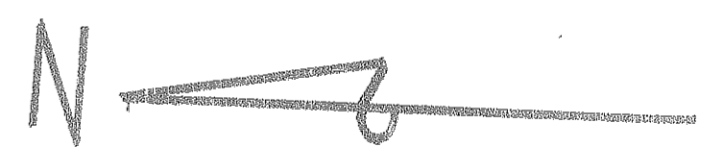


WE, PRESTON R. SPENCER REGISTERED SURVEYOR OHIO 6047 AND EDWARD A. SCHMITT REGISTERED ARCHITECT OHIO 4404 HEREBY CERTIFY THAT THE WITH-IN DRAWINGS FOR PINE CONE CONDOMINIUM AMENAGEMENT (CONSISTING OF PAGES 1/3 THRU 4/4) ACCURATELY SHOW THE BUILDINGS AS CONSTRUCTED



LEGEND

- C.A. - COMMON AREAS AND FACILITIES
- L.C.A. - LIMITED COMMON AREAS AND FACILITIES
- L.C.A. BOUNDARY LINE
- PROPERTY LINE
- UTILITY EASEMENT
- FINISH FLOOR ELEVATION

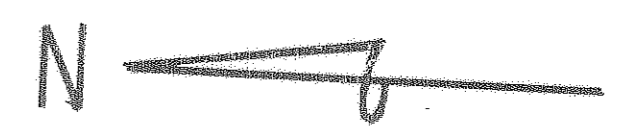
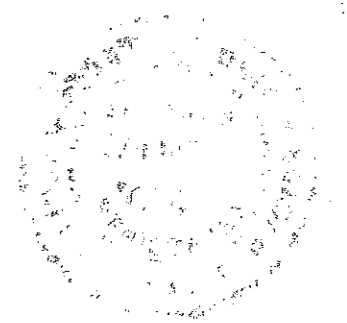
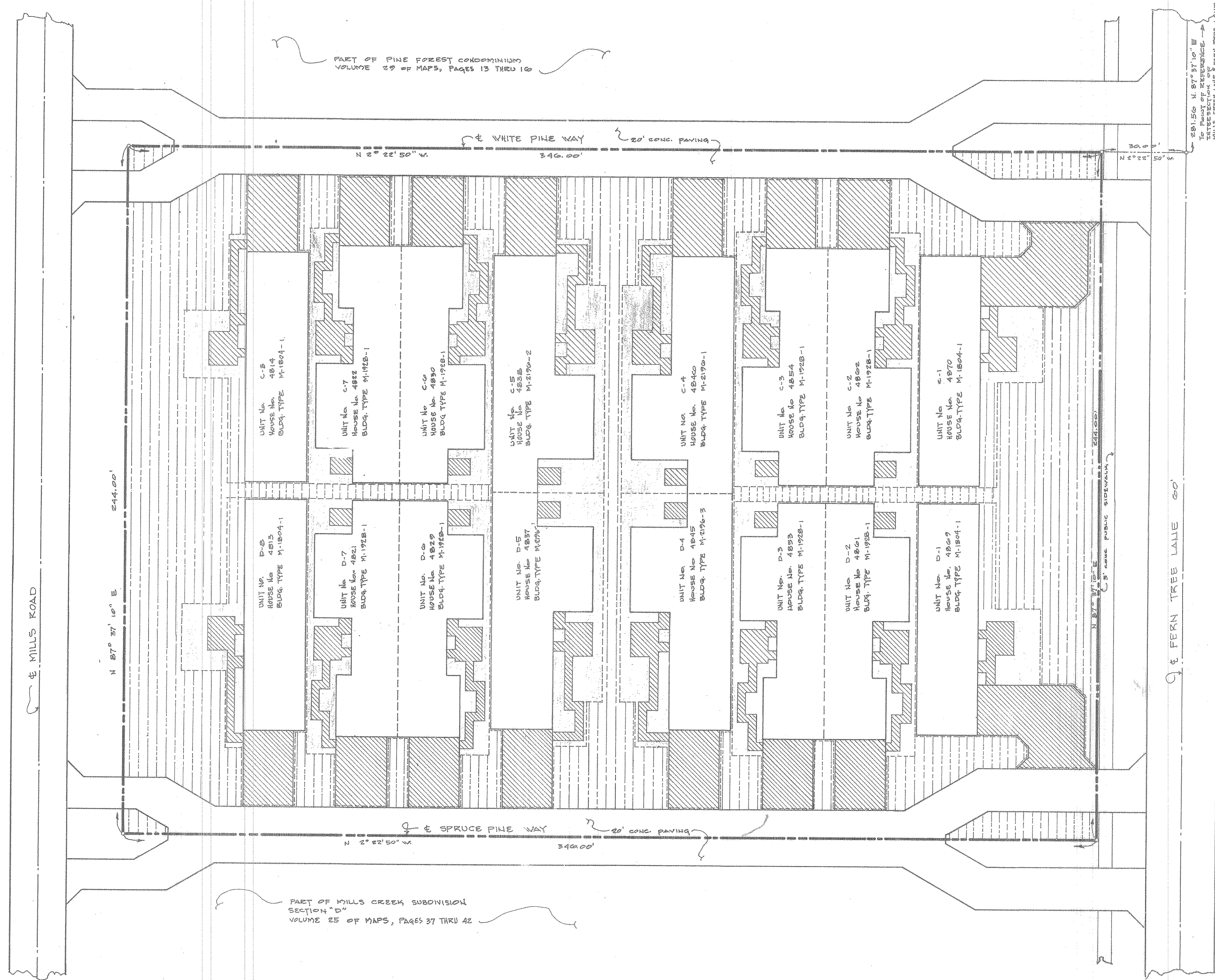


PART OF MILLS CREEK SUBDIVISION, SECTION "D" VOLUME 25 OF MAPS PAGES 37 THRU 42

CONSISTENT
 OF THE RECORDS OF THE
 OHIO REV. C.
 FILE
 BY
 DATE

29/26

EXHIBIT "A"
 DRAWINGS FOR PINE CONE CONDOMINIUM
 OF
 MILLS CREEK SUBDIVISION SECTION "D"
 VOLUME 25 OF MAPS, PAGES 37 THRU 42
 SCALE 1" = 20' 0" DECEMBER 1973



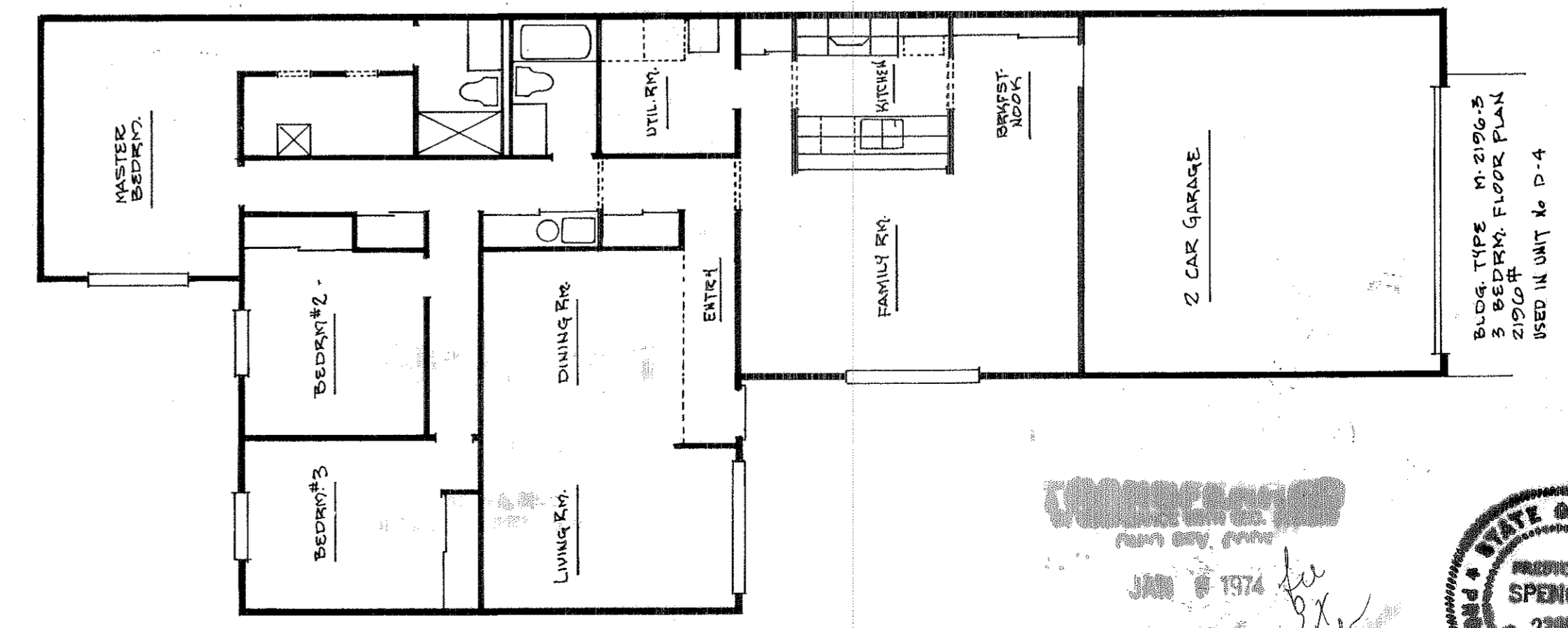
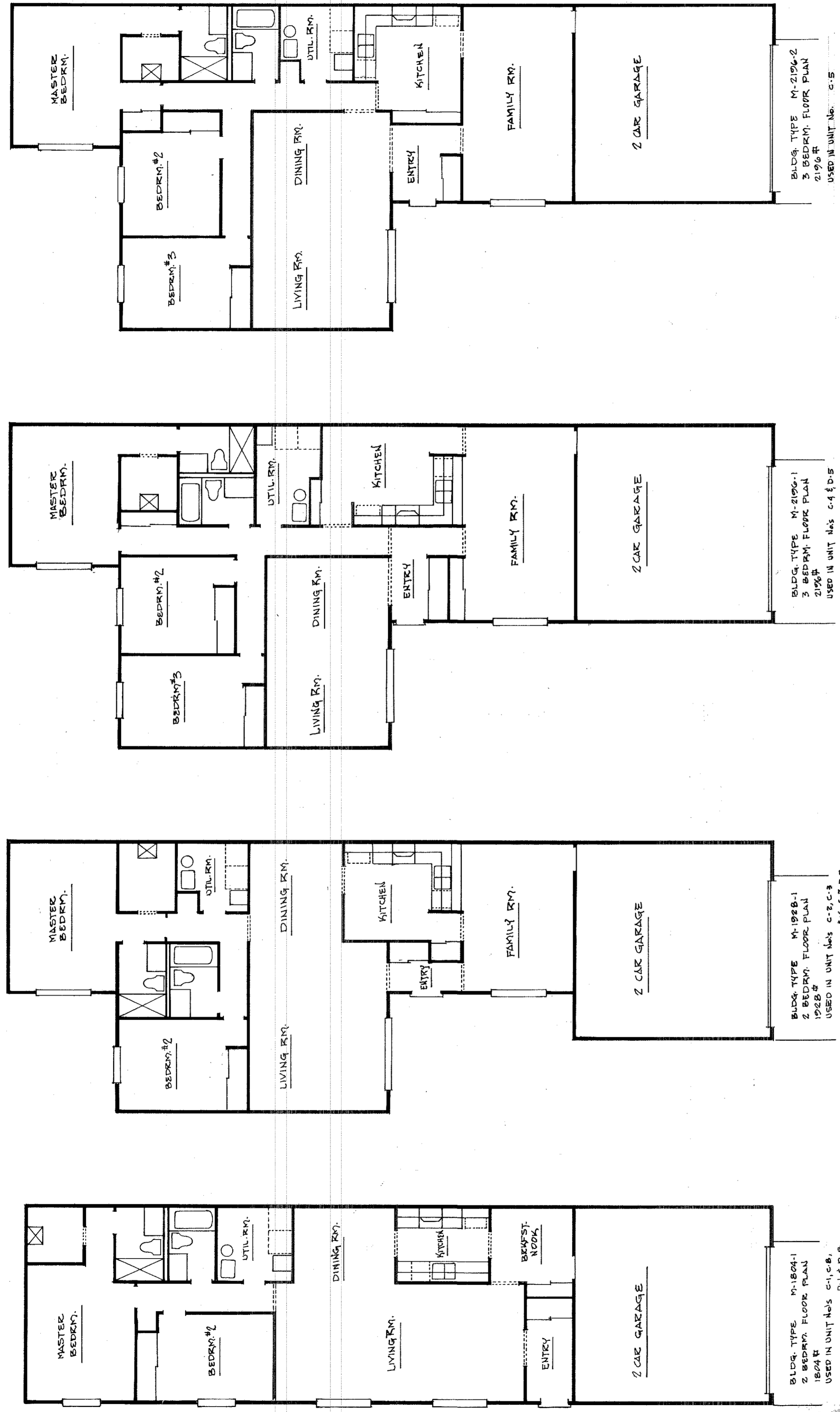
TRANSFERRED
 TO THE REV. CODE
 JAN 8 1974
 JOHN A. WOOD
 SURVEYOR

2
4

29/26

EXHIBIT "A"
PINE CONE CONDOMINIUM
FLOOR PLANS

SCALE 1/8" = 1'-0" DECEMBER 1973



CONSTRUCTION
 JAN 8 1974
 SPENCER

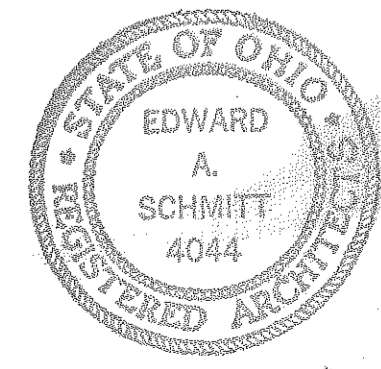
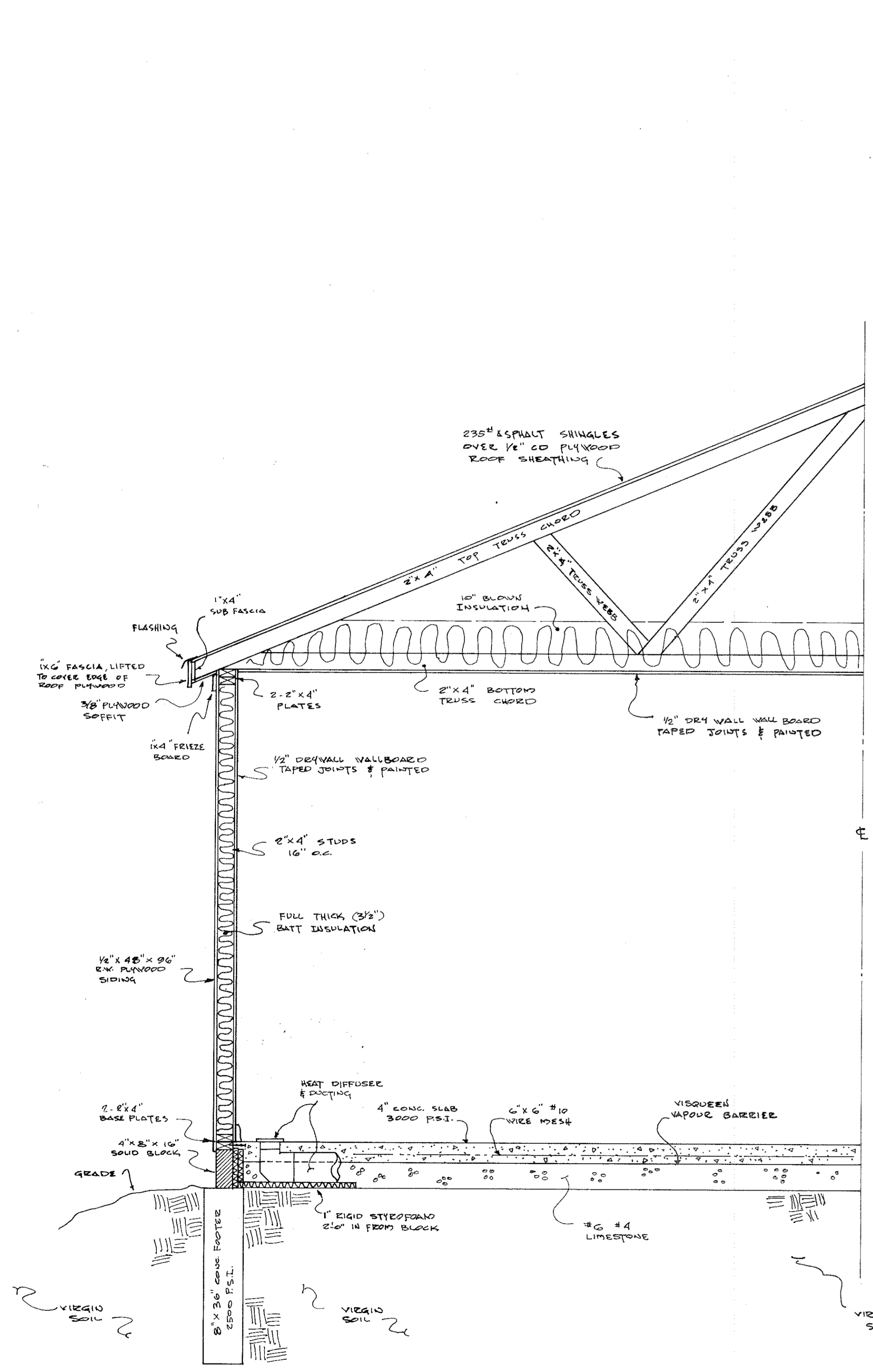
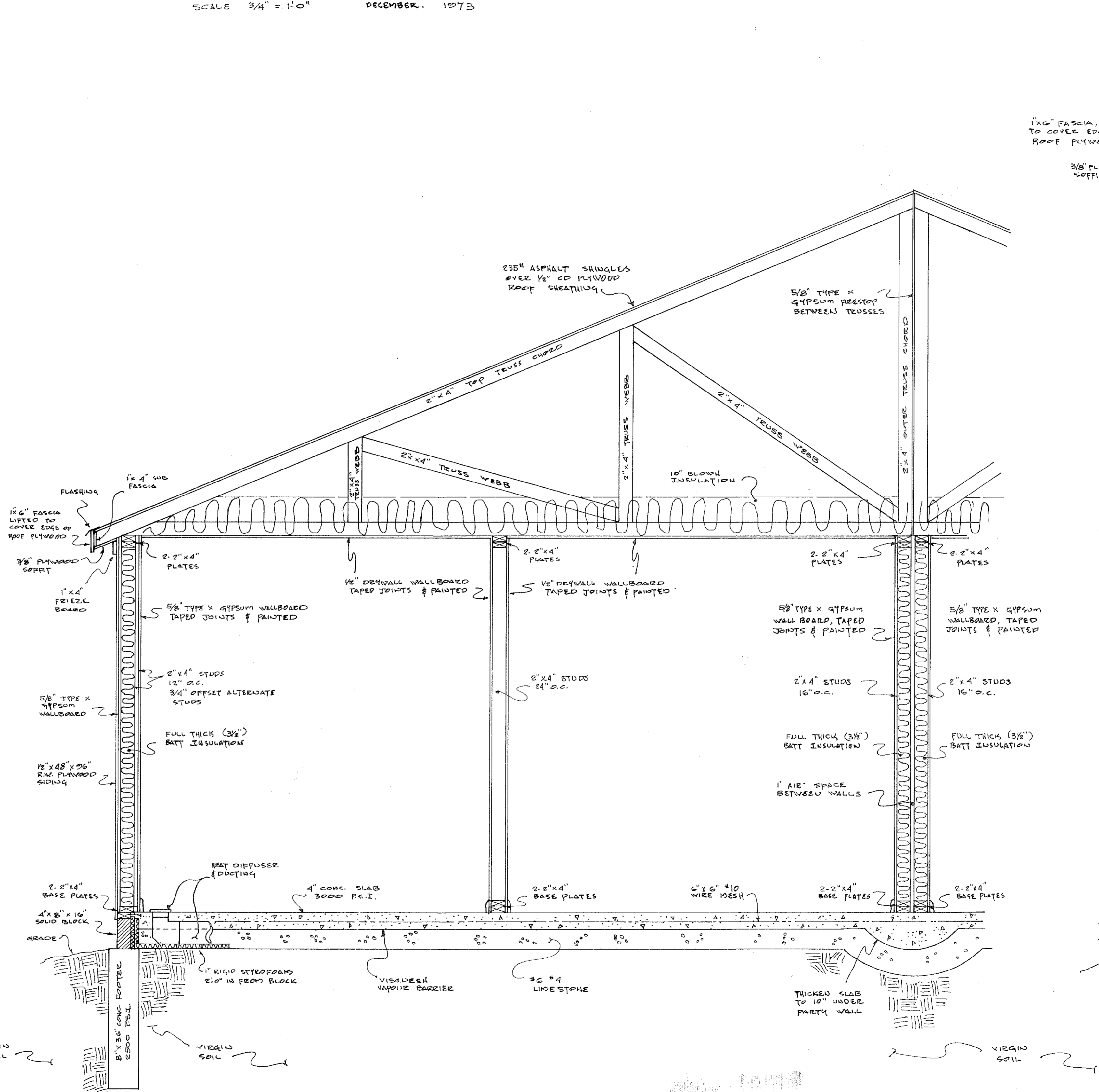


EXHIBIT "A"
PINE CONE CONDOMINIUM
TYPICAL WALL SECTIONS

SCALE 3/4" = 1'-0" DECEMBER, 1973

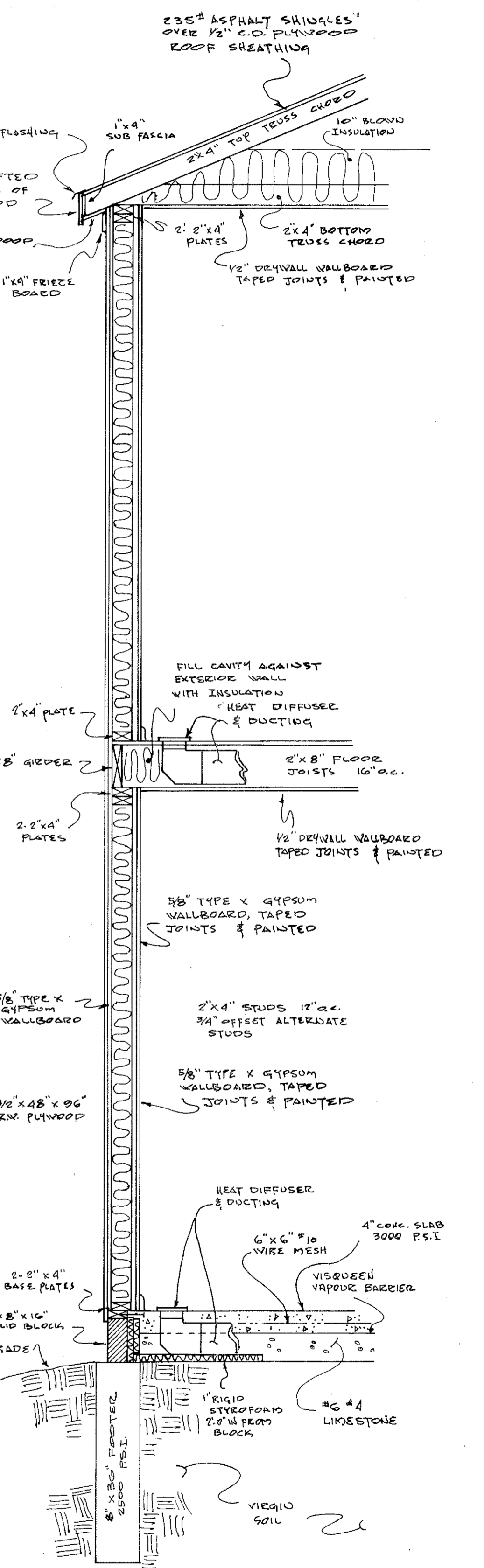


TYPICAL EXTERIOR WALL SECTION



SOUND & FIRE EXTERIOR WALL SECTION

INTERIOR PARTITION WALL SECTION



COMMON PARTY WALL SECTION

2 STORY WALL SECTION

RECORDED AND INDEXED
JAN - 8 1974
RECORDED IN LORAIN COUNTY RECORDS
DOROTHY L. BISEK
LORAIN COUNTY RECORDER

