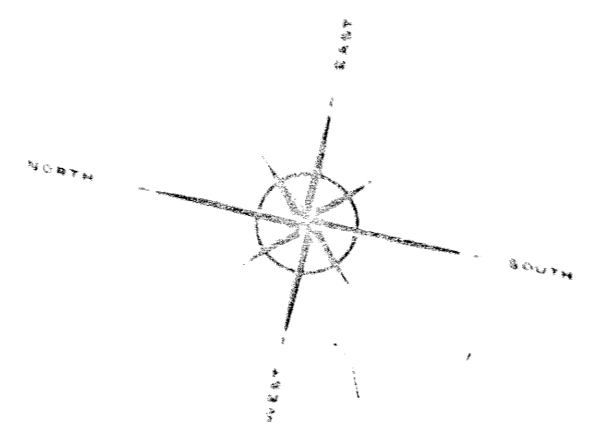


834511

834511



STATEMENT OF CERTIFICATION  
 I HEREBY CERTIFY THAT THE ATTACHED DRAWINGS CORRECTLY REPRESENT THE DIMENSIONS OF THE BUILDINGS AS CONSTRUCTED AND THAT THERE ARE NO ENCROACHMENTS ON ANY ADJUTING PREMISES.

*James H. Schmidt*  
 JAMES H. SCHMIDT  
 REG. SURVEYOR  
 NO. 4006

DENNIS E. & JEAN THOMAS  
 DV 514 P 103

PARCEL NO.	ADDRESS	UNIT	DOLLAR VALUE	% OF TOTAL VALUE
1	R-151	D	17,300	4.01
2	R-151	D	13,800	3.07
3	R-151	D	17,800	4.01
4	R-151	D	17,300	3.90
5	R-151	D	20,100	4.54
6	R-151	D	13,100	2.95
7	R-151	D	13,100	2.95
8	R-151	D	22,850	5.13
9	R-151	D	12,675	2.85
10	R-151	D	20,100	4.54
11	R-151	D	20,100	4.54
12	R-151	D	20,100	4.54
13	R-151	D	20,100	4.54
14	R-151	D	20,100	4.54
15	R-151	D	20,100	4.54
16	R-151	D	20,100	4.54
17	R-151	D	20,100	4.54
18	R-151	D	20,100	4.54
19	R-151	D	20,100	4.54
20	R-151	D	20,100	4.54
21	R-151	D	20,100	4.54
22	R-151	D	20,100	4.54
23	R-151	D	20,100	4.54
24	R-151	D	20,100	4.54
25	R-151	D	20,100	4.54
26	R-151	D	20,100	4.54
27	R-151	D	20,100	4.54
28	R-151	D	20,100	4.54
29	R-151	D	20,100	4.54
30	R-151	D	20,100	4.54
31	R-151	D	20,100	4.54
32	R-151	D	20,100	4.54
33	R-151	D	20,100	4.54
34	R-151	D	20,100	4.54
35	R-151	D	20,100	4.54
36	R-151	D	20,100	4.54
37	R-151	D	20,100	4.54
38	R-151	D	20,100	4.54
39	R-151	D	20,100	4.54
40	R-151	D	20,100	4.54
41	R-151	D	20,100	4.54
42	R-151	D	20,100	4.54
43	R-151	D	20,100	4.54
44	R-151	D	20,100	4.54
45	R-151	D	20,100	4.54
46	R-151	D	20,100	4.54
47	R-151	D	20,100	4.54
48	R-151	D	20,100	4.54
49	R-151	D	20,100	4.54
50	R-151	D	20,100	4.54
51	R-151	D	20,100	4.54
52	R-151	D	20,100	4.54
53	R-151	D	20,100	4.54
54	R-151	D	20,100	4.54
55	R-151	D	20,100	4.54
56	R-151	D	20,100	4.54
57	R-151	D	20,100	4.54
58	R-151	D	20,100	4.54
59	R-151	D	20,100	4.54
60	R-151	D	20,100	4.54
61	R-151	D	20,100	4.54
62	R-151	D	20,100	4.54
63	R-151	D	20,100	4.54
64	R-151	D	20,100	4.54
65	R-151	D	20,100	4.54
66	R-151	D	20,100	4.54
67	R-151	D	20,100	4.54
68	R-151	D	20,100	4.54
69	R-151	D	20,100	4.54
70	R-151	D	20,100	4.54
71	R-151	D	20,100	4.54
72	R-151	D	20,100	4.54
73	R-151	D	20,100	4.54
74	R-151	D	20,100	4.54
75	R-151	D	20,100	4.54
76	R-151	D	20,100	4.54
77	R-151	D	20,100	4.54
78	R-151	D	20,100	4.54
79	R-151	D	20,100	4.54
80	R-151	D	20,100	4.54
81	R-151	D	20,100	4.54
82	R-151	D	20,100	4.54
83	R-151	D	20,100	4.54
84	R-151	D	20,100	4.54
85	R-151	D	20,100	4.54
86	R-151	D	20,100	4.54
87	R-151	D	20,100	4.54
88	R-151	D	20,100	4.54
89	R-151	D	20,100	4.54
90	R-151	D	20,100	4.54
91	R-151	D	20,100	4.54
92	R-151	D	20,100	4.54
93	R-151	D	20,100	4.54
94	R-151	D	20,100	4.54
95	R-151	D	20,100	4.54
96	R-151	D	20,100	4.54
97	R-151	D	20,100	4.54
98	R-151	D	20,100	4.54
99	R-151	D	20,100	4.54
100	R-151	D	20,100	4.54
TOTAL			424,455	100.00

RECEIVED  
 JUNE 10 1973  
 SURVEYOR'S OFFICE  
 COLUMBUS, OHIO

PARCEL NO.	AREA
1	0.18
2	0.31
3	0.44
4	0.37
5	0.30
6	0.33
7	0.37
8	0.16
9	0.31
10	0.43
11	0.55
12	0.71
13	0.71
14	0.71
15	0.71
16	0.71
17	0.71
18	0.71
19	0.71
20	0.71
21	0.71
22	0.71
23	0.71
24	0.71
25	0.71
26	0.71
27	0.71
28	0.71
29	0.71
30	0.71
31	0.71
32	0.71
33	0.71
34	0.71
35	0.71
36	0.71
37	0.71
38	0.71
39	0.71
40	0.71
41	0.71
42	0.71
43	0.71
44	0.71
45	0.71
46	0.71
47	0.71
48	0.71
49	0.71
50	0.71
51	0.71
52	0.71
53	0.71
54	0.71
55	0.71
56	0.71
57	0.71
58	0.71
59	0.71
60	0.71
61	0.71
62	0.71
63	0.71
64	0.71
65	0.71
66	0.71
67	0.71
68	0.71
69	0.71
70	0.71
71	0.71
72	0.71
73	0.71
74	0.71
75	0.71
76	0.71
77	0.71
78	0.71
79	0.71
80	0.71
81	0.71
82	0.71
83	0.71
84	0.71
85	0.71
86	0.71
87	0.71
88	0.71
89	0.71
90	0.71
91	0.71
92	0.71
93	0.71
94	0.71
95	0.71
96	0.71
97	0.71
98	0.71
99	0.71
100	0.71
TOTAL	4.407
UNSHADED	1.517

BUILDING	ELEV.	ELE.
1	106.10	115.46
2	116.55	115.71
3	110.30	113.74

**EVERGREEN MEADOWS CONDOMINIUM NO. 1**  
 ELYRIA, OHIO

LOCATION: PART OF ORIG. ELYRIA TWP. LOT 3, WEST OF THE BLACK RIVER, CITY OF ELYRIA, CO. OF OHIO

Prepared for: \_\_\_\_\_  
 Drawn by: D. SCHMIDT  
 Checked by: \_\_\_\_\_  
 Date: JUNE, 1973

**SCHMIDT and Associates**  
 Elyria, Ohio  
 Huron, Ohio  
 SURVEYORS and CONSULTANTS in LAND PLANNING

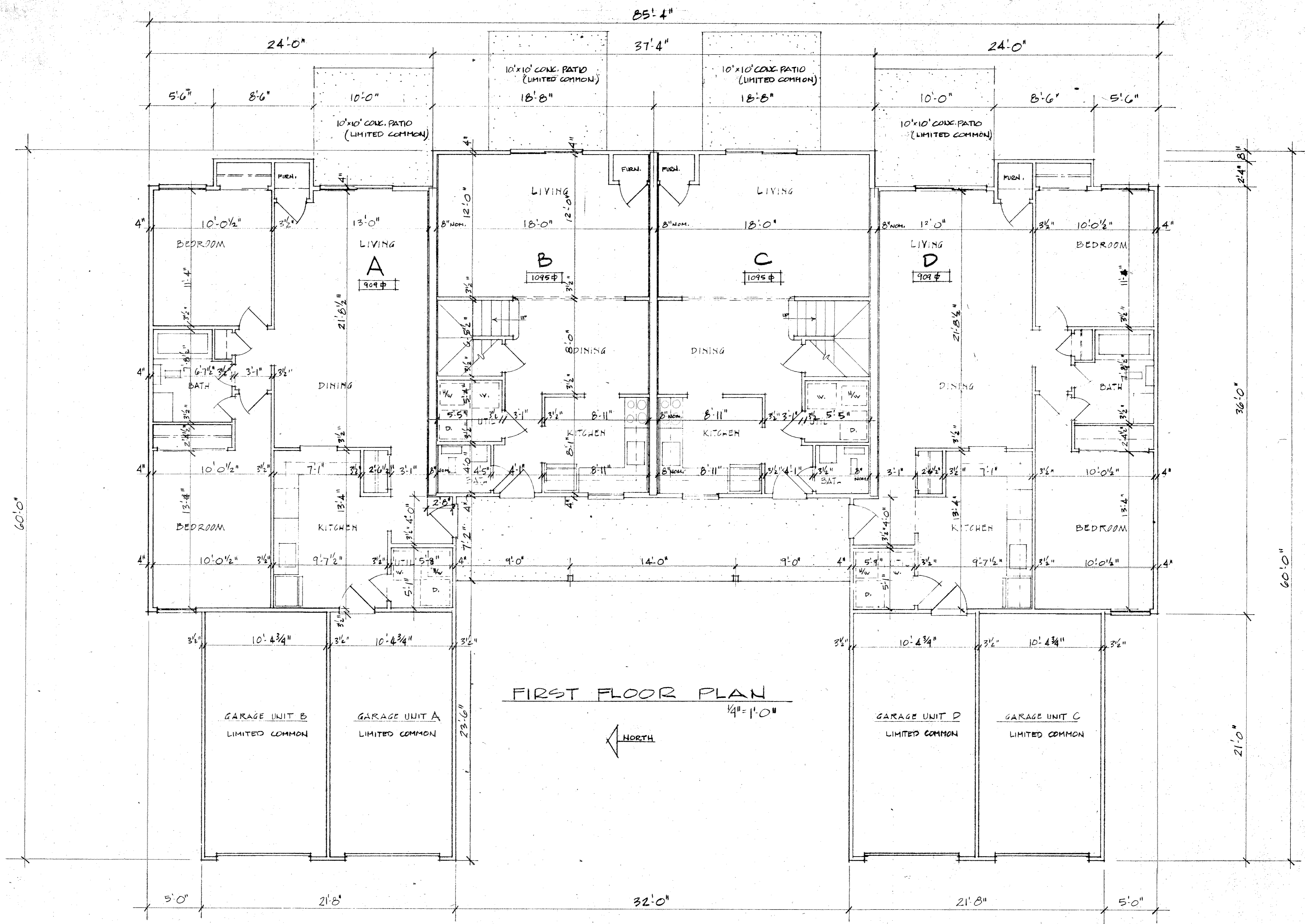
SHEET NO. 109 NO. 4753

*COPY*

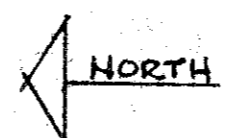
For Ordinance see Rel. Vol. 95 # 834837 Pg. 338  
 For Correction see Ord. Vol. 1084 # 836834 Pg. 224

*SEE 28/58*

*28 41*



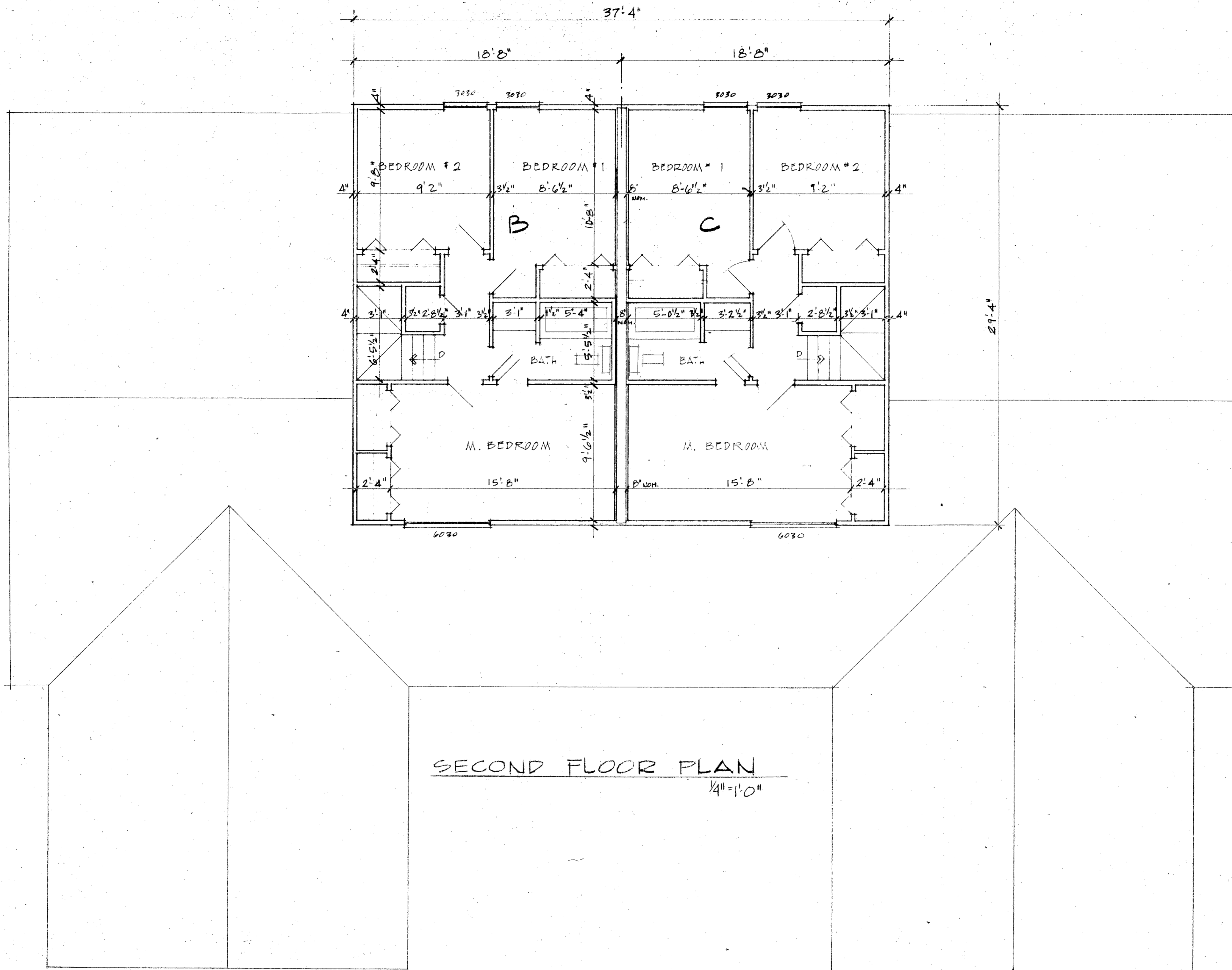
FIRST FLOOR PLAN



STATEMENT OF CERTIFICATION  
 I CERTIFY THAT THE ATTACHED DRAWINGS CORRECTLY REPRESENT THE BUILDINGS AS CONSTRUCTED AND THAT THERE ARE NO ENCROACHMENTS ON ANY ADJUTING PREMISES.

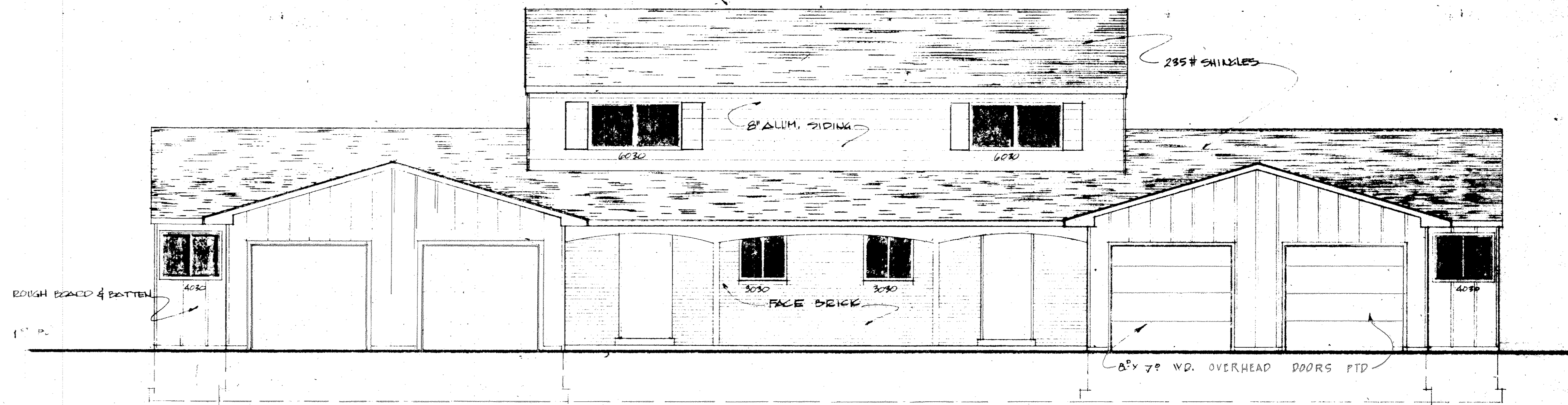
*Richard Gly*  
 RICHARD GLY  
 REGISTERED ARCHITECT

BLDG 6 - UNITS A, B, C, D  
 3751 W RIDGE RD

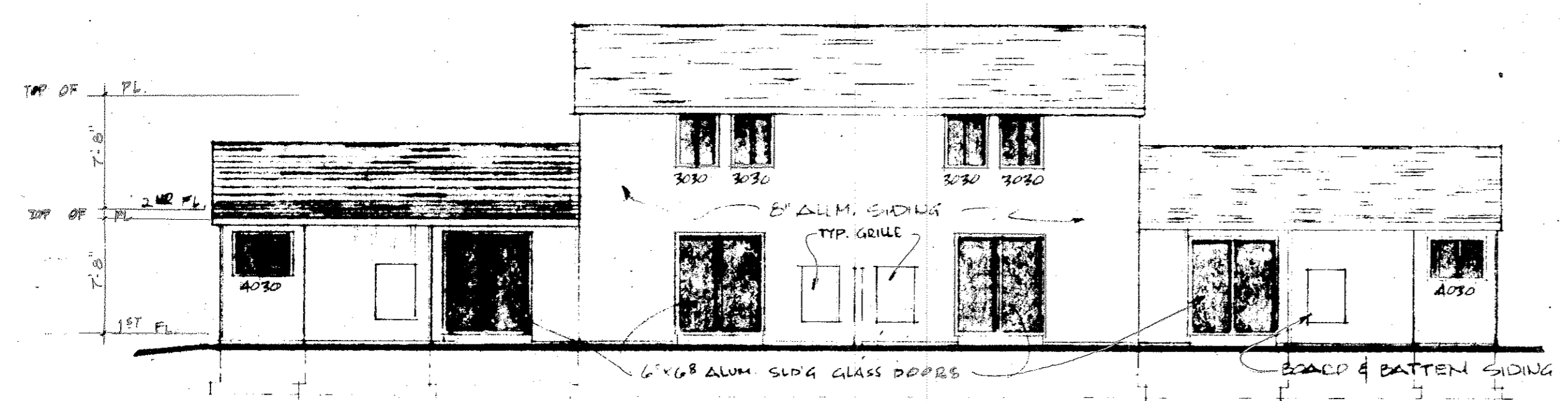


SECOND FLOOR PLAN  
 1/4" = 1'-0"

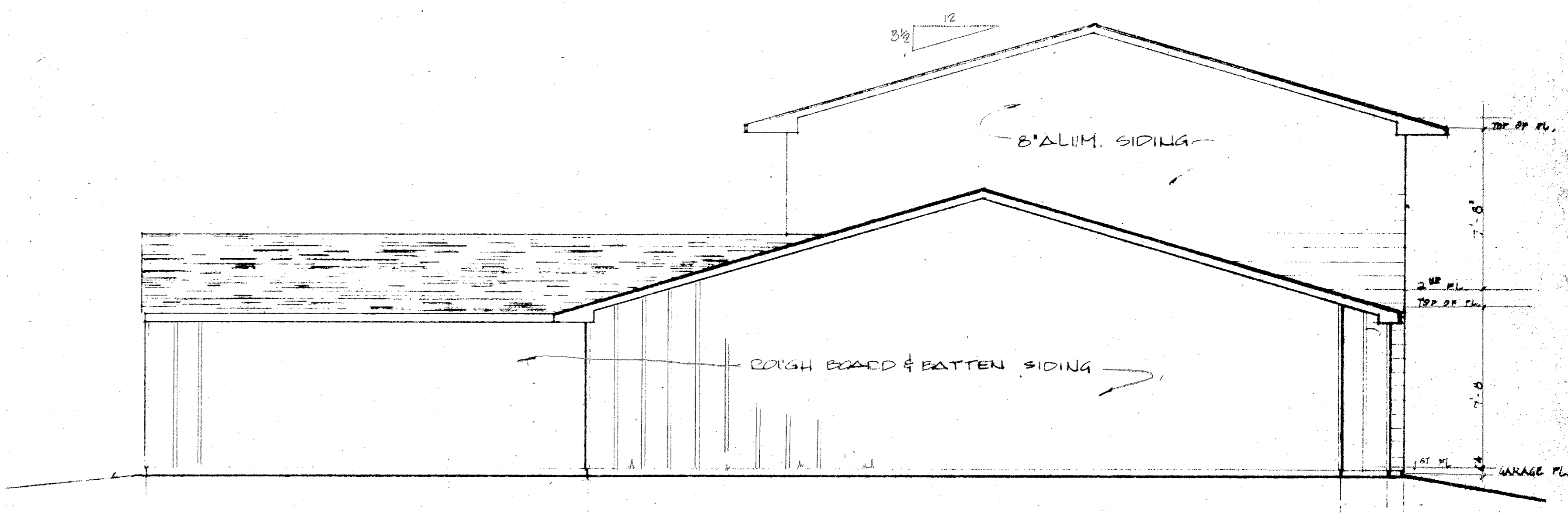
BLDG G - UNITS A,B,C,D  
 8751 W RIDGE RD.



FRONT ELEVATION  
SCALE 1/4" = 1'-0"

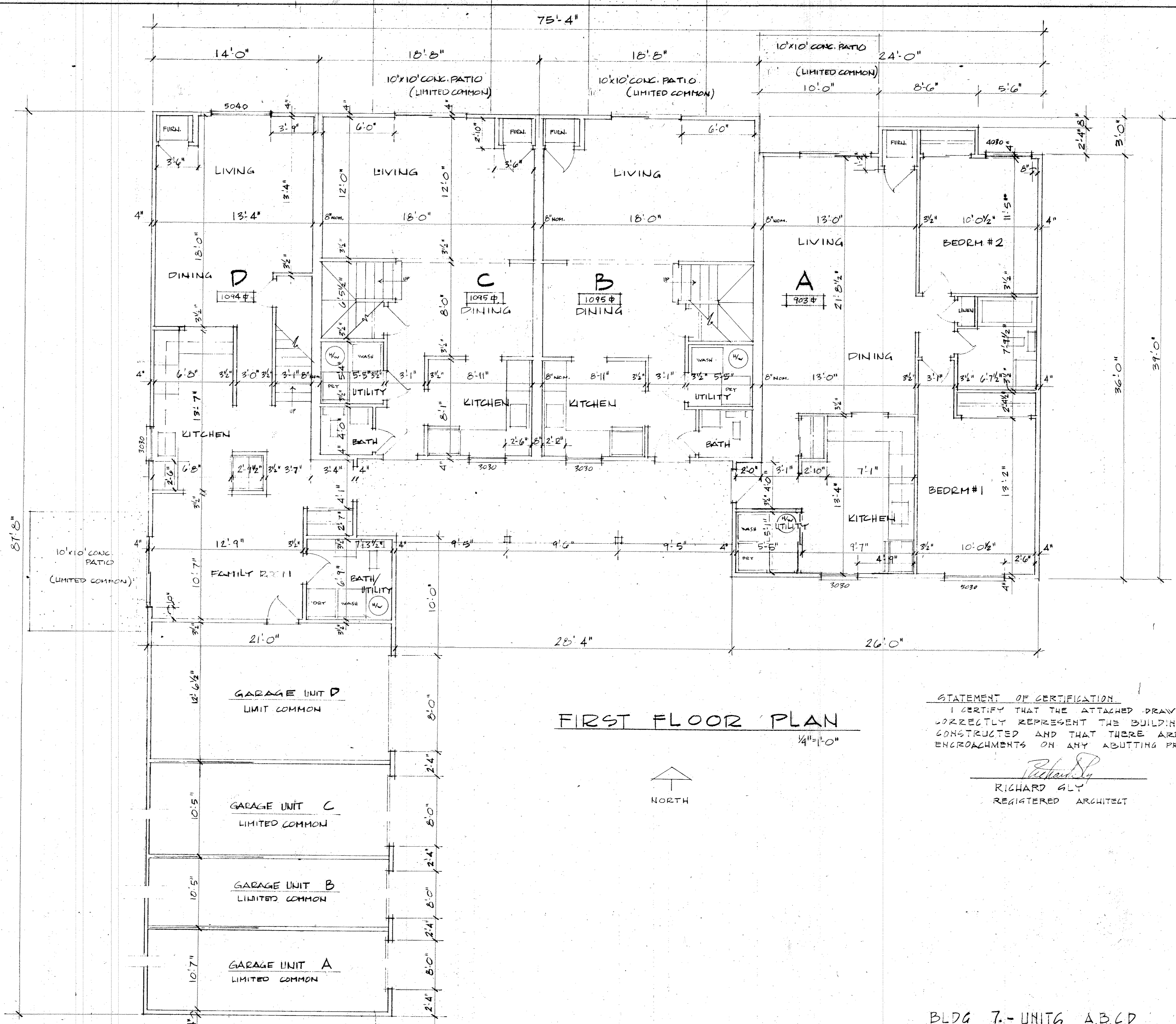


REAR ELEVATION  
SCALE 1/8" = 1'-0"

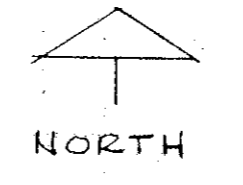


TYPICAL SIDE ELEVATION  
SCALE 1/4" = 1'-0"

BLDG. G - UNITS A,B,C,D  
8751 W. RIDGE RD.



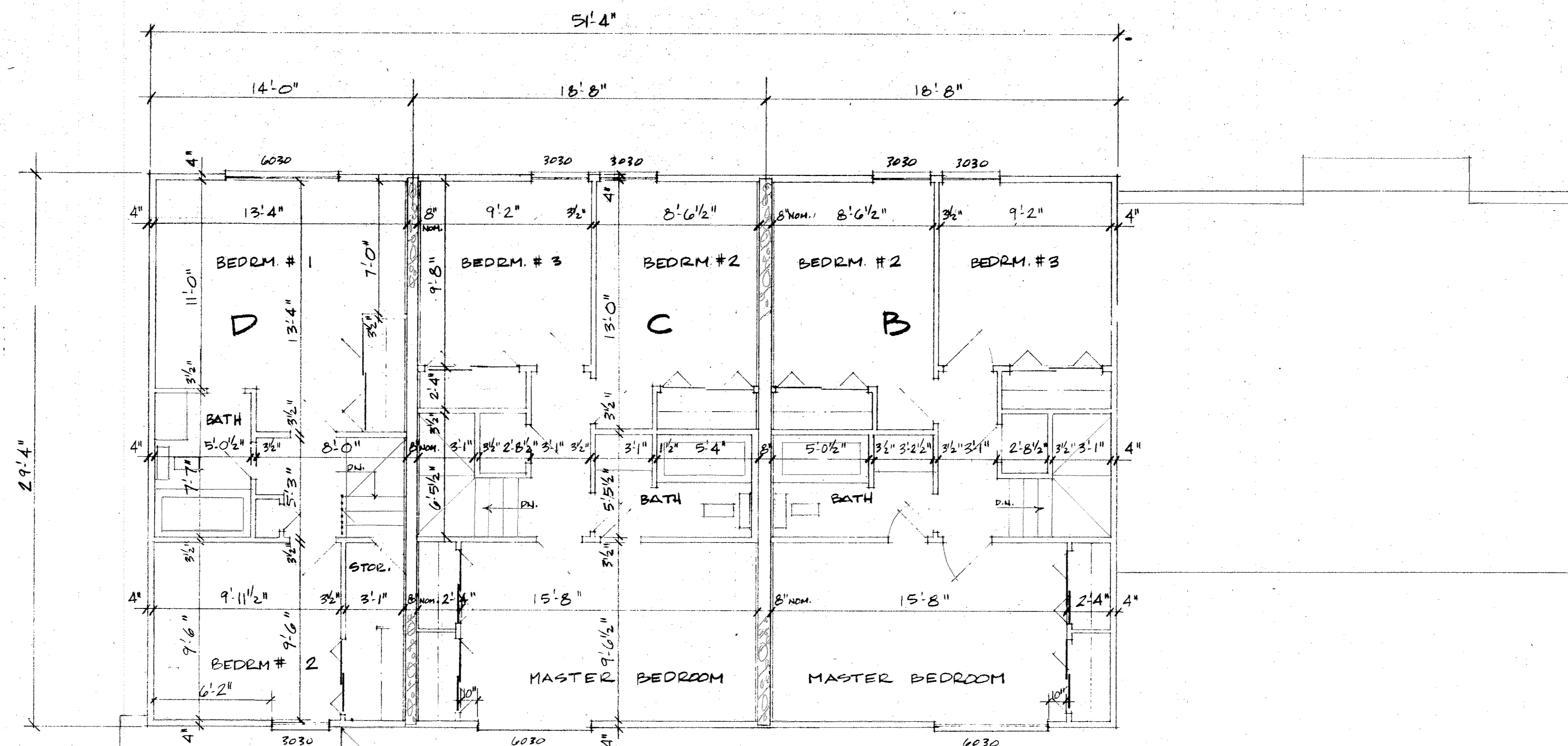
FIRST FLOOR PLAN  
1/4" = 1'-0"



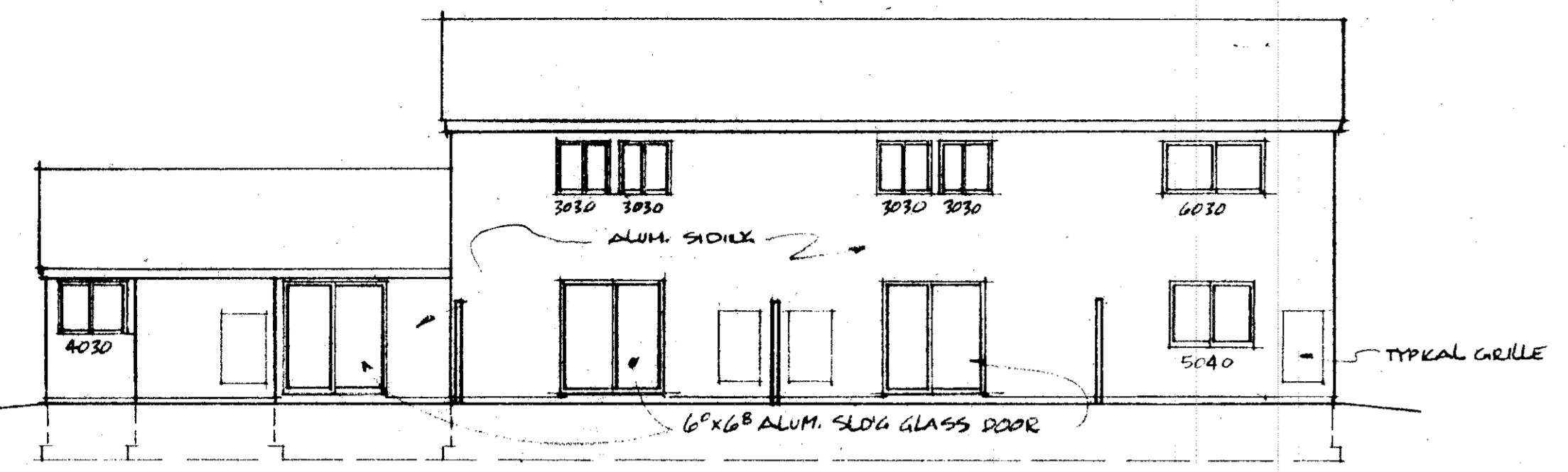
STATEMENT OF CERTIFICATION  
I CERTIFY THAT THE ATTACHED DRAWINGS  
CORRECTLY REPRESENT THE BUILDINGS AS  
CONSTRUCTED AND THAT THERE ARE NO  
ENCROACHMENTS ON ANY ADJUTING PREMISES.

*Richard G. Ly*  
RICHARD G. LY  
REGISTERED ARCHITECT

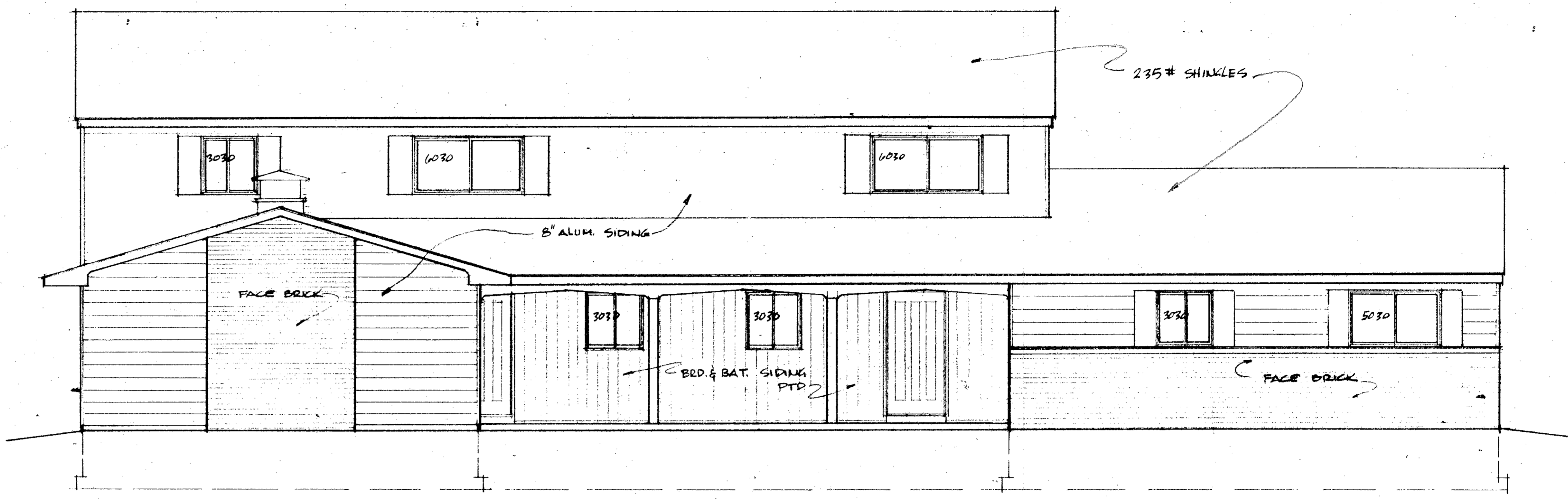
BLDG 7.- UNITG A,B,C,D  
8749 W RIDGE RD



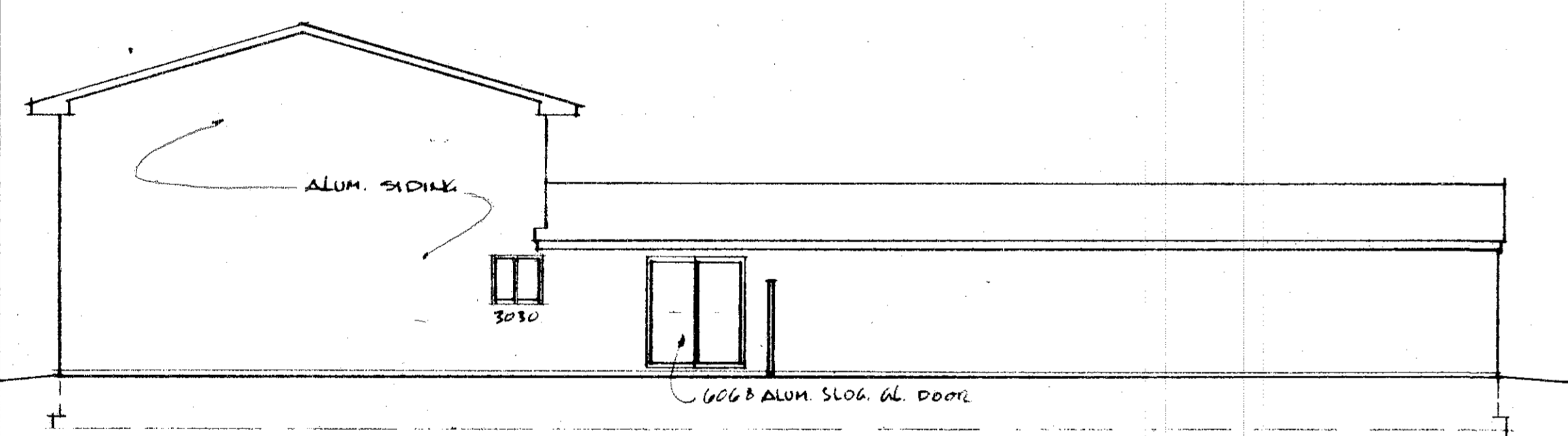
SECOND FLOOR PLAN  
1/4" = 1'-0"



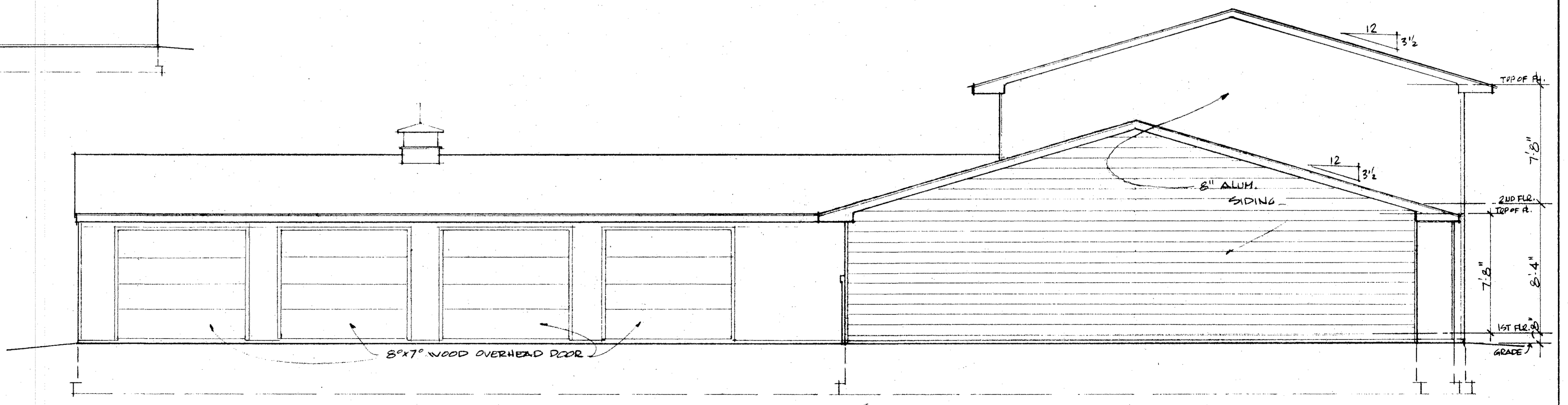
REAR ELEVATION  
1/8"=1'-0"



FRONT ELEVATION  
1/4"=1'-0"

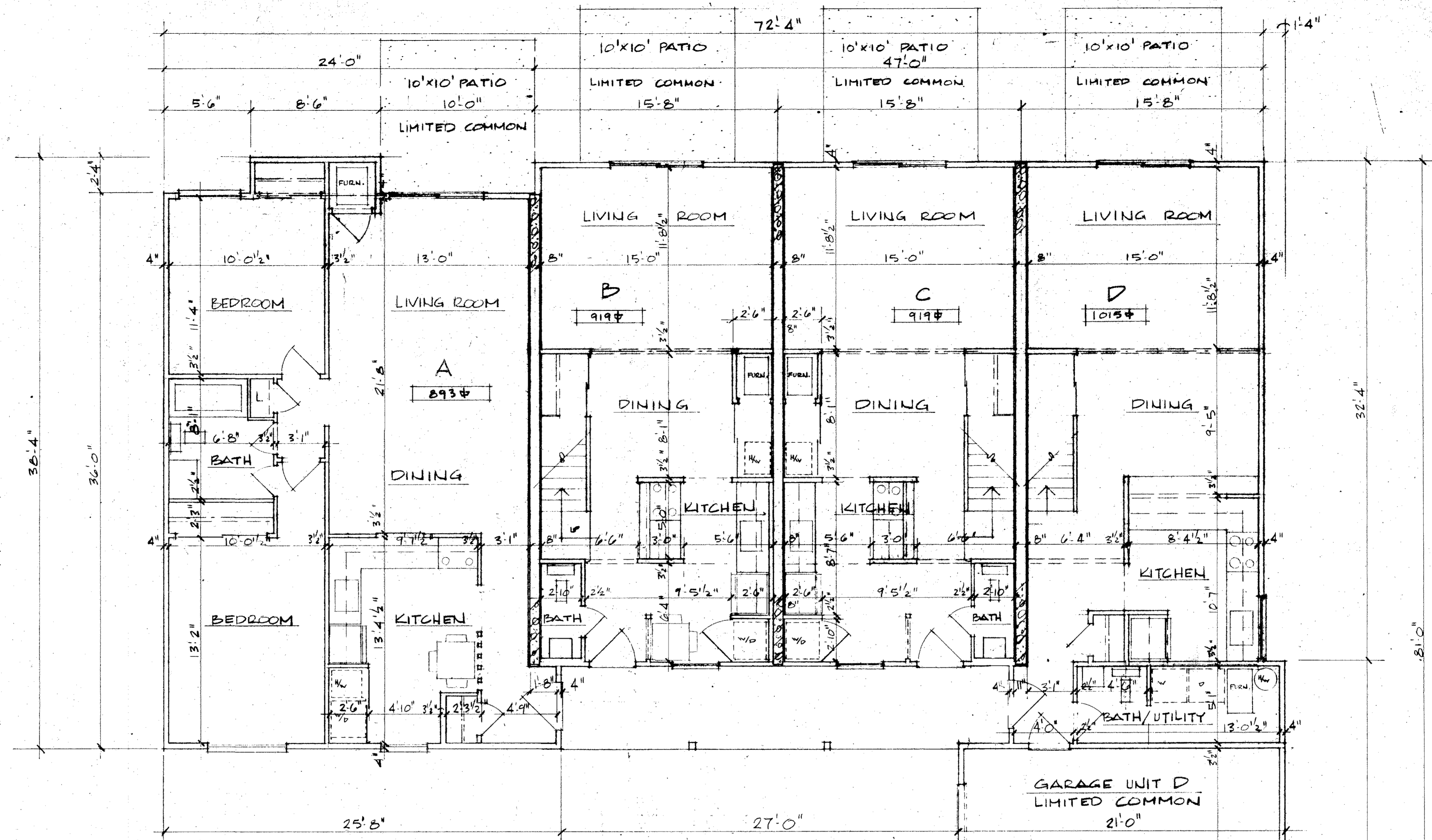


LEFT SIDE ELEVATION  
1/8"=1'-0"



RIGHT SIDE ELEVATION  
1/4"=1'-0"

BLDG 7 - UNITS A,B,C,D,  
8749 W RIDGE RD,



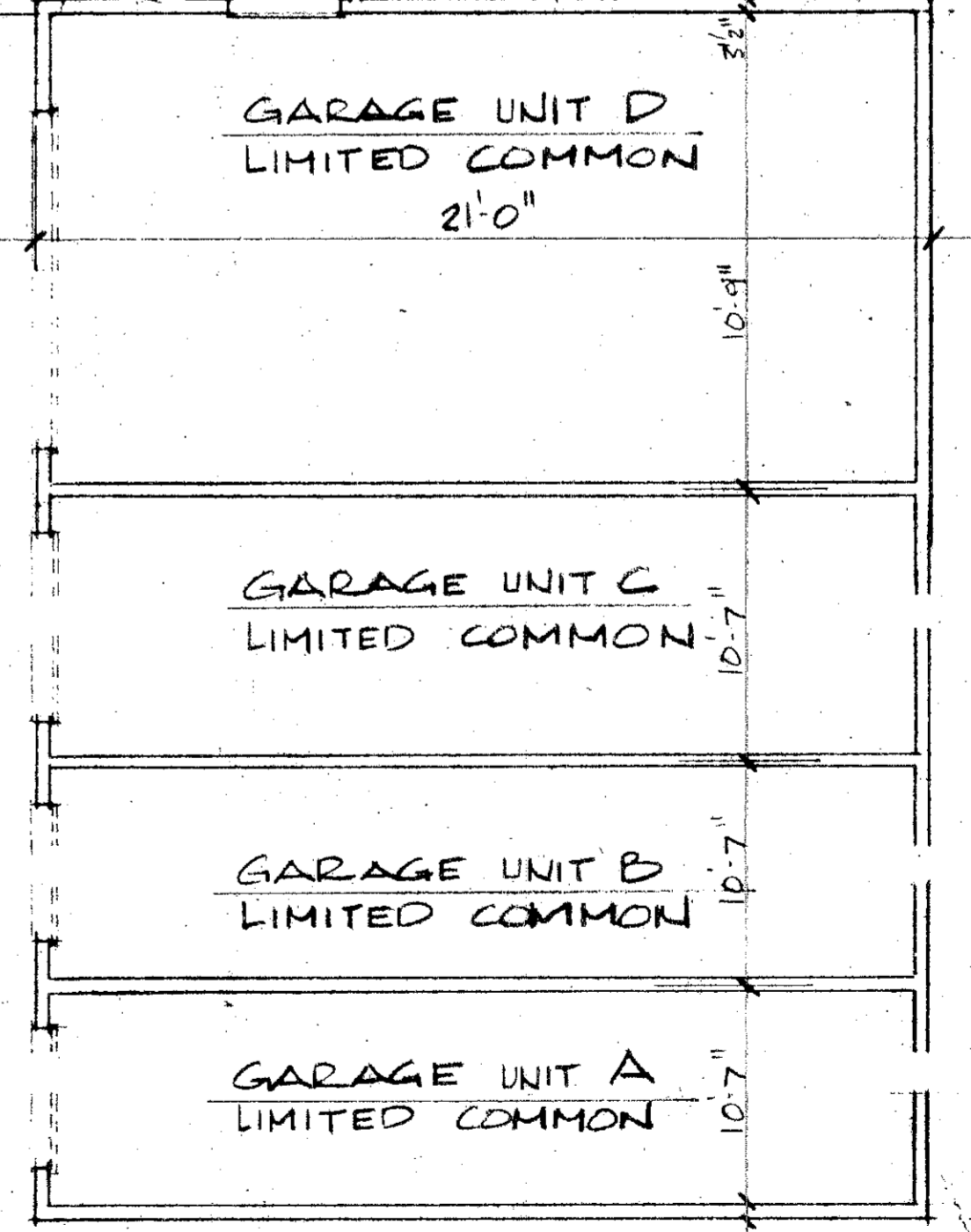
FIRST FLOOR PLAN

SCALE 1/4"=1'-0"



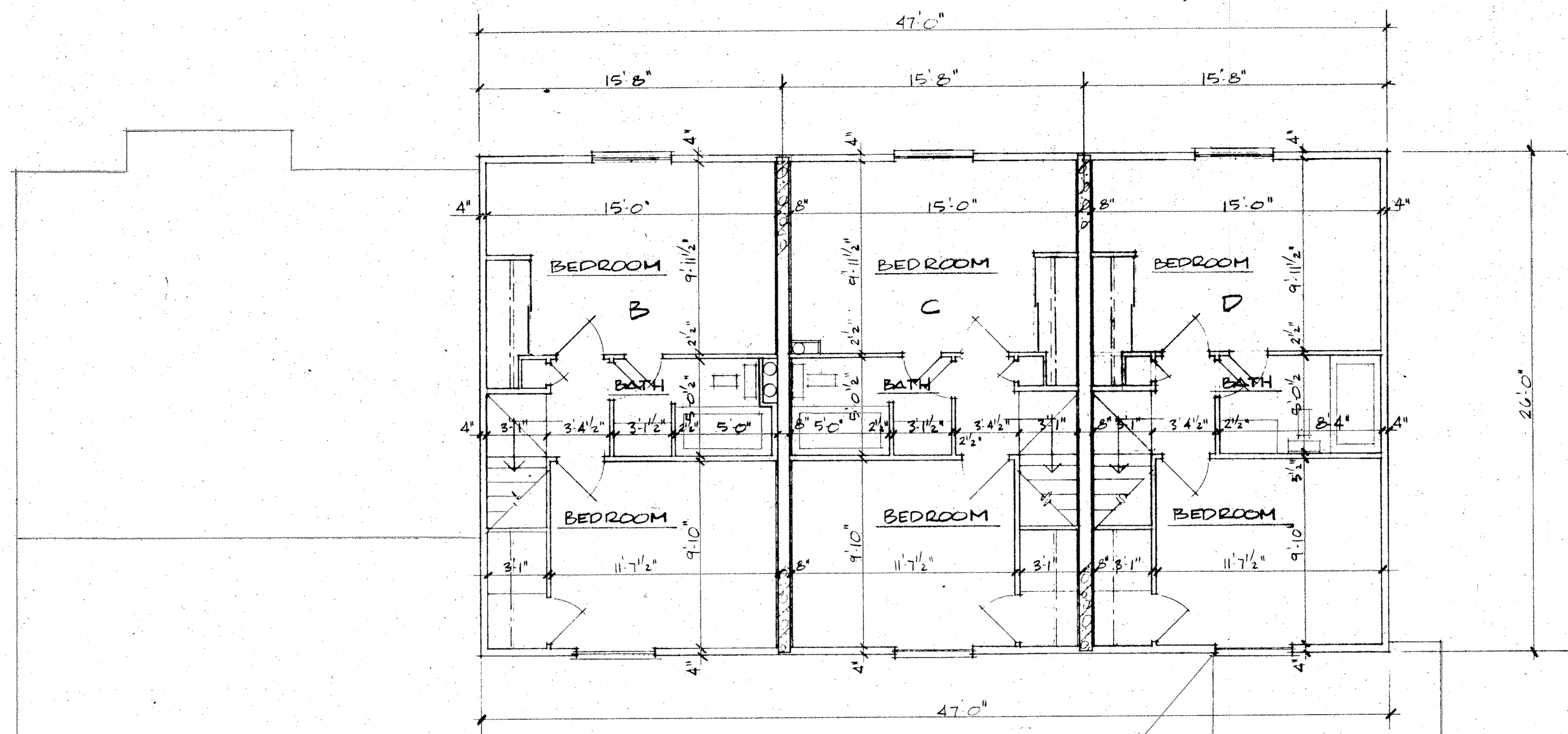
STATEMENT OF CERTIFICATION  
 I CERTIFY THAT THE ATTACHED DRAWINGS  
 CORRECTLY REPRESENT THE BUILDINGS AS  
 CONSTRUCTED AND THAT THERE ARE NO  
 ENCROACHMENTS ON ANY ADJUTING PREMISES.

RICHARD SLY  
 REGISTERED ARCHITECT



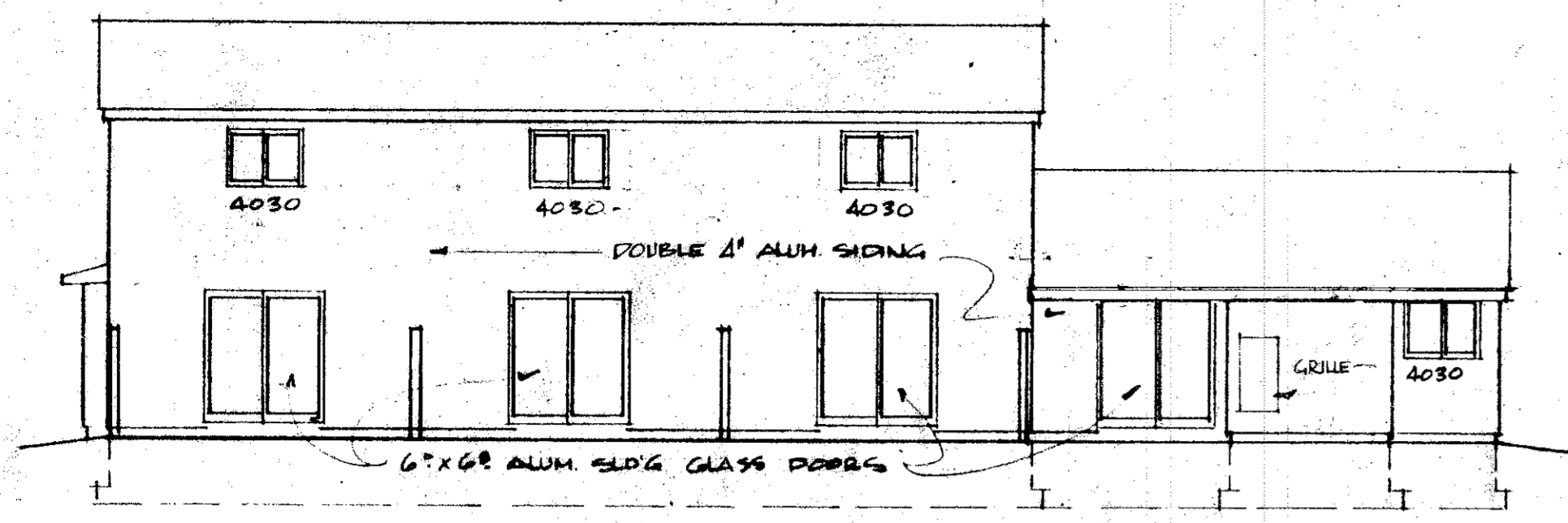
BLDG. 9 - UNITS A,B,C,D  
 8745 W. RIDGE RD.



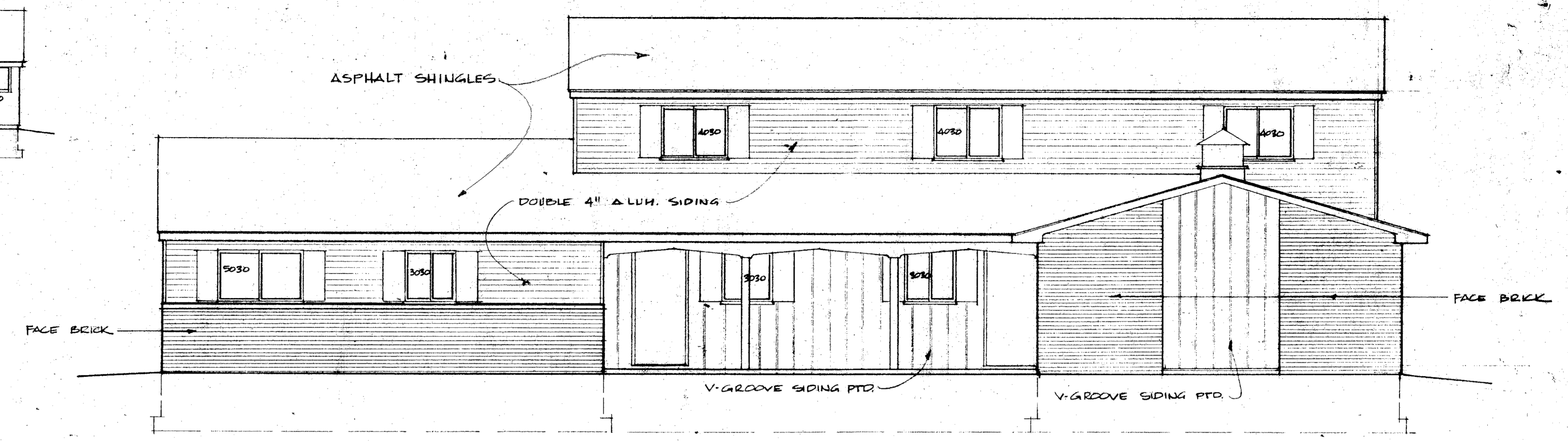


SECOND FLOOR PLAN  
SCALE 1/4" = 1'-0"

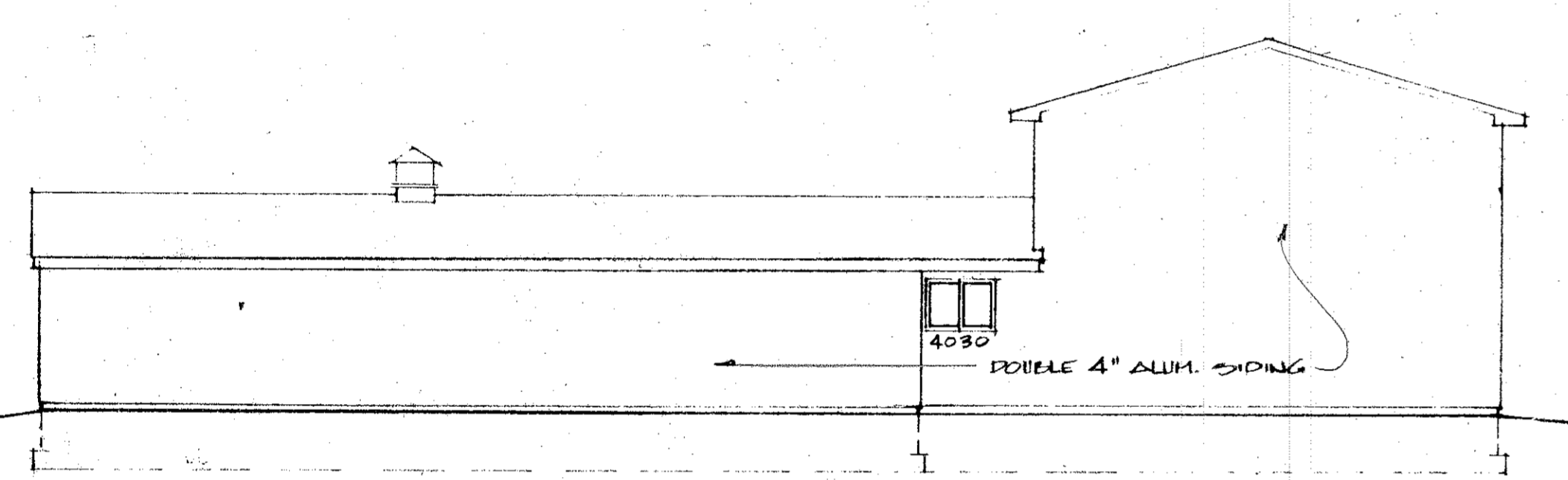
JUN 28 1973  
 6-8-73  
 BLDG. 9 - UNITS: A, B, C, D  
 8745 W. RIDGE RD.  
 28/49  
 109



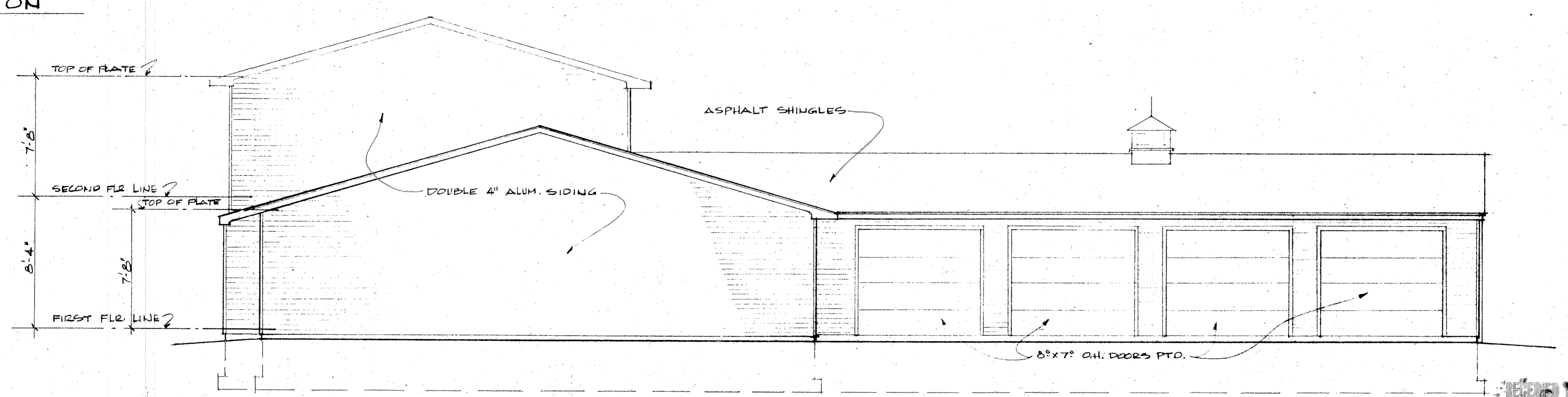
REAR ELEVATION  
SCALE 1/8" = 1'-0"



FRONT ELEVATION  
SCALE 1/4" = 1'-0"



RIGHT SIDE ELEVATION  
SCALE 1/8" = 1'-0"



LEFT SIDE ELEVATION  
SCALE 1/4" = 1'-0"

RECORDED FOR RECORD  
 JUN 29 1973  
 RECORDED IN LORAIN  
 COUNTY RECORDS  
 6-8-73

BLDG. 9 - UNITG A,B,C,D 28/50  
 8745 W. RIDGE RD.  
 6-8-73