

Note - This plot is re-recorded for the purpose of correcting proposed centerline measurement between PT station 34+23.47 and PI station 40+91.82 ft from 419.62 ft. to 468.35 ft.

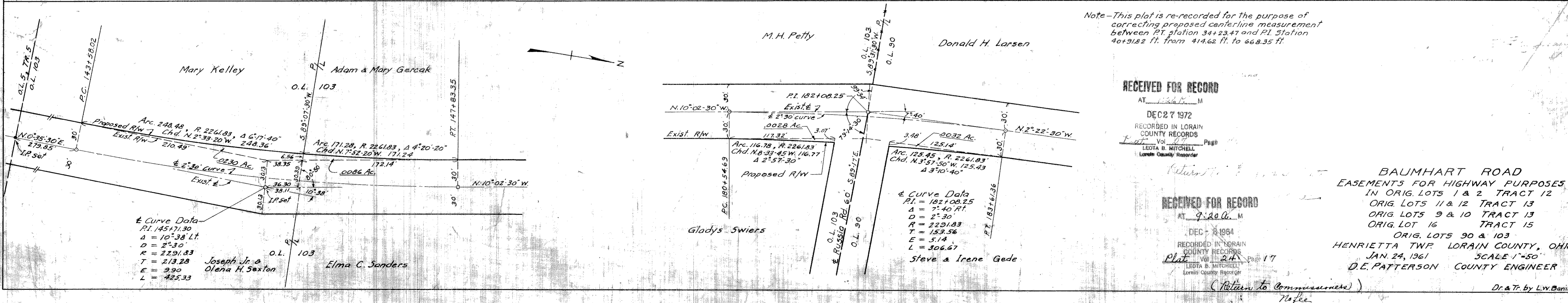
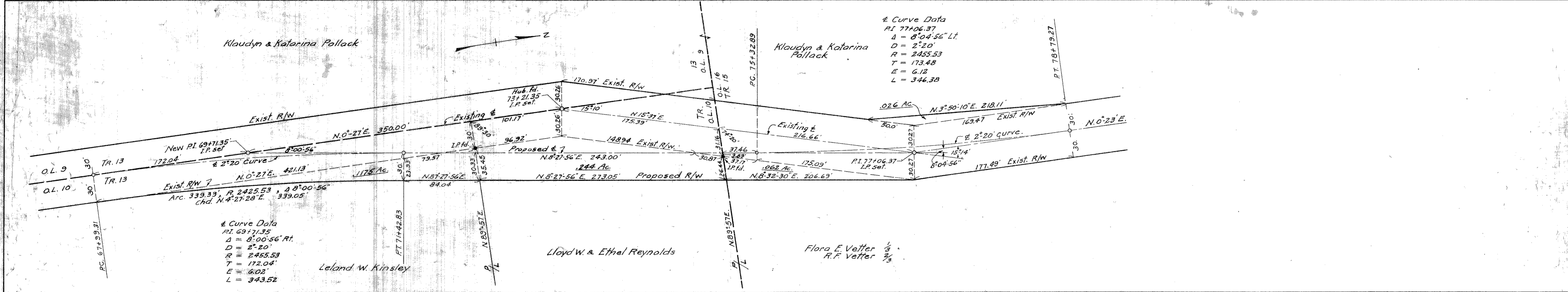
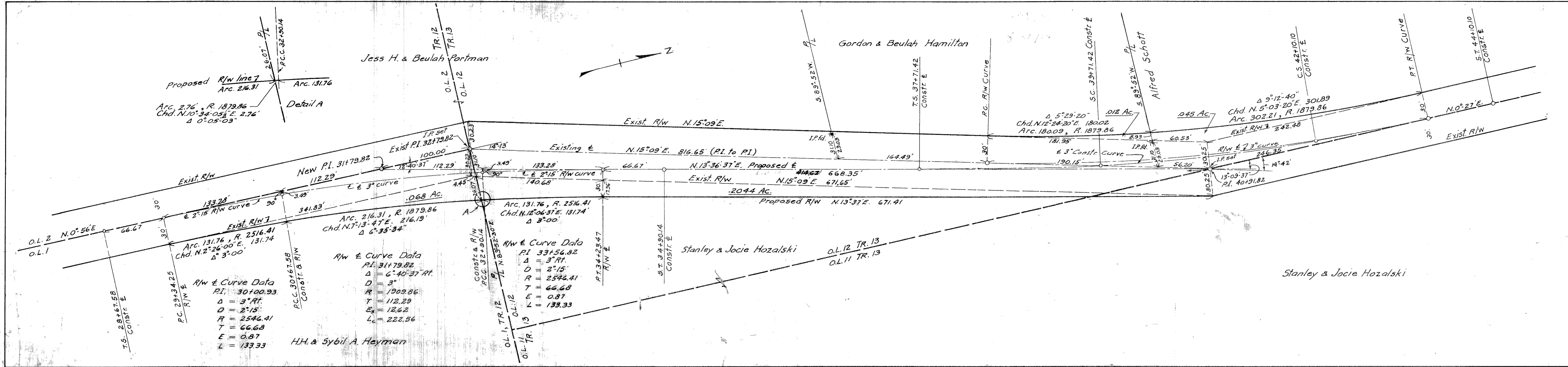
RECEIVED FOR RECORD

AT 12:57 PM
 DEC 7 1972
 RECORDED IN LORAIN COUNTY RECORDS
 PLAT No. 47 Page 70
 LORAIN COUNTY ENGINEERS

RECEIVED FOR RECORD

AT 9:20 AM
 DEC 11 1972
 RECORDED IN LORAIN COUNTY RECORDS
 PLAT No. 47 Page 70
 LORAIN COUNTY ENGINEERS

BAUMHART ROAD
 EASEMENTS FOR HIGHWAY PURPOSES
 IN ORIG. LOTS 1 & 2, TRACT 12
 ORIG. LOTS 11 & 12, TRACT 13
 ORIG. LOTS 9 & 10, TRACT 14
 ORIG. LOT 16, TRACT 15
 ORIG. LOTS 30 & 103
 HENRIETTA TWP, LORAIN COUNTY, OHIO
 JAN. 24, 1961 SCALE 1"=50'
 D.E. PATTERSON COUNTY ENGINEER



Note - This plat is re-recorded for the purpose of correcting proposed centerline measurement between PT. station 34+23.47 and PI. station 40+91.82 ft. from 414.62 ft. to 668.35 ft.

RECEIVED FOR RECORD

AT 11:46 A.M.
DEC 27 1972
RECORDED IN LORAIN COUNTY RECORDS
Book Vol 17 Page 11
LEOTA B. MITCHELL
Lorain County Recorder

RECEIVED FOR RECORD

AT 9:20 A.M.
DEC 8 1964
RECORDED IN LORAIN COUNTY RECORDS
Book Vol 24 Page 17
LEOTA B. MITCHELL
Lorain County Recorder

BAUMHART ROAD EASEMENTS FOR HIGHWAY PURPOSES
IN ORIG. LOTS 1 & 2 TRACT 12
ORIG. LOTS 9 & 10 TRACT 13
ORIG. LOT 16 TRACT 15
ORIG. LOTS 90 & 103
HENRIETTA TWP. LORAIN COUNTY, OHIO
JAN. 24, 1961 SCALE 1"=50'
D.E. PATTERSON COUNTY ENGINEER

(Return to Commissioner)

Dr. & Tr. by L.W. Banister