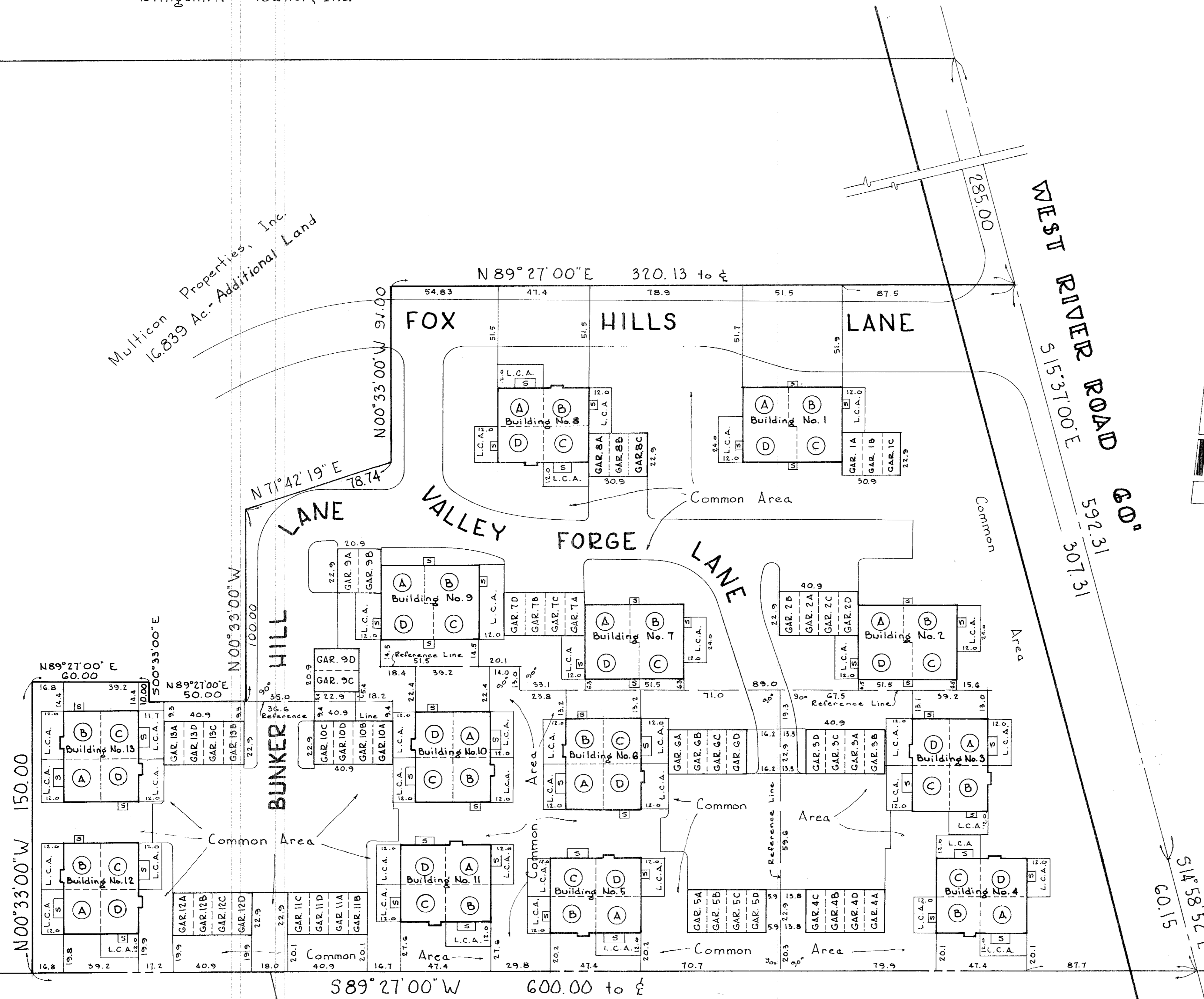


# PHASE I VILLAGE GREENE CONDOMINIUM EXHIBIT "C"

Situated In The City Of Elyria, County Of Lorain  
And State Of Ohio And Known As Being Part  
Of Original Elyria Township Lot No. 30,  
West Of River.  
Containing 3.799 Acres.

Klingshirn - Towner, Inc.

Multicon Properties, Inc.  
16,839 Ac.- Additional Land



O.L. 30  
O.L. 29

The Orlean Company

589° 27' 00" W 600.00 to E

Ralph Richards, Alma B. Veres, Aaron E. Richards

BUILDING NO.	UNIT	ELEVATION (U.S.G.S.)			
		FIN. 1 <sup>ST</sup> FLOOR	FIN. 1 <sup>ST</sup> FLR. CEIL	FIN. 2 <sup>ND</sup> FLOOR	FIN. 2 <sup>ND</sup> FLR. CEIL
1	A & C	700.2	—	710.0	717.4
1	B & D	700.2	708.2	—	—
2	A & C	702.9	—	712.7	720.1
2	B & D	702.9	710.9	—	—
3	A, B, C, D	702.6	710.6	712.4	719.8
4	A, B, C, D	702.8	710.8	712.6	720.0
5	A, B, C, D	701.5	709.5	711.3	718.7
6	A, B, C, D	701.3	709.3	711.1	718.5
7	A & C	700.9	—	710.7	718.1
7	B & D	700.9	708.9	—	—
8	A, B, C, D	699.8	707.8	709.6	717.0
9	A & C	700.5	—	710.3	717.7
9	B & D	700.5	708.5	—	—
10	A, B, C, D	701.0	709.0	710.8	718.2
11	A, B, C, D	701.4	709.4	711.2	718.6
12	A, B, C, D	700.6	708.6	710.4	717.8
13	A, B, C, D	700.4	708.4	710.2	717.6

I do hereby certify these drawings show graphically, all the particulars of the buildings of the Village Greene Condominium Phase I, including the layout, location, designation and dimensions of each unit and the common areas and buildings as constructed.

*Ramon A. Braun*  
Professional Engineer No. 27049

I do hereby certify the buildings of the Village Greene Condominium, Phase I, are located as show on these drawings and elevations above sea level are correct and said drawings accurately show the buildings as constructed.

*Joseph Prenail*  
Reg. Surveyor No. 5390

Note: "L.C.A." Denotes "Limited Common Area"  
"S" Denotes "Stoop"

TRANSFERRED  
IN COMPLIANCE WITH SEC. 5133 AND  
OHIO REV. CODE  
NOV 13 1972  
*Julian A. Pijan*  
AUDITOR

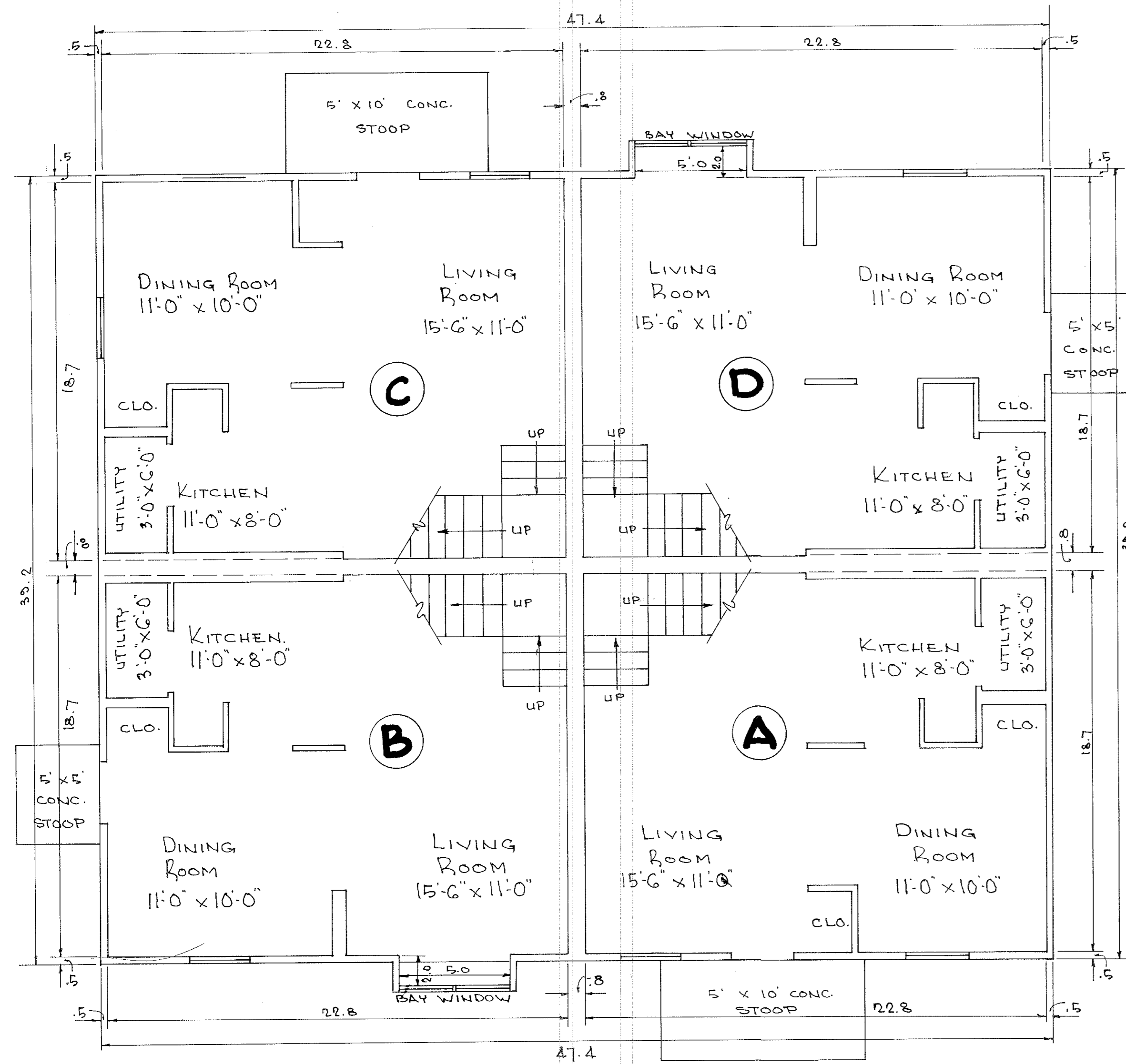
27/53

VILLAGE GREENE CONDOMINIUM  
PHASE I,  
EXHIBIT "C"

**LOCATION PLAT**

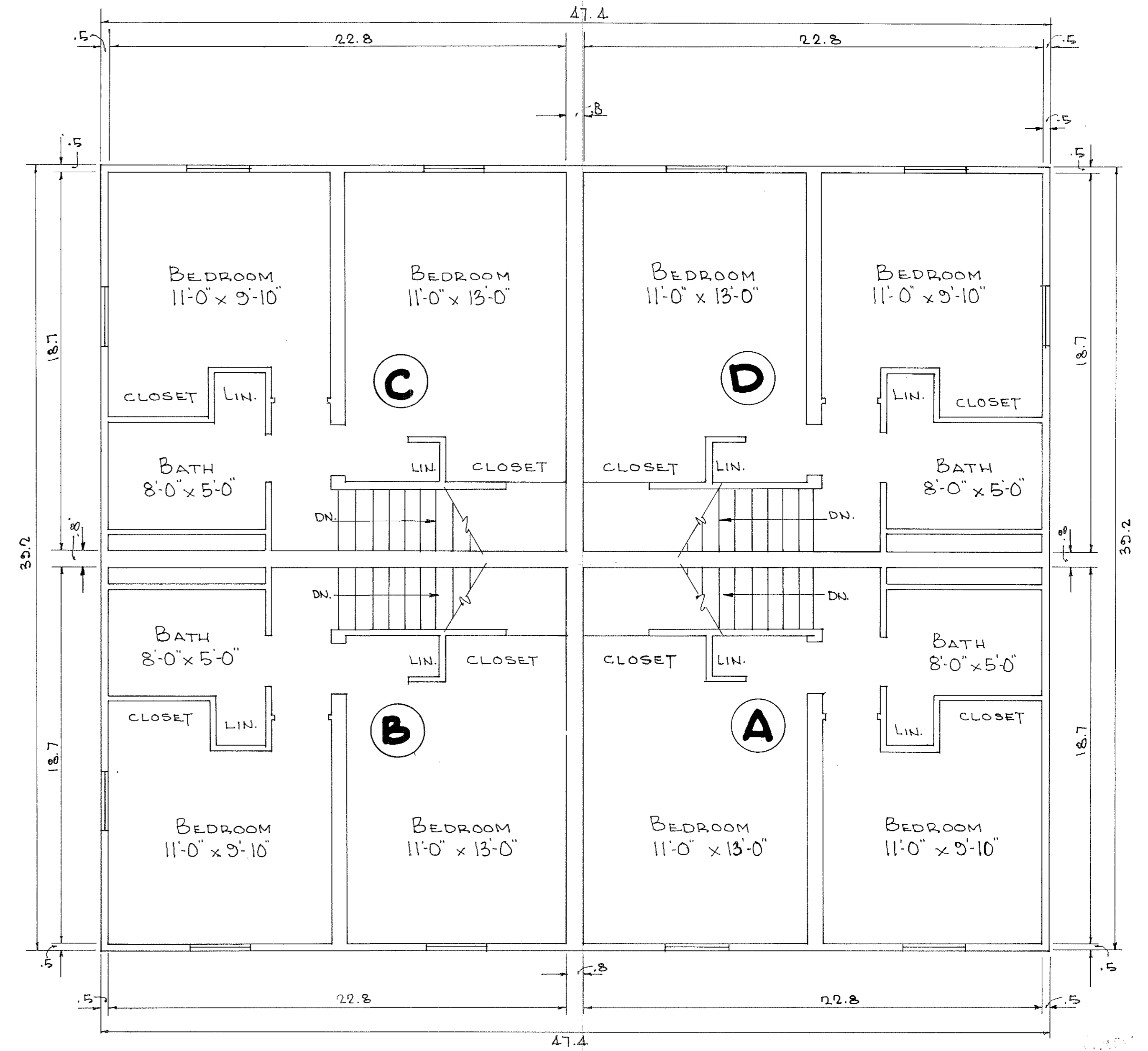
SCALE 1"=30' OCT, 1972 SHEET 1 OF 3

BRAUN, PRENOJIL & ASSOCIATES  
ENGINEERS-SURVEYORS CHAGRIN FALLS, O.



TYPICAL FIRST FLOOR PLAN FOR  
UNITS A, B, C & D  
IN BUILDINGS 3, 4, 5, 6, 8, 10, 11, 12, 13

Units "A", "B", "C", & "D" contain  
426 sq. ft. on each floor.



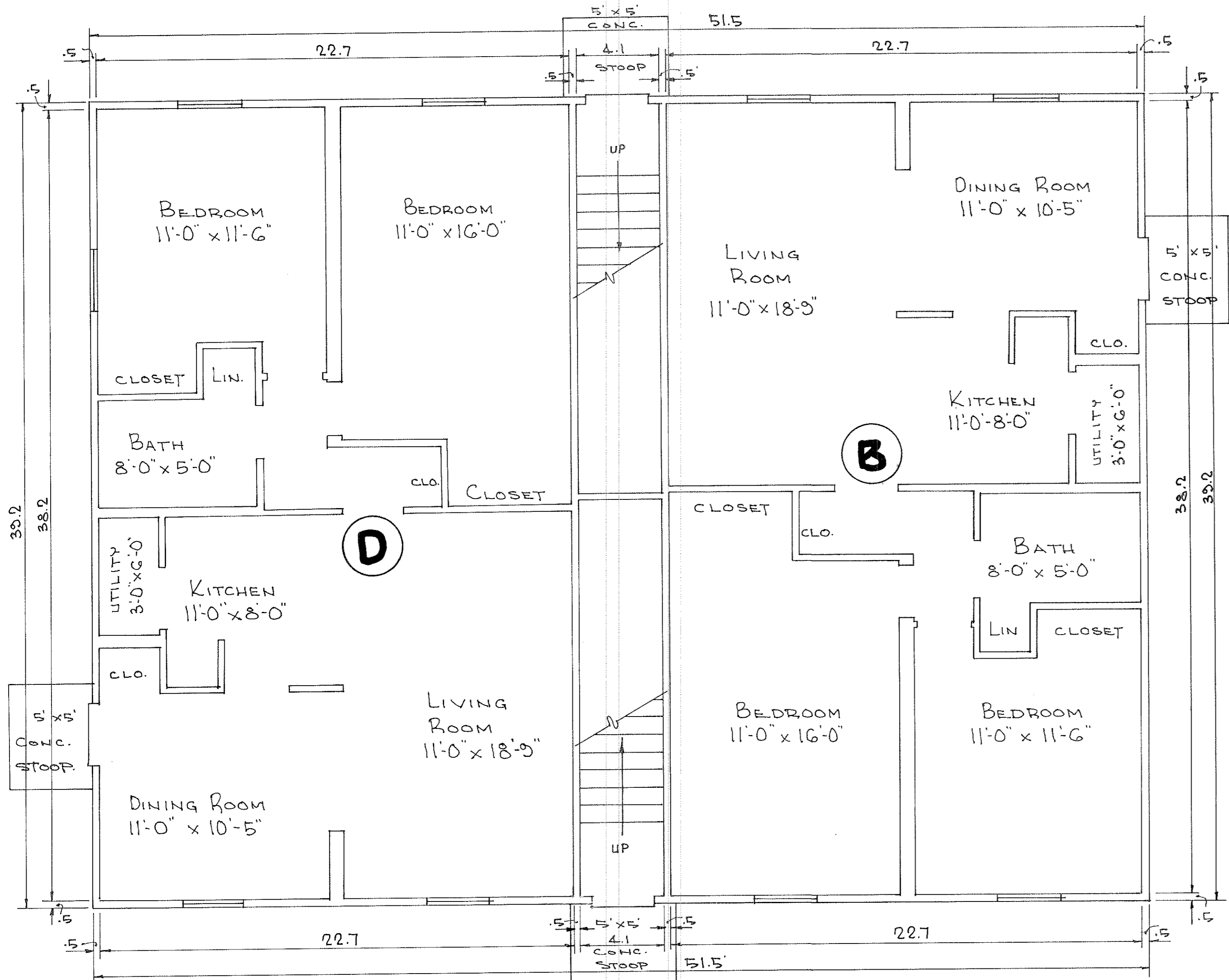
TYPICAL SECOND FLOOR PLAN FOR  
UNITS A, B, C & D  
IN BUILDINGS 3, 4, 5, 6, 8, 10, 11, 12, 13

TRANSFERRED  
IN COMPLIANCE WITH SEC. 319.332  
OHIO REV. CODE  
NOV 13 1972  
Julian A. Pigo  
AUG 1972

VILLAGE GREEN CONDOMINIUM  
PHASE "A"  
EXHIBIT "A"

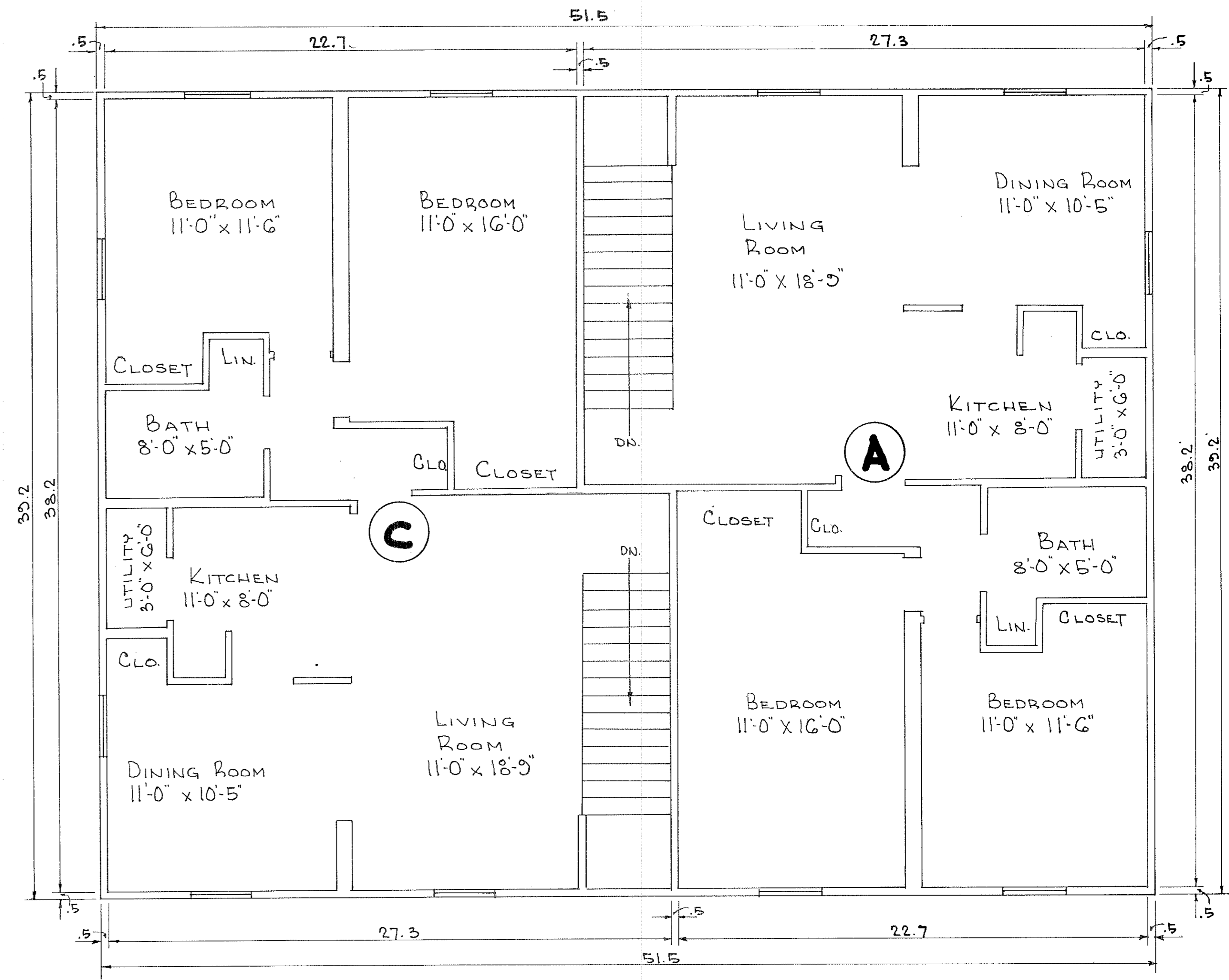
**FIRST & SECOND FLOOR  
PLAN OF TWO FLOOR  
UNITS**

SCALE: 1/4" = 1'-0" MAY, 1972 SHEET 2 OF 3  
BRAUN, PRENOSIL & ASSOCIATES  
ENGINEERS-SURVEYORS CHAGRIN FALLS, O.



TYPICAL FIRST FLOOR PLAN FOR UNITS "B" & "D" IN BUILDINGS 1, 2, 7 & 9

Units "B" & "D" on 1<sup>st</sup> floor contain 867 sq. ft.



TYPICAL SECOND FLOOR PLAN FOR UNITS "A" & "C" IN BUILDINGS 1, 2, 7 & 9

Units "A" & "C" on 2<sup>nd</sup> floor contain 954 sq. ft.

TRANSFERRED  
IN COMPLIANCE WITH SEC. 319.02  
OHIO REV. CODE  
NOV 13 1972  
FEE: NONE  
Julian A. Papp  
AUDITOR

RECEIVED FOR RECORD  
AT 2:57 P.M.  
NOV 13 1972  
RECORDED IN LORAIN  
COUNTY RECORDS  
Plat Vol. 27  
LEOTA B. MITCHELL  
Lorain County Recorder  
53-54-53  
51.84 Jmd.

VILLAGE GREEN CONDOMINIUM  
PHASE II  
EXHIBIT "A"  
FIRST & SECOND FLOOR  
PLAN OF ONE FLOOR  
UNITS  
SCALE: 1/4" = 1'-0" MAY, 1972 SHEET 3 OF 3  
BRAUN, PRENOSIL & ASSOCIATES  
ENGINEERS-SURVEYORS CHAGRIN FALLS, O

Land title