

Donald E. Watson Edward A. Schmitt

EXHIBIT A DRAWINGS FOR MILLS CREEK CONDOMINIUM
OF
MILLS CREEK SUBDIVISION - SECTION "D"
VOL. 25 OF MAPS. PAGES 41 & 42
SCALE 1"=50' JUNE 1971

776222
Pg 36

LEGEND 26/36 thru 42

L.C.A. BOUNDARY - - - - -

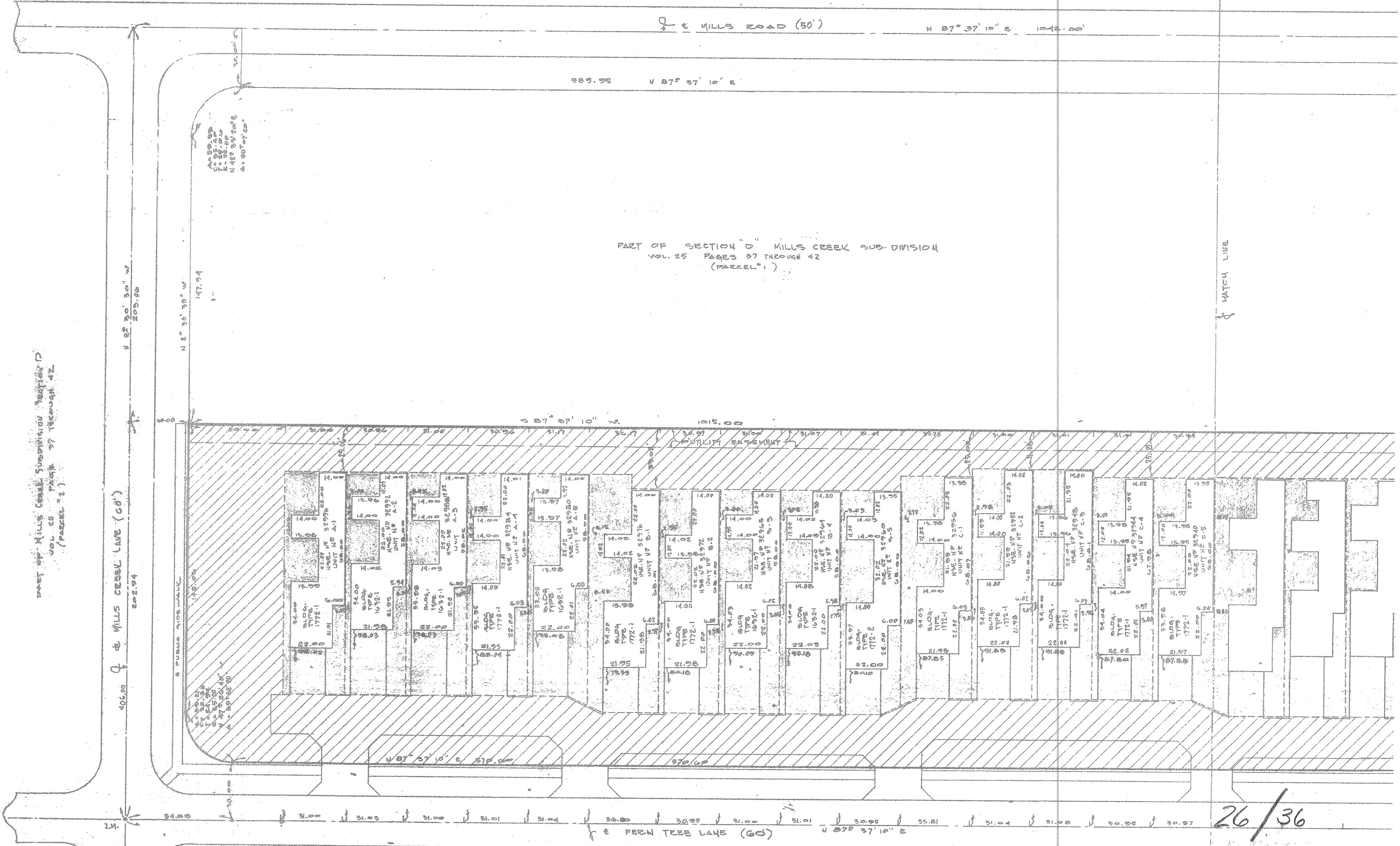
PROPERTY LINE - - - - -

L.C.F. - LIMITED COMMON AREAS & FACILITIES [diagonal hatching]

C.A. - COMMON AREAS AND FACILITIES [cross-hatching]

UTILITY EASEMENT [dashed line]

WE, DONALD E. WATSON, REGISTERED SURVEYOR, OHIO 44223 AND EDWARD A. SCHMITT, REGISTERED ARCHITECT, OHIO 4404 HEREBY CERTIFY THAT THE WITHIN DRAWINGS FOR MILLS CREEK CONDOMINIUM (CONSISTING OF PAGES 41 THROUGH 42) ACCURATELY SHOW THE BUILDINGS AS CONSTRUCTED



PART OF SECTION "D" MILLS CREEK SUB-DIVISION
VOL. 25 PAGES 37 THROUGH 42
(PARCEL "1")

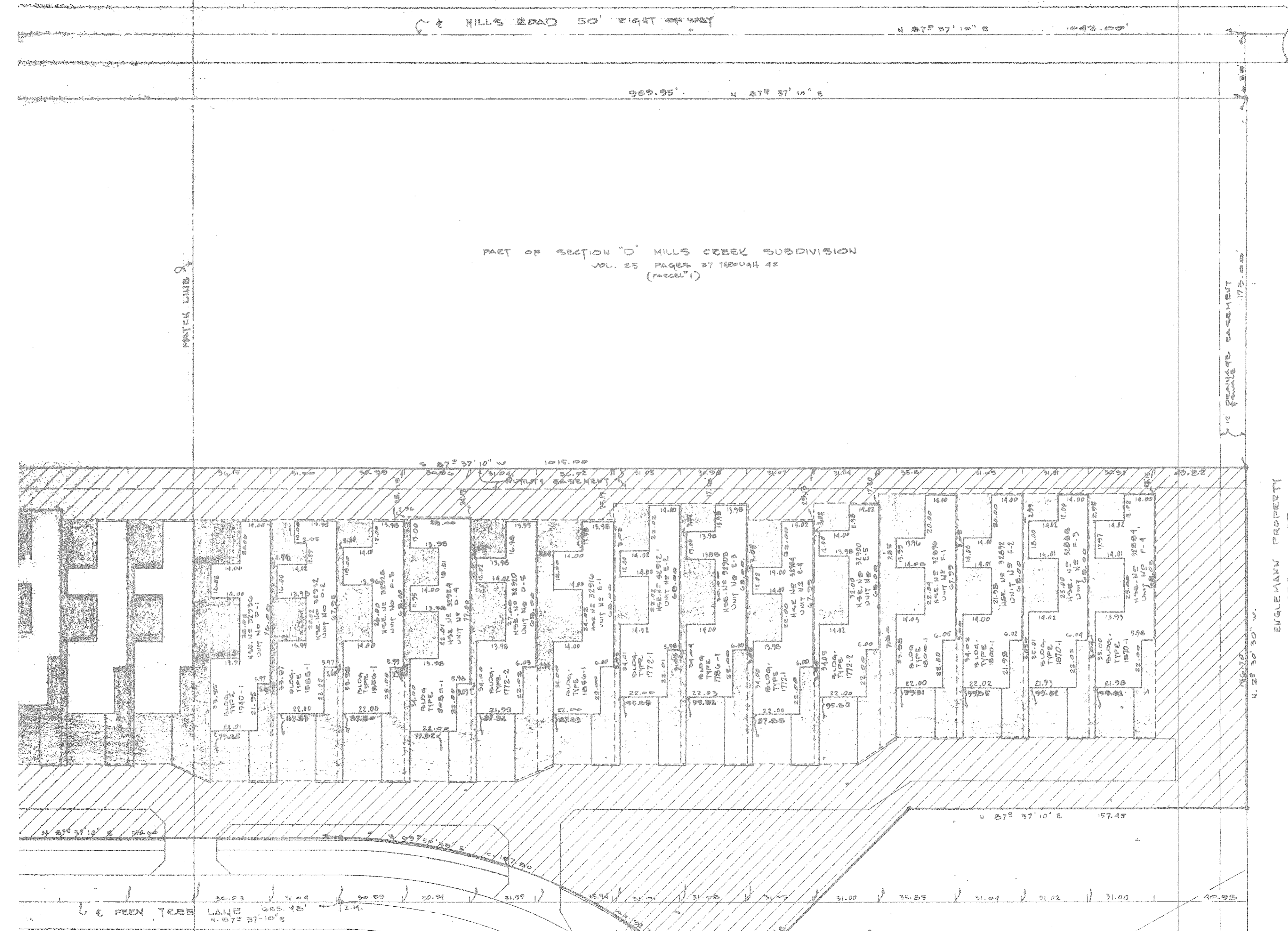
PART OF MILLS CREEK SUBDIVISION SECTION "D"
VOL. 25 PAGES 37 THROUGH 42

TAX MAP DEPARTMENT
County Administration Bldg.
328 Broad Street
Blythe, Ohio 44035

EXHIBIT A
 MILL'S CREEK SUBDIVISION SECTION D
 VOL. 25 OF MAPS PAGES 37 THROUGH 42
 SCALE 1"=50'
 DATE 1971

26/36 thru 42

- LEGEND
- L.C.A. BOUNDARY
 - PROPERTY LINE
 - L.C.A. LIMITED COMMON AREAS & FACILITIES
 - C.A. COMMON AREAS AND FACILITIES
 - UTILITY BASEMENT



PART OF SECTION "D" MILL'S CREEK SUBDIVISION
 VOL. 25 PAGES 37 THROUGH 42
 (PARCEL "1")

EVGUE MANN PROPERTY
 VOL. 339 PAGE 75



PART OF MILL'S CREEK SUBDIVISION
 SECTION "D"
 VOL. 25 OF MAPS
 PAGES 37 THROUGH 42

SUB LOT 398 OF
 MILL'S CREEK SUBDIVISION SECTION D
 VOL. 25 PAGES 37 THROUGH 42

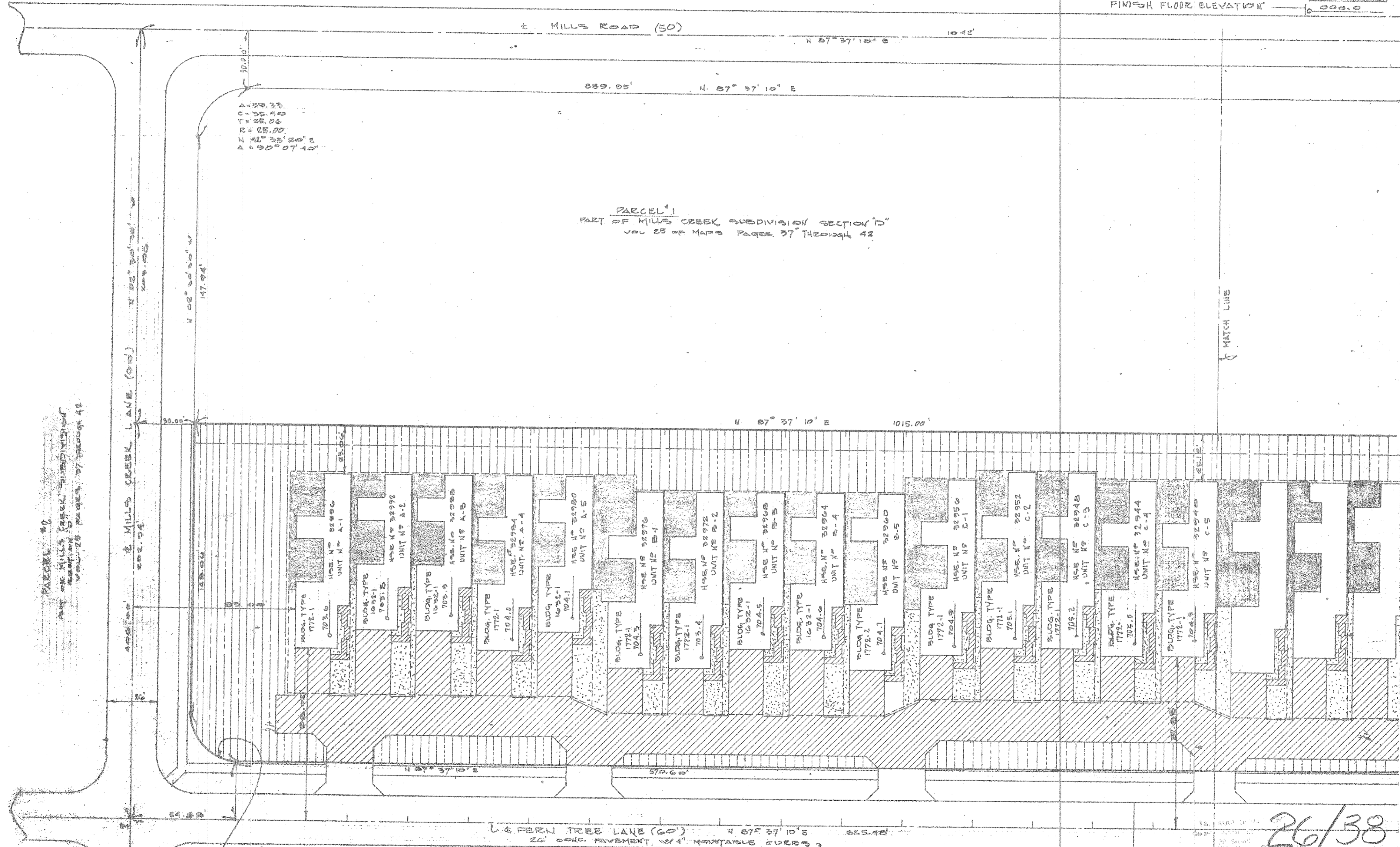
26/37

EXHIBIT "A" DRAWINGS FOR MILLS CREEK CONDOMINIUM
 OF
 MILLS CREEK SUBDIVISION SECTION "D"
 VOL 25 OF MAPS PAGES 37 THROUGH 42
 SCALE 1"=50' JUNE 1971

76111
 37

LEGEND 26/36 thru 42

L.I.C.A. BOUNDARY LINE	---
PROPERTY LINE	---
UTILITY EASEMENT	---
CONCRETE WALKS, DRIVES	▨
ACCESS ROAD	+
PLANTING BED	▨
IRREGULAR PLANTING AREAS	▨
ATRIUM COURTYARD AREAS	▨
FINISH FLOOR ELEVATION	000.0



A = 39.33
 C = 35.40
 T = 25.00
 R = 25.00
 L = 42° 53' 20" E
 P = 90° 07' 40"

A = 39.21
 C = 35.33
 T = 25.00
 R = 25.00
 L = 42° 52' 20" E
 P = 90° 07' 40"

PART OF MILLS CREEK SUBDIVISION SECTION "D"
 VOL 25 OF MAPS PAGES 37 THROUGH 42

26/38

TAX MAP DEPARTMENT
 County Administration Bldg.
 4000 Broad Street
 Byrd, Ohio 44088

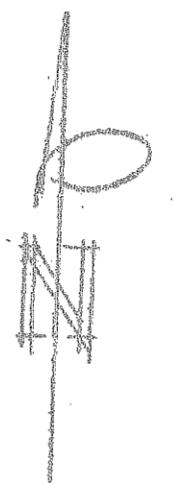
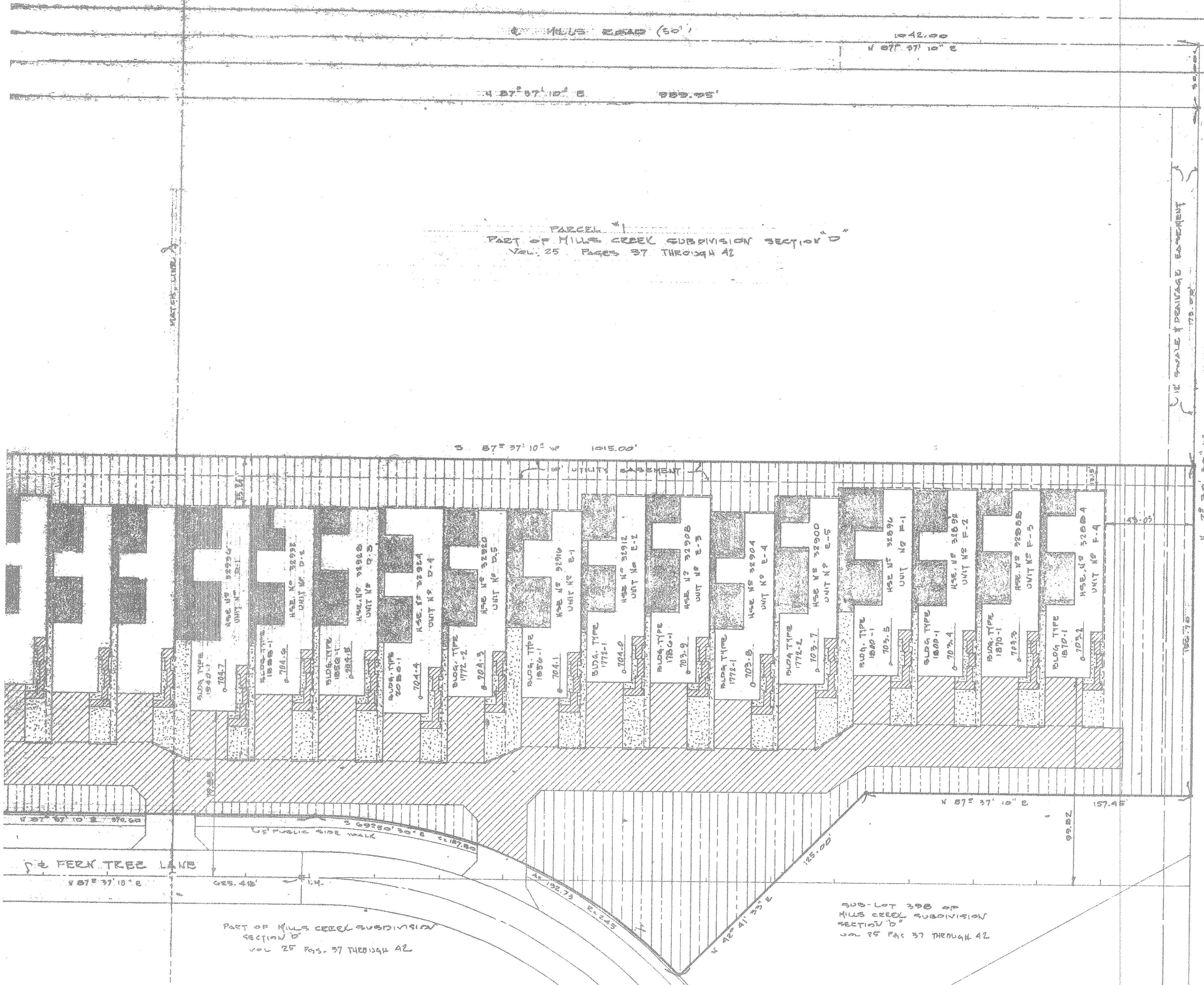
3/7

EXHIBIT A DRAWINGS FOR MILLS CREEK CONDOMINIUM

MILLS CREEK SUBDIVISION SECTION D
 VOL. 25 OF MAPS, PAGES 37 THROUGH 42
 SCALE 1" = 30' JUNE, 1977

26/36 thru 42

- UNITS CONDOMINIUM LINE
- PROPERTY LINE
- UTILITY EASEMENT
- CONCRETE WALKS, DRIVES, ACCESS ROAD
- PLANTING BED
- INFORMAL PLANTING AREA
- ATHELIUM COURTYARD AREAS
- FINISH FLOOR ELEVATION



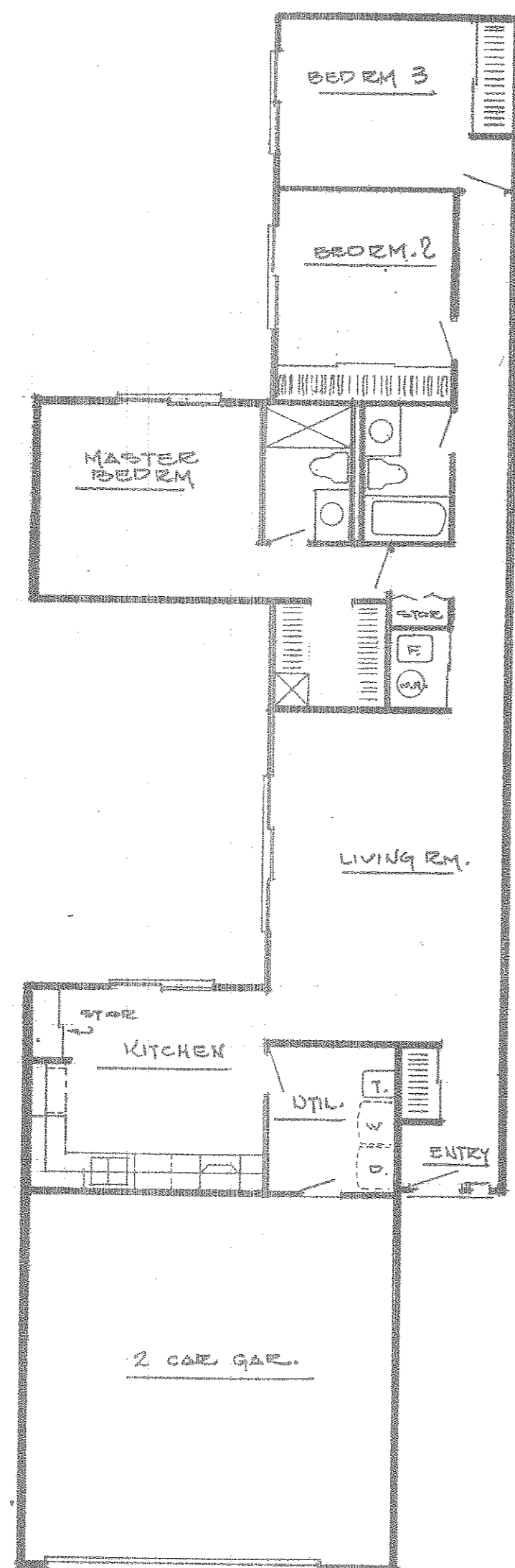
EUGLEMAN PROPERTY
 Vol. 555 Page 15

26/39

MILLS CREEK CONDOMINIUM FLOOR PLANS

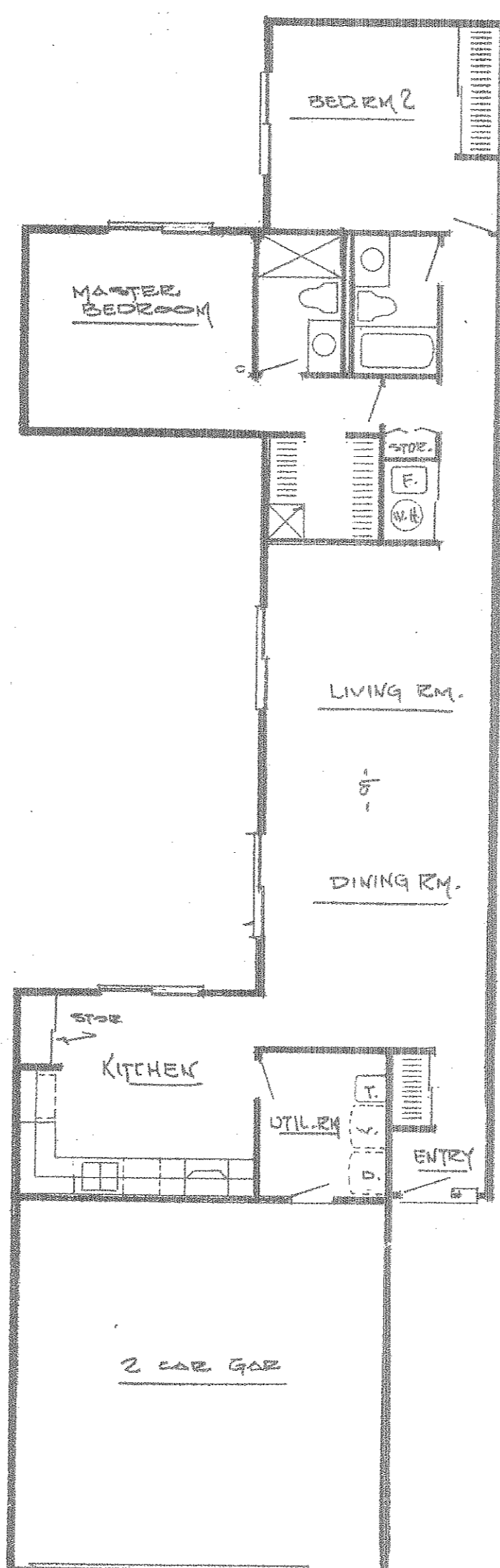
SCALE 1/8" = 1'-0" JUNE 1971

26/36 thru 42



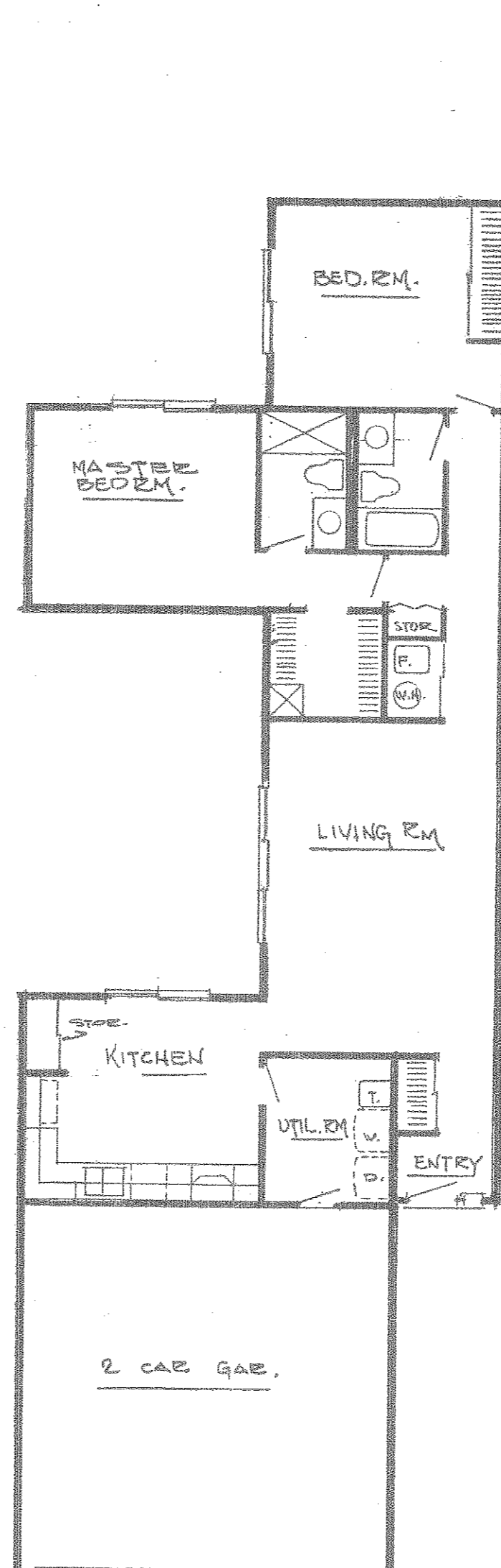
3 BEDRM. FLOOR/
PLAN
1772^{sq}

1772-1
USED FOR UNIT No's.
A-1, A-4, B-1, B-2,
B-5, C-1, C-2, C-3, C-4,
C-5, E-2, E-4



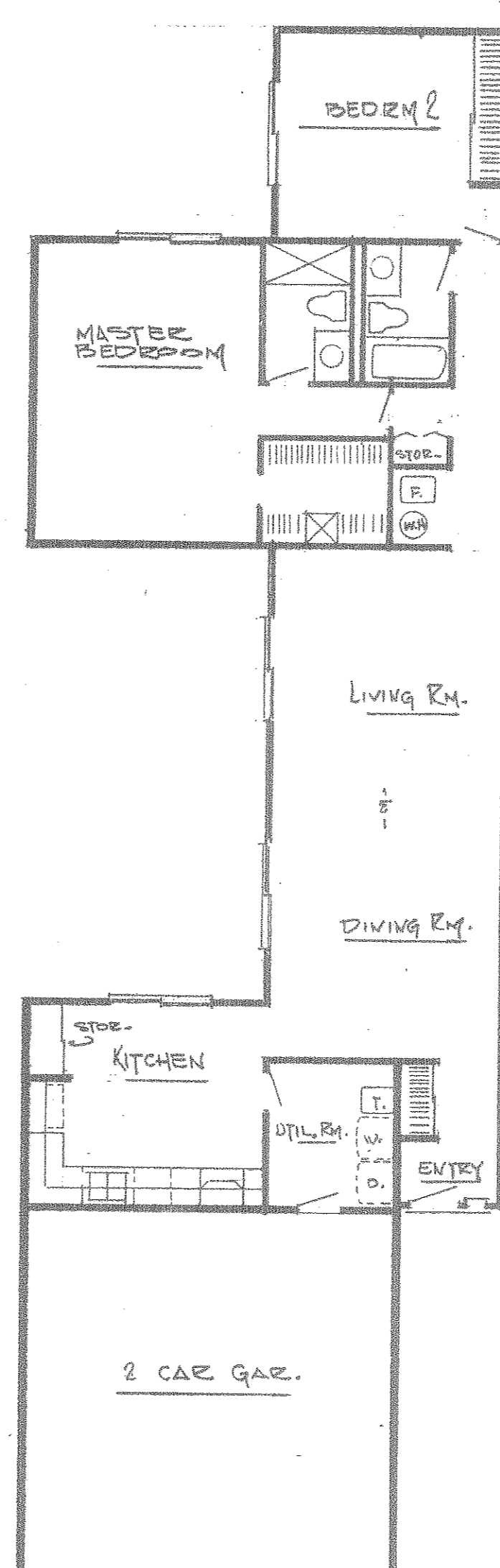
2 BEDRM. FLOOR/
PLAN
1772^{sq}

1772-2
USED FOR UNIT No's.
D-5, E-5



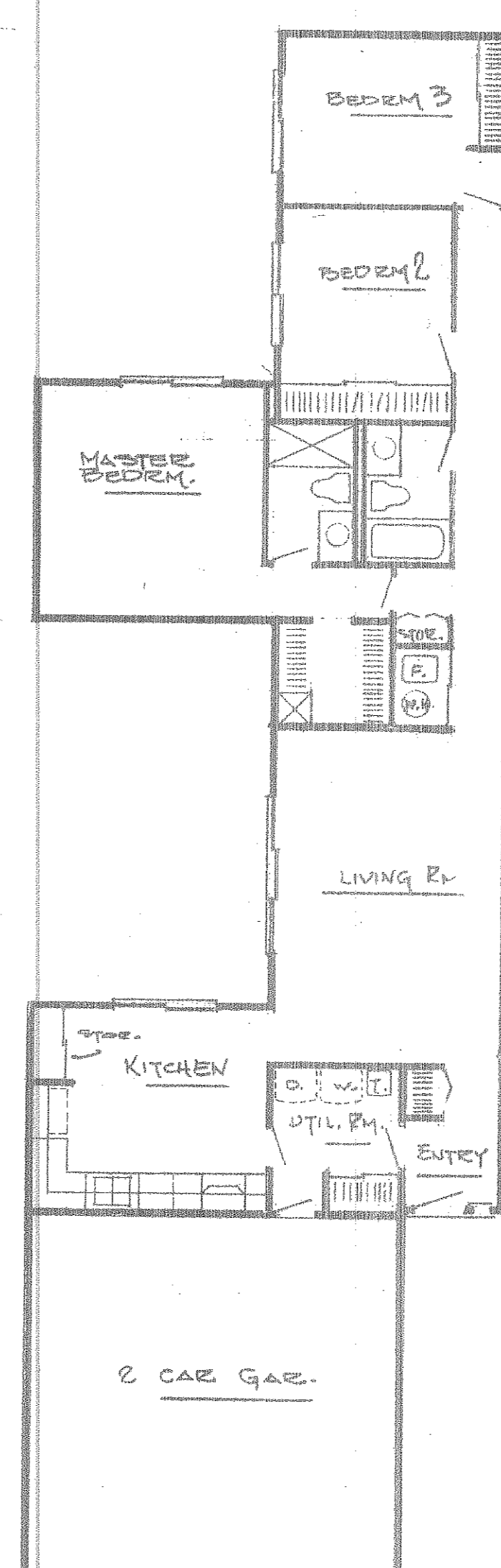
2 BEDRM. FLOOR/
PLAN
1632^{sq}

1632-1
USED FOR UNIT No's.
A-2, A-3, A-5, B-3 & B-4



2 BEDRM. FLOOR/
PLAN
1856^{sq}

1856-1
USED FOR UNIT No's.
D-3, E-1



3 BEDRM. FLOOR/
PLAN
1800^{sq}

1800-1
USED FOR UNIT No's.
F-1, F-2

26/40

MILLS CREEK CONDOMINIUM

FLOOR PLANS

SCALE 1/8" = 1'-0" JUNE 1971

26/36 thru 42



2 BEDRM. FLOOR PLAN
1786[±]
1786-1
USED FOR UNIT No's.
E-3

2 BEDRM. FLOOR PLAN
1870[±]
1870-1
USED FOR UNIT No's
F-3, F-4

3 BEDRM. FLOOR PLAN
1882[±]
1882-1
USED FOR UNIT No's
D-2

3 BEDRM. FLOOR PLAN
1940[±]
1940-1
USED FOR UNIT No's.

2 BEDRM. FLOOR PLAN
2080[±]
2080-1
USED FOR UNIT No's.
D-4

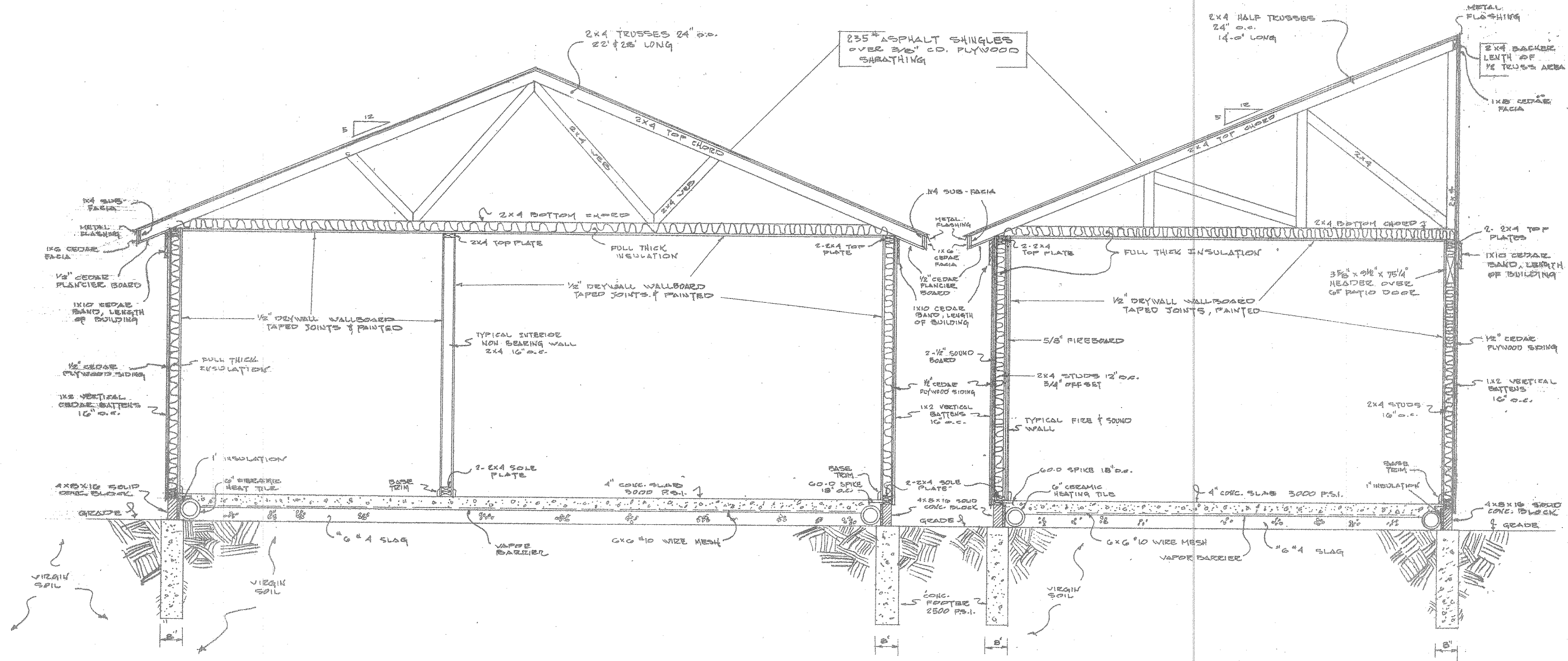
26/41

MILLS CREEK CONDOMINIUM
TYPICAL WALL SECTIONS

SCALE 1/2" = 1'-0" JUNE 1971

786 222

26/36 thru 42



RECEIVED FOR RECORD
AT 10:10 A.M.
JUL 12 1971
RECORDED IN LORAIN
COUNTY RECORDS
LORAIN COUNTY RECORDER

26/42

Part of Instrument
Recorded as Deed
Vol. 1087 Pg. 692

TAX MAP DEPARTMENT
County Administration Bldg.
501 Broad Street
Bryn Mawr, PA

7/7

TAX MAP DEPARTMENT
County Administration Bldg.