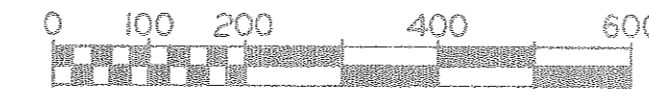


25/53, 54, 55, 56

CENTER LINE SURVEY PLAT

LORAIN COUNTY OHIO



CITY OF ELYRIA, WEST OF BLACK RIVER
LOT NO. 27, T6N, R17W.

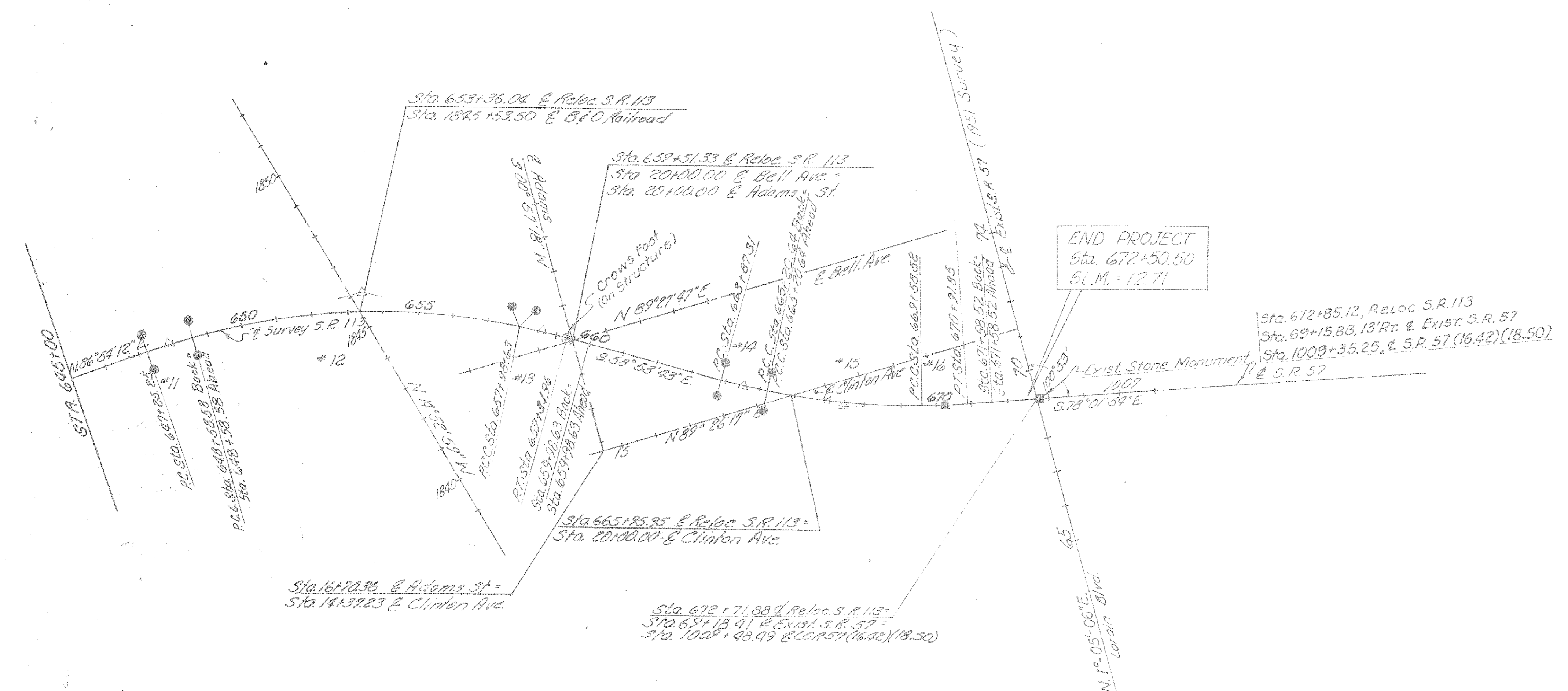
56

FED. RD. DIVISION	STATE	PROJECT
2	OHIO	

LOR 113-9.19 SOLD AS
LOR-113-10.09/11.64

249
269

4
4



CURVE DATA

#11 P.I. Sta. 677+91.93	#12 P.I. Sta. 653+38.32	#13 P.I. Sta. 668+65.31
Δ = 3° 00' 00" Rt.	Δ = 28° 12' 05" Rt.	Δ = 3° 00' 00" Rt.
D = 2° 15' 00"	D = 3° 00' 00"	D = 2° 15' 00"
R = 2596.91'	R = 1909.86'	R = 2596.91'
T = 66.68'	T = 478.79'	T = 66.68'
L = 133.33'	L = 940.05'	L = 133.33'
E = 0.87'	E = 39.33'	E = 0.87'

CURVE DATA

#14 P.I. Sta. 669+53.29	#15 P.I. Sta. 667+90.54	#16 P.I. Sta. 670+25.20
Δ = 3° 00' 00" Lt.	Δ = 3° 08' 11" Lt.	Δ = 3° 00' 00" Lt.
D = 2° 15' 00"	D = 3° 00' 00"	D = 2° 15' 00"
R = 2596.91'	R = 1909.86'	R = 2596.91'
T = 66.68'	T = 219.90'	T = 66.68'
L = 133.33'	L = 437.88'	L = 133.33'
E = 0.87'	E = 12.62'	E = 0.87'

RECEIVED FOR RECORD
A 2-18-64
L.M.

25/56

25/56