

NO TRANSFER NECESSARY

JOSEPH J. MITCHELL  
LORAIN COUNTY AUDITOR

*B. Davis*

8-14-68

CENTER LINE SURVEY PLAT 731782

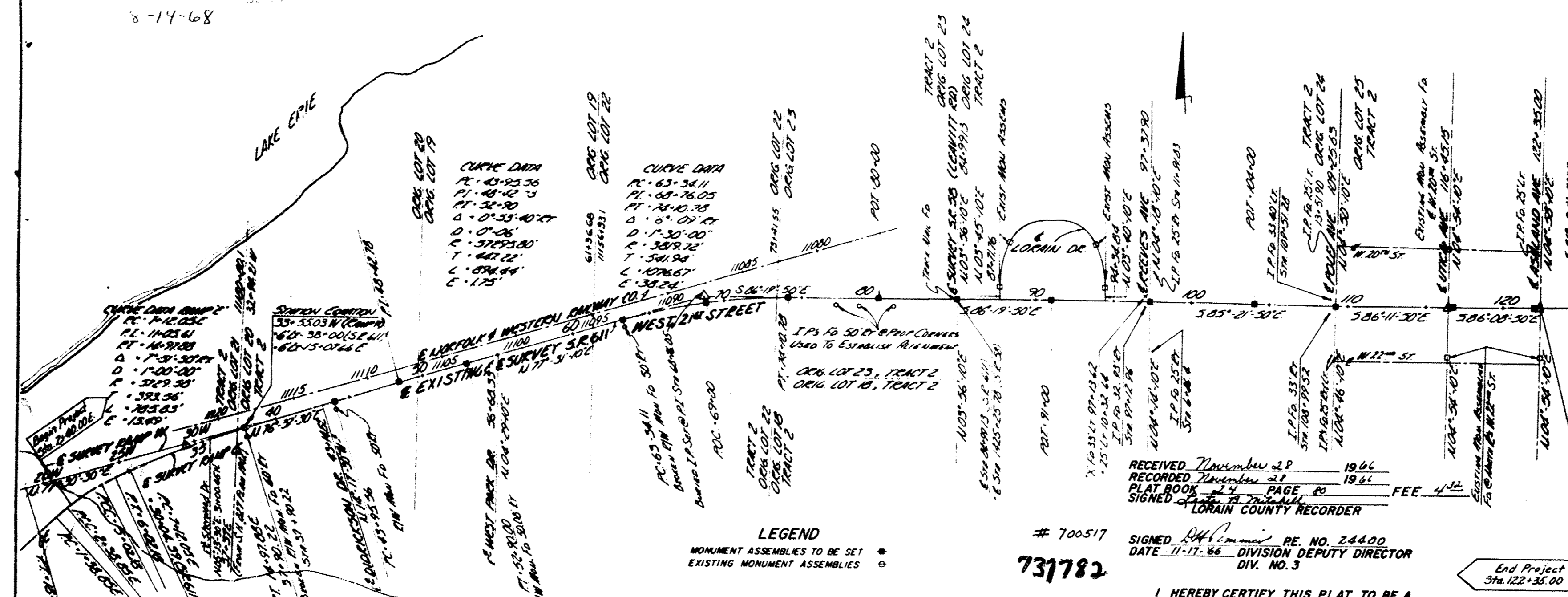
LOR-611-(0.05-197)

BLACK RIVER TOWNSHIP, CITY OF LORAIN, LORAIN COUNTY, OHIO

SCALE OF FEET  
0 300 600 900 1200

T.7N., R.18W., ORIG. LOTS 19, 20, 21, 22, 23, 24, & 25, TRACT 2

SOLD AS  
LOR-611-(0.05-197)  
CENTER LINE SURVEY PLAT  
LOR-611A/611-0.37/0.00



NOTE-  
SEE VOLUME 18, PAGE 35 OF LORAIN COUNTY PLAT RECORDS FOR  
CENTERLINE LOCATION PLAN OF LOR-6-(6.41-794)

NOTE-  
STANDARD MONUMENT ASSEMBLIES ARE TO BE PLACED DURING  
CONSTRUCTION IN THE EXISTING PAVEMENT AFTER THE LEVELING COURSE  
AND PRIOR TO THE SURFACE COURSES.

ALL MONUMENTS ARE TO BE PLACED UNDER THE DIRECTION  
OF THE PROJECT ENGINEER AND ANY ALTERATIONS SHALL BE NOTED  
AND THE RIGHT OF WAY DEPARTMENT OF DIVISION 3 SHALL BE  
NOTIFIED OF THE NEW LOCATION.

FOR DETAIL OF MONUMENT ASSEMBLIES SEE STANDARD DRAWING MC-1

QUAN	MONUMENT STATION	ASSEMBLIES LOCATION	REMARKS
1	37+90.22	6 SURVEY	PT
1	43+90.56	1 S. 1/4	PT
1	48+42.78	1/2 S. 1/4 E	PT
1	52+90.00	E SURVEY	PT
1	63+34.11		PT
1	69+00		PT
1	74+07.78		PT
1	80+00		PT
1	82+99.13		PT
1	91+00		PT
1	97+37.90		PT
1	100+00		PT
1	109+25.62		PT
1	116+72.5		PT
1	122+10		PT

LEGEND  
MONUMENT ASSEMBLIES TO BE SET ●  
EXISTING MONUMENT ASSEMBLIES ○

# 700517  
731782

RECEIVED November 21 1966  
RECORDED November 21 1966  
PLAT BOOK 14 PAGE 40 FEE 4.00  
SIGNED [Signature] LORAIN COUNTY RECORDER

SIGNED [Signature] RE. NO. 24400  
DATE 11-17-66 DIVISION DEPUTY DIRECTOR  
DIV. NO. 3

I HEREBY CERTIFY THIS PLAT TO BE A  
TRUE DELINEATION OF A SURVEY MADE BY  
ENGINEERING ASSOCIATES OF WOOSTER,  
OHIO.

DATE Oct 21 1968 BY [Signature]  
REGISTERED SURVEYOR NO. 4, 53

RECEIVED Aug 14 1968  
RECORDED Aug 14 1968  
PLAT BOOK 14 PAGE 30 FEE 4.00  
SIGNED [Signature] LORAIN COUNTY RECORDER

PREPARED BY  
ENGINEERING ASSOCIATES  
CONSULTING ENGINEERS  
WOOSTER, OHIO

NOTE: MONUMENT ASSEMBLY  
CHANGED FROM STA. 100+75  
TO STA. 116+72.5 7-29-68  
PAB.

CENTER LINE SURVEY PLAT LOR-611-0.05-197

CENTER LINE SURVEY PLAT 25/30