

CENTERLINE SURVEY PLAT

CARLISLE LOR. 20/10 ~ 8.21/8.63 PART II
~~CARLISLE~~ TWP. SEC. 13, 14, 8, 7, 6 ~ 7-5-N-R-17-W
 EATON TWP. LOT 93 ~ 7-5-N-R-16-W
 LORAIN COUNTY, OHIO

720153
 743153

TRANSFERRED
 IN COMPLIANCE WITH E.C. 518.201
 OHIO REV. CODE

MAR 7 1968

Joseph M. Moore
 AUDITOR

LOR. 20/10-82/8.63 PART II
 SOLD AS LOR. 20/10

LIMITED ACCESS
 THIS IMPROVEMENT HAS BEEN DECLARED A LIMITED ACCESS HIGHWAY FROM STATION 865+55.53 TO STATION 834+96.41 ON THE LEFT AND FROM STATION 840.00 TO STATION 835+64.17 ON THE RIGHT, BY ACTION OF THE DIRECTOR OF HIGHWAYS AND AS RECORDED BY ENTRY MADE ON THE RECORDS OF THE DIRECTOR OF HIGHWAYS, DEC. 1, 1966, VOL. 44 PAGE 853.

SCALE IN FEET

LOCATION OF MONUMENT	R/W	MONUMENTS	LOCATION OF MONUMENT	R/W	MONUMENTS
875+00	PC		868+94.08	PT	
878+88.42	PC		872+00	PT	
880+00	PC		877+02.82	PC	
884+00	PC		882+00.00	PT	
902+00.84	PT		887+00.00	PC	
905+00	PT		887+00.00	PT	
910+00	PT		887+00.00	PC	
915+00	PT		887+00.00	PT	
920+00	PT		887+00.00	PC	
925+00	PT		887+00.00	PT	
930+00	PT		887+00.00	PC	
935+00	PT		887+00.00	PT	
940+00	PT		887+00.00	PC	
945+00	PT		887+00.00	PT	
950+00	PT		887+00.00	PC	
955+00	PT		887+00.00	PT	
960+00	PT		887+00.00	PC	
965+00	PT		887+00.00	PT	
970+00	PT		887+00.00	PC	
975+00	PT		887+00.00	PT	
980+00	PT		887+00.00	PC	
985+00	PT		887+00.00	PT	
990+00	PT		887+00.00	PC	
995+00	PT		887+00.00	PT	
1000+00	PT		887+00.00	PC	
1005+00	PT		887+00.00	PT	
1010+00	PT		887+00.00	PC	
1015+00	PT		887+00.00	PT	
1020+00	PT		887+00.00	PC	
1025+00	PT		887+00.00	PT	
1030+00	PT		887+00.00	PC	
1035+00	PT		887+00.00	PT	
1040+00	PT		887+00.00	PC	
1045+00	PT		887+00.00	PT	
1050+00	PT		887+00.00	PC	
1055+00	PT		887+00.00	PT	
1060+00	PT		887+00.00	PC	
1065+00	PT		887+00.00	PT	
1070+00	PT		887+00.00	PC	
1075+00	PT		887+00.00	PT	
1080+00	PT		887+00.00	PC	
1085+00	PT		887+00.00	PT	
1090+00	PT		887+00.00	PC	
1095+00	PT		887+00.00	PT	
1100+00	PT		887+00.00	PC	
1105+00	PT		887+00.00	PT	
1110+00	PT		887+00.00	PC	
1115+00	PT		887+00.00	PT	
1120+00	PT		887+00.00	PC	
1125+00	PT		887+00.00	PT	
1130+00	PT		887+00.00	PC	
1135+00	PT		887+00.00	PT	
1140+00	PT		887+00.00	PC	
1145+00	PT		887+00.00	PT	
1150+00	PT		887+00.00	PC	
1155+00	PT		887+00.00	PT	
1160+00	PT		887+00.00	PC	
1165+00	PT		887+00.00	PT	
1170+00	PT		887+00.00	PC	
1175+00	PT		887+00.00	PT	
1180+00	PT		887+00.00	PC	
1185+00	PT		887+00.00	PT	
1190+00	PT		887+00.00	PC	
1195+00	PT		887+00.00	PT	
1200+00	PT		887+00.00	PC	
1205+00	PT		887+00.00	PT	
1210+00	PT		887+00.00	PC	
1215+00	PT		887+00.00	PT	
1220+00	PT		887+00.00	PC	
1225+00	PT		887+00.00	PT	
1230+00	PT		887+00.00	PC	
1235+00	PT		887+00.00	PT	
1240+00	PT		887+00.00	PC	
1245+00	PT		887+00.00	PT	
1250+00	PT		887+00.00	PC	
1255+00	PT		887+00.00	PT	
1260+00	PT		887+00.00	PC	
1265+00	PT		887+00.00	PT	
1270+00	PT		887+00.00	PC	
1275+00	PT		887+00.00	PT	
1280+00	PT		887+00.00	PC	
1285+00	PT		887+00.00	PT	
1290+00	PT		887+00.00	PC	
1295+00	PT		887+00.00	PT	
1300+00	PT		887+00.00	PC	
1305+00	PT		887+00.00	PT	
1310+00	PT		887+00.00	PC	
1315+00	PT		887+00.00	PT	
1320+00	PT		887+00.00	PC	
1325+00	PT		887+00.00	PT	
1330+00	PT		887+00.00	PC	
1335+00	PT		887+00.00	PT	
1340+00	PT		887+00.00	PC	
1345+00	PT		887+00.00	PT	
1350+00	PT		887+00.00	PC	
1355+00	PT		887+00.00	PT	
1360+00	PT		887+00.00	PC	
1365+00	PT		887+00.00	PT	
1370+00	PT		887+00.00	PC	
1375+00	PT		887+00.00	PT	
1380+00	PT		887+00.00	PC	
1385+00	PT		887+00.00	PT	
1390+00	PT		887+00.00	PC	
1395+00	PT		887+00.00	PT	
1400+00	PT		887+00.00	PC	
1405+00	PT		887+00.00	PT	
1410+00	PT		887+00.00	PC	
1415+00	PT		887+00.00	PT	
1420+00	PT		887+00.00	PC	
1425+00	PT		887+00.00	PT	
1430+00	PT		887+00.00	PC	
1435+00	PT		887+00.00	PT	
1440+00	PT		887+00.00	PC	
1445+00	PT		887+00.00	PT	
1450+00	PT		887+00.00	PC	
1455+00	PT		887+00.00	PT	
1460+00	PT		887+00.00	PC	
1465+00	PT		887+00.00	PT	
1470+00	PT		887+00.00	PC	
1475+00	PT		887+00.00	PT	
1480+00	PT		887+00.00	PC	
1485+00	PT		887+00.00	PT	
1490+00	PT		887+00.00	PC	
1495+00	PT		887+00.00	PT	
1500+00	PT		887+00.00	PC	
1505+00	PT		887+00.00	PT	
1510+00	PT		887+00.00	PC	
1515+00	PT		887+00.00	PT	
1520+00	PT		887+00.00	PC	
1525+00	PT		887+00.00	PT	
1530+00	PT		887+00.00	PC	
1535+00	PT		887+00.00	PT	
1540+00	PT		887+00.00	PC	
1545+00	PT		887+00.00	PT	
1550+00	PT		887+00.00	PC	
1555+00	PT		887+00.00	PT	
1560+00	PT		887+00.00	PC	
1565+00	PT		887+00.00	PT	
1570+00	PT		887+00.00	PC	
1575+00	PT		887+00.00	PT	
1580+00	PT		887+00.00	PC	
1585+00	PT		887+00.00	PT	
1590+00	PT		887+00.00	PC	
1595+00	PT		887+00.00	PT	
1600+00	PT		887+00.00	PC	
1605+00	PT		887+00.00	PT	
1610+00	PT		887+00.00	PC	
1615+00	PT		887+00.00	PT	
1620+00	PT		887+00.00	PC	
1625+00	PT		887+00.00	PT	
1630+00	PT		887+00.00	PC	
1635+00	PT		887+00.00	PT	
1640+00	PT		887+00.00	PC	
1645+00	PT		887+00.00	PT	
1650+00	PT		887+00.00	PC	
1655+00	PT		887+00.00	PT	
1660+00	PT		887+00.00	PC	
1665+00	PT		887+00.00	PT	
1670+00	PT		887+00.00	PC	
1675+00	PT		887+00.00	PT	
1680+00	PT		887+00.00	PC	
1685+00	PT		887+00.00	PT	
1690+00	PT		887+00.00	PC	
1695+00	PT		887+00.00	PT	
1700+00	PT		887+00.00	PC	
1705+00	PT		887+00.00	PT	
1710+00	PT		887+00.00	PC	
1715+00	PT		887+00.00	PT	
1720+00	PT		887+00.00	PC	
1725+00	PT		887+00.00	PT	
1730+00	PT		887+00.00	PC	
1735+00	PT		887+00.00	PT	
1740+00	PT		887+00.00	PC	
1745+00	PT		887+00.00	PT	
1750+00	PT		887+00.00	PC	
1755+00	PT		887+00.00	PT	
1760+00	PT		887+00.00	PC	
1765+00	PT		887+00.00	PT	
1770+00	PT		887+00.00	PC	
1775+00	PT		887+00.00	PT	
1780+00	PT		887+00.00	PC	
1785+00	PT		887+00.00	PT	
1790+00	PT		887+00.00	PC	
1795+00	PT		887+00.00	PT	
1800+00	PT		887+00.00	PC	
1805+00	PT		887+00.00	PT	
1810+00	PT		887+00.00	PC	
1815+00	PT		887+00.00	PT	
1820+00	PT		887+00.00	PC	
1825+00	PT		887+00.00	PT	
1830+00	PT		887+00.00	PC	
1835+00	PT		887+00.00	PT	
1840+00	PT		887+00.00	PC	
1845+00	PT		887+00.00	PT	
1850+00	PT		887+00.00	PC	
1855+00	PT		887+00.00	PT	
1860+00	PT		887+00.00	PC	

CENTERLINE SURVEY PLAT

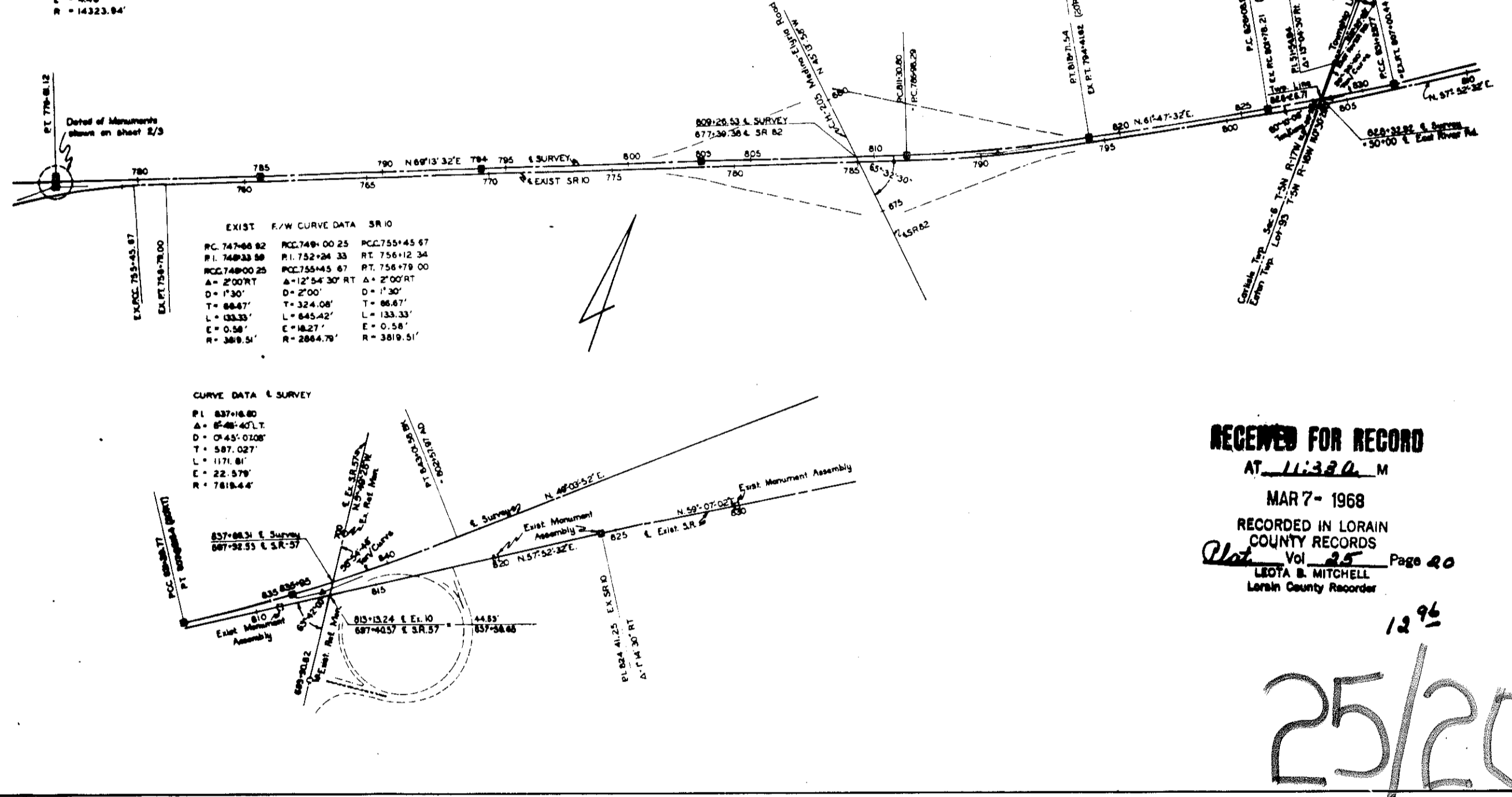
720153
743153

LOR 20/10-82J/8AS Part II
SOLD AS LOR 20/10

CURVE DATA & SURVEY
PI 773-02.88
A = 2° 30' 00" L
D = 0724'
T = 208.82'
L = 717.08'
E = 44.81'
R = 14323.84'

CURVE DATA & SURVEY
PI 810-01.89
A = 7° 30' 00" L
D = 0033'
T = 370.96'
L = 740.74'
E = 22.23'
R = 5708.58'

PI 828-09.44
A = 7° 30' 00" L
D = 0743.0706'
T = 280.529'
L = 520.855'
E = 44.52'
R = 763.44'



EXIST. E/W CURVE DATA SR 10
PC 74748.82 PCC 7490.0025 PCT 75574.55 67
PI 74833.88 PI 75270.33 RT 75612.36
PCL 74800.25 PCC 75045.67 RT 75678.00
A = 2° 00' 00" L A = 17° 34' 30" RT A = 2° 00' 00" L
D = 7.50' D = 7.50' D = 7.50'
T = 18.87' T = 324.08' T = 18.87'
L = 0.833' L = 645.42' L = 0.833'
E = 0.38' E = 16.27' E = 0.38'
R = 388.5' R = 2884.76' R = 388.5'

CURVE DATA & SURVEY
PI 837-16.80
A = 0° 48' 47" L
D = 0748.0108'
T = 587.027'
L = 171.87'
E = 22.579'
R = 7818.44'

RECEIVED FOR RECORD
AT 11:32 A.M.
MAR 7 - 1968
RECORDED IN LORAIN
COUNTY RECORDS
Vol. 85 Page 40
LEOTA B. MITCHELL
Lorain County Recorder

1296
25/20

LOR 20/10 - 82J/8AS PART II SOLD AS LOR 20/10

CENTERLINE SURVEY PLAT

25/20

25/20