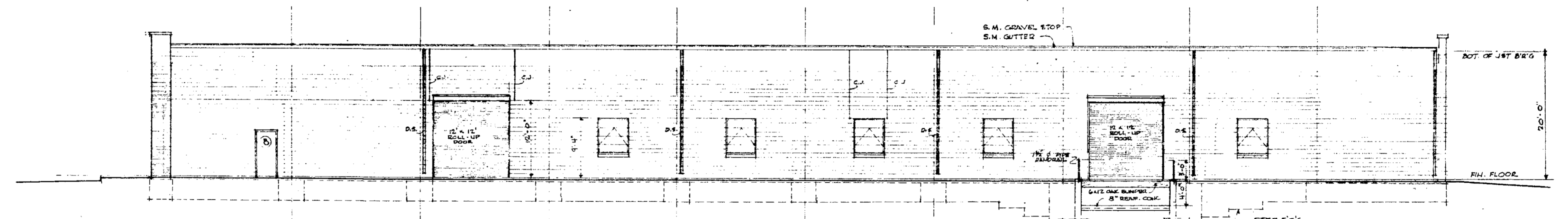
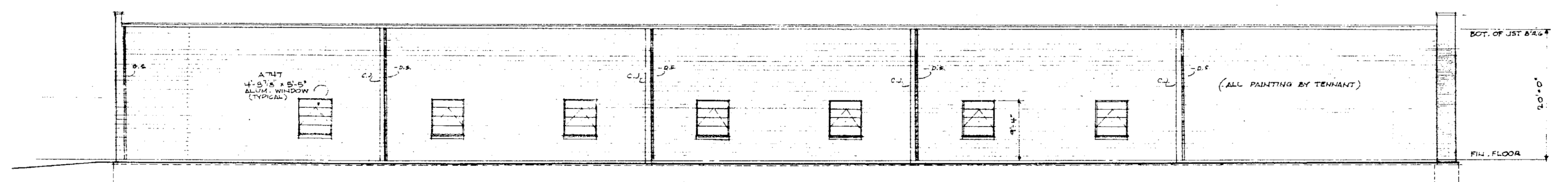


NORTH ELEVATION 1/8" = 1'-0"

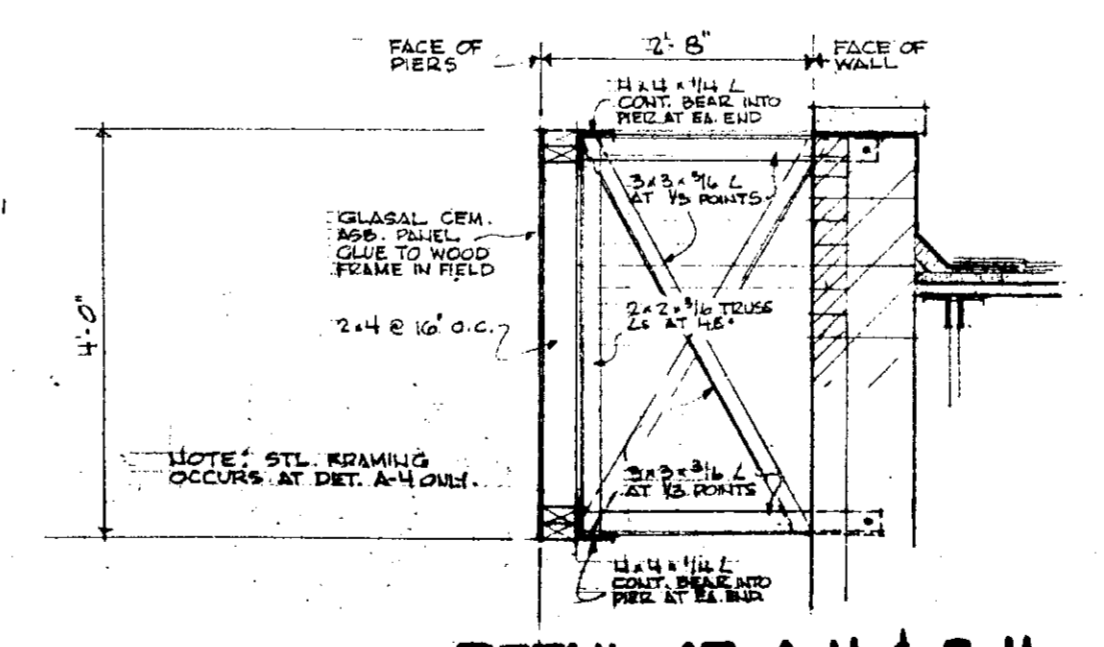
SOUTH ELEVATION 1/8" = 1'-0"



EAST ELEVATION 1/8" = 1'-0"



WEST ELEVATION 1/8" = 1'-0"



DETAIL AT A-4 & B-4 3/4" = 1'-0"

24/92

	<b>GENERAL ELECTRIC FACTORY</b> AVON INDUSTRIAL PARK AVON, OHIO	SHEET NO. <b>4</b> OF 6
	<b>WILLIAM S. UNGER ARCHITECT</b> 1170 N. RIDGE RD. E. LORAIN, OHIO REV. 1-27-67 REV. 8-15-67 2-11-67	

24/92