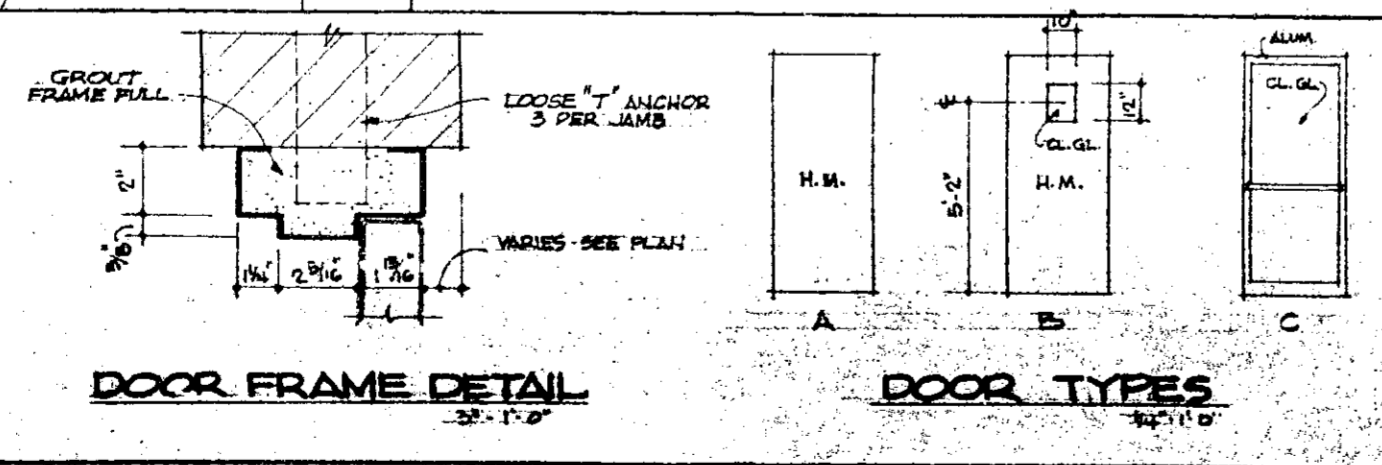


LOOSE LINTEL SCHEDULE

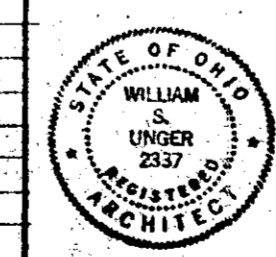
THIS SCHED. IS FOR LINTELS NOT OTHERWISE NOTED ON DRAWING.
EACH ANGLE SHALL BE PROVIDED FOR EA. 1/4" OF WALL THICKNESS.

| SPAN LIMITS | SIZE OF ANGLES | DETAIL |
|---------------|-----------------------|--------|
| 0' - 4'-0" | 3 1/2 x 3 1/2 x 1/4 L | 6" |
| 4'-1' - 5'-0" | 4 x 3 1/2 x 1/4 L | 6" |
| 5'-1' - 7'-0" | 5 x 3 1/2 x 3/16 L | 6" |
| 7'-1' - 9'-0" | 6 x 3 1/2 x 3/16 L | 6" |



DOOR SCHEDULE

| NO. | SIZE | TYPE | FRAME | REMARKS |
|-----|------------------------|---------|----------|--|
| 1 | 8'-0" x 7'-0" x 1 1/2" | C ALUM. | ALUMINUM | ALUM. TR. PUSH BAR, PULL HANDLE, CLOSER & CH. LOCK |
| 2 | 8'-0" x 7'-0" x 1 1/2" | A H.M. | H.M. | LOCKSET - 12" x 12" LOUVER |
| 3 | 2'-4" x 7'-0" x 1 1/2" | A H.M. | H.M. | PULLER & PULL & CLOSER - 12" x 12" LOUVER |
| 4 | 2'-4" x 7'-0" x 1 1/2" | A H.M. | H.M. | do |
| 5 | 2'-4" x 7'-0" x 1 1/2" | A H.M. | H.M. | do |
| 6 | 5'-0" x 7'-0" x 1 1/2" | B H.M. | H.M. | ALUM. TR. LOCKSET - CLOSER |
| 7 | 3'-0" x 7'-0" x 1 1/2" | B H.M. | H.M. | ALUM. TR. LOCKSET - CLOSER |



GENERAL ELECTRIC FACTORY
AVON INDUSTRIAL PARK AVON, OHIO

WILLIAM S. UNGER ARCHITECT
4170 N. BROWN ST., CLEVELAND, OHIO
REV. 2-27-67 REV. 5-15-67 2-N.Y.T.

SHEET NO. **3**