

672850

672850

W

NIMROD PARK SUBDIVISION

SITUATED IN THE TOWNSHIP OF LAGRANGE, COUNTY OF LORAIN, STATE OF OHIO, AND BEING PART OF ORIGINAL LAGRANGE TOWNSHIP LOT NUMBERS 82, 83, 98, 99, BY JAMES H. SCHMIDT, REGISTERED SURVEYOR

OWNER'S CERTIFICATE

This is to certify that Nimrod Club, Inc., being the undersigned owner of all the lands embraced within the boundaries of Nimrod Park Subdivision, does hereby acknowledge that the within plat correctly represents its subdivision of the lands shown therein and that it does accept the same.

The undersigned does hereby declare and agree that all of the lands within the boundaries of the Subdivision shall be subject to the "Covenants, Easements and Reservations" recorded in Deed Volume 902 Page 641 of Lorain County Records which are incorporated herein by reference; as provided therein all roads, ways, and easements shown herein shall be private except the portions of Webster Road, Whitehead Road and Nickel-Plate Diagonal Road dedicated prior hereto as public roads.

The undersigned further grants unto Keystone Local School District, and its successors, the exclusive option for 18 months following recordation of this plat to acquire Block E as shown on this page, for the sole purpose of a public school site, at such price and terms as shall be agreed upon by the parties by negotiation or by eminent domain proceedings.

NIMROD CLUB, INC.

By: Arthur E. Yates
Arthur E. Yates, President

By: James C. Browning
James C. Browning, Secretary

STATE OF OHIO
SS
LORAIN COUNTY

This is to certify that before me, a Notary Public in and for said County and State, did personally appear the above signed Nimrod Club, Inc. by its President, Arthur E. Yates, and its Secretary, James C. Browning, its Secretary, James C. Browning, who acknowledge the signing of this plat to be their own free act and deed and the free act and deed of said corporation.

IN TESTIMONY WHEREOF, I have hereunto set my hand this 26th day of May, 1965.

Kenneth C. Hamilton
Notary Public
NO EXPIRATION DATE

OWNER'S CERTIFICATE

This is to certify that Lee Dernier, single, holding record title to a part of the lands within the boundaries of this plat of Nimrod Park Subdivision, does hereby acknowledge that the within plat correctly represents the said subdivision of the lands shown therein and that he does accept the same, and that he does further join in and consent to the covenants, easements and reservations referred to above and the option set forth in the Owner's Certificate above.

Lee Dernier
Lee Dernier

STATE OF OHIO
SS
LORAIN COUNTY

This is to certify that before me, a Notary Public in and for said County and State, did personally appear the above signed Lee Dernier who acknowledges the signing of this plat to be his free act and deed. IN TESTIMONY WHEREOF, I have hereunto set my hand this 26th day of MAY, 1965.

Kenneth C. Hamilton
Notary Public
NO EXPIRATION DATE

ACREAGE CHART

ORIGINAL LOT	82	83	98	99	TOTAL
NIMROD LAKE	—	—	2.76	3.83	6.59
PRIVATE ROADS & EASE.	1.80	4.06	18.32	19.92	44.10
PUBLIC ROADS	0.12	0.33	3.04	0.39	3.88
SUBLOTS & BLOCKS	1.33	13.77	6.98	49.70	134.60
TOTAL	3.25	18.16	33.92	101.84	217.17

Lorain County Regional Planning Commission does hereby certify that on the 27 day of May, 1965, it did hereby approve the within plat of Nimrod Park Subdivision.

Robert W. McGinnis
Director

SURVEYOR'S CERTIFICATE

This is to certify that at the request of the owners, we have surveyed and platted Nimrod Park Subdivision as shown herein. Distances are shown in feet and decimal points thereof. Iron pin monuments found or to be set are shown thus —●— Heavy black line indicates outline of the subdivision. This plat embraces 217.17 acres of land in Original Lagrange Township Lots Nos. 82, 83, 98, & 99 in accordance with the chart set forth hereon, inclusive of land to the center lines of Nickel Plate Diagonal Road, Webster Road and Whitehead Road where so indicated, all of which we certify to be correct.

James H. Schmidt
James H. Schmidt,
Registered Surveyor No. 4946

Gary B. Penfound
Gary B. Penfound,
Registered Surveyor No. 4457

MORTGAGEE'S CERTIFICATE

The undersigned mortgagee does hereby consent to the within plat, covenants, easements and reservations referred to hereon and the dedication of that portion of Nickel Plate Diagonal Road, Webster Road and Whitehead Road shown therein for road purposes.

THE NORTHERN SAVINGS & LOAN COMPANY

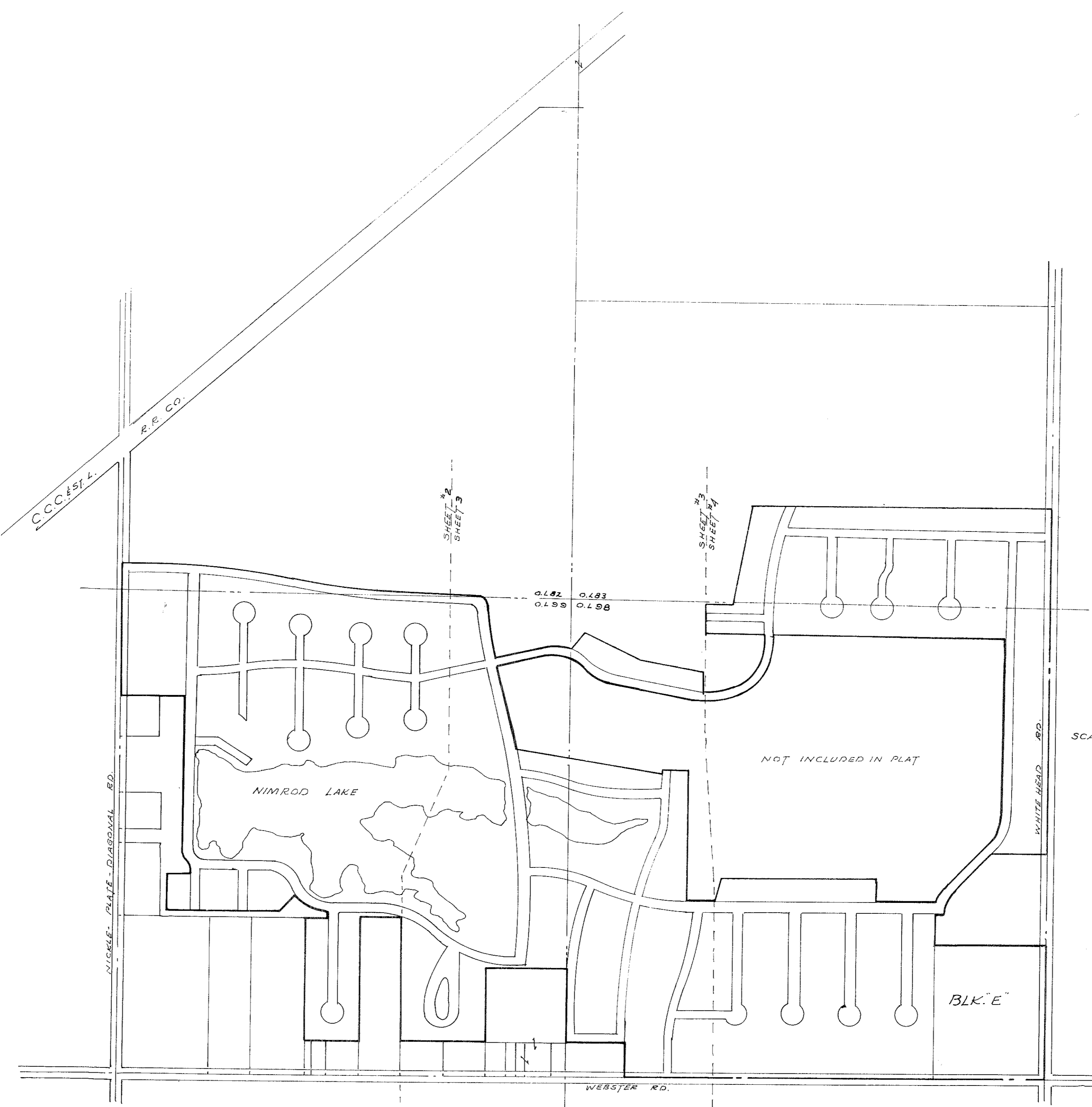
By: L.D. Huffman, Pres.
By: August Hubbard, Secy.

STATE OF OHIO
SS
LORAIN COUNTY

This is to certify that before me, a Notary Public in and for said County and State, did personally appear the above signed The Northern Savings & Loan Company by its PRES., L.D. HUFFMAN, and its SECRETARY, EUGENE HUBBARD, who acknowledge the signing of this plat to be their own free act and deed and the free act and deed of said corporation.

IN TESTIMONY WHEREOF, I have hereunto set my hand this 27 day of MAY, 1965.

Kenneth C. Hamilton
Notary Public
NO EXPIRATION DATE

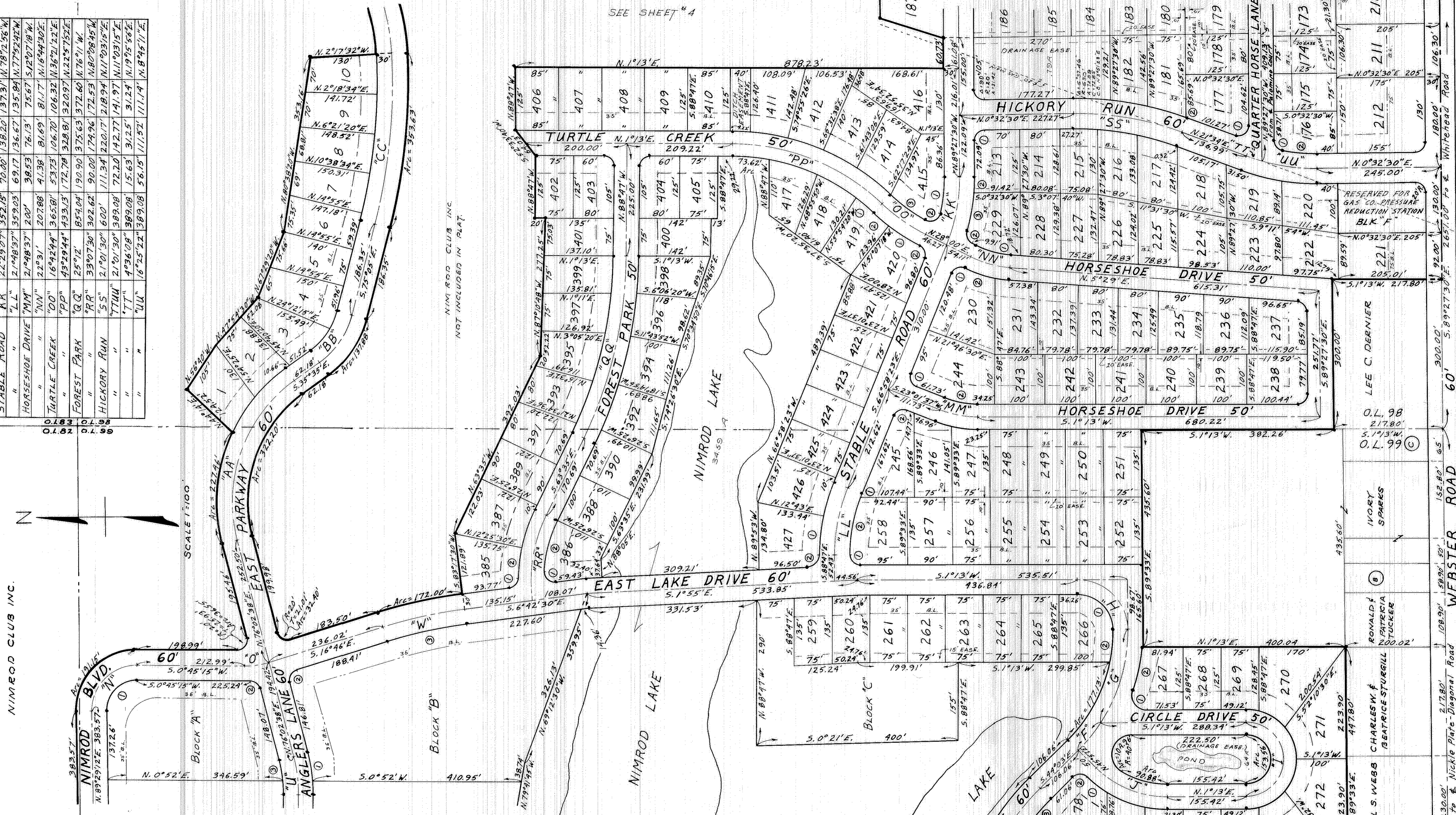


TRANSFERRED
JUL 1 1965
Lorain County Auditor

ROAD	CURVE Δ	RAD.	TAN.	ARC	CHORD	CHD BEARING
LAKESIDE DRIVE	"E"	45°30'	500	209.67	397.06	386.71 S.66°48'E.
"	"F"	45°30'	336.61	141.51	267.31	5.66°48'E.
"	"G"	11°55'04"	351.4	70.02	62.89	5.50°20'32"E.
"	"H"	33°34'56"	336.61	101.57	192.29	149.48 S.72°45'52"E.
"	"I"	89°14'	100	98.67	155.74	149.47 N.45°50'E.
CIRCLE DRIVE	"J"	180°00'	73.88	232.10	477.6	N.88°47'W.
"	"K"	44°44'	200.59	82.54	156.61	152.66 S.43°52'W.
NIMROD BOULEVARD	"L"	91°16'03"	90	92.01	143.36	128.68 S.44°52'W.
"	"M"	173°15'	162.23	250.0	493.61	49.42 S.80°27'E.
ANGLERS LANE	"N"	149°22'	300	390.2	776.1	77.39 N.88°27'19"E.
EAST LAKE DRIVE	"O"	10°33'30"	949.77	83.58	166.73	166.51 S.11°44'15"E.
EAST PARKWAY	"P"	68°22'22"	300	203.78	359.80	337.14 S.69°26'11"E.
"	"Q"	39°30'	170	61.04	117.20	114.89 S.55°20'E.
STABLE ROAD	"R"	172°32'	147.38	173.61	344.62	343.32 S.83°11'16"E.
"	"S"	22°29'07"	352.15	70.00	138.20	137.31 N.78°25'W.
HORSESHOE DRIVE	"T"	2°48'37"	359.03	69.17	136.67	135.84 N.77°52'46"W.
"	"U"	2°48'37"	202.88	38.53	76.13	75.67 S.27°18'W.
"	"V"	22°31'	202.88	41.38	81.69	81.71 N.16°44'30"W.
TURTLE CREEK	"W"	16°42'44"	365.81	53.73	106.70	106.32 N.36°21'32"E.
FOREST PARK	"X"	43°29'44"	433.13	172.78	328.81	320.97 S.22°75'52"E.
"	"Y"	25°12'	854.04	190.90	375.63	372.60 N.76°11'W.
HICKORY RUN	"Z"	33°07'30"	302.62	90.00	174.96	172.53 N.80°08'45"W.
"	"AA"	21°01'30"	600	111.34	220.17	218.94 N.11°03'15"E.
"	"AB"	21°01'30"	389.08	72.20	142.77	141.97 N.11°03'15"E.
"	"AC"	4°36'09"	389.08	15.63	31.25	31.24 N.19°55'56"E.
"	"AD"	16°25'22"	389.08	58.15	111.52	111.14 N.8°45'11"E.

BLOCK	Δ	RAD.	TAN.	ARC	CHORD	CHD BEARING
A	91°16'03"	60	61.34	95.58	85.79	S.44°42'46"E.
B	25°17'43"	330	82.00	81.79	55.72	S.72°09'18"E.
C	5°52'56"	270	15.93	26.28	24.43	S.42°54'18"E.
D	85°27'38"	330	41.83	91.79	180.80	S.80°58'58"E.
E	87°11'22"	20	19.04	30.43	27.58	S.60°21'44"E.
F	10°03'30"	919.77	80.94	161.47	317.25	S.11°44'15"E.

SUB LOT	Δ	RAD.	TAN.	ARC	CHORD	CHD BEARING
1	14°41'4"	330	82.00	81.79	55.72	S.72°09'18"E.
2	14°41'4"	330	82.00	81.79	55.72	S.72°09'18"E.
3	25°17'43"	330	82.00	81.79	55.72	S.72°09'18"E.
4	15°34'	140	58.40	58.06	47.93	S.47°31'E.
5	15°34'	140	58.40	58.06	47.93	S.47°31'E.
6	4°48'08"	117.38	80.00	15.61	15.61	S.75°52'39'E.
7	4°48'08"	117.38	80.00	15.61	15.61	S.75°52'39'E.
8	4°48'08"	117.38	80.00	15.61	15.61	S.75°52'39'E.
9	4°48'08"	117.38	80.00	15.61	15.61	S.75°52'39'E.
10	4°48'08"	117.38	80.00	15.61	15.61	S.75°52'39'E.
11	78°56'52"	20	69.27	27.56	25.93	N.57°04'04"E.
12	11°01'30"	20	29.11	38.76	32.87	N.39°45'45"E.
13	7°58'32"	630	3.53	5.53	5.53	N.79°40'29"E.
14	7°58'32"	630	3.53	5.53	5.53	N.79°40'29"E.
15	90°00'	20	20	76.22	76.18	N.10°28'14"E.
16	90°00'	20	20	31.42	29.28	N.44°27'30"W.
17	4°56'24"	382.15	32.94	62.24	148.65	N.86°59'06"W.
18	4°56'24"	382.15	32.94	62.24	148.65	N.86°59'06"W.
19	4°56'24"	382.15	32.94	62.24	148.65	N.86°59'06"W.
20	4°56'24"	382.15	32.94	62.24	148.65	N.86°59'06"W.
21	4°56'24"	382.15	32.94	62.24	148.65	N.86°59'06"W.
22	4°56'24"	382.15	32.94	62.24	148.65	N.86°59'06"W.
23	4°56'24"	382.15	32.94	62.24	148.65	N.86°59'06"W.
24	4°56'24"	382.15	32.94	62.24	148.65	N.86°59'06"W.
25	4°56'24"	382.15	32.94	62.24	148.65	N.86°59'06"W.
26	4°56'24"	382.15	32.94	62.24	148.65	N.86°59'06"W.
27	4°56'24"	382.15	32.94	62.24	148.65	N.86°59'06"W.
28	4°56'24"	382.15	32.94	62.24	148.65	N.86°59'06"W.
29	4°56'24"	382.15	32.94	62.24	148.65	N.86°59'06"W.
30	4°56'24"	382.15	32.94	62.24	148.65	N.86°59'06"W.
31	4°56'24"	382.15	32.94	62.24	148.65	N.86°59'06"W.
32	4°56'24"	382.15	32.94	62.24	148.65	N.86°59'06"W.
33	4°56'24"	382.15	32.94	62.24	148.65	N.86°59'06"W.
34	4°56'24"	382.15	32.94	62.24	148.65	N.86°59'06"W.
35	4°56'24"	382.15	32.94	62.24	148.65	N.86°59'06"W.
36	4°56'24"	382.15	32.94	62.24	148.65	N.86°59'06"W.
37	4°56'24"	382.15	32.94	62.24	148.65	N.86°59'06"W.
38	4°56'24"	382.15	32.94	62.24	148.65	N.86°59'06"W.
39	4°56'24"	382.15	32.94	62.24	148.65	N.86°59'06"W.
40	4°56'24"	382.15	32.94	62.24	148.65	N.86°59'06"W.
41	4°56'24"	382.15	32.94	62.24	148.65	N.86°59'06"W.
42	4°56'24"	382.15	32.94	62.24	148.65	N.86°59'06"W.
43	4°56'24"	382.15	32.94	62.24	148.65	N.86°59'06"W.
44	4°56'24"	382.15	32.94	62.24	148.65	N.86°59'06"W.
45	4°56'24"	382.15	32.94	62.24	148.65	N.86°59'06"W.
46	4°56'24"	382.15	32.94	62.24	148.65	N.86°59'06"W.
47	4°56'24"	382.15	32.94	62.24	148.65	N.86°59'06"W.
48	4°56'24"	382.15	32.94	62.24	148.65	N.86°59'06"W.
49	4°56'24"	382.15	32.94	62.24	148.65	N.86°59'06"W.
50	4°56'24"	382.15	32.94	62.24	148.65	N.86°59'06"W.
51	4°56'24"	382.15	32.94	62.24	148.65	N.86°59'06"W.
52	4°56'24"	382.15	32.94	62.24	148.65	N.86°59'06"W.
53	4°56'24"	382.15	32.94	62.24	148.65	N.86°59'06"W.
54	4°56'24"	382.15	32.94	62.24	148.65	N.86°59'06"W.
55	4°56'24"	382.15	32.94	62.24	148.65	N.86°59'06"W.
56	4°56'24"	382.15	32.94	62.24	148.65	N.86°59'06"W.
57	4°56'24"	382.15	32.94	62.24	148.65	N.86°59'06"W.
58	4°56'24"	382.15	32.94	62.24	148.65	N.86°59'06"W.
59	4°56'24"	382.15	32.94	62.24	148.65	N.86°59'06"W.
60	4°56'24"	382.15	32.94	62.24	148.65	N.86°59'06"W.
61	4°56'24"	382.15	32.94	62.24	148.65	N.86°59'06"W.
62	4°56'24"	382.15	32.94	62.24	148.65	N.86°59'06"W.
63	4°56'24"	382.15	32.94	62.24	148.65	N.86°59'06"W.
64	4°56'24"	382.15	32.94	62.24	148.65	N.86°59'06"W.
65	4°56'24"	382.15	32.94	62.24	148.65	N.86°59'06"W.
66	4°56'24"	382.15	32.94	62.24	148.65	N.86°59'06"W.
67	4°56'24"	382.15	32.94	62.24	148.65	N.86°59'06"W.
68	4°56'24"	382.15	32.94	62.24	148.65	N.86°59'06"W.
69	4°56'24"	382.15	32.94	62.24	148.65	N.86°59'06"W.
70	4°56'24"	382.15	32.94	62.24	148.65	N.86°59'06"W.
71	4°56'24"	382.15	32.94	62.24	148.65	N.86°59'06"W.
72	4°56'24"	382.15	32.94	62.24	148.65	N.86°59'06"W.
73	4°56'24"	382.15	32.94	62.24	148.65	N.86°59'06"W.
74	4°56'24"	382.15	32.94	62.24	148.65	N.86°59'06"W.
75	4°56'24"	382.15	32.94	62.24	148.65	N.86°59'06"W.
76	4°56'24"	382.15	32.94	62.24	148.65	N.86°59'06"W.
77	4°56'24"	382.15	32.94	62.24	148.65	N.86°59'06"W.
78	4°56'24"	382.15	32.94	62.24	148.65	N.86°59'06"W.
79	4°56'24"	382.15	32.94	62.24	148.65	N.86°59'06"W.
80	4°56'24"	382.15	32.94	62.24	148.65	N.86°59'06"W.
81	4°56'24"	382.15	32.94	62.24	148.65	N.86°59'06"W.
82	4°56'24"	382.15	32.94	62.24	148.65	N.86°59'06"W.
83	4°56'24"	382.15	32.94	62.24	148.65	N.86°59'06"W.
84	4°56'24"	382.15	32.94	62.24	148.65	N.86°59'06"W.
85	4°56'24"	382.15	32.94	62.24	148.65	N.86°59'06"W.
86	4°56'24"	382.15	32.94	62.24	148.65	N.86°59'06"W.
87	4°56'24"	382.15	32.94	62.24	148.65	N.86°59'06"W.
88	4°56'24"	382.15	32.94	62.24	148.65	N.86°59'06"W.
89	4°56'24"	382.15	32.94	62.24	148.65	N.86°59'06"W.
90	4°56'24"	382.15	32.94	62.24	148.65	N.86°59'06"W.
91	4°56'24"	382.15	32.94	62.24	148.65	N.86°59'06"W.
92	4°56'24"	382.15	32.94	62.24	148.65	N.86°59'06"W.
93	4°56'24"	382.15	32.94	62.24	148.65	N.86°59'06"W.
94	4°56'24"	382.15	32.94	62.24	148.65	N.86°59'06"W.
95	4°56'24"	382.15	32.94	62.24	148.65	N.86°59'06"W.
96	4°56'24"	382.15	32.94	62.24	148.65	N.86°59'06"W.
97	4°56'24"	382.15	32.94	62.24	148.65	N.86°59'06"W.
98	4°56'24"	382.15	32.94	62.24	148.65	N.86°59'06"W.
99	4°56'24"	382.15	32.94	62.24	148.65	N.86°59'06"W.
100	4°56'24"	382.15	32.94	62.24	148.65	N.86°59'06"W.

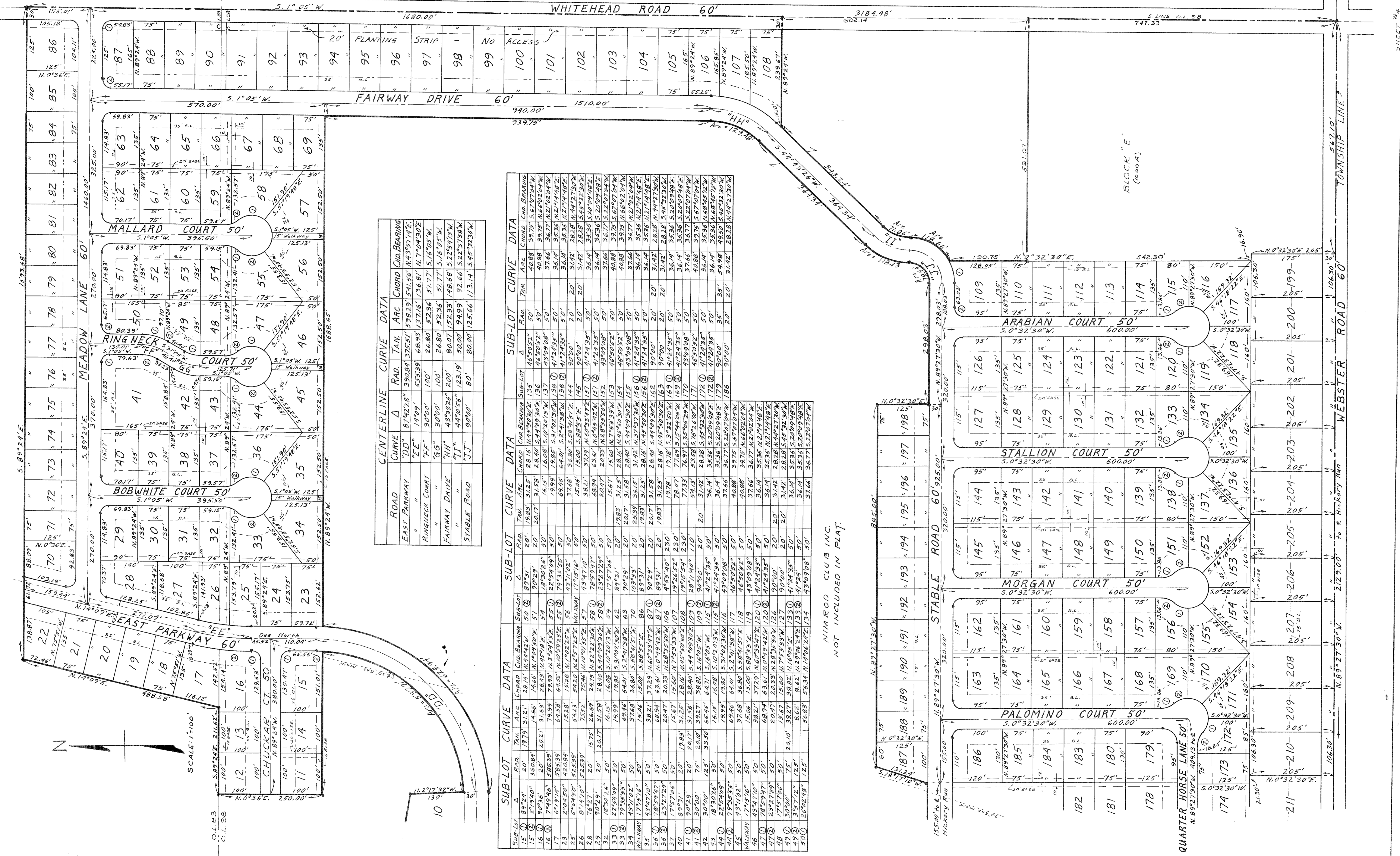


JOHN B. F. KETTEL R. KINTER
JOHN W. F. TEAN SPARKS

SEE SHEET #4

RECEIVED FOR RECORD

NIMROD CLUB INC.



CENTERLINE CURVE DATA

ROAD	CURVE Δ	RAD.	TAN.	ARC	CHORD	CHORD BEARING
EAST PARKWAY	100°	390.84	375.51	598.29	541.56	N43°57'14"E
"	100°	390.84	375.51	598.29	541.56	N43°57'14"E
RINGNECK COURT	100°	26.80	52.36	57.77	51.16	S16°05'W
"	100°	26.80	52.36	57.77	51.16	S16°05'W
FAIRWAY DRIVE	200°	80.07	152.33	148.68	122.59	S43°13'W
"	200°	80.07	152.33	148.68	122.59	S43°13'W
STABLE ROAD	80°	80.00	125.66	113.14	5.45	S23°30'W

SUB-LOT CURVE DATA

SUB-LOT	Δ	RAD.	TAN.	ARC	CHORD	CHORD BEARING
15	20°	197.9	31.21	28.16	2.80	N49°42'W
16	20°	197.9	31.21	28.16	2.80	N49°42'W
17	20°	197.9	31.21	28.16	2.80	N49°42'W
18	20°	197.9	31.21	28.16	2.80	N49°42'W
19	20°	197.9	31.21	28.16	2.80	N49°42'W
20	20°	197.9	31.21	28.16	2.80	N49°42'W
21	20°	197.9	31.21	28.16	2.80	N49°42'W
22	20°	197.9	31.21	28.16	2.80	N49°42'W
23	20°	197.9	31.21	28.16	2.80	N49°42'W
24	20°	197.9	31.21	28.16	2.80	N49°42'W
25	20°	197.9	31.21	28.16	2.80	N49°42'W
26	20°	197.9	31.21	28.16	2.80	N49°42'W
27	20°	197.9	31.21	28.16	2.80	N49°42'W
28	20°	197.9	31.21	28.16	2.80	N49°42'W
29	20°	197.9	31.21	28.16	2.80	N49°42'W
30	20°	197.9	31.21	28.16	2.80	N49°42'W
31	20°	197.9	31.21	28.16	2.80	N49°42'W
32	20°	197.9	31.21	28.16	2.80	N49°42'W
33	20°	197.9	31.21	28.16	2.80	N49°42'W
34	20°	197.9	31.21	28.16	2.80	N49°42'W
35	20°	197.9	31.21	28.16	2.80	N49°42'W
36	20°	197.9	31.21	28.16	2.80	N49°42'W
37	20°	197.9	31.21	28.16	2.80	N49°42'W
38	20°	197.9	31.21	28.16	2.80	N49°42'W
39	20°	197.9	31.21	28.16	2.80	N49°42'W
40	20°	197.9	31.21	28.16	2.80	N49°42'W
41	20°	197.9	31.21	28.16	2.80	N49°42'W
42	20°	197.9	31.21	28.16	2.80	N49°42'W
43	20°	197.9	31.21	28.16	2.80	N49°42'W
44	20°	197.9	31.21	28.16	2.80	N49°42'W
45	20°	197.9	31.21	28.16	2.80	N49°42'W
46	20°	197.9	31.21	28.16	2.80	N49°42'W
47	20°	197.9	31.21	28.16	2.80	N49°42'W
48	20°	197.9	31.21	28.16	2.80	N49°42'W
49	20°	197.9	31.21	28.16	2.80	N49°42'W
50	20°	197.9	31.21	28.16	2.80	N49°42'W

SEE SHEET #3