

# CENTER LINE SURVEY PLAT

LOR - 254 - 4.08 B  
LORAIN COUNTY

AMHERST TWP T6N, R18W  
LOT'S 59, 60, 61, 62, 79, 80, 81, & 82

ELYRIA TWP T6N, R17W  
LOT'S 1, 2, 4, 5, 7, 9, 10, 11, 13, 14, 15 & 16

FED. RD. DISTRICT	STATE	PROJECT
2	OHIO	

290  
323

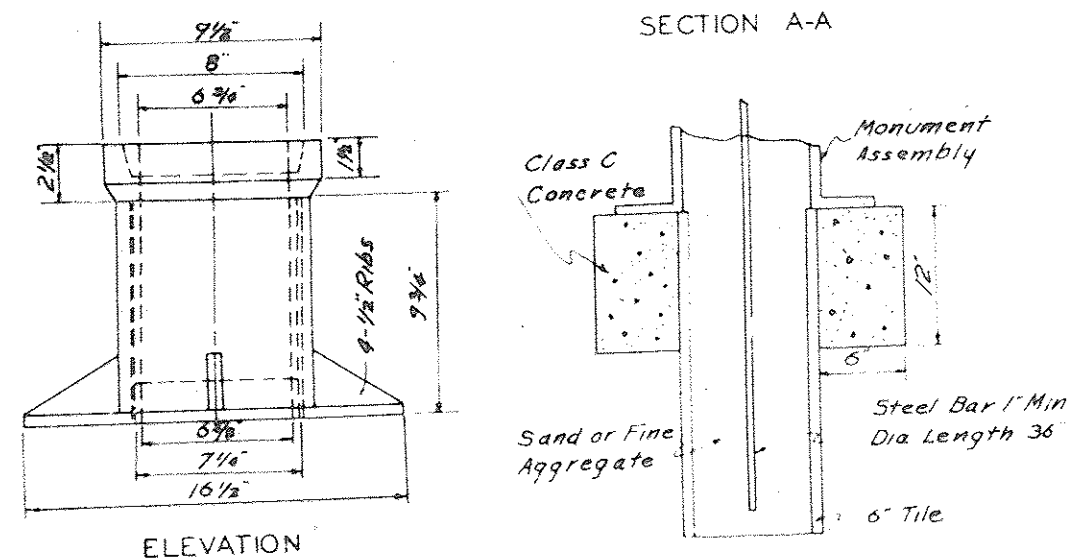
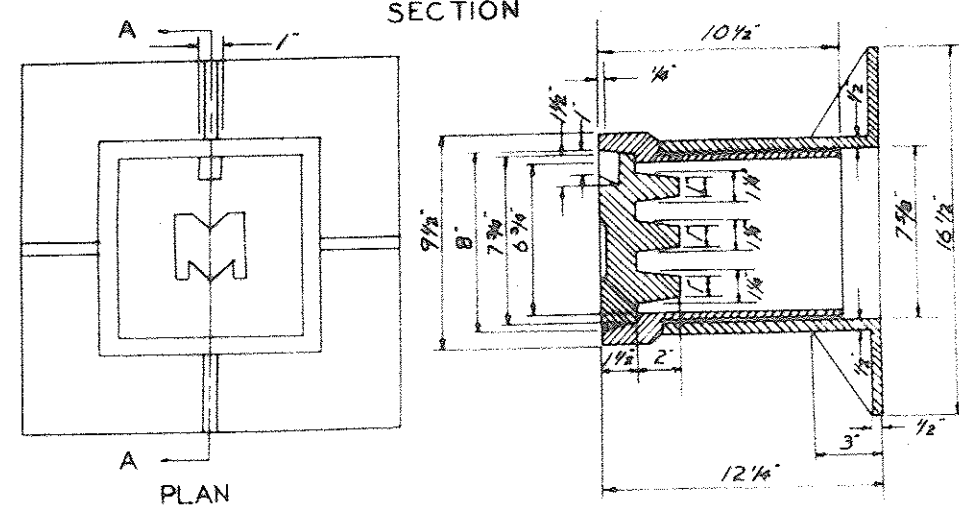
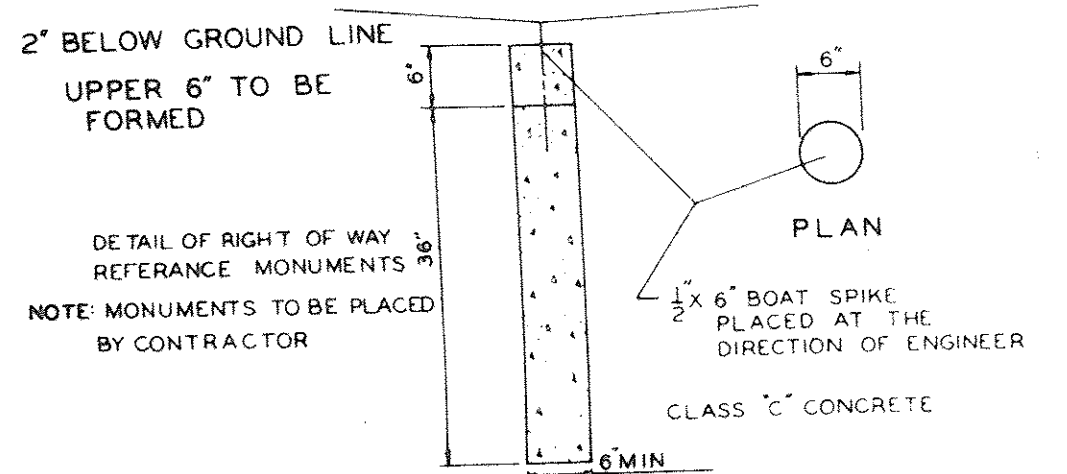
LOR-254-4.08 B  
CENTER LINE PLAT  
LIMITED ACCESS

1  
4

THIS IMPROVEMENT HAS BEEN DECLARED A LIMITED ACCESS ALONG C SURVEY LOR-254-4.08 B FROM STA 419+50.42 TO STA 653+42.67 ON THE LEFT AND FROM STA 420+04.03 TO STA 653+70.71 ON THE RIGHT, AND FROM STA 135+00 TO STA 176+46 ON THE LEFT OF SR 57 BY ACTION OF THE DIRECTOR OF HIGHWAYS AND RECORDED IN VOLUME PAGE OF THE DIRECTOR'S JOURNAL PURSUANT TO LAW.

LIMITED ACCESS

SYMBOL  
○ MONUMENTS  
■ SPECIAL MONUMENT ASSEMBLIES  
(SEE STANDARD DRAWING RI-1)



NOTE: The casting tile and rod will be furnished by the state.  
SPECIAL ADJUSTABLE MONUMENT ASSEMBLY  
1/2 or 1" Inserts for Various Heights

QUAN	STATION	LOCATION	REMARKS
North Ridge Road			
1	428+30.61	Q-5	PT
1	439+00	Q-5	POT
1	436+50	Q-5	POT
2	441+33.80	10 Rt-10 Lt	PC
1	451+00	Q-5	POC
1	456+33.31	Q-5	PT
1	466+00	Q-5	POT
1	476+99.12	Q-5	PC
1	481+16.20	Q-5	On PI
1	485+33.18	Q-5	PT
1	493+50.58	Q-5	PC
1	499+53.92	Q-5	PI
1	503+39.02	Q-5	Lot Corner
1	505+56.93	Q-5	PT
1	512+00	Q-5	POT
2	518+83.72	10 Rt-10 Lt	PC
1	527+50	Q-5	POC
1	533+50	Q-5	POC
1	540+00	Q-5	PT
1	544+99.35	Q-5	PT
1	555+00	Q-5	POT
1	562+00	Q-5	PT
1	567+71.32	Q-5	POC
1	576+00	Q-5	POC
1	584+00	Q-5	POC
1	593+00	Q-5	POC
1	594+30.03	Q-5	PT
1	608+00	Q-5	POT
1	617+00	Q-5	POT
1	627+00	Q-5	POT
1	637+00	Q-5	POT
1	647+00	Q-5	POT
West Ridge Road Relocated			
1	91+07.62	PI	On Lot Line
Existing West Ridge Road			
1	50167.15	Q-5	Lot Corner Line

36 TOTAL MONUMENT REFERENCE

QUAN	STATION	LOCATION	REMARKS
North Ridge Road			
1	68+00	Q-5	POT
1	72+00	Q-5	POT
Oberlin Road			
1	47+50	Q-5	POT
1	51+53.15	Q-5	PI Lot Line
Middle Ridge Road			
1	201+73	Q-5	PI
1	46+50	Q-5	POT
1	54+60	Q-5	POT
West Ridge Road Relocated			
1	36+78.04	PC	
1	44+15.26	PT	
Lake Ave			
1	66+43.40	Q-5	PI
1	74+33.59	Q-5	PI

11 TOTAL MONUMENT ASSEMBLIES

RECEIVED: Nov. 16 19 64  
RECORDED: Nov. 16 19 64  
PLAT BOOK 24 PAGE 14  
SIGNED: Leta B. Mitchell COUNTY RECORDER  
FEC 17.28  
SIGNED: D.H. Cramer P.E. NO. 24400  
DATE: 10-27-64 DIVISION DEPUTY DIRECTOR  
DIV. NO. 3

I HEREBY CERTIFY THIS PLAT TO BE A TRUE DELINEATION OF A SURVEY MADE BY SHAFFER, PARRETT & ASSOCIATES OF MANSFIELD & WOOSTER, OHIO.  
DATE: 8-4-64 BY: [Signature]  
REGISTER CIVIL ENGINEER 16600  
REGISTER SURVEYOR 3828

PREPARED BY  
SHAFFER, PARRETT & ASSOCIATES  
CONSULTING ENGINEERS

MANSFIELD OHIO NO. 5114

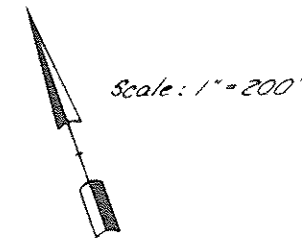
CENTER LINE SURVEY PLAT



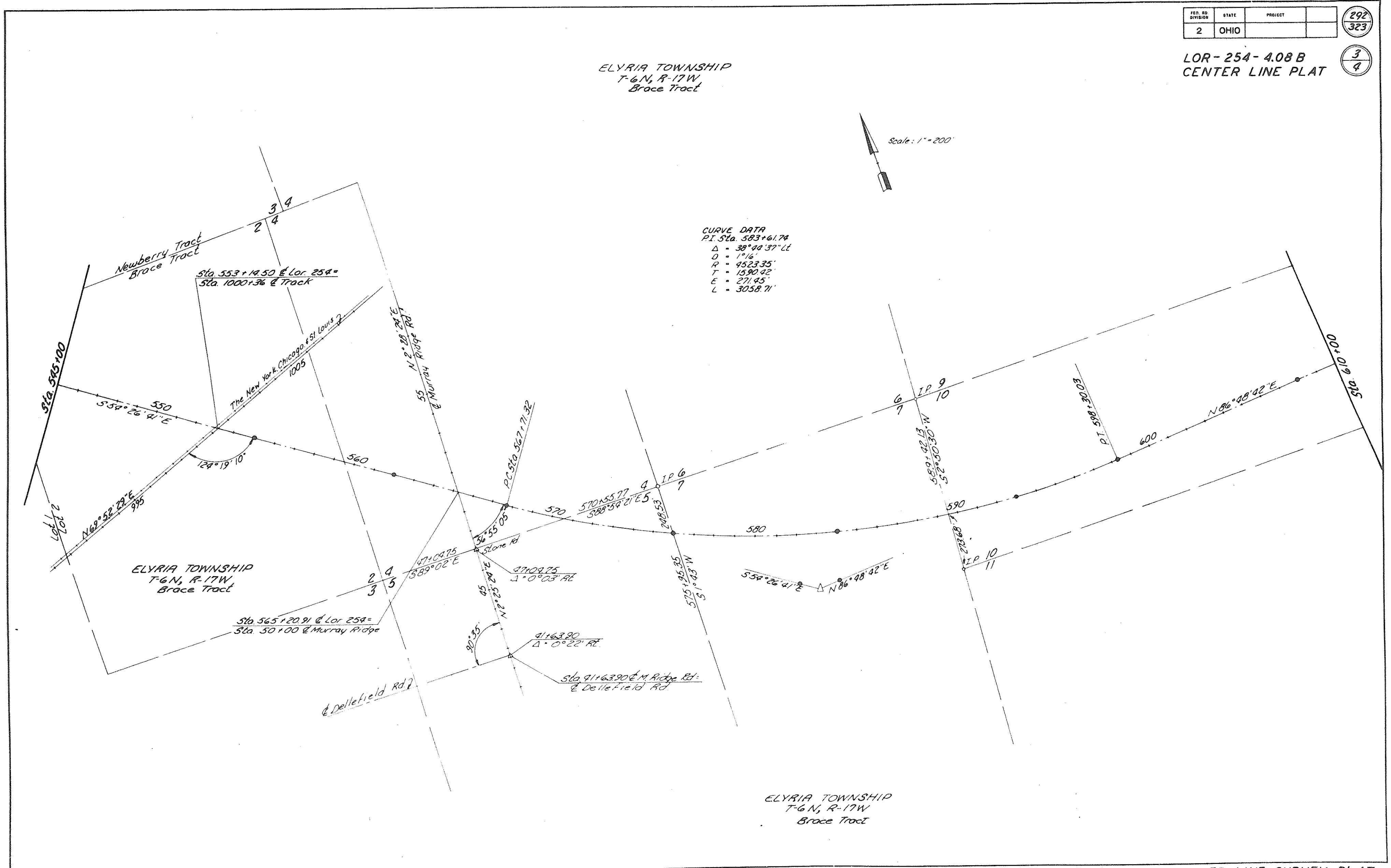
FED. RD. DIVISION	STATE	PROJECT	292
2	OHIO		323

LOR-254-4.08 B  
 CENTER LINE PLAT

ELYRIA TOWNSHIP  
 T-6N, R-17W  
 Brace Tract



CURVE DATA  
 P.I. Sta. 583+61.74  
 $\Delta = 38^{\circ}44'37''$  LL  
 $D = 1^{\circ}16'$   
 $R = 4523.35'$   
 $T = 1590.42'$   
 $E = 271.45'$   
 $L = 3058.71'$



661712

FED. RD. DIVISION	STATE	PROJECT
2	OHIO	

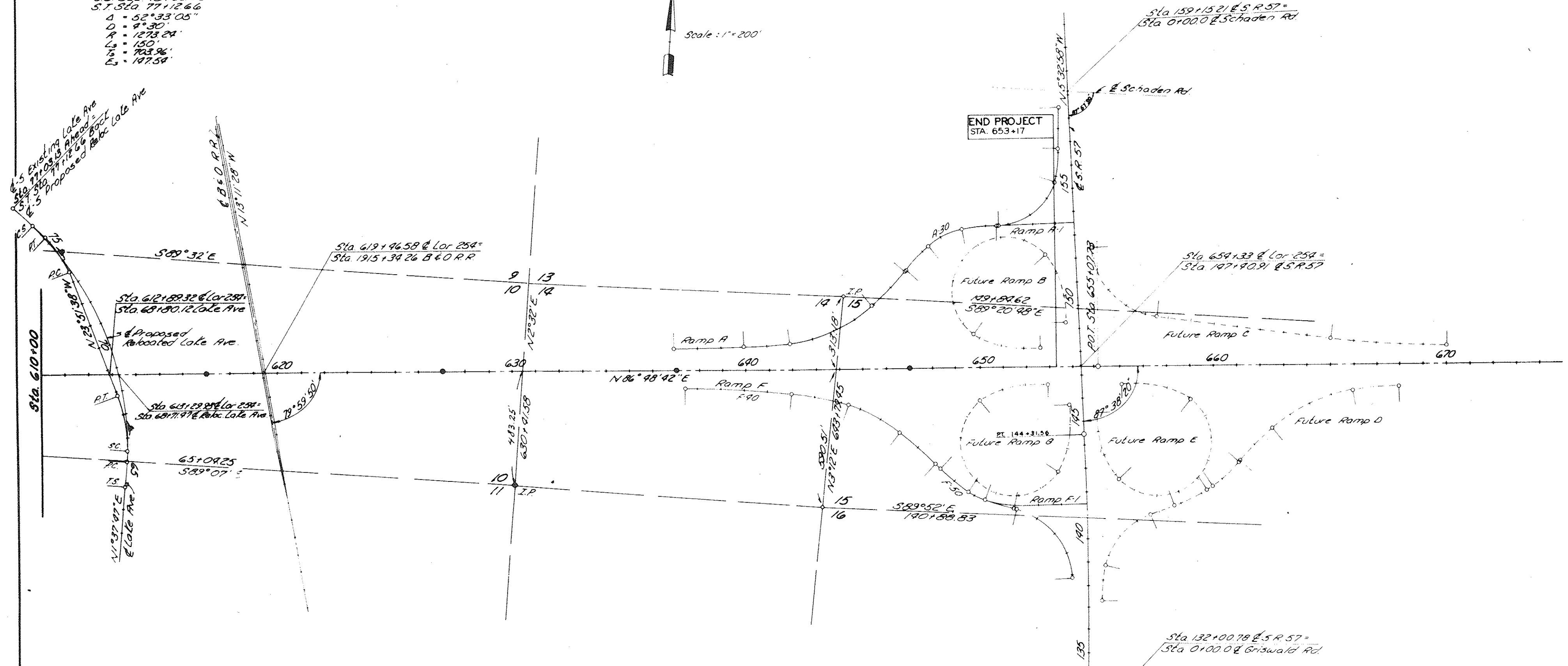
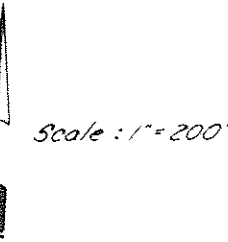
293  
323

LOR-254-4.08 B  
CENTER LINE PLAT

4  
4

ELYRIA TOWNSHIP  
T-6N, R-17W  
Brace Tract

Proposed Relocated  
Lake Ave  
Curve Data  
T.C. Sta 63+24.85  
S.C. Sta 65+24.85  
P.I. Sta 70+24.85  
C.B. Sta 75+24.66  
S.T. Sta 77+12.66  
Δ = 52°33'05"  
D = 4°30'  
R = 1273.24'  
L = 150'  
E = 183.96'  
L = 197.54'



Existing Lake Ave  
Curve Data  
P.C. Sta 64+22.90  
P.T. Sta 66+22.90  
P.I. Sta 67+22.63  
Δ = 25°25'25" LL  
D = 3°00'  
R = 636.62'  
T = 188.00'  
E = 16.08'  
L = 283.23'

Existing Lake Ave  
Curve Data  
P.C. Sta 73+41.0  
P.I. Sta 74+33.59  
P.T. Sta 75+22.62  
Δ = 27°03'40" LL  
D = 14°54'  
R = 394.55'  
T = 92.54'  
E = 10.93'  
L = 181.62'

ELYRIA TOWNSHIP  
T-6N, R-17W  
Brace Tract

RECEIVED FOR RECORD  
AT 10:23 AM

NOV 16 1964

RECORDED IN LORAIN  
COUNTY RECORDS

Plot Vol 24 Page 14

LEOTA B. MITCHELL  
Lorain County Recorder

# 17 28

Curve Data - Exist S.R.57  
P.I. Sta 131+88.74  
Δ = 8°18'0" LL  
D = 0°20'  
R = 1718.74'  
T = 1247.18'  
L = 2450.0'  
E = 45.19'