

# CENTER LINE SURVEY PLAT

**LIMITED ACCESS**  
 THIS IMPROVEMENT HAS BEEN DECLARED A LIMITED ACCESS HIGHWAY FROM STA 176+46.33 TO STA 422+71.72 ON THE LEFT AND FROM STA 176+50.00 TO STA 423+37.28 ON THE RIGHT BY ACTION OF THE DIRECTOR OF HIGHWAYS AND RECORDED IN VOLUME \_\_\_\_\_ PAGE \_\_\_\_\_ OF THE DIRECTOR'S JOURNAL PURSUANT TO LAW

LOR-254-0.00 B  
 LORAIN COUNTY  
 CITY OF AMHERST  
 BROWNHELM TWP T 6N R 19W  
 LOTS 23, 24, 25, 26  
 AMHERST TWP T6N R 18W  
 LOTS 98, 99, 1, 2, 19, 20, 21, 22, 40, 41, 60

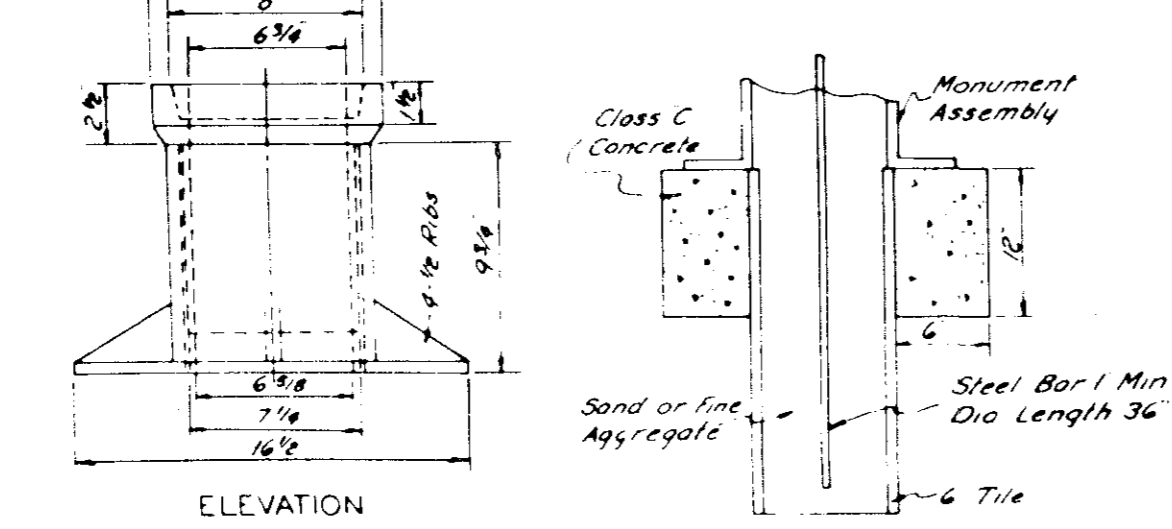
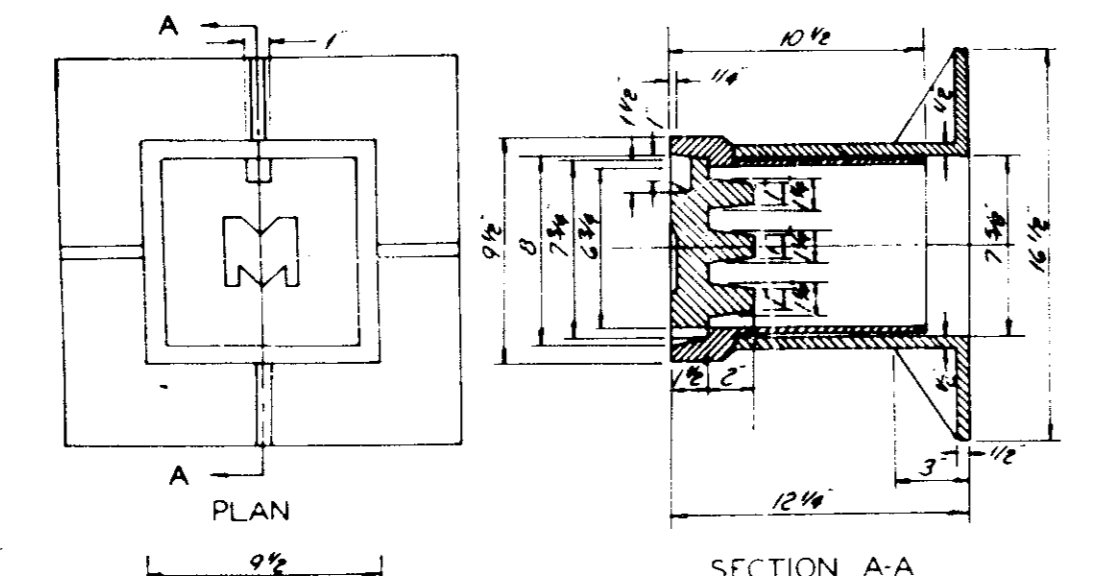
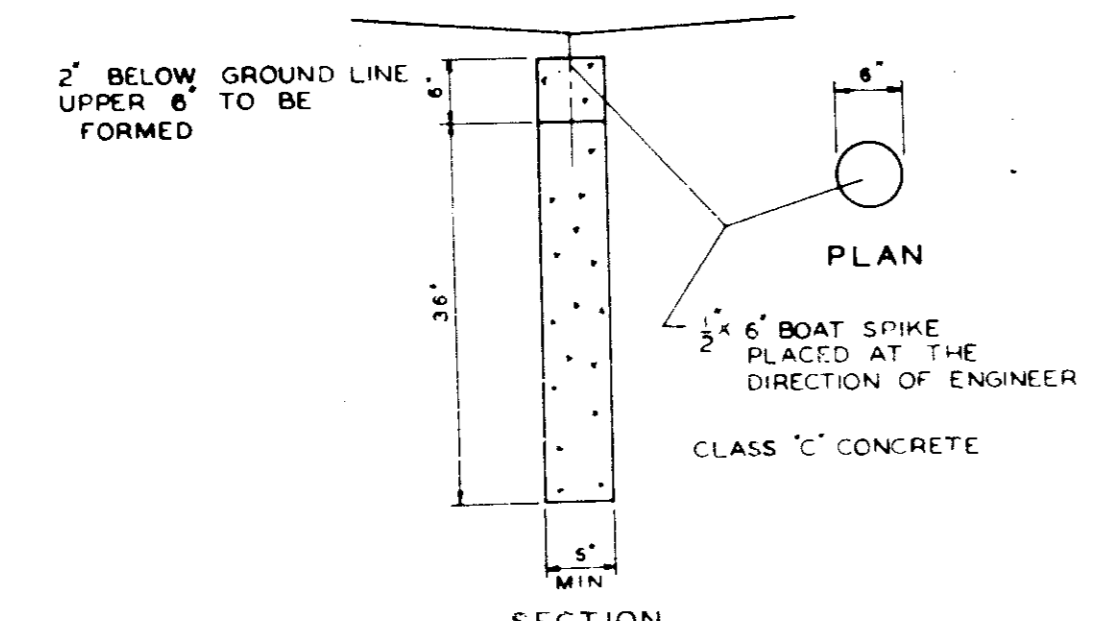
FED. RD. DIST. NO.	STATE	PROJECT
2	OHIO	

LOR-254-0.00 B  
 CENTER LINE PLAT  
 LIMITED ACCESS

#653244

**QUANTITIES**  
 43 - REFERENCE MONUMENTS  
 22 - MONUMENT ASSEMBLIES

**SYMBOL**  
 ○ REFERENCE MONUMENT  
 ● SPECIAL MONUMENT ASSEMBLIES (SEE STANDARD DRAWING RI-1)



SPECIAL ADJUSTABLE MONUMENT ASSEMBLY  
 1/2 or 1 Inserts for Various Heights

STATION	LOCATION	REMARKS
179+00	E.S.	POT
187+00	E.S.	POT
191+28.99	E.S.	PC
203+00	E.S.	POC
210+00	E.S.	PT
218+23.80	On Tang	PI
219+57.05	E.S.	SC or PCC
226+00	E.S.	PCC
233+00	E.S.	PCC
240+00	E.S.	PCC
245+23.95	E.S.	PCC
248+10.62	E.S.	PT
258+00	E.S.	POT
262+16.19	5' L x 5' R	PC
268+14.19	6' L x 5' R	PCC
275+00	E.S.	PCC
282+00	E.S.	PCC
289+21.68	E.S.	PCC
291+21.68	E.S.	PT
301+00	E.S.	POT
315+00	E.S.	POT
322+28.28	E.S.	PC
331+30.06	E.S.	PT
340+50	E.S.	POT
351+50	E.S.	POT
361+29.45	E.S.	PC
368+00	E.S.	PCC
375+22.35	E.S.	POT
385+00	E.S.	POT
391+00	E.S.	POT
399+14.67	E.S.	PC
405+00	E.S.	PCC
414+00	E.S.	PCC
421+00	E.S.	PCC

STATION	LOCATION	REMARKS
Cooper Foster Park Road Relocated		
216+43.81	On Tang	PI
Grosse Road		
6+00	On Tang	PI
11+00.61	On Tang	PI
Sewage Treatment Plant Road		
7+30.58	On Tang	PI
8+38.49	On Tang	PI
Denny Road		
18+00	E	POT
52+00	E	POT

STATION	LOCATION	REMARKS
309+36.34	E.S.	POT
Cooper Foster Park Road Relocated		
176+53.14	E	PC
180+88.14	E	PC
181+29.46	E	PC
191+00	E	PT
195+75.89	E	PT
211+54.11	E	PC
213+08.20	E	PC
219+75.34	E	PT
233+38.75	E	PC
107+08.02	E	PT
Grosse Road		
1835.37	On Tang	PI
1843.72	E	PI, No. 1
Out Point Road		
80+00	E	POT
53+50.38	E	PI
50+00	E	POT
Sewage Treatment Plant Road Reloc		
19+09.35	E	PI, No. 1
Kolbe Road		
41+56.52	PI	List & P.I. Relec
46+30.06	PI	
52+00	E	POT
Denny Road		
42+00	E	POT
55+00	E	POT

RECEIVED June 24 1964  
 RECORDED June 24 1964  
 PLAT BY [Signature] PAGE 2  
 SIGNED [Signature] COUNTY RECORDER

SIGNED [Signature] P.E. NO. 24400  
 DATE 6-19-64 DIVISION DEPUTY DIRECTOR  
 DIV. NO. 3

Fee 17.28

NOTE - SPECIAL ADJUSTABLE MONUMENT ASSEMBLIES AS SHOWN HEREON ARE TO BE PLACED DURING CONSTRUCTION ON T-71 PAVEMENTS AND AFTER THE LEVELING COURSE AND PRIOR TO PLACING THE SURFACE COURSES ON T-35 PAVEMENTS. ALL MONUMENTS ARE TO BE PLACED UNDER THE DIRECTION OF THE PROJECT ENGINEER.

I HEREBY CERTIFY THIS PLAT TO BE A TRUE DELINEATION OF A SURVEY MADE BY SHAFFER, PARRETT & ASSOCIATES OF MANSFIELD & WOOSTER, OHIO.  
 DATE 5/21/64 BY [Signature]  
 REGISTER CIVIL ENGINEER 6680  
 REGISTER SURVEYOR 3228

24/2

PREPARED BY  
**SHAFFER, PARRETT & ASSOCIATES**  
 CONSULTING ENGINEERS  
 MANSFIELD OHIO WOOSTER  
 CENTER LINE SURVEY PLAT

# CENTER LINE SURVEY PLAT

REC. NO.	STATE	PROJECT
2	OHIO	

LOR-254-0.00 B  
CENTER LINE PLAT  
LIMITED ACCESS

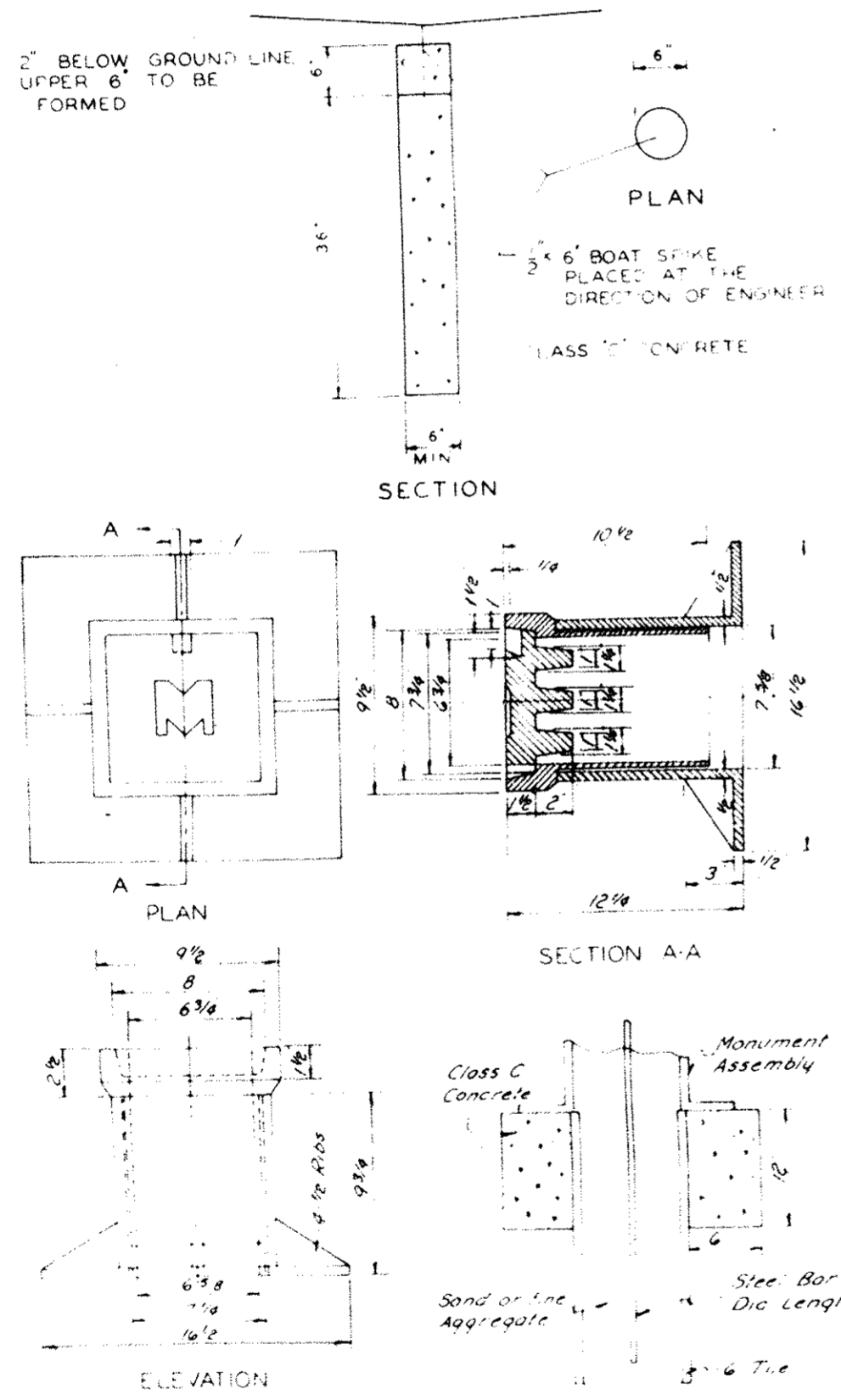
LOR-254-0.00 B  
LORAIN COUNTY  
CITY OF AMHERST  
BROWNHELM TWP. T 6N R 19W  
LOTS 23, 24, 25, 26  
AMHERST TWP. T 6N R 18W  
LOTS 98, 99, 1, 2, 19, 20, 21, 22, 40, 41, 60

#653244

**LIMITED ACCESS**  
THIS IMPROVEMENT HAS BEEN DECLARED A LIMITED ACCESS HIGHWAY FROM STA 176+46.33 TO STA 422+71.72 ON THE LEFT AND FROM STA 176+50.00 TO STA 423+37.26 ON THE RIGHT BY ACTION OF THE DIRECTOR OF HIGHWAYS AND RECORDED IN VOLUME \_\_\_\_\_ PAGE \_\_\_\_\_ OF THE DIRECTOR'S JOURNAL PURSUANT TO LAW

QUANTITIES  
43 - REFERENCE MONUMENTS  
22 - MONUMENT ASSEMBLIES

SYMBOL  
● REFERENCE MONUMENT  
■ SPECIAL MONUMENT ASSEMBLIES (SEE STANDARD DRAWING R1-1)



SPECIAL ADJUSTABLE MONUMENT ASSEMBLY  
1/2 or 1 Inserts for Various Heights

LOCATION OF CENTERLINE REFERENCE MONUMENT		
STATION	LOCATION	REMARKS
179+00	E.S.	POT
187+00	E.S.	POT
195+75.89	E.S.	PC
203+00	E.S.	POC
210+84.26	E.S.	PT
218+23.80	On Tang	PI
219+57.05	E.S.	5C or PCC
226+00	E.S.	POC
233+00	E.S.	POC
240+00	E.S.	POC
245+43.95	E.S.	PCC
248+10.62	E.S.	PT
258+00	E.S.	POT
266+18.19	5' L x 5' R	PC
268+18.19	6' L x 5' R	PCC
275+00	E.S.	POC
282+00	E.S.	POC
289+81.68	E.S.	PCC
291+81.68	E.S.	PT
307+00	E.S.	POT
315+00	E.S.	POT
322+28.28	E.S.	PC
331+50.06	E.S.	PT
340+50	E.S.	POT
351+30	E.S.	POT
361+49.45	E.S.	PC
368+20	E.S.	POC
375+22.55	E.S.	PT
383+00	E.S.	POT
391+00	E.S.	POT
399+74.61	E.S.	PC
407+00	E.S.	POC
413+00	E.S.	POC
421+00	E.S.	POC

LOCATION OF CENTERLINE REFERENCE MONUMENT		
STATION	LOCATION	REMARKS
Cooper Foster Park Road Relocated		
216+43.81	On Tang	PI
Crosse Road		
6+00	On Tang	PI
11+00.61	On Tang	PI
Sewage Treatment Plant Road		
1+30.58	On Tang	PI
8+38.49	On Tang	PI
Dewey Road		
48+00	E	POT
52+00	E	POT
LOCATION OF STANDARD MONUMENT ASSEMBLY		
309+36.34	E.S.	POT
Cooper Foster Park Road Relocated		
176+43.18	E	PC
180+88.14	E	PT
183+99.94	E	PC
191+00	E	PT
195+75.89	E	PC
211+44.11	E	PT
213+08.20	E	PC
217+15.39	E	PT
23+32.75	E	PC
107+48.02	E	PT
Crosse Road		
1435.57	On Tang	PI
15+23.72	E	PT 1/2" Dia
Oak Point Road		
40+00	E	POT
53+50.38	E	PI
60+00	E	POT
Sewage Treatment Plant Road Reloc		
13+09.30	E	PI 1/2" Dia
Kajba Road		
42+54.42	PI	Exist & 1/2" Reloc
46+50.06	PI	1/2" Reloc
52+00	E	POT
Dewey Road		
46+00	E	POT
55+00	E	POT

RECEIVED June 24 1964  
RECORDED June 24 1964  
PLAT BOOK 24 PAGE 2  
SIGNED [Signature] COUNTY RECORDER

SIGNED [Signature] P.E. NO. 24400  
DATE 6-19-64 DIVISION DEPUTY DIRECTOR  
DIV. NO. 3

Fee 17.28

NOTE: SPECIAL ADJUSTABLE MONUMENT ASSEMBLIES AS SHOWN HEREON ARE TO BE PLACED DURING CONSTRUCTION ON T-71 PAVEMENTS AND AFTER THE LEVELING COURSE AND PRIOR TO PLACING THE SURFACE COURSES ON T-35 PAVEMENTS. ALL MONUMENTS ARE TO BE PLACED UNDER THE DIRECTION OF THE PROJECT ENGINEER.

I HEREBY CERTIFY THIS PLAT TO BE A TRUE DELINEATION OF A SURVEY MADE BY SHAFFER, PARRETT & ASSOCIATES OF MANSFIELD & WOOSTER, OHIO  
DATE 5/21/64 BY [Signature]

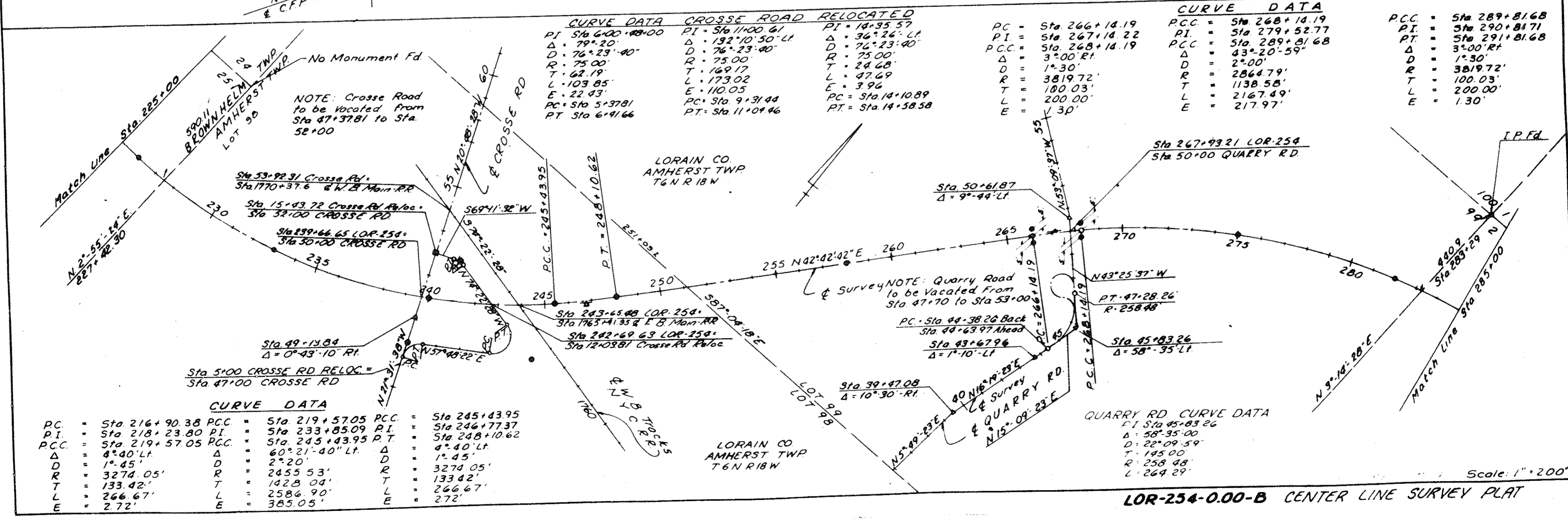
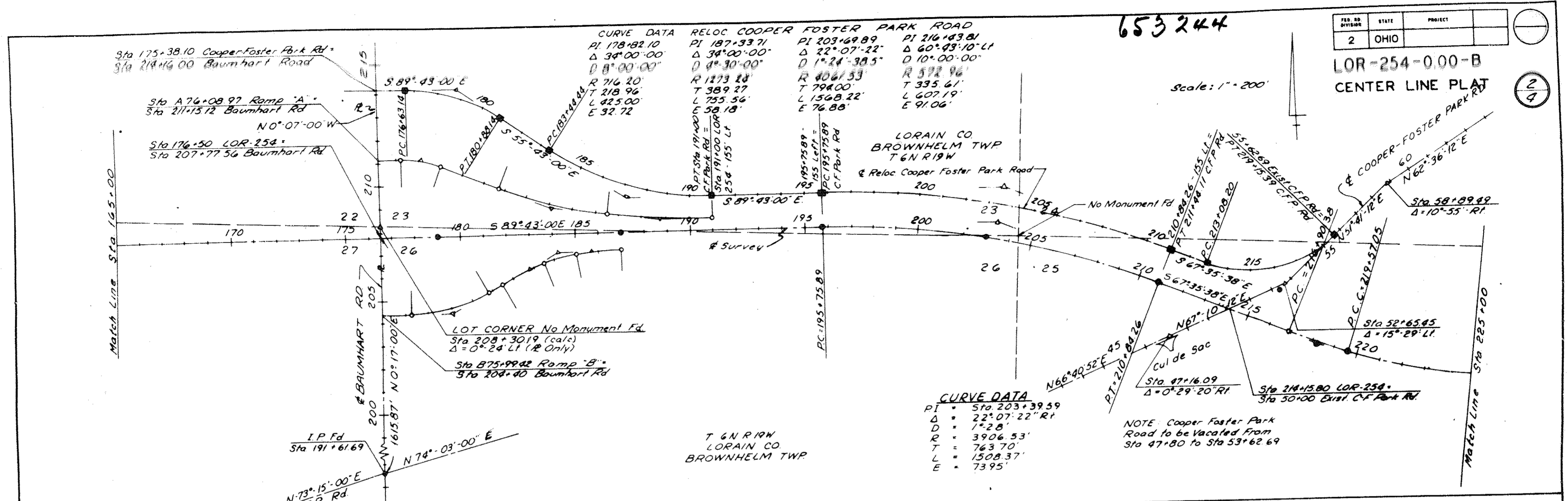
REGISTER CIVIL ENGINEER 680  
REGISTER SURVEYOR 3828

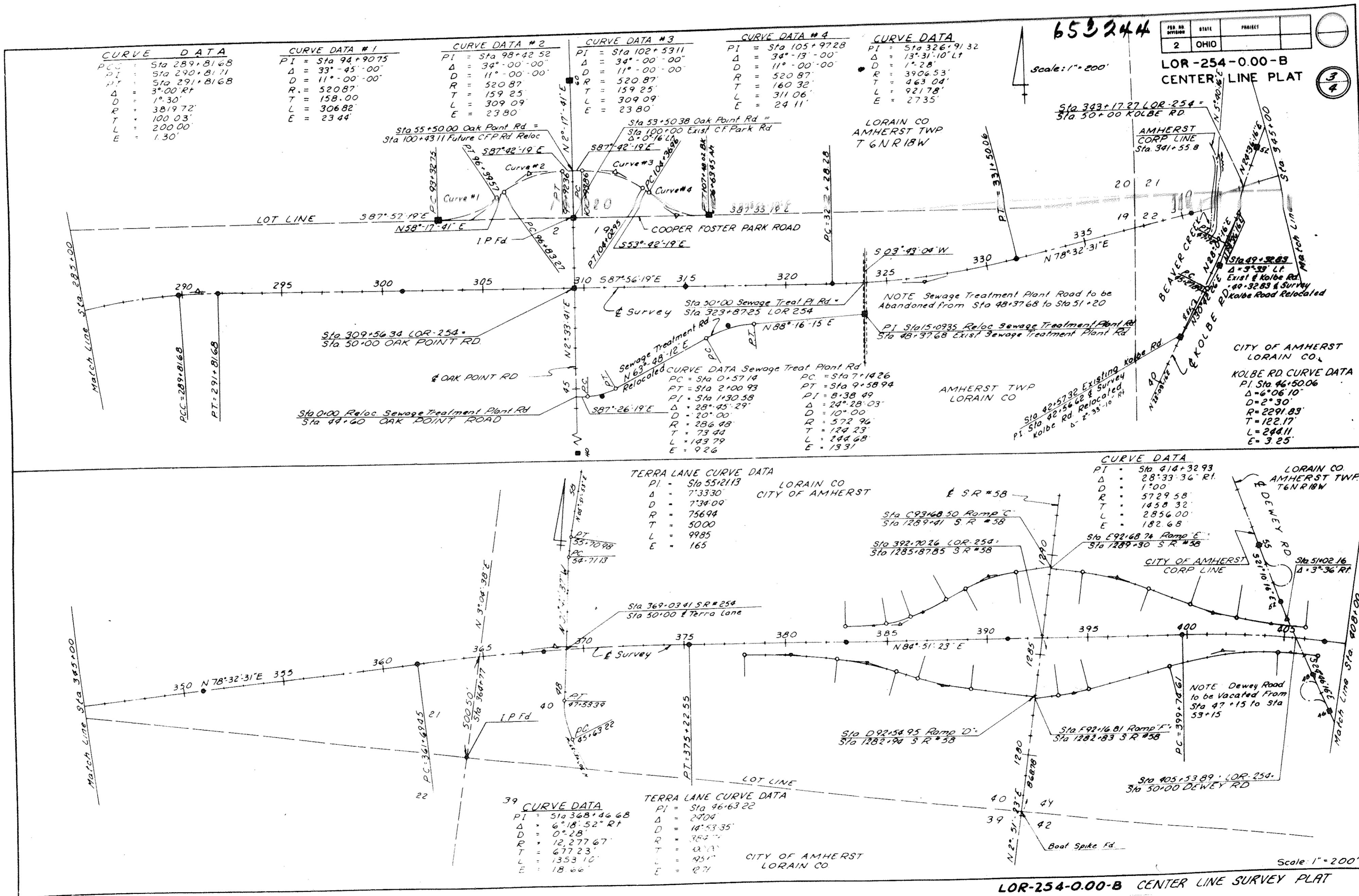
PREPARED BY  
SHAFFER, PARRETT & ASSOCIATES  
CONSULTING ENGINEERS

MANSFIELD OHIO WOOSTER

CENTER LINE SURVEY PLAT







30  
2  
24

SLIDE  
PAGE  
VOLUME

VOLUME 24  
PAGE 2  
SLIDE 30

2

FED. RD. DIVISION	STATE	PROJECT
2	OHIO	

LOR-254-000-B  
CENTER LINE PLAT

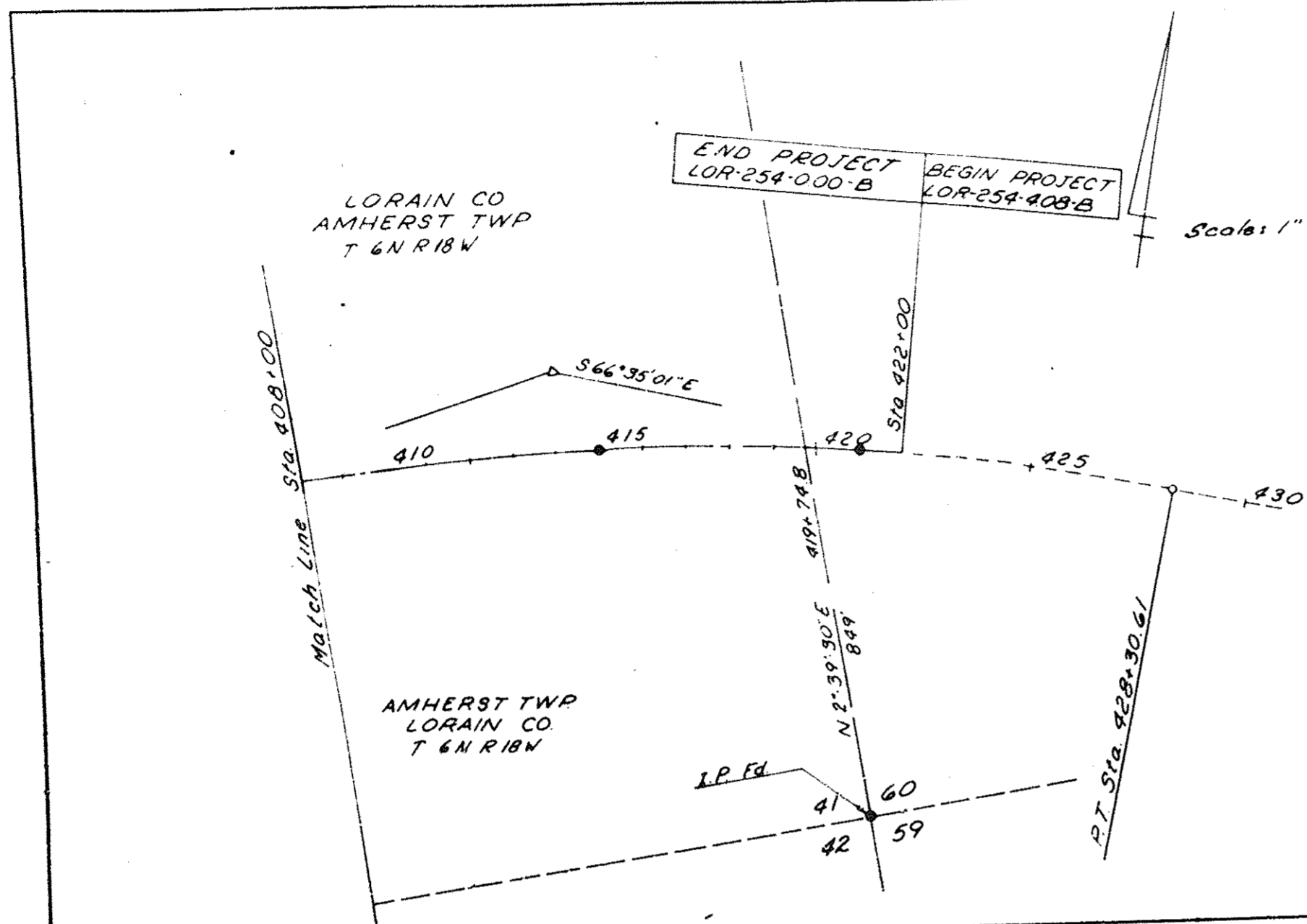


658244

CURVE DATA

PI = Sta. 414+32.93  
 $\Delta$  = 28° 33' 36" RT  
 D = 1°.00'  
 R = 5729.58'  
 T = 1458.32'  
 L = 2856.00'  
 E = 182.68'

Scale: 1" = 200'



LOR-254-000-B CENTER LINE SURVEY PLAT