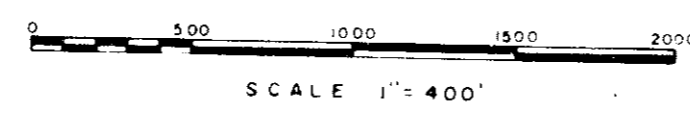


QUAN	STATION	LOCATION	IDENTIFICATION
1	1262.00		
1	1270.00		
1	1277.19.07		Lot Corner
1	1285.87.65		(E. Prop. S.R. 254 & 26 INT.)
1	1294.00		
1	1301.35.81		(E.G. S.R. 254 & 26 INT.)
1	1309.00		
1	1318.44.59		PCC
1	1328.24.45		PCC
1	1332.84.45		PCC
1	1337.85.21		PT
1	1339.19.06		PCC
1	1341.94.57		PCC
1	1346.61.00		PCC
1	1349.61.01		PCC
1	1350.44.54		PCC
1	1353.11.07		PT
1	1362.00		
1	1370.00		
1	1379.72		S. Survey (EX. P.I.)
1	1383.00		S. Survey
1	1391.90.44		A-35 LY (EX. P.I.)
1	1391.90.59		P.I.
1	1400.00		S. Survey
1	1410.00		S. Survey
1	1420.00		S. Survey
1	1429.25.78		MONUMENT ASSEMBLY
1	1439.59.81		MONUMENT ASSEMBLY
1	1463.38.04		MONUMENT ASSEMBLY
1	1472.00		MONUMENT ASSEMBLY

QUAN	STATION	LOCATION	IDENTIFICATION
1	1348.46.29	P.I. OF C	3.0 FT. PI E. OF EX. R/W
1		REFERENCE MONUMENTS	(AS PER PLAN) (SEE SHEET 2)

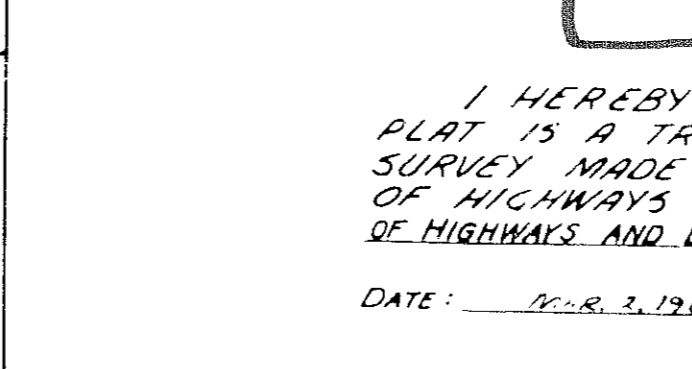
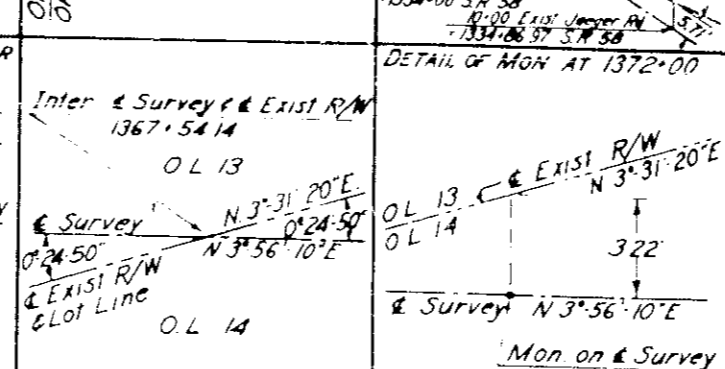
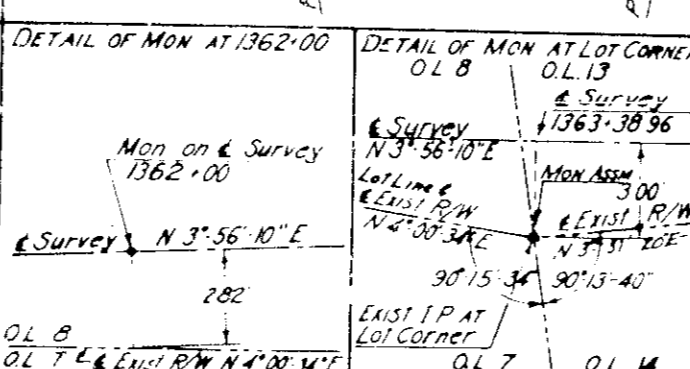
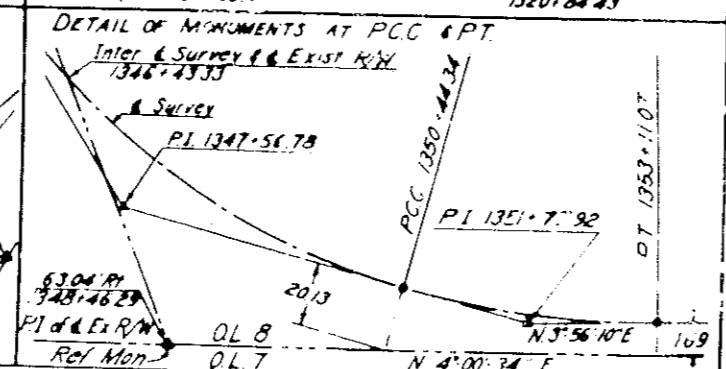
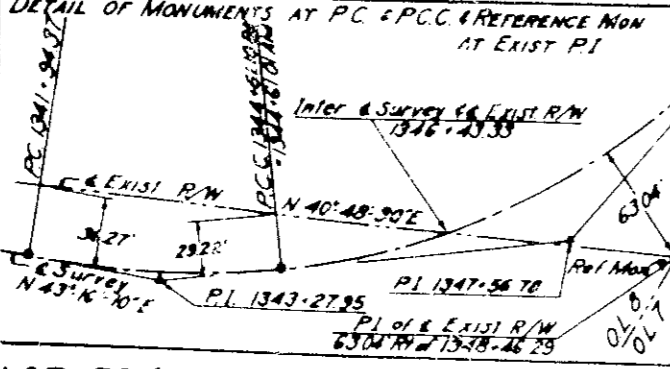
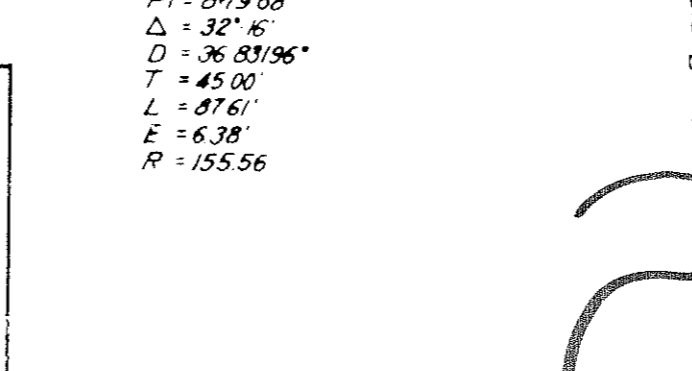
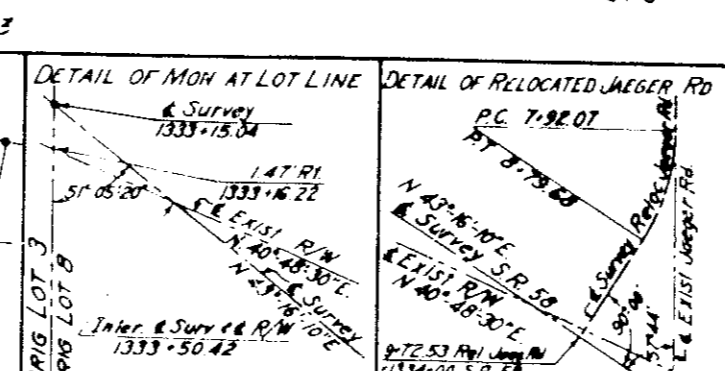
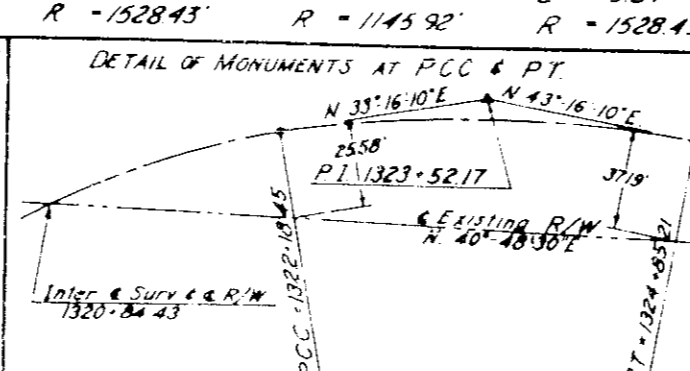
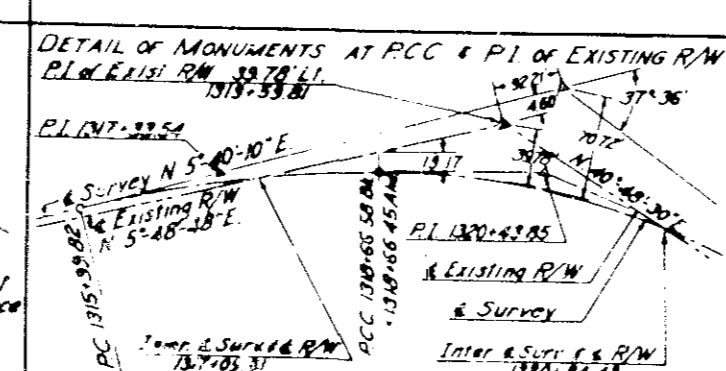
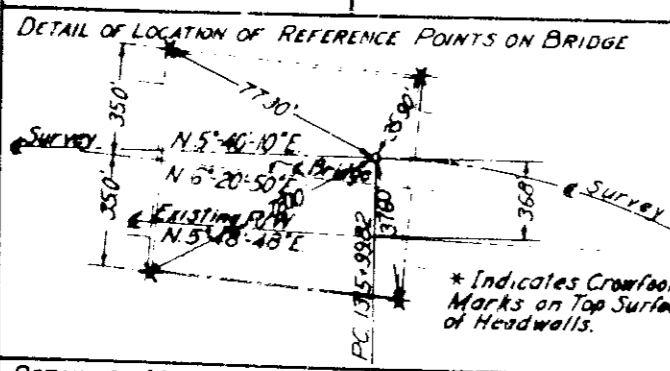
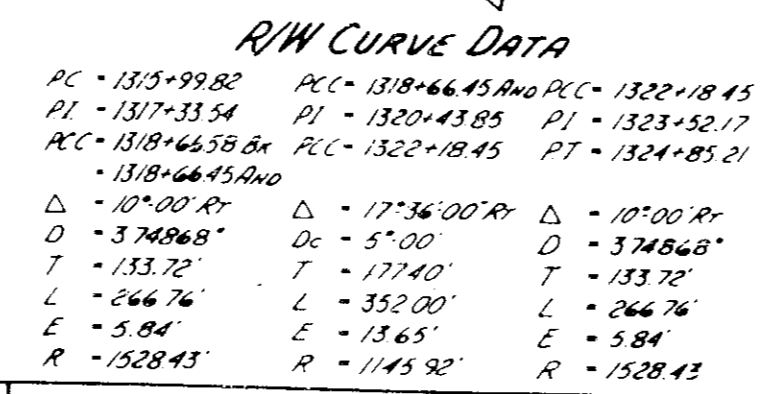
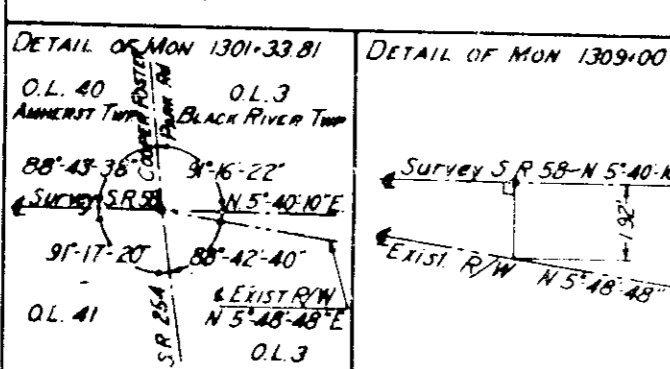
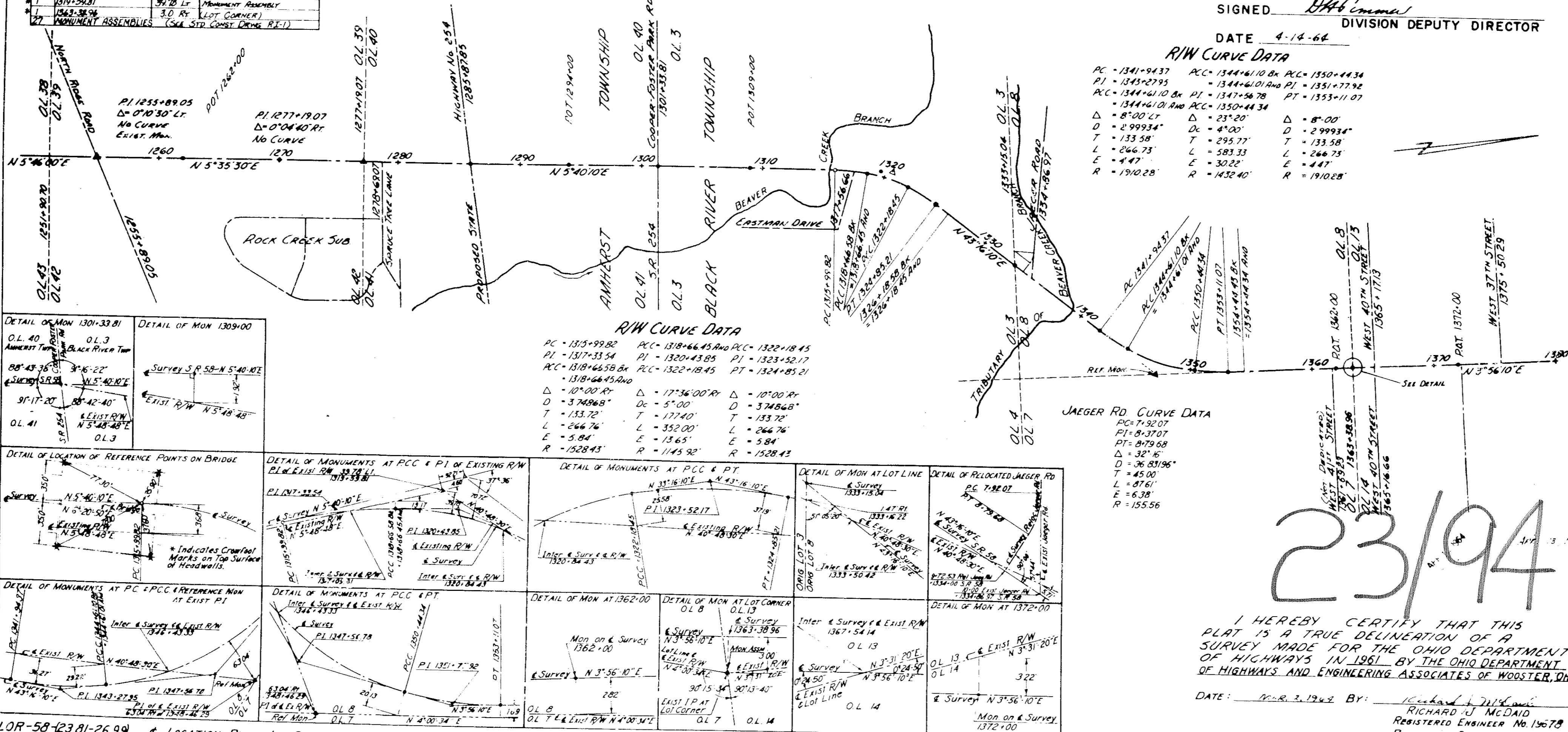
NOTE:
SPECIAL MONUMENT ASSEMBLIES AS SHOWN ON SHEET NO. 11 OF THE CONSTRUCTION PLAN ARE TO BE PLACED DURING CONSTRUCTION IN THE 1571 PARCELS & OFFICE THE LEVELING COURSE & PEGS TO PLACING THE SURFACE COURSE ON THE PARCELS.
ALL MONUMENTS ARE TO BE PLACED UNDER THE DIRECTION OF THE PROJECT ENGINEER.

LOCATION PLAN
LEAVITT ROAD
LOR-58-(23.81-24.66) 649704
CITY OF AMHERST AND LORAIN
AMHERST TWP. ORIGINAL LOTS 39, 40, 41 & 42.
BLACK RIVER TWP. ORIGINAL LOTS 3, 7, 8, 13, 14, 17, 18, 23 & 24.
LORAIN COUNTY



RECEIVED April 27 1964
RECORDED April 27 1964
BOOK 23 PAGE 94
Leta B. Mitchell
LORAIN COUNTY RECORDER
m.c. 900

SIGNED *D.A. Commey*
DIVISION DEPUTY DIRECTOR
DATE 4-14-64



23/94

I HEREBY CERTIFY THAT THIS PLAT IS A TRUE DELINEATION OF A SURVEY MADE FOR THE OHIO DEPARTMENT OF HIGHWAYS IN 1961 BY THE OHIO DEPARTMENT OF HIGHWAYS AND ENGINEERING ASSOCIATES OF WOOSTER, OHIO.
DATE: DEC. 3, 1964 BY: *Richard H. McDavid*
RICHARD H. MCDAID
REGISTERED ENGINEER No. 15678
REGISTERED SURVEYOR No. 5009

LOR-58-(23.81-26.99) & LOCATION PLAN 1 of 2

COPY

23/94

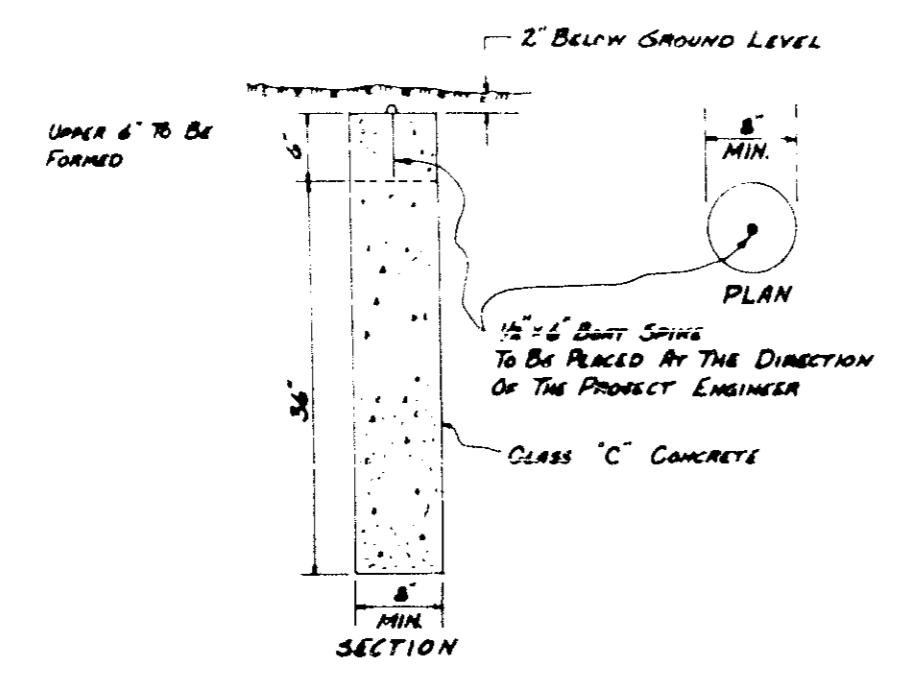
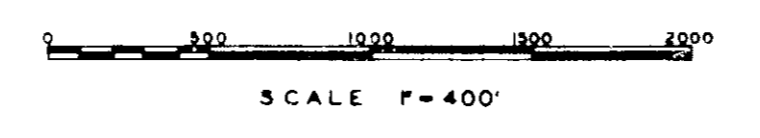
2	OHIO	
---	------	--

143
156

LORAIN COUNTY
LOR 58-(23.81-24.66)

649704

LOCATION PLAN
LEAVITT ROAD
LOR-58-(23.81-24.66)
CITY OF AMHERST AND LORAIN
AMHERST TWP ORIGINAL LOTS 39, 40, 41 & 42.
BLACK RIVER TWP ORIGINAL LOTS 3, 7, 8, 13, 14, 17, 18, 23 & 24.
LORAIN COUNTY

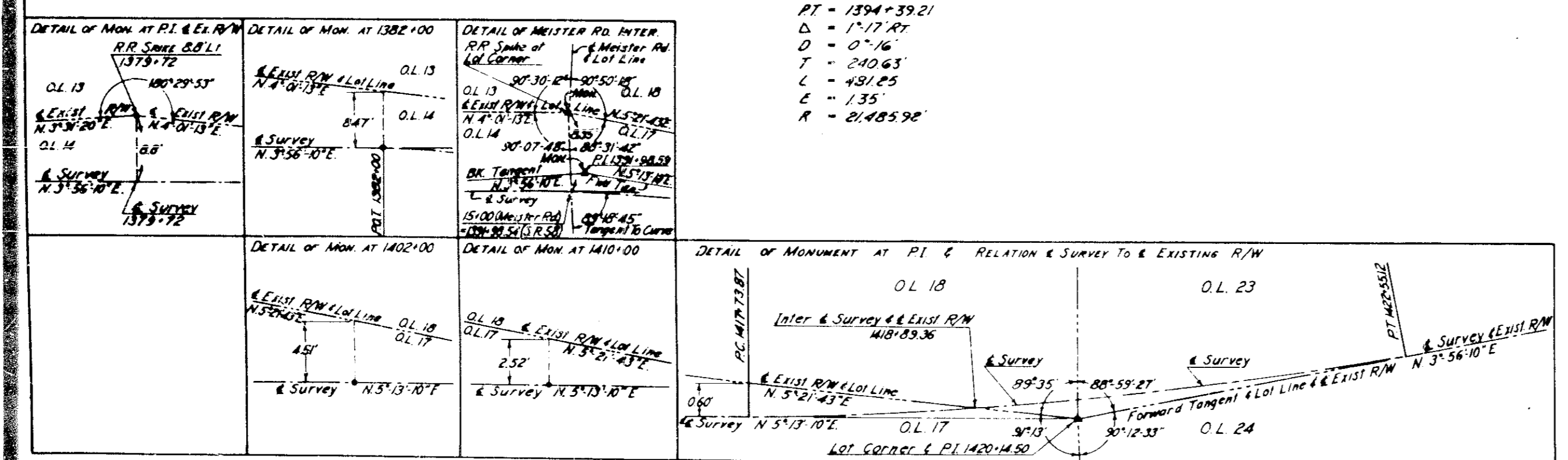
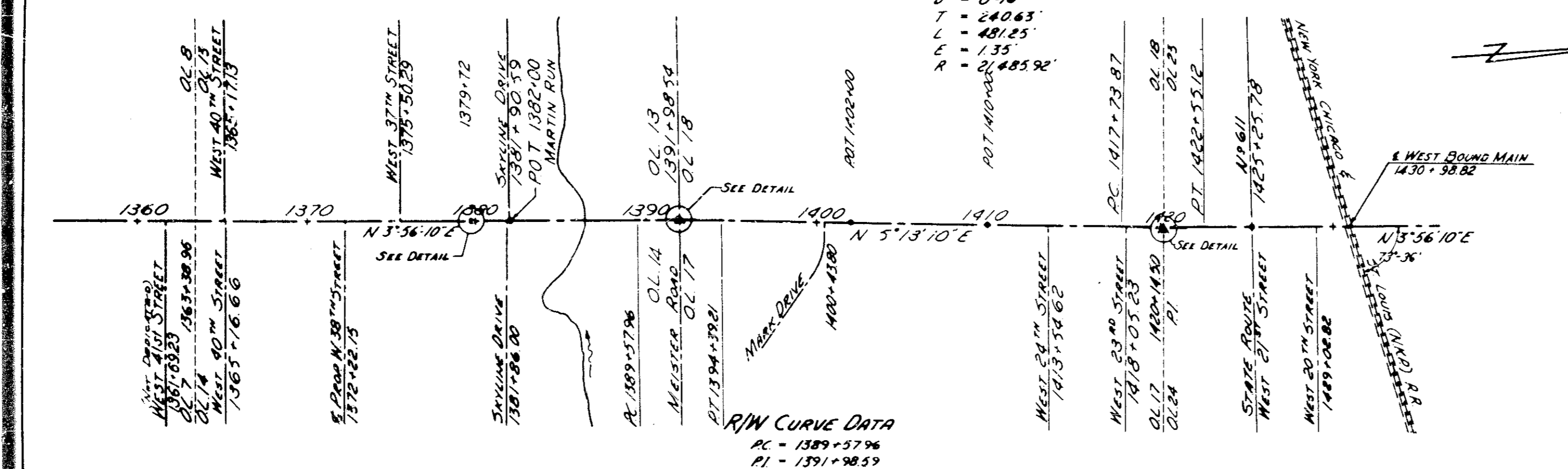


RECEIVED April 27 1964
RECORDED April 27 1964
BOOK 23 PAGE 94
Leota B. Mitchell
LORAIN COUNTY RECORDER

SIGNED [Signature]
DIVISION DEPUTY DIRECTOR
DATE 4-14-64

R/W CURVE DATA
PC = 1417+23.87
PI = 1420+14.50
PT = 1422+55.12
Δ = 1° 17' 41"
D = 0° 16'
T = 240.63'
L = 481.25'
E = 1.35'
R = 21,485.92'

R/W CURVE DATA
PC = 1389+57.96
PI = 1391+98.59
PT = 1394+39.21
Δ = 1° 17' 41"
D = 0° 16'
T = 240.63'
L = 481.25'
E = 1.35'
R = 21,485.92'



LOR-58-23.81 & LOCATION PLAN 2 OF 2

23/94

I HEREBY CERTIFY THAT THIS PLAT IS A TRUE DELINEATION OF A SURVEY MADE FOR THE OHIO DEPARTMENT OF HIGHWAYS IN 1961 BY THE OHIO DEPARTMENT OF HIGHWAYS AND ENGINEERING ASSOCIATES OF WOOSTER, OHIO
DATE: MAR 2 1964 BY: [Signature]
RICHARD J. MC DAID
REGISTERED ENGINEER NO. 19678...
REGISTERED SURVEYOR NO. 5003

COPY

23/94