

ROBINDALE PARK SUBDIVISION NO. 2

OWNERS

ALROSE HOUSING CORP, ET AL
PART OF FORMER ELYRIA TOWNSHIP LOT 29

ELYRIA CITY, LORIAN COUNTY, OHIO

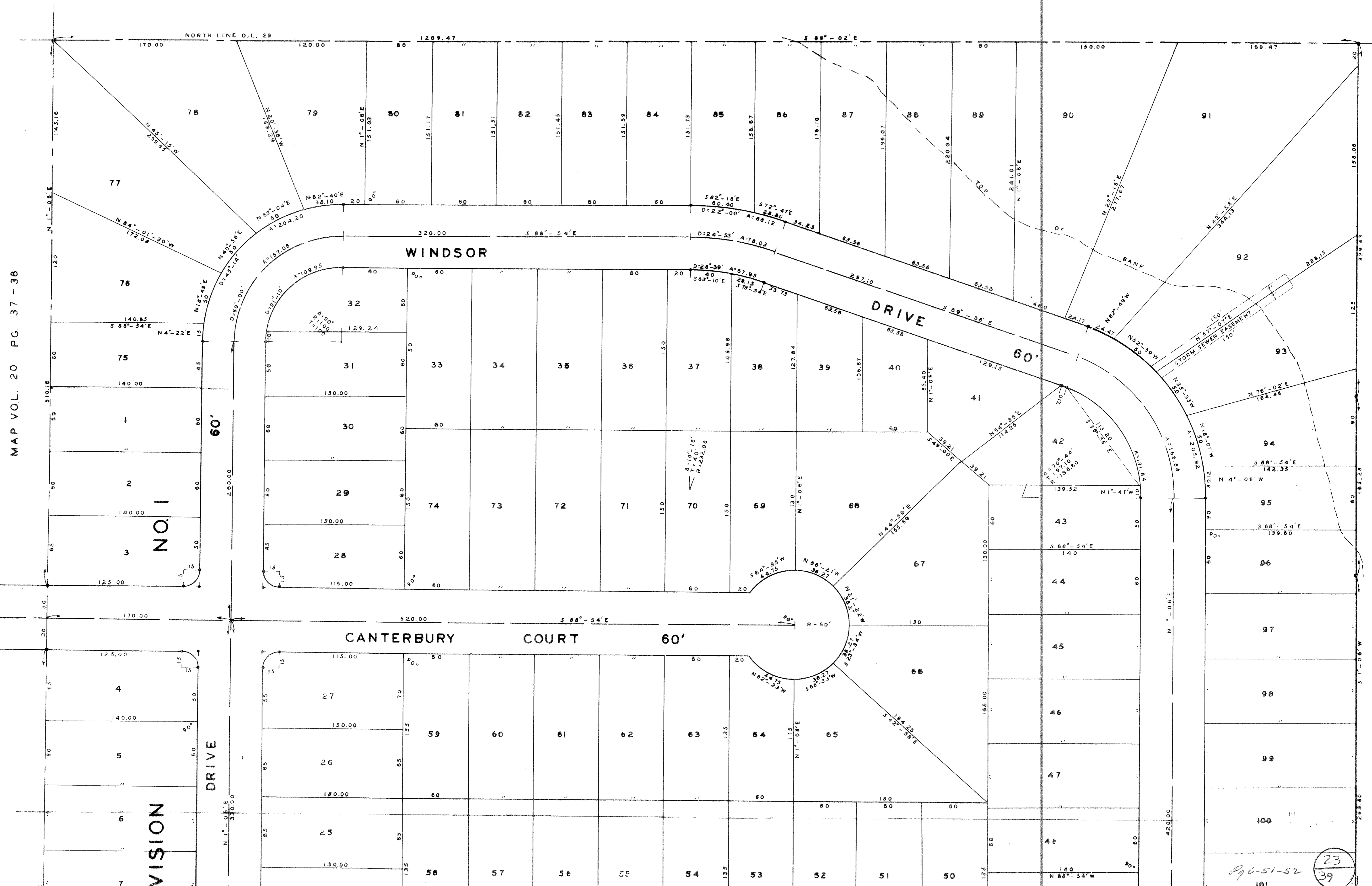
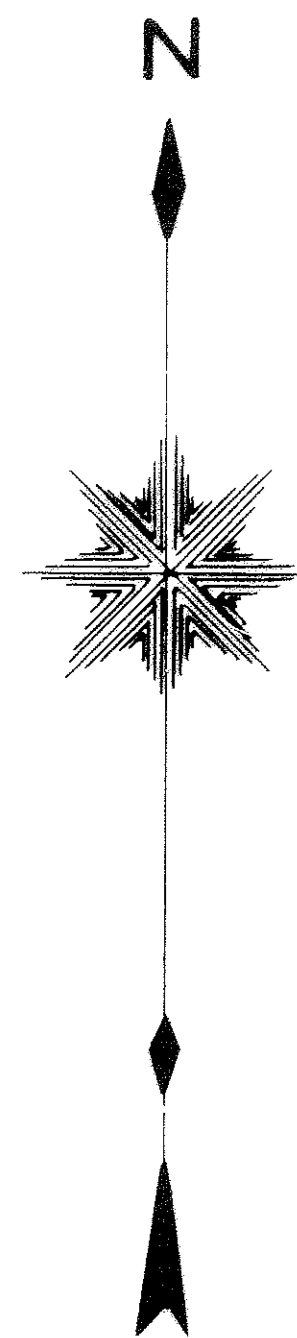
SCALE 0 40 80 FEB. 2, 1961

J. W. WARDEN AND ASSOCIATES
REG. CIVIL ENGINEERS

617554

617554

23/39-40



MAP VOL. 20 PG. 37-38

WHITMAN BLVD.

EAST LINE

NO. 1

VISION DRIVE

WINDSOR DRIVE

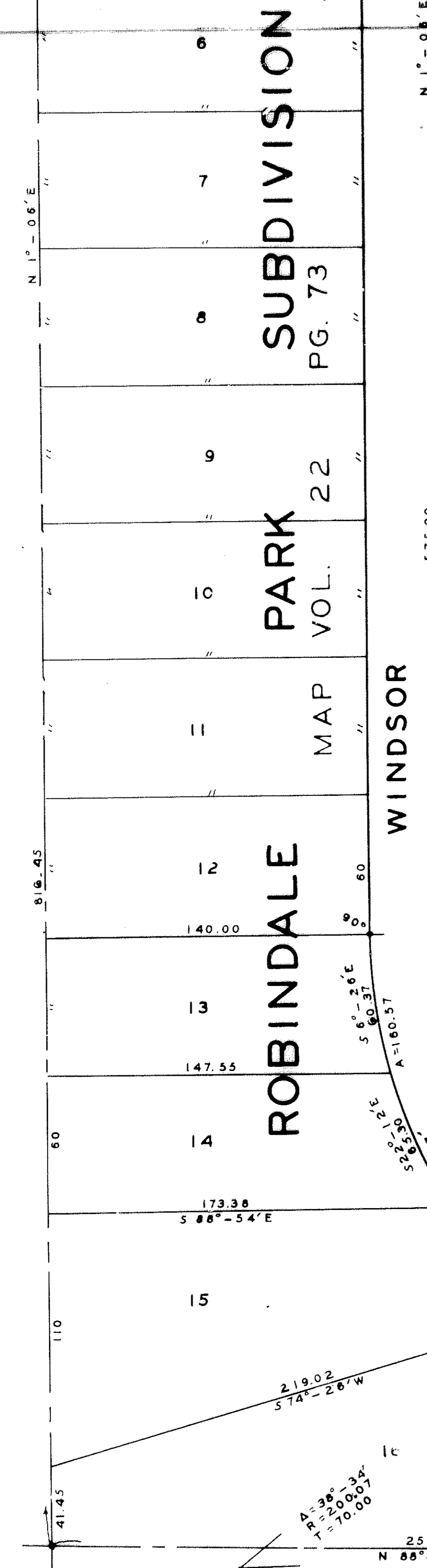
CANTERBURY COURT

23/39-40

Pg 6-51-52

23/39-40

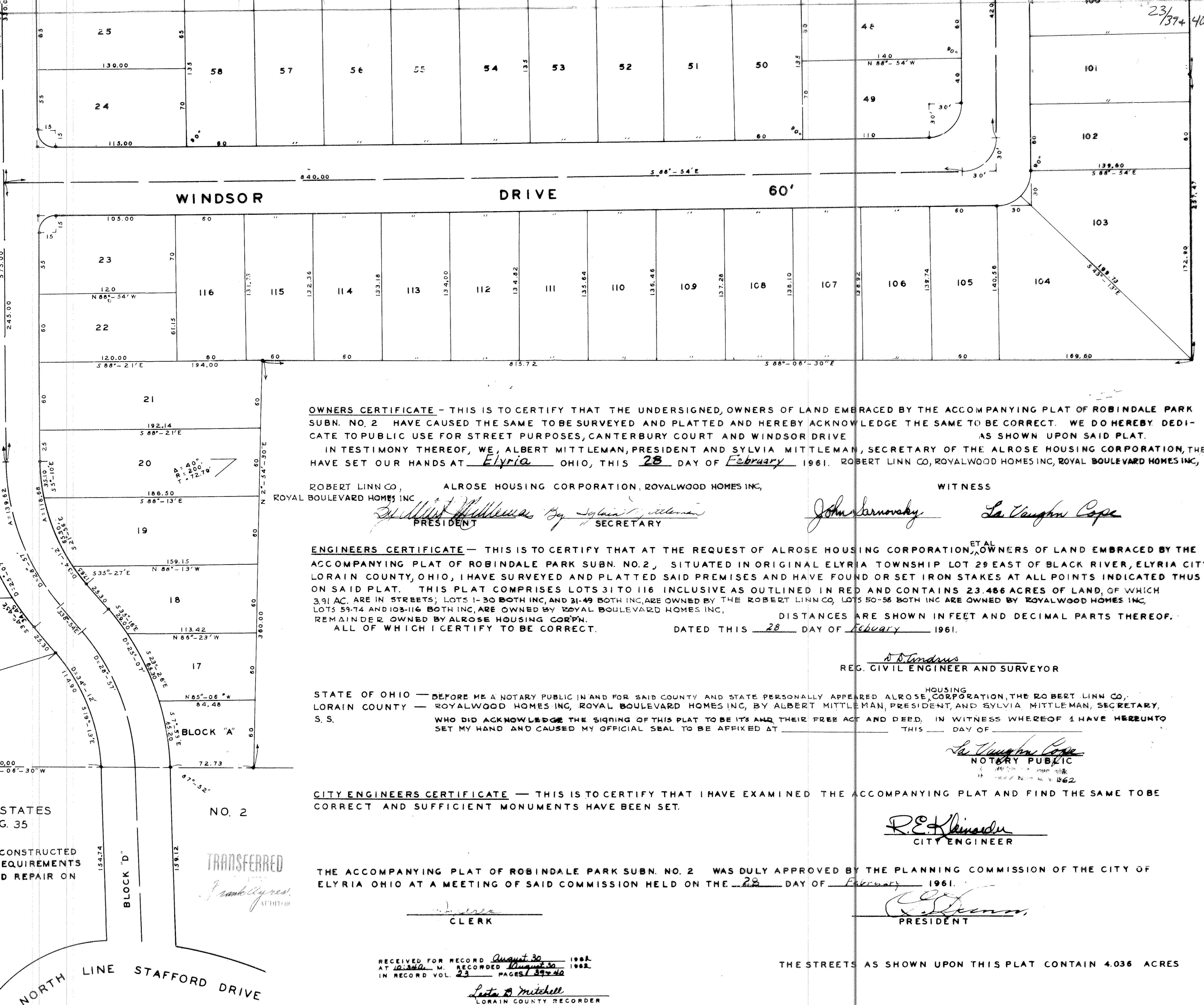
COUNTRY CLUB ESTATES NO. 1



COUNTRY CLUB ESTATES MAP VOL. 22 PG. 35

THIS IS TO CERTIFY THAT THE IMPROVEMENTS HAVE BEEN CONSTRUCTED ON THE STREETS SHOWN THEREON ACCORDING TO THE REQUIREMENTS OF THE CITY OF ELYRIA, AND SAID STREETS ARE IN GOOD REPAIR ON THE 22ND DAY OF AUGUST 1962

R.E. Klein
ELYRIA CITY ENGINEER



NORTH LINE STAFFORD DRIVE

OWNERS CERTIFICATE - THIS IS TO CERTIFY THAT THE UNDERSIGNED, OWNERS OF LAND EMBRACED BY THE ACCOMPANYING PLAT OF ROBINDALE PARK SUBN. NO. 2 HAVE CAUSED THE SAME TO BE SURVEYED AND PLATTED AND HEREBY ACKNOWLEDGE THE SAME TO BE CORRECT. WE DO HEREBY DEDICATE TO PUBLIC USE FOR STREET PURPOSES, CANTERBURY COURT AND WINDSOR DRIVE AS SHOWN UPON SAID PLAT.

IN TESTIMONY THEREOF, WE, ALBERT MITTLEMAN, PRESIDENT AND SYLVIA MITTLEMAN, SECRETARY OF THE ALROSE HOUSING CORPORATION, THE HAVE SET OUR HANDS AT Elyria OHIO, THIS 28 DAY OF February 1961. ROBERT LINN CO, ROYALWOOD HOMES INC, ROYAL BOULEVARD HOMES INC,

ROBERT LINN CO, ALROSE HOUSING CORPORATION, ROYALWOOD HOMES INC,
ROYAL BOULEVARD HOMES INC

Albert Mittelman By *Sylvia Mittelman*
PRESIDENT SECRETARY

WITNESS

John Larnovsky *La Vaughn Cope*

ENGINEERS CERTIFICATE - THIS IS TO CERTIFY THAT AT THE REQUEST OF ALROSE HOUSING CORPORATION, OWNERS OF LAND EMBRACED BY THE ACCOMPANYING PLAT OF ROBINDALE PARK SUBN. NO. 2, SITUATED IN ORIGINAL ELYRIA TOWNSHIP, LOT 29 EAST OF BLACK RIVER, ELYRIA CITY, LORAIN COUNTY, OHIO, I HAVE SURVEYED AND PLATTED SAID PREMISES AND HAVE FOUND OR SET IRON STAKES AT ALL POINTS INDICATED THUS ON SAID PLAT. THIS PLAT COMPRISES LOTS 31 TO 116 INCLUSIVE AS OUTLINED IN RED AND CONTAINS 23.486 ACRES OF LAND, OF WHICH 3.91 AC. ARE IN STREETS; LOTS 1-30 BOTH INC. AND 31-49 BOTH INC. ARE OWNED BY THE ROBERT LINN CO, LOTS 50-58 BOTH INC. ARE OWNED BY ROYALWOOD HOMES INC, LOTS 59-74 AND 103-116 BOTH INC. ARE OWNED BY ROYAL BOULEVARD HOMES INC, REMAINDER OWNED BY ALROSE HOUSING CORPN.

DISTANCES ARE SHOWN IN FEET AND DECIMAL PARTS THEREOF.

ALL OF WHICH I CERTIFY TO BE CORRECT. DATED THIS 28 DAY OF February 1961.

D. D. Andrews
REG. CIVIL ENGINEER AND SURVEYOR

STATE OF OHIO - BEFORE ME A NOTARY PUBLIC IN AND FOR SAID COUNTY AND STATE PERSONALLY APPEARED ALROSE HOUSING CORPORATION, THE ROBERT LINN CO, LORAIN COUNTY - ROYALWOOD HOMES INC, ROYAL BOULEVARD HOMES INC, BY ALBERT MITTLEMAN, PRESIDENT, AND SYLVIA MITTLEMAN, SECRETARY, S. S. WHO DID ACKNOWLEDGE THE SIGNING OF THIS PLAT TO BE ITS AND THEIR FREE ACT AND DEED. IN WITNESS WHEREOF I HAVE HEREUNTO SET MY HAND AND CAUSED MY OFFICIAL SEAL TO BE AFFIXED AT _____ THIS _____ DAY OF _____

La Vaughn Cope
NOTARY PUBLIC

CITY ENGINEERS CERTIFICATE - THIS IS TO CERTIFY THAT I HAVE EXAMINED THE ACCOMPANYING PLAT AND FIND THE SAME TO BE CORRECT AND SUFFICIENT MONUMENTS HAVE BEEN SET.

R.E. Klein
CITY ENGINEER

THE ACCOMPANYING PLAT OF ROBINDALE PARK SUBN. NO. 2 WAS DULY APPROVED BY THE PLANNING COMMISSION OF THE CITY OF ELYRIA OHIO AT A MEETING OF SAID COMMISSION HELD ON THE 28 DAY OF February 1961.

Franklyn
CLERK

Albert Mittelman
PRESIDENT

RECEIVED FOR RECORD August 30 1962
AT 10:30 A.M. RECORDED August 30 1962
IN RECORD VOL. 23 PAGES 139-42

Lester B. Mitchell
LORAIN COUNTY RECORDER

THE STREETS AS SHOWN UPON THIS PLAT CONTAIN 4.036 ACRES

FEE 16.00

23
39-40

Pg 6-51-52

23
40