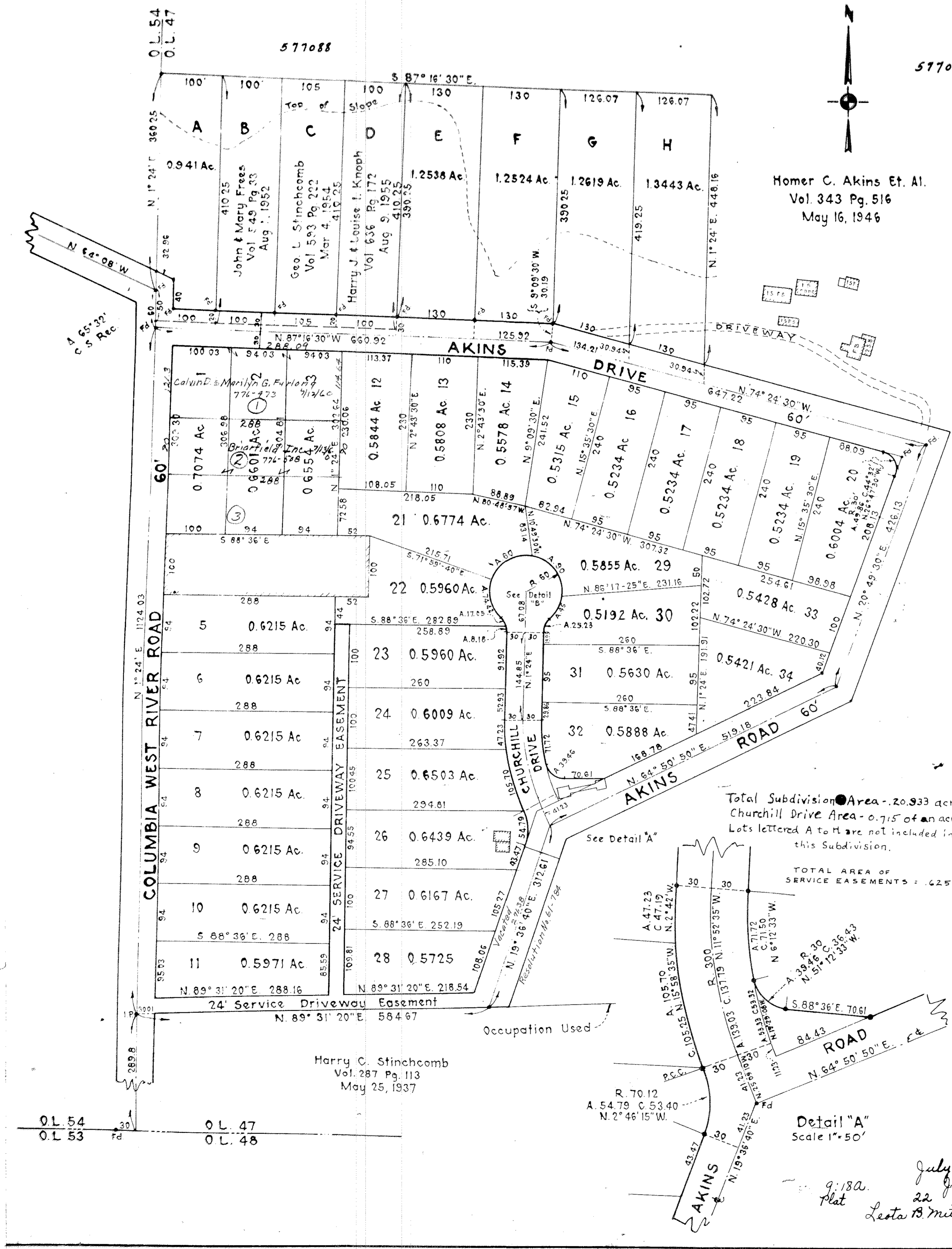


577088 Vol 22 Pg 4B. HOMER C. AKINS July 8 - 1960
SUBDIVISION
 OF PART OF ORIGINAL COLUMBIA
 TOWNSHIP LOT NO. 47
 COUNTY OF LORAIN - STATE OF OHIO
 Scale 1" = 100' July 1957



Homer C. Akins Et. Al.
 Vol. 343 Pg. 516
 May 16, 1946

Dimensions shown on this plan are expressed in feet and decimal parts thereof. Iron monuments were found or set at all points indicated. All of which I certify to be correct.

John M. Johnson
 Registered Surveyor No. 3611 Berea Ohio

DEDICATION
 We, the undersigned owners of the land shown on this plat, hereby accept this plat and subdivision of the same and dedicate to public for use as a highway Akins Drive and Churchill Drive as shown hereon.

STATE OF OHIO)
 COUNTY OF LORAIN)
 Before me a notary public, in and for said county and state personally appeared the above signed who acknowledged the signing of the foregoing instrument to be their free act and deed personally.
 In witness whereof I hereunto set my hand and official seal at Columbus Station, Ohio, this 27th day of August 1957.
 Calvin B. Zurlong, Notary Public

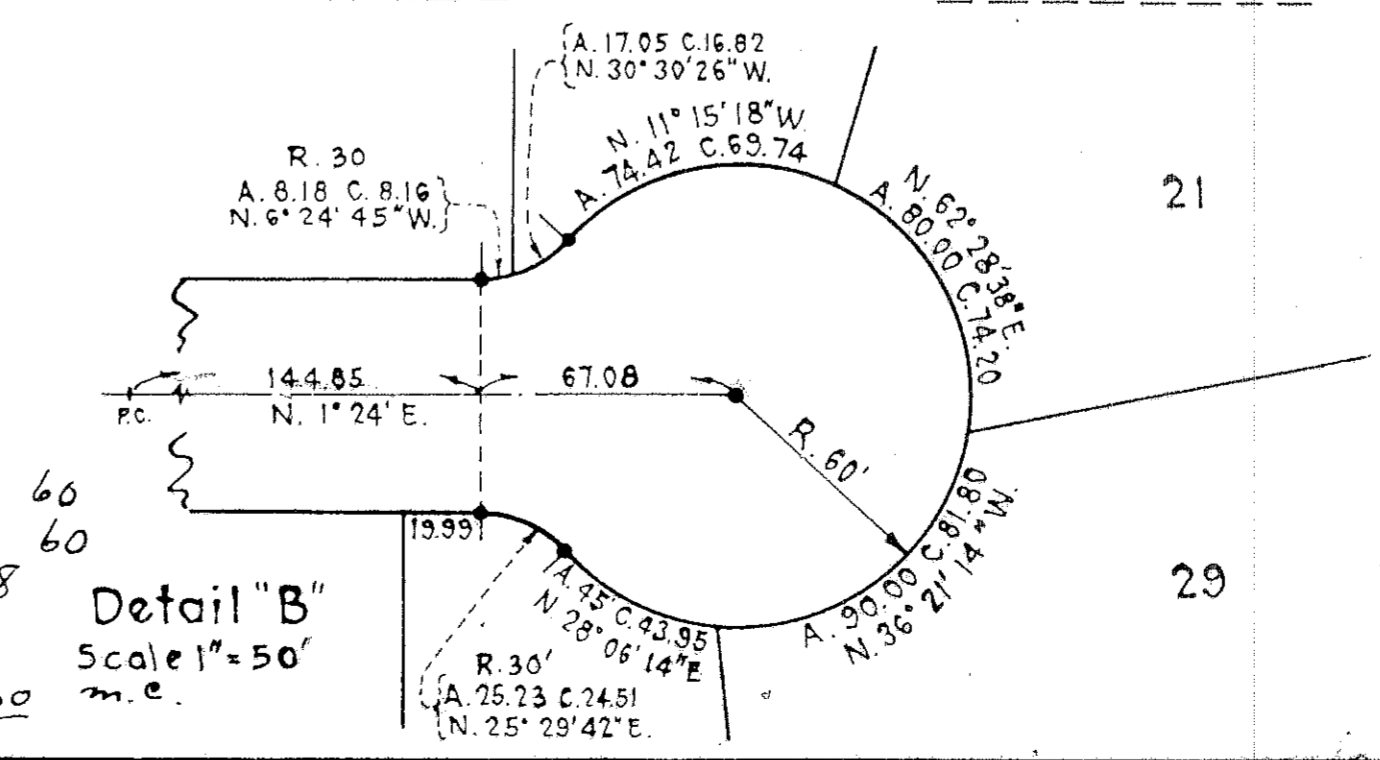
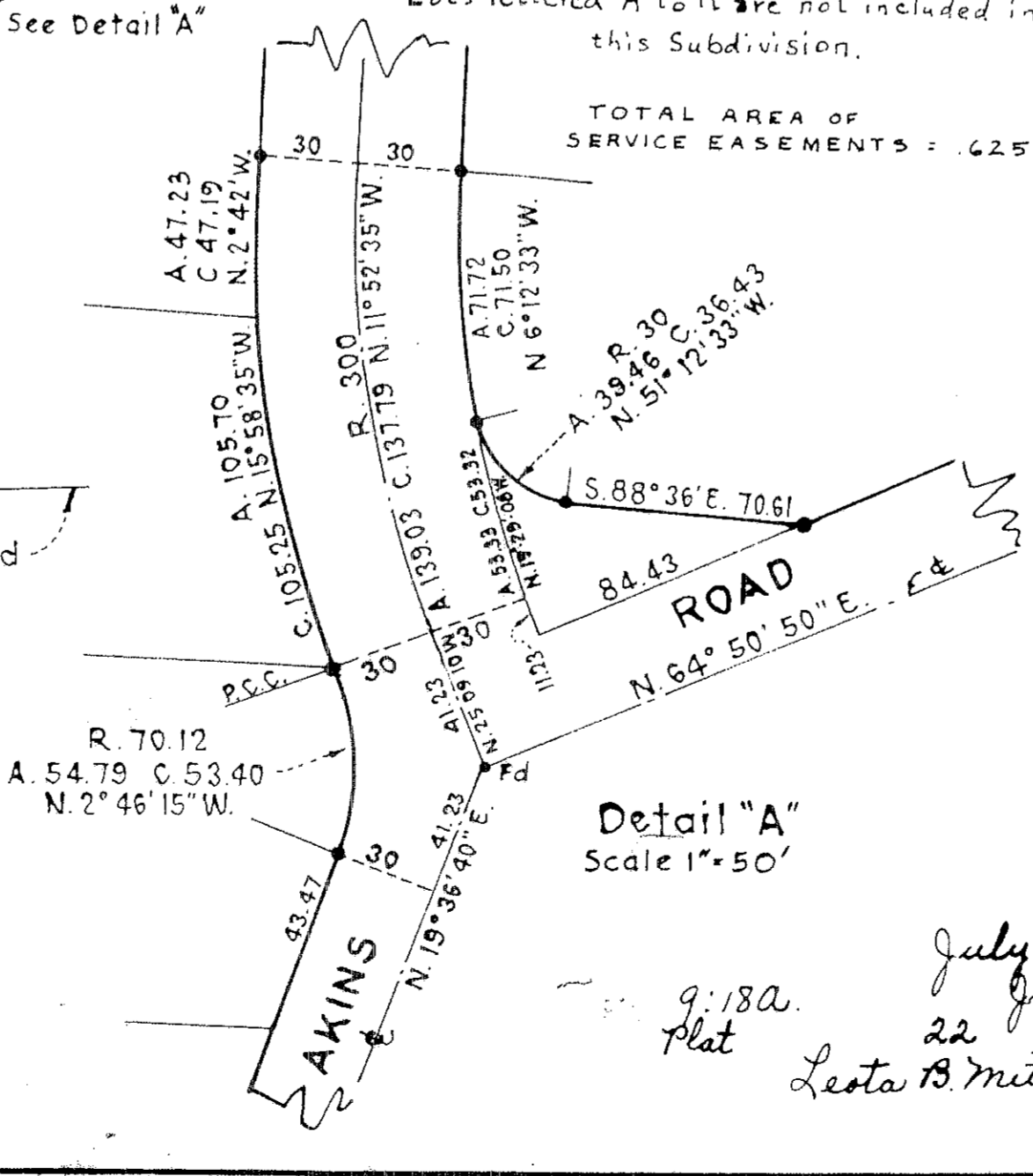
APPROVALS:
 Plat approved by the trustees of Columbia Township this day of 1957.
 Plat approved and accepted by the County Engineer of Lorain County this day of 1957.
 County Engineer

Plat approved and accepted by the Commissioners of the County of Lorain, this 26th day of AUG., 1957.
 SEE RESOLUTION 17-180
 Commissioners.

Entered for Transfer Recorded

Total Subdivision Area - 20.933 acres
 Churchill Drive Area - 0.715 of an acre
 Lots lettered A to H are not included in this Subdivision.

TOTAL AREA OF SERVICE EASEMENTS: .6254 Ac.



July 8 60
 July 8 48
 Lesta B Mitchell
 500

8/7/58