

**CURVE DATA**

PC 123.04'	PCC 89.70'	PCC 140.30'
PT 128.37'	PI 023.36'	PI 208.51'
PC 123.04'	PCC 140.30'	PT 213.64'
A 1700.00'	A 1700.00'	A 1700.00'
D 120000"	D 120000"	D 120000"
T 88.67'	T 12.08'	T 88.67'
L 133.84'	L 150.00'	L 133.84'
E 0.33'	E 0.33'	E 0.33'
R 282.51'	R 286.47'	R 282.51'

570835  
Page 30

**CENTERLINE LOCATION PLAN**  
 LOR-76-000 MED-76-1508  
 LOR-303 (16.40-16.83) (16.69)  
 LITCHFIELD TWP LOTS 20 & 22  
 MEDINA COUNTY - OHIO  
 GRAFTON TWP LOTS 35, 36, 85, 86, 75, 76, 65, 64, 55, 56, 45, 46  
 LORAIN COUNTY - OHIO

I Herby Certify That The Accompanying  
 Plat Is A True Delimitation Of A Survey  
 Made By The Department Of Highways,  
 State Of Ohio  
 Date March 2 1960  
 Division Deputy Director - Division No. 3  
 Registered Surveyor No. 6850

Received March 2 1960 at 1:45 P.M.  
 Recorded March 2 1960  
 Plat Book 32 Page 30-31  
 Fee Paid 10.00  
John P. Mitchell  
 Lorain County Recorder

**Note:**  
 All Monuments are set on the Centerline of Survey of the stations  
 indicated except as modified in details shown below

Details of Mon. set on PI

Mon. Point	Mon. Point	Mon. Point	Mon. Point
Back Sighting PI 156.37'	General Sighting PI 023.36'	Back Sighting PI 208.51'	General Sighting PI 83+44.98

**LEGEND**  
 Monuments  
 Monument Assemblies 2.4 Each

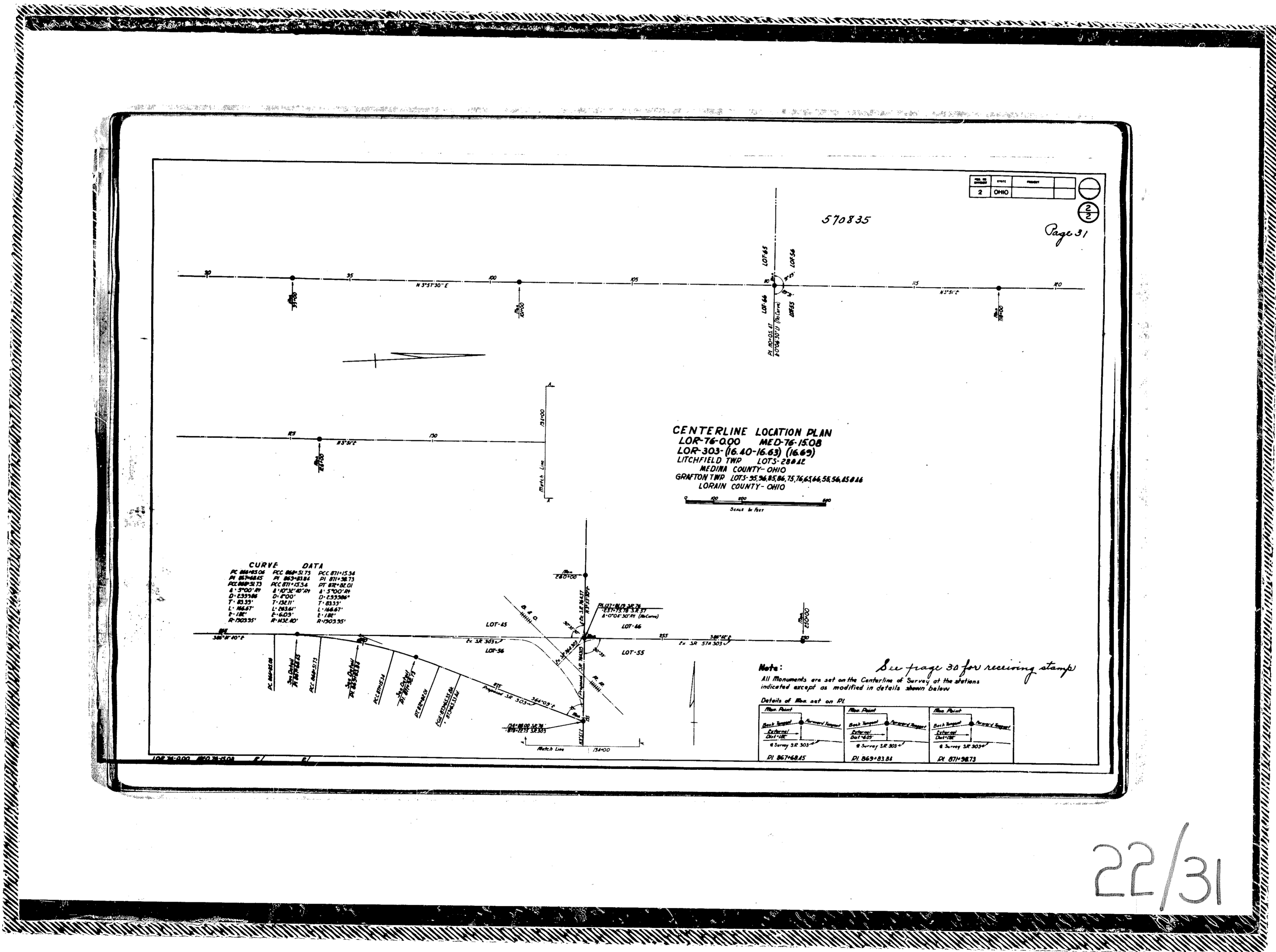
**CURVE DATA**

PC 81.01'
PT 89.42'
PI 107.00'
D 120000"
T 12.12'
L 150.00'
E 0.33'
R 284.37'

22/30

22/30

22/30



22/31

2431

22/31