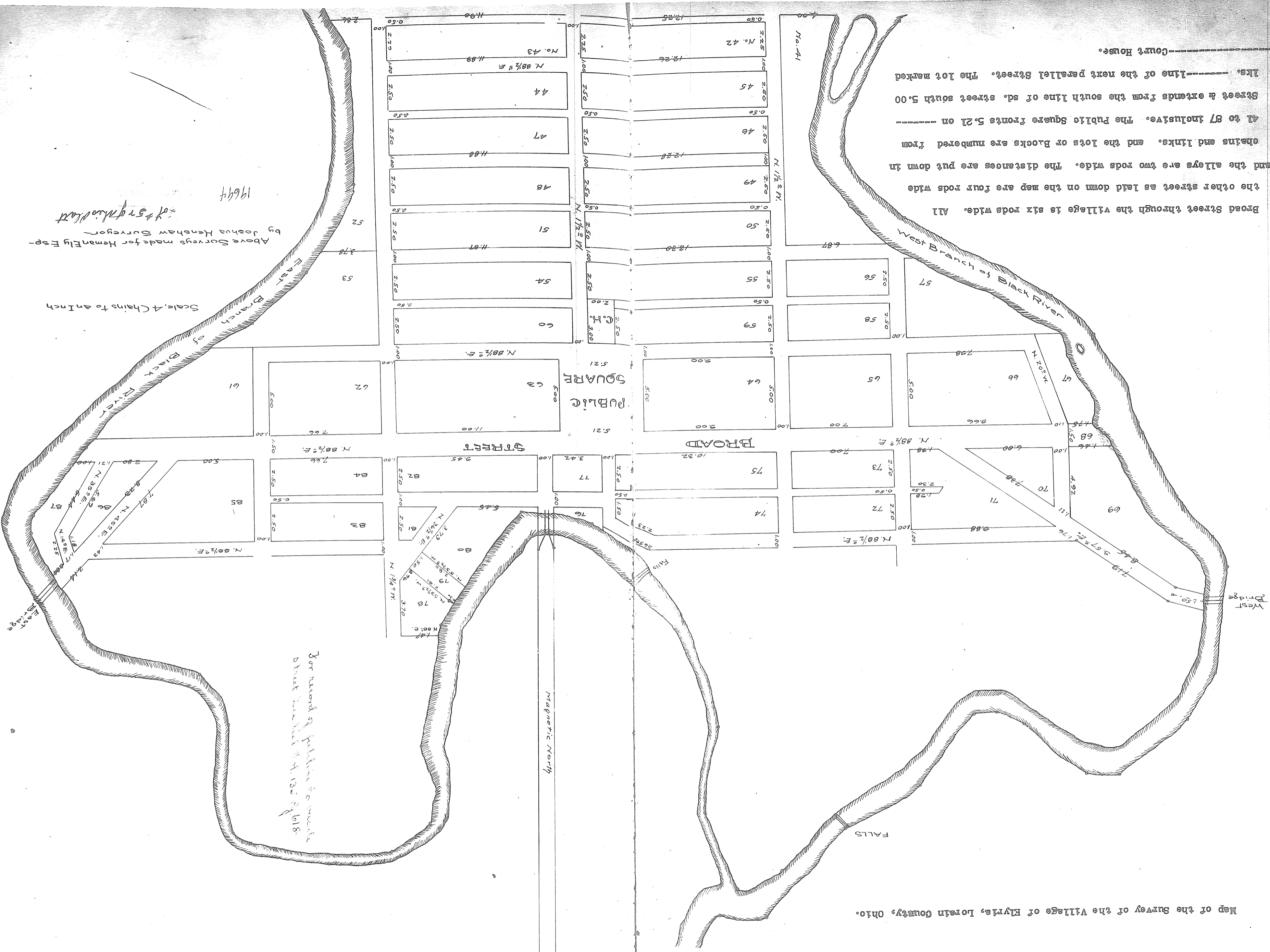


Map of the Survey of the Village of Elyria, Lorain County, Ohio.



Broad Street through the village is six rods wide. All the other streets as laid down on the map are four rods wide and the alleys are two rods wide. The distances are put down in chains and links, and the lots or blocks are numbered from 41 to 87 inclusive. The Public Square fronts 5.21 on Street & extends from the south line of sd. street south 5.00 lks. ---line of the next parallel Street. The lot marked ---Court House.

For record of platting to create District No. 1 of A. 135 of 1818

Scale 4 Chains to an Inch
 of 57 Rods
 1964
 Above Surveys made for Heman Ely Esq. by Joshua Henshaw Surveyor