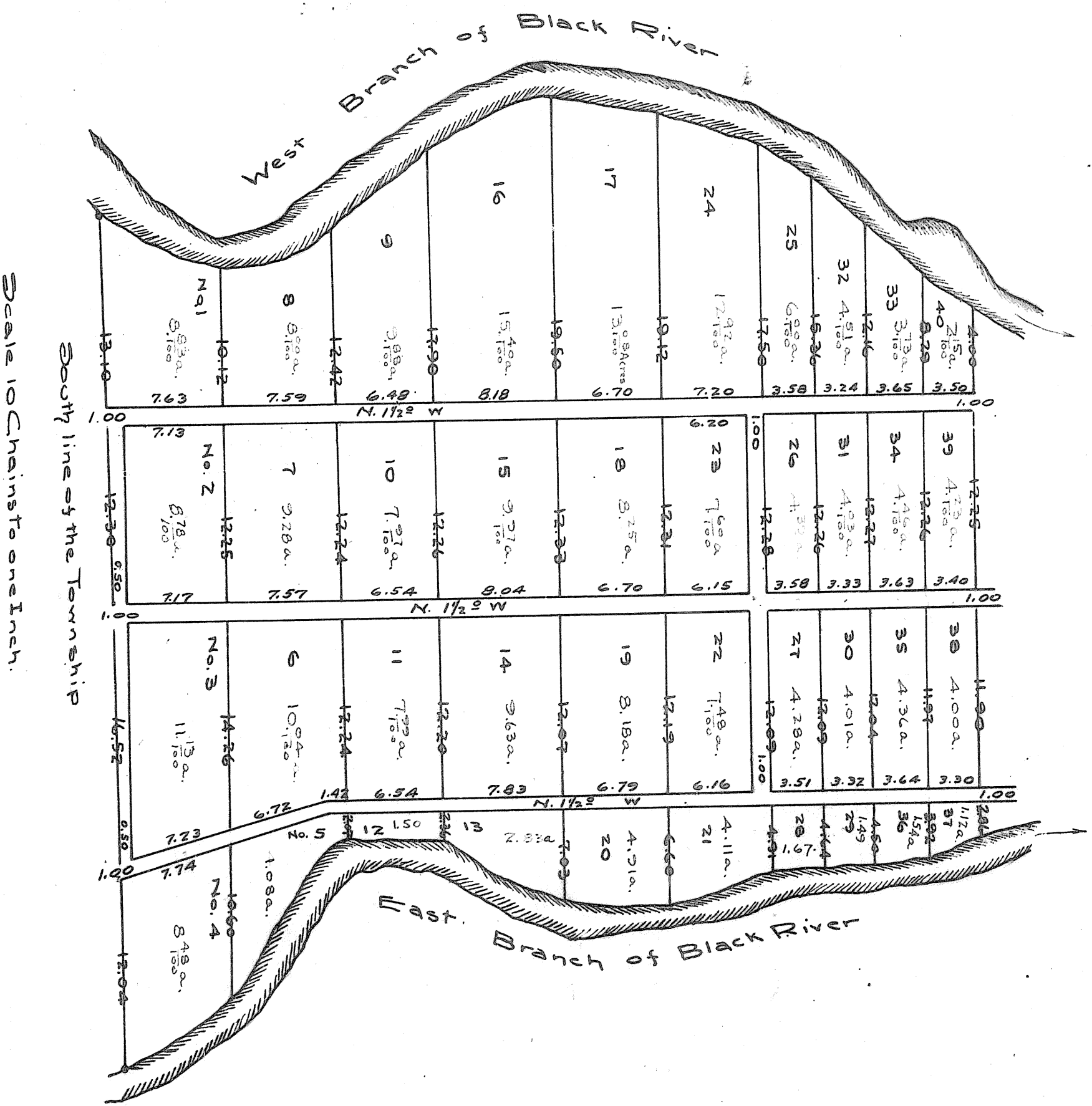


that she did of her own free will and accord sign & seal and deliver the same without the force or coercion or compulsion of her husband before me Joseph G Terrill Justice of the Peace ()
Recd July 6th & Recorded July 11th 1829)
Ebene. Whitton Recorder

Map of Lots numbers one to forty inclusive situate in Elyria between the East & West branches of Black River.
The distances are put down in Black figures in Chains & Links - and the quantity of land is put down in Red figures in Acres & hundredths of an Acre--



The above Surveys made in the Summer of 1820 for Heman Ely Esquire by
Joshua Henshaw, Surveyor.

FOR PROCEEDINGS RELATING TO THIS Deed
SEE CASE No. 15049 LORAIN CO. COMMON PLEAS CT.
C. M. WILLIAMS, CLERK.

Vol 21 Pg 52 (772)

Vol 21 Pg 52 (772)