

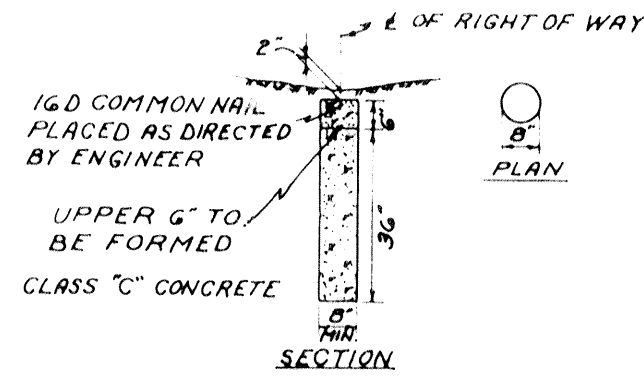
556713

FED. RD. DIVISION	STATE	PROJECT
2	OHIO	U-602 (B)

137
149

LORAIN COUNTY
LOR-57-16.42

2
2



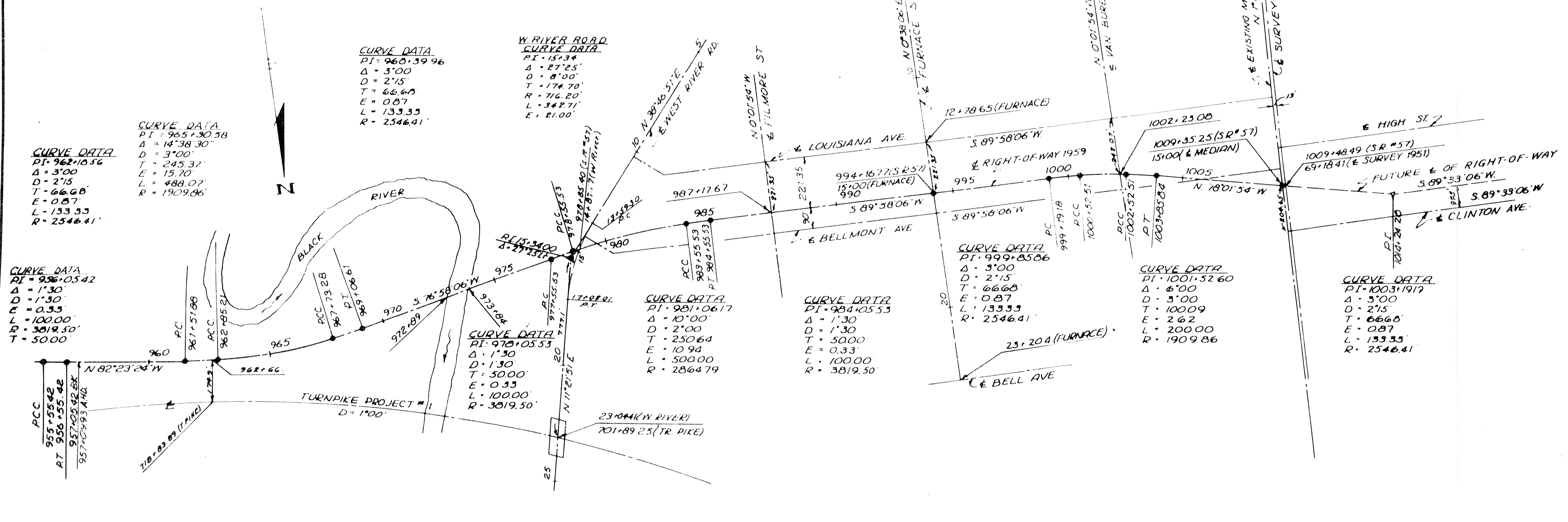
DETAIL OF RIGHT OF WAY
CENTER-LINE REFERENCE MONUMENTS

LOCATION OF MONUMENTS		
P.C.C. 955+55.42	P.T. 969+06.61	P.O.T. 994+16.77
P.T. 956+55.42	P.C. 977+55.53	P.C. 999+19.18
P.C. 961+51.88	P.C.C. 978+55.53	P.C.C. 1000+52.51
P.C.C. 962+85.21	P.C.C. 983+55.53	P.C.C. 1002+52.51
P.C.C. 967+73.28	P.T. 984+55.53	P.T. 1003+85.84
		P.O.T. 1009+35.25

LOCATION OF MONUMENT ASSEMBLY	
P.C.C. 978+55.53	
P.T. 15+3.4 (W. RIVER RD.)	
P.O.T. 994+16.77	
P.O.T. 1009+35.25	

The monuments shown hereon are to be placed on the Centerline of Right of Way by the contractor.

Monument Assemblies, as shown on Standard Construction Drawing P.I.-1 (Revised 7/15/58) of the Ohio Department of Highways, are to be placed during construction. All other monuments, as shown on sheet 2 of the Right of Way Plans, are to be placed after construction.



CURVE DATA
P.I. = 962+18.56
Δ = 3°00'
D = 2'15"
T = 66.68'
E = 0.87'
L = 133.33'
R = 2546.41'

CURVE DATA
P.I. = 965+30.58
Δ = 14°38'30"
D = 3°00'
T = 245.31'
E = 15.70'
L = 488.07'
R = 1909.86'

CURVE DATA
P.I. = 956+05.42
Δ = 1°30'
D = 1'30"
E = 0.33'
L = 100.00'
T = 50.00'

W. RIVER ROAD
CURVE DATA
P.I. = 15+3.4
Δ = 27°25'
D = 8'00"
T = 174.70'
R = 716.20'
L = 342.71'
E = 21.00'

CURVE DATA
P.I. = 978+05.53
Δ = 1°30'
D = 1'30"
T = 50.00'
E = 0.33'
L = 100.00'
R = 3019.50'

CURVE DATA
P.I. = 981+06.17
Δ = 10°00'
D = 2'00"
T = 250.64'
E = 10.94'
L = 500.00'
R = 2864.79'

CURVE DATA
P.I. = 984+05.53
Δ = 1°30'
D = 1'30"
T = 50.00'
E = 0.33'
L = 100.00'
R = 3819.50'

CURVE DATA
P.I. = 999+85.86
Δ = 3°00'
D = 2'15"
T = 66.68'
E = 0.87'
L = 133.33'
R = 2546.41'

CURVE DATA
P.I. = 1001+32.60
Δ = 6°00'
D = 3'00"
T = 100.09'
E = 2.62'
L = 200.00'
R = 1909.86'

CURVE DATA
P.I. = 1003+19.17
Δ = 3°00'
D = 2'15"
T = 66.68'
E = 0.87'
L = 133.33'
R = 2546.41'

LOCATION (CENTER LINE) PLAT

LOR-57-16.42

For Journal Entry, see OK Vol 385 #130635 Pg 102

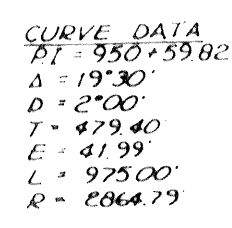
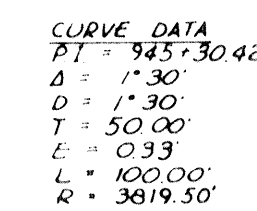
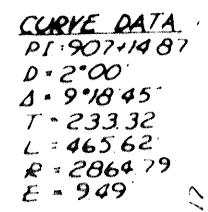
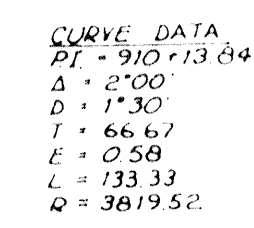
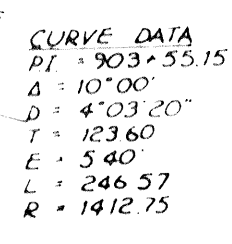
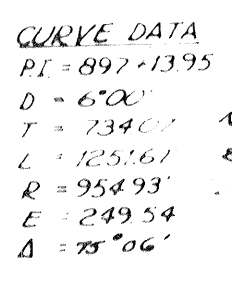
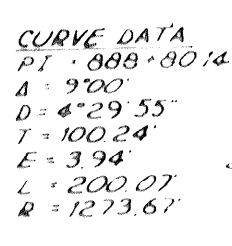
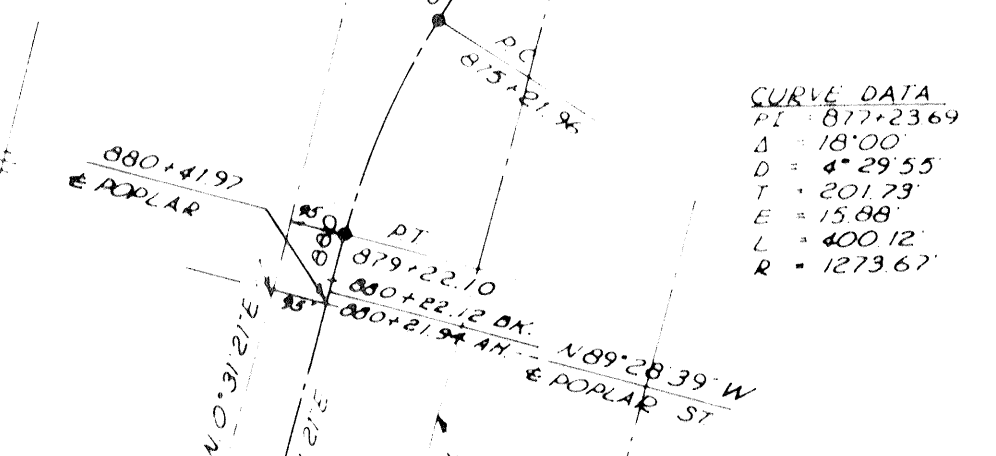
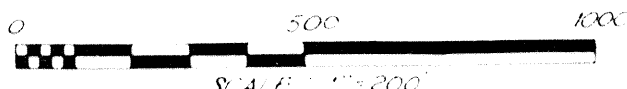
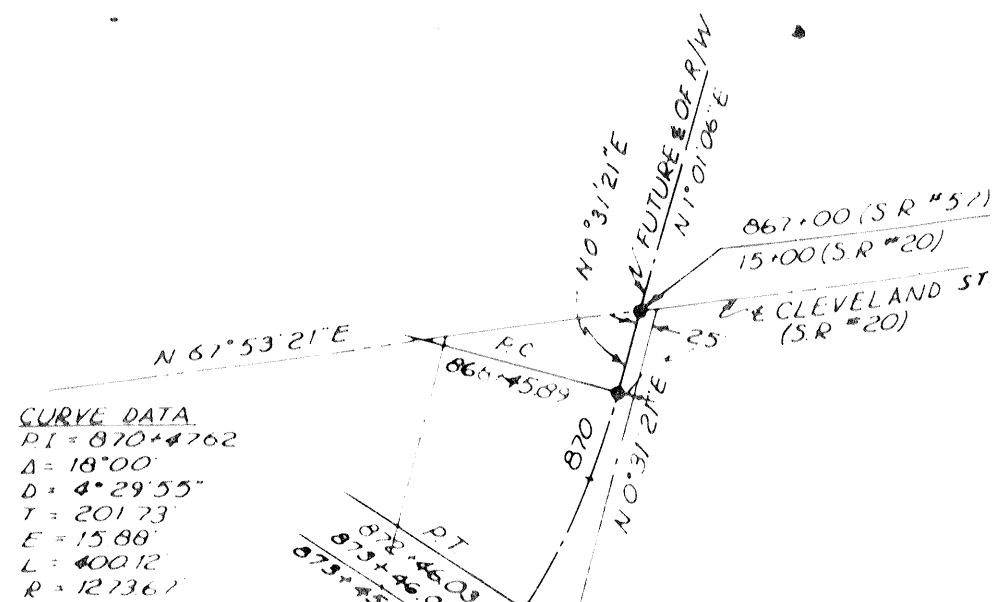
LOCATION PLAT

DEPARTMENT OF HIGHWAYS
LOR 57-(16.42)
ELYRIA TOWNSHIP
LORAIN COUNTY

556713

FED. DIVISION	STATE	PROJECT	136
2	OHIO	U-602 (15)	149
LORAIN COUNTY			1
LOR-57-16.42			2

RECEIVED June 1, 1959 AT 1:23 P.M.
 RECORDED June 1, 1959
 PLAT BOOK 21 PAGE 42-43
 SIGNED Leola B. Mitchell RECORDER LORAIN COUNTY, OHIO
 FEE 10.00
 SIGNED C. L. Selman PE. NO. 6311
 DATE 5-15-1959 DIVISION DEPUTY DIRECTOR



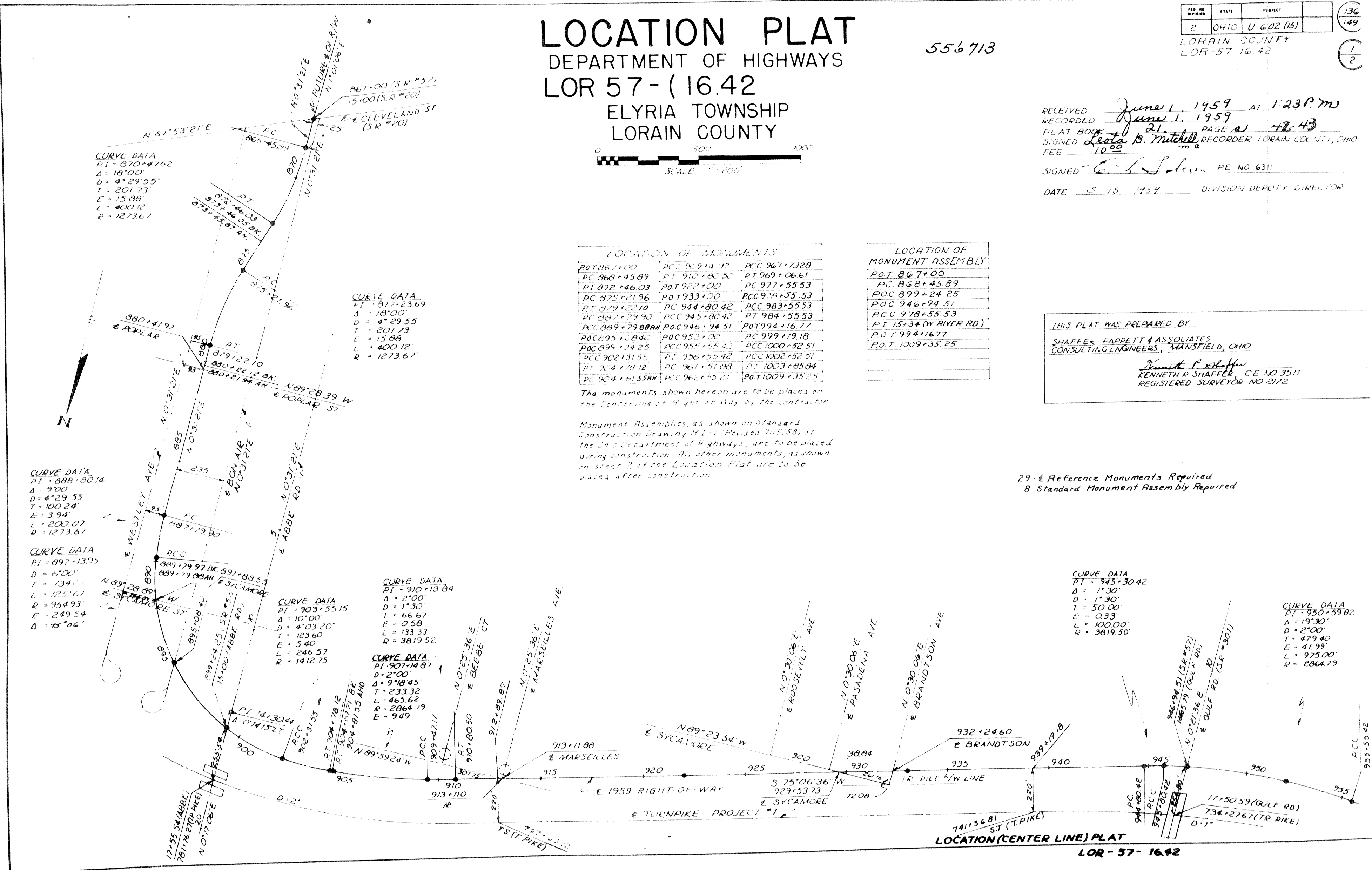
LOCATION OF MONUMENTS		
POT 867+100	PCC 909+4.17	PCC 967+7328
PC 868+45.89	PT 910+80.20	PT 969+06.61
PT 872+46.03	POT 922+100	PC 971+55.53
PC 875+21.96	POT 933+100	PCC 978+55.53
PT 879+22.10	PC 944+80.42	PCC 983+55.53
PC 882+29.90	PCC 945+80.42	PT 984+55.53
PCC 889+79.88	PCC 946+94.51	POT 994+16.77
PCC 895+10.40	PCC 952+100	PC 999+19.18
PCC 895+24.25	PCC 955+55.42	PCC 1000+52.51
PCC 902+31.55	PT 956+55.42	PCC 1002+52.51
PT 904+28.12	PC 961+51.08	PT 1003+85.04
PC 904+81.55	PCC 962+5.21	POT 1009+35.25

LOCATION OF MONUMENT ASSEMBLY	
POT 867+100	
PC 868+45.89	
PCC 899+24.25	
PCC 946+94.51	
PCC 978+55.53	
PT 15134 (W RIVER RD)	
POT 994+16.77	
POT 1009+35.25	

The monuments shown herein are to be placed on the Centerline of Right-of-Way by the contractor.
 Monument Assemblies, as shown on Standard Construction Drawing #11 (Revised 7-15-58) of the Ohio Department of Highways, are to be placed during construction. All other monuments, as shown on sheet 2 of the Location Plat are to be placed after construction.

THIS PLAT WAS PREPARED BY
 SHAFER, PAPPLITT & ASSOCIATES
 CONSULTING ENGINEERS, MANSFIELD, OHIO
 Kenneth P. Shaffer
 KENNETH R. SHAFER, C.E. NO. 3511
 REGISTERED SURVEYOR NO. 2172

29 - Reference Monuments Required
 8 - Standard Monument Assembly Required



LOCATION (CENTER LINE) PLAT
 LOR-57-16.42