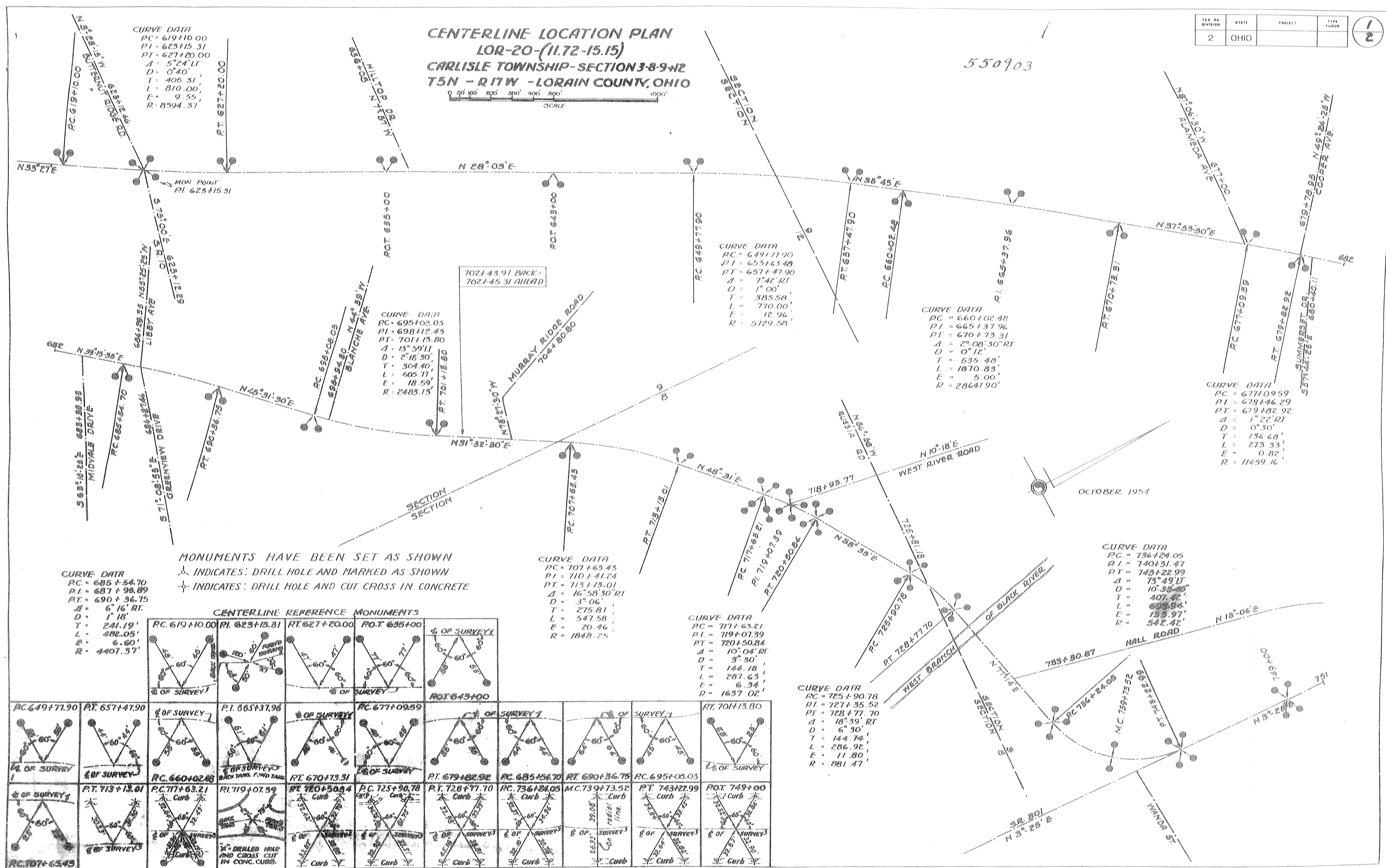


FED. RD. DIVISION	STATE	PROJECT	TYPE FUND
2	OHIO		

1/2

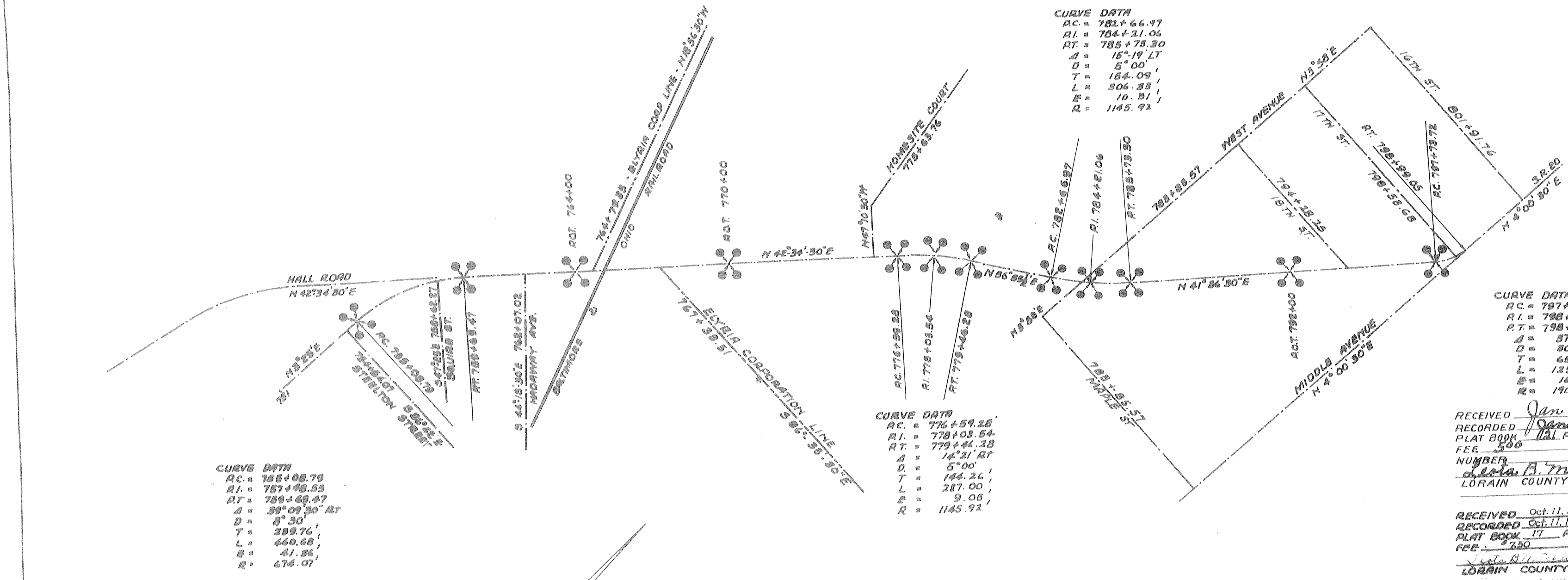


LOR-20-(11.72-15.15) CENTERLINE REFERENCE MON. 1/2

FED. ROAD DISTRICT	STATE	PROJECT	TYPE	FIGURE
2	OHIO			2

CENTERLINE LOCATION PLAN
LOR-20-(11.72-15.15)
CARLISLE TOWNSHIP-SECTION 3-8-9+12
T5N-R17W-LORAIN COUNTY- OHIO

550903



CURVE DATA
 A.C. = 782+66.97
 R.I. = 784+21.06
 R.T. = 785+73.30
 Δ = 15° 19' LT
 D = 5' 00"
 T = 154.09'
 L = 306.33'
 E = 10.31'
 R = 1145.92'

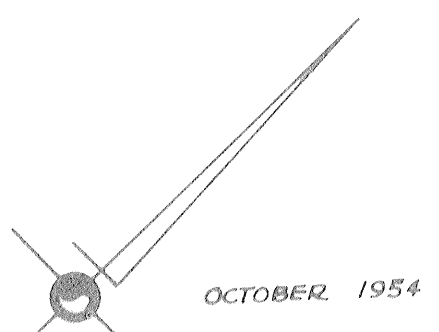
CURVE DATA
 A.C. = 797+73.72
 R.I. = 798+86.75
 R.T. = 798+99.05
 Δ = 57° 36' LT
 D = 30' 00"
 T = 65.08'
 L = 125.83'
 E = 19.76'
 R = 170.94'

CURVE DATA
 A.C. = 776+59.28
 R.I. = 778+03.64
 R.T. = 779+46.28
 Δ = 14° 21' RT
 D = 5' 00"
 T = 144.24'
 L = 287.00'
 E = 9.05'
 R = 1145.92'

CURVE DATA
 A.C. = 755+08.79
 R.I. = 757+48.55
 R.T. = 759+69.47
 Δ = 59° 00' 30" RT
 D = 8' 30"
 T = 289.76'
 L = 460.68'
 E = 41.86'
 R = 674.07'

RECEIVED Jan. 30, 1954 at 10:23 am
 RECORDED Jan. 30, 1954
 PLAT BOOK 171 PAGE 28
 FEE 5.00 PAID
 NUMBER
Oliver B. Mitchell m.e.
 LORAIN COUNTY RECORDER

RECEIVED Oct. 11, 1954
 RECORDED Oct. 11, 1954
 PLAT BOOK 171 PAGE 14
 FEE 2.50 PAID
 LORAIN COUNTY RECORDER



CENTERLINE REFERENCE MONUMENTS WILL BE SET AFTER CONSTRUCTION HAS BEEN COMPLETED

Δ INDICATES: DRILL HOLE AND MARKED AS SHOWN
 ⊕ INDICATES: DRILL HOLE AND CUT CROSS IN CONCRETE

MONUMENTS HAVE BEEN SET AS SHOWN

HEREBY CERTIFY THAT THE ACCOMPANYING PLAT IS A TRUE DELINEATION OF A SURVEY MADE BY THE DEPARTMENT OF HIGHWAYS, STATE OF OHIO
Oliver B. Mitchell
 DIVISION ENGINEER, DIVISION 3
 PROFESSIONAL ENGINEER #985

Recorded (Change of monument location.)

CENTERLINE REFERENCE MONUMENTS											
P.C. 755+08.79 Curb 	P.T. 759+69.47 Curb 	P.O.T. 764+00 Curb 	P.O.T. 770+00 Curb 	P.C. 776+59.28 Curb 	P.I. 778+03.54 Sidewalk 	P.T. 779+46.28 Curb 	P.C. 782+66.97 Sidewalk 	P.I. 784+21.06 Curb 	P.T. 785+73.30 Curb 	P.O.T. 792+00 Curb 	P.C. 797+73.72 Curb

LOR-20-(11.72-15.15) CENTERLINE REFERENCE MON. 2/2