

**Mark R. Stewart**  
**Lorain County Auditor**

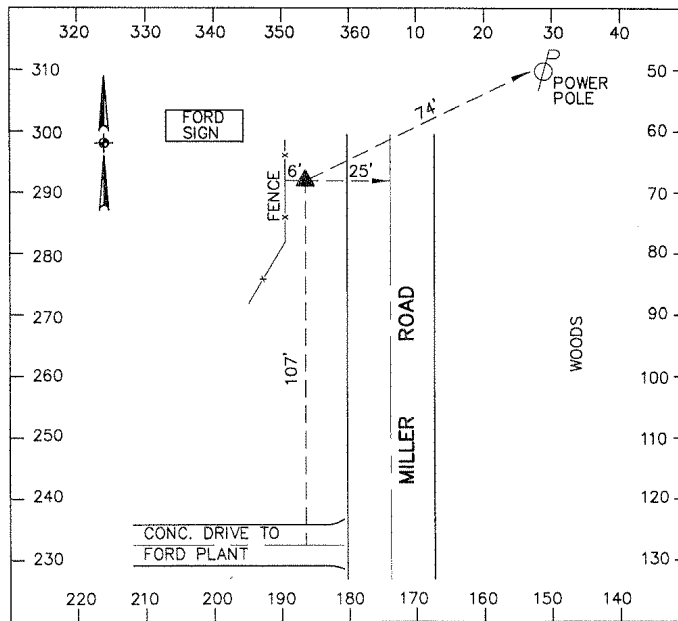
2002 GPS Survey

Monumentation

Data Sheets

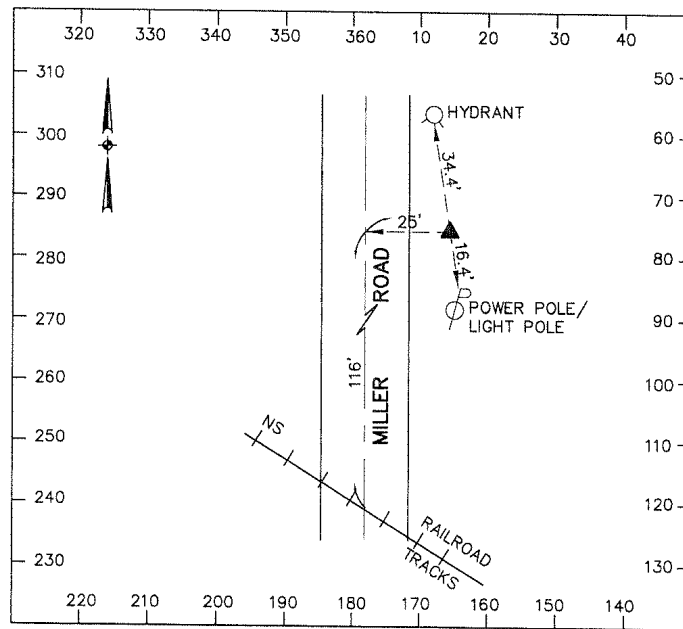
## Lorain County Auditor's Office Geodetic Survey Marker

Station Name: 2002-01 USGS Quad: Avon Type of Mark: Bronze Disk Stamping on Mark: 2002-01 Horizontal Datum: NAD83(1995) Latitude: 41-29-00.015814 North (y) Meters: 201829.213 North (y) USFeet: 662168.011 Convergence: 0-17-17.74 State Plane Coordinate System Zone: Ohio North (3401) Vertical Datum: NAVD88 Elevation (z) Meters: 190.242 Location: To reach the monument, commence at the intersection of Walker Road and Miller Road in Avon Lake and travel South on Miller Road 0.7 miles more or less to the station on the right. The station is a bronze disk set in concrete.	Alias: None Township: Avon Set By: KS Associates, Inc. Survey By: KS Associates, Inc. Horizontal Order: First    Method: GPS Longitude: 82-03-40.361318 East (x) Meters: 636645.127 East (x) USFeet: 2088726.556 Combined Scale Factor: 0.99994099 Vertical Order: Second Elevation (z) USFeet: 624.152
--	---



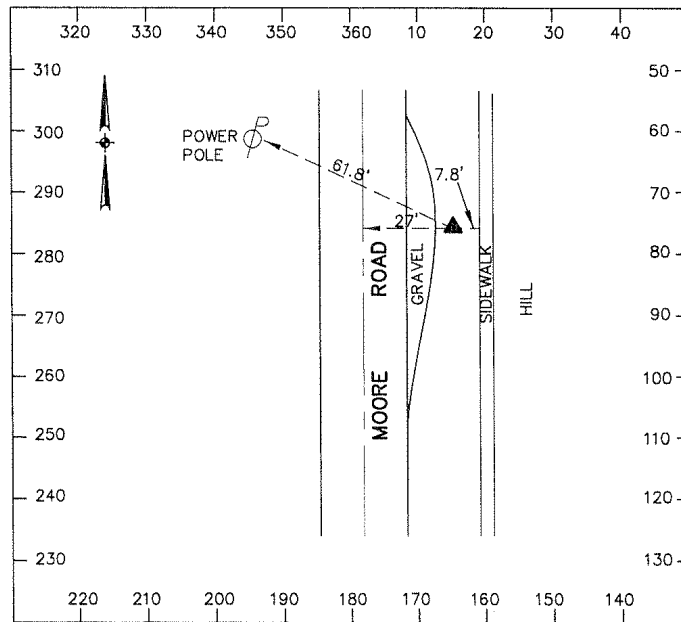
## Lorain County Auditor's Office Geodetic Survey Marker

Station Name: 2002-02 USGS Quad: Avon Type of Mark: Bronze Disk Stamping on Mark: 2002-02 Horizontal Datum: NAD83(1995) Latitude: 41-28-46.568975 North (y) Meters: 201414.444 North (y) USFeet: 660807.223 Convergence: 0-17-18.07 State Plane Coordinate System Zone: Ohio North (3401) Vertical Datum: NAVD88 Elevation (z) Meters: 190.672 Location: To reach the monument, commence at the intersection of Walker Road and Miller Road in Avon Lake and travel South on Miller Road 1.0 miles more or less to the station on the left. The station is a bronze disk set in concrete.	Alias: None Township: Avon Set By: KS Associates, Inc. Survey By: KS Associates, Inc. Horizontal Order: First    Method: GPS Longitude: 82-03-39.861946 East (x) Meters: 636658.800 East (x) USFeet: 2088771.412 Combined Scale Factor: 0.99994045 Vertical Order: Second Elevation (z) USFeet: 625.563
---	---



## Lorain County Auditor's Office Geodetic Survey Marker

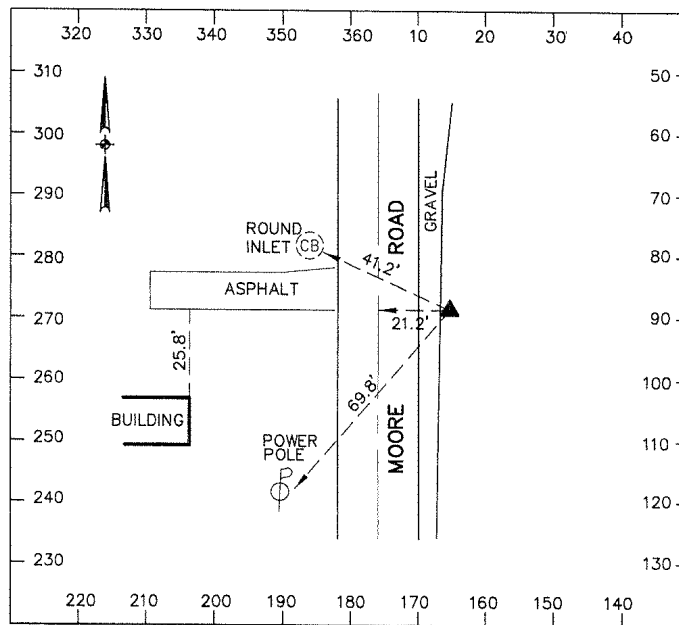
Station Name: 2002-03 USGS Quad: Avon Type of Mark: Bronze Disk Stamping on Mark: 2002-03 Horizontal Datum: NAD83(1995) Latitude: 41-29-22.408400 North (y) Meters: 202526.114 North (y) USFeet: 664454.427 Convergence: 0-17-51.54 State Plane Coordinate System Zone: Ohio North (3401) Vertical Datum: NAVD88 Elevation (z) Meters: 187.079 Location: To reach the monument, commence at the intersection of Walker Road and Moore Road in Avon Lake and travel South on Moore Road 0.3 miles more or less to the station on the left. The station is a bronze disk set in concrete.	Alias: None Township: Avon Set By: KS Associates, Inc. Survey By: KS Associates, Inc. Horizontal Order: First    Method: GPS Longitude: 82-02-48.917853 East (x) Meters: 637834.935 East (x) USFeet: 2092630.118 Combined Scale Factor: 0.99994228 Vertical Order: Second Elevation (z) USFeet: 613.774
---	---



## Lorain County Auditor's Office Geodetic Survey Marker

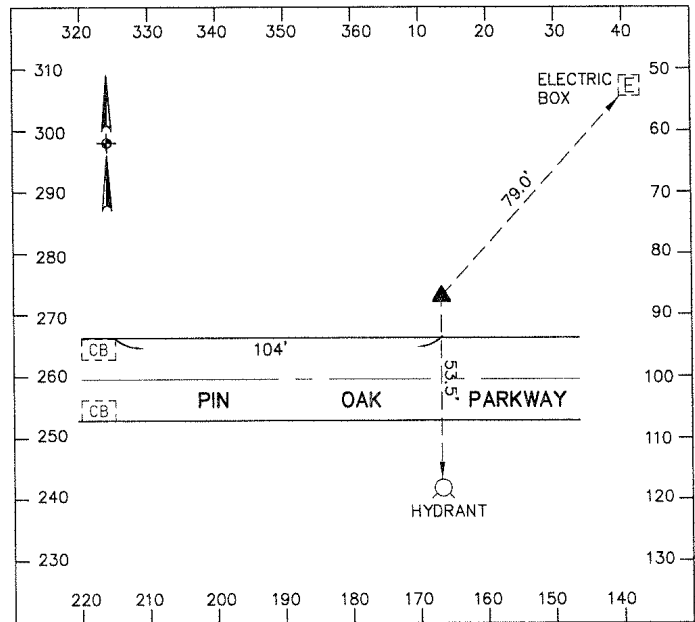
Station Name: 2002-04 USGS Quad: Avon Type of Mark: Bronze Disk Stamping on Mark: 2002-04 Horizontal Datum: NAD83(1995) Latitude: 41-29-08.044825 North (y) Meters: 202082.971 North (y) USFeet: 663000.547 Convergence: 0-17-51.35 State Plane Coordinate System Zone: Ohio North (3401) Vertical Datum: NAVD88 Elevation (z) Meters: 190.427	Alias: None Township: Avon Set By: KS Associates, Inc. Survey By: KS Associates, Inc. Horizontal Order: First    Method: GPS Longitude: 82-02-49.207038 East (x) Meters: 637830.529 East (x) USFeet: 2092615.661 Combined Scale Factor: 0.99994124 Vertical Order: Second Elevation (z) USFeet: 624.760
---	---

Location: To reach the monument, commence at the intersection of Walker Road and Moore Road in Avon Lake and travel South on Moore Road 0.5 miles more or less to the station on the left. The station is a bronze disk set in concrete.



## Lorain County Auditor's Office Geodetic Survey Marker

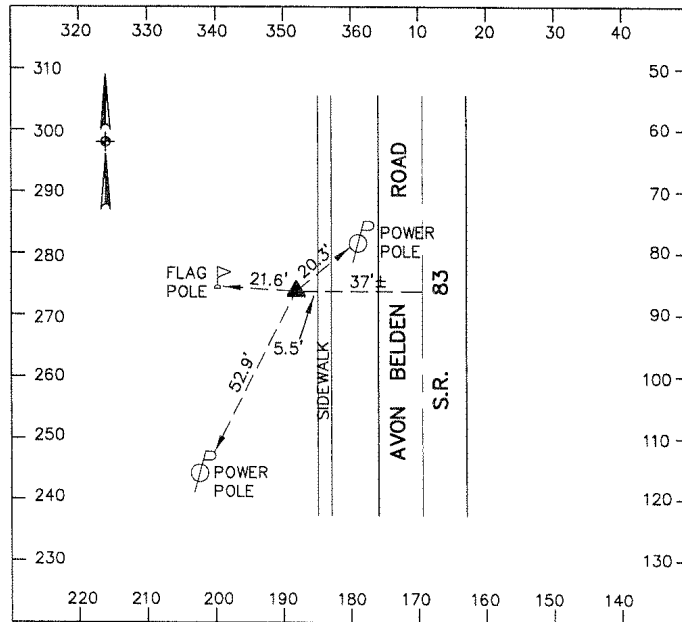
Station Name: 2002-05 USGS Quad: Avon Type of Mark: Bronze Disk Stamping on Mark: 2002-05 Horizontal Datum: NAD83(1995) Latitude: 41-28-54.106643 North (y) Meters: 201657.542 North (y) USFeet: 661604.787 Convergence: 0-18-15.91 State Plane Coordinate System Zone: Ohio North (3401) Vertical Datum: NAVD88 Elevation (z) Meters: 189.891 Location: To reach the monument, commence at the intersection of Moore Road and Pin Oak Parkway in Avon Lake and travel East on Pin Oak Parkway 0.5 miles more or less to the station on the left. The station is a bronze disk set in concrete.	Alias: None Township: Avon Set By: KS Associates, Inc. Survey By: KS Associates, Inc. Horizontal Order: First    Method: GPS Longitude: 82-02-11.822828 East (x) Meters: 638700.031 East (x) USFeet: 2095468.350 Combined Scale Factor: 0.99994083 Vertical Order: Second Elevation (z) USFeet: 623.002
---	---





## Lorain County Auditor's Office Geodetic Survey Marker

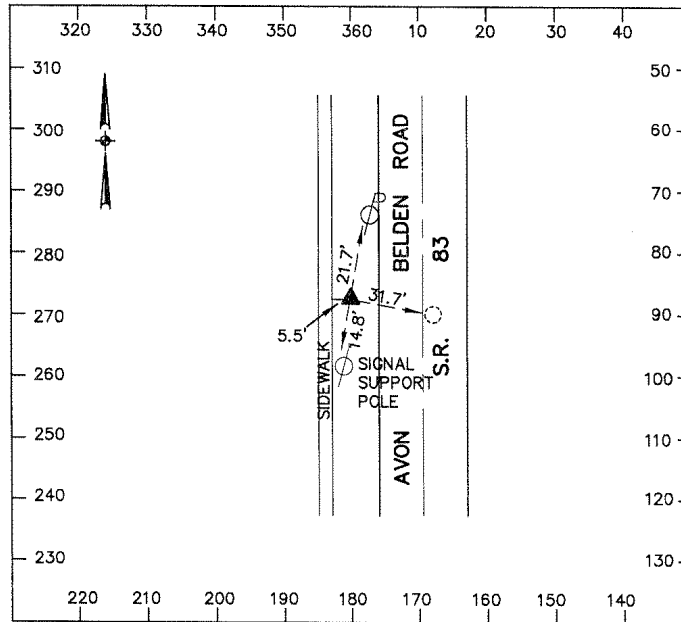
Station Name: 2002-07 USGS Quad: Avon Type of Mark: Bronze Disk Stamping on Mark: 2002-07 Horizontal Datum: NAD83(1995) Latitude: 41-29-40.923063 North (y) Meters: 203109.743 North (y) USFeet: 666369.216 Convergence: 0-18-57.45 State Plane Coordinate System Zone: Ohio North (3401) Vertical Datum: NAVD88 Elevation (z) Meters: 189.908 Location: To reach the monument, commence at the intersection of Walker Road and Avon Belden Road in Avon Lake and travel North on Avon Belden Road 0.1 miles more or less to the station on the left. The station is a bronze disk in concrete.	Alias: None Township: Avon Set By: KS Associates, Inc. Survey By: KS Associates, Inc. Horizontal Order: First    Method: GPS Longitude: 82-01-08.590130 East (x) Meters: 640158.986 East (x) USFeet: 2100254.941 Combined Scale Factor: 0.99994250 Vertical Order: Second Elevation (z) USFeet: 623.058
---	---





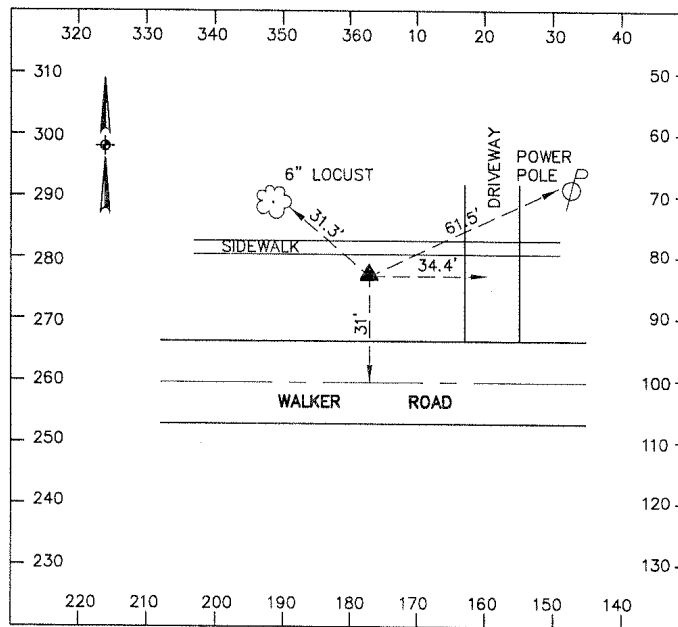
## Lorain County Auditor's Office Geodetic Survey Marker

Station Name: 2002-08 USGS Quad: Avon Type of Mark: Bronze Disk Stamping on Mark: 2002-08 Horizontal Datum: NAD83(1995) Latitude: 41-29-31.041112 North (y) Meters: 202804.871 North (y) USFeet: 665368.980 Convergence: 0-18-57.35 State Plane Coordinate System Zone: Ohio North (3401) Vertical Datum: NAVD88 Elevation (z) Meters: 190.443 Location: To reach the monument, commence at the intersection of Walker Road and Avon Belden Road in Avon Lake and travel South on Avon Belden Road 0.1 miles more or less to the station on the right. The station is a bronze disk in concrete.	Alias: None Township: Avon Set By: KS Associates, Inc. Survey By: KS Associates, Inc. Horizontal Order: First    Method: GPS Longitude: 82-01-08.743855 East (x) Meters: 640157.102 East (x) USFeet: 2100248.759 Combined Scale Factor: 0.99994206 Vertical Order: Second Elevation (z) USFeet: 624.813
--	---



## Lorain County Auditor's Office Geodetic Survey Marker

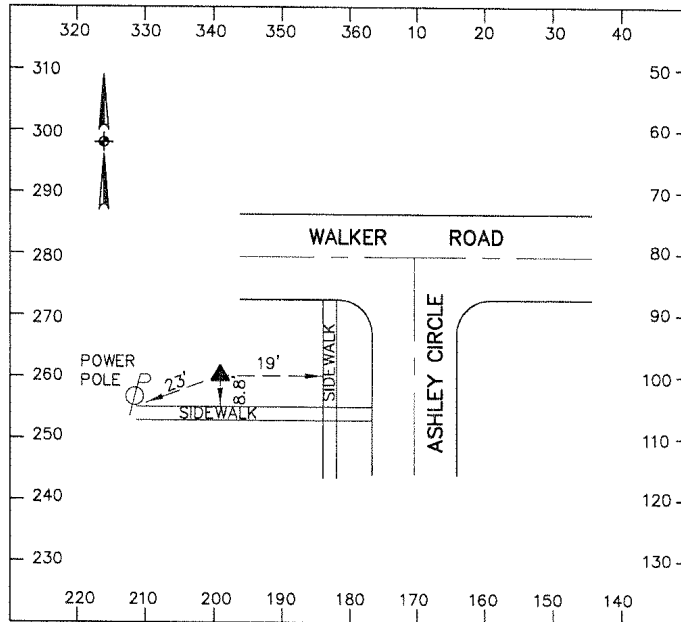
Station Name: 2002-09 USGS Quad: North Olmsted Type of Mark: Bronze Disk Stamping on Mark: 2002-09 Horizontal Datum: NAD83(1995) Latitude: 41-29-34.574674 North (y) Meters: 202929.423 North (y) USFeet: 665777.616 Convergence: 0-20-14.57 State Plane Coordinate System Zone: Ohio North (3401) Vertical Datum: NAVD88 Elevation (z) Meters: 190.997 Location: To reach the monument, commence at the intersection of Walker Road and Lear Nagle Road in Avon Lake and travel East on Lear Nagle Road 0.1 miles more or less to the station on the left. The station is a bronze disk in concrete.	Alias: None Township: Avon Set By: KS Associates, Inc. Survey By: KS Associates, Inc. Horizontal Order: First    Method: GPS Longitude: 81-59-11.199428 East (x) Meters: 642882.914 East (x) USFeet: 2109191.695 Combined Scale Factor: 0.99994209 Vertical Order: Second Elevation (z) USFeet: 626.630
---	---



## Lorain County Auditor's Office Geodetic Survey Marker

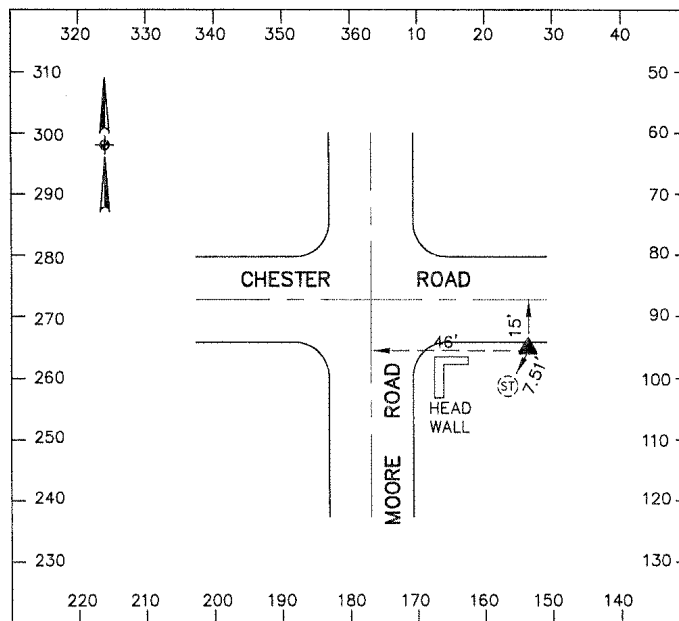
Station Name: 2002-10 USGS Quad: North Olmsted Type of Mark: Bronze Disk Stamping on Mark: 2002-10 Horizontal Datum: NAD83(1995) Latitude: 41-29-33.986098 North (y) Meters: 202909.434 North (y) USFeet: 665712.036 Convergence: 0-20-05.73 State Plane Coordinate System Zone: Ohio North (3401) Vertical Datum: NAVD88 Elevation (z) Meters: 190.956	Alias: None Township: Avon Set By: KS Associates, Inc. Survey By: KS Associates, Inc. Horizontal Order: First    Method: GPS Longitude: 81-59-24.659022 East (x) Meters: 642570.829 East (x) USFeet: 2108167.794 Combined Scale Factor: 0.99994208 Vertical Order: Second Elevation (z) USFeet: 626.495
--	---

Location: To reach the monument, commence at the intersection of Walker Road and Lear Nagle Road in Avon Lake and travel West on Lear Nagle Road 0.1 miles more or less to the station on the left. The station is a bronze disk in concrete.



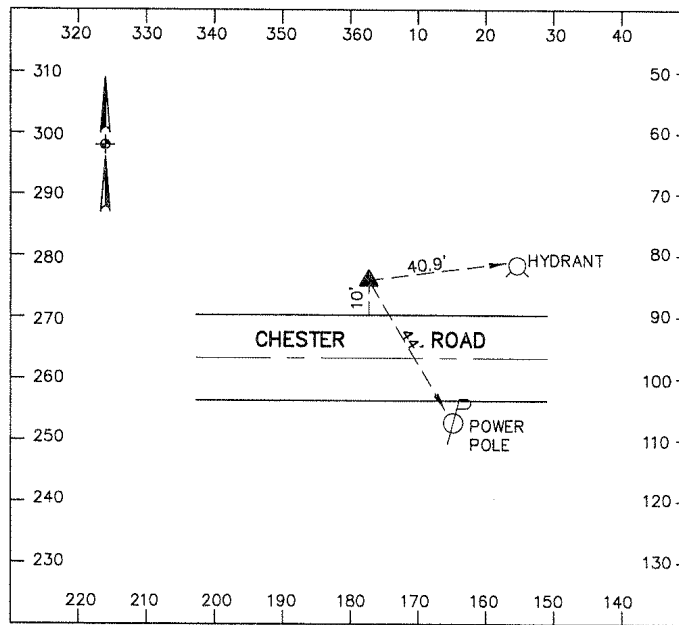
## Lorain County Auditor's Office Geodetic Survey Marker

Station Name: 2002-11 USGS Quad: Avon Type of Mark: Bronze Disk Stamping on Mark: 2002-11 Horizontal Datum: NAD83(1995) Latitude: 41-28-01.245143 North (y) Meters: 200021.949 North (y) USFeet: 656238.677 Convergence: 0-17-49.74 State Plane Coordinate System Zone: Ohio North (3401) Vertical Datum: NAVD88 Elevation (z) Meters: 190.748 Location: The station is located at the Southeast corner of the intersection of Moore Road and Chester Road in Avon. The station is a bronze disk in concrete.	Alias: None Township: Avon Set By: KS Associates, Inc. Survey By: KS Associates, Inc. Horizontal Order: First    Method: GPS Longitude: 82-02-51.655489 East (x) Meters: 637784.419 East (x) USFeet: 2092464.381 Combined Scale Factor: 0.99993888 Vertical Order: Second Elevation (z) USFeet: 625.813
---	---



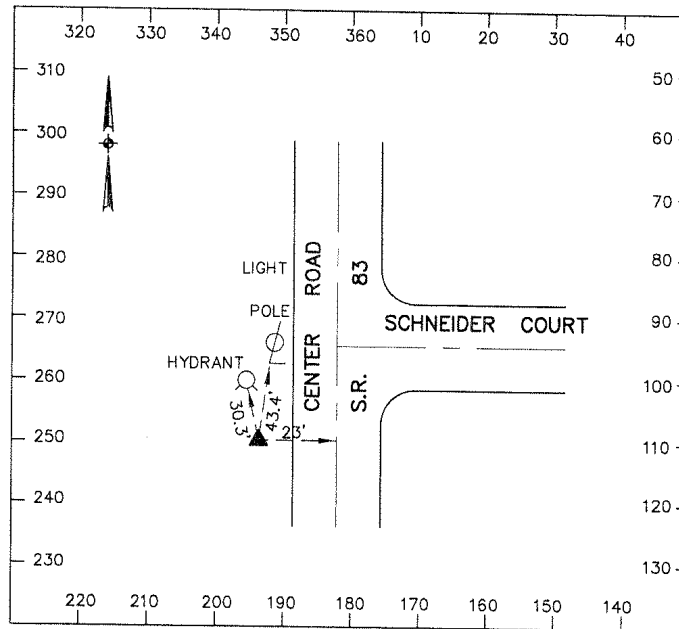
## Lorain County Auditor's Office Geodetic Survey Marker

Station Name: 2002-12 USGS Quad: Avon Type of Mark: Bronze Disk Stamping on Mark: 2002-12 Horizontal Datum: NAD83(1995) Latitude: 41-28-01.552837 North (y) Meters: 200033.184 North (y) USFeet: 656275.537 Convergence: 0-17-59.21 State Plane Coordinate System Zone: Ohio North (3401) Vertical Datum: NAVD88 Elevation (z) Meters: 190.803 Location: To reach the monument, commence at the intersection of Moore Road and Chester Road in Avon and travel East on Chester Road 0.2 miles more or less to the station on the left. The station is a bronze disk in concrete.	Alias: None Township: Avon Set By: KS Associates, Inc. Survey By: KS Associates, Inc. Horizontal Order: First    Method: GPS Longitude: 82-02-37.237901 East (x) Meters: 638118.915 East (x) USFeet: 2093561.806 Combined Scale Factor: 0.99993888 Vertical Order: Second Elevation (z) USFeet: 625.993
--	---



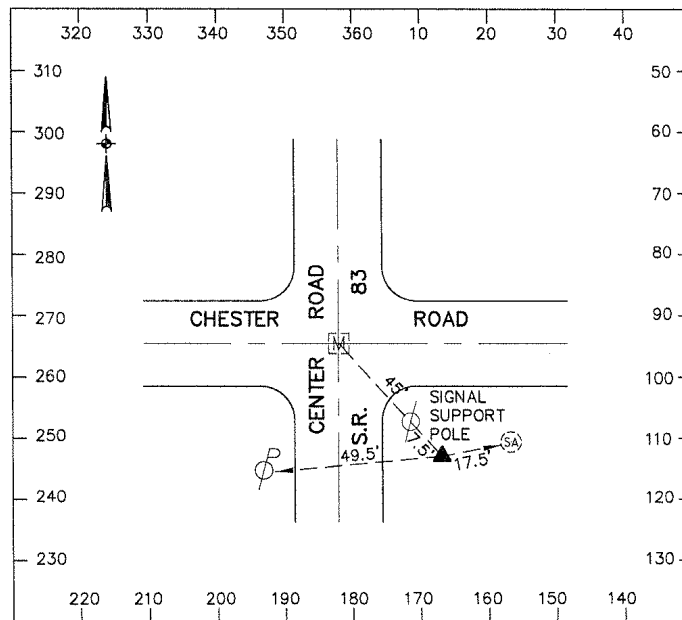
## Lorain County Auditor's Office Geodetic Survey Marker

Station Name: 2002-13 USGS Quad: Avon Type of Mark: Bronze Disk Stamping on Mark: 2002-13 Horizontal Datum: NAD83(1995) Latitude: 41-28-17.021325 North (y) Meters: 200521.161 North (y) USFeet: 657876.510 Convergence: 0-18-56.08 State Plane Coordinate System Zone: Ohio North (3401) Vertical Datum: NAVD88 Elevation (z) Meters: 194.086 Location: The station is located at the Southwest corner of the intersection of Schneider Court and Center Road in Avon. The station is a bronze disk in concrete.	Alias: None Township: Avon Set By: KS Associates, Inc. Survey By: KS Associates, Inc. Horizontal Order: First    Method: GPS Longitude: 82-01-10.673289 East (x) Meters: 640124.926 East (x) USFeet: 2100143.194 Combined Scale Factor: 0.99993889 Vertical Order: Second Elevation (z) USFeet: 636.764
---	---



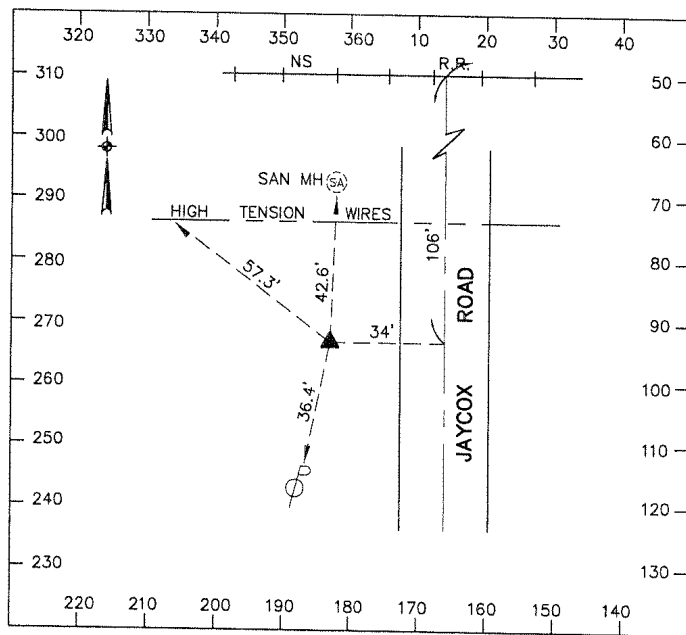
## Lorain County Auditor's Office Geodetic Survey Marker

Station Name: 2002-14 USGS Quad: Avon Type of Mark: Bronze Disk Stamping on Mark: 2002-14 Horizontal Datum: NAD83(1995) Latitude: 41-28-01.406376 North (y) Meters: 200039.496 North (y) USFeet: 656296.246 Convergence: 0-18-56.31 State Plane Coordinate System Zone: Ohio North (3401) Vertical Datum: NAVD88 Elevation (z) Meters: 201.567 Location: The station is located at the Southeast corner of the intersection of Chester Road and Center Road in Avon. The station is a bronze disk in concrete.	Alias: None Township: Avon Set By: KS Associates, Inc. Survey By: KS Associates, Inc. Horizontal Order: First    Method: GPS Longitude: 82-01-10.330225 East (x) Meters: 640135.539 East (x) USFeet: 2100178.015 Combined Scale Factor: 0.99993718 Vertical Order: Second Elevation (z) USFeet: 661.309
--	---



## Lorain County Auditor's Office Geodetic Survey Marker

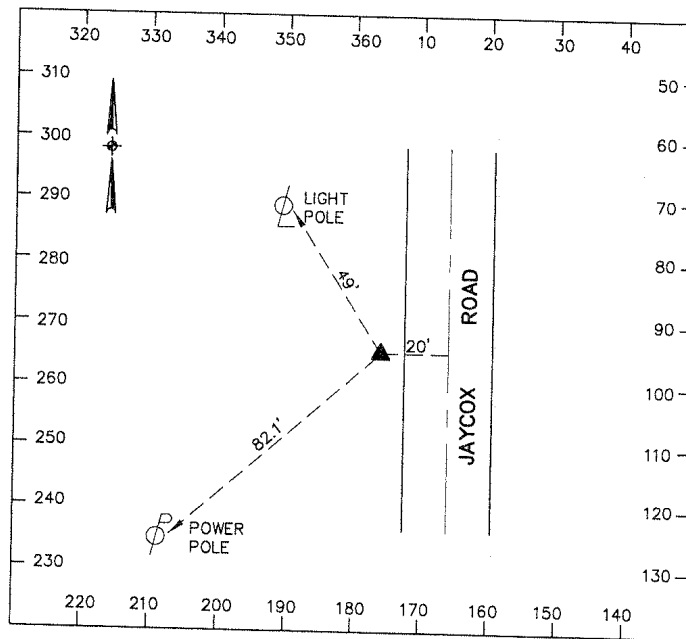
Station Name: 2002-15 USGS Quad: North Olmsted Type of Mark: Bronze Disk Stamping on Mark: 2002-15 Horizontal Datum: NAD83(1995) Latitude: 41-28-40.698004 North (y) Meters: 201261.155 North (y) USFeet: 660304.305 Convergence: 0-19-44.33 State Plane Coordinate System Zone: Ohio North (3401) Vertical Datum: NAVD88 Elevation (z) Meters: 192.528 Location: To reach the monument, commence at the intersection of Chester Road and Jaycox Road in Avon and travel North on Jaycox Road 0.7 miles more or less to the station on the left. The station is a bronze disk in concrete.	Alias: None Township: Avon Set By: KS Associates, Inc. Survey By: KS Associates, Inc. Horizontal Order: First    Method: GPS Longitude: 81-59-57.227822 East (x) Meters: 641824.841 East (x) USFeet: 2105720.334 Combined Scale Factor: 0.99993995 Vertical Order: Second Elevation (z) USFeet: 631.651
--	---





## Lorain County Auditor's Office Geodetic Survey Marker

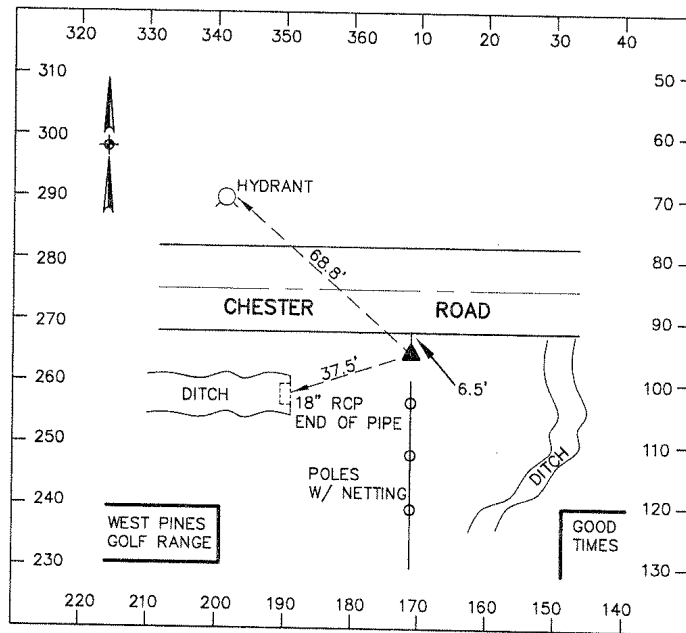
Station Name: 2002-16 USGS Quad: Avon Type of Mark: Bronze Disk Stamping on Mark: 2002-16 Horizontal Datum: NAD83(1995) Latitude: 41-26-57.648954 North (y) Meters: 198054.446 North (y) USFeet: 649783.630 Convergence: 0-17-18.67 State Plane Coordinate System Zone: Ohio North (3401) Vertical Datum: NAVD88 Elevation (z) Meters: 192.647 Location: To reach the monument, commence at the intersection of Chester Road and Jaycox Road in Avon and travel North on Jaycox Road 0.5 miles more or less to the station on the left. The station is a bronze disk in concrete.	Alias: None Township: Avon Set By: KS Associates, Inc. Survey By: KS Associates, Inc. Horizontal Order: First    Method: GPS Longitude: 82-03-38.957081 East (x) Meters: 636696.712 East (x) USFeet: 2088895.798 Combined Scale Factor: 0.99993648 Vertical Order: Second Elevation (z) USFeet: 632.044
---	---



## Lorain County Auditor's Office Geodetic Survey Marker

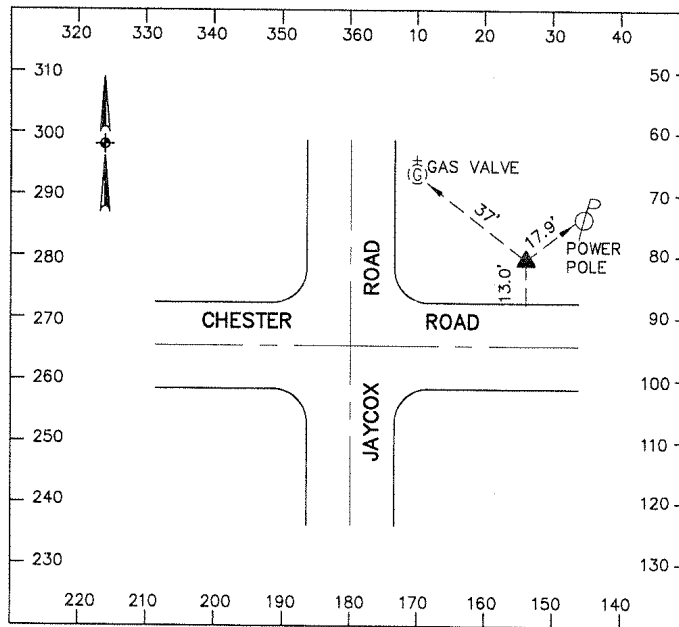
Station Name: 2002-17 USGS Quad: Avon Type of Mark: Bronze Disk Stamping on Mark: 2002-17 Horizontal Datum: NAD83(1995) Latitude: 41-26-39.653492 North (y) Meters: 197506.297 North (y) USFeet: 647985.242 Convergence: 0-17-57.26 State Plane Coordinate System Zone: Ohio North (3401) Vertical Datum: NAVD88 Elevation (z) Meters: 204.927	Alias: None Township: Avon Set By: KS Associates, Inc. Survey By: KS Associates, Inc. Horizontal Order: First    Method: GPS Longitude: 82-02-40.210843 East (x) Meters: 638063.126 East (x) USFeet: 2093378.773 Combined Scale Factor: 0.99993397 Vertical Order: Second Elevation (z) USFeet: 672.333
---	---

Location: To reach the monument, commence at the intersection of Chester Road and Jaycox Road in Avon and travel East on Chester Road 0.3 miles more or less to the station on the right. The station is a bronze disk in concrete.



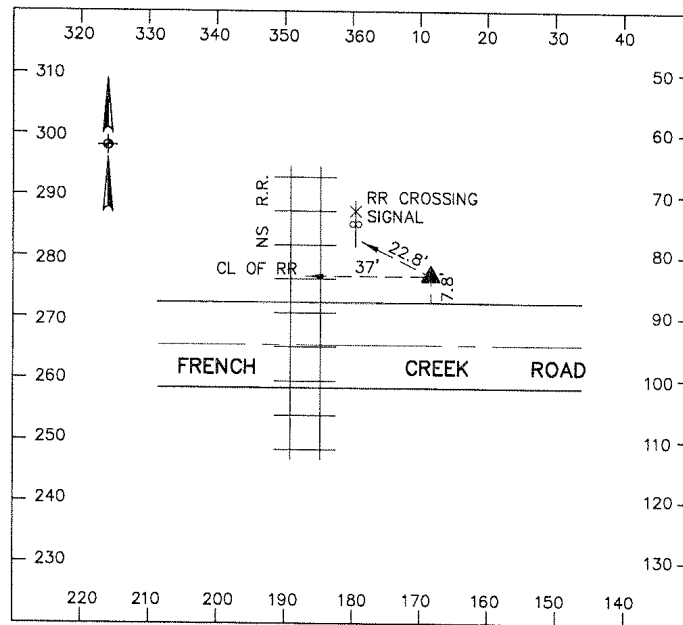
## Lorain County Auditor's Office Geodetic Survey Marker

Station Name: 2002-18 USGS Quad: North Olmsted Type of Mark: Bronze Disk Stamping on Mark: 2002-18 Horizontal Datum: NAD83(1995) Latitude: 41-28-03.318937 North (y) Meters: 200107.978 North (y) USFeet: 656520.924 Convergence: 0-19-44.03 State Plane Coordinate System Zone: Ohio North (3401) Vertical Datum: NAVD88 Elevation (z) Meters: 194.440 Location: The station is located at the Northeast corner of the intersection of Chester Road and Jaycox Road in Avon. The station is a bronze disk in concrete.	Alias: None Township: Avon Set By: KS Associates, Inc. Survey By: KS Associates, Inc. Horizontal Order: First    Method: GPS Longitude: 81-59-57.687678 East (x) Meters: 641820.792 East (x) USFeet: 2105707.048 Combined Scale Factor: 0.99993836 Vertical Order: Second Elevation (z) USFeet: 637.924
---	---



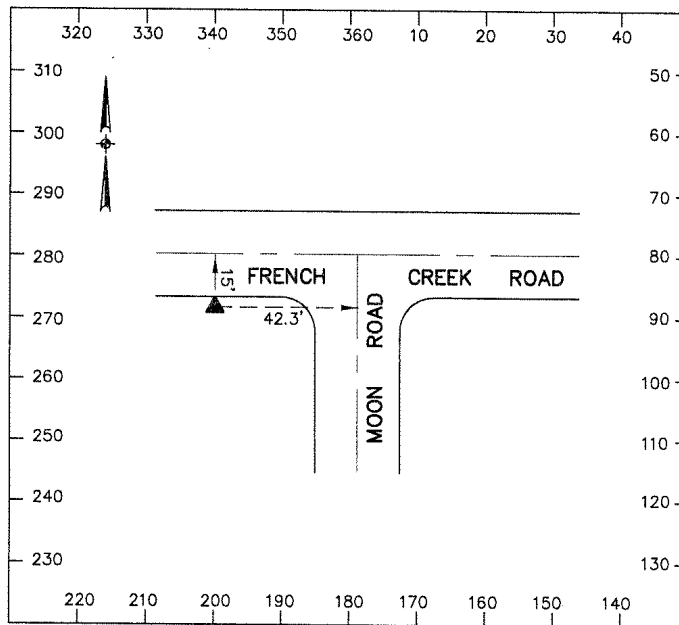
## Lorain County Auditor's Office Geodetic Survey Marker

Station Name: 2002-19 USGS Quad: Avon Type of Mark: Bronze Disk Stamping on Mark: 2002-19 Horizontal Datum: NAD83(1995) Latitude: 41-26-57.951043 North (y) Meters: 198061.080 North (y) USFeet: 649805.393 Convergence: 0-17-03.46 State Plane Coordinate System Zone: Ohio North (3401) Vertical Datum: NAVD88 Elevation (z) Meters: 192.783 Location: To reach the monument, commence at the intersection of Moon Road and Sheffield French Creek Road in Avon and travel West on Sheffield French Creek Road 0.3 miles more or less to the station on the right. The station is a bronze disk in concrete.	Alias: None Township: Avon Set By: KS Associates, Inc. Survey By: KS Associates, Inc. Horizontal Order: First    Method: GPS Longitude: 82-04-02.106434 East (x) Meters: 636159.364 East (x) USFeet: 2087132.846 Combined Scale Factor: 0.99993647 Vertical Order: Second Elevation (z) USFeet: 632.489
---	---



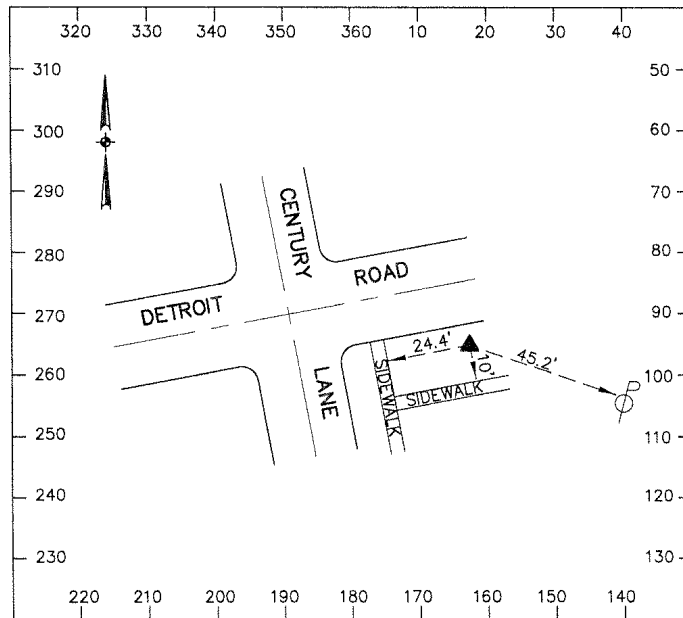
## Lorain County Auditor's Office Geodetic Survey Marker

Station Name: 2002-20 USGS Quad: Avon Type of Mark: Bronze Disk Stamping on Mark: 2002-20 Horizontal Datum: NAD83(1995) Latitude: 41-26-57.648954 North (y) Meters: 198054.446 North (y) USFeet: 649783.630 Convergence: 0-17-18.67 State Plane Coordinate System Zone: Ohio North (3401) Vertical Datum: NAVD88 Elevation (z) Meters: 192.647 Location: The station is located at the Southwest corner of the intersection of Moon Road and Sheffield French Creek Road in Avon. The station is a bronze disk in concrete.	Alias: None Township: Avon Set By: KS Associates, Inc. Survey By: KS Associates, Inc. Horizontal Order: First    Method: GPS Longitude: 82-03-38.957081 East (x) Meters: 636696.712 East (x) USFeet: 2088895.798 Combined Scale Factor: 0.99993648 Vertical Order: Second Elevation (z) USFeet: 632.044
---	---



## Lorain County Auditor's Office Geodetic Survey Marker

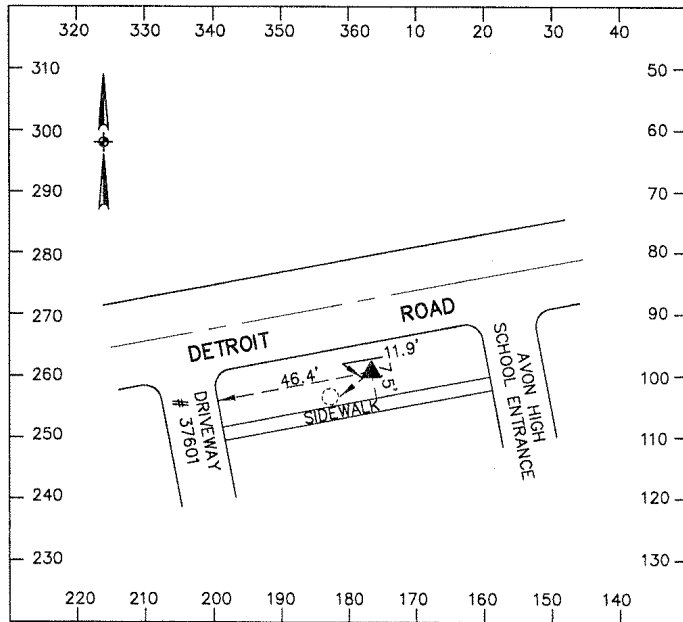
Station Name: 2002-21 USGS Quad: Avon Type of Mark: Bronze Disk Stamping on Mark: 2002-21 Horizontal Datum: NAD83(1995) Latitude: 41-26-39.653492 North (y) Meters: 197506.297 North (y) USFeet: 647985.242 Convergence: 0-17-57.26 State Plane Coordinate System Zone: Ohio North (3401) Vertical Datum: NAVD88 Elevation (z) Meters: 204.927 Location: To reach the monument, commence at the intersection of Detroit Road and Sheffield French Creek Road in Avon and travel Southwest on Sheffield French Creek Road 0.5 miles more or less to the station on the left. The station is a bronze disk in concrete.	Alias: None Township: Avon Set By: KS Associates, Inc. Survey By: KS Associates, Inc. Horizontal Order: First    Method: GPS Longitude: 82-02-40.210843 East (x) Meters: 638063.126 East (x) USFeet: 2093378.773 Combined Scale Factor: 0.99993397 Vertical Order: Second Elevation (z) USFeet: 672.333
---	---



## Lorain County Auditor's Office Geodetic Survey Marker

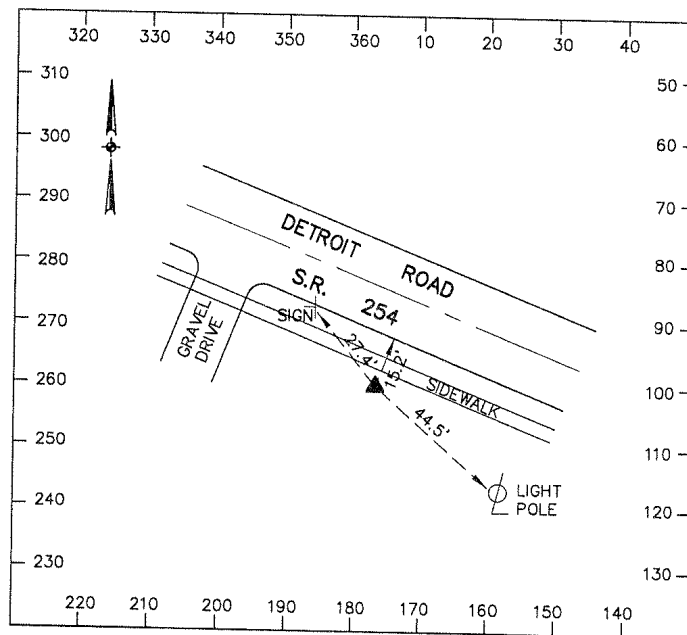
Station Name: 2002-22	Alias: None
USGS Quad: Avon	Township: Avon
Type of Mark: Bronze Disk	Set By: KS Associates, Inc.
Stamping on Mark: 2002-22	Survey By: KS Associates, Inc.
Horizontal Datum: NAD83(1995)	Horizontal Order: First    Method: GPS
Latitude: 41-26-50.142013	Longitude: 82-02-26.010421
North (y) Meters: 197831.587	East (x) Meters: 638391.042
North (y) USFeet: 649052.464	East (x) USFeet: 2094454.609
Convergence: 0-18-06.59	Combined Scale Factor: 0.99993432
State Plane Coordinate System Zone: Ohio North (3401)	
Vertical Datum: NAVD88	Vertical Order: Second
Elevation (z) Meters: 204.870	Elevation (z) USFeet: 672.144

Location: To reach the monument, commence at the intersection of Detroit Road and Sheffield French Creek Road in Avon and travel Southwest on Sheffield French Creek Road 0.2 miles more or less to the station on the left. The station is a bronze disk in concrete.



## Lorain County Auditor's Office Geodetic Survey Marker

Station Name: 2002-23 USGS Quad: Avon Type of Mark: Bronze Disk Stamping on Mark: 2002-23 Horizontal Datum: NAD83(1995) Latitude: 41-27-26.076544 North (y) Meters: 198952.909 North (y) USFeet: 652731.337 Convergence: 0-19-13.19 State Plane Coordinate System Zone: Ohio North (3401) Vertical Datum: NAVD88 Elevation (z) Meters: 211.279 Location: To reach the monument, commence at the intersection of Detroit Road and Center Road in Avon and travel Southeast on Detroit Road 0.4 miles more or less to the station on the right. The station is a bronze disk in concrete.	Alias: None Township: Avon Set By: KS Associates, Inc. Survey By: KS Associates, Inc. Horizontal Order: First    Method: GPS Longitude: 82-00-44.633264 East (x) Meters: 640737.903 East (x) USFeet: 2102154.270 Combined Scale Factor: 0.99993448 Vertical Order: Second Elevation (z) USFeet: 693.171
---	---

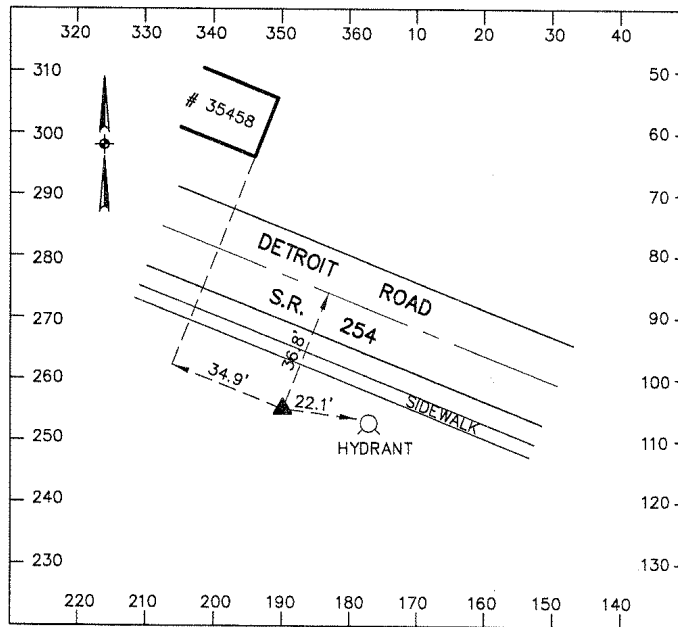




## Lorain County Auditor's Office Geodetic Survey Marker

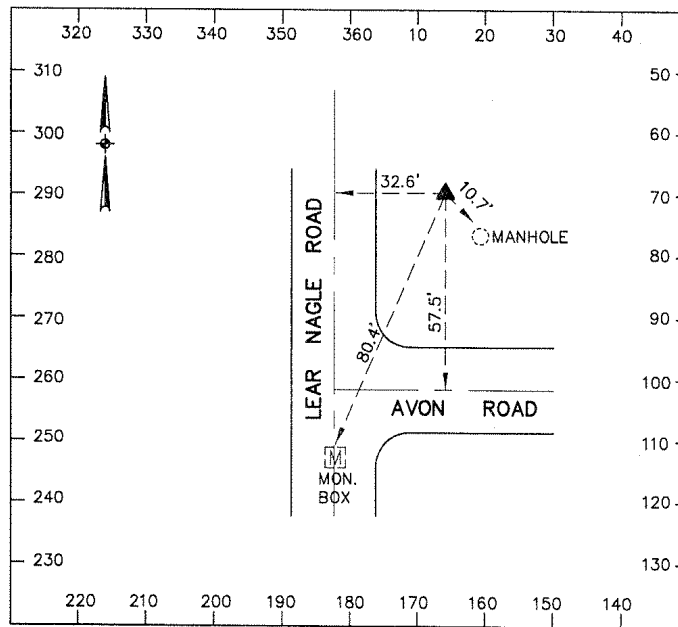
Station Name: 2002-24	Alias: None
USGS Quad: Avon	Township: Avon
Type of Mark: Bronze Disk	Set By: KS Associates, Inc.
Stamping on Mark: 2002-24	Survey By: KS Associates, Inc.
Horizontal Datum: NAD83(1995)	Horizontal Order: First    Method: GPS
Latitude: 41-27-21.652236	Longitude: 82-00-31.321537
North (y) Meters: 198818.157	East (x) Meters: 641047.602
North (y) USFeet: 652289.238	East (x) USFeet: 2103170.342
Convergence: 0-19-21.93	Combined Scale Factor: 0.99993510
State Plane Coordinate System Zone: Ohio North (3401)	
Vertical Datum: NAVD88	Vertical Order: Second
Elevation (z) Meters: 206.400	Elevation (z) USFeet: 677.164

Location: To reach the monument, commence at the intersection of Detroit Road and Center Road in Avon and travel Southeast on Detroit Road 0.6 miles more or less to the station on the right. The station is a bronze disk in concrete.



## Lorain County Auditor's Office Geodetic Survey Marker

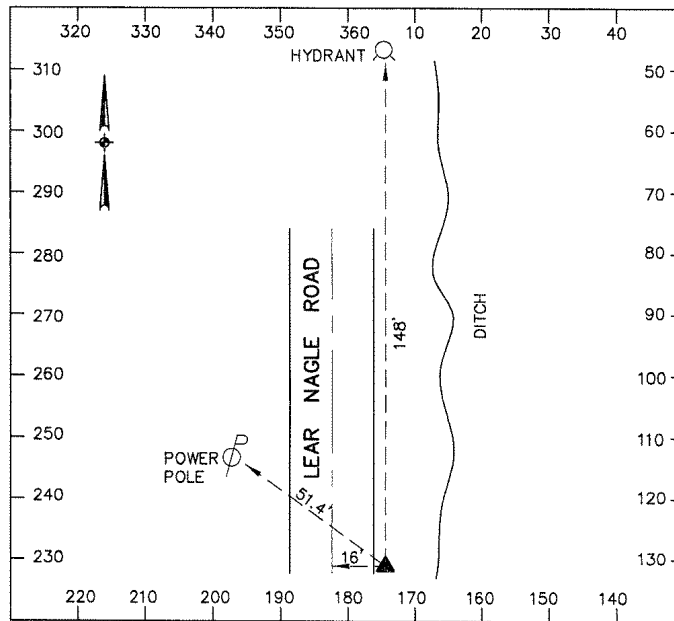
Station Name: 2002-25 USGS Quad: North Olmsted Type of Mark: Bronze Disk Stamping on Mark: 2002-25 Horizontal Datum: NAD83(1995) Latitude: 41-27-46.565436 North (y) Meters: 199596.252 North (y) USFeet: 654842.036 Convergence: 0-20-08.95 State Plane Coordinate System Zone: Ohio North (3401) Vertical Datum: NAVD88 Elevation (z) Meters: 196.428	Alias: None Township: Avon Set By: KS Associates, Inc. Survey By: KS Associates, Inc. Horizontal Order: First    Method: GPS Longitude: 81-59-19.760698 East (x) Meters: 642703.868 East (x) USFeet: 2108604.272 Combined Scale Factor: 0.99993748 Vertical Order: Second Elevation (z) USFeet: 644.446 Location: To reach the monument, commence at the intersection of Detroit Road and Lear Nagle Road in Avon and travel North on Lear Nagle Road 0.7 miles more or less to the station on the right at the Northeast corner of the intersection of Lear Nagle Road and Avon Road. The station is a bronze disk in concrete.
--	---



## Lorain County Auditor's Office Geodetic Survey Marker

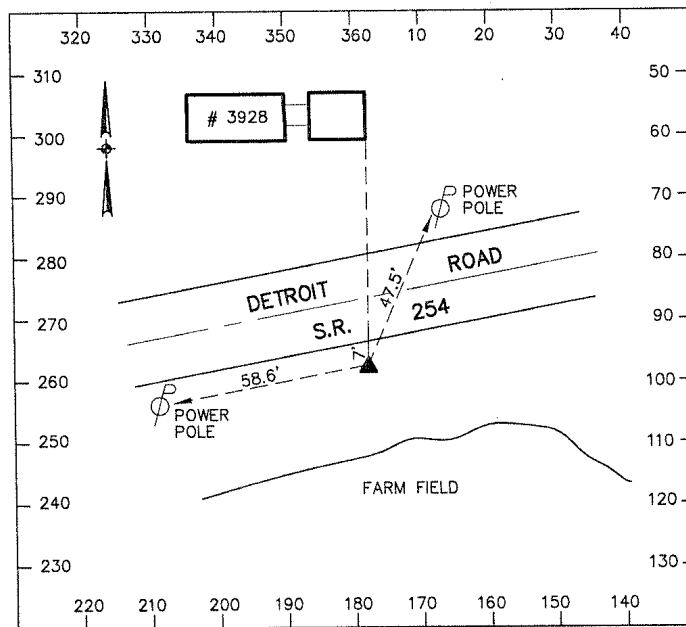
Station Name: 2002-26	Alias: None
USGS Quad: North Olmsted	Township: Avon
Type of Mark: Bronze Disk	Set By: KS Associates, Inc.
Stamping on Mark: 2002-26	Survey By: KS Associates, Inc.
Horizontal Datum: NAD83(1995)	Horizontal Order: First      Method: GPS
Latitude: 41-27-35.811016	Longitude: 81-59-20.228698
North (y) Meters: 199264.424	East (x) Meters: 642694.952
North (y) USFeet: 653753.364	East (x) USFeet: 2108575.020
Convergence: 0-20-08.64	Combined Scale Factor: 0.99993718
State Plane Coordinate System Zone: Ohio North (3401)	
Vertical Datum: NAVD88	Vertical Order: Second
Elevation (z) Meters: 196.080	Elevation (z) USFeet: 643.306

Location: To reach the monument, commence at the intersection of Detroit Road and Lear Nagle Road in Avon and travel North on Lear Nagle Road 0.5 miles more or less to the station on the right. The station is a bronze disk in concrete.



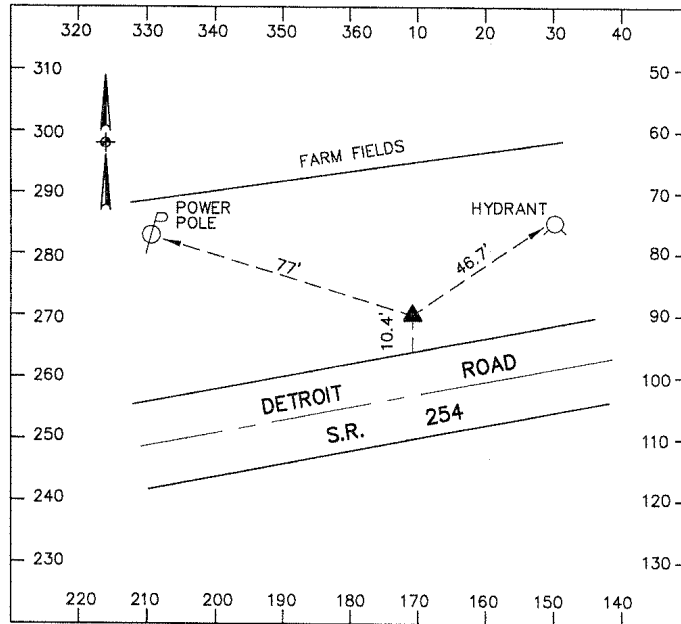
## Lorain County Auditor's Office Geodetic Survey Marker

Station Name: 2002-27 USGS Quad: Avon Type of Mark: Bronze Disk Stamping on Mark: 2002-27 Horizontal Datum: NAD83(1995) Latitude: 41-26-00.010808 North (y) Meters: 196276.115 North (y) USFeet: 643949.220 Convergence: 0-17-17.27 State Plane Coordinate System Zone: Ohio North (3401) Vertical Datum: NAVD88 Elevation (z) Meters: 205.111 Location: To reach the monument, commence at the intersection of Detroit Road and Case Road in Avon and travel Northeast on Detroit Road 0.1 miles more or less to the station on the right. The station is a bronze disk in concrete.	Alias: None Township: Avon Set By: KS Associates, Inc. Survey By: KS Associates, Inc. Horizontal Order: First    Method: GPS Longitude: 82-03-41.084666 East (x) Meters: 636656.272 East (x) USFeet: 2088763.121 Combined Scale Factor: 0.99993270 Vertical Order: Second Elevation (z) USFeet: 672.936
---	---



## Lorain County Auditor's Office Geodetic Survey Marker

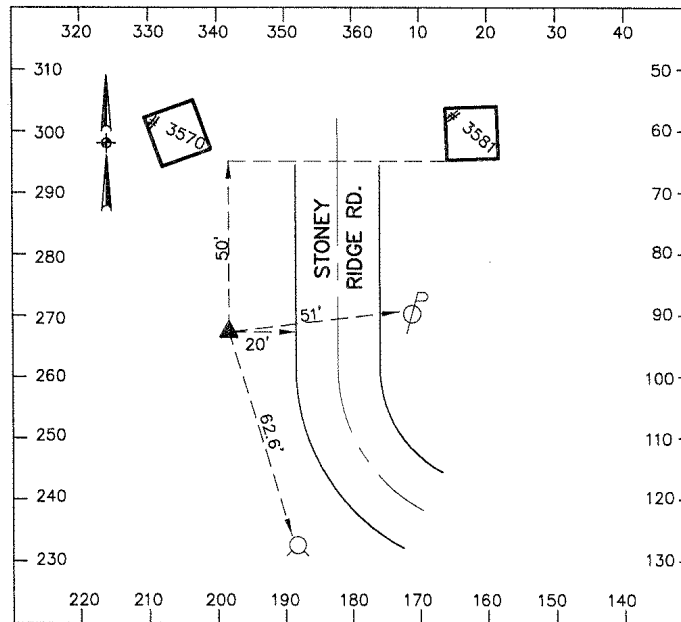
Station Name: 2002-28 USGS Quad: Avon Type of Mark: Bronze Disk Stamping on Mark: 2002-28 Horizontal Datum: NAD83(1995) Latitude: 41-25-49.919643 North (y) Meters: 195962.474 North (y) USFeet: 642920.217 Convergence: 0-17-04.03 State Plane Coordinate System Zone: Ohio North (3401) Vertical Datum: NAVD88 Elevation (z) Meters: 205.331 Location: To reach the monument, commence at the intersection of Detroit Road and Case Road in Avon and travel Southwest on Detroit Road 0.3 miles more or less to the station on the right. The station is a bronze disk in concrete.	Alias: None Township: Avon Set By: KS Associates, Inc. Survey By: KS Associates, Inc. Horizontal Order: First    Method: GPS Longitude: 82-04-01.243519 East (x) Meters: 636189.812 East (x) USFeet: 2087232.740 Combined Scale Factor: 0.99993235 Vertical Order: Second Elevation (z) USFeet: 673.657
---	---



## Lorain County Auditor's Office Geodetic Survey Marker

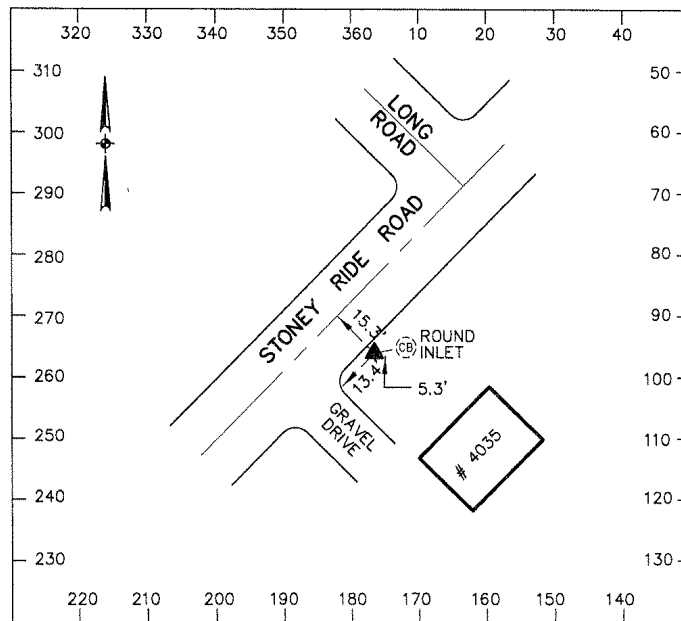
Station Name: 2002-29 USGS Quad: Avon Type of Mark: Bronze Disk Stamping on Mark: 2002-29 Horizontal Datum: NAD83(1995) Latitude: 41-26-15.086758 North (y) Meters: 196752.594 North (y) USFeet: 645512.468 Convergence: 0-18-19.55 State Plane Coordinate System Zone: Ohio North (3401) Vertical Datum: NAVD88 Elevation (z) Meters: 211.606	Alias: None Township: Avon Set By: KS Associates, Inc. Survey By: KS Associates, Inc. Horizontal Order: First    Method: GPS Longitude: 82-02-06.274277 East (x) Meters: 638854.901 East (x) USFeet: 2095976.456 Combined Scale Factor: 0.99993214 Vertical Order: Second Elevation (z) USFeet: 694.244
---	---

Location: To reach the monument, commence at the intersection of Long Road and Stoney Ridge Road in Avon and travel North on Stoney Ridge Road 0.5 miles more or less to the station on the left. The station is a bronze disk in concrete.



## Lorain County Auditor's Office Geodetic Survey Marker

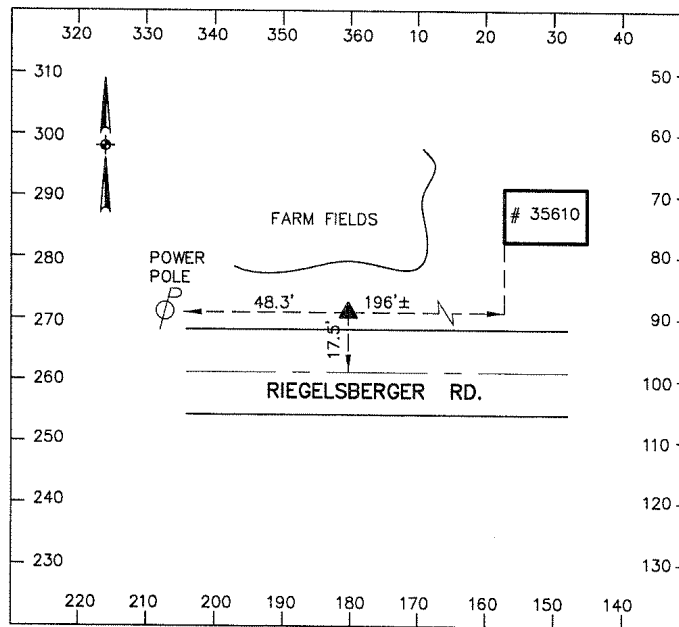
Station Name: 2002-30 USGS Quad: Avon Type of Mark: Bronze Disk Stamping on Mark: 2002-30 Horizontal Datum: NAD83(1995) Latitude: 41-25-48.181487 North (y) Meters: 195921.343 North (y) USFeet: 642785.273 Convergence: 0-18-12.89 State Plane Coordinate System Zone: Ohio North (3401) Vertical Datum: NAVD88 Elevation (z) Meters: 216.238 Location: The station is located at the Southeast corner of the intersection of Long Road and Stoney Ridge Road in Avon. The station is a bronze disk in concrete.	Alias: None Township: Avon Set By: KS Associates, Inc. Survey By: KS Associates, Inc. Horizontal Order: First    Method: GPS Longitude: 82-02-16.414825 East (x) Meters: 638623.892 East (x) USFeet: 2095218.554 Combined Scale Factor: 0.99993058 Vertical Order: Second Elevation (z) USFeet: 709.442
---	---



## Lorain County Auditor's Office Geodetic Survey Marker

Station Name: 2002-31 USGS Quad: Avon Type of Mark: Bronze Disk Stamping on Mark: 2002-31 Horizontal Datum: NAD83(1995) Latitude: 41-26-06.349512 North (y) Meters: 196492.779 North (y) USFeet: 644660.060 Convergence: 0-19-10.00 State Plane Coordinate System Zone: Ohio North (3401) Vertical Datum: NAVD88 Elevation (z) Meters: 210.549	Alias: None Township: Avon Set By: KS Associates, Inc. Survey By: KS Associates, Inc. Horizontal Order: First    Method: GPS Longitude: 82-00-49.489865 East (x) Meters: 640638.907 East (x) USFeet: 2101829.480 Combined Scale Factor: 0.99993203 Vertical Order: Second Elevation (z) USFeet: 690.777
---	---

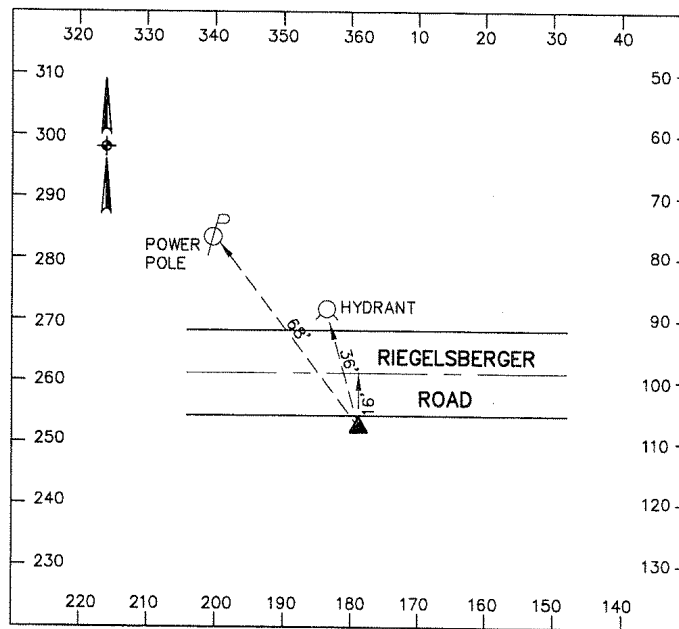
Location: To reach the monument, commence at the intersection of Center Road and Riegelsberger Road in Avon and travel East on Riegelsberger Road 0.3 miles more or less to the station on the left. The station is a bronze disk in concrete.





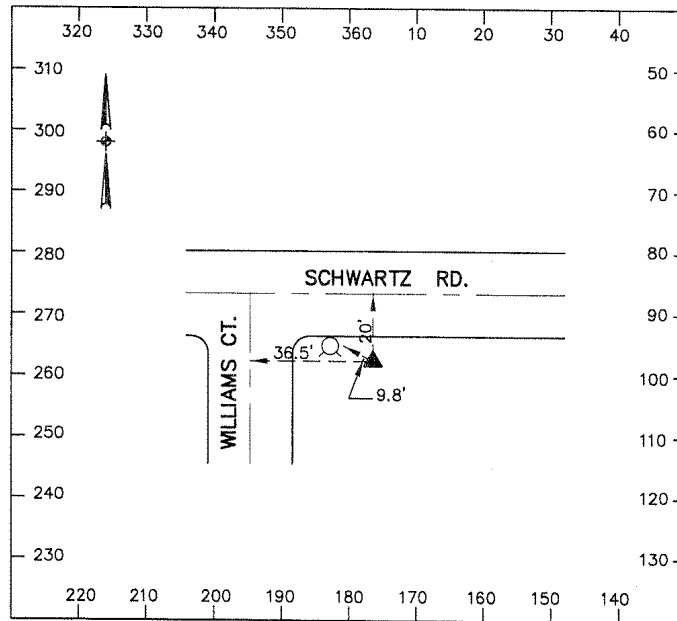
## Lorain County Auditor's Office Geodetic Survey Marker

Station Name: 2002-32 USGS Quad: Avon Type of Mark: Bronze Disk Stamping on Mark: 2002-32 Horizontal Datum: NAD83(1995) Latitude: 41-26-06.098168 North (y) Meters: 196483.267 North (y) USFeet: 644628.852 Convergence: 0-19-01.04 State Plane Coordinate System Zone: Ohio North (3401) Vertical Datum: NAVD88 Elevation (z) Meters: 211.765 Location: To reach the monument, commence at the intersection of Center Road and Riegelsberger Road in Avon and travel East on Riegelsberger Road 0.1 miles more or less to the station on the right. The station is a bronze disk in concrete.	Alias: None Township: Avon Set By: KS Associates, Inc. Survey By: KS Associates, Inc. Horizontal Order: First    Method: GPS Longitude: 82-01-03.129931 East (x) Meters: 640322.292 East (x) USFeet: 2100790.721 Combined Scale Factor: 0.99993184 Vertical Order: Second Elevation (z) USFeet: 694.767
--	---



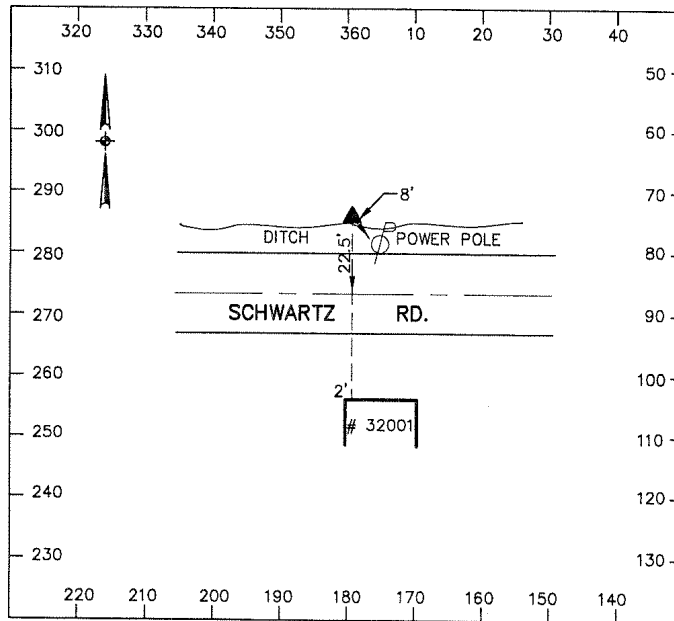
## Lorain County Auditor's Office Geodetic Survey Marker

Station Name: 2002-33 USGS Quad: North Olmsted Type of Mark: Bronze Disk Stamping on Mark: 2002-33 Horizontal Datum: NAD83(1995) Latitude: 41-26-31.161091 North (y) Meters: 197275.199 North (y) USFeet: 647227.049 Convergence: 0-20-33.32 State Plane Coordinate System Zone: Ohio North (3401) Vertical Datum: NAVD88 Elevation (z) Meters: 211.707 Location: To reach the monument, commence at the intersection of Schwartz Road and Lear Nagle Road in Avon and travel East on Schwartz Road 0.6 miles more or less to the station on the right at the Southeast corner of the intersection of Schwartz Road and Williams Court. The station is a bronze disk in concrete.	Alias: None Township: Avon Set By: KS Associates, Inc. Survey By: KS Associates, Inc. Horizontal Order: First    Method: GPS Longitude: 81-58-42.664556 East (x) Meters: 643578.605 East (x) USFeet: 2111474.139 Combined Scale Factor: 0.99993263 Vertical Order: Second Elevation (z) USFeet: 694.576
---	---



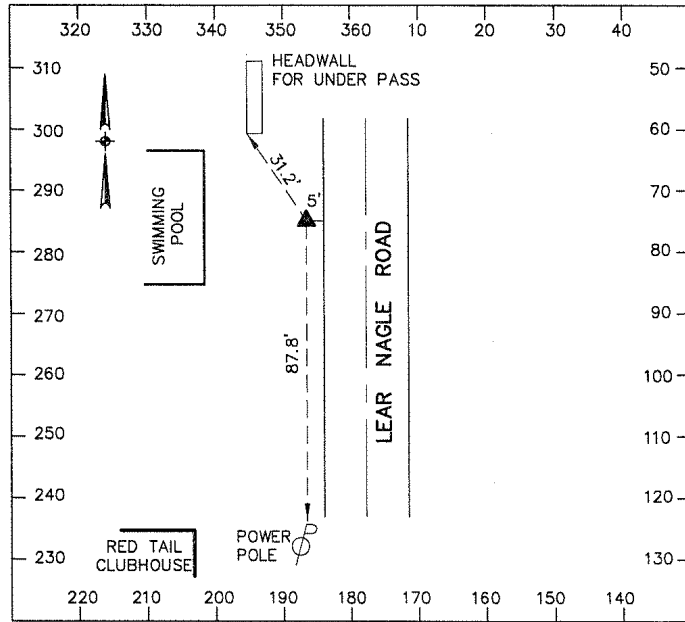
## Lorain County Auditor's Office Geodetic Survey Marker

Station Name: 2002-34 USGS Quad: North Olmsted Type of Mark: Bronze Disk Stamping on Mark: 2002-34 Horizontal Datum: NAD83(1995) Latitude: 41-26-31.457036 North (y) Meters: 197286.463 North (y) USFeet: 647264.004 Convergence: 0-20-43.38 State Plane Coordinate System Zone: Ohio North (3401) Vertical Datum: NAVD88 Elevation (z) Meters: 212.031 Location: To reach the monument, commence at the intersection of Schwartz Road and Lear Nagle Road in Avon and travel East on Schwartz Road 0.8 miles more or less to the station on the left. The station is a bronze disk in concrete.	Alias: None Township: Avon Set By: KS Associates, Inc. Survey By: KS Associates, Inc. Horizontal Order: First    Method: GPS Longitude: 81-58-27.348926 East (x) Meters: 643934.067 East (x) USFeet: 2112640.352 Combined Scale Factor: 0.99993258 Vertical Order: Second Elevation (z) USFeet: 695.637
--	---



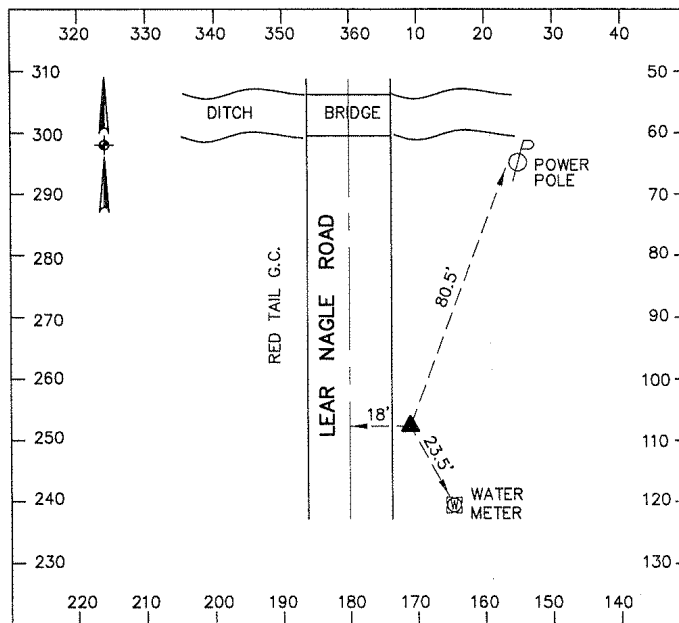
## Lorain County Auditor's Office Geodetic Survey Marker

Station Name: 2002-35 USGS Quad: North Olmsted Type of Mark: Bronze Disk Stamping on Mark: 2002-35 Horizontal Datum: NAD83(1995) Latitude: 41-25-30.787206 North (y) Meters: 195407.241 North (y) USFeet: 641098.591 Convergence: 0-20-07.04 State Plane Coordinate System Zone: Ohio North (3401) Vertical Datum: NAVD88 Elevation (z) Meters: 213.037 Location: To reach the monument, commence at the intersection of Mills Road and Lear Nagle Road in Avon and travel North on Lear Nagle Road 0.4 miles more or less to the station on the left. The station is a bronze disk in concrete.	Alias: None Township: Avon Set By: KS Associates, Inc. Survey By: KS Associates, Inc. Horizontal Order: First    Method: GPS Longitude: 81-59-22.659846 East (x) Meters: 642661.104 East (x) USFeet: 2108463.970 Combined Scale Factor: 0.99993055 Vertical Order: Second Elevation (z) USFeet: 698.940
--	---



## Lorain County Auditor's Office Geodetic Survey Marker

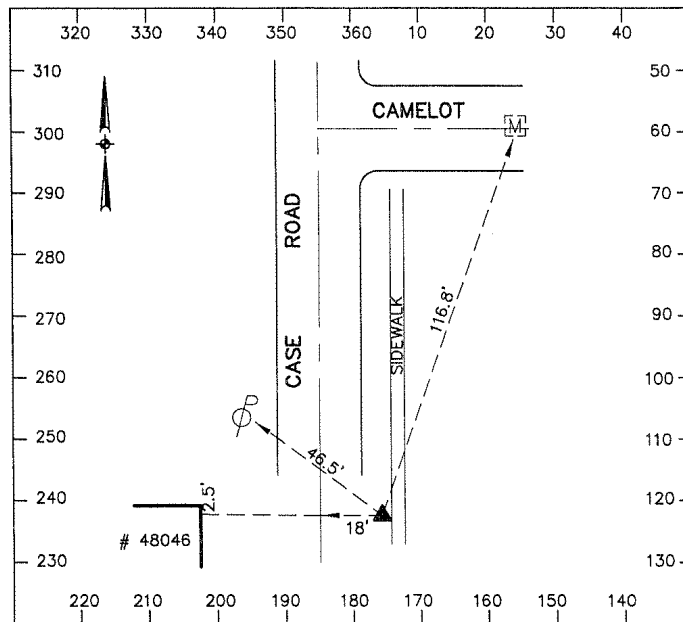
Station Name: 2002-36 USGS Quad: North Olmsted Type of Mark: Bronze Disk Stamping on Mark: 2002-36 Horizontal Datum: NAD83(1995) Latitude: 41-25-15.643160 North (y) Meters: 194940.109 North (y) USFeet: 639566.007 Convergence: 0-20-07.25 State Plane Coordinate System Zone: Ohio North (3401) Vertical Datum: NAVD88 Elevation (z) Meters: 212.784 Location: To reach the monument, commence at the intersection of Mills Road and Lear Nagle Road in Avon and travel North on Lear Nagle Road 0.2 miles more or less to the station on the right. The station is a bronze disk in concrete.	Alias: None Township: Avon Set By: KS Associates, Inc. Survey By: KS Associates, Inc. Horizontal Order: First    Method: GPS Longitude: 81-59-22.346093 East (x) Meters: 642671.123 East (x) USFeet: 2108496.842 Combined Scale Factor: 0.99993013 Vertical Order: Second Elevation (z) USFeet: 698.110
---	---



## Lorain County Auditor's Office Geodetic Survey Marker

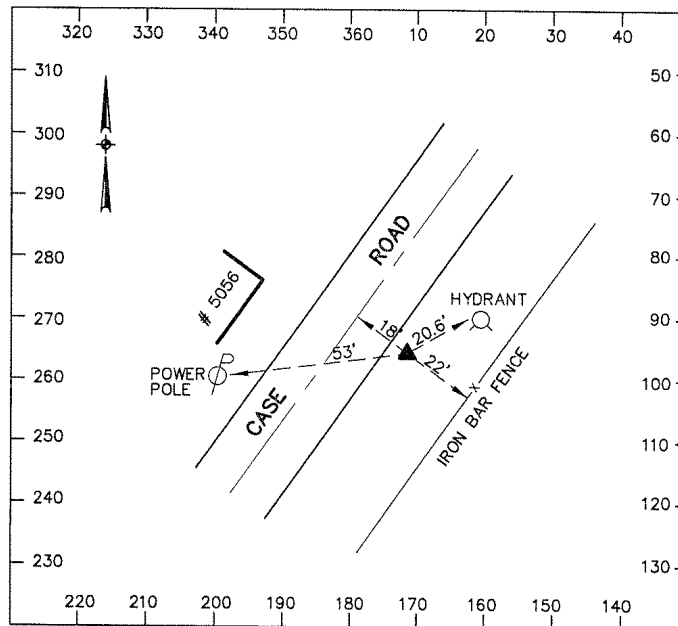
Station Name: 2002-37	Alias: None
USGS Quad: Avon	Township: Avon
Type of Mark: Bronze Disk	Set By: KS Associates, Inc.
Stamping on Mark: 2002-37	Survey By: KS Associates, Inc.
Horizontal Datum: NAD83(1995)	Horizontal Order: First    Method: GPS
Latitude: 41-25-10.020329	Longitude: 82-03-44.601834
North (y) Meters: 194733.552	East (x) Meters: 636582.356
North (y) USFeet: 638888.327	East (x) USFeet: 2088520.614
Convergence: 0-17-14.96	Combined Scale Factor: 0.99993041
State Plane Coordinate System Zone: Ohio North (3401)	
Vertical Datum: NAVD88	Vertical Order: Second
Elevation (z) Meters: 210.024	Elevation (z) USFeet: 689.052

Location: To reach the monument, commence at the intersection of Case Road and Detroit Road in Avon and travel South on Case Road 0.9 miles more or less to the station on the left. The station is a bronze disk in concrete.



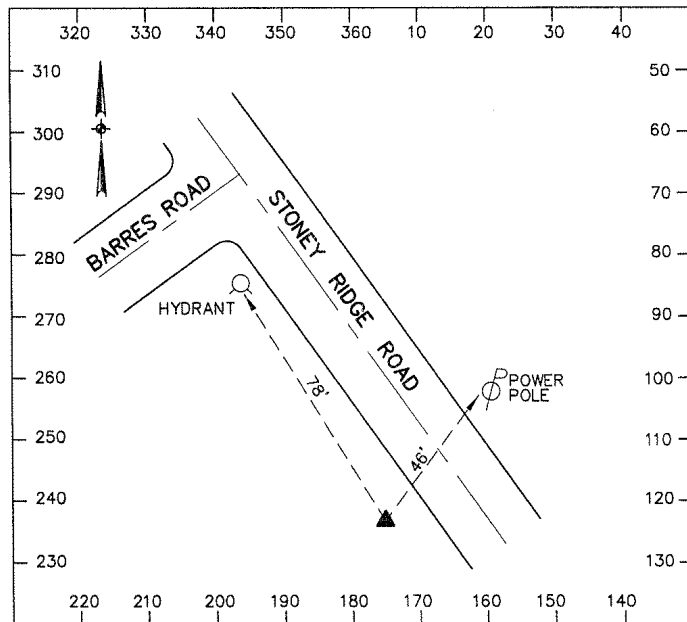
## Lorain County Auditor's Office Geodetic Survey Marker

Station Name: 2002-38 USGS Quad: Avon Type of Mark: Bronze Disk Stamping on Mark: 2002-38 Horizontal Datum: NAD83(1995) Latitude: 41-24-57.076068 North (y) Meters: 194333.996 North (y) USFeet: 637577.452 Convergence: 0-17-13.60 State Plane Coordinate System Zone: Ohio North (3401) Vertical Datum: NAVD88 Elevation (z) Meters: 211.389 Location: To reach the monument, commence at the intersection of Case Road and Barres Road in North Ridgeville and travel North on Case Road 0.5 miles more or less to the station on the right. The station is a bronze disk in concrete.	Alias: None Township: Ridgeville Set By: KS Associates, Inc. Survey By: KS Associates, Inc. Horizontal Order: First      Method: GPS Longitude: 82-03-46.662318 East (x) Meters: 636536.511 East (x) USFeet: 2088370.203 Combined Scale Factor: 0.99992981 Vertical Order: Second Elevation (z) USFeet: 693.531
---	---



## Lorain County Auditor's Office Geodetic Survey Marker

Station Name: 2002-39 USGS Quad: Avon Type of Mark: Bronze Disk Stamping on Mark: 2002-39 Horizontal Datum: NAD83(1995) Latitude: 41-24-28.684910 North (y) Meters: 193469.595 North (y) USFeet: 634741.496 Convergence: 0-18-16.24 State Plane Coordinate System Zone: Ohio North (3401) Vertical Datum: NAVD88 Elevation (z) Meters: 219.371 Location: The station is located at the Southwest corner of the intersection of Barres Road and Stoney Ridge Road in North Ridgeville. The station is a bronze disk in concrete.	Alias: None Township: Ridgeville Set By: KS Associates, Inc. Survey By: KS Associates, Inc. Horizontal Order: First      Method: GPS Longitude: 82-02-11.318932 East (x) Meters: 638755.238 East (x) USFeet: 2095649.476 Combined Scale Factor: 0.99992772 Vertical Order: Second Elevation (z) USFeet: 719.720
---	---

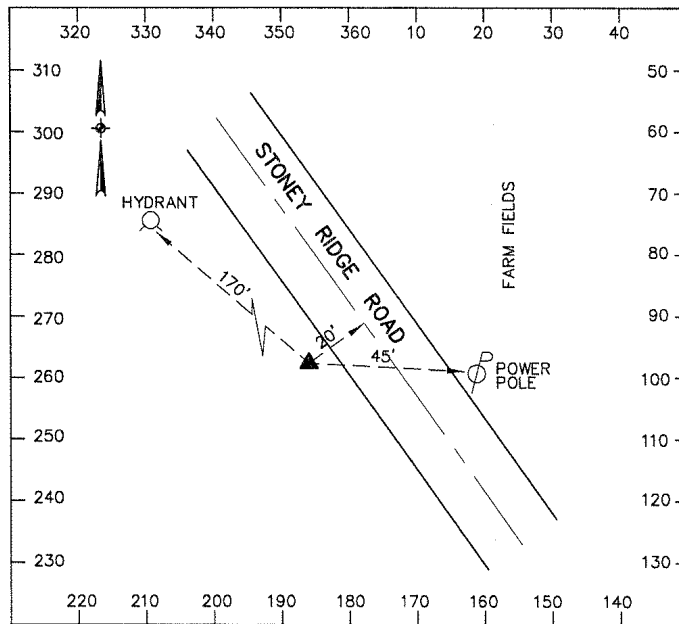




## Lorain County Auditor's Office Geodetic Survey Marker

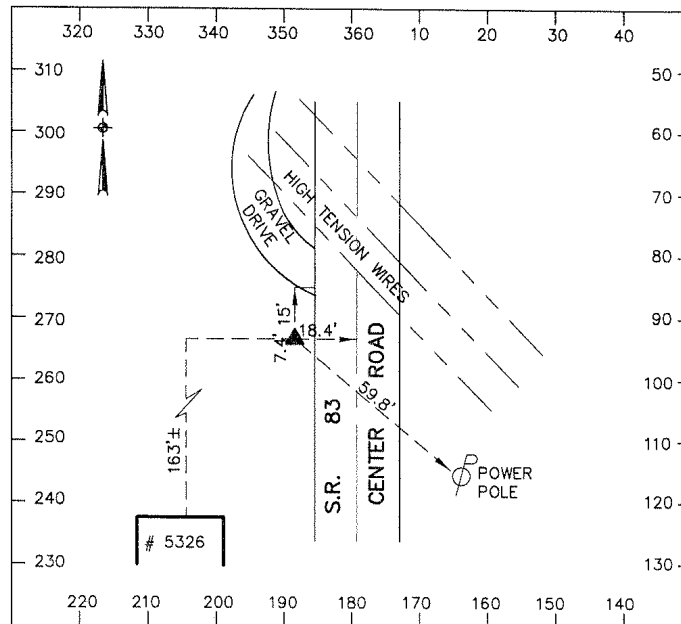
Station Name: 2002-40	Alias: None
USGS Quad: Avon	Township: Ridgeville
Type of Mark: Bronze Disk	Set By: KS Associates, Inc.
Stamping on Mark: 2002-40	Survey By: KS Associates, Inc.
Horizontal Datum: NAD83(1995)	Horizontal Order: First    Method: GPS
Latitude: 41-24-38.267204	Longitude: 82-02-21.784619
North (y) Meters: 193763.909	East (x) Meters: 638510.613
North (y) USFeet: 635707.091	East (x) USFeet: 2094846.901
Convergence: 0-18-09.37	Combined Scale Factor: 0.99992803
State Plane Coordinate System Zone: Ohio North (3401)	
Vertical Datum: NAVD88	Vertical Order: Second
Elevation (z) Meters: 219.174	Elevation (z) USFeet: 719.074

Location: To reach the monument, commence at the intersection of Stoney Ridge Road and Barres Road in North Ridgeville and travel Northwest on Stoney Ridge Road 0.2 miles more or less to the station on the left. The station is a bronze disk in concrete.



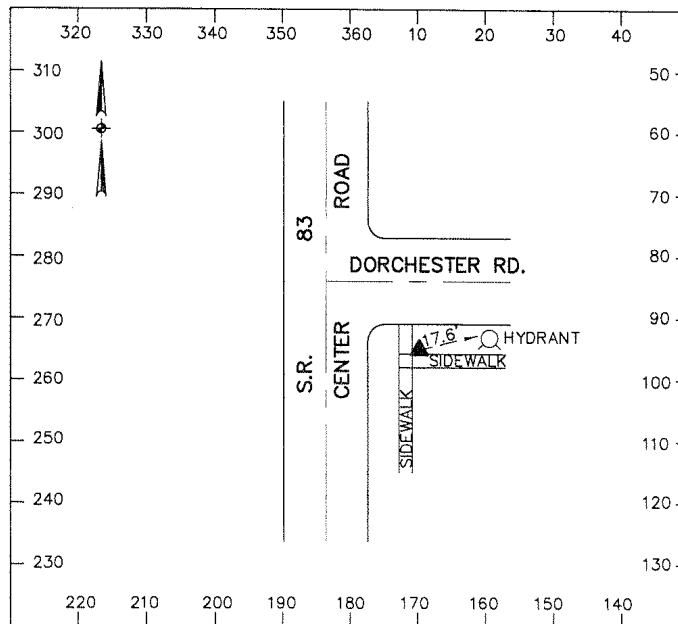
## Lorain County Auditor's Office Geodetic Survey Marker

Station Name: 2002-41 USGS Quad: Avon Type of Mark: Bronze Disk Stamping on Mark: 2002-41 Horizontal Datum: NAD83(1995) Latitude: 41-24-46.492167 North (y) Meters: 194026.951 North (y) USFeet: 636570.087 Convergence: 0-18-58.15 State Plane Coordinate System Zone: Ohio North (3401) Vertical Datum: NAVD88 Elevation (z) Meters: 213.913 Location: To reach the monument, commence at the intersection of Mills Road and Center Road in North Ridgeville and travel South on Center Road 0.4 miles more or less to the station on the right. The station is a bronze disk in concrete.	Alias: None Township: Ridgeville Set By: KS Associates, Inc. Survey By: KS Associates, Inc. Horizontal Order: First    Method: GPS Longitude: 82-01-07.526819 East (x) Meters: 640233.768 East (x) USFeet: 2100500.288 Combined Scale Factor: 0.99992909 Vertical Order: Second Elevation (z) USFeet: 701.814
--	---



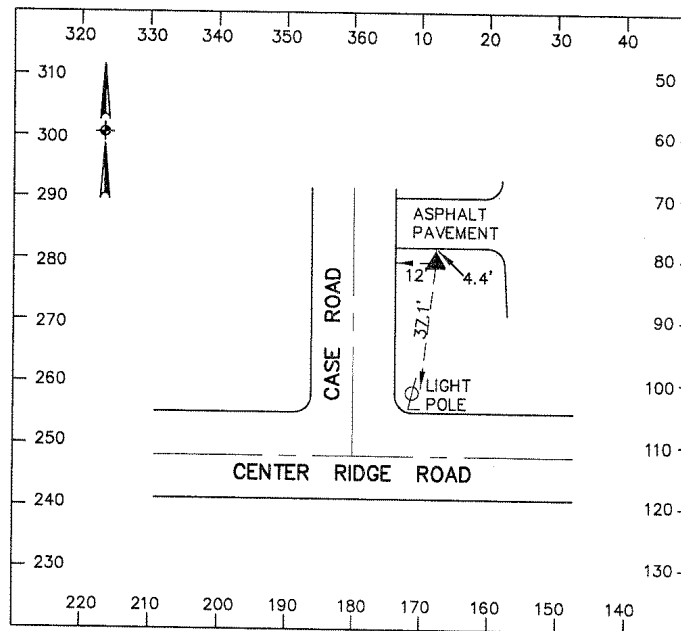
## Lorain County Auditor's Office Geodetic Survey Marker

Station Name: 2002-42 USGS Quad: Avon Type of Mark: Bronze Disk Stamping on Mark: 2002-42 Horizontal Datum: NAD83(1995) Latitude: 41-24-59.961710 North (y) Meters: 194442.556 North (y) USFeet: 637933.621 Convergence: 0-18-58.60 State Plane Coordinate System Zone: Ohio North (3401) Vertical Datum: NAVD88 Elevation (z) Meters: 212.477 Location: To reach the monument, commence at the intersection of Mills Road and Center Road in North Ridgeville and travel South on Center Road 0.1 miles more or less to the station on the left at the Southeast corner of the intersection of Center Road and Dorchester Avenue. The station is a bronze disk in concrete.	Alias: None Township: Ridgeville Set By: KS Associates, Inc. Survey By: KS Associates, Inc. Horizontal Order: First    Method: GPS Longitude: 82-01-06.846420 East (x) Meters: 640247.276 East (x) USFeet: 2100544.603 Combined Scale Factor: 0.99992972 Vertical Order: Second Elevation (z) USFeet: 697.101
--	---



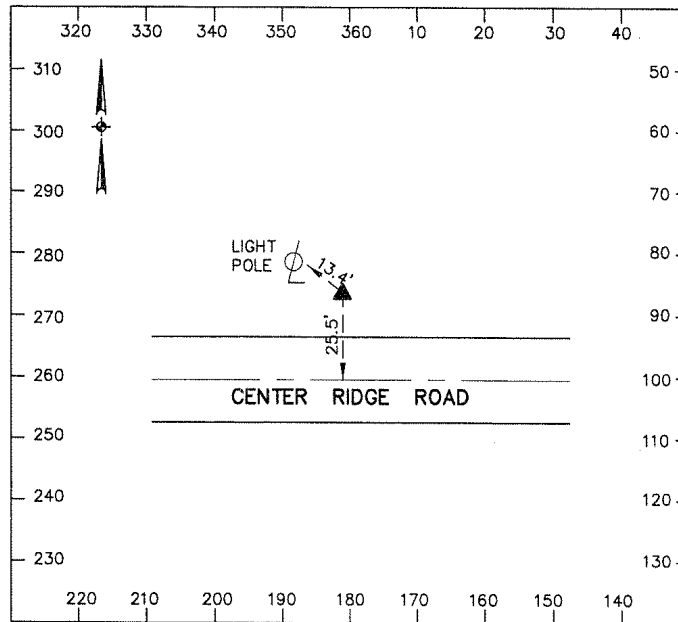
## Lorain County Auditor's Office Geodetic Survey Marker

Station Name: 2002-43 USGS Quad: Avon Type of Mark: Bronze Disk Stamping on Mark: 2002-43 Horizontal Datum: NAD83(1995) Latitude: 41-22-59.688545 North (y) Meters: 190714.607 North (y) USFeet: 625702.840 Convergence: 0-17-24.07 State Plane Coordinate System Zone: Ohio North (3401) Vertical Datum: NAVD88 Elevation (z) Meters: 221.002 Location: The station is located at the Northeast corner of the intersection of Case Road and Center Ridge Road in North Ridgeville. The station is a bronze disk in concrete.	Alias: None Township: Ridgeville Set By: KS Associates, Inc. Survey By: KS Associates, Inc. Horizontal Order: First    Method: GPS Longitude: 82-03-30.728743 East (x) Meters: 636924.852 East (x) USFeet: 2089644.286 Combined Scale Factor: 0.99992500 Vertical Order: Second Elevation (z) USFeet: 725.070
---	---



## Lorain County Auditor's Office Geodetic Survey Marker

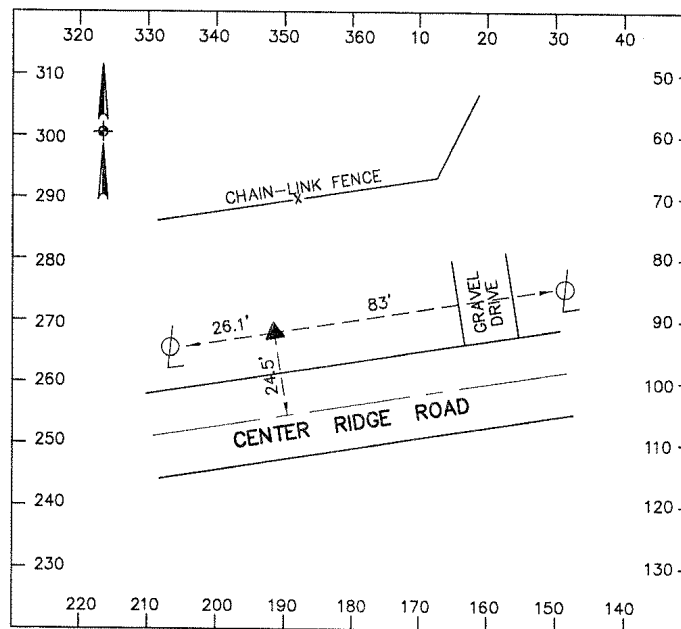
Station Name: 2002-44 USGS Quad: Avon Type of Mark: Bronze Disk Stamping on Mark: 2002-44 Horizontal Datum: NAD83(1995) Latitude: 41-23-00.761821 North (y) Meters: 190749.263 North (y) USFeet: 625816.542 Convergence: 0-17-32.68 State Plane Coordinate System Zone: Ohio North (3401) Vertical Datum: NAVD88 Elevation (z) Meters: 222.107 Location: To reach the monument, commence at the intersection of Case Road and Center Ridge Road in North Ridgeville and travel East on Center Ridge Road 0.2 miles more or less to the station on the left. The station is a bronze disk in concrete.	Alias: None Township: Ridgeville Set By: KS Associates, Inc. Survey By: KS Associates, Inc. Horizontal Order: First    Method: GPS Longitude: 82-03-17.625552 East (x) Meters: 637229.118 East (x) USFeet: 2090642.531 Combined Scale Factor: 0.99992485 Vertical Order: Second Elevation (z) USFeet: 728.696
---	---



## Lorain County Auditor's Office Geodetic Survey Marker

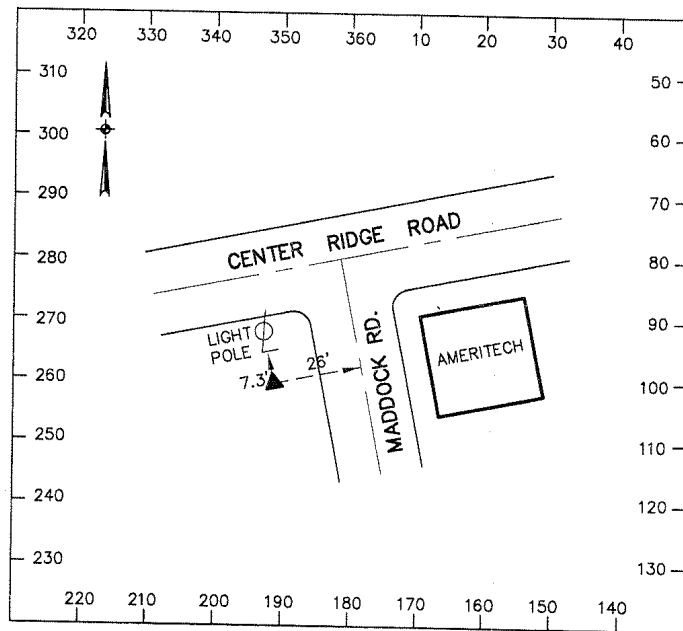
Station Name: 2002-45	Alias: None
USGS Quad: Avon	Township: Ridgeville
Type of Mark: Bronze Disk	Set By: KS Associates, Inc.
Stamping on Mark: 2002-45	Survey By: KS Associates, Inc.
Horizontal Datum: NAD83(1995)	Horizontal Order: First    Method: GPS
Latitude: 41-23-05.732027	Longitude: 82-02-19.699241
North (y) Meters: 190909.580	East (x) Meters: 638574.138
North (y) USFeet: 626342.513	East (x) USFeet: 2095055.319
Convergence: 0-18-10.74	Combined Scale Factor: 0.99992482
State Plane Coordinate System Zone: Ohio North (3401)	
Vertical Datum: NAVD88	Vertical Order: Second
Elevation (z) Meters: 223.175	Elevation (z) USFeet: 732.200

Location: To reach the monument, commence at the intersection of Race Road and Center Ridge Road in North Ridgeville and travel East on Center Ridge Road 0.3 miles more or less to the station on the left. The station is a bronze disk in concrete.



## Lorain County Auditor's Office Geodetic Survey Marker

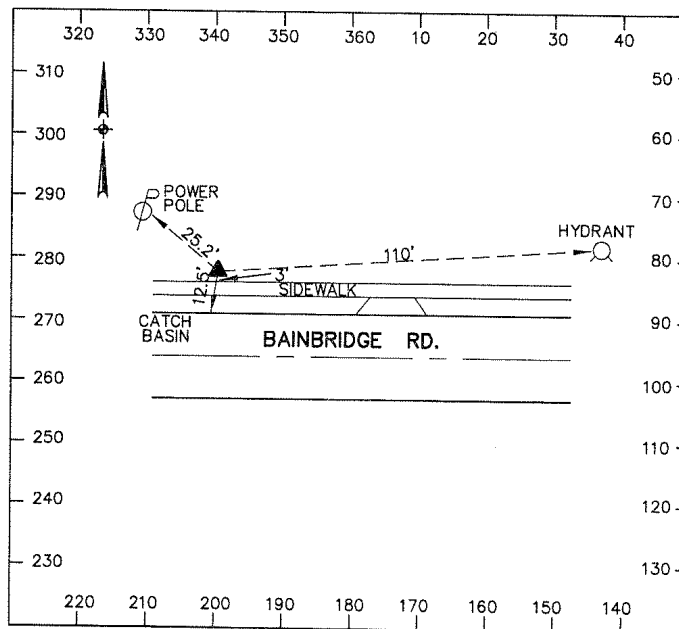
Station Name: 2002-46 USGS Quad: Avon Type of Mark: Bronze Disk Stamping on Mark: 2002-46 Horizontal Datum: NAD83(1995) Latitude: 41-23-10.823007 North (y) Meters: 191069.653 North (y) USFeet: 626867.685 Convergence: 0-18-26.78 State Plane Coordinate System Zone: Ohio North (3401) Vertical Datum: NAVD88 Elevation (z) Meters: 222.653 Location: The station is located at the Southwest corner of the intersection of Maddock Road and Center Ridge Road in North Ridgeville. The station is a bronze disk in concrete.	Alias: None Township: Ridgeville Set By: KS Associates, Inc. Survey By: KS Associates, Inc. Horizontal Order: First    Method: GPS Longitude: 82-01-55.269337 East (x) Meters: 639140.876 East (x) USFeet: 2096914.690 Combined Scale Factor: 0.99992503 Vertical Order: Second Elevation (z) USFeet: 730.488
--	---



## Lorain County Auditor's Office Geodetic Survey Marker

Station Name: 2002-47 USGS Quad: Avon Type of Mark: Bronze Disk Stamping on Mark: 2002-47 Horizontal Datum: NAD83(1995) Latitude: 41-23-06.903533 North (y) Meters: 190961.571 North (y) USFeet: 626513.089 Convergence: 0-19-32.44 State Plane Coordinate System Zone: Ohio North (3401) Vertical Datum: NAVD88 Elevation (z) Meters: 224.698	Alias: None Township: Ridgeville Set By: KS Associates, Inc. Survey By: KS Associates, Inc. Horizontal Order: First    Method: GPS Longitude: 82-00-15.326625 East (x) Meters: 641463.480 East (x) USFeet: 2104534.767 Combined Scale Factor: 0.99992460 Vertical Order: Second Elevation (z) USFeet: 737.196
---	---

Location: To reach the monument, commence at the intersection of Root Road and Bainbridge Road in North Ridgeville and travel East on Bainbridge Road 0.4 miles more or less to the station on the left. The station is a bronze disk in concrete.

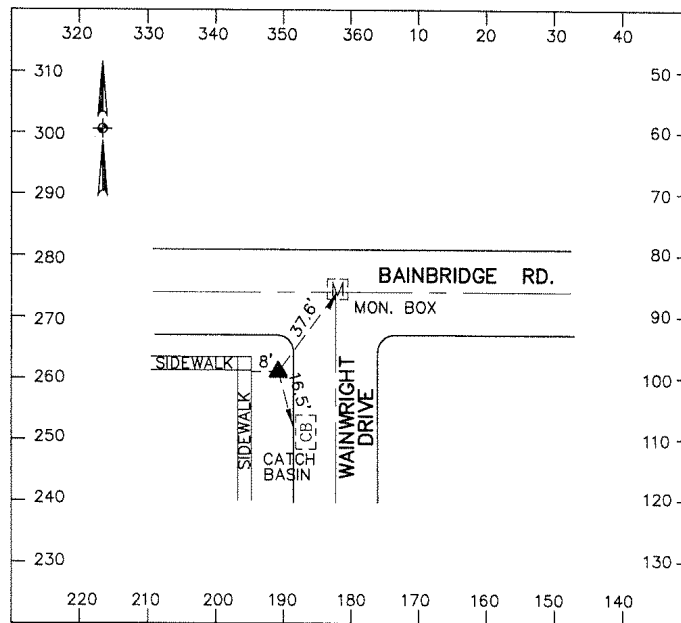




## Lorain County Auditor's Office Geodetic Survey Marker

Station Name: 2002-48	Alias: None
USGS Quad: Avon	Township: Ridgeville
Type of Mark: Bronze Disk	Set By: KS Associates, Inc.
Stamping on Mark: 2002-48	Survey By: KS Associates, Inc.
Horizontal Datum: NAD83(1995)	Horizontal Order: First      Method: GPS
Latitude: 41-23-06.346706	Longitude: 82-00-01.741240
North (y) Meters: 190946.195	East (x) Meters: 641779.205
North (y) USFeet: 626462.642	East (x) USFeet: 2105570.609
Convergence: 0-19-41.37	Combined Scale Factor: 0.99992447
State Plane Coordinate System Zone: Ohio North (3401)	
Vertical Datum: NAVD88	Vertical Order: Second
Elevation (z) Meters: 225.418	Elevation (z) USFeet: 739.560

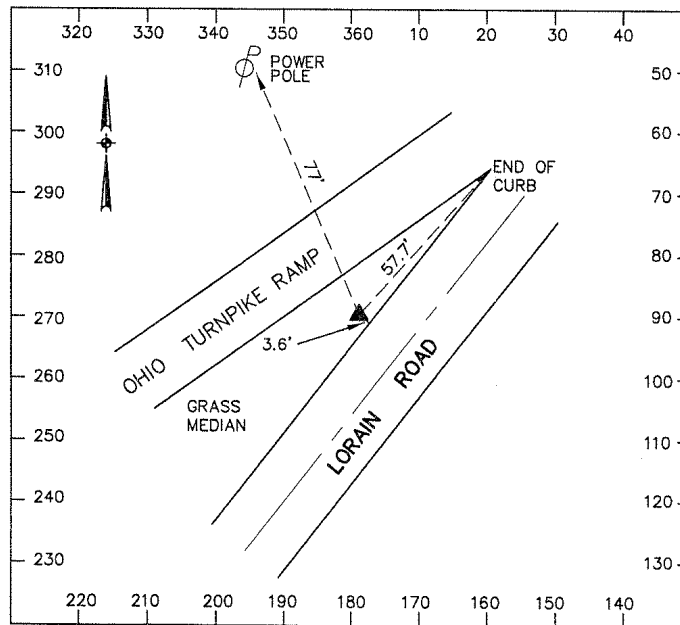
Location: To reach the monument, commence at the intersection of Root Road and Bainbridge Road in North Ridgeville and travel East on Bainbridge Road 0.6 miles more or less to the station on the right at the Southwest corner of the intersection of Bainbridge Road and Wainwright Drive. The station is a bronze disk in concrete.



## Lorain County Auditor's Office Geodetic Survey Marker

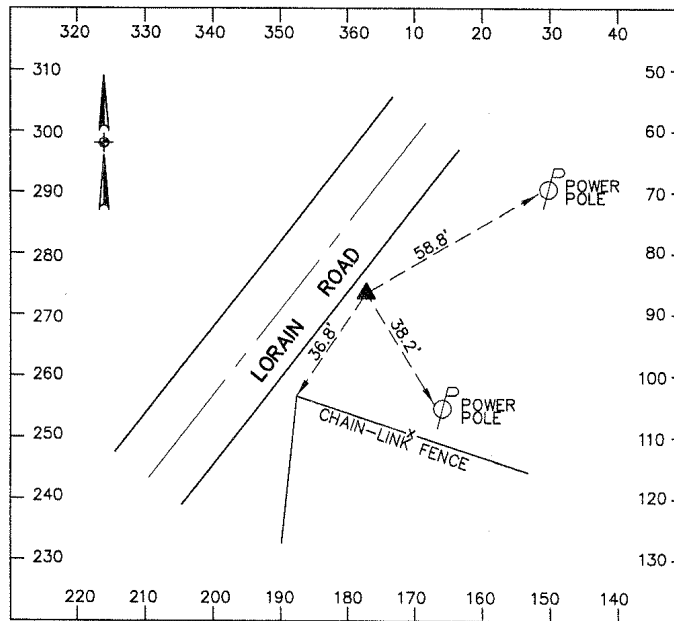
Station Name: 2002-49 USGS Quad: North Olmsted Type of Mark: Bronze Disk Stamping on Mark: 2002-49 Horizontal Datum: NAD83(1995) Latitude: 41-22-52.153071 North (y) Meters: 190517.301 North (y) USFeet: 625055.511 Convergence: 0-20-24.79 State Plane Coordinate System Zone: Ohio North (3401) Vertical Datum: NAVD88 Elevation (z) Meters: 235.747	Alias: None Township: Ridgeville Set By: KS Associates, Inc. Survey By: KS Associates, Inc. Horizontal Order: First    Method: GPS Longitude: 81-58-55.644534 East (x) Meters: 643317.422 East (x) USFeet: 2110617.241 Combined Scale Factor: 0.99992247 Vertical Order: Second Elevation (z) USFeet: 773.448
--	---

Location: To reach the monument, commence at the intersection of Lear Nagle Road and Butternut Ridge Road in North Ridgeville and travel Southwest on Butternut Ridge Road 0.4 miles more or less to the station on the right. The station is a bronze disk in concrete.



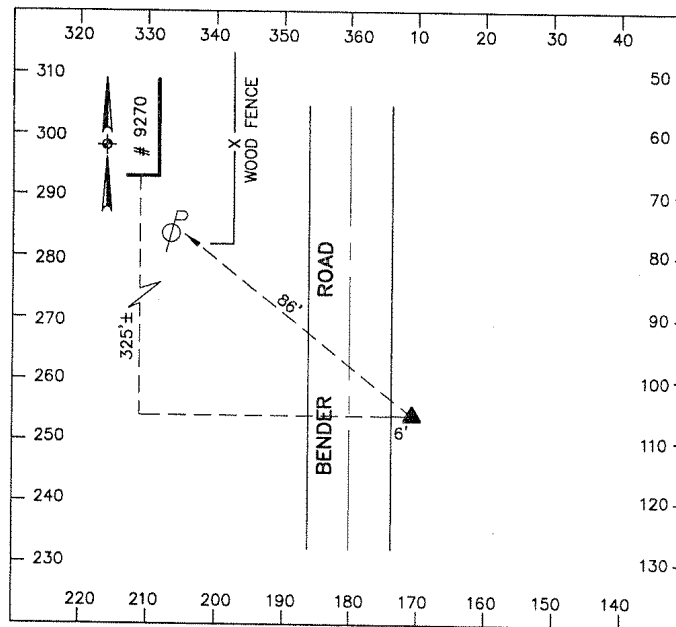
## Lorain County Auditor's Office Geodetic Survey Marker

Station Name: 2002-50 USGS Quad: North Olmsted Type of Mark: Bronze Disk Stamping on Mark: 2002-50 Horizontal Datum: NAD83(1995) Latitude: 41-23-05.692918 North (y) Meters: 190937.457 North (y) USFeet: 626433.972 Convergence: 0-20-36.51 State Plane Coordinate System Zone: Ohio North (3401) Vertical Datum: NAVD88 Elevation (z) Meters: 236.324 Location: The station is located at the Southwest corner of the intersection of Cook Road and Butternut Ridge Road in North Ridgeville. The station is a bronze disk in concrete.	Alias: None Township: Ridgeville Set By: KS Associates, Inc. Survey By: KS Associates, Inc. Horizontal Order: First    Method: GPS Longitude: 81-58-37.804613 East (x) Meters: 643729.415 East (x) USFeet: 2111968.923 Combined Scale Factor: 0.99992274 Vertical Order: Second Elevation (z) USFeet: 775.341
---	---



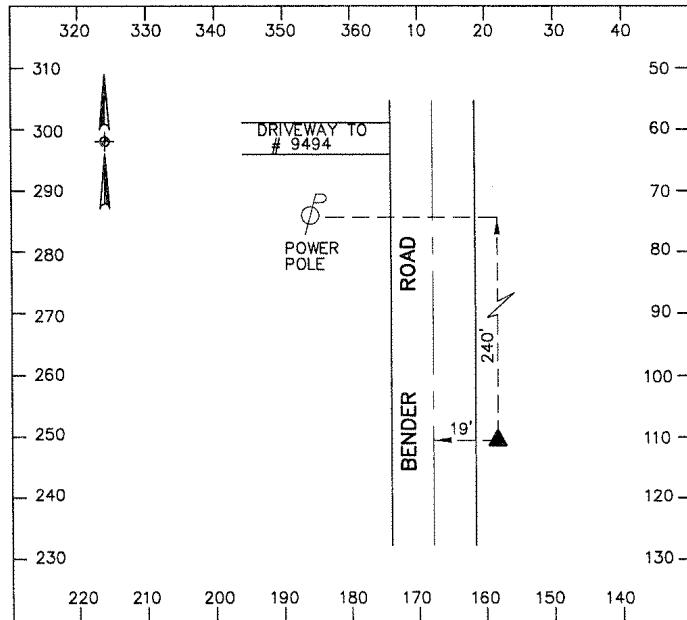
## Lorain County Auditor's Office Geodetic Survey Marker

Station Name: 2002-51 USGS Quad: Grafton Type of Mark: Bronze Disk Stamping on Mark: 2002-51 Horizontal Datum: NAD83(1995) Latitude: 41-21-21.255354 North (y) Meters: 187678.926 North (y) USFeet: 615743.277 Convergence: 0-17-28.70 State Plane Coordinate System Zone: Ohio North (3401) Vertical Datum: NAVD88 Elevation (z) Meters: 226.540 Location: To reach the monument, commence at the intersection of Sugar Ridge Road and Bender Road in North Ridgeville and travel South on Bender Road 0.8 miles more or less to the station on the left. The station is a bronze disk in concrete.	Alias: None Township: Ridgeville Set By: KS Associates, Inc. Survey By: KS Associates, Inc. Horizontal Order: First    Method: GPS Longitude: 82-03-23.685934 East (x) Meters: 637103.921 East (x) USFeet: 2090231.780 Combined Scale Factor: 0.99992161 Vertical Order: Second Elevation (z) USFeet: 743.240
--	---



## Lorain County Auditor's Office Geodetic Survey Marker

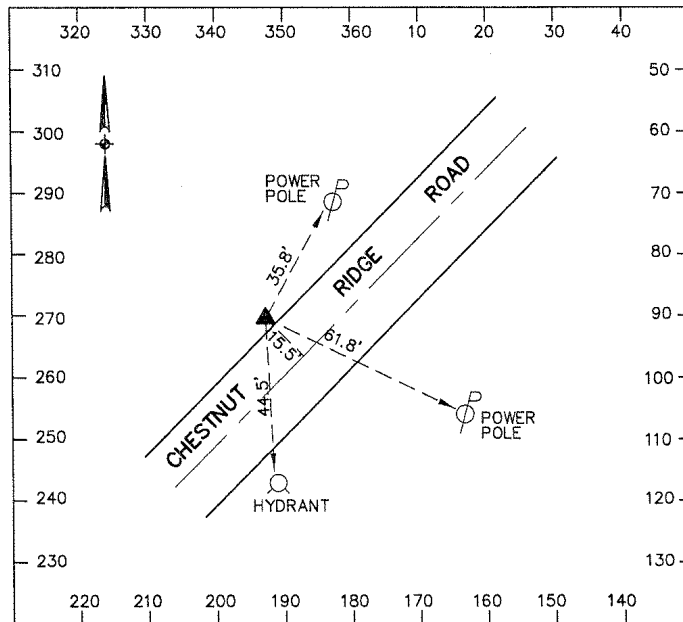
Station Name: 2002-52 USGS Quad: Grafton Type of Mark: Bronze Disk Stamping on Mark: 2002-52 Horizontal Datum: NAD83(1995) Latitude: 41-21-10.814287 North (y) Meters: 187356.824 North (y) USFeet: 614686.514 Convergence: 0-17-28.63 State Plane Coordinate System Zone: Ohio North (3401) Vertical Datum: NAVD88 Elevation (z) Meters: 226.971 Location: To reach the monument, commence at the intersection of Sugar Ridge Road and Bender Road in North Ridgeville and travel South on Bender Road 1.0 miles more or less to the station on the left. The station is a bronze disk in concrete.	Alias: None Township: Ridgeville Set By: KS Associates, Inc. Survey By: KS Associates, Inc. Horizontal Order: First    Method: GPS Longitude: 82-03-23.793961 East (x) Meters: 637103.047 East (x) USFeet: 2090228.914 Combined Scale Factor: 0.99992129 Vertical Order: Second Elevation (z) USFeet: 744.655
--	---



## Lorain County Auditor's Office Geodetic Survey Marker

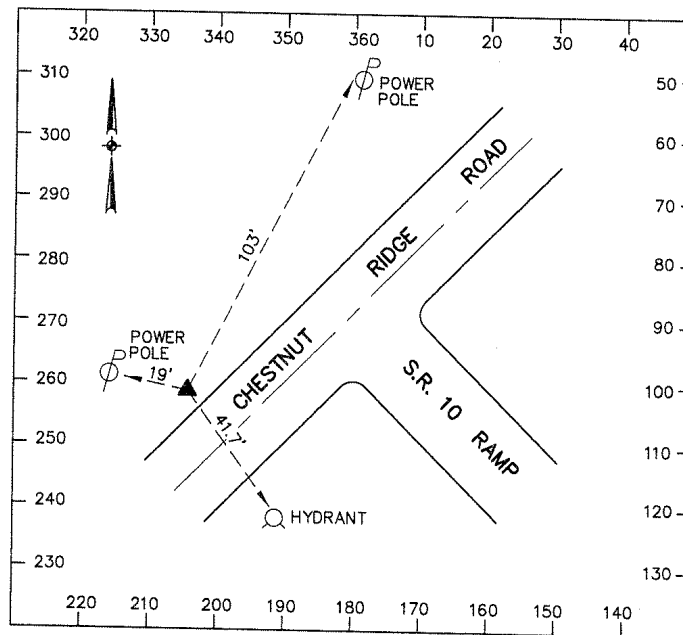
Station Name: 2002-53 USGS Quad: Grafton Type of Mark: Bronze Disk Stamping on Mark: 2002-53 Horizontal Datum: NAD83(1995) Latitude: 41-21-17.018259 North (y) Meters: 187559.240 North (y) USFeet: 615350.606 Convergence: 0-18-28.27 State Plane Coordinate System Zone: Ohio North (3401) Vertical Datum: NAVD88 Elevation (z) Meters: 230.929	Alias: None Township: Ridgeville Set By: KS Associates, Inc. Survey By: KS Associates, Inc. Horizontal Order: First    Method: GPS Longitude: 82-01-53.004320 East (x) Meters: 639212.361 East (x) USFeet: 2097149.221 Combined Scale Factor: 0.99992081 Vertical Order: Second Elevation (z) USFeet: 757.641
--	---

Location: To reach the monument, commence at the intersection of Chestnut Ridge Road and Wooster - Avon Lake Road in North Ridgeville and travel Southwest on Chestnut Ridge Road 0.8 miles more or less to the station on the right. The station is a bronze disk in concrete.



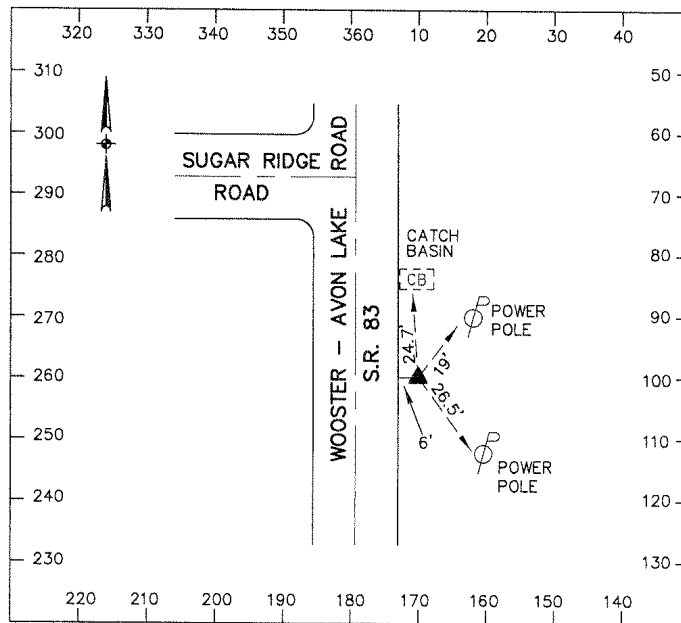
## Lorain County Auditor's Office Geodetic Survey Marker

Station Name: 2002-54 USGS Quad: Grafton Type of Mark: Bronze Disk Stamping on Mark: 2002-54 Horizontal Datum: NAD83(1995) Latitude: 41-21-23.512232 North (y) Meters: 187760.873 North (y) USFeet: 616012.132 Convergence: 0-18-35.12 State Plane Coordinate System Zone: Ohio North (3401) Vertical Datum: NAVD88 Elevation (z) Meters: 230.808 Location: To reach the monument, commence at the intersection of Chestnut Ridge Road and Wooster - Avon Lake Road in North Ridgeville and travel Southwest on Chestnut Ridge Road 0.6 miles more or less to the station on the right. The station is a bronze disk in concrete.	Alias: None Township: Ridgeville Set By: KS Associates, Inc. Survey By: KS Associates, Inc. Horizontal Order: First    Method: GPS Longitude: 82-01-42.582514 East (x) Meters: 639453.519 East (x) USFeet: 2097940.421 Combined Scale Factor: 0.99992099 Vertical Order: Second Elevation (z) USFeet: 757.243
---	---



## Lorain County Auditor's Office Geodetic Survey Marker

Station Name: 2002-55 USGS Quad: Grafton Type of Mark: Bronze Disk Stamping on Mark: 2002-55 Horizontal Datum: NAD83(1995) Latitude: 41-22-13.627416 North (y) Meters: 189311.292 North (y) USFeet: 621098.799 Convergence: 0-18-58.14 State Plane Coordinate System Zone: Ohio North (3401) Vertical Datum: NAVD88 Elevation (z) Meters: 226.953 Location: The station is located at the Southeast corner of the intersection of Sugar Ridge Road and Wooster - Avon Lake Road in North Ridgeville. The station is a bronze disk in concrete.	Alias: None Township: Ridgeville Set By: KS Associates, Inc. Survey By: KS Associates, Inc. Horizontal Order: First    Method: GPS Longitude: 82-01-07.534800 East (x) Meters: 640259.604 East (x) USFeet: 2100585.050 Combined Scale Factor: 0.99992285 Vertical Order: Second Elevation (z) USFeet: 744.596
--	---

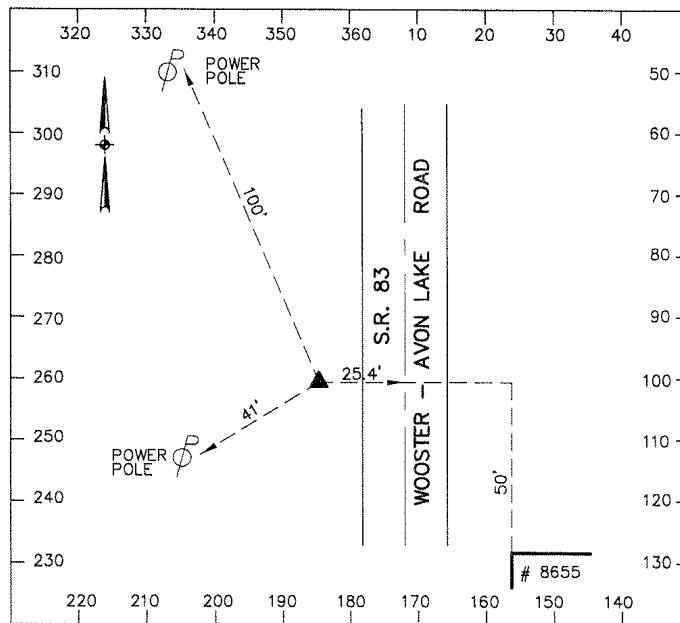




## Lorain County Auditor's Office Geodetic Survey Marker

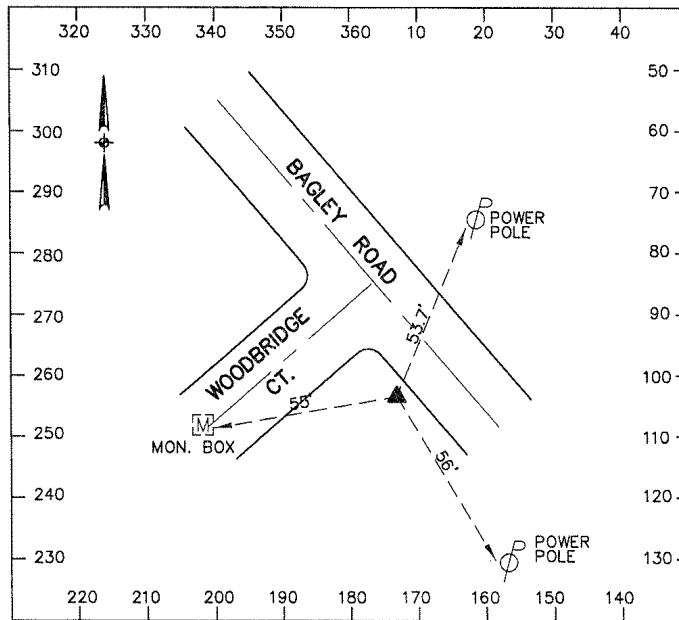
Station Name: 2002-56 USGS Quad: Grafton Type of Mark: Bronze Disk Stamping on Mark: 2002-56 Horizontal Datum: NAD83(1995) Latitude: 41-21-58.605509 North (y) Meters: 188847.767 North (y) USFeet: 619578.050 Convergence: 0-18-57.51 State Plane Coordinate System Zone: Ohio North (3401) Vertical Datum: NAVD88 Elevation (z) Meters: 228.252	Alias: None Township: Ridgeville Set By: KS Associates, Inc. Survey By: KS Associates, Inc. Horizontal Order: First    Method: GPS Longitude: 82-01-08.501704 East (x) Meters: 640239.690 East (x) USFeet: 2100519.717 Combined Scale Factor: 0.99992226 Vertical Order: Second Elevation (z) USFeet: 748.856
--	---

Location: To reach the monument, commence at the intersection of Chestnut Ridge Road and Wooster - Avon Lake Road in North Ridgeville and travel North on Wooster - Avon Lake Road 0.3 miles more or less to the station on the left. The station is a bronze disk in concrete.



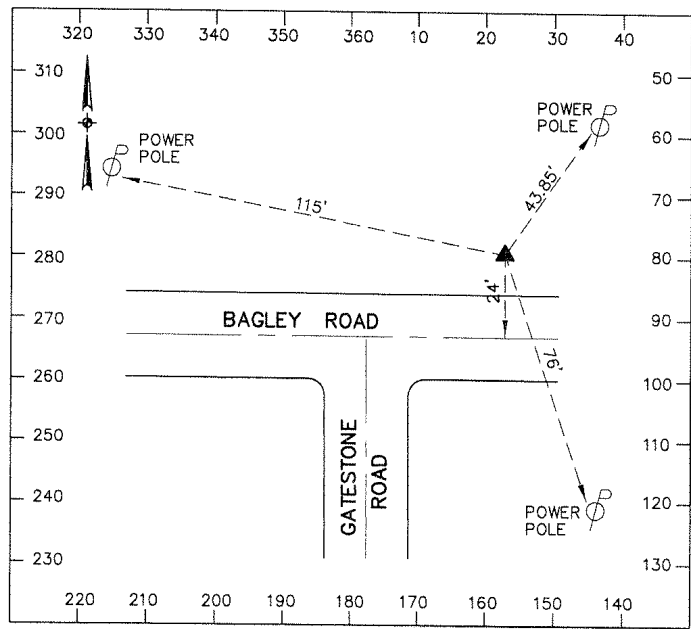
## Lorain County Auditor's Office Geodetic Survey Marker

Station Name: 2002-57 USGS Quad: West View Type of Mark: Bronze Disk Stamping on Mark: 2002-57 Horizontal Datum: NAD83(1995) Latitude: 41-22-14.105088 North (y) Meters: 189340.574 North (y) USFeet: 621194.867 Convergence: 0-20-10.38 State Plane Coordinate System Zone: Ohio North (3401) Vertical Datum: NAVD88 Elevation (z) Meters: 237.773 Location: To reach the monument, commence at the intersection of Bagley Road and Butternut Ridge Road in North Ridgeville and travel Easterly on Bagley Road 0.3 miles more or less to the station on the right at the Southeast corner of the intersection of Bagley Road and Woodbridge Court. The station is a bronze disk in concrete.	Alias: None Township: Ridgeville Set By: KS Associates, Inc. Survey By: KS Associates, Inc. Horizontal Order: First      Method: GPS Longitude: 81-59-17.581940 East (x) Meters: 642814.610 East (x) USFeet: 2108967.599 Combined Scale Factor: 0.99992116 Vertical Order: Second Elevation (z) USFeet: 780.093
--	---



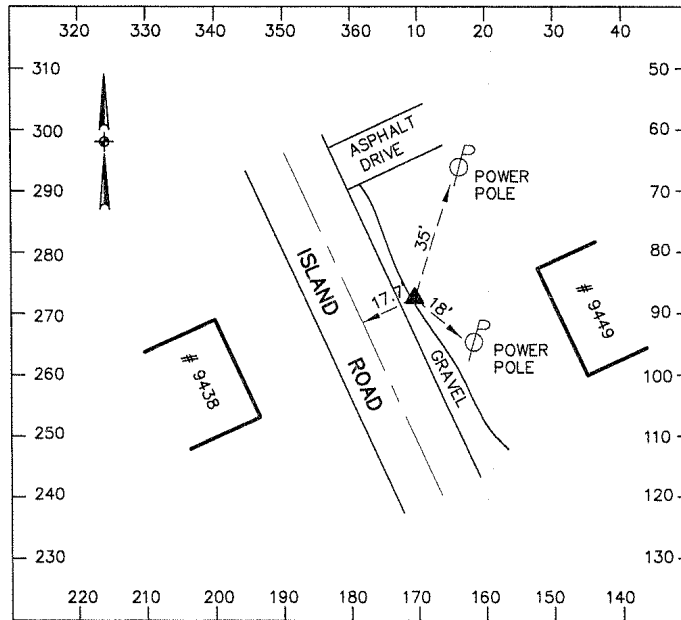
## Lorain County Auditor's Office Geodetic Survey Marker

Station Name: 2002-58 USGS Quad: West View Type of Mark: Bronze Disk Stamping on Mark: 2002-58 Horizontal Datum: NAD83(1995) Latitude: 41-22-14.019662 North (y) Meters: 189340.195 North (y) USFeet: 621193.623 Convergence: 0-20-21.20 State Plane Coordinate System Zone: Ohio North (3401) Vertical Datum: NAVD88 Elevation (z) Meters: 238.414 Location: To reach the monument, commence at the intersection of Bagley Road and Butternut Ridge Road in North Ridgeville and travel Easterly on Bagley Road 0.5 miles more or less to the station on the left at the Northeast corner of the intersection of Bagley Road and Gatestone Road. The station is a bronze disk in concrete.	Alias: None Township: Ridgeville Set By: KS Associates, Inc. Survey By: KS Associates, Inc. Horizontal Order: First    Method: GPS Longitude: 81-59-01.109356 East (x) Meters: 643197.415 East (x) USFeet: 2110223.520 Combined Scale Factor: 0.99992106 Vertical Order: Second Elevation (z) USFeet: 782.197
---	---



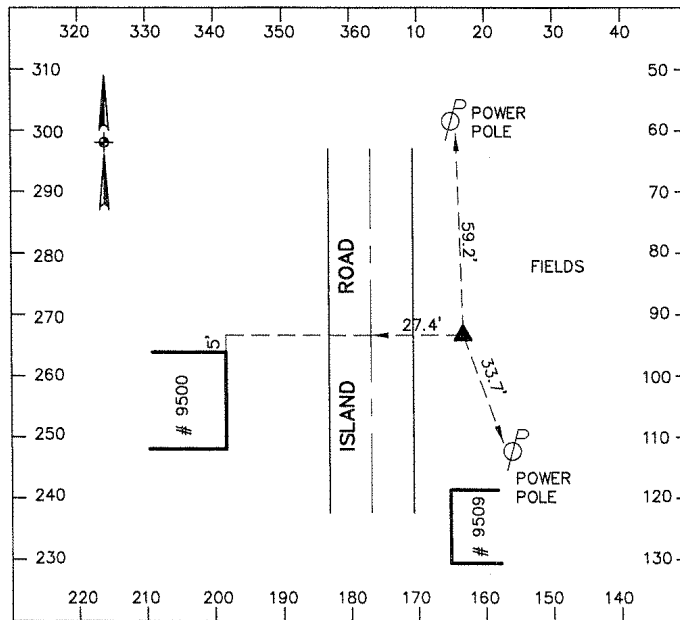
## Lorain County Auditor's Office Geodetic Survey Marker

Station Name: 2002-59 USGS Quad: Grafton Type of Mark: Bronze Disk Stamping on Mark: 2002-59 Horizontal Datum: NAD83(1995) Latitude: 41-21-18.040695 North (y) Meters: 187604.159 North (y) USFeet: 615497.977 Convergence: 0-19-36.54 State Plane Coordinate System Zone: Ohio North (3401) Vertical Datum: NAVD88 Elevation (z) Meters: 237.666 Location: To reach the monument, commence at the intersection of Butternut Ridge Road and Island Road in North Ridgeville and travel South on Island Road 0.5 miles more or less to the station on the left. The station is a bronze disk in concrete.	Alias: None Township: Ridgeville Set By: KS Associates, Inc. Survey By: KS Associates, Inc. Horizontal Order: First    Method: GPS Longitude: 82-00-09.083900 East (x) Meters: 641627.672 East (x) USFeet: 2105073.453 Combined Scale Factor: 0.99991978 Vertical Order: Second Elevation (z) USFeet: 779.743
--	---



## Lorain County Auditor's Office Geodetic Survey Marker

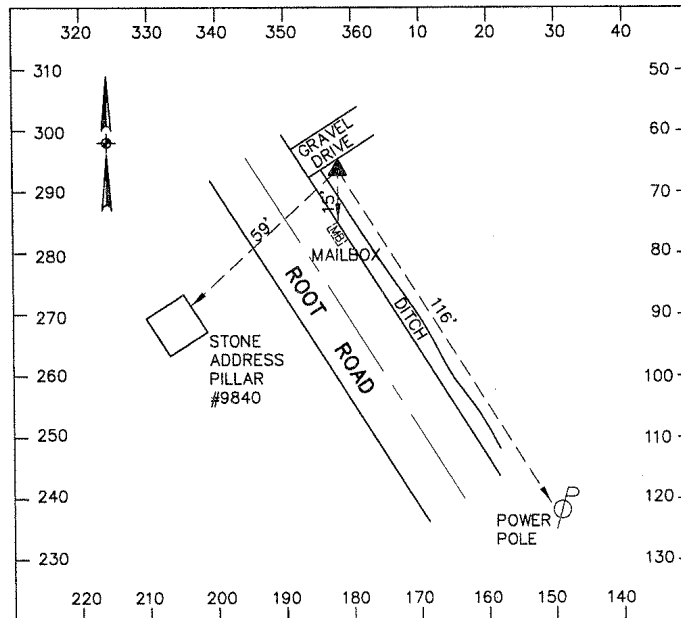
Station Name: 2002-60 USGS Quad: Grafton Type of Mark: Bronze Disk Stamping on Mark: 2002-60 Horizontal Datum: NAD83(1995) Latitude: 41-21-04.799836 North (y) Meters: 187196.434 North (y) USFeet: 614160.301 Convergence: 0-19-40.17 State Plane Coordinate System Zone: Ohio North (3401) Vertical Datum: NAVD88 Elevation (z) Meters: 238.521 Location: To reach the monument, commence at the intersection of Butternut Ridge Road and Island Road in North Ridgeville and travel South on Island Road 0.8 miles more or less to the station on the left. The station is a bronze disk in concrete.	Alias: None Township: Eaton Set By: KS Associates, Inc. Survey By: KS Associates, Inc. Horizontal Order: First    Method: GPS Longitude: 82-00-03.569930 East (x) Meters: 641758.173 East (x) USFeet: 2105501.606 Combined Scale Factor: 0.99991932 Vertical Order: Second Elevation (z) USFeet: 782.548
--	--



## Lorain County Auditor's Office Geodetic Survey Marker

Station Name: 2002-61	Alias: None
USGS Quad: West View	Township: Eaton
Type of Mark: Bronze Disk	Set By: KS Associates, Inc.
Stamping on Mark: 2002-61	Survey By: KS Associates, Inc.
Horizontal Datum: NAD83(1995)	Horizontal Order: First      Method: GPS
Latitude: 41-20-47.430484	Longitude: 81-58-26.499173
North (y) Meters: 186673.882	East (x) Meters: 644017.796
North (y) USFeet: 612445.893	East (x) USFeet: 2112915.052
Convergence: 0-20-43.94	Combined Scale Factor: 0.99991862
State Plane Coordinate System Zone: Ohio North (3401)	
Vertical Datum: NAVD88	Vertical Order: Second
Elevation (z) Meters: 240.318	Elevation (z) USFeet: 788.443

Location: To reach the monument, commence at the intersection of Root Road and Reed Road in North Ridgeville and travel Southeast on Root Road 1.4 miles more or less to the station on the left. The station is a bronze disk in concrete.



## Lorain County Auditor's Office Geodetic Survey Marker

Station Name: 2002-62 USGS Quad: West View Type of Mark: Bronze Disk Stamping on Mark: 2002-62 Horizontal Datum: NAD83(1995) Latitude: 41-20-35.929287 North (y) Meters: 186320.618 North (y) USFeet: 611286.895 Convergence: 0-20-51.07 State Plane Coordinate System Zone: Ohio North (3401) Vertical Datum: NAVD88 Elevation (z) Meters: 242.459 Location: To reach the monument, commence at the intersection of Root Road and Reed Road in North Ridgeville and travel Southeast on Root Road 1.7 miles more or less to the station on the right at the Southwest corner of the intersection of Root Road and Hawke Road. The station is a bronze disk in concrete.	Alias: None Township: Columbia Set By: KS Associates, Inc. Survey By: KS Associates, Inc. Horizontal Order: First      Method: GPS Longitude: 81-58-15.641213 East (x) Meters: 644272.357 East (x) USFeet: 2113750.226 Combined Scale Factor: 0.99991801 Vertical Order: Second Elevation (z) USFeet: 795.469
--	---

