

Mark R. Stewart
Lorain County Auditor

1995 GPS Survey

Monumentation

Data Sheets

1995
LORAIN COUNTY OHIO
OHIO NORTH ZONE(3401)
NAD_83

POINT NUMBER: LC073

LATITUDE: 41:10'37.85811" N LONGITUDE: 82:21'04.31618" W

EASTING(FT) 2009461.45 NORTHING(FT) 550352.24 ELEV(FT) 910.42 NAVD_88

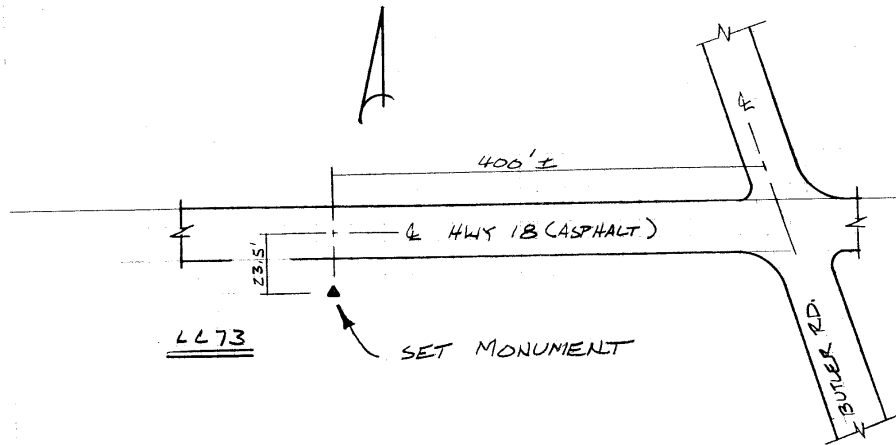
EASTING(M) 612485.076 NORTHING(M) 167747.697 ELEV(M) 277.495 NAVD_88

THETA: 0:05'51.917" COMBINATION FACTOR: 0.999897415

DESIGNATION: LC-73 1995 LORAIN CO GPS CONTROL POINT

MONUMENT TYPE: 5/8" dia aluminum rod monument with a 2 1/2" dia stamped aluminum survey cap encased in a PVC pipe with an aluminum access cover. Approx 6" below the surface of the ground.

PRINTED February 26, 1996



1995
LORAIN COUNTY OHIO
OHIO NORTH ZONE(3401)
NAD_83

POINT NUMBER: LC074

LATITUDE: 41:03'56.94253" N LONGITUDE: 82:20'12.48341" W

EASTING(FT) 2013500.80 NORTHING(FT) 509785.06 ELEV(FT) 1045.18 NAVD_88

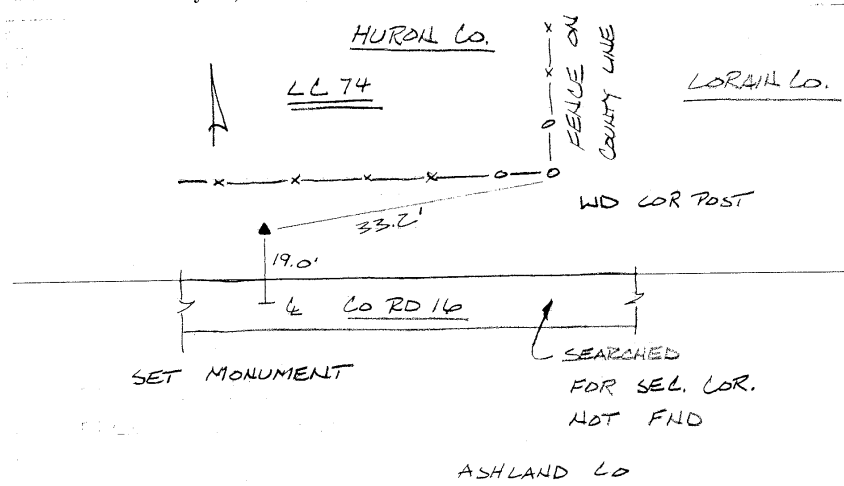
EASTING(M) 613716.272 NORTHING(M) 155382.796 ELEV(M) 318.573 NAVD_88

THETA: 0:06'25.969" COMBINATION FACTOR: 0.999889150

DESIGNATION: LC-74 1995 LORAIN CO GPS CONTROL POINT

MONUMENT TYPE: 5/8" dia aluminum rod monument with a 2 1/2" dia stamped aluminum survey cap encased in a PVC pipe with an aluminum access cover. Approx 6" below the surface of the ground.

PRINTED February 26, 1996



1995
LORAIN COUNTY OHIO
OHIO NORTH ZONE(3401)
NAD_83

POINT NUMBER: LC075

LATITUDE: 41:10'43.03783" N LONGITUDE: 82:18'30.93939" W

EASTING(FT) 2021188.35 NORTHING(FT) 550899.33 ELEV(FT) 908.16 NAVD_88

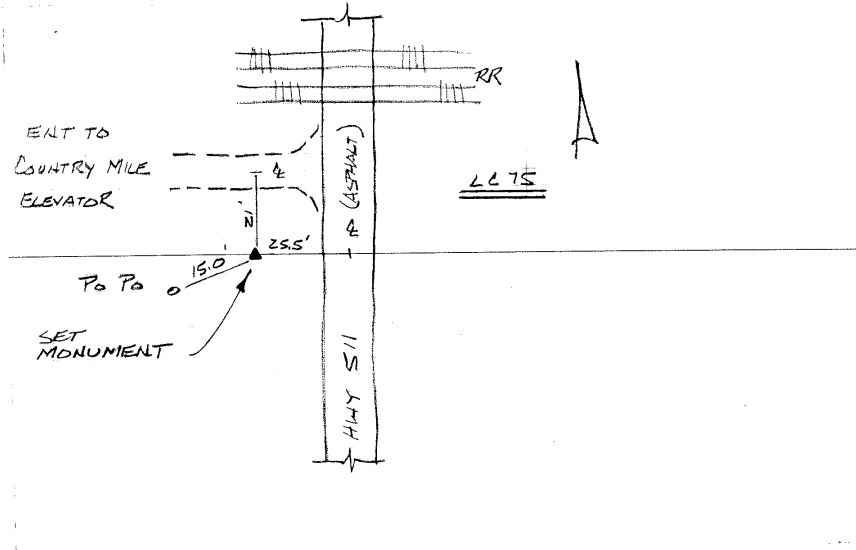
EASTING(M) 616059.442 NORTHING(M) 167914.450 ELEV(M) 276.807 NAVD_88

THETA: 0:07'32.678" COMBINATION FACTOR: 0.999897571

DESIGNATION: LC-75 1995 LORAIN CO GPS CONTROL POINT

MONUMENT TYPE: 5/8" dia aluminum rod monument with a 2 1/2" dia stamped aluminum survey cap encased in a PVC pipe with an aluminum access cover. Approx 6" below the surface of the ground.

PRINTED February 26, 1996



2-10

1995
LORAIN COUNTY OHIO
OHIO NORTH ZONE(3401)
NAD_83

POINT NUMBER: LC076

LATITUDE: 41:25'39.15406" N LONGITUDE: 82:17'53.64617" W

EASTING(FT) 2023830.12 NORTHING(FT) 641599.88 ELEV(FT) 602.74 NAVD_88

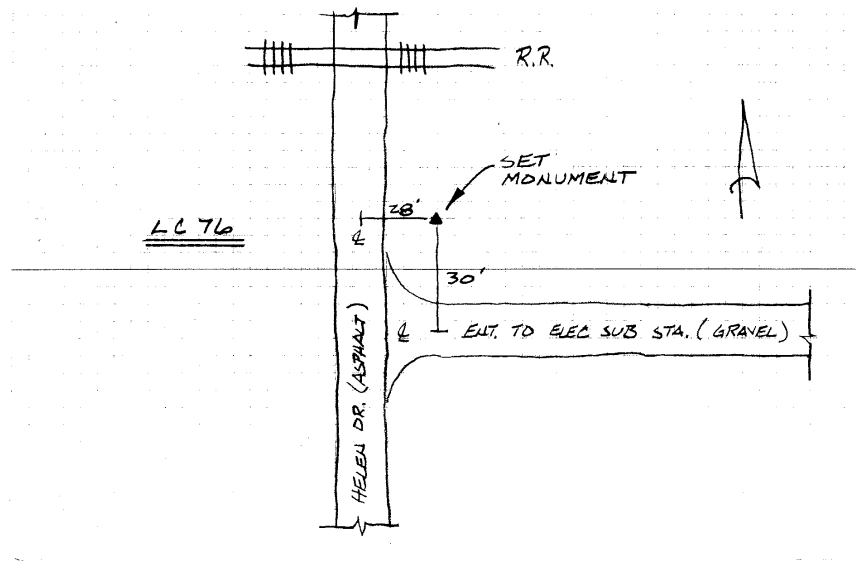
EASTING(M) 616864.655 NORTHING(M) 195560.036 ELEV(M) 183.717 NAVD_88

THETA: 0:07'57.178" COMBINATION FACTOR: 0.999929993

DESIGNATION: LC-76 1995 LORAIN CO GPS CONTROL POINT

MONUMENT TYPE: 5/8" dia aluminum rod monument with a 2 1/2" dia stamped aluminum survey cap encased in a PVC pipe with an aluminum access cover. Approx 6" below the surface of the ground.

PRINTED February 26, 1996



2-11

1995
LORAIN COUNTY OHIO
OHIO NORTH ZONE(3401)
NAD_83

POINT NUMBER: LC077

LATITUDE: 41:26'05.08528" N LONGITUDE: 82:15'01.99277" W

EASTING(FT) 2036898.31 NORTHING(FT) 644258.24 ELEV(FT) 588.99 NAVD_88

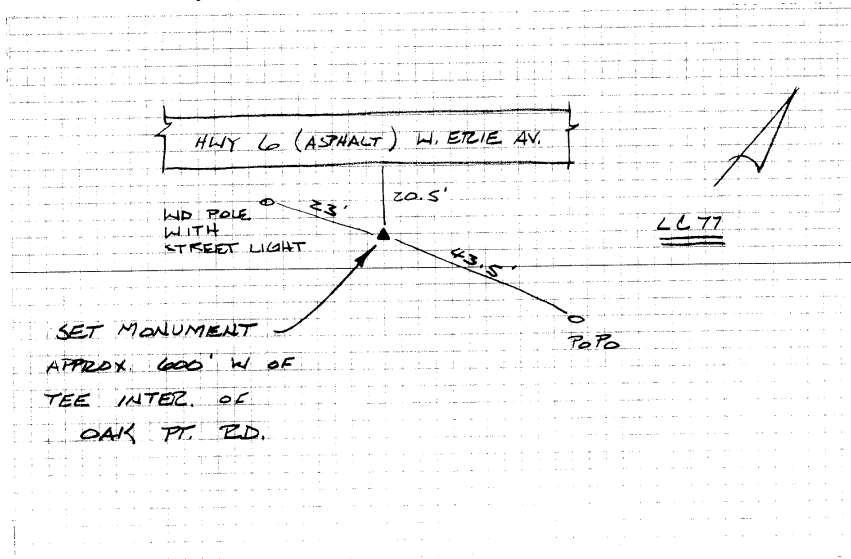
EASTING(M) 620847.846 NORTHING(M) 196370.304 ELEV(M) 179.524 NAVD_88

THETA: 0:09'49.946" COMBINATION FACTOR: 0.999931448

DESIGNATION: LC-77 1995 LORAIN CO GPS CONTROL POINT

MONUMENT TYPE: 5/8" dia aluminum rod monument with a 2 1/2" dia stamped aluminum survey cap encased in a PVC pipe with an aluminum access cover. Approx 6" below the surface of the ground.

PRINTED February 26, 1996



1995
LORAIN COUNTY OHIO
OHIO NORTH ZONE(3401)
NAD_83

POINT NUMBER: LC078

LATITUDE: 41:10'09.38984" N LONGITUDE: 82:15'21.89643" W

EASTING(FT) 2035652.83 NORTHING(FT) 547530.06 ELEV(FT) 854.95 NAVD_88

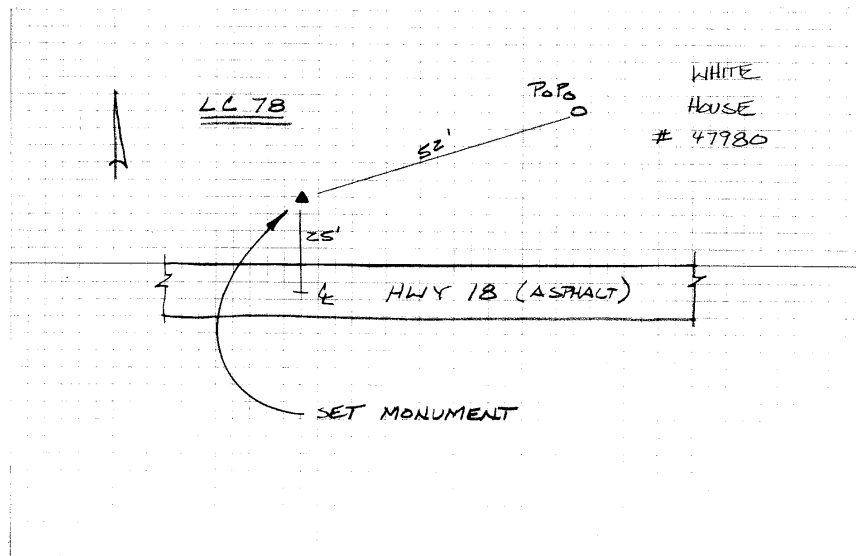
EASTING(M) 620468.223 NORTHING(M) 166887.496 ELEV(M) 260.590 NAVD_88

THETA: 0:09'36.870" COMBINATION FACTOR: 0.999899814

DESIGNATION: LC-78 1995 LORAIN CO GPS CONTROL POINT

MONUMENT TYPE: 5/8" dia aluminum rod monument with a 2 1/2" dia stamped aluminum survey cap encased in a PVC pipe with an aluminum access cover. Approx 6" below the surface of the ground.

PRINTED February 26, 1996



1995
LORAIN COUNTY OHIO
OHIO NORTH ZONE(3401)
NAD_83

POINT NUMBER: LC079

LATITUDE: 41:10'44.92876" N LONGITUDE: 82:12'46.52008" W

EASTING(FT) 2047523.33 NORTHING(FT) 551162.94 ELEV(FT) 845.01 NAVD_88

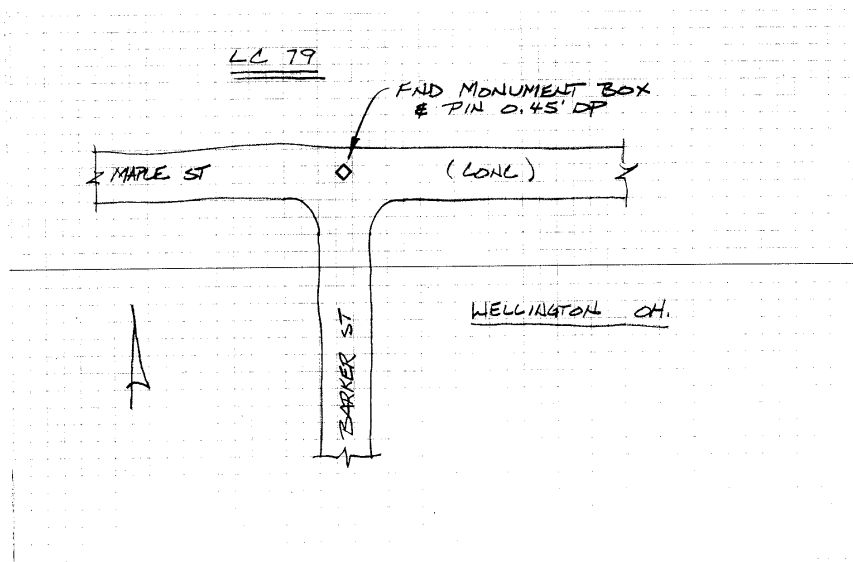
EASTING(M) 624086.360 NORTHING(M) 167994.800 ELEV(M) 257.560 NAVD_88

THETA: 0:11'18.944" COMBINATION FACTOR: 0.999900609

DESIGNATION: Existing monument box.

MONUMENT TYPE: Station mark is a metal rod located in a monument box.

PRINTED February 26, 1996



1995
LORAIN COUNTY OHIO
OHIO NORTH ZONE(3401)
NAD_83

POINT NUMBER: LC080

LATITUDE: 41:15'20.28594" N LONGITUDE: 82:12'30.29579" W

EASTING(FT) 2048670.72 NORTHING(FT) 579034.75 ELEV(FT) 801.42 NAVD_88

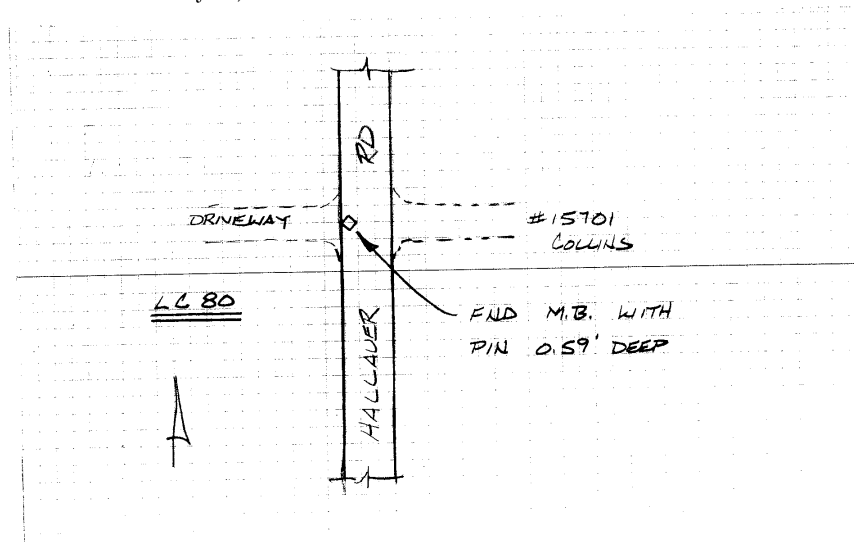
EASTING(M) 624436.085 NORTHING(M) 176490.144 ELEV(M) 244.273 NAVD_88

THETA: 0:11'29.603" COMBINATION FACTOR: 0.999906172

DESIGNATION: Existing monument box.

MONUMENT TYPE: Station mark is a metal rod located in a monument box.

PRINTED February 26, 1996



1995
LORAIN COUNTY OHIO
OHIO NORTH ZONE(3401)
NAD_83

POINT NUMBER: LC081

LATITUDE: 41:27'22.23779" N LONGITUDE: 82:12'27.38186" W

EASTING(FT) 2048648.30 NORTHING(FT) 652103.54 ELEV(FT) 598.16 NAVD_88

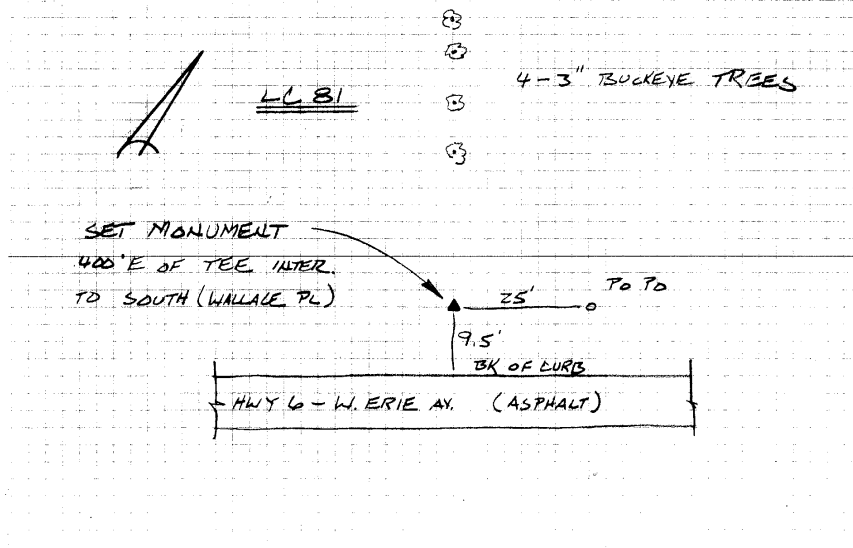
EASTING(M) 624429.252 NORTHING(M) 198761.556 ELEV(M) 182.321 NAVD_88

THETA: 0:11'31.517" COMBINATION FACTOR: 0.999933472

DESIGNATION: LC-81 1995 LORAIN CO GPS CONTROL POINT

MONUMENT TYPE: 5/8" dia aluminum rod monument with a 2 1/2" dia stamped aluminum survey cap encased in a PVC pipe with an aluminum access cover. Approx 6" below the surface of the ground.

PRINTED February 26, 1996



2-16

1995
LORAIN COUNTY OHIO
OHIO NORTH ZONE(3401)
NAD_83

POINT NUMBER: LC082

LATITUDE: 41:28'27.53897" N LONGITUDE: 82:09'45.73277" W

EASTING(FT) 2060930.95 NORTHING(FT) 658757.23 ELEV(FT) 591.97 NAVD_88

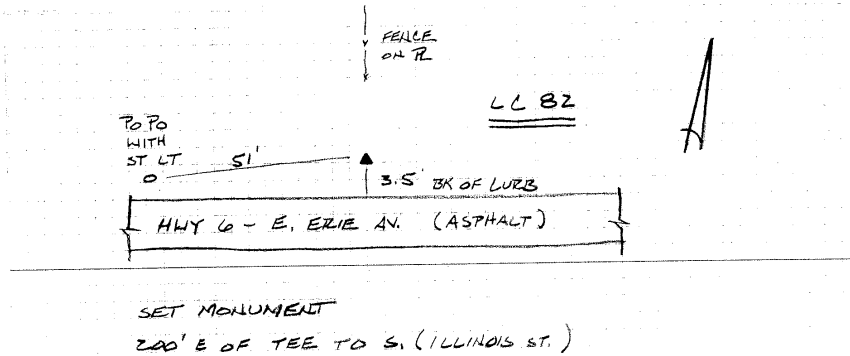
EASTING(M) 628173.009 NORTHING(M) 200789.605 ELEV(M) 180.434 NAVD_88

THETA: 0:13'17.713" COMBINATION FACTOR: 0.999935963

DESIGNATION: LC-82 1995 LORAIN CO GPS CONTROL POINT

MONUMENT TYPE: 5/8" dia aluminum rod monument with a 2 1/2" dia stamped aluminum survey cap encased in a PVC pipe with an aluminum access cover. Approx 6" below the surface of the ground.

PRINTED February 26, 1996



2-17

1995
LORAIN COUNTY OHIO
OHIO NORTH ZONE(3401)
NAD_83

POINT NUMBER: LC083

LATITUDE: 41:25'23.17369" N LONGITUDE: 82:09'45.95359" W

EASTING(FT) 2060986.29 NORTHING(FT) 640097.30 ELEV(FT) 710.13 NAVD_88

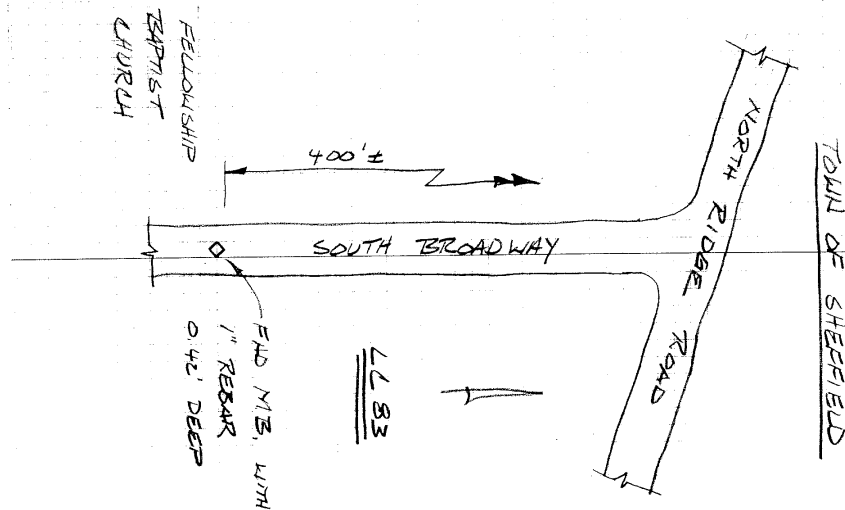
EASTING(M) 628189.878 NORTHING(M) 195102.046 ELEV(M) 216.449 NAVD_88

THETA: 0:13'17.568" COMBINATION FACTOR: 0.999924373

DESIGNATION: Existing monument box.

MONUMENT TYPE: Station mark is a metal rod located in a monument box.

PRINTED February 26, 1996



1995
LORAIN COUNTY OHIO
OHIO NORTH ZONE(3401)
NAD_83

POINT NUMBER: LC084

LATITUDE: 41:23'27.63347" N LONGITUDE: 82:09'53.55005" W

EASTING(FT) 2060452.53 NORTHING(FT) 628401.22 ELEV(FT) 748.19 NAVD_88

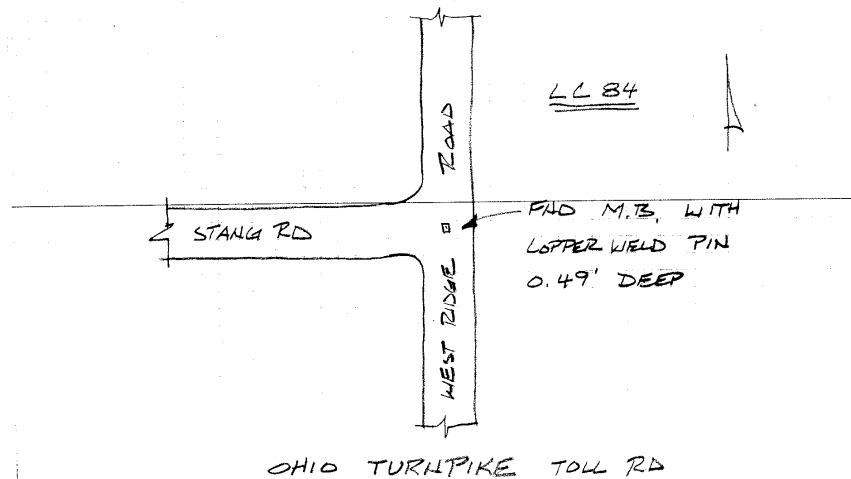
EASTING(M) 628027.187 NORTHING(M) 191537.074 ELEV(M) 228.049 NAVD_88

THETA: 0:13'12.577" COMBINATION FACTOR: 0.999919239

DESIGNATION: Existing monument box.

MONUMENT TYPE: Station mark is a metal rod located in a monument box.

PRINTED February 26, 1996



1995
LORAIN COUNTY OHIO
OHIO NORTH ZONE(3401)
NAD_83

POINT NUMBER: LC085

LATITUDE: 41:21'08.34777" N LONGITUDE: 82:09'56.35710" W

EASTING(FT) 2060292.63 NORTHING(FT) 614303.40 ELEV(FT) 782.67 NAVD_88

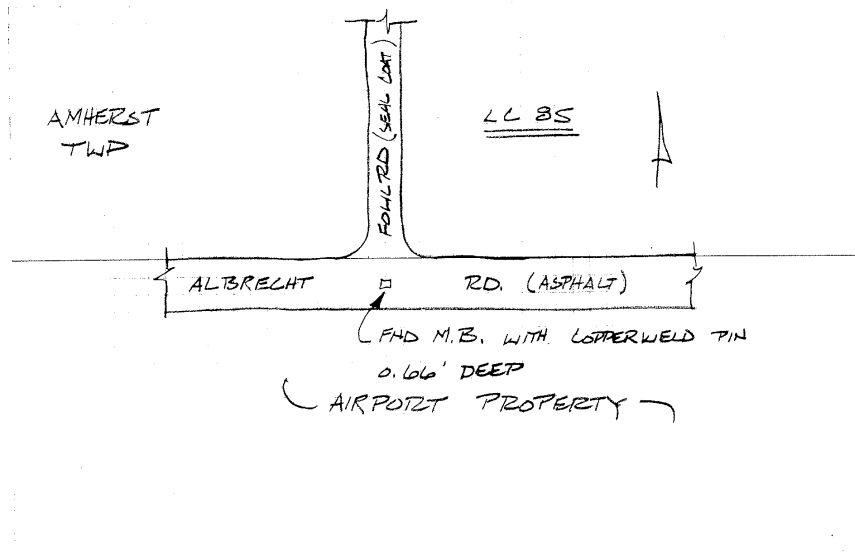
EASTING(M) 627978.448 NORTHING(M) 187240.050 ELEV(M) 238.559 NAVD_88

THETA: 0:13'10.733" COMBINATION FACTOR: 0.999914013

DESIGNATION: Existing monument box.

MONUMENT TYPE: Station mark is a metal rod located in a monument box.

PRINTED February 26, 1996



1995
LORAIN COUNTY OHIO
OHIO NORTH ZONE(3401)
NAD_83

POINT NUMBER: LC086

LATITUDE: 41:04'08.49219" N LONGITUDE: 82:10'01.49685" W

EASTING(FT) 2060294.65 NORTHING(FT) 511087.02 ELEV(FT) 1048.99 NAVD_88

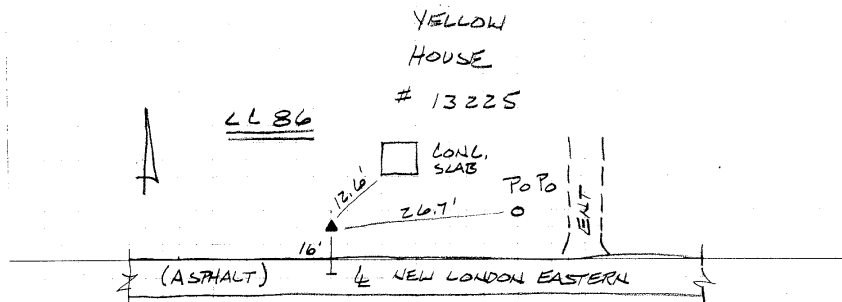
EASTING(M) 627979.066 NORTHING(M) 155779.634 ELEV(M) 319.732 NAVD_88

THETA: 0:13'07.357" COMBINATION FACTOR: 0.999888967

DESIGNATION: LC-86 1995 LORAIN CO GPS CONTROL POINT

MONUMENT TYPE: 5/8" dia aluminum rod monument with a 2 1/2" dia stamped aluminum survey cap encased in a PVC pipe with an aluminum access cover. Approx 6" below the surface of the ground.

PRINTED February 26, 1996



SET MONUMENT
DID NOT SET CARBONITE MARKER
AT REQUEST OF OWNER

1995
LORAIN COUNTY OHIO
OHIO NORTH ZONE(3401)
NAD_83

POINT NUMBER: LC087

LATITUDE: 41:21'10.21927" N LONGITUDE: 82:07'04.54934" W

EASTING(FT) 2073394.18 NORTHING(FT) 614546.62 ELEV(FT) 740.09 NAVD_88

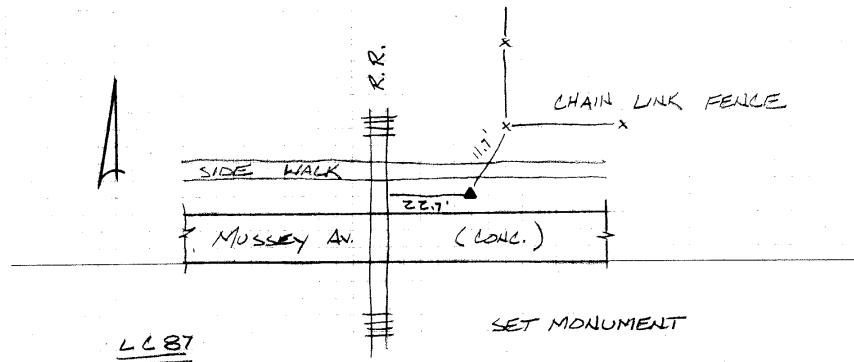
EASTING(M) 631971.810 NORTHING(M) 187314.186 ELEV(M) 225.580 NAVD_88

THETA: 0:15'03.602" COMBINATION FACTOR: 0.999916095

DESIGNATION: LC-87 1995 LORAIN CO GPS CONTROL POINT

MONUMENT TYPE: 5/8" dia aluminum rod monument with a 2 1/2" dia stamped aluminum survey cap encased in a PVC pipe with an aluminum access cover. Approx 6" below the surface of the ground.

PRINTED February 26, 1996



1995
LORAIN COUNTY OHIO
OHIO NORTH ZONE(3401)
NAD_83

POINT NUMBER: LC088

LATITUDE: 41:23'35.06702" N LONGITUDE: 82:06'59.75572" W

EASTING(FT) 2073695.30 NORTHING(FT) 629208.13 ELEV(FT) 702.87 NAVD_88

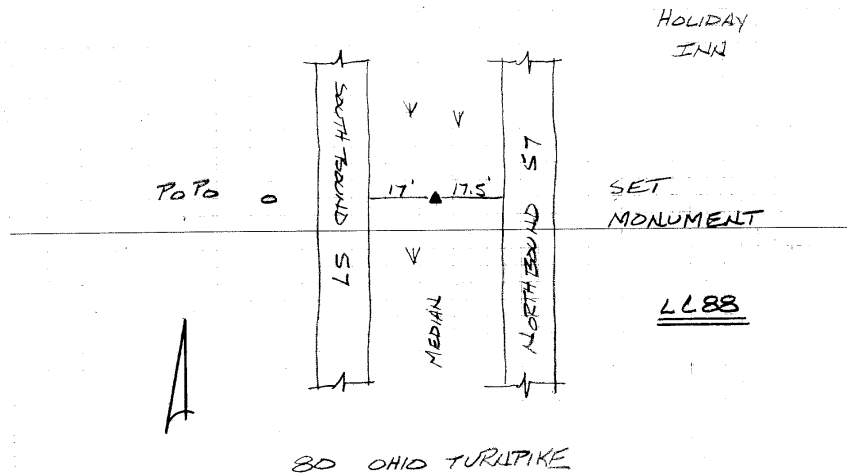
EASTING(M) 632063.592 NORTHING(M) 191783.021 ELEV(M) 214.236 NAVD_88

THETA: 0:15'06.751" COMBINATION FACTOR: 0.999921611

DESIGNATION: LC-88 1995 LORAIN CO GPS CONTROL POINT

MONUMENT TYPE: 5/8" dia aluminum rod monument with a 2 1/2" dia stamped aluminum survey cap encased in a PVC pipe with an aluminum access cover. Approx 6" below the surface of the ground.

PRINTED February 26, 1996



1995
LORAIN COUNTY OHIO
OHIO NORTH ZONE(3401)
NAD_83

POINT NUMBER: LC089

LATITUDE: 41:26'38.10275" N LONGITUDE: 82:06'20.02203" W

EASTING(FT) 2076639.80 NORTHING(FT) 647746.72 ELEV(FT) 626.95 NAVD_88

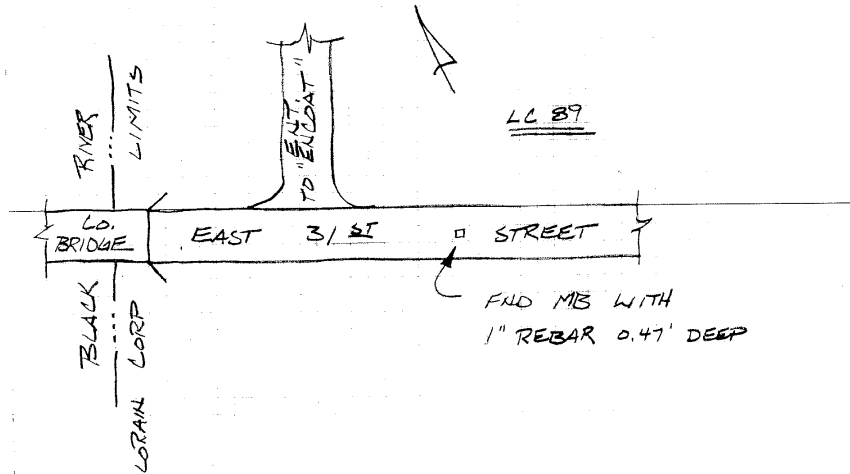
EASTING(M) 632961.077 NORTHING(M) 197433.596 ELEV(M) 191.094 NAVD_88

THETA: 0:15'32.854" COMBINATION FACTOR: 0.999930669

DESIGNATION: Existing monument box.

MONUMENT TYPE: Station mark is a metal rod located in a monument box.

PRINTED February 26, 1996



1995
LORAIN COUNTY OHIO
OHIO NORTH ZONE(3401)
NAD_83

POINT NUMBER: LC090

LATITUDE: 41:29'23.05527" N LONGITUDE: 82:06'46.08811" W

EASTING(FT) 2074580.61 NORTHING(FT) 664432.95 ELEV(FT) 594.30 NAVD_88

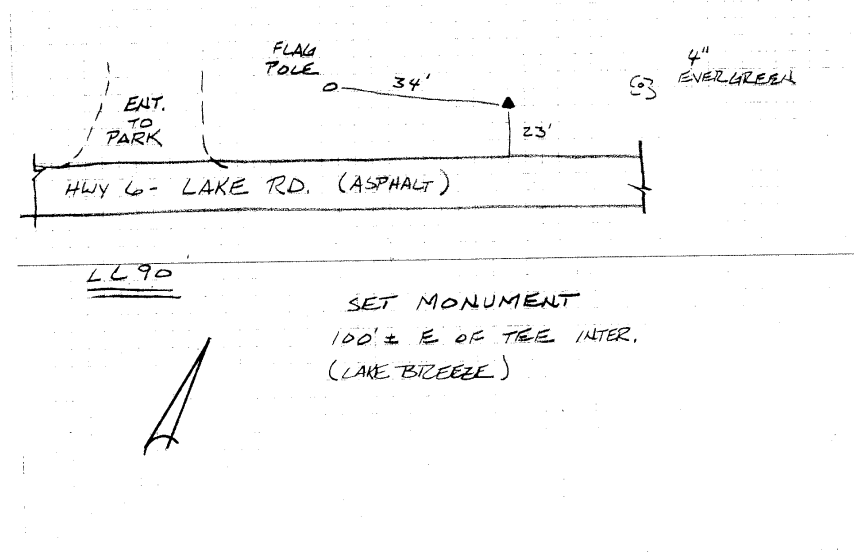
EASTING(M) 632333.433 NORTHING(M) 202519.568 ELEV(M) 181.143 NAVD_88

THETA: 0:15'15.730" COMBINATION FACTOR: 0.999937797

DESIGNATION: LC-90 1995 LORAIN CO GPS CONTROL POINT

MONUMENT TYPE: 5/8" dia aluminum rod monument with a 2 1/2" dia stamped aluminum survey cap encased in a PVC pipe with an aluminum access cover. Approx 6" below the surface of the ground.

PRINTED February 26, 1996



2-25

1995
LORAIN COUNTY OHIO
OHIO NORTH ZONE(3401)
NAD_83

POINT NUMBER: LC091

LATITUDE: 41:29'56.49233" N LONGITUDE: 82:04'03.71893" W

EASTING(FT) 2086920.48 NORTHING(FT) 667875.24 ELEV(FT) 595.72 NAVD_88

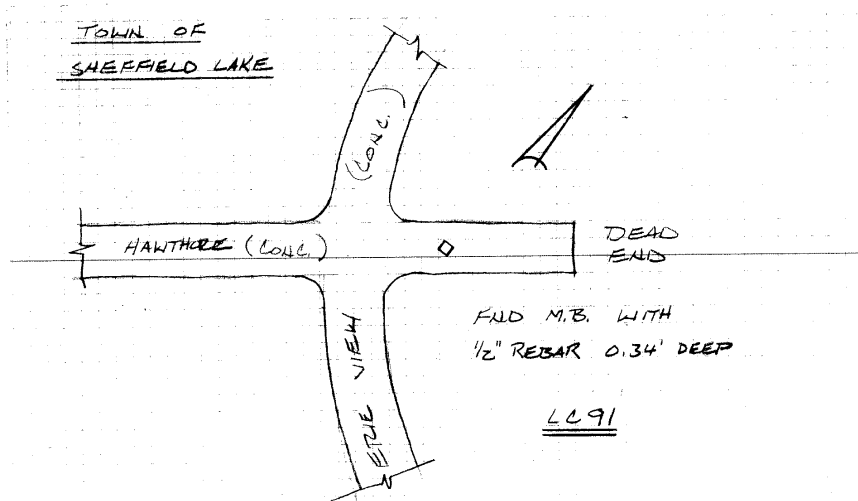
EASTING(M) 636094.636 NORTHING(M) 203568.782 ELEV(M) 181.576 NAVD_88

THETA: 0:17'02.399" COMBINATION FACTOR: 0.999938936

DESIGNATION: Existing monument box.

MONUMENT TYPE: Station mark is a metal rod located in a monument box.

PRINTED February 26, 1996



2-26

1995
LORAIN COUNTY OHIO
OHIO NORTH ZONE(3401)
NAD_83

POINT NUMBER: LC092

LATITUDE: 41:27'32.86682" N LONGITUDE: 82:04'05.19026" W

EASTING(FT) 2086880.52 NORTHING(FT) 653338.09 ELEV(FT) 625.19 NAVD_88

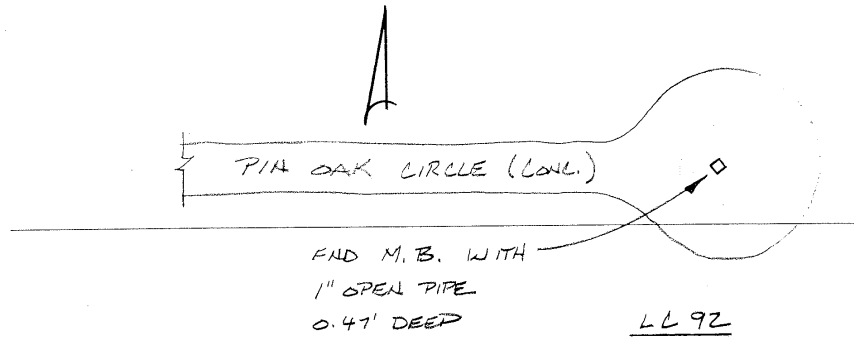
EASTING(M) 636082.454 NORTHING(M) 199137.848 ELEV(M) 190.557 NAVD_88

THETA: 0:17'01.432" COMBINATION FACTOR: 0.999932530

DESIGNATION: Existing monument box.

MONUMENT TYPE: Station mark is a metal rod located in a monument box.

PRINTED February 26, 1996



1995
LORAIN COUNTY OHIO
OHIO NORTH ZONE(3401)
NAD_83

POINT NUMBER: LC093

LATITUDE: 41:25'07.21656" N LONGITUDE: 82:03'44.89663" W

EASTING(FT) 2088499.58 NORTHING(FT) 638604.44 ELEV(FT) 690.46 NAVD_88

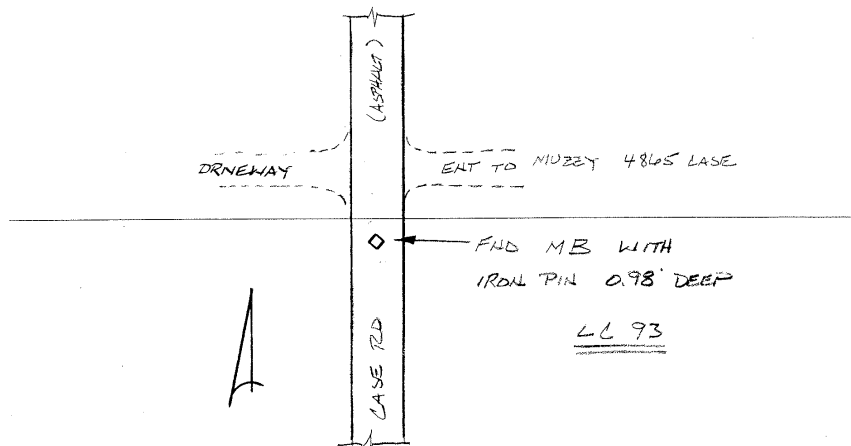
EASTING(M) 636575.945 NORTHING(M) 194647.024 ELEV(M) 210.451 NAVD_88

THETA: 0:17'14.764" COMBINATION FACTOR: 0.999924838

DESIGNATION: Existing monument box.

MONUMENT TYPE: Station mark is a metal rod located in a monument box.

PRINTED February 26, 1996



2-28

1995
LORAIN COUNTY OHIO
OHIO NORTH ZONE(3401)
NAD_83

POINT NUMBER: LC094

LATITUDE: 41:23'41.02749" N LONGITUDE: 82:04'07.40078" W

EASTING(FT) 2086828.24 NORTHING(FT) 629872.74 ELEV(FT) 706.54 NAVD_88

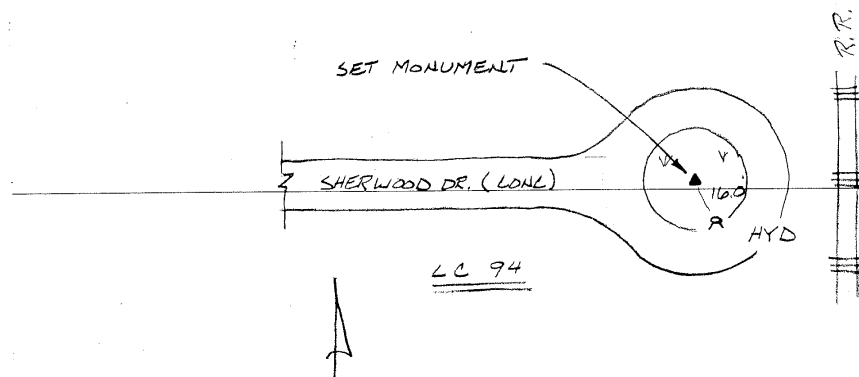
EASTING(M) 636066.521 NORTHING(M) 191985.594 ELEV(M) 215.353 NAVD_88

THETA: 0:16'59.980" COMBINATION FACTOR: 0.999921600

DESIGNATION: LC-94 1995 LORAIN CO GPS CONTROL POINT

MONUMENT TYPE: 5/8" dia aluminum rod monument with a 2 1/2" dia stamped aluminum survey cap encased in a PVC pipe with an aluminum access cover. Approx 6" below the surface of the ground.

PRINTED February 26, 1996



1995
LORAIN COUNTY OHIO
OHIO NORTH ZONE(3401)
NAD_83

POINT NUMBER: LC095

LATITUDE: 41:20'49.23215" N LONGITUDE: 82:04'09.79328" W

EASTING(FT) 2086731.76 NORTHING(FT) 612484.65 ELEV(FT) 747.43 NAVD_88

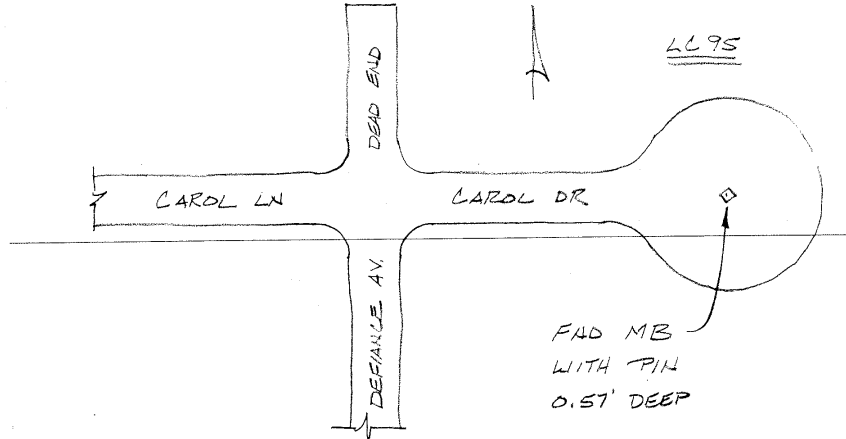
EASTING(M) 636037.111 NORTHING(M) 186685.694 ELEV(M) 227.816 NAVD_88

THETA: 0:16'58.408" COMBINATION FACTOR: 0.999915244

DESIGNATION: Existing monument box.

MONUMENT TYPE: Station mark is a metal rod located in a monument box.

PRINTED February 26, 1996



1995
LORAIN COUNTY OHIO
OHIO NORTH ZONE(3401)
NAD_83

POINT NUMBER: LC096

LATITUDE: 41:08'10.22531" N LONGITUDE: 82:01'25.09031" W

EASTING(FT) 2099712.83 NORTHING(FT) 535734.47 ELEV(FT) 1063.76 NAVD_88

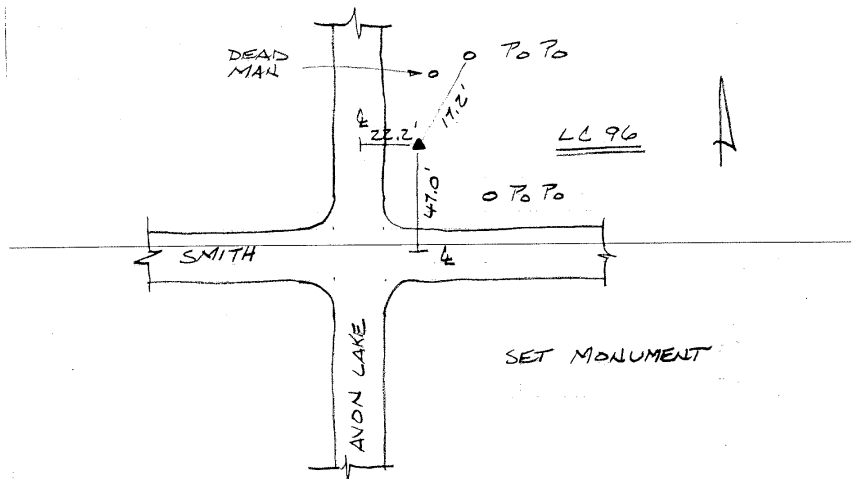
EASTING(M) 639993.751 NORTHING(M) 163292.194 ELEV(M) 324.235 NAVD_88

THETA: 0:18'46.610" COMBINATION FACTOR: 0.999888972

DESIGNATION: LC-96 1995 LORAIN CO GPS CONTROL POINT

MONUMENT TYPE: 5/8" dia aluminum rod monument with a 2 1/2" dia stamped aluminum survey cap encased in a PVC pipe with an aluminum access cover. Approx 6" below the surface of the ground.

PRINTED February 26, 1996



1995
LORAIN COUNTY OHIO
OHIO NORTH ZONE(3401)
NAD_83

POINT NUMBER: LC097

LATITUDE: 41:30'46.35130" N LONGITUDE: 82:01'12.71841" W

EASTING(FT) 2099904.36 NORTHING(FT) 672989.63 ELEV(FT) 592.00 NAVD_88

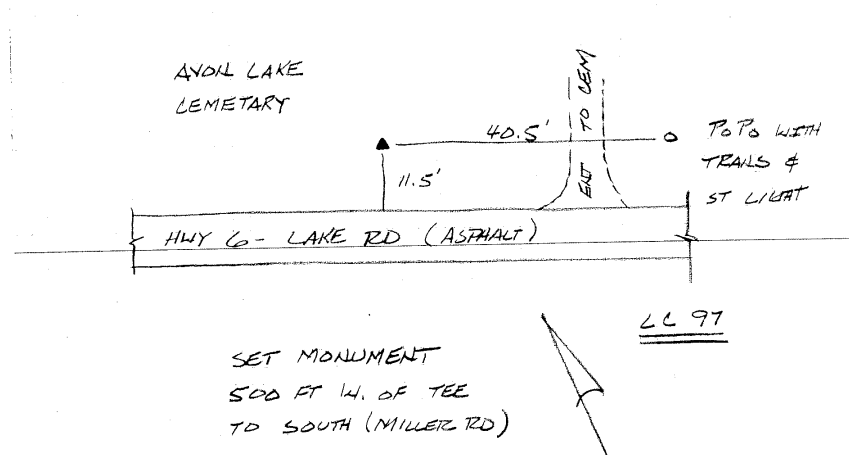
EASTING(M) 640052.130 NORTHING(M) 205127.649 ELEV(M) 180.442 NAVD_88

THETA: 0:18'54.738" COMBINATION FACTOR: 0.999940962

DESIGNATION: LC-97 1995 LORAIN CO GPS CONTROL POINT

MONUMENT TYPE: 5/8" dia aluminum rod monument with a 2 1/2" dia stamped aluminum survey cap encased in a PVC pipe with an aluminum access cover. Approx 6" below the surface of the ground.

PRINTED February 26, 1996



1995
LORAIN COUNTY OHIO
OHIO NORTH ZONE(3401)
NAD_83

POINT NUMBER: LC098

LATITUDE: 41:30'25.16084" N LONGITUDE: 81:58'47.80110" W

EASTING(FT) 2110941.73 NORTHING(FT) 670908.09 ELEV(FT) 611.48 NAVD_88

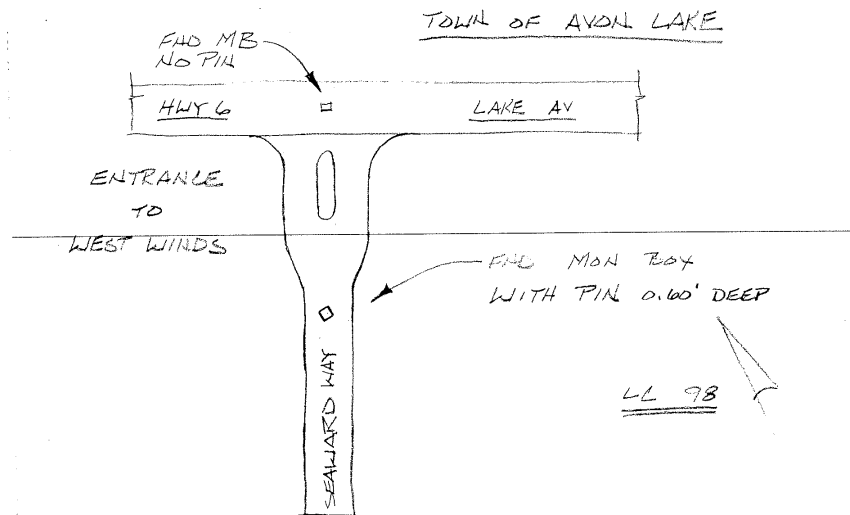
EASTING(M) 643416.326 NORTHING(M) 204493.194 ELEV(M) 186.380 NAVD_88

THETA: 0:20'29.941" COMBINATION FACTOR: 0.999939237

DESIGNATION: Existing monument box.

MONUMENTTYPE: Station mark is a metal rod located in a monument box.

PRINTED February 26, 1996



2-33

1995
LORAIN COUNTY OHIO
OHIO NORTH ZONE(3401)
NAD_83

POINT NUMBER: LC099

LATITUDE: 41:12'02.64134" N LONGITUDE: 81:56'09.23216" W

EASTING(FT) 2123727.63 NORTHING(FT) 559399.83 ELEV(FT) 913.12 NAVD_88

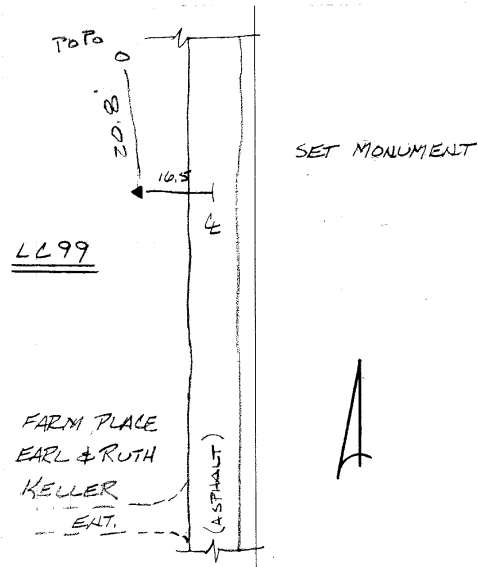
EASTING(M) 647313.476 NORTHING(M) 170505.410 ELEV(M) 278.318 NAVD_88

THETA: 0:22'14.113" COMBINATION FACTOR: 0.999898153

DESIGNATION: LC-99 1995 LORAIN CO GPS CONTROL POINT

MONUMENT TYPE: 5/8" dia aluminum rod monument with a 2 1/2" dia stamped aluminum survey cap encased in a PVC pipe with an aluminum access cover. Approx 6" below the surface of the ground.

PRINTED February 26, 1996



1995
LORAIN COUNTY OHIO
OHIO NORTH ZONE(3401)
NAD_83

POINT NUMBER: LC100

LATITUDE: 41:21'03.56406" N LONGITUDE: 81:56'32.60159" W

EASTING(FT) 2121591.33 NORTHING(FT) 614132.69 ELEV(FT) 791.56 NAVD_88

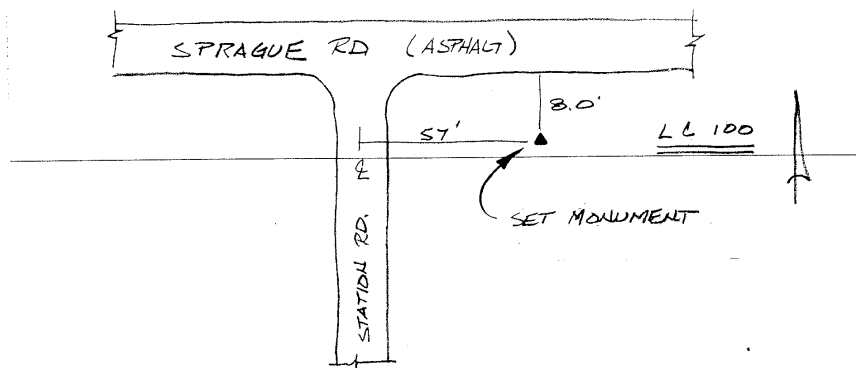
EASTING(M) 646662.331 NORTHING(M) 187188.019 ELEV(M) 241.269 NAVD_88

THETA: 0:21'58.761" COMBINATION FACTOR: 0.999913473

DESIGNATION: LC-100 1995 LORAIN CO GPS CONTROL POINT

MONUMENT TYPE: 5/8" dia aluminum rod monument with a 2 1/2" dia stamped aluminum survey cap encased in a PVC pipe with an aluminum access cover. Approx 6" below the surface of the ground.

PRINTED February 26, 1996



2-35

1995
LORAIN COUNTY OHIO
OHIO NORTH ZONE(3401)
NAD_83

POINT NUMBER: LC101

LATITUDE: 41:25'48.78713" N LONGITUDE: 81:56'04.84092" W

EASTING(FT) 2123521.31 NORTHING(FT) 643013.28 ELEV(FT) 731.33 NAVD_88

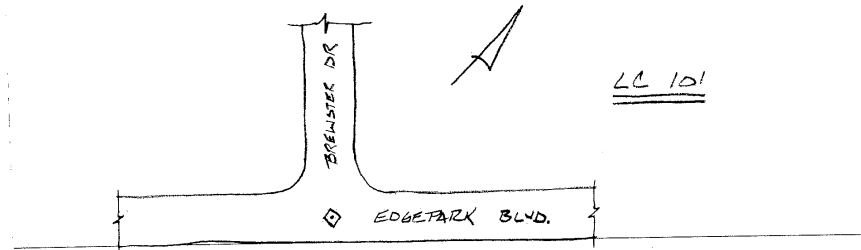
EASTING(M) 647250.590 NORTHING(M) 195990.841 ELEV(M) 222.910 NAVD_88

THETA: 0:22'16.998" COMBINATION FACTOR: 0.999924137

DESIGNATION: Existing monument box.

MONUMENT TYPE: Station mark is a metal rod located in a monument box.

PRINTED February 26, 1996



TOWN OF
NORTH OLMS TED

FIND MON. BOX
WITH 5/8" REBAR
0.45' DEEP

1995
LORAIN COUNTY OHIO
OHIO NORTH ZONE(3401)
NAD_83

POINT NUMBER: LC102

LATITUDE: 41:29'23.61810" N LONGITUDE: 81:56'06.51999" W

EASTING(FT) 2123252.59 NORTHING(FT) 664755.58 ELEV(FT) 615.66 NAVD_88

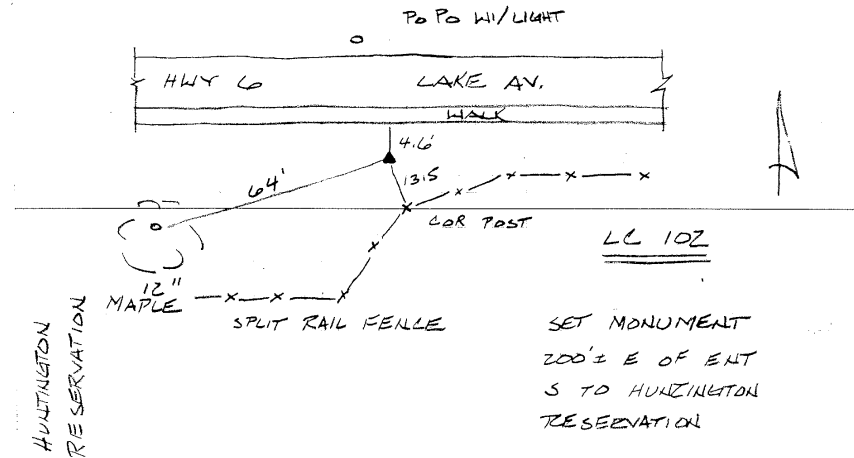
EASTING(M) 647168.684 NORTHING(M) 202617.905 ELEV(M) 187.655 NAVD_88

THETA: 0:22'15.895" COMBINATION FACTOR: 0.999936795

DESIGNATION: LC-102 1995 LORAIN CO GPS CONTROL POINT

MONUMENT TYPE: 5/8" dia aluminum rod monument with a 2 1/2" dia stamped aluminum survey cap encased in a PVC pipe with an aluminum access cover. Approx 6" below the surface of the ground.

PRINTED February 26, 1996



2-37

1995
LORAIN COUNTY OHIO
OHIO NORTH ZONE(3401)
NAD_83

POINT NUMBER: LC103

LATITUDE: 41:21'02.86882" N LONGITUDE: 81:52'59.16884" W

EASTING(FT) 2137868.71 NORTHING(FT) 614171.93 ELEV(FT) 788.44 NAVD_88

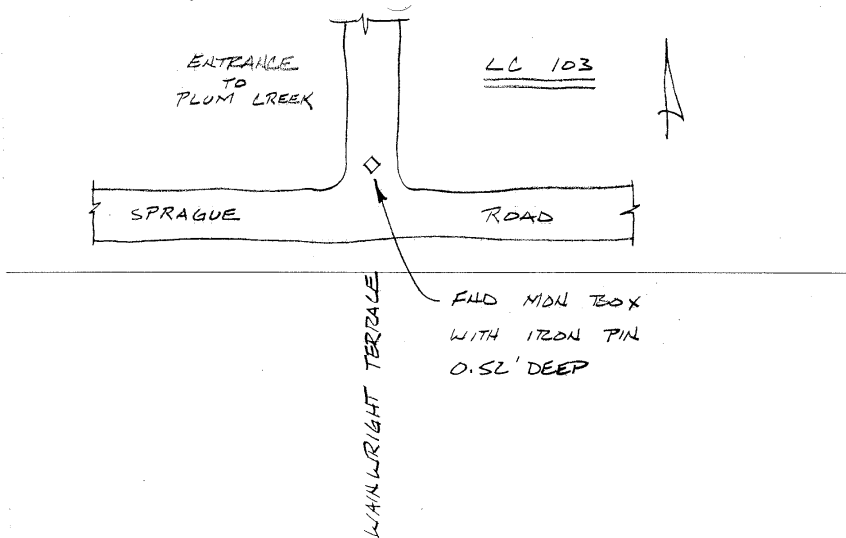
EASTING(M) 651623.686 NORTHING(M) 187199.979 ELEV(M) 240.317 NAVD_88

THETA: 0:24'18.975" COMBINATION FACTOR: 0.999913606

DESIGNATION: Existing monument box.

MONUMENT TYPE: Station mark is a metal rod located in a monument box.

PRINTED February 26, 1996



2-38

1995
LORAIN COUNTY OHIO
OHIO NORTH ZONE(3401)
NAD_83

POINT NUMBER: LC104

LATITUDE: 41:18'45.43177" N LONGITUDE: 81:53'03.35204" W

EASTING(FT) 2137647.89 NORTHING(FT) 600260.17 ELEV(FT) 848.93 NAVD_88

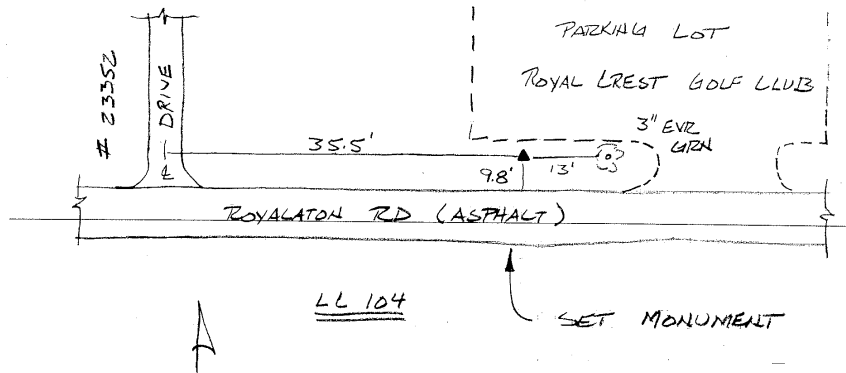
EASTING(M) 651556.380 NORTHING(M) 182959.665 ELEV(M) 258.754 NAVD_88

THETA: 0:24'16.227" COMBINATION FACTOR: 0.999907648

DESIGNATION: LC-104 1995 LORAIN CO GPS CONTROL POINT

MONUMENT TYPE: 5/8" dia aluminum rod monument with a 2 1/2" dia stamped aluminum survey cap encased in a PVC pipe with an aluminum access cover. Approx 6" below the surface of the ground.

PRINTED February 26, 1996



2-39

1995
LORAIN COUNTY OHIO
OHIO NORTH ZONE(3401)
NAD_83

POINT NUMBER: LC105

LATITUDE: 41:16'27.89030" N LONGITUDE: 81:50'12.22121" W

EASTING(FT) 2150812.16 NORTHING(FT) 586436.03 ELEV(FT) 1191.42 NAVD_88

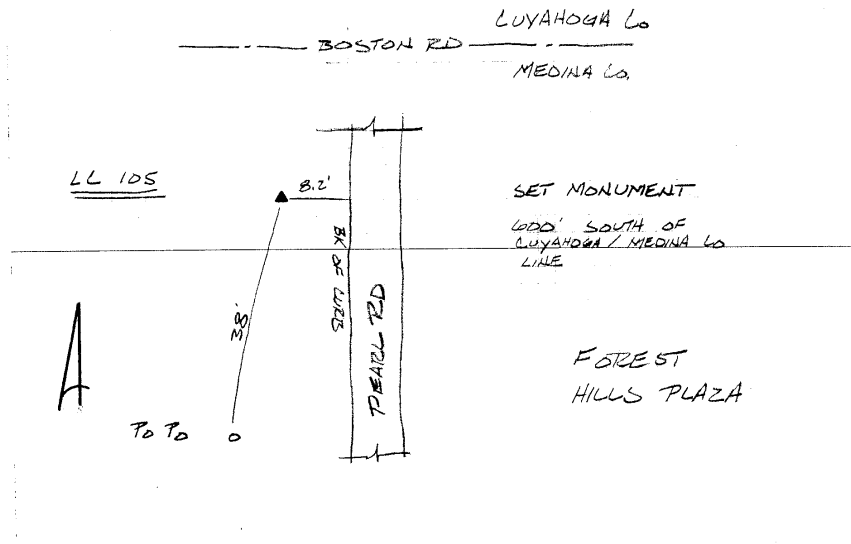
EASTING(M) 655568.856 NORTHING(M) 178746.060 ELEV(M) 363.146 NAVD_88

THETA: 0:26'08.652" COMBINATION FACTOR: 0.999888644

DESIGNATION: LC-105 1995 LORAIN CO GPS CONTROL POINT

MONUMENT TYPE: 5/8" dia aluminum rod monument with a 2 1/2" dia stamped aluminum survey cap encased in a PVC pipe with an aluminum access cover. Approx 6" below the surface of the ground.

PRINTED February 26, 1996



2-40

1995
LORAIN COUNTY OHIO
OHIO NORTH ZONE(3401)
NAD_83

POINT NUMBER: LC106

LATITUDE: 41:21'21.64596" N LONGITUDE: 81:50'40.50135" W

EASTING(FT) 2148429.52 NORTHING(FT) 616149.44 ELEV(FT) 802.46 NAVD_88

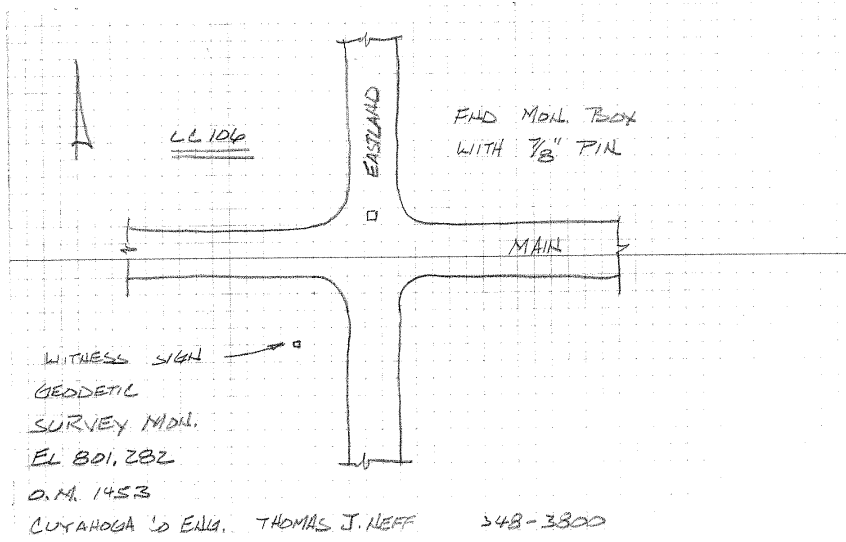
EASTING(M) 654842.629 NORTHING(M) 187802.724 ELEV(M) 244.589 NAVD_88

THETA: 0:25'50.073" COMBINATION FACTOR: 0.999913389

DESIGNATION: Existing monument box.

MONUMENTTYPE: Station mark is a metal rod located in a monument box.

PRINTED February 26, 1996



2-41

1995
LORAIN COUNTY OHIO
OHIO NORTH ZONE(3401)
NAD_83

POINT NUMBER: LC107

LATITUDE: 41:15'24.24897" N LONGITUDE: 82:20'33.45722" W

EASTING(FT) 2011768.80 NORTHING(FT) 579340.86 ELEV(FT) 873.06 NAVD_88

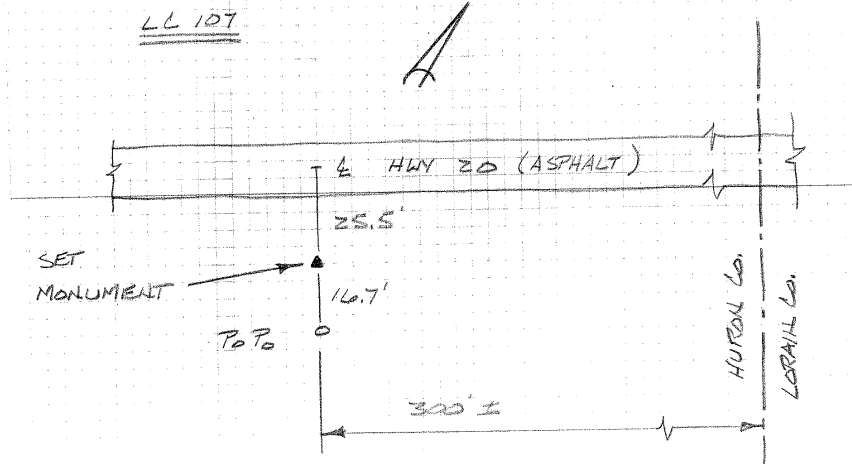
EASTING(M) 613188.357 NORTHING(M) 176583.446 ELEV(M) 266.110 NAVD_88

THETA: 0:06'12.190" COMBINATION FACTOR: 0.999902808

DESIGNATION: LC-107 1995 LORAIN CO GPS CONTROL POINT

MONUMENT TYPE: 5/8" dia aluminum rod monument with a 2 1/2" dia stamped aluminum survey cap encased in a PVC pipe with an aluminum access cover. Approx 6" below the surface of the ground.

PRINTED February 26, 1996



2-42

