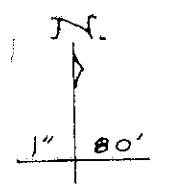
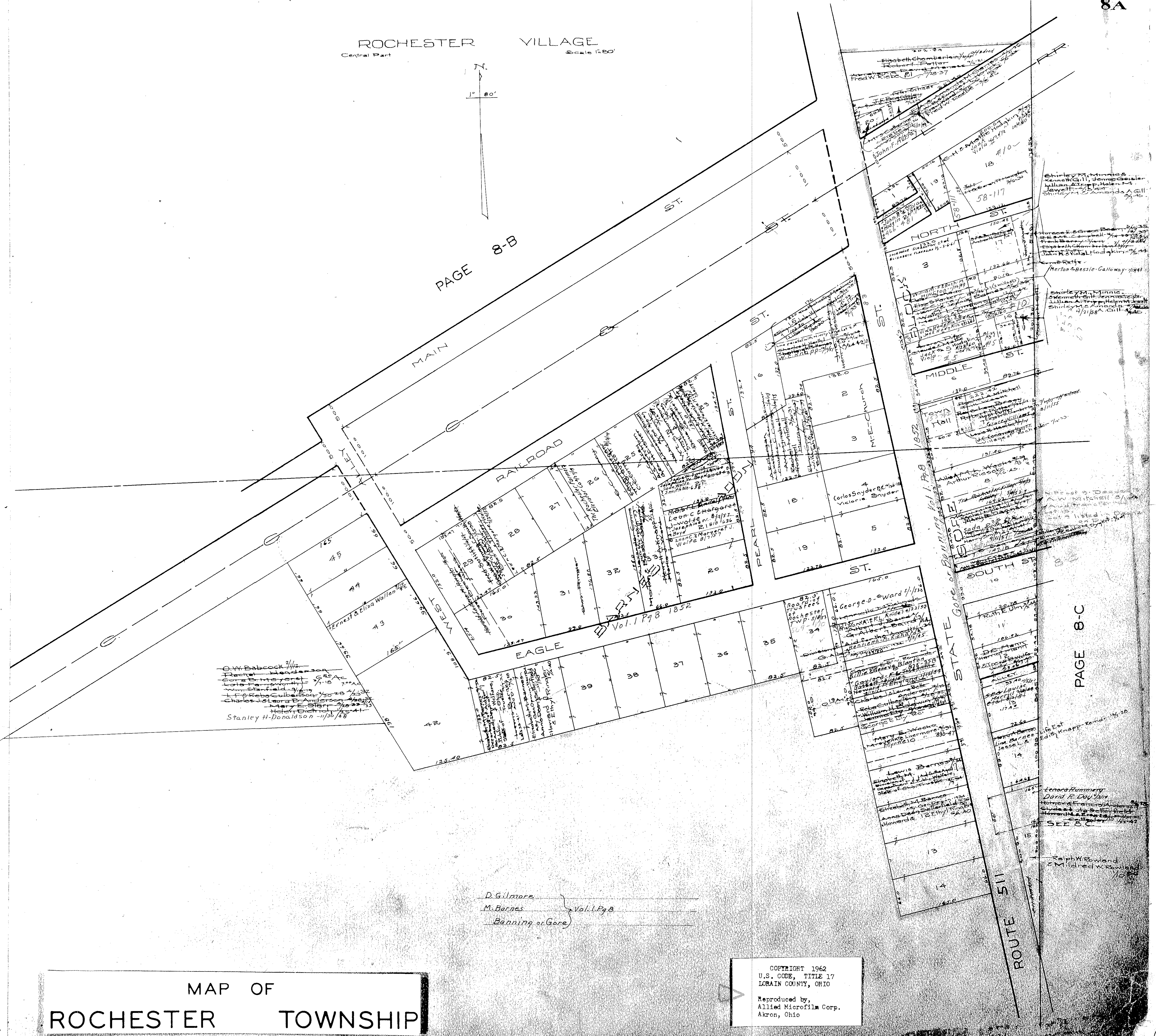


ROCHESTER VILLAGE
Central Part Scale 1"=80'



PAGE 8-B



PAGE 8-C

MAP OF
ROCHESTER TOWNSHIP

COPYRIGHT 1962
U.S. CODE, TITLE 17
LORAIN COUNTY, OHIO
Reproduced by
Allied Microfilm Corp.
Akron, Ohio