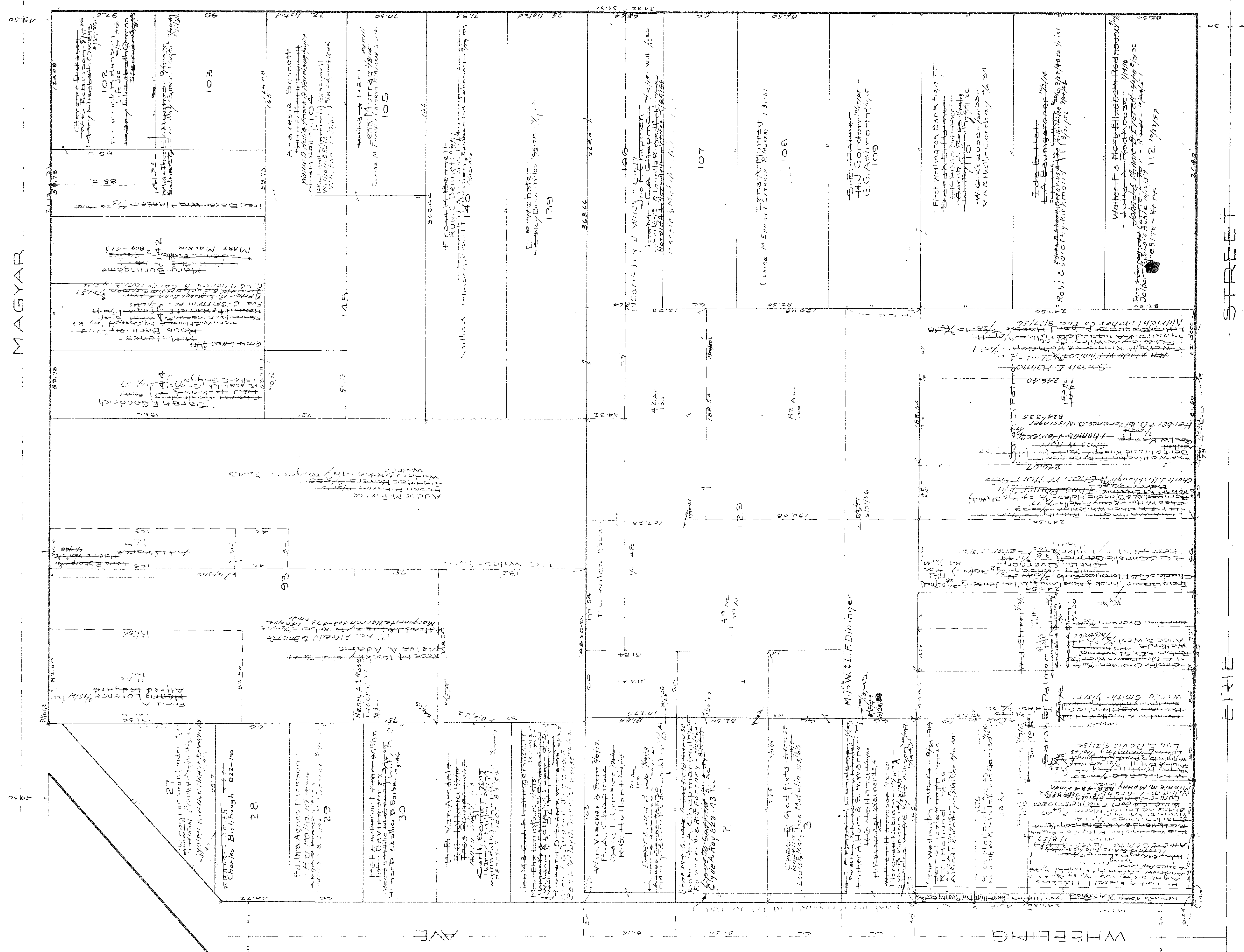


CONV. BY
 U.S. DEPT. OF AGRICULTURE
 LAND OFFICE, WASH. D.C.
 REPRODUCED BY
 ALLIED MICROFILMS CORP.
 ANN ARBOR, MICH.

WELLINGTON VILLAGE



- HUCKINS ADDN Vol. 3-Pg. 24
- CHAPMANS ADD Vol. 3-Pg. 27
- BARNARDS ADD Vol. 1-Pg. 33
- LAMBERTS SUBN. Vol. 1-Pg. 31
- HAMLIN & TURLEY ADDN Vol. 1-Pg. 25
- ORIGINAL VILLAGE PLAT Vol. 1-Pg. 8

(When L. White in to L. Shop (Holland))