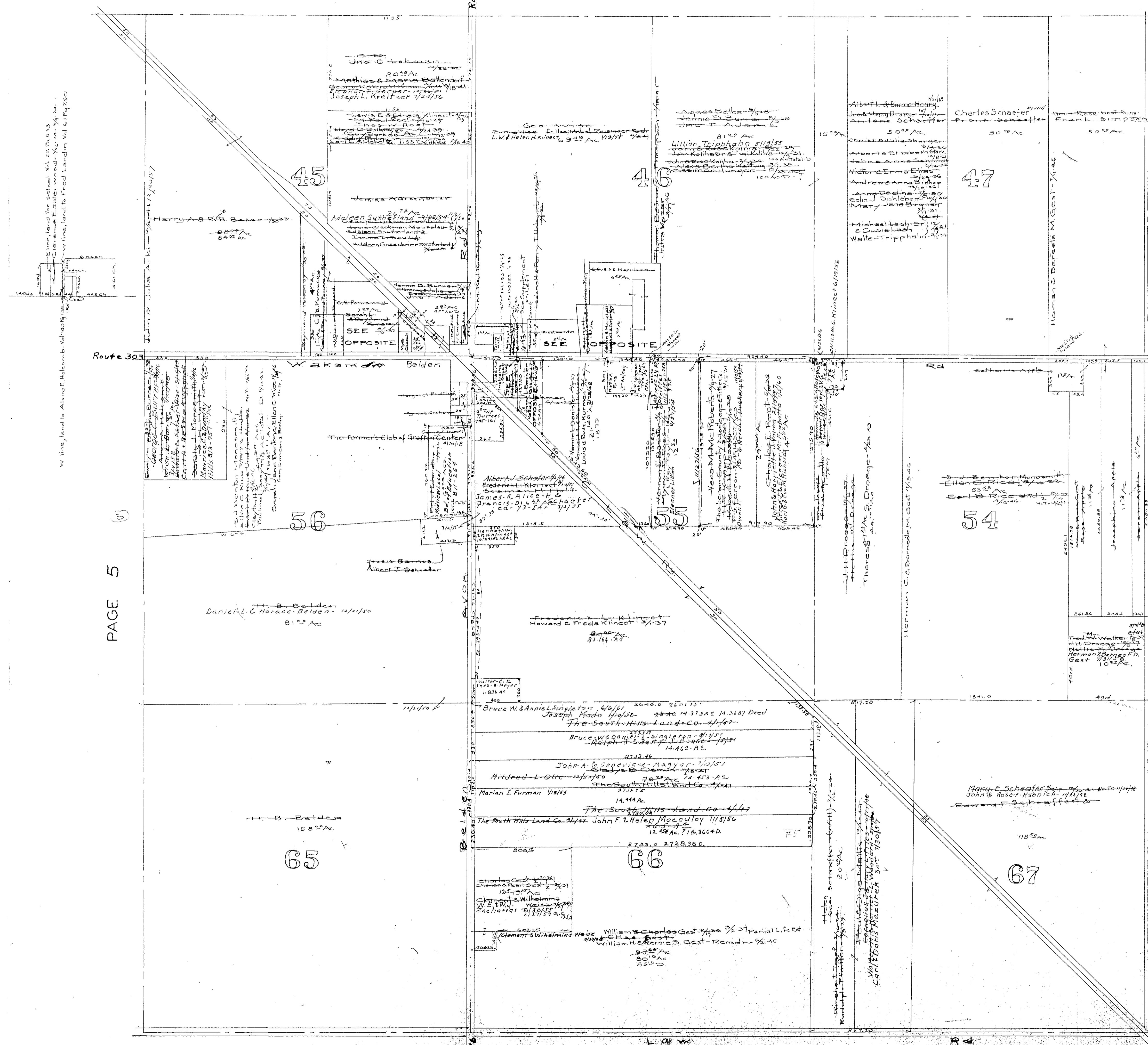


GRAFTON TWP
CENTRAL PART
Scale 1 in. = 400 ft.



MAP OF
GRAFTON TOWNSHIP

COPYRIGHT 1962
U.S. CODE, TITLE 17
LORAIN COUNTY, OHIO
Reproduced by,
Allied Microfilm Corp.
Akron, Ohio

W line, land to Alvin E. Holcomb, Vol. 10019, p. 102
E line, land for school, Vol. 2515, p. 533
Clarence Estabrook, 1/2, 20.24, 24.24
W line, land to Fred Landin, Vol. 619, p. 260