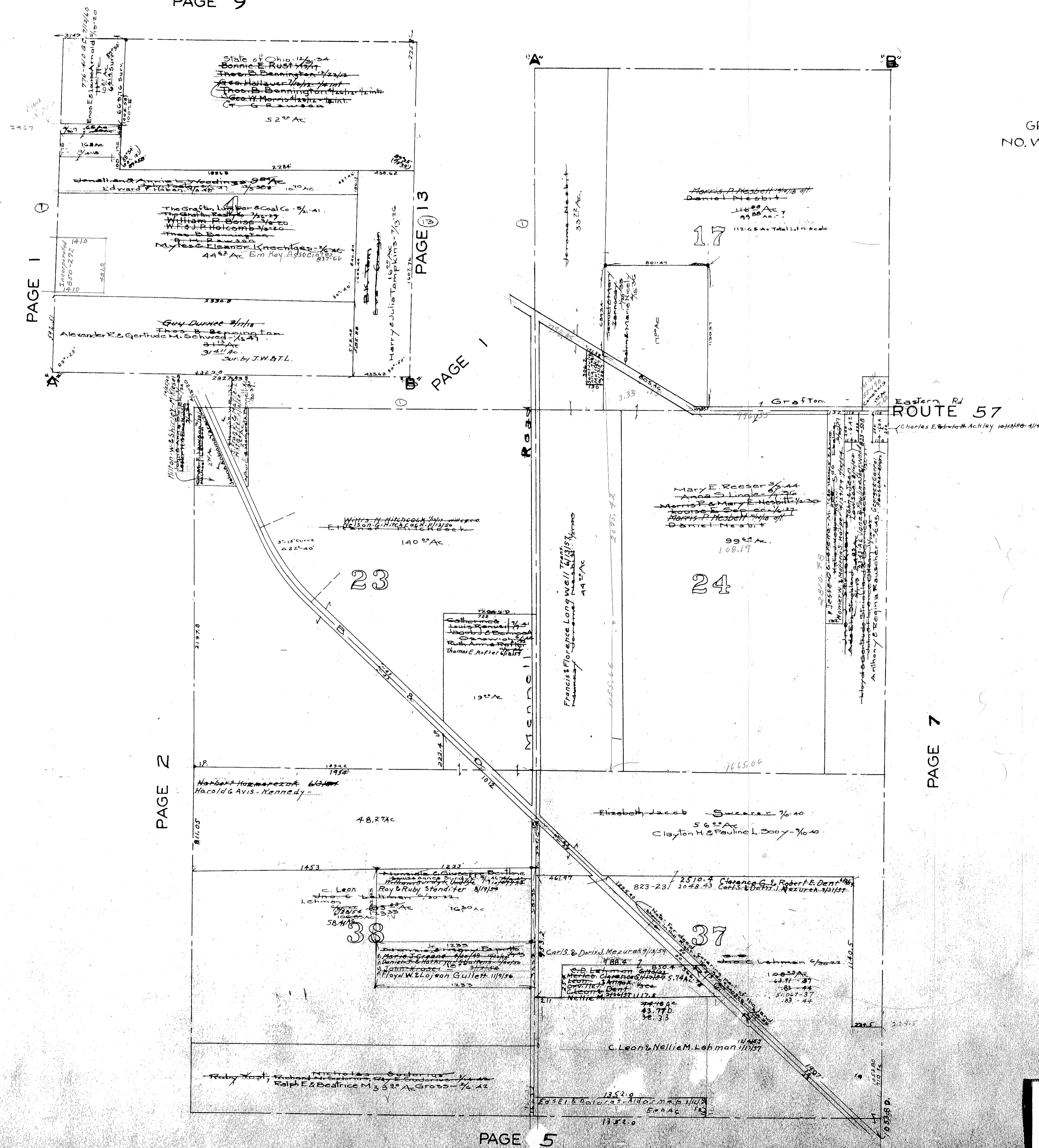


GRAFTON TWP.  
NO. WEST MIDDLE PART  
Scale 1 in = 400 ft.



MAP OF  
GRAFTON TOWNSHIP

COPYRIGHT 1962  
U.S. CODE, TITLE 17  
LORAIN COUNTY, OHIO  
Reproduced by,  
Allied Microfilm Corp.  
Akron, Ohio