

WHITNEY RD.

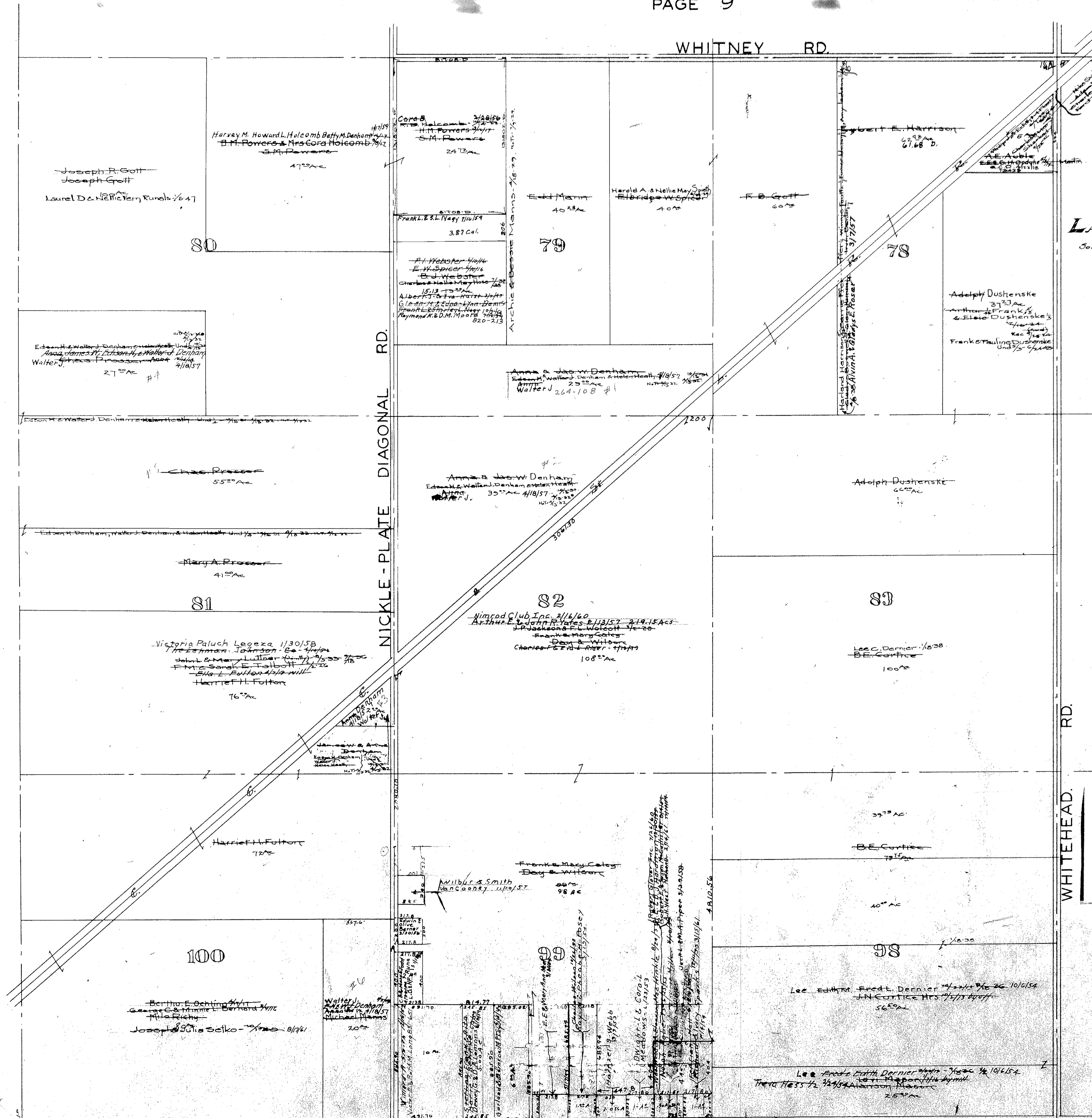
L A G R A N G E T n p.
South West Corner
Scale 1" = 400'

M A P O F
L A G R A N G E T O W N S H I P

P A G E 1 5

COPYRIGHT 1962
U.S. CODE, TITLE 17
LORAIN COUNTY, OHIO
Reproduced by,
Allied Microfilm Corp.
Akron, Ohio

P I T T S F I E L D T W P. P A G E 1 6



W E B S T E R R D.
P E N F I E L D T W P.

P A G E 1 0

Pittsfield
Penfield
Webster Twp.

W H I T E H E A D R D.