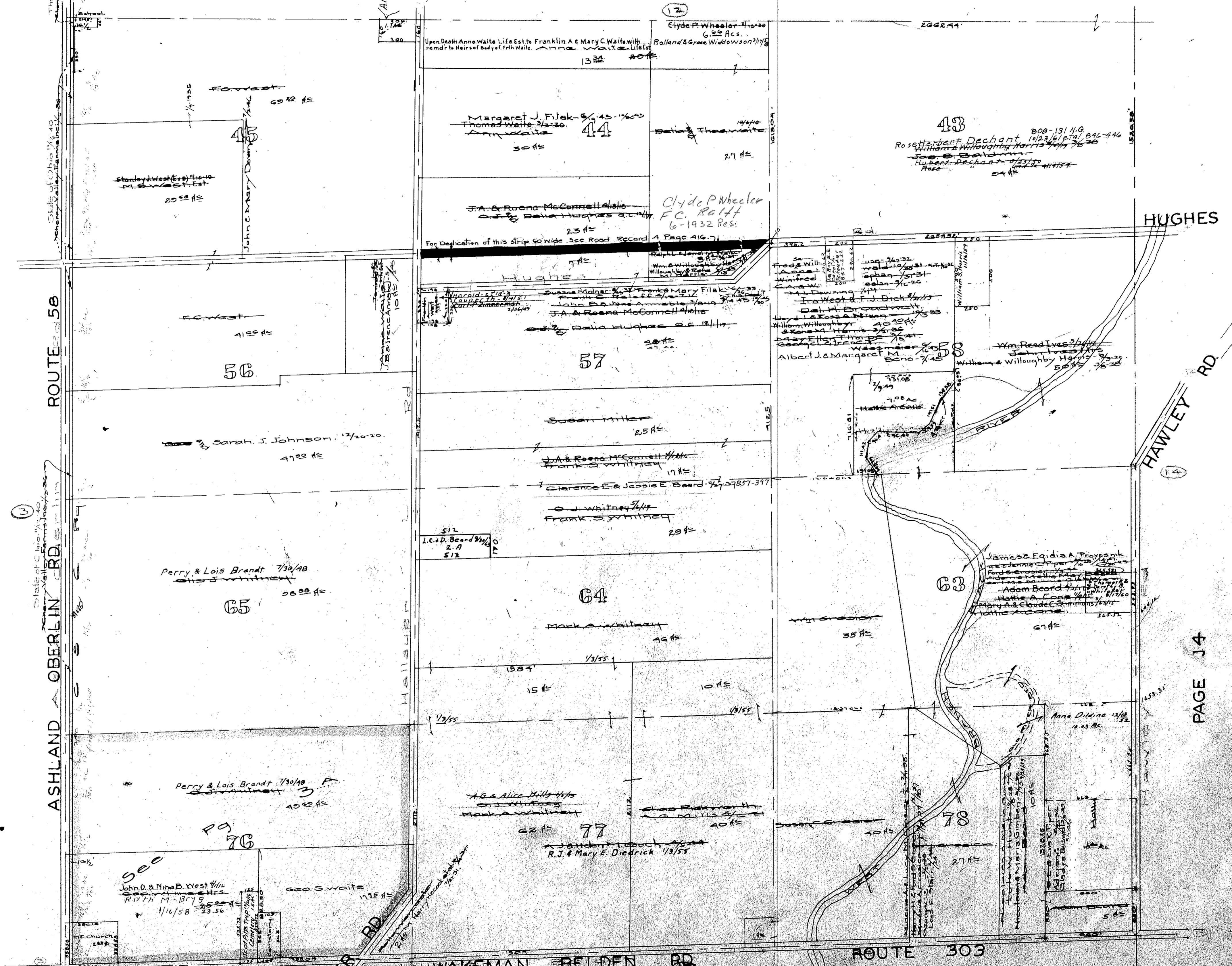


PITTSFIELD TWP.
Middle Part. Scale 1" = 400'

PAGE 12



PAGE 3

PAGE 14

PAGE 10

MAP OF
PITTSFIELD TOWNSHIP

COPYRIGHT 1962
U.S. CODE, TITLE 17
LORAIN COUNTY, OHIO
Reproduced by
Allied Microfilm Corp.
Akron, Ohio