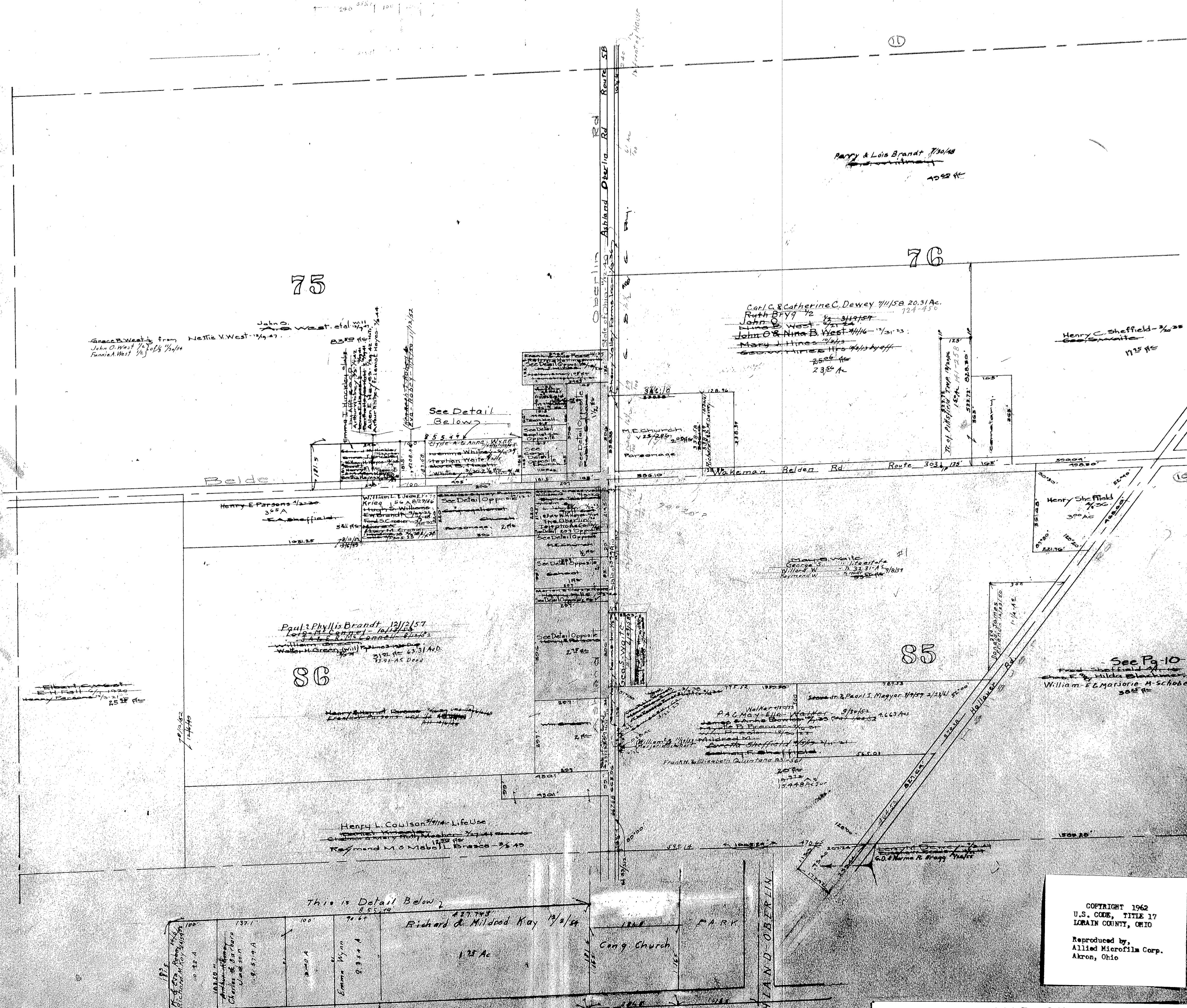


PITTSFIELD TWP
Middle Part. Scale - 1:200'



See Detail Below

75

76

86

85

COPYRIGHT 1962
U.S. CODE, TITLE 17
LORAIN COUNTY, OHIO

Reproduced by,
Allied Microfilm Corp.
Akron, Ohio

MAP OF
PITTSFIELD TOWNSHIP

This is Detail Below
Richard & Mildred Kay 11/2/54
1.25 Ac

WAKEMAN BELDEN RD - 60 (SR 303)
Scale 1:1000'