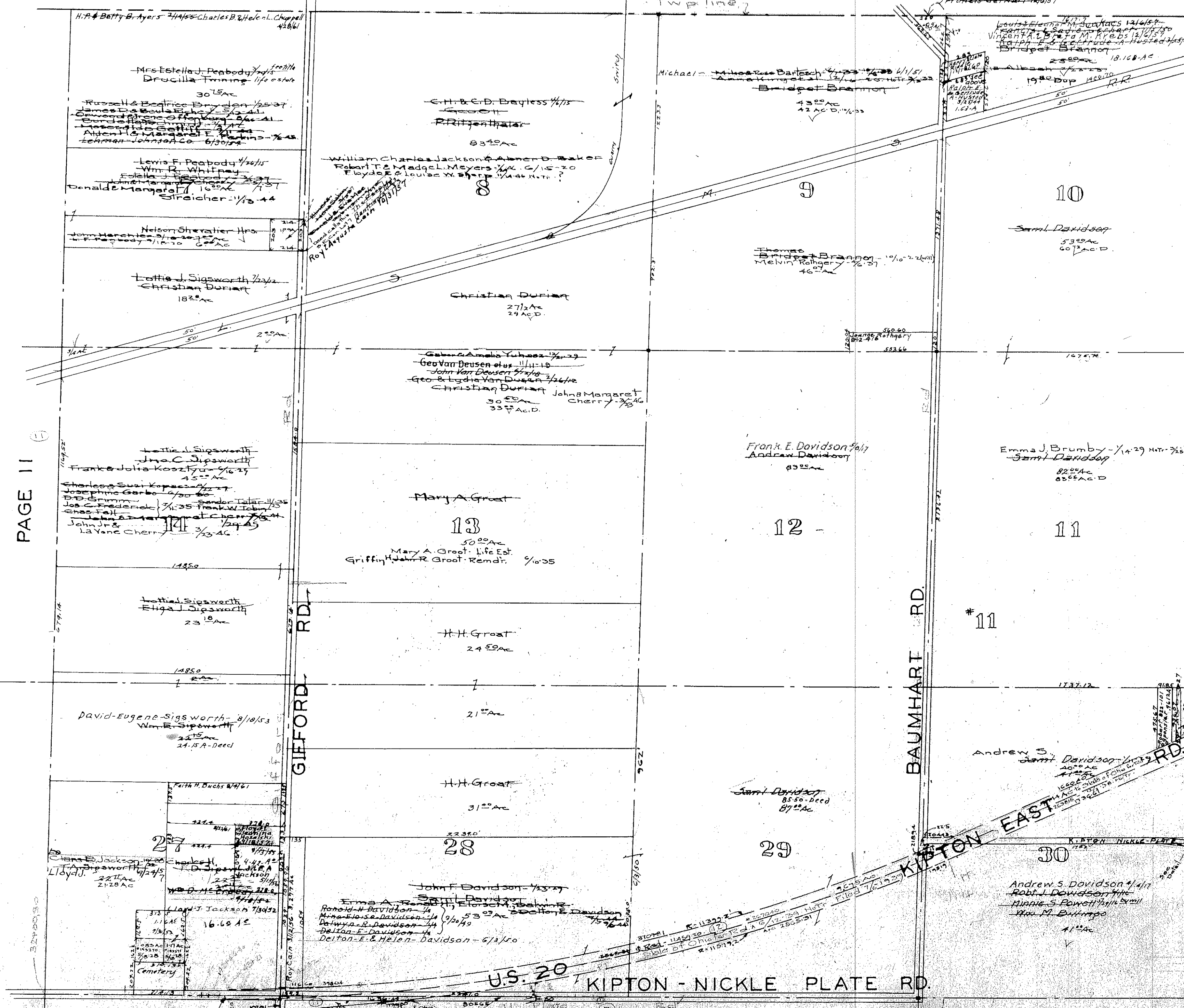


HENRIETTA TWP PAGES 8+9

RUSSIA TWP PAGE 13

Camden Twp.
North East Corner
Scale 1"=400'



PAGE 11

PITTSFIELD TWP PAGE 12

PAGE 7

DETAIL Scale 1"=200'

Note for dedication of parts in & vac of parts in blue. See Road Record 4 Pg. 432

MAP OF CAMDEN TOWNSHIP

COPYRIGHT 1962
U.S. CODE, TITLE 17
LORAIN COUNTY, OHIO
Reproduced by,
Allied Microfilm Corp.
Akron, Ohio