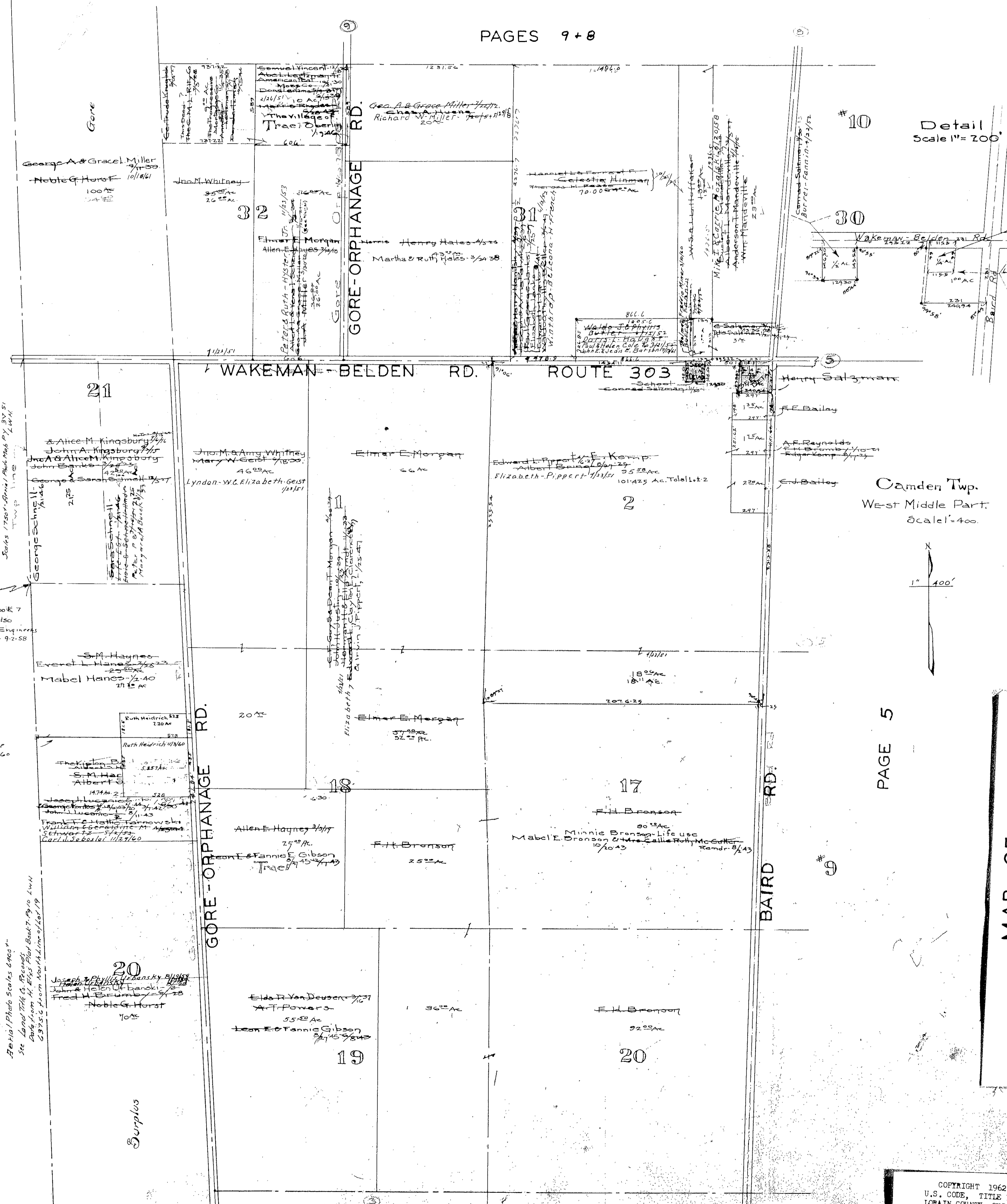


HURON COUNTY
WAKEMAN TWP.



CORRECTED L.W.H.
 Lot line established by
 Rd Rec 2 Pg 385 along
 with Memon Elys Plat Book 7
 Ept. 1914 by C. H. Co. Office also
 confirmed by Lorain County Engineers
 Aerial Photo Map PLY 34-51-9-2-58
 L.W.H.

Formerly shown as the North Lot Line
 of Lot 20 Gore Strip, Corrected 10-28-60
 L.W.H.

Aerial Photo Scale 1:4000
 See Land Title Co. Record
 Plat from M. Elys Aerial Book 7, P. 10, L.W.H.
 C.S. & Son, No. 141, Linn. Co. 1897

Detail
 Scale 1" = 200'

Camden Twp.
 West Middle Part.
 Scale 1" = 400'

PAGE 5

PAGE 3

COPYRIGHT 1962
 U.S. CODE, TITLE 17
 LORAIN COUNTY, OHIO
 Reproduced by,
 Allied Microfilm Corp.
 Akron, Ohio

MAP OF
 CAMDEN TOWNSHIP