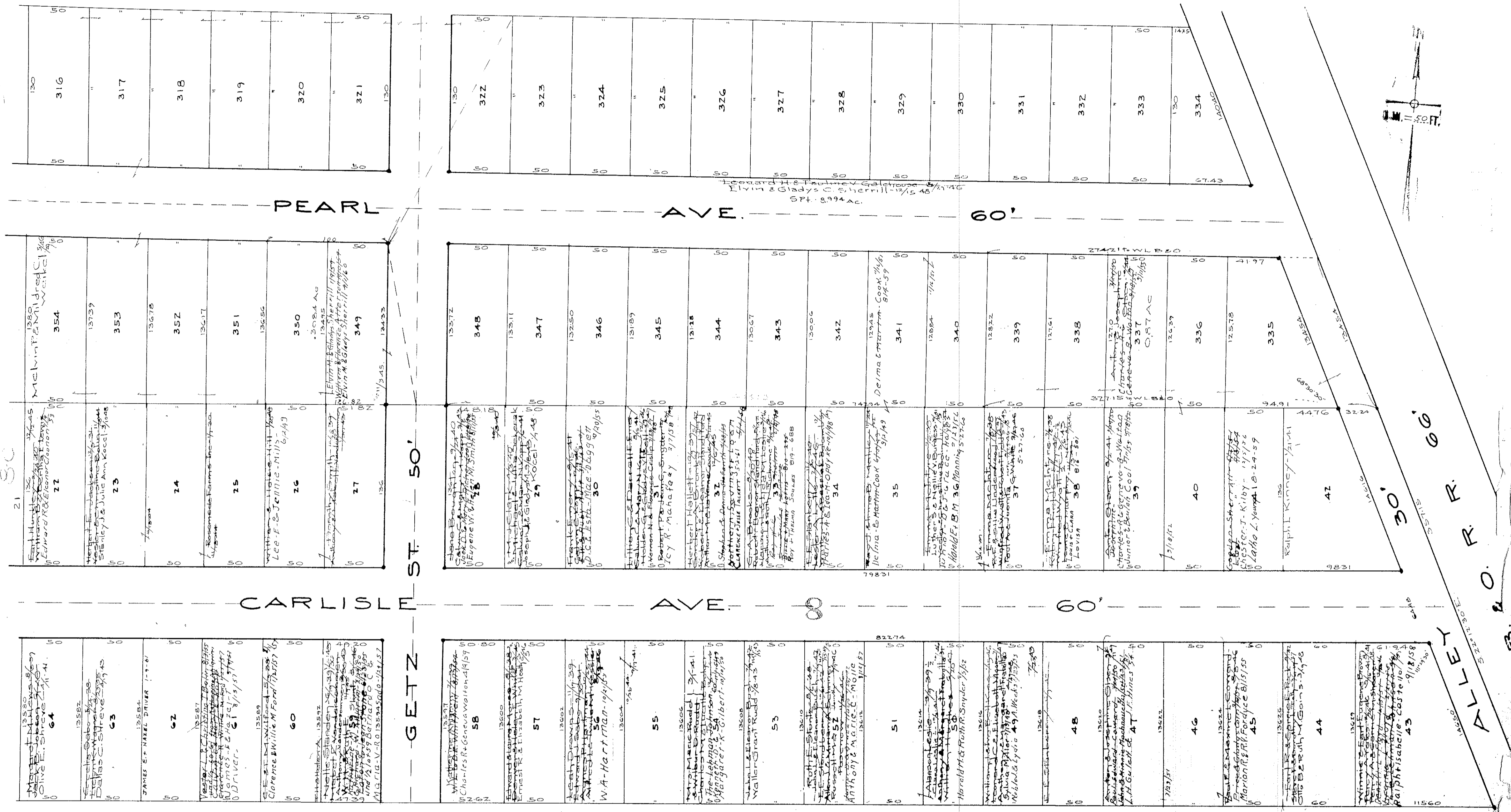


Vacated 2/29-32 File # 224046
Rosemeade Farms Vol. 13 Pg. 20
Lots in blank: Rosemeade Farms Inc.
Arlene B. ...
Leonard H. & Pauline Galchouse - 1/2 ac.



1-12 0.0
13-16 8.0
17-20 16.0
21-24 24.0
25-28 32.0
29-32 40.0
33-36 48.0
37-40 56.0
41-44 64.0
45-48 72.0
49-52 80.0
53-56 88.0
57-60 96.0
61-64 104.0
65-68 112.0
69-72 120.0
73-76 128.0
77-80 136.0
81-84 144.0
85-88 152.0
89-92 160.0
93-96 168.0
97-100 176.0
101-104 184.0
105-108 192.0
109-112 200.0
113-116 208.0
117-120 216.0
121-124 224.0
125-128 232.0
129-132 240.0
133-136 248.0
137-140 256.0
141-144 264.0
145-148 272.0
149-152 280.0
153-156 288.0
157-160 296.0
161-164 304.0
165-168 312.0
169-172 320.0
173-176 328.0
177-180 336.0
181-184 344.0
185-188 352.0
189-192 360.0
193-196 368.0
197-200 376.0
201-204 384.0
205-208 392.0
209-212 400.0
213-216 408.0
217-220 416.0
221-224 424.0
225-228 432.0
229-232 440.0
233-236 448.0
237-240 456.0
241-244 464.0
245-248 472.0
249-252 480.0
253-256 488.0
257-260 496.0
261-264 504.0
265-268 512.0
269-272 520.0
273-276 528.0
277-280 536.0
281-284 544.0
285-288 552.0
289-292 560.0
293-296 568.0
297-300 576.0
301-304 584.0
305-308 592.0
309-312 600.0
313-316 608.0
317-320 616.0
321-324 624.0
325-328 632.0
329-332 640.0
333-336 648.0
337-340 656.0
341-344 664.0
345-348 672.0
349-352 680.0
353-356 688.0
357-360 696.0
361-364 704.0
365-368 712.0
369-372 720.0
373-376 728.0
377-380 736.0
381-384 744.0
385-388 752.0
389-392 760.0
393-396 768.0
397-400 776.0
401-404 784.0
405-408 792.0
409-412 800.0
413-416 808.0
417-420 816.0
421-424 824.0
425-428 832.0
429-432 840.0
433-436 848.0
437-440 856.0
441-444 864.0
445-448 872.0
449-452 880.0
453-456 888.0
457-460 896.0
461-464 904.0
465-468 912.0
469-472 920.0
473-476 928.0
477-480 936.0
481-484 944.0
485-488 952.0
489-492 960.0
493-496 968.0
497-500 976.0
501-504 984.0
505-508 992.0
509-512 1000.0

MAP OF
CARLISLE TOWNSHIP

COPYRIGHT 1962
U.S. CODE, TITLE 17
LORAIN COUNTY, OHIO

Reproduced by,
Allied Microfilm Corp.
Akron, Ohio