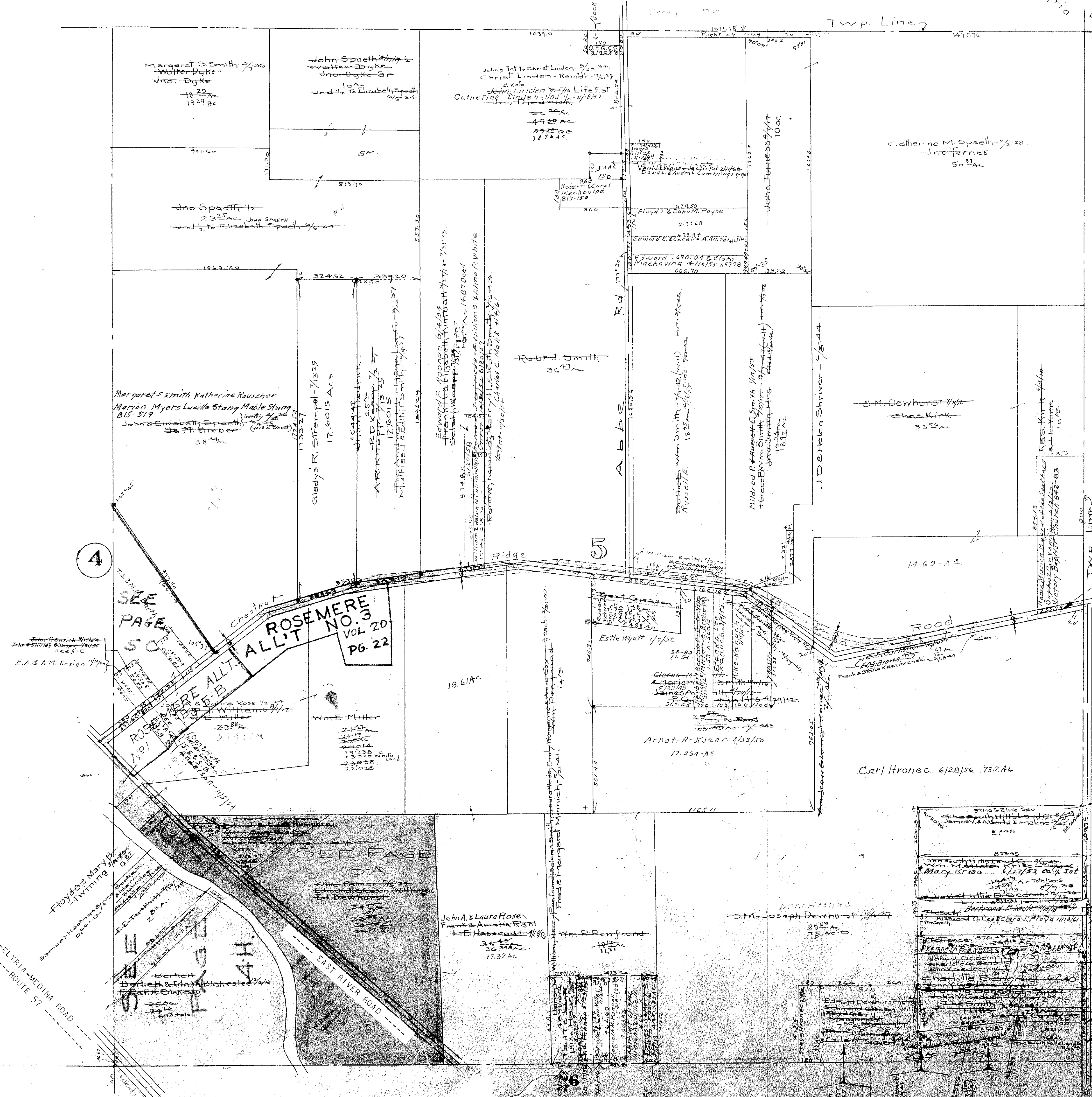


Elyria
Ridgeville
Eaton



CARLISLE TWP
Scale 1"=300' NE Corner



For alteration of Chestnut Ridge Rd
See Road Rec. A Pgs. 470-471
as shown in yellow tint.

EATON TWP. PAGES 7 & 8

MAP OF
CARLISLE TOWNSHIP

6

COPYRIGHT 1962
U.S. CODE, TITLE 17
LORAIN COUNTY, OHIO
Reproduced by,
Allied Microfilm Corp.
Akron, Ohio