

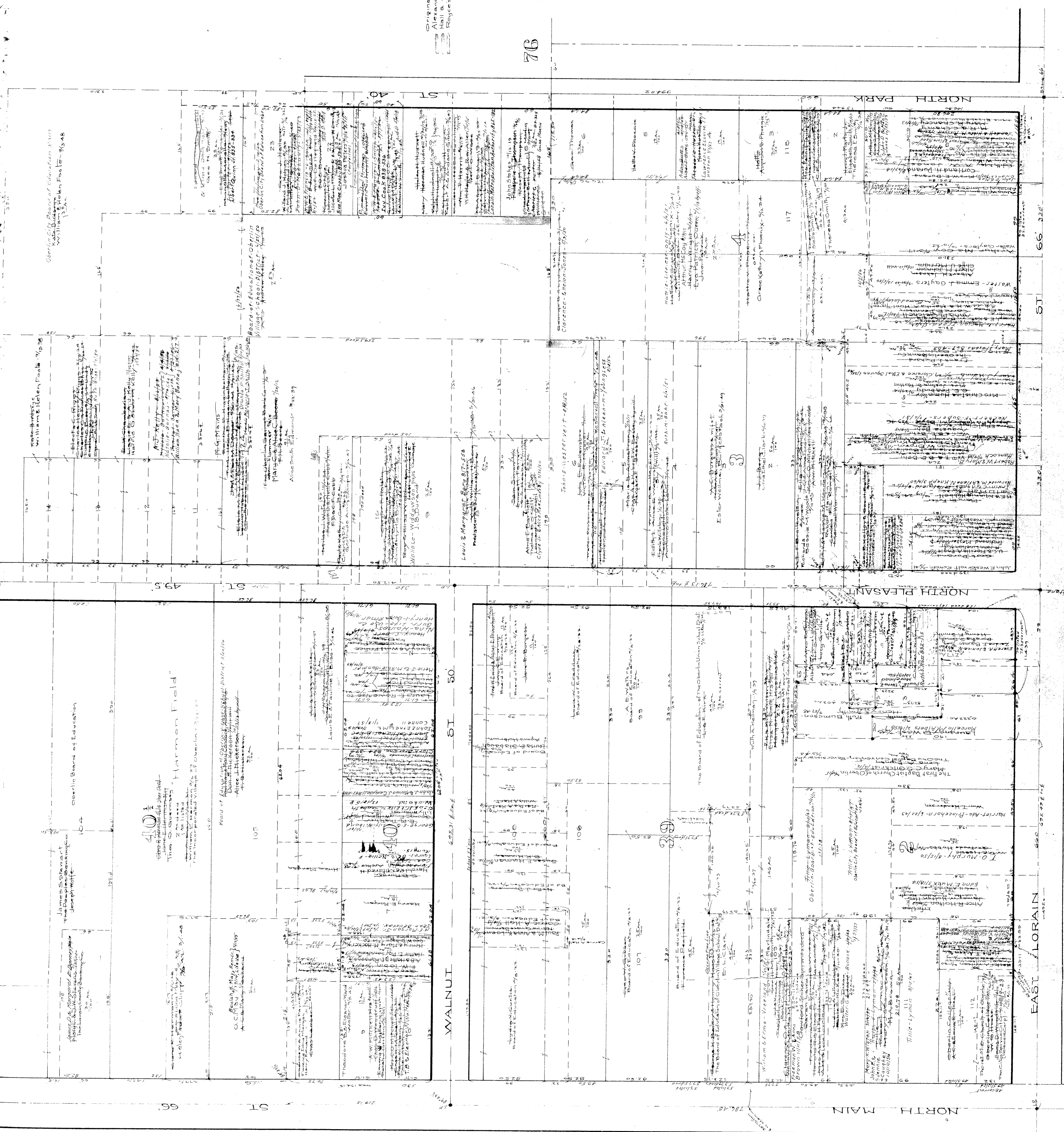
Original Village Plat (Vol. 1, Pg. 20, Vol. 5, Pg. 30, Alexander Subn. Vol. 3, Pg. 6, Hall & Cole Addn. Vol. 1, Pg. 38, Royce Subn. Vol. 2, Pg. 23)

N
Scale 50 ft

OBERLIN VILLAGE

COPYRIGHT 1942
LADWIN JOHN, CHD
Reproduced by
Ladwin John, Inc.
Albany, Ohio

76



EAST LORAIN

NORTH MAIN

NORTH PLEASANT

NORTH PARK

66-330'

51

330'

495

51

50

66

51

66

51

66